

Internal Photos of the Simrad AI50

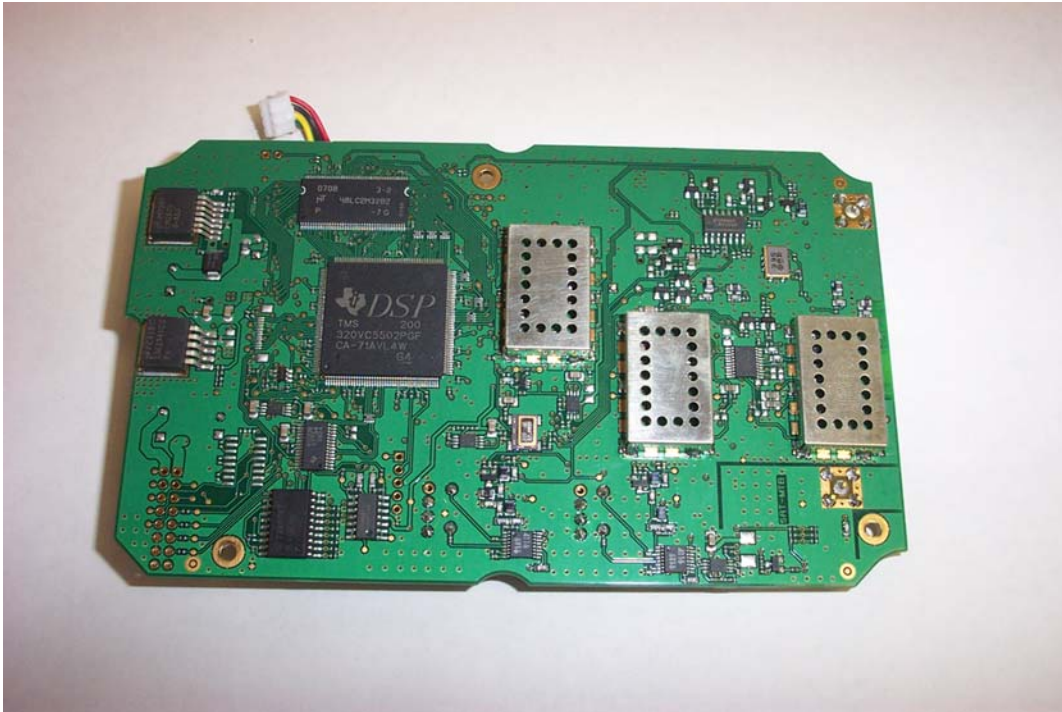


Figure 1: RF PCB DSP side; (this is the SRT PCB licensed to Navico)

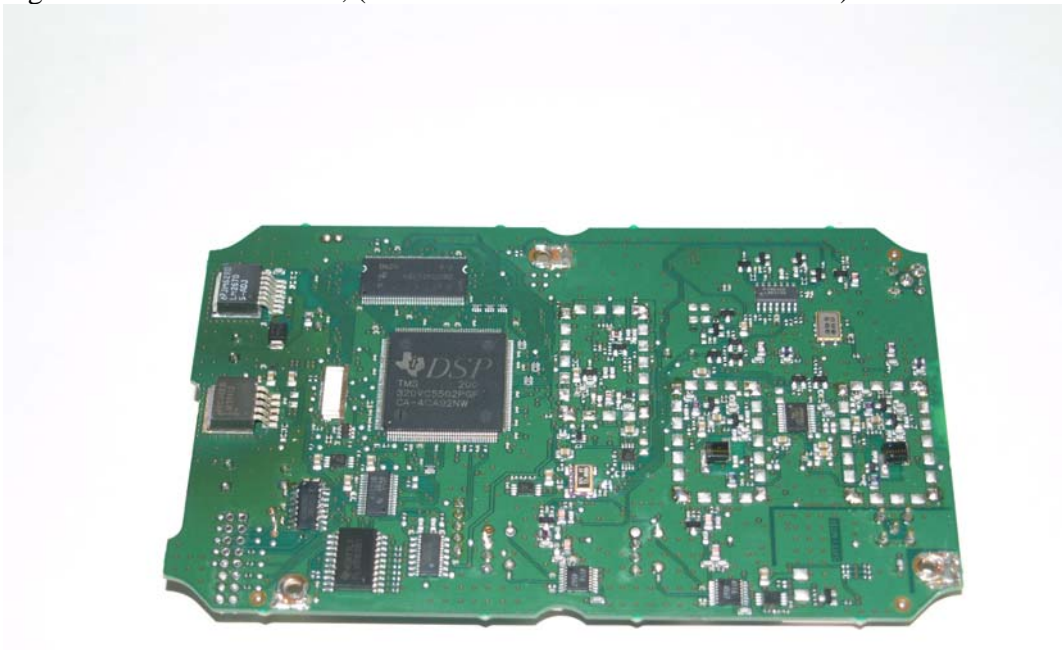


Figure 2: RF PCB DSP side with screens removed



Figure 3: RF PCB FPGA side with screens removed

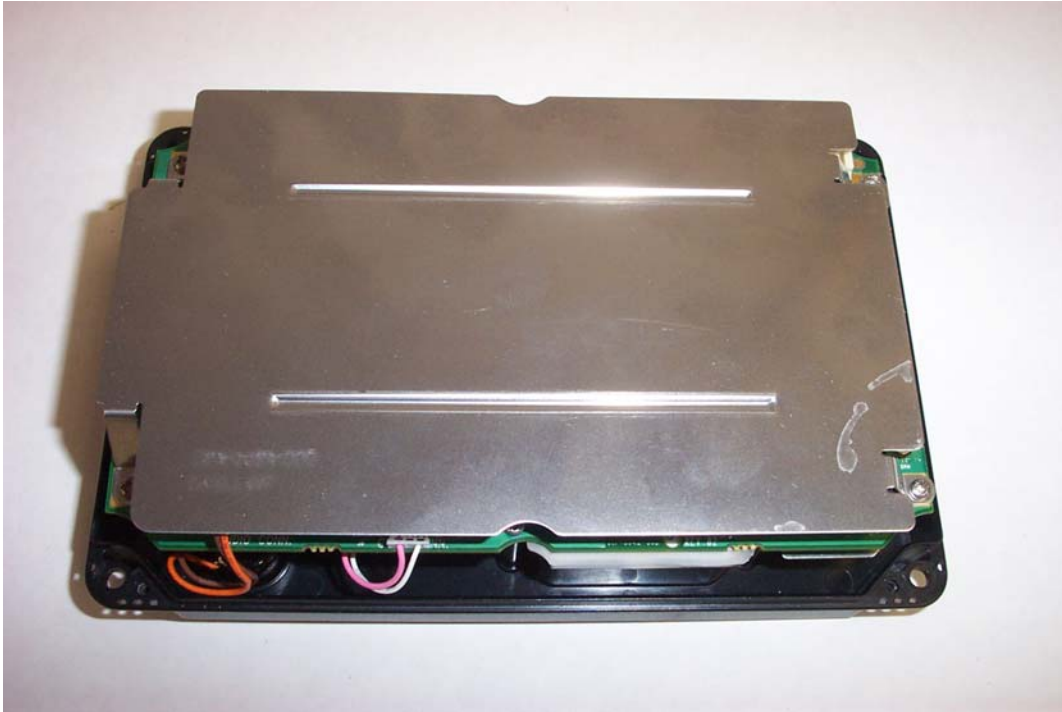


Figure 4: Control PCB in situ with screen removed

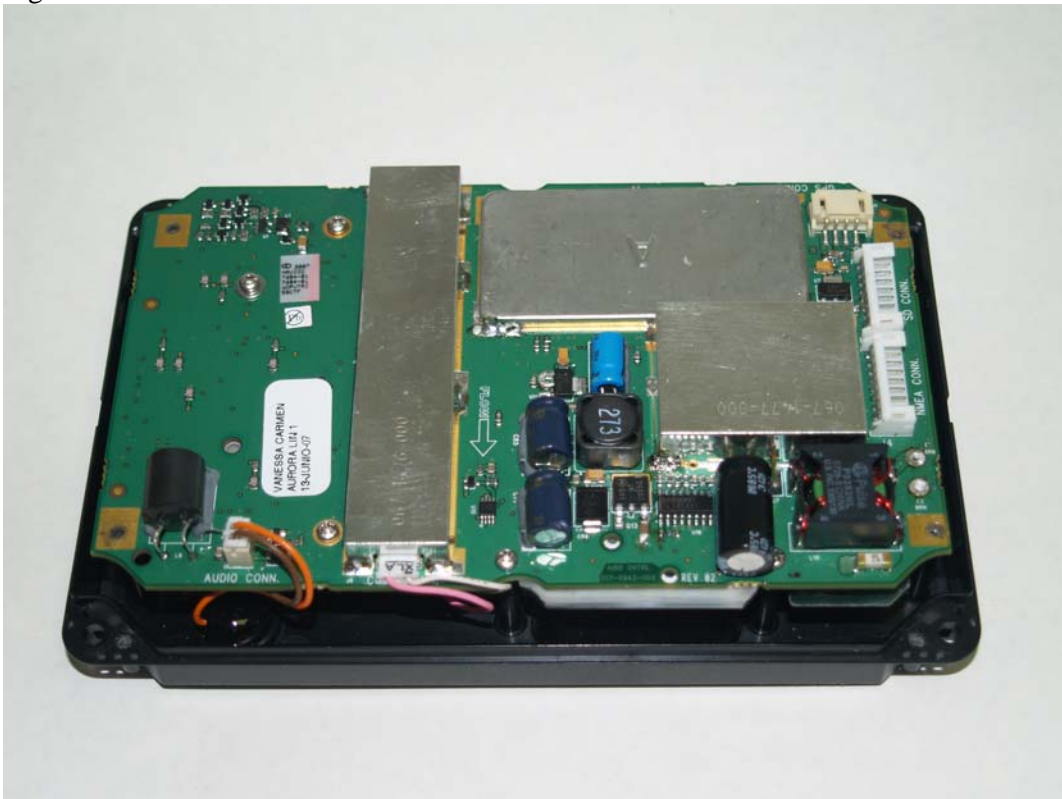


Figure 5: Control PCB in situ with overall screen removed

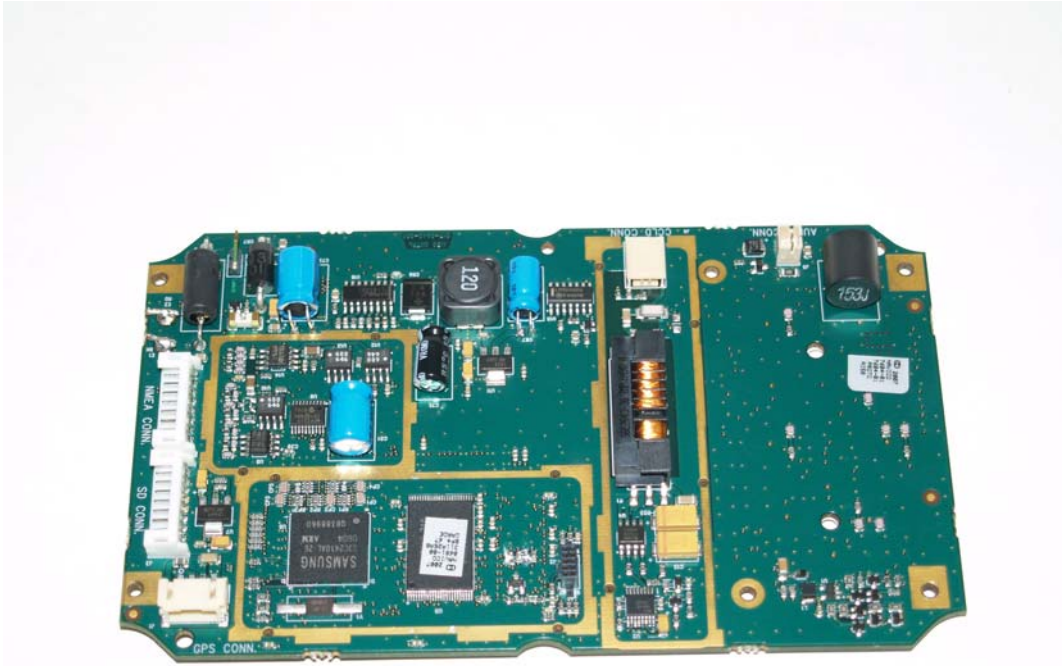


Figure 6: Control PCB with local screens removed

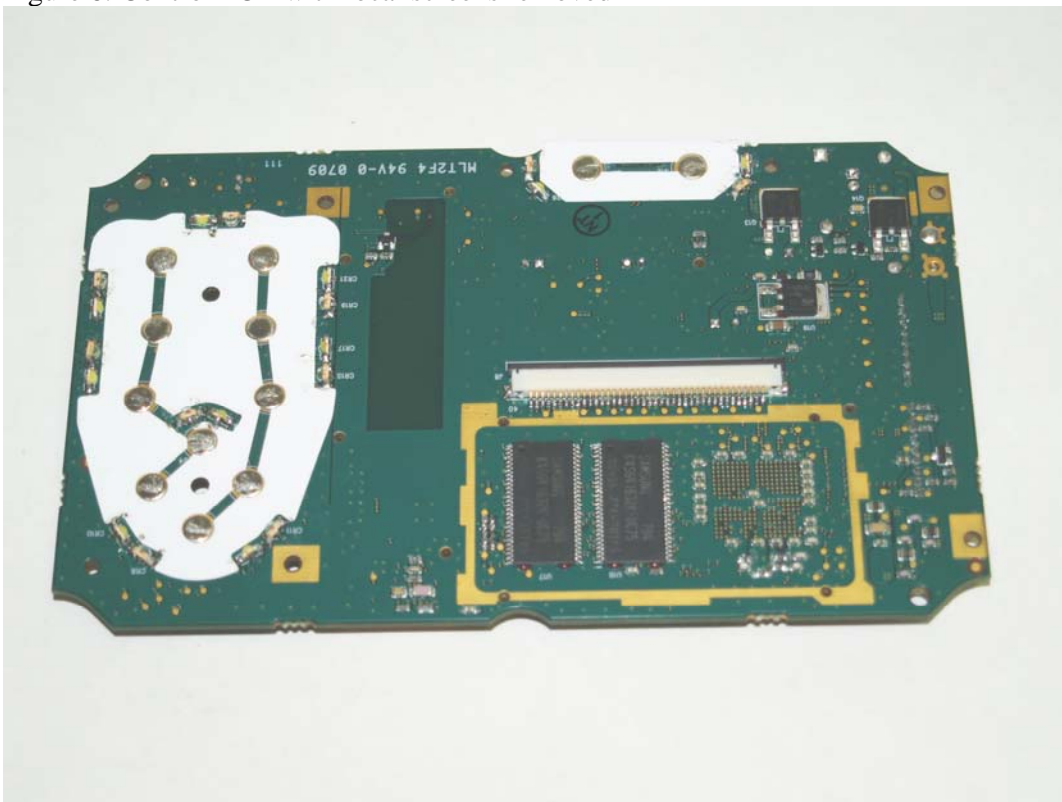


Figure 7: Control PCB keypad side with local screen removed





Figure 8: Control PCB in conjunction with LCD and front panel.

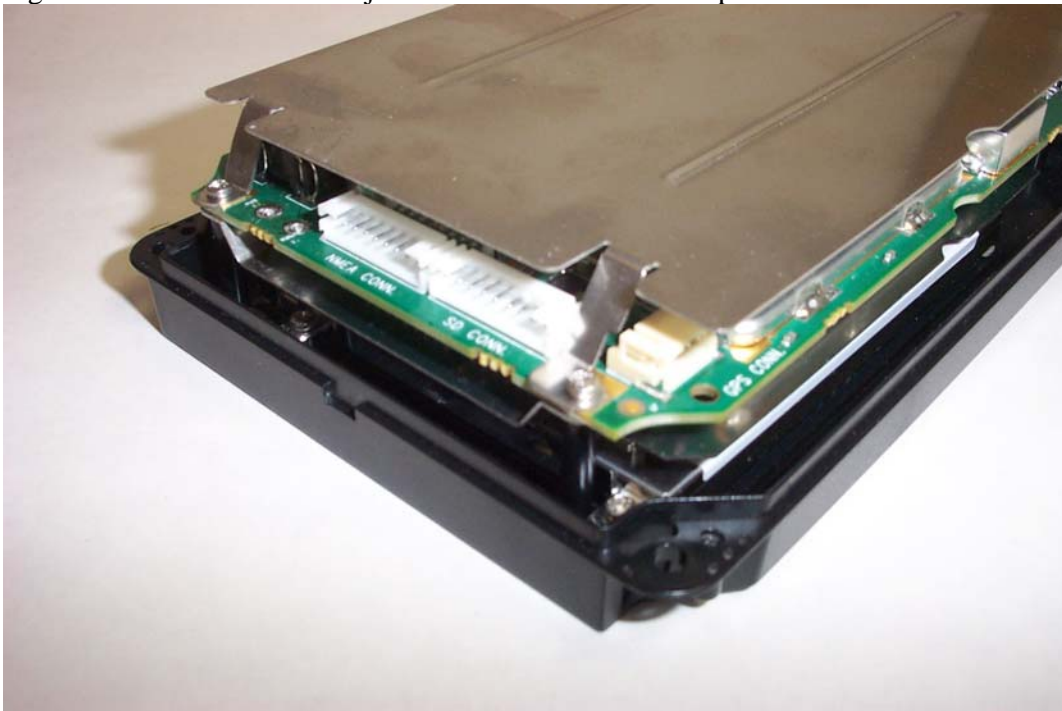


Figure 9: Control PCB showing interconnects



Figure 10: Interior of rear case showing external connector PCB