

TAMIYA 2.4G Transmitter Module
User (Installation) Manual
2.4GTU-01 FCC ID:GHL0001

FCC WARNING Changes or modifications not expressly approved by the party responsible for compliance could void the user's authority to operate the equipment.

This transmitter must not be co-located or operated in conjunction with any other antenna or transmitter.

This equipment complies with FCC radiation exposure limits set forth for an uncontrolled environment and meets the FCC radio frequency (RF) Exposure Guidelines in Supplement C to OET65. This equipment has very low levels of RF energy that are deemed to comply without testing of specific absorption ratio (SAR).

This device complies with Part 15 of the FCC Rules.

Operation is subject to the following two conditions:

- (1) this device may not cause harmful interference, and
- (2) this device must accept any interference received, including interference that may cause undesired operation.

table of contents

- 1 Summary
- 2 Dimension and parts
- 3 Label
- 4 Module setting example
- 5 PCB
- 6 Photo

1 Summary

This module is a Radio control model system for 2.4GHz transmission module.

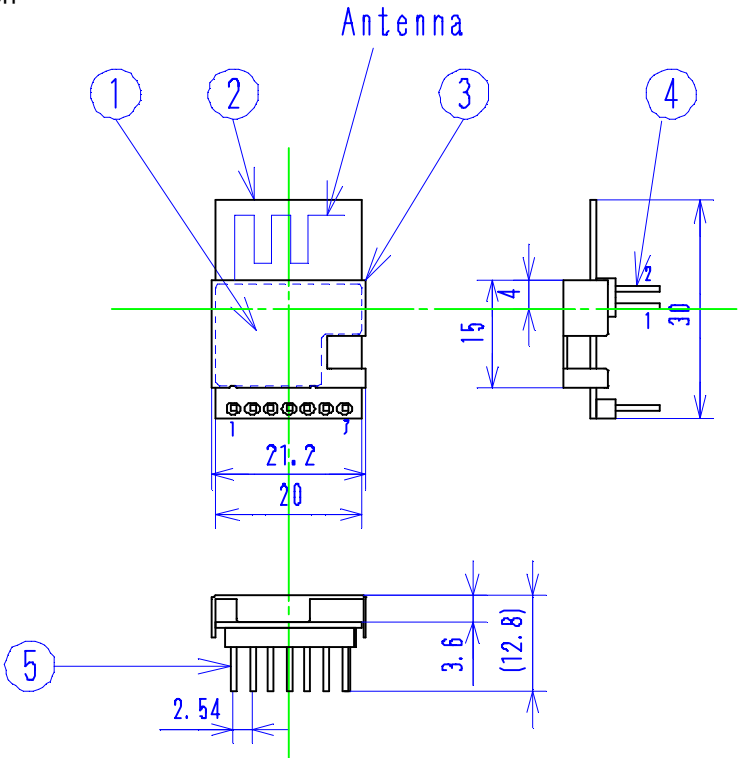
This module can send a model control signal to a receiver by connecting an outside board through an I/O connector.

The control of the electric wave is carried out by an RF – IC implemented by this module.

The antenna implements the pattern antenna by the pattern of the unit board.

2 Dimension and parts

Dimension



parts

Weight 3.5g

5	CONNECT PIN	2.54mm 7PIN	
4	CONNECT PIN	2.54mm 2PIN	
3	SEALD COVER	SPCC 0.4mm	
2	PCB ASSY	FR-4 2LAYER	
1	LABEL	20*14mm	
No	NAME	MATERIAL	COMMENT

3 Label

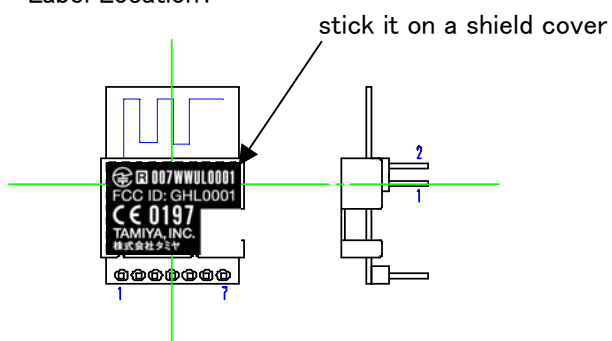
Label1



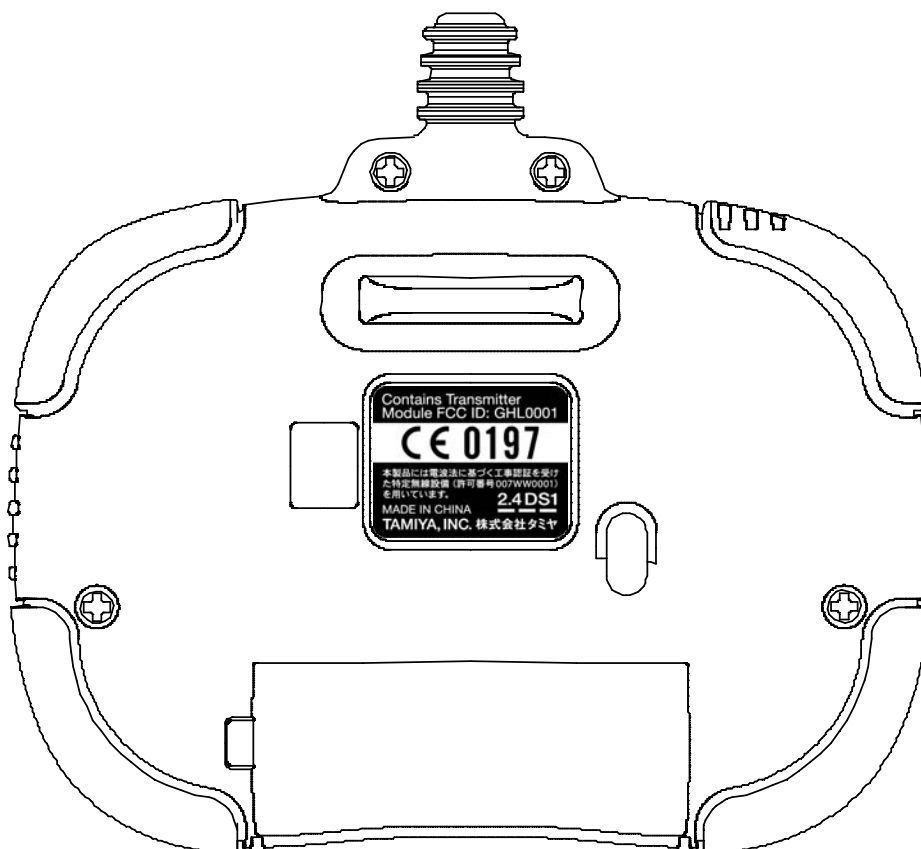
Label2



Label Location1

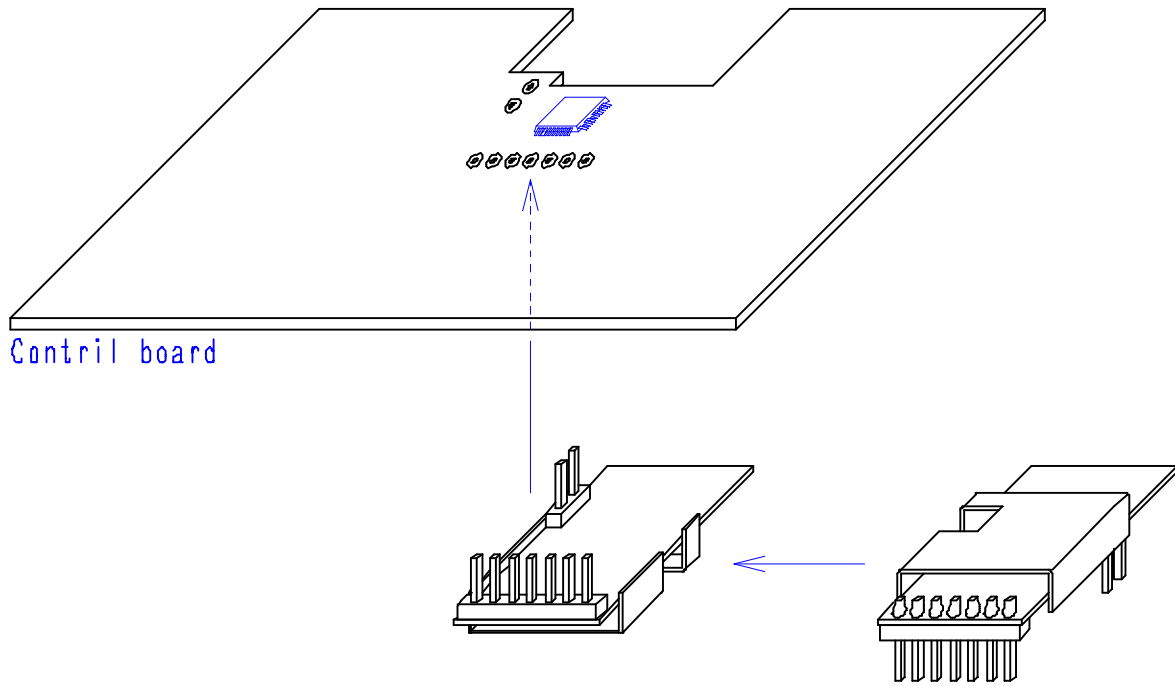


Label Location2(An example)

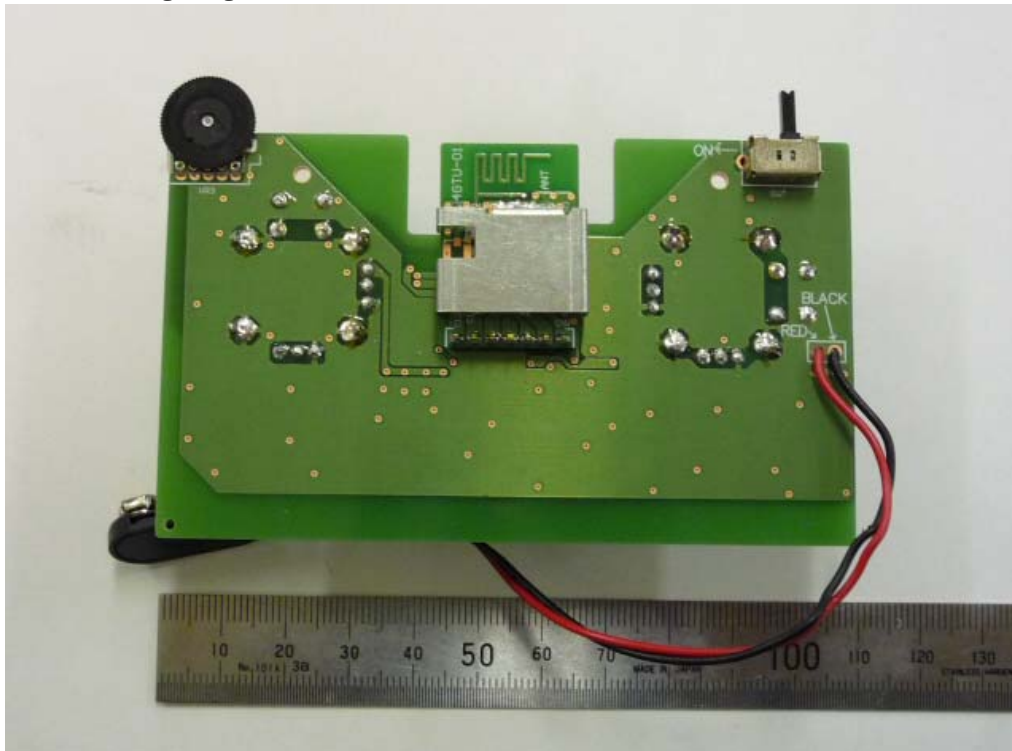


4 Module setting example

- 1 Insert the pin header of the module in the hole of the control board.
- 2 I solder pin header and board nine places.



Module setting image



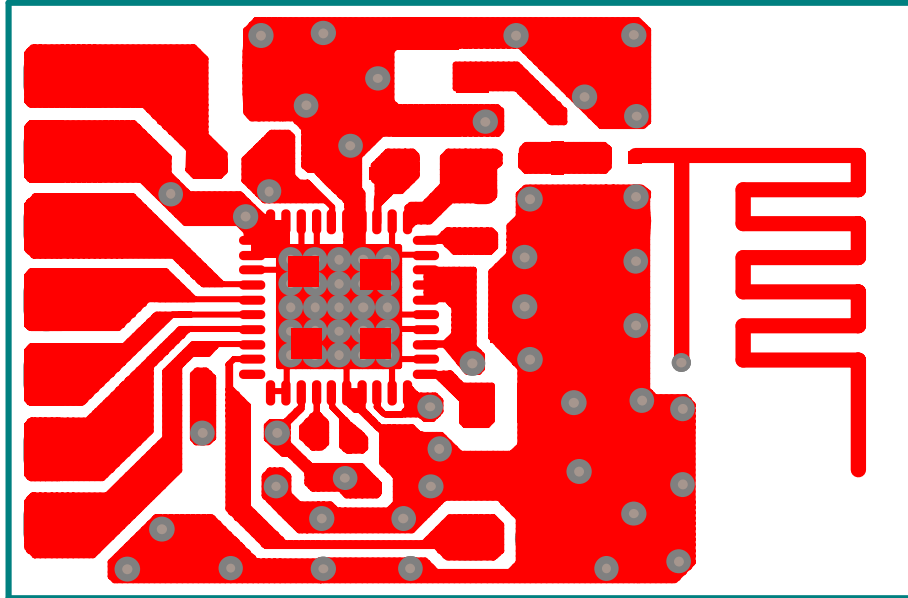
5 PCB

4-1 Spec

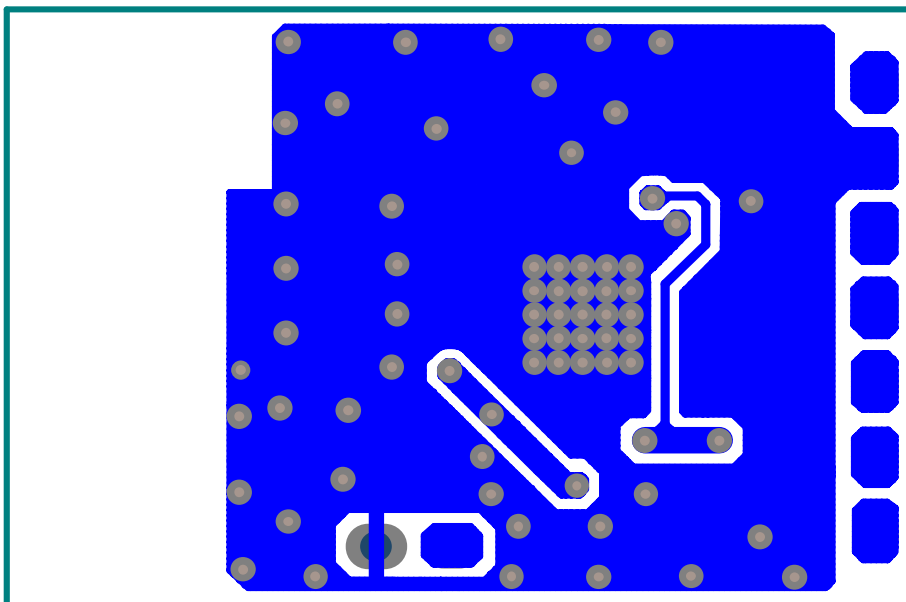
material	FR-4
Thickness	0.8mm
Copper thickness	35 μ

Pattern image

Top layer

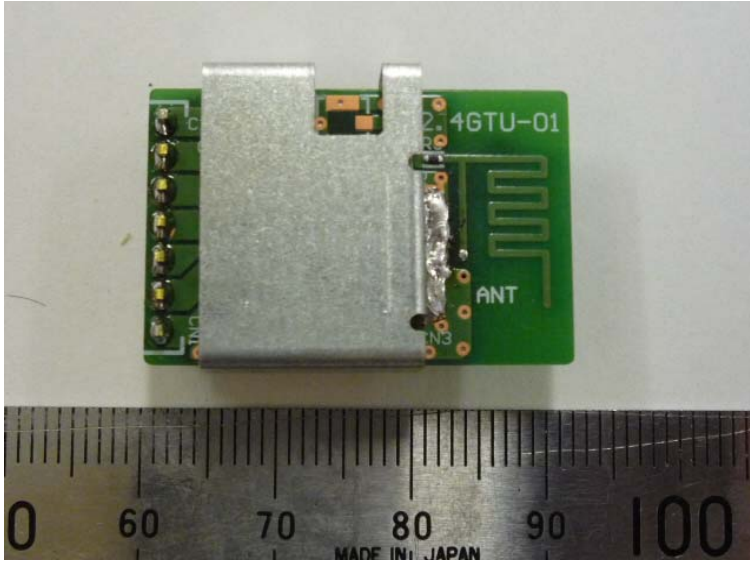


Bottom layer

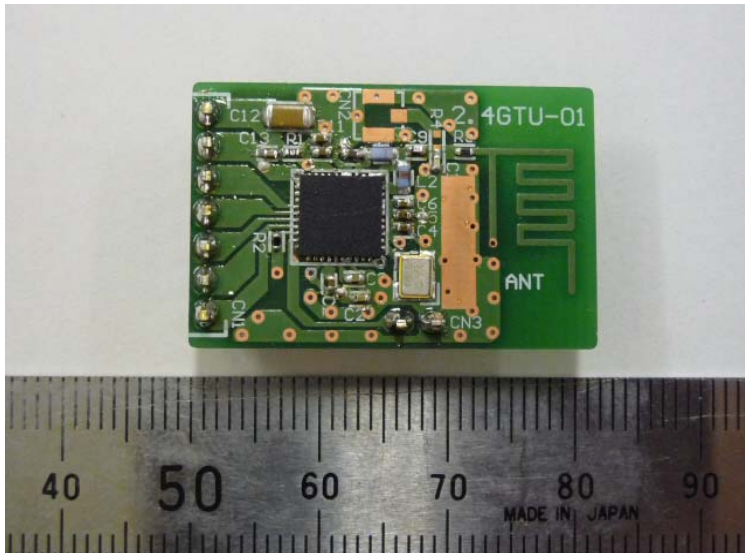


6 Photo

Top view (w cover)



Top view (w/o cover)



Bottom view

