



Inventory Control System



STST1-79222, STST310000



- A) Main unit
- B) Object Tracking Device (Including tie) x5
- C) Mounting bracket
- D) User tag x5
- E) Spare ties x3
- F) USB cable
- G) Screws (bag)
- H) Charger
- I) User manual



IMPORTANT: CHARGE BATTERY

PRIOR TO INSTALLATION UNIT NEEDS TO BE CHARGED FOR AT LEAST 12 HOURS.

PROVIDING YOU WITH STANLEY GUARD INVENTORY CONTROL SYSTEM. YOU CAN FOCUS ON GETTING THE JOB DONE.

STANLEY'S INVENTORY CONTROL SYSTEM ENABLES:

- Full command of your valuable equipment at any time and any place.
- Quick and simple installation and setup.
- No more searching after lost expensive equipment.
- Easily track-down in-use tools on the job site.
- Collect Information and statistics about tools usage.
- Easy and intuitive data presentation in the unit or on your computer.

TABLE OF CONTENTS

GETTING STARTED

ORIENTATION AND BUTTONS	03
OPERATION	04
SET UP AND INSTALLATION	04
MAIN UNIT & BRACKET INSTALLATION	04
HOW TO INSTALL AN OBJECT TAG	05
TURNING SYSTEM ON	06

MAIN UNIT SET-UP (WIZARD)

06

DAILY USE

ARMING THE UNIT	09
TAKING OBJECTS	09
RETURNING OBJECTS	10
ALARM	11
REPORTS	11

MAINTENANCE

12

SETTINGS	12
USERS	12
OBJECTS	14

TURNING SYSTEM OFF

16

CHARGING	16
----------	----

TROUBLE SHOOTING, TIPS & SAFETY

16

WARRANTY

20

TAKE CONTROL OF YOUR JOB SITE



**MONITORS UP TO
50 OBJECTS
AND 30 USERS**

DETECTION RANGE approximately 25' / 8m

**SYSTEM RECOGNIZES
UNAUTHORIZED TOOL-TAKING,
AND SOUNDS AN ALARM**



CHECKING OUT TOOLS IS QUICK AND EASY



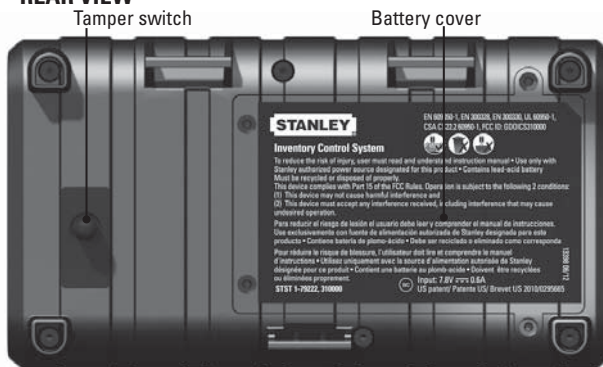
ONLY AUTHORIZED USERS CAN TAKE TOOLS

ORIENTATION AND BUTTONS

FRONT VIEW



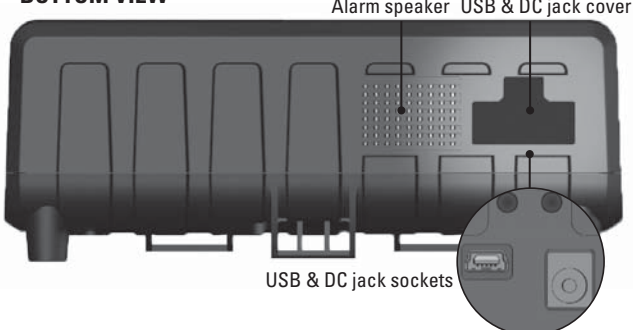
REAR VIEW



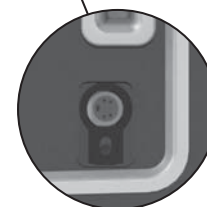
SIDE VIEW



BOTTOM VIEW



Communication port cover



Communication port

OPERATION

Upon purchasing the System, just follow these four simple steps to get it up and running:



Install the Main Unit & Bracket



Attach tracking devices to your objects



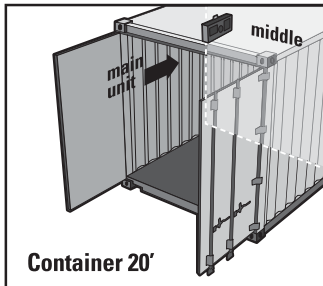
Set-up the Main Unit (Wizard)



Hand user tags to your team

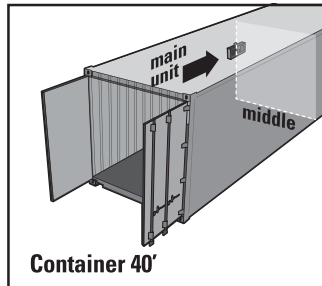
SET UP AND INSTALLATION

MAIN UNIT & BRACKET INSTALLATION



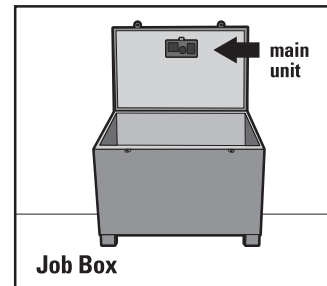
Container 20'

Locate the bracket and main unit at the long internal wall next to the entrance at eye level



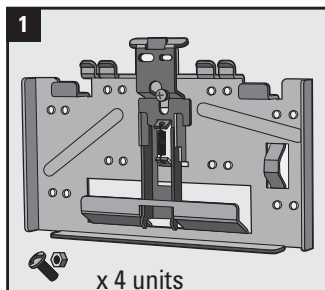
Container 40'

Locate the bracket and main unit at the center of the long internal wall at eye level

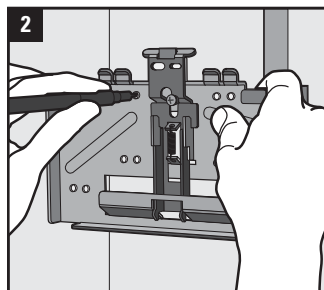


Job Box

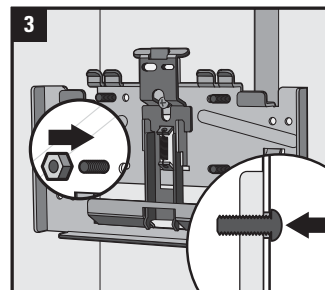
Locate the bracket and main unit at the inner part of the cover at eye level



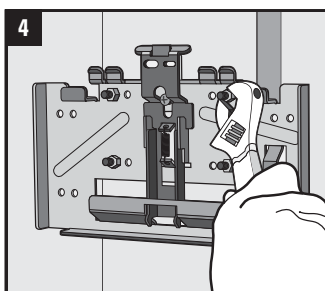
Components include: bracket, screws and nuts



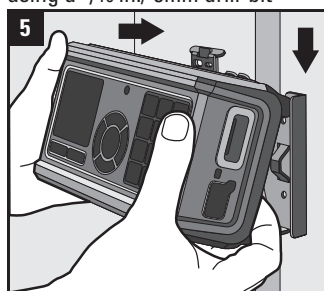
Place bracket at the preferred location, mark the holes and drill using a $\frac{3}{16}$ in./ 5mm drill-bit



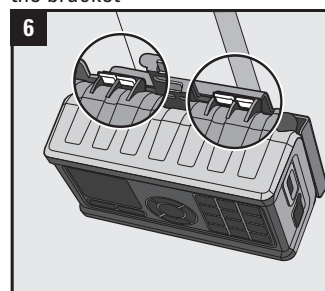
Insert the screws from the outside. **NOTE:** It is also possible to weld the bracket



Tighten the nuts from the inside



Slide the main unit over the two hooks on top of the bracket

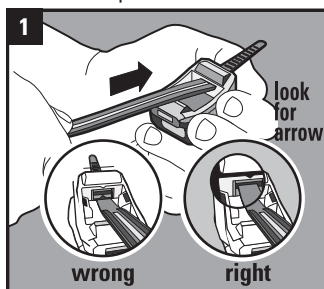


Push bottom of main unit against the bracket until it clicks in place

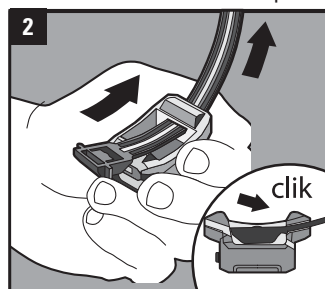
HOW TO INSTALL AN OBJECT TRACKING DEVICE



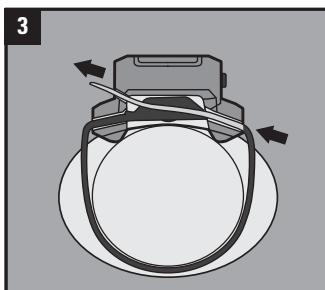
NOTE:
PLACE THE DEVICE ON YOUR TOOL.
SELECT A SPOT WHERE THE DEVICE
WILL NOT INTERFERE WITH THE
TOOL'S OPERATION



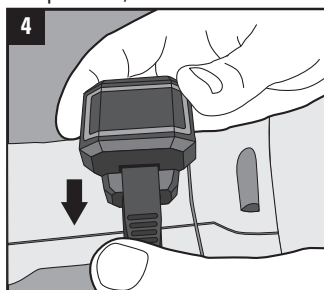
Insert a tie-wrap into the upper hole below the black arrow. (Note : tie wrap may be already in this position)



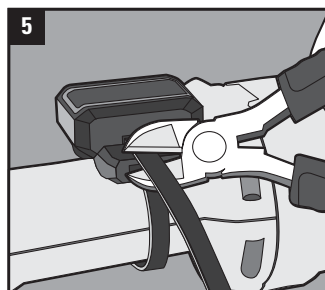
Pull the tie-wrap outside until the tie-wrap lock clicks at the bottom



Wrap the tie-wrap around the tool, and insert the open end through the tag into the lock



Push the tie-wrap through the lock until it comes out of the tag. Pull and tighten the tie-wrap



Cut the loose end close to the tie's hole. Make sure tie-wrap is properly cut to prevent injury

TURN ON THE SYSTEM



Press the power key until the system lights up and the welcome screen appears

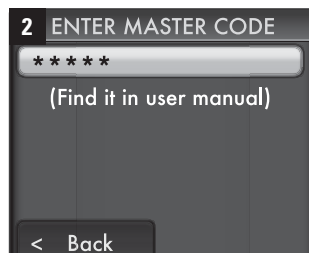


MAIN UNIT SET-UP (WIZARD)

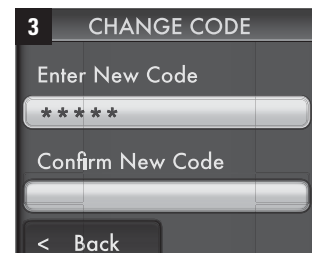
Follow the quick wizard to start working with the system.



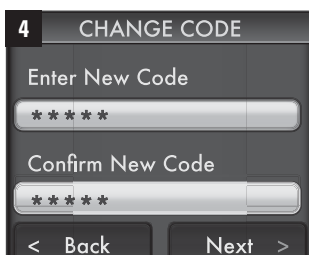
Select "Language" and choose the main language for the system interface



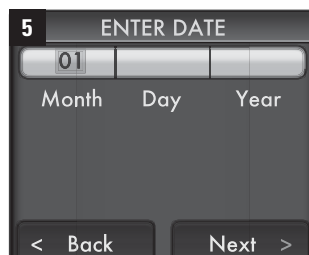
Default master code is 12345



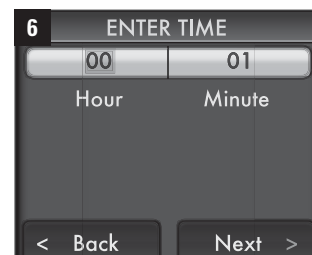
Choose a new 5 digit code



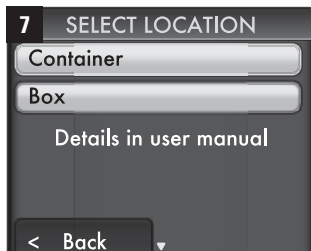
Confirm the new code and then press "next" to continue



Use the keypad and navigation keys to set the date, and then press "next" to continue



Use the keypad and navigation keys to set the time, and then press "next" to continue



Select the option that best fits the site where the system will be used. Press "OK" to continue



NOTE:
**THIS WILL OPTIMIZE THE
DETECTION RANGE TO THE
LOCATION OF YOUR SYSTEM**



Get the tag that you yourself will be using. This will be the "Master Tag"



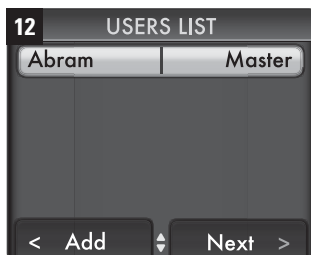
Insert your user tag to the slot on the right side of the unit



Enter your name using the keypad, and then press "next" to continue



View the settings and press "Approve" to continue, or press "Back" if you need to correct an entry



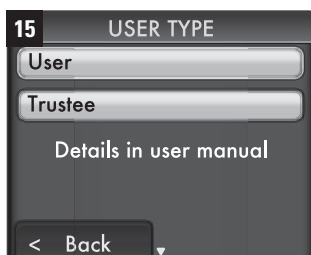
Displays users that are currently defined in the system. Press "Add" button to add new user



Insert more user tags for your employees. You can define up to 30 users



Type each employee's name and then press "next"

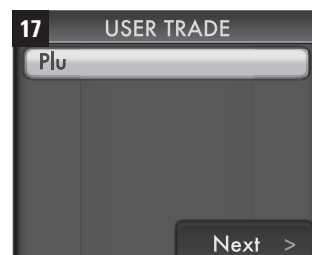


Select the user's Status: User or Trustee (*), and then press "OK" to continue



Select interface language for a specific tag holder. Press "OK" to approve

(*) User – authorized to take and return tools | Trustee – In addition to the above, can turn the system off and turn off alarms



Use the keypad to enter a user's trade and then press "next" to continue (optional)

18 USERS LIST

Abram	Master
Bob	Trustee
Carl	User

< Add Next >

Either Press "add" to add more employees or press "next"

TOOL SET UP

1 ADD NEW OBJECT

ATTACH TAG TO OBJECT
AND PRESS TAG'S
BUTTON

< Back

Press the first object device you wish to upload to the system



Press device button

3 OBJECT NAME

Enter the name of the object you have just uploaded. (This field is mandatory).
Press "next" to continue

4 COMMENT (optional)

Blue

< Back Next >

Add a comment (Optional) and press NEXT to confirm

5 VALUE (optional)

100\$

< Back Finish

Add the object's value (Optional) and press "Approve" to complete the operation

6 OBJECT LIST

Ladder
DeWALT hammer

Add Finish

Select "Add" to add more objects. You can add up to 50 objects, or press "finish" to complete the wizard



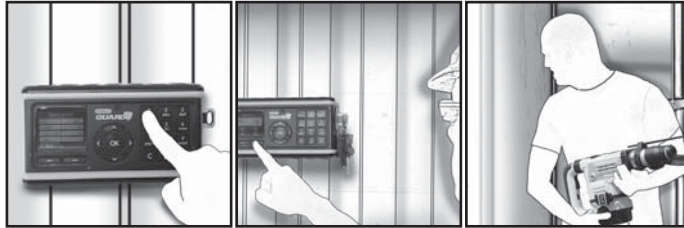
**FOR FURTHER DETAILS ON
SYSTEM SETUP
PLEASE SKIP TO PAGE 12
(MAINTENANCE)**

SET UP IS COMPLETE.

INSERT YOUR MASTER TAG TO GET IT WORKING.

DAILY USE

ARMING THE UNIT



Check in/out tools

Real time status report
at a press of a button

Deter unauthorized
people from taking tools



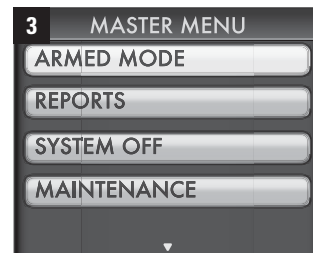
Providing you with your own digital control so you can focus on getting the job done.



1 Make sure the main unit is
properly attached to the bracket



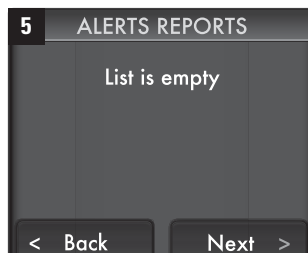
2 SYSTEM NOTIFICATION
Insert master tag or enter the
master code



3 MASTER MENU
Use the navigation keys, select
Armed Mode and press OK



4 SYSTEM NOTIFICATION
Data collection and transition to
armed mode will take 30 seconds



5 ALERTS REPORTS
Check the alerts reports.
Remove master tag or press next
to take or return objects

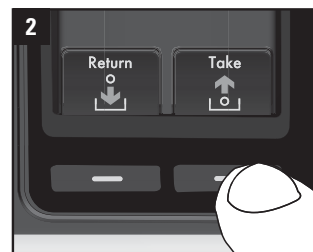


6 Red LED begins to flicker and the
screen enters sleep mode.
The system is now armed and the
tools are secured

TAKING OBJECTS



1 Insert your user tag. The system
displays the number of tools in
your possession.



2 Press "Take"



Press the tags of the tool you wish to take



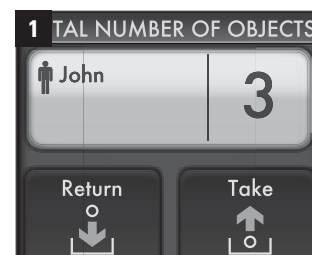
Press "Approve"



If the wrong object was selected, remove it by pressing "X"



Remove your user tag



Insert your user tag.
The system displays the number of tool already in your possession.



Press "Return"



Press the tags of the tool you wish to return



Press "Approve"



Remove your user tag



**IF USER TAG IS LEFT IN SLOT,
AFTER 20 SECONDS A WARNING
SOUND WILL START AND AFTER A
MINUTE THE TAG WILL BE FROZEN.
TO UNFREEZE GO TO PAGE 13**