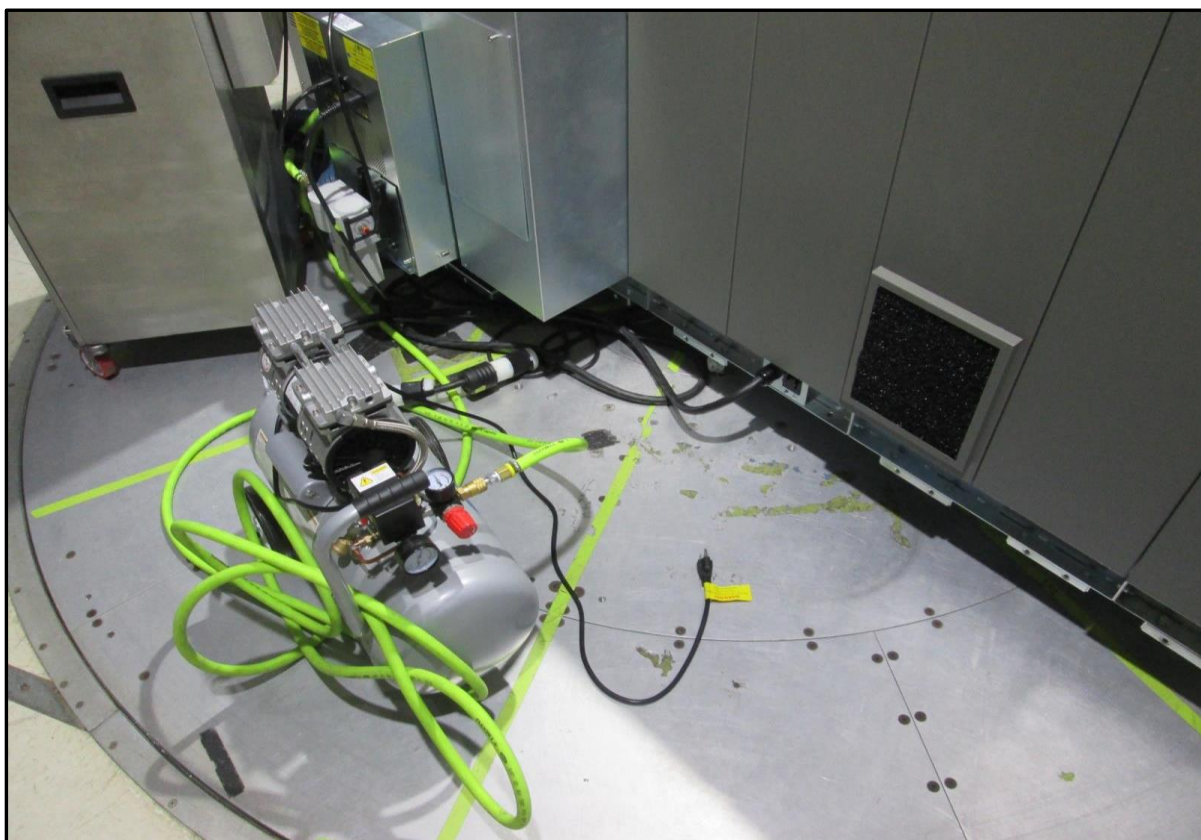
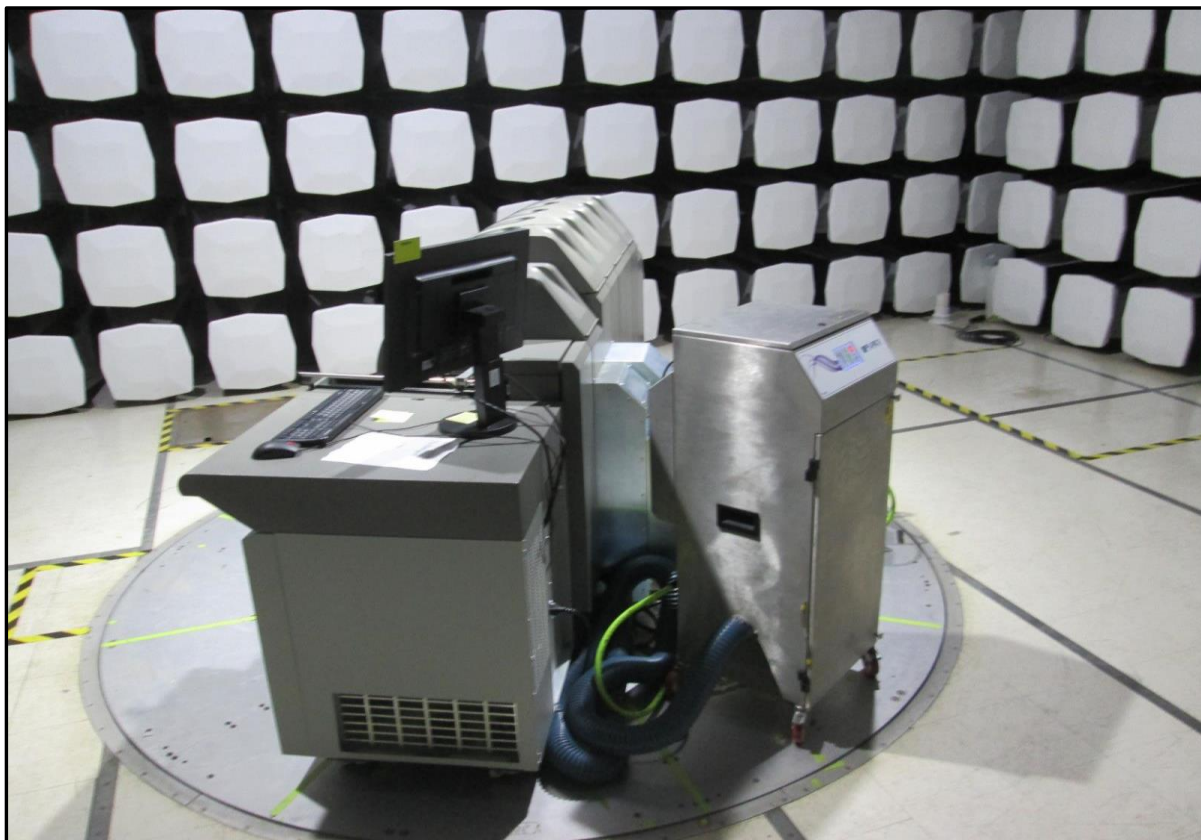


# FIELD STRENGTH OF FUNDAMENTAL

PSA-ESCI 2021.03.17.0

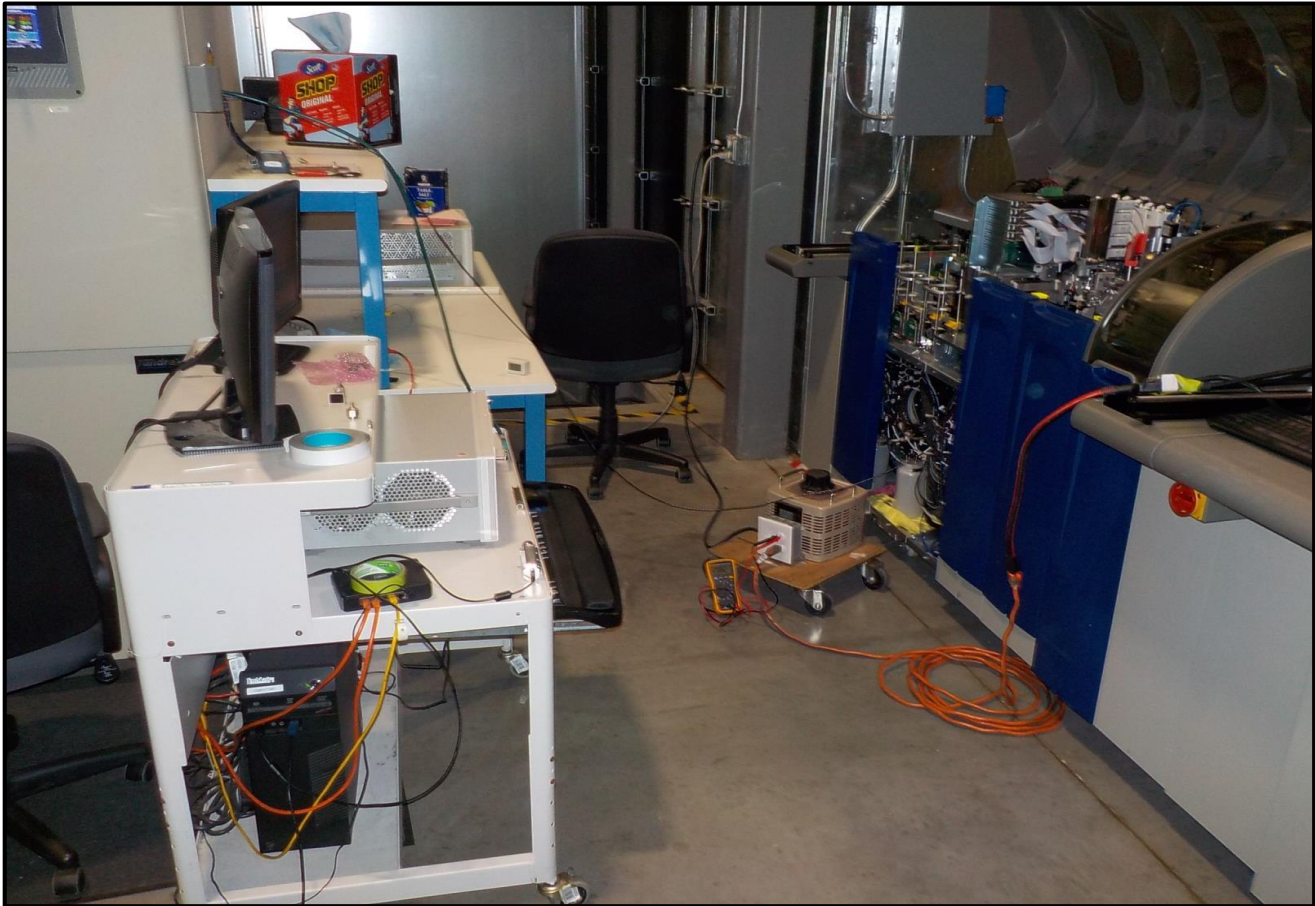


# FREQUENCY STABILITY





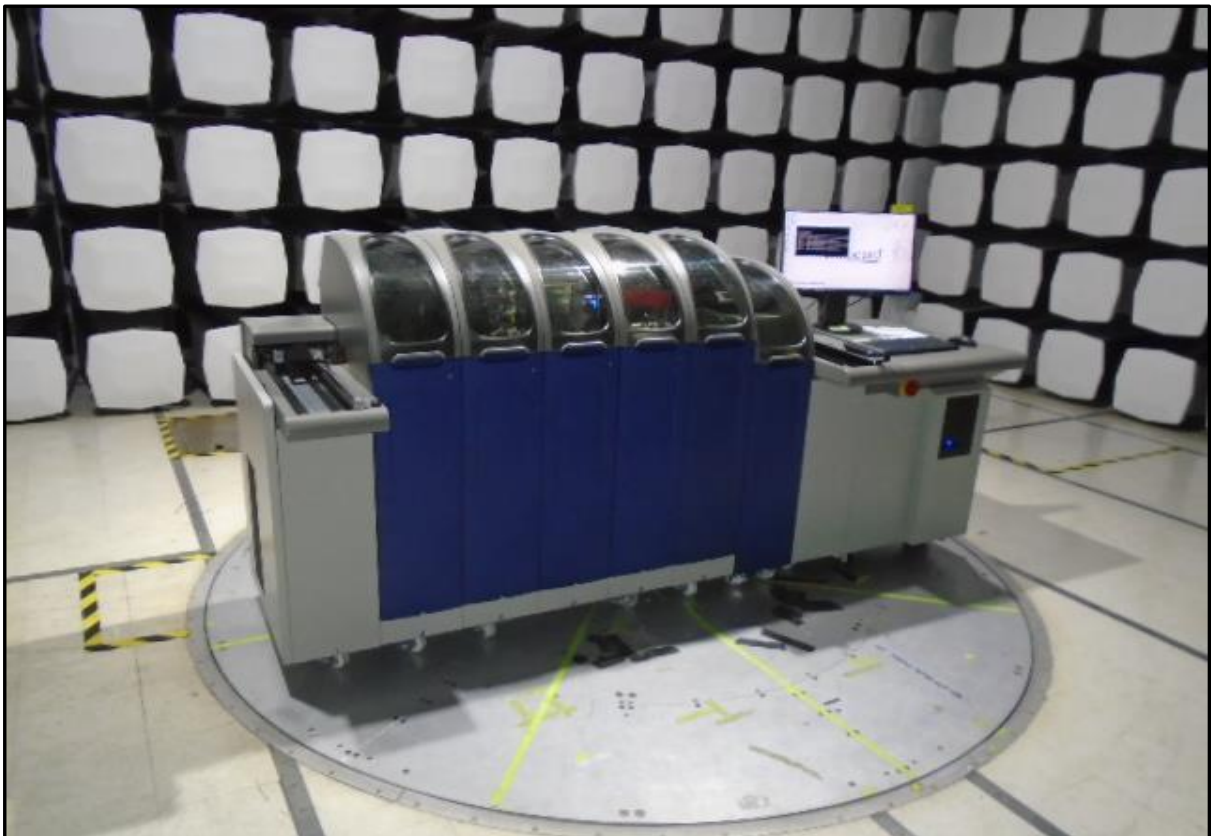
# FREQUENCY STABILITY



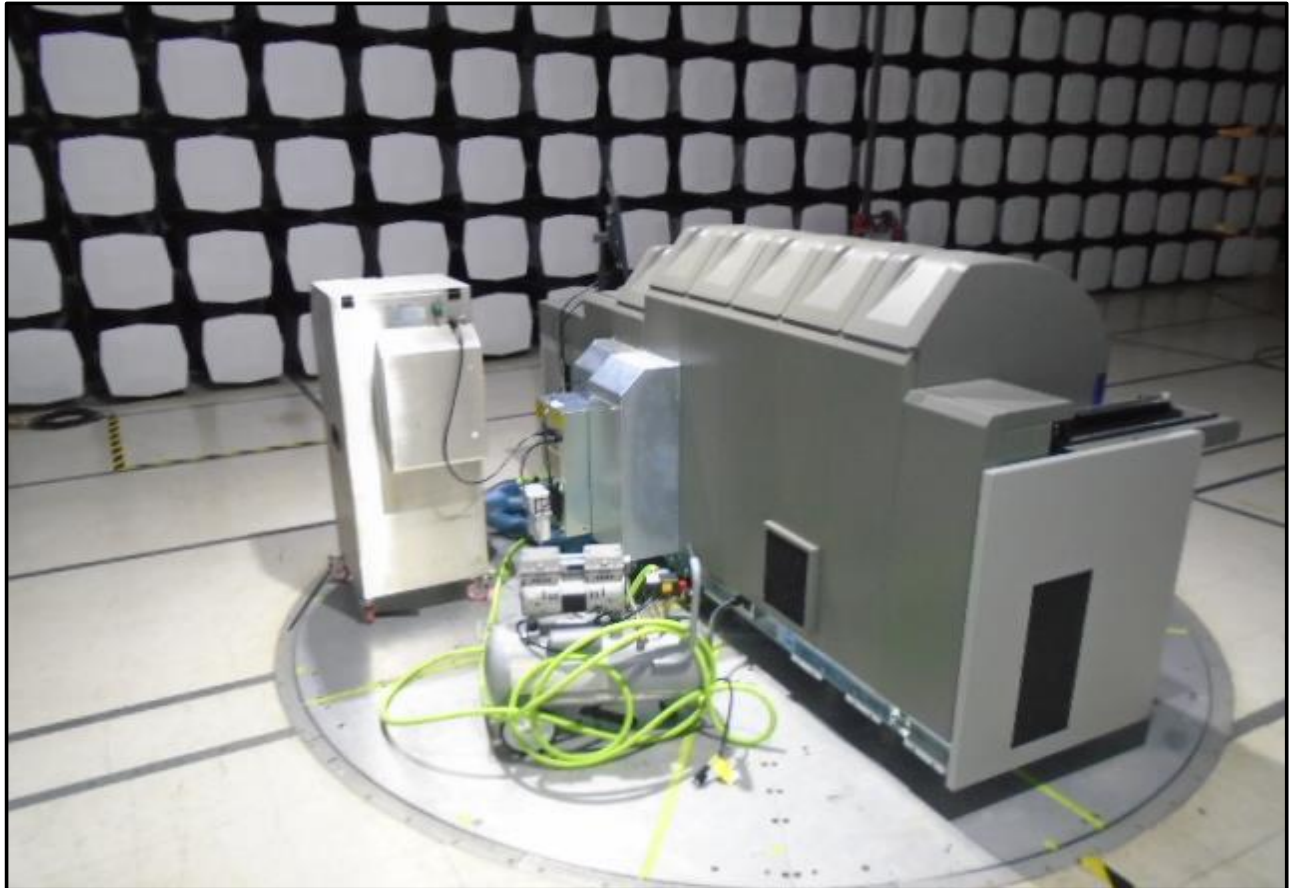
# FIELD STRENGTH OF SPURIOUS EMISSIONS (LESS THAN 30 MHz)



PSA-ESCI 2021.03.17.0



# FIELD STRENGTH OF SPURIOUS EMISSIONS (LESS THAN 30 MHz)

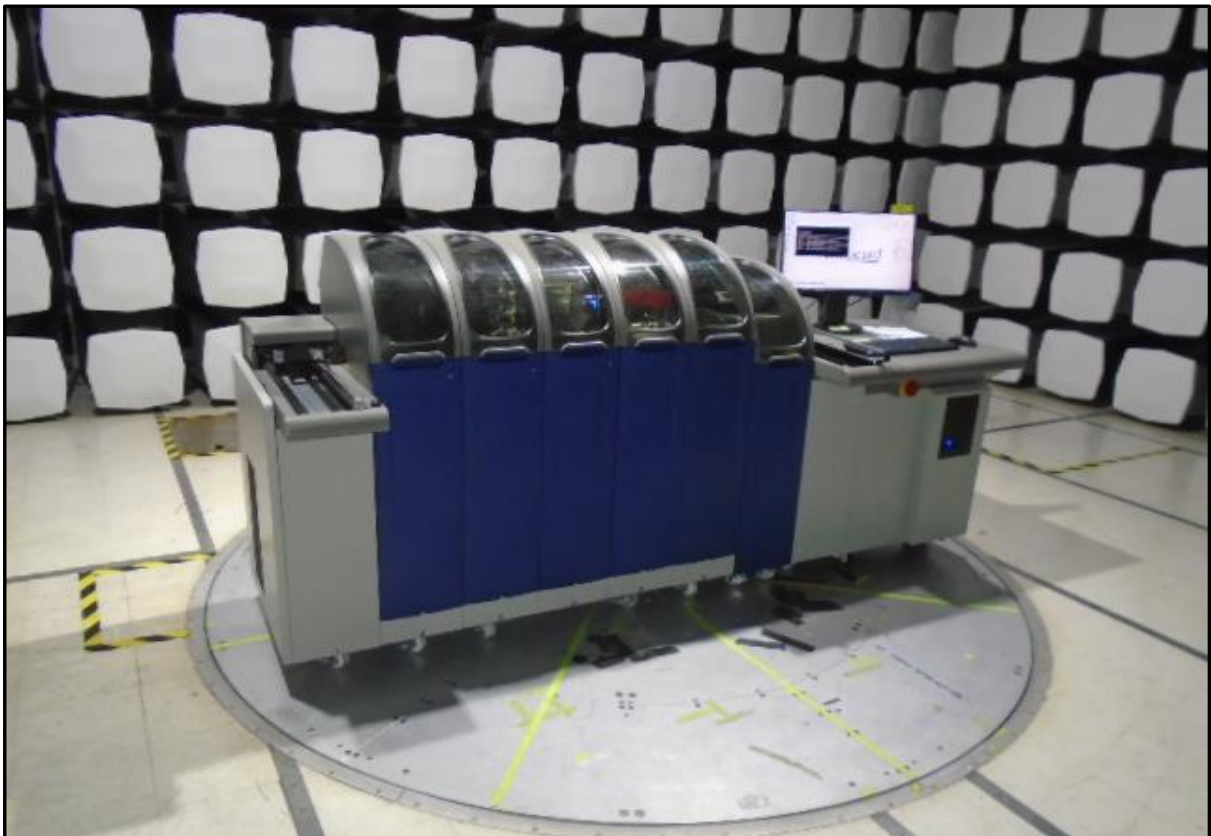




# FIELD STRENGTH OF SPURIOUS EMISSIONS (GREATER THAN 30 MHz)



PSA-ESCI 2021.03.17.0



# FIELD STRENGTH OF SPURIOUS EMISSIONS (GREATER THAN 30 MHZ)

