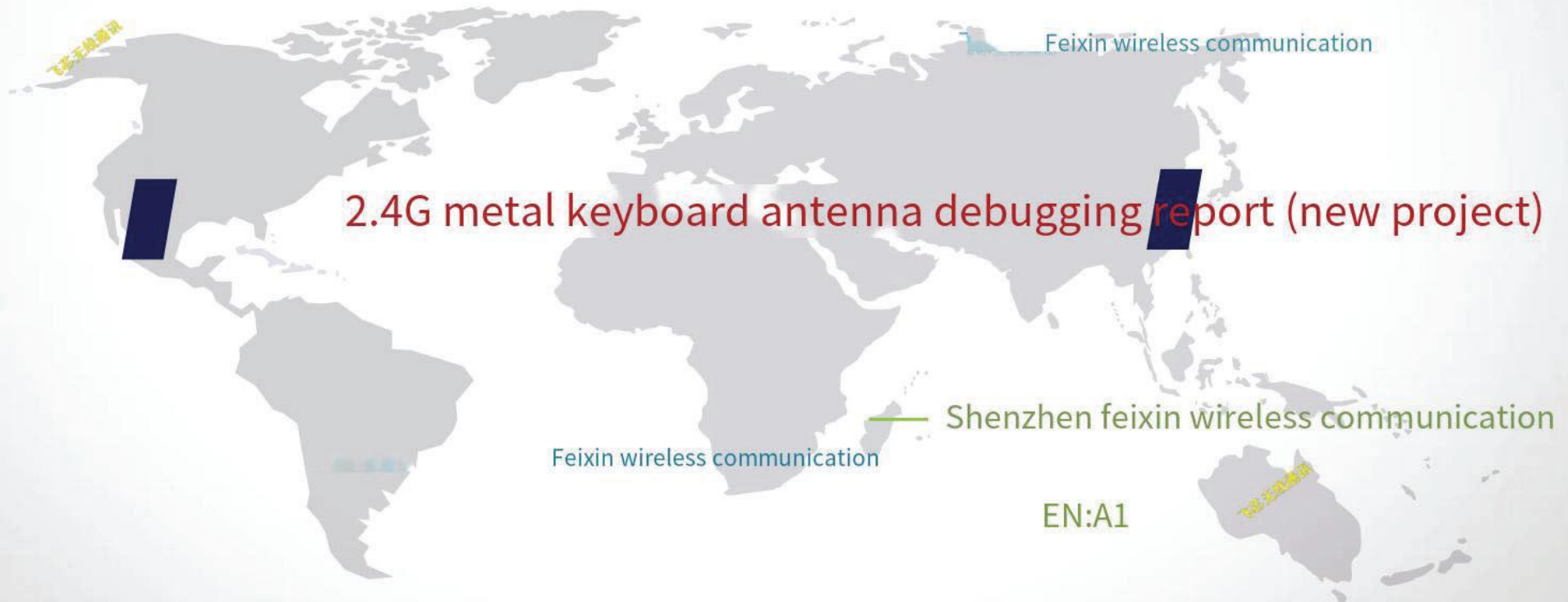




# Shenzhen feixin wireless communication co., ltd

Shenzhen Feixin Wireless Communication Co., Ltd.



Shenzhen Company: 3rd Floor, Building A, Changjing Robot Industrial Park, Huanguan Middle Road, Guanhu Street, Longhua District, Shenzhen  
Shanghai Company: Room 202, Building 16, No.618 Dingyuan Road, Songjiang District, Shanghai.

<http://www.flxant.com>

## Overview of the whole machine:



### Overview:

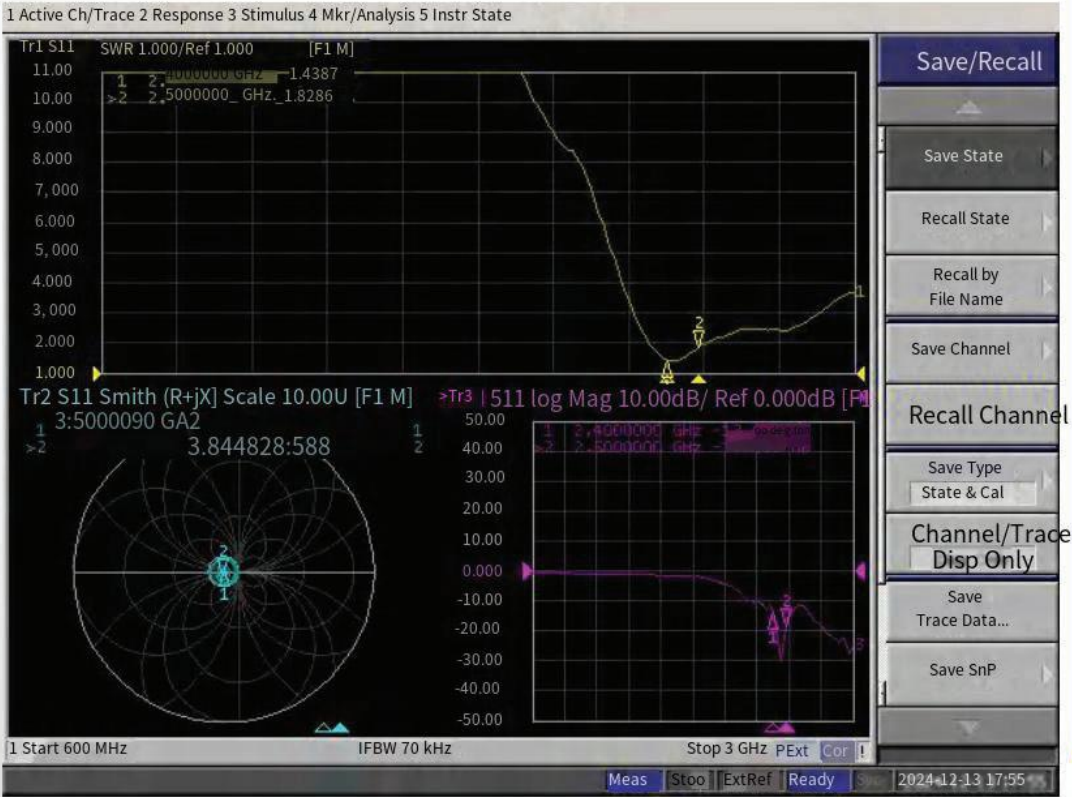
The whole machine is currently equipped with FPC antenna;

Operating frequency: 2400—2500MHZ.

# S11 test data



S11 (VSWR, Return loss, Smith) 数据



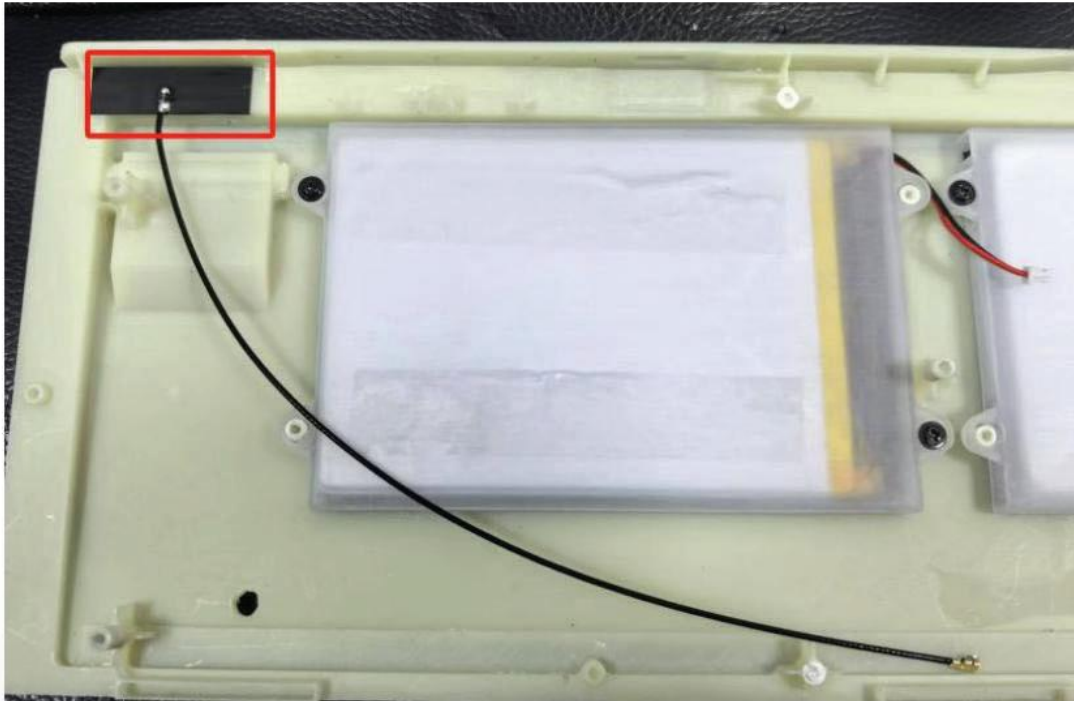
Test Point ID	Freq. (MHz)	Gain (dBi)	Efficiency cy(%)
one	2400.0	1.07	47.9%
2	2410.0	0.78	42.6%
3	2420.0	1.60	49.1%
four	2430.0	1.17	44.0%
five	2440.0	2.00	50.4%
six	2450.0	2.03	49.9%
seven	2460.0	2.37	50.0%
eight	2470.0	2.44	49.7%
9	2480.0	2.43	46.8%
10	2490.0	2.73	50.2%
11	2500.0	2.51	45.9%

Note: The greater the efficiency percentage value and gain value, the better the antenna.



## Antenna design layout position:

The antenna description has been modified.



Description: antenna connecting wire 1.13 black wire l 200mm 1st generation IPEX terminal

Antenna Test Report (Passive-BW)

Date: 2024/12/14

Comments:  
This antenna is good. Yeah!

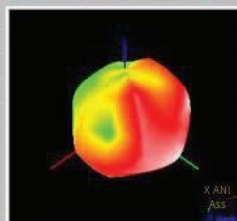
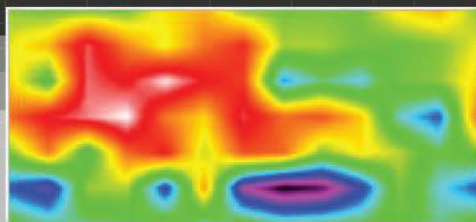
Test Point ID	Freq. (MHz)	TRP (dBm)	Gain (dBi)	Directivity (dBi)	Efficiency (%)	Efficiency (dB)	Max (dBm)	Theta of Max	Phi of Max	Min (dBm)	Theta of Min	Phi of Min	AVG (dBm)	Max/Min (dB)	Max/AVG (dB)	Min/AVG (dB)
one	2400.0	2400.00	1.07	4.26	47.9%	-3.19	1.07	90	90	-12.95	150	210	-3.67	14.02	4.74	-9.28
2	2410.0	2410.00	0.78	4.48	42.6%	-3.71	0.78	60	120	-14.28	150	210	-4.17	15.06	4.94	-10.11
three	2420.0	2420.00	1.60	4.69	49.1%	-3.08	1.60	60	120	-14.27	150	210	-3.54	15.87	5.14	-10.72
4	2430.0	2430.00	1.17	4.74	44.0%	-3.57	1.17	90	90	-14.84	150	210	-4.01	16.01	5.18	-10.83
five	2440.0	2440.00	2.00	4.98	50.4%	-2.97	2.00	90	90	-14.50	150	210	-3.43	16.51	5.43	-11.07
six	2450.0	2450.00	2.03	5.05	49.9%	-3.02	2.03	90	90	-14.36	150	210	-3.46	16.38	5.49	-10.90
seven	2460.0	2460.00	2.37	5.38	50.0%	-3.01	2.37	90	90	-14.22	150	210	-3.45	16.59	5.82	-10.77
eight	2470.0	2470.00	2.44	5.47	49.7%	-3.03	2.44	90	90	-14.02	150	210	-3.45	16.45	5.89	-10.56
nine	2480.0	2480.00	2.43	5.73	46.8%	-3.30	2.43	90	90	-14.57	150	210	-3.72	17.00	6.15	-10.85
10	2490.0	2490.00	2.73	5.72	50.2%	-3.00	2.73	90	90	-14.58	150	210	-3.39	17.30	6.12	-11.19
11	2500.0	2500.00	2.51	5.89	45.9%	-3.38	2.51	90	90	-15.56	150	210	-3.77	18.07	6.27	-11.79

Go to Cover Page

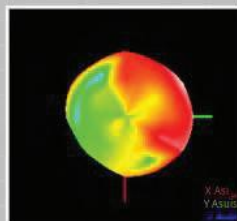
Passive-Freq2400.00MHZ

	0	30	60	90	120	150	180	210	240	270	300	330	360
100-500	-5.11	29.41	-8.82	14.11	-3.83	-3.15	-2.5	-1.2	0.1	-4.62	3.65	-6.68	-5.29
100-500	-6.21	3.23	0.00	2.33	-2.15	2.27	1.7	0.1	-4.62	3.65	-6.68	-5.29	-
100-500	-7.49	8.11	0.00	-0.75	0.83	-0.89	1.50	-0.67	-8.89	7.51	-5.65	-6.19	-
100-500	9.20	-0.65	0.22	1.07	2.36	-3.69	-0.21	2.19	-1.84	-3.45	7.49	-8.96	-
100-500	84	7.41	-6.51	-2.14	-0.36	-6.64	-1.74	-2.07	-5.25	3.85	-4.65	-	-
100-500	259	18.39	-4.87	5.76	8.61	4.90	-11.18	-12.85	-12.66	5.72	6.26	-7.85	-
100-500	-6.65	-7.12	7.54	-2.61	3.88	7.65	-	-	-	-	-	-	-
100-500	-5.71	-7.04	-10.60	-8.82	-4.48	-3.90	-	-	-	-	-	-	-
100-500	-5.05	8.51	-14.40	-18.79	-11.69	-4.58	1.25	36	66	-7.04	-5.81	-5.73	-
100-500	-5.29	-8.01	3.17	-4.91	24.00	-18.68	-90	84.71	16.95	763	8.10	-	-
100-500	-2.28	-1.78	-26.91	-5.08	0.72	4.52	-1.76	-8.49	-8.00	-11.09	-10.33	-	-
100-500	3885	-22.43	-24.84	-23.42	-5.97	-7.19	-14.42	-4.49	-13.26	-7.69	-4.51	-9.86	-
100-500	10.92	-12.18	8.62	-20.22	13.15	-9.7	-24.21	13.13	-13.2	7.54	-8.66	-	-
100-500	-14.82	-18.01	-10.6	0.6	6.36	38.5	-	-	2	-	-	-	-
100-500	3	-	-7.51	-	-9.35	-	-	-	-	-	-	-	-
100-500	11.05	-10.45	6.65	-8.05	12.37	4	-	-	-	-	-	-	-
100-500	10.14	-4.78	1883	2.83	-8.69	5.28	-21.00	18.9	0.00	10.50	1.59	-15.40	-
100-500	8.64	-10.63	-1	2.21	0.91	-1.13	6.23	-12.38	-9.59	-1	-13.49	-9.22	-
100-500	10.11	-7.03	0.92	-0.14	-3.49	-10.80	5.44	-3.34	-2	2.42	-10.69	-49.82	-
100-500	49.03	-2.45	1883	-17.9	-1	-	-	-	-	-	-	-	-
100-500	-22.19	-15.11	-3.7	-5.48	-10.14	-4.04	-11.40	-17.00	-20.38	-12.95	-	-	-
100-500	-8.63	-7.42	-8	-	-14.65	-10.92	-	-	-	-	-	-	-
100-500	-9	-	-13.82	-	-	-	-	-	-	-	-	-	-
100-500	36	-	-	-	-	-	-	-	-	-	-	-	-

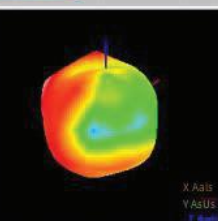
Go to Cover Page



T45-P45



TD-PO



-141

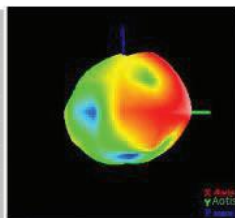
4.71

-5.53

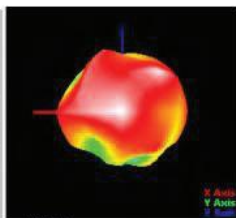
-8

T45-P225

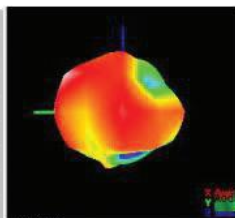
Coordination System  
Description: Line Color XYZ  
Theta-Phi  
Red L Axis X  
Green L Axis Y  
Blue L Axis Z



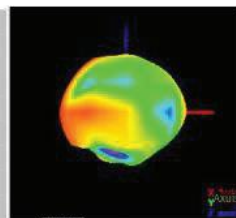
T00-P0



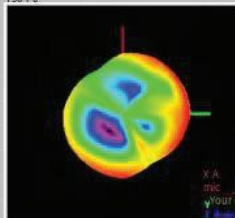
T90-P0



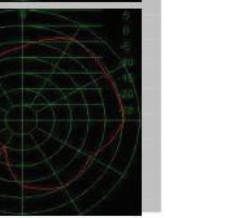
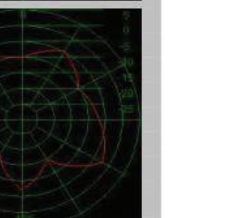
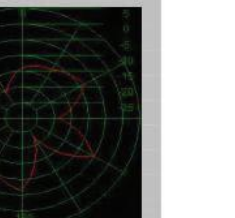
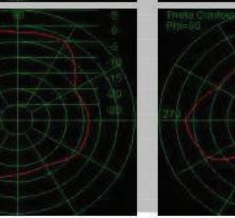
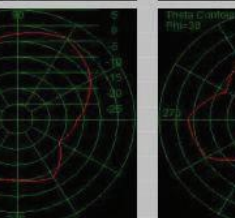
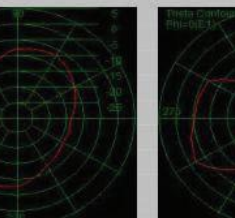
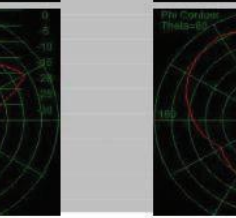
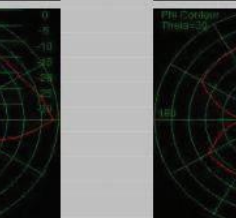
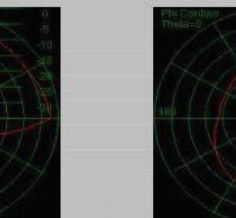
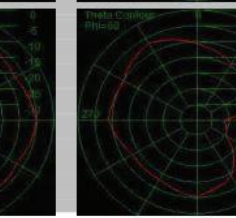
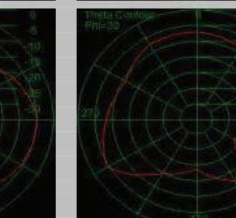
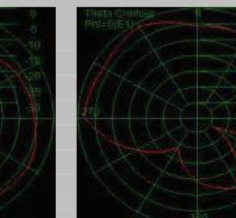
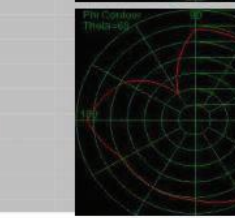
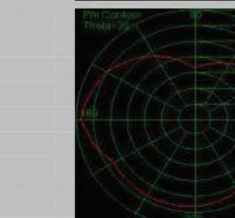
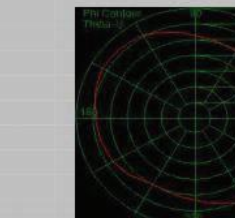
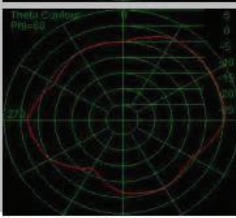
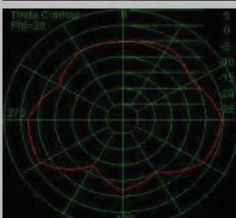
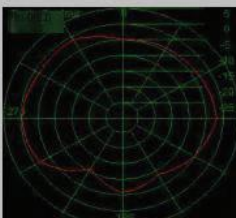
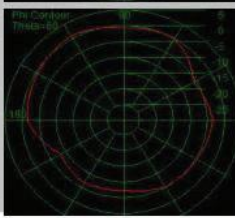
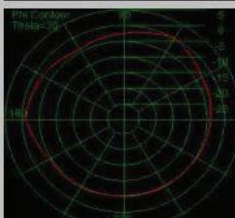
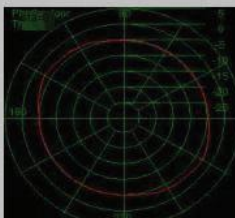
T90-P100



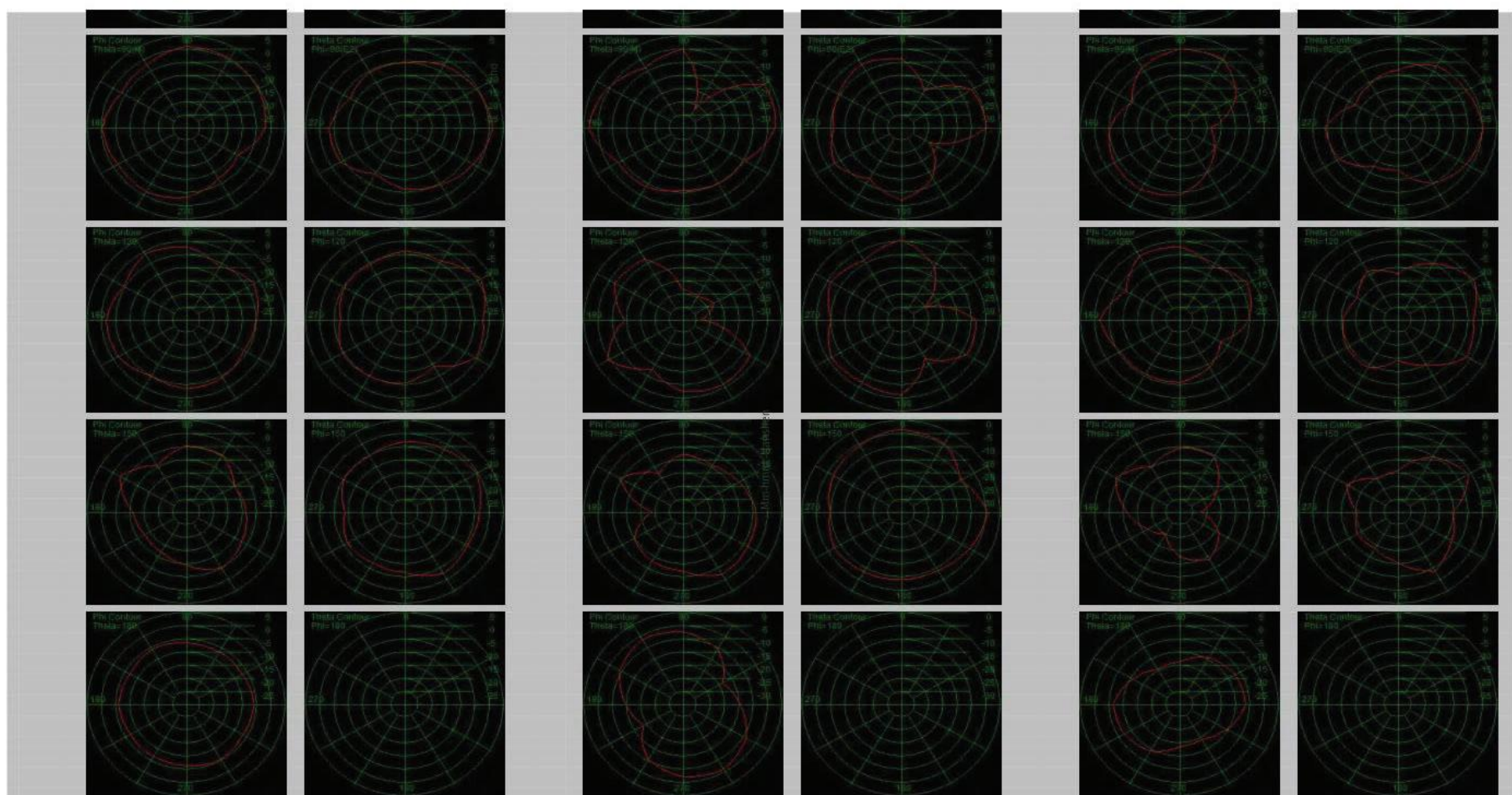
T90-P270



T180-P0









Thank you

