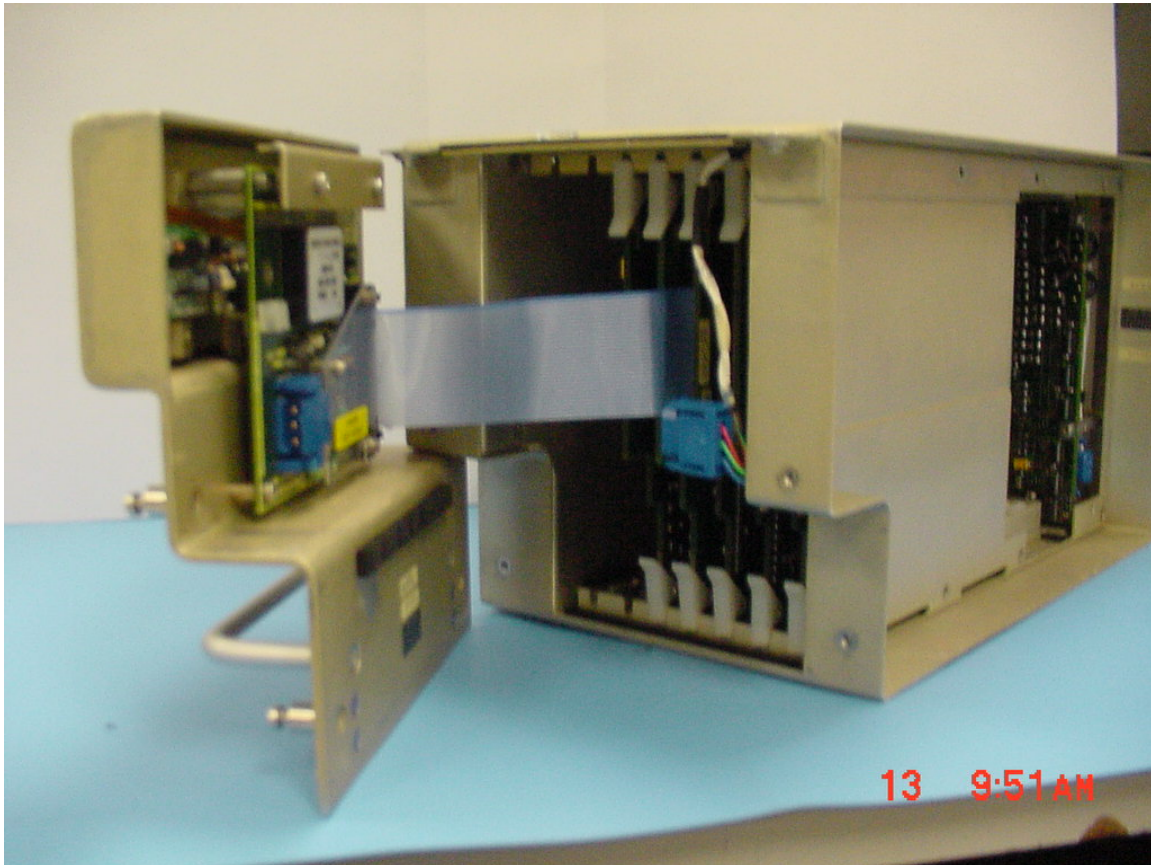
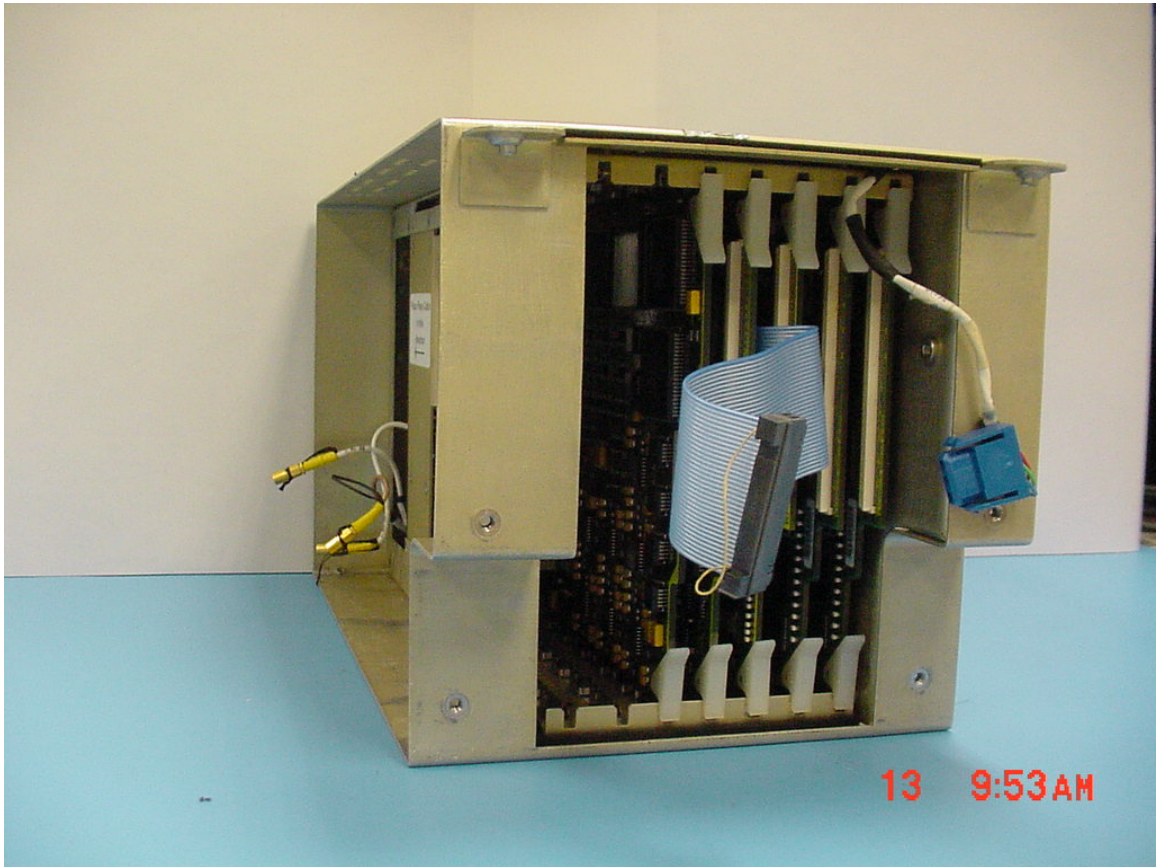


SD-720 Internal Photos

Front open, PSU removed (right side)



Front Plate removed, RFM removed (left side)

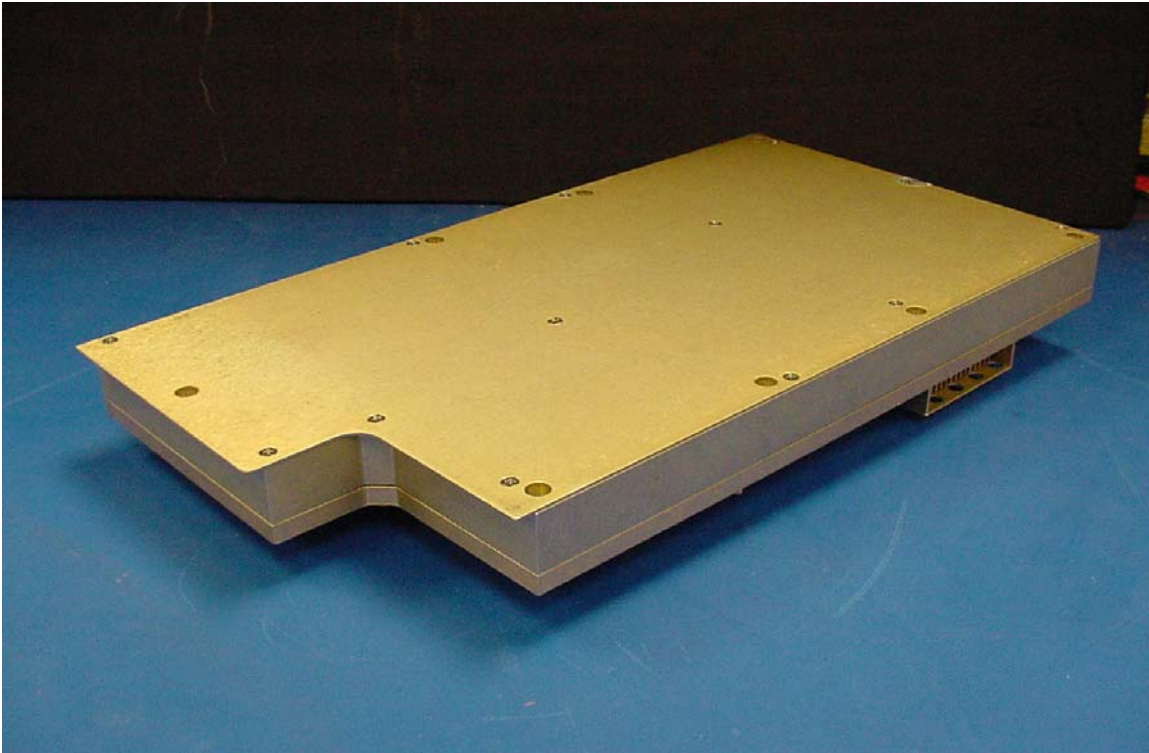


View of Inside of Front Plate

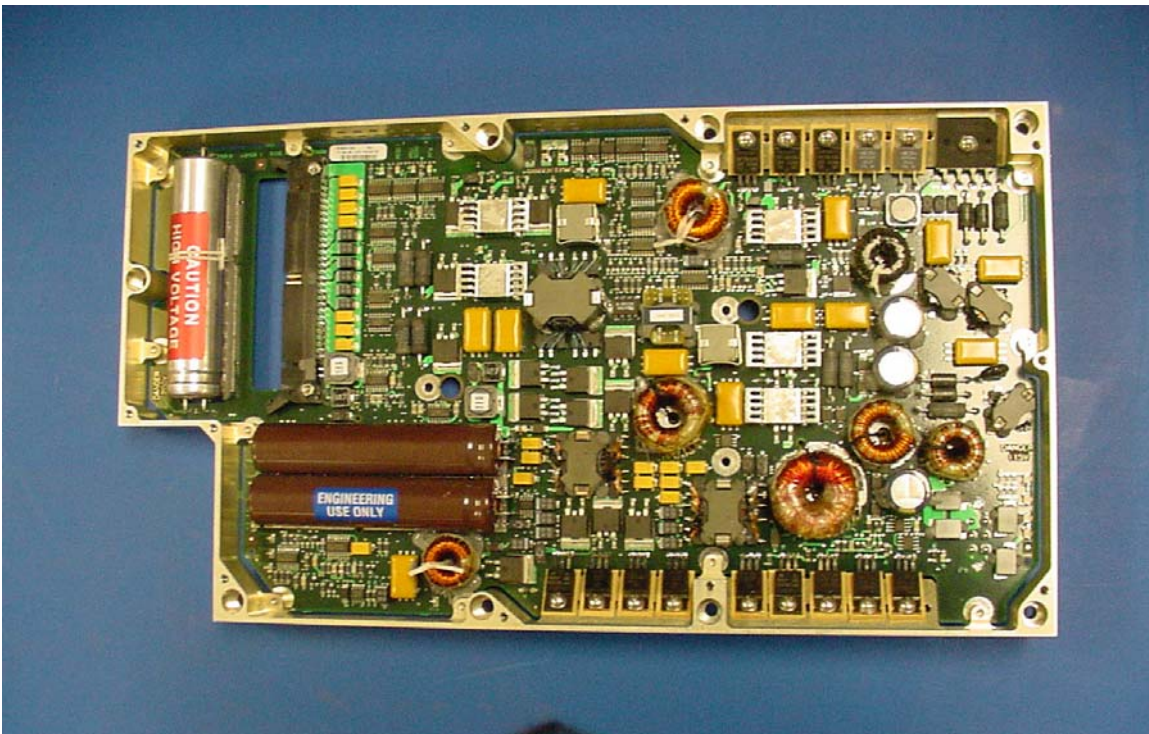


SD-720 Internal Photos

Power Supply Module – Located on right side (relative to front view) of SD-720

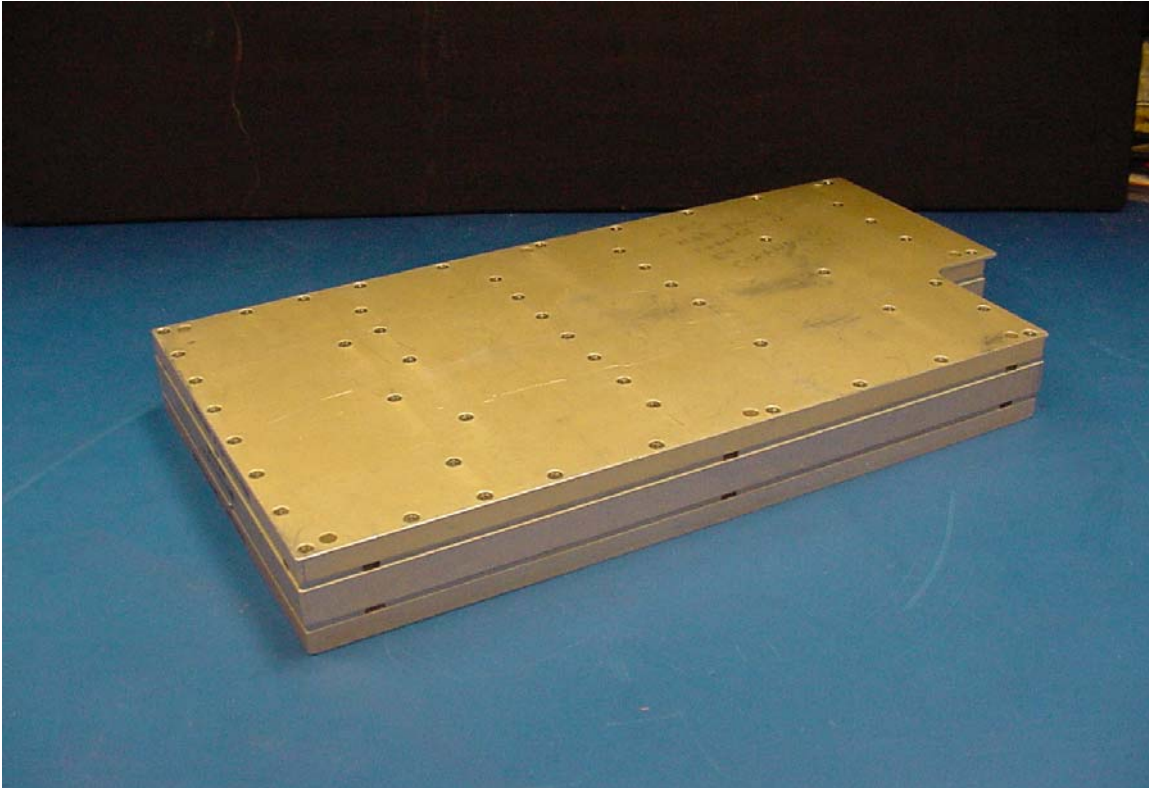


Power Supply Circuit Card Assembly

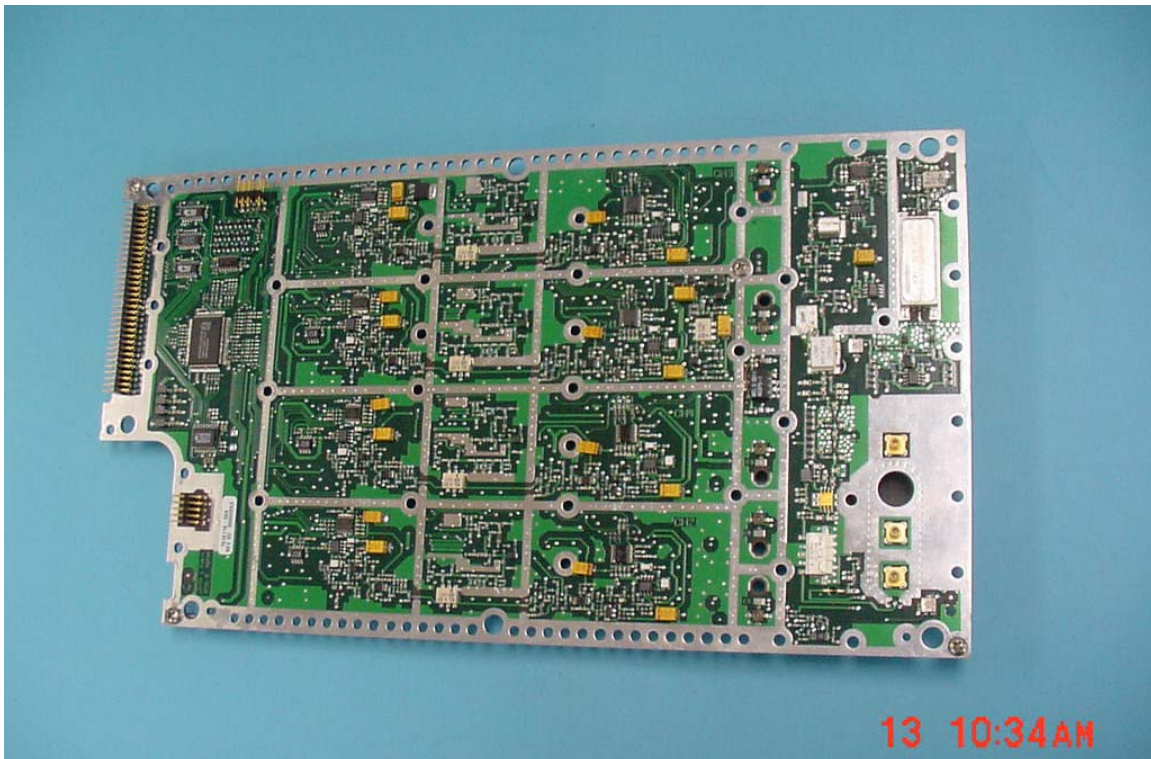


SD-720 Internal Photos

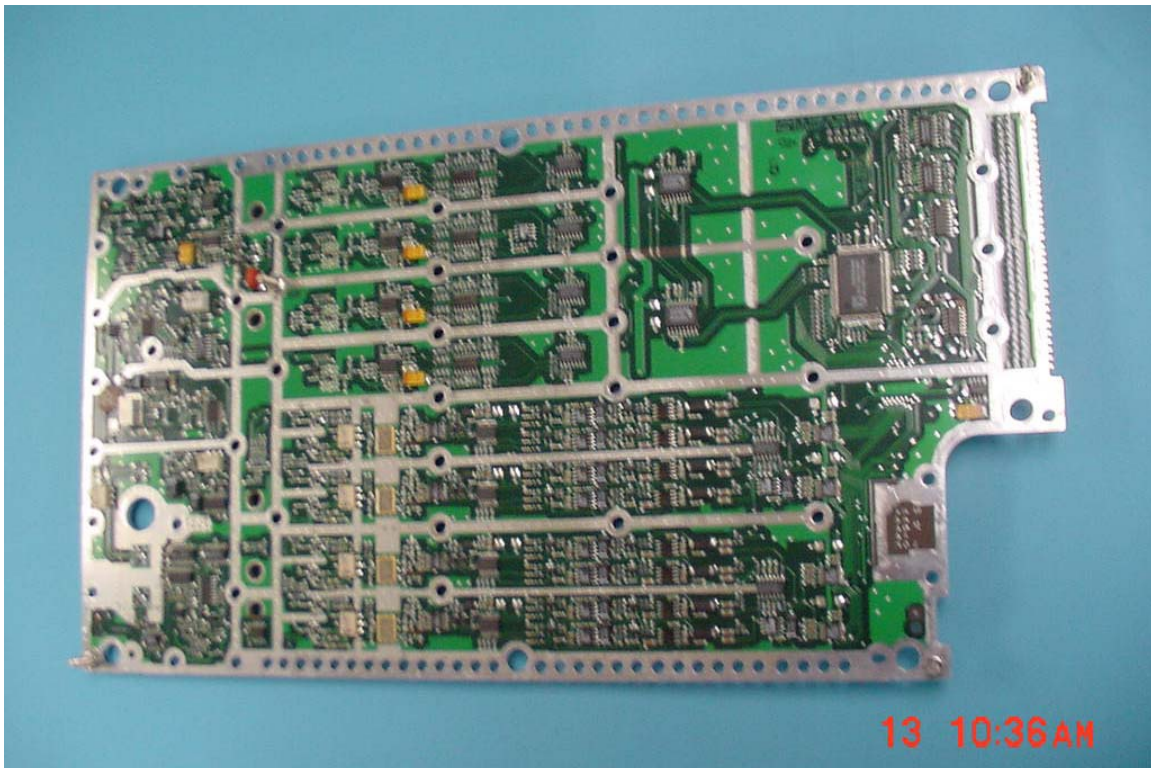
RF Module (RFM) – Located on left side (relative to front view) of SD-720



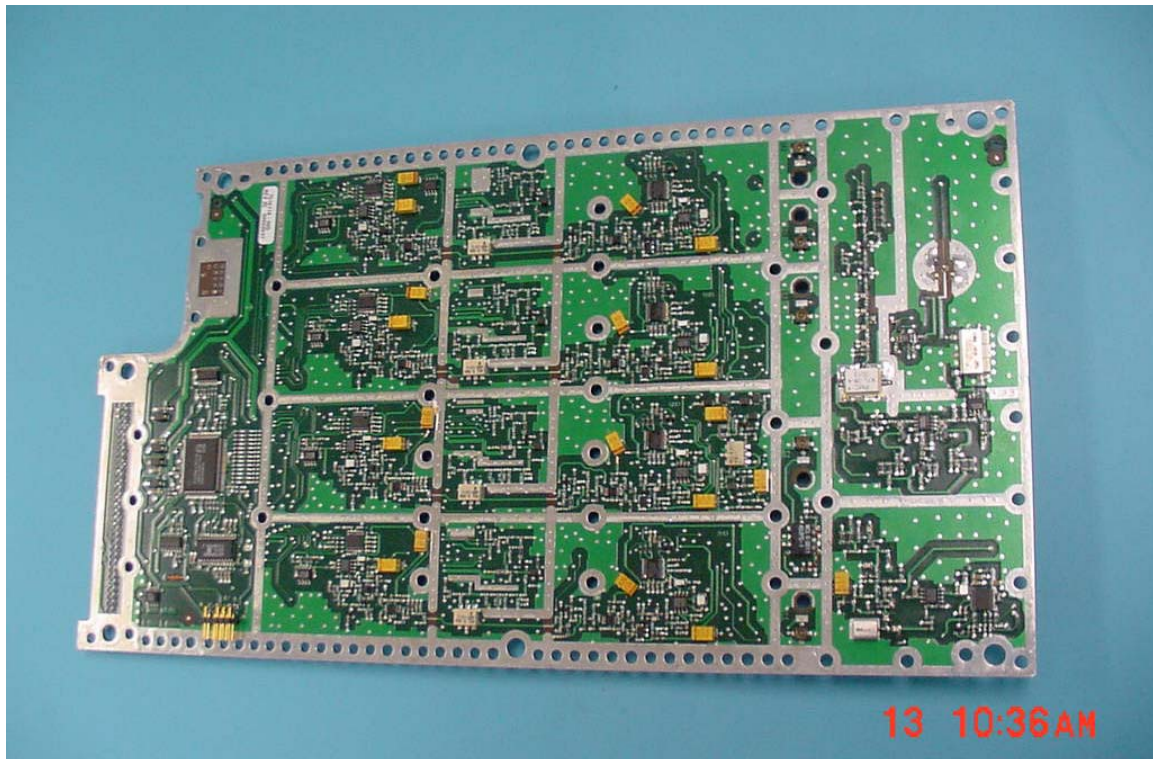
RFM Tx Card – Side 1



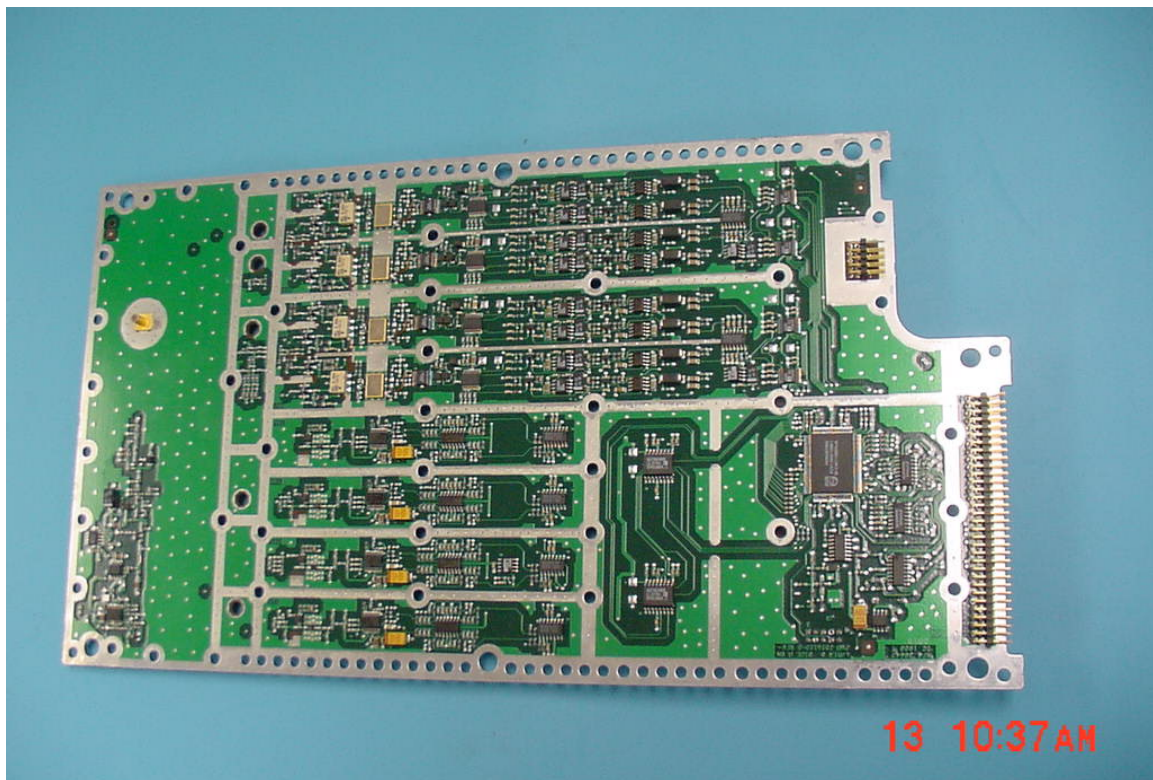
RFM Tx Card – Side 2



RFM Rx Card – Side 1

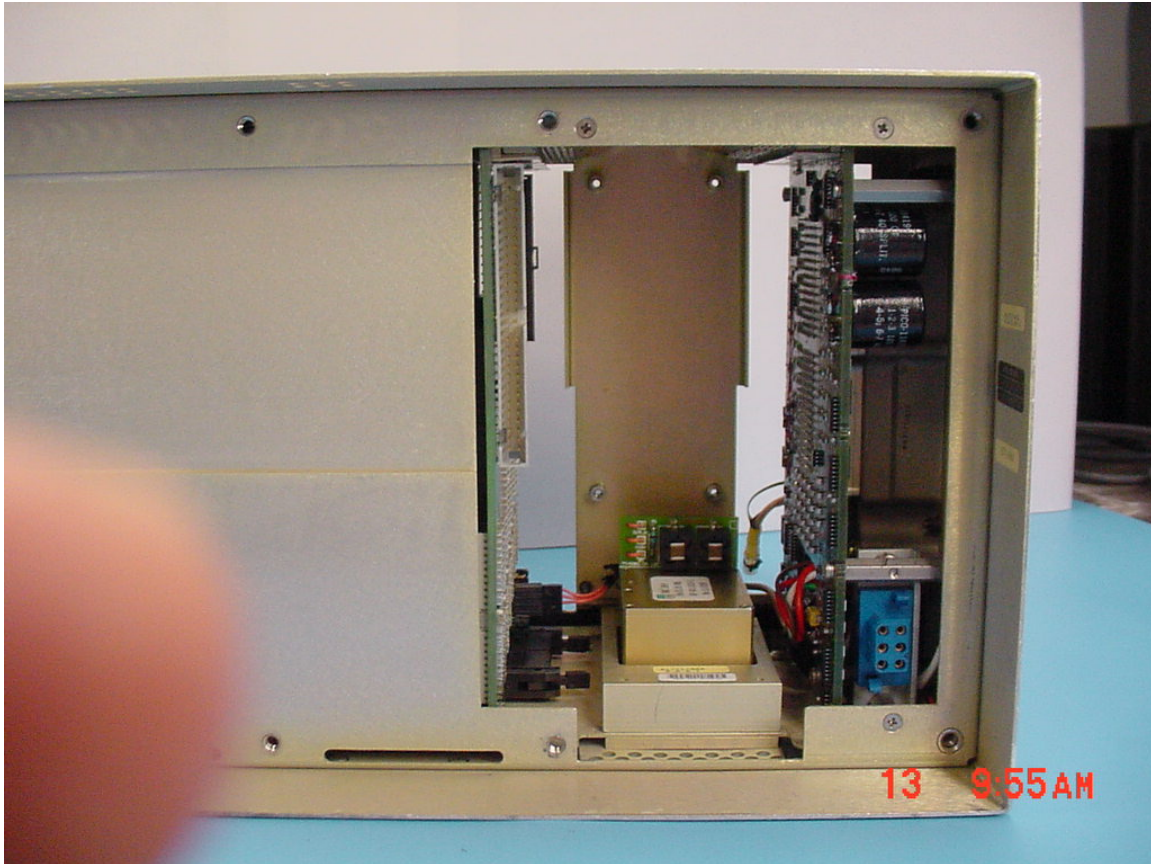


RFM Rx Card – Side 2



SD-720 Internal Photos

Looking into right side of SD-720 with PSU removed – view 1



Visible are:

OCXO (center)
Mother Board (left)
Interface Module (right)

Looking into right side of SD-720 with PSU removed – view 2

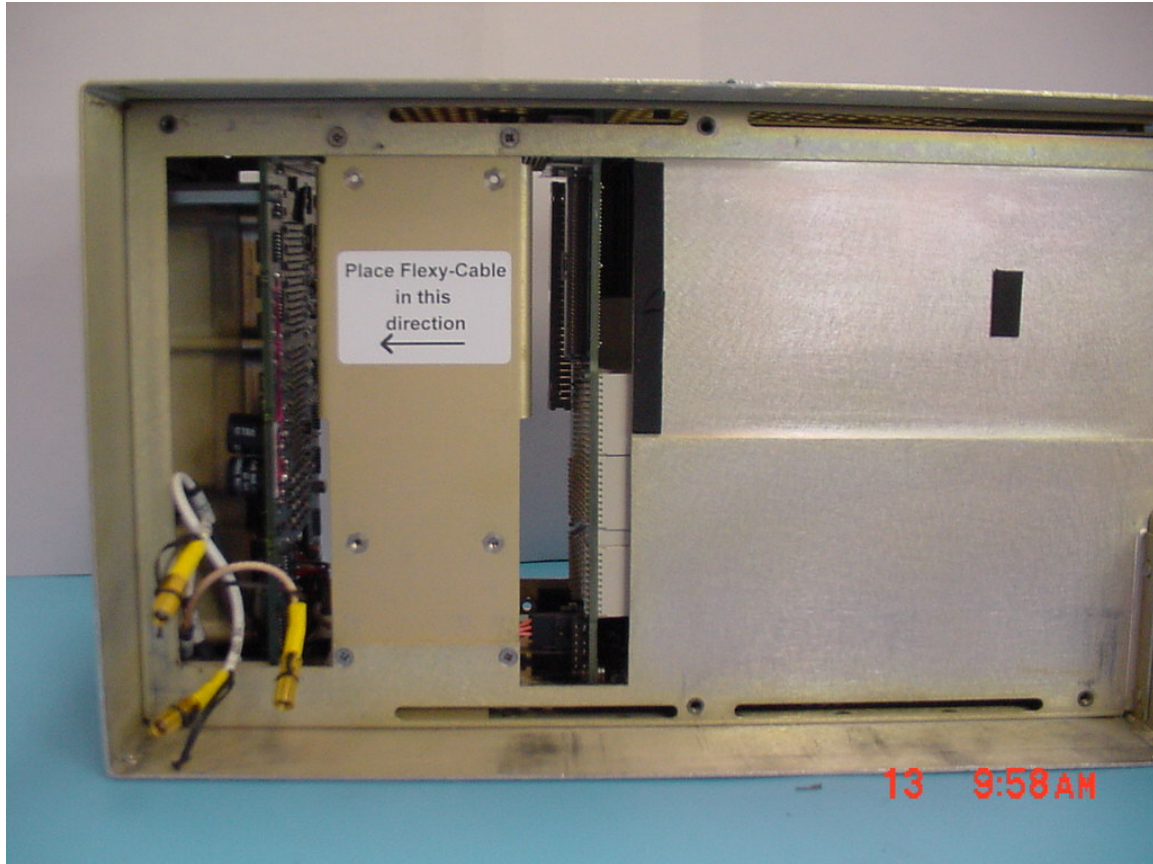


Visible are:

OCXO (center)
Mother Board (left)
Interface Module (right)

SD-720 Internal Photos

Looking into left side of SD-720 with RFM removed

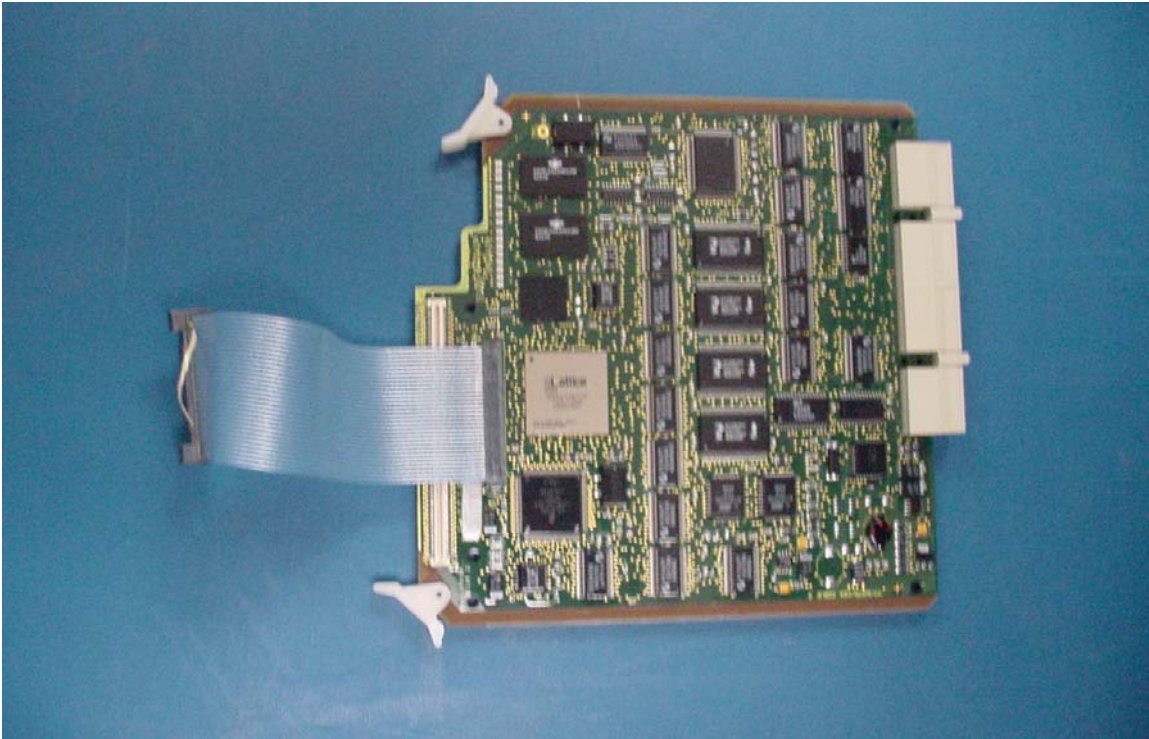


Visible are:

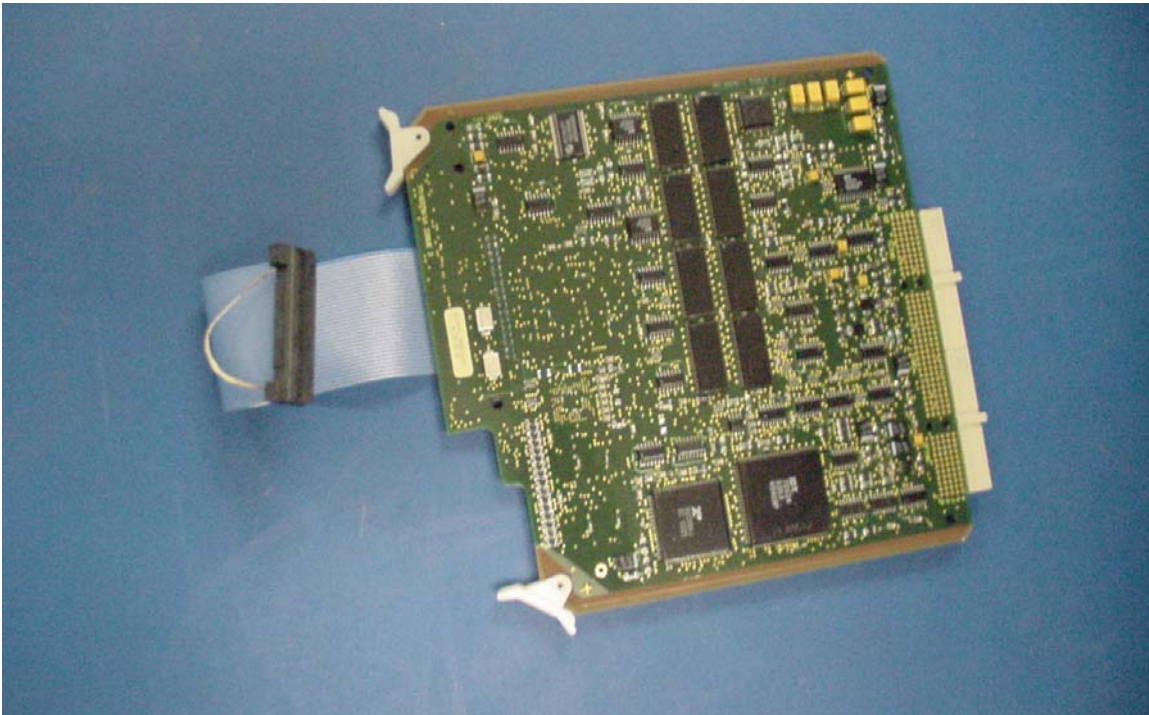
Mother Board (right)
Interface Module (left)

SD-720 Internal Photos

SD-720 Main Processor Module (MPM) – Side 1

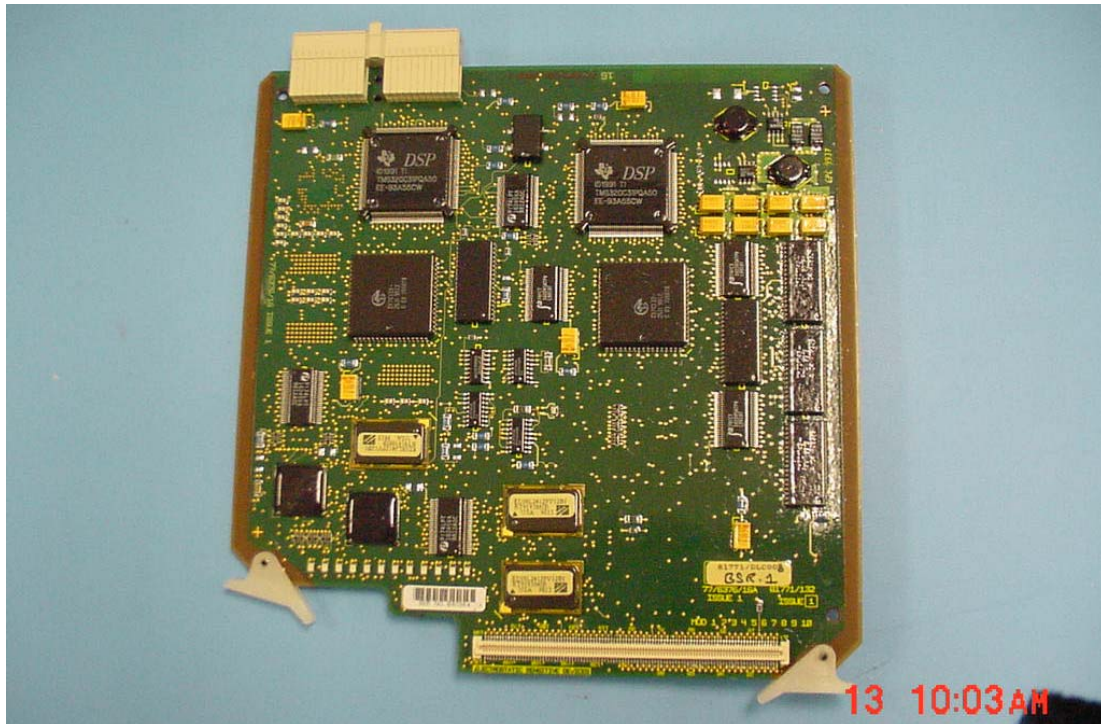


SD-720 Main Processor Module (MPM) – Side 2

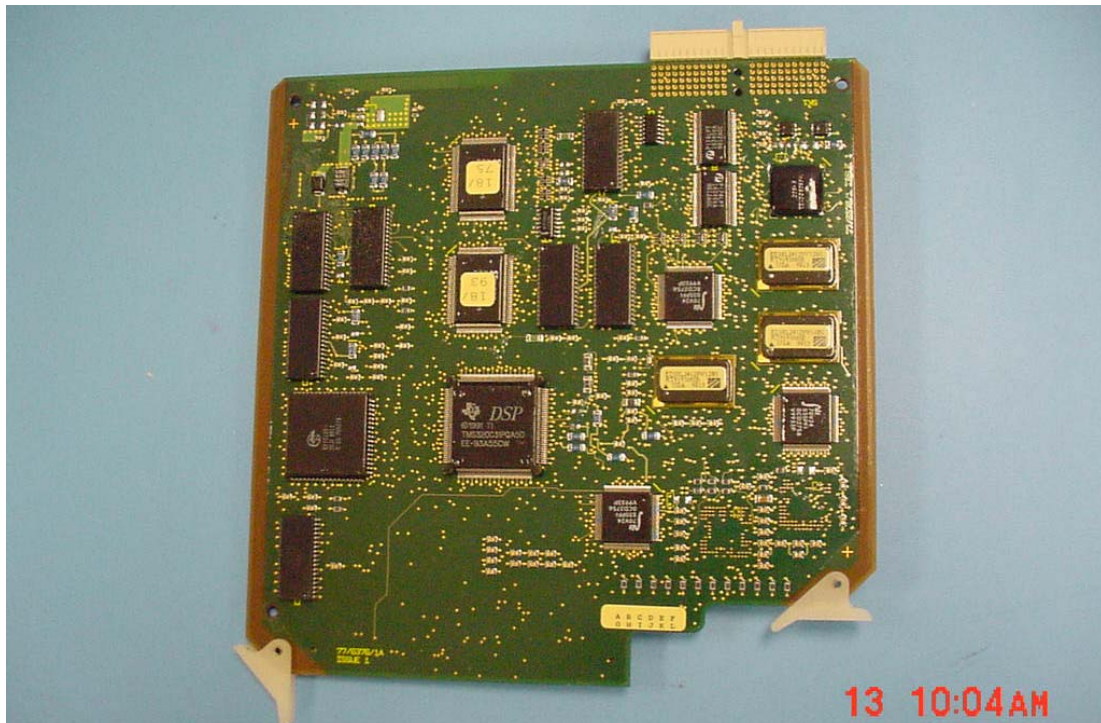


SD-720 Internal Photos

SD-720 Triple Transcoder Module (TTCM) – Side 1

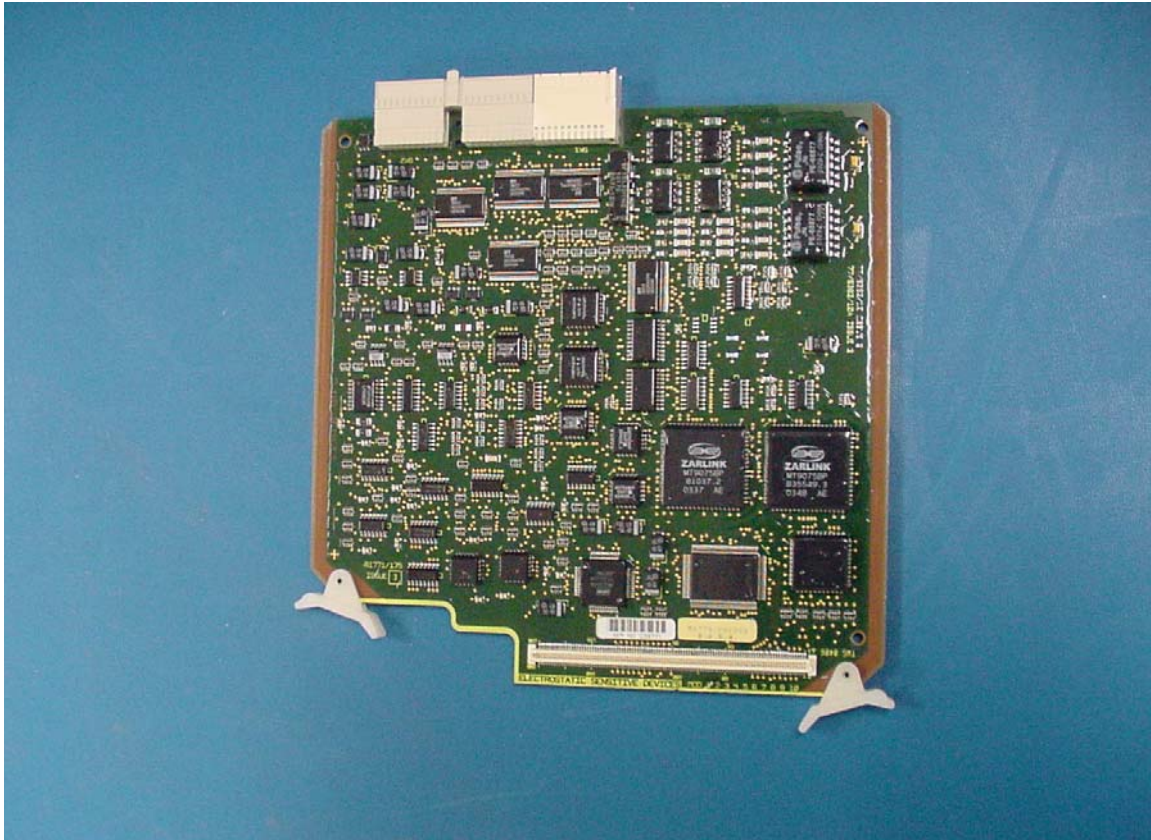


SD-720 Triple Transcoder Module (TTCM) – Side 2



SD-720 Internal Photos

SD-720 Voice Interface Module (VIM)



SD-720 Internal Photos

SD-720 Input/Output Module (IOM)

