

List of Figures

Figure 1: 1252-A-2001 Control Processor Top	2
Figure 2: 1252-A-2001 Control Processor Bottom.....	3
Figure 3: 1210-A-0010-02 BGAN Channel Card Top	4
Figure 4: 1210-A-0010-02 BGAN Channel Card Inside.....	5
Figure 5: 1210-A-0010-02 BGAN Channel Card Bottom.....	6
Figure 6: 1210-A-0003 RF Modules Bottom	7
Figure 7: 1110-F-0017 OXCO Top	8
Figure 8: 1110-F-0017 OXCO Bottom.....	9
Figure 9: 1252-F-0017 2 splitters and 10MHz OCXO Installed	10
Figure 10: 1252-F-0124 Power Supply.....	11
Figure 11: 1252-A-2007 RF Combiner/Splitter Top	12
Figure 12: 1252-A-2007_1252-U-2008 TX Combiner CCA (Part of RF Combiner/Splitter)	13
Figure 13: 1252-A-2007 RF Combiner/Splitter Bottom.....	14
Figure 14: Interconnections	15

**CONFIDENTIAL, UNPUBLISHED PROPERTY OF ONE OR MORE OF THE FOLLOWING - EMS TECHNOLOGIES CANADA, LTD.,
FORMATION INC., SKY CONNECT LLC (COLLECTIVELY “EMS AVIATION”).**

USE AND DISTRIBUTION LIMITED SOLELY TO AUTHORIZED PERSONNEL

The use, disclosure, reproduction, modification, transfer or transmittal of this work for any purpose, in any form, or by any means without the prior written permission of EMS Aviation is strictly prohibited. This document does not contain technical data as defined in the International Traffic and Arms Regulations (ITAR) 22 CFR 120-130.

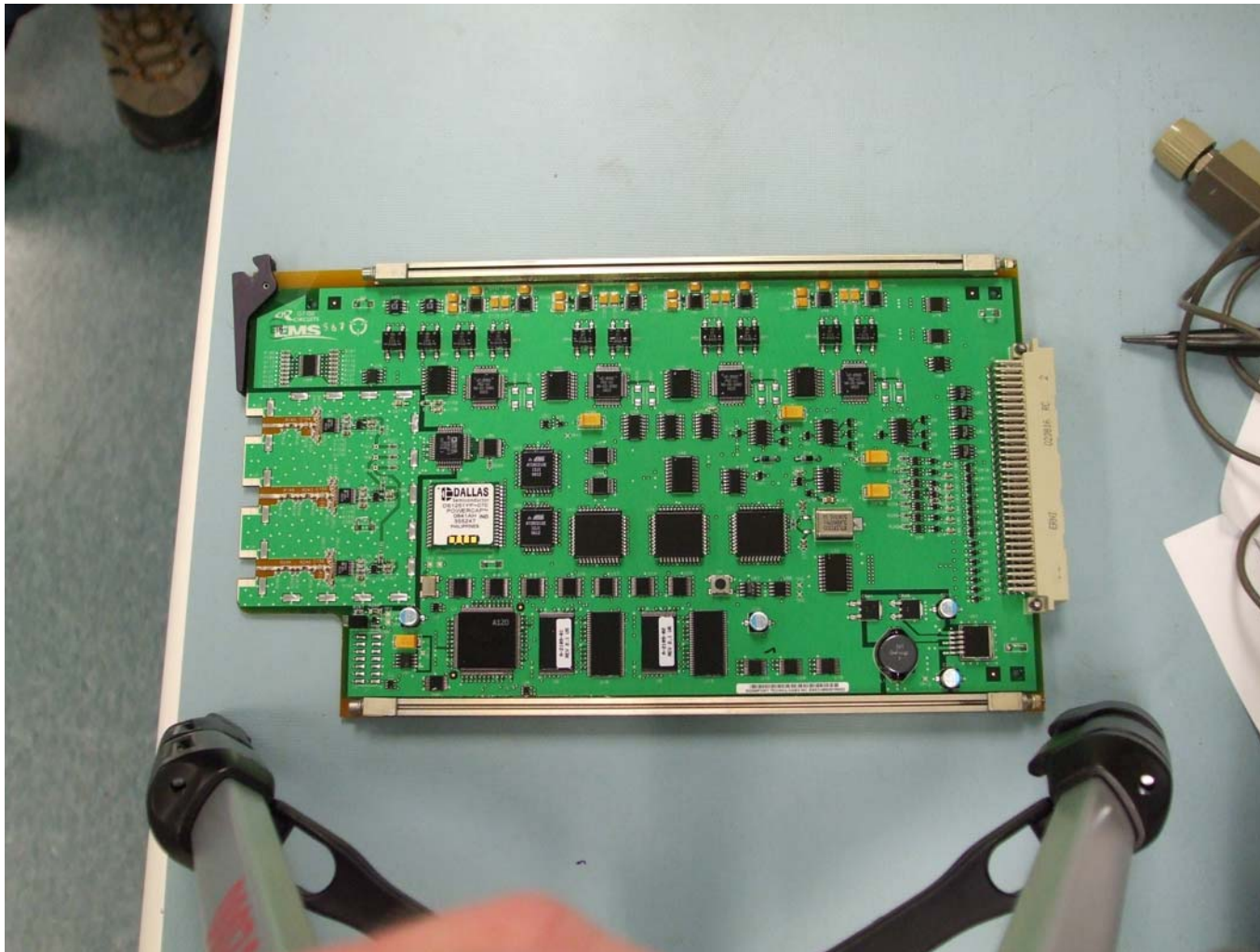


Figure 1: 1252-A-2001 Control Processor Top

CONFIDENTIAL, UNPUBLISHED PROPERTY OF ONE OR MORE OF THE FOLLOWING - EMS TECHNOLOGIES CANADA, LTD., FORMATION INC., SKY CONNECT LLC (COLLECTIVELY "EMS AVIATION").

USE AND DISTRIBUTION LIMITED SOLELY TO AUTHORIZED PERSONNEL

The use, disclosure, reproduction, modification, transfer or transmittal of this work for any purpose, in any form, or by any means without the prior written permission of EMS Aviation is strictly prohibited. This document does not contain technical data as defined in the International Traffic and Arms Regulations (ITAR) 22 CFR 120-130.



Figure 2: 1252-A-2001 Control Processor Bottom

CONFIDENTIAL, UNPUBLISHED PROPERTY OF ONE OR MORE OF THE FOLLOWING - EMS TECHNOLOGIES CANADA, LTD., FORMATION INC., SKY CONNECT LLC (COLLECTIVELY "EMS AVIATION").

USE AND DISTRIBUTION LIMITED SOLELY TO AUTHORIZED PERSONNEL

The use, disclosure, reproduction, modification, transfer or transmittal of this work for any purpose, in any form, or by any means without the prior written permission of EMS Aviation is strictly prohibited. This document does not contain technical data as defined in the International Traffic and Arms Regulations (ITAR) 22 CFR 120-130.

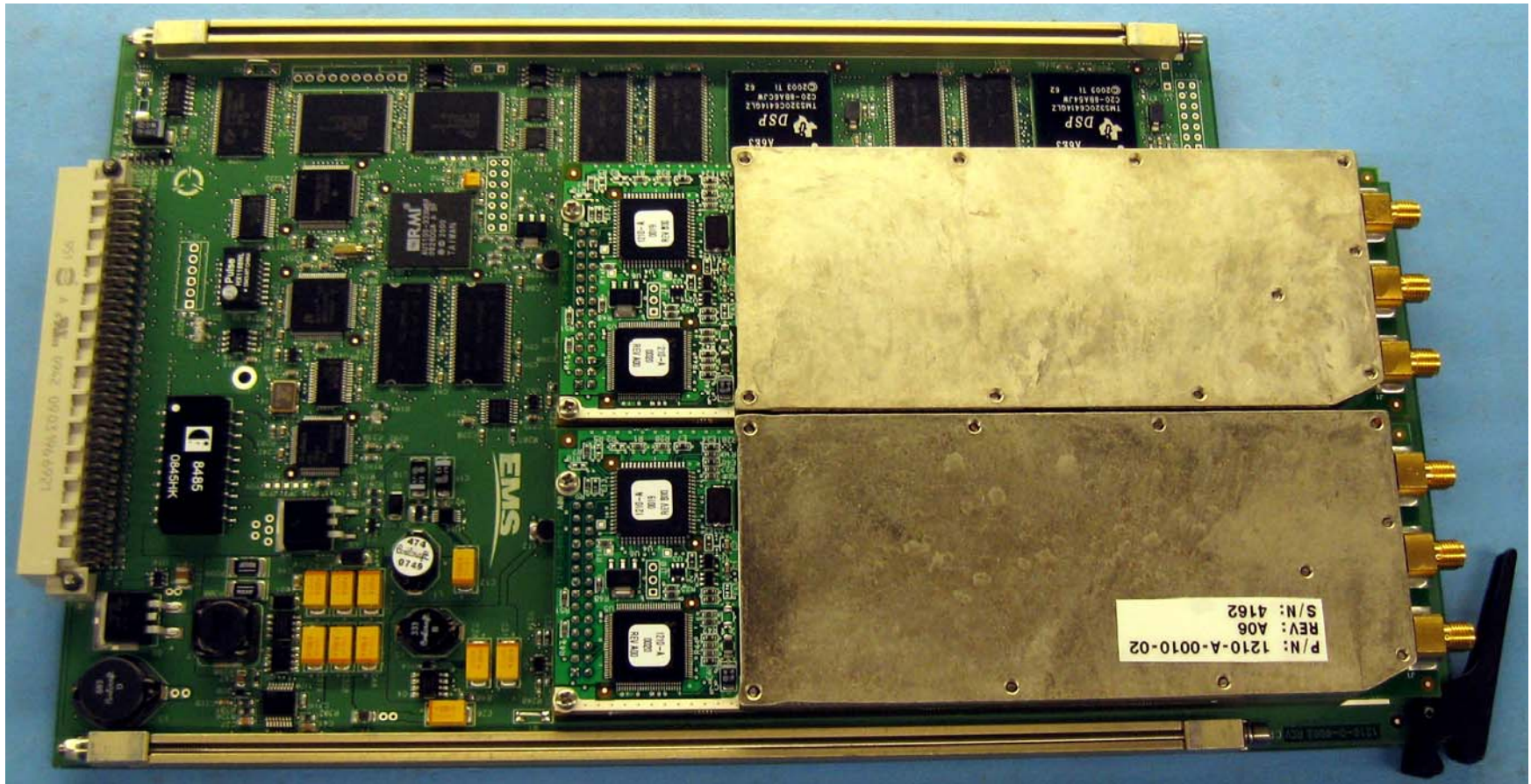


Figure 3: 1210-A-0010-02 BGAN Channel Card Top

CONFIDENTIAL, UNPUBLISHED PROPERTY OF ONE OR MORE OF THE FOLLOWING - EMS TECHNOLOGIES CANADA, LTD., FORMATION INC., SKY CONNECT LLC (COLLECTIVELY "EMS AVIATION").

USE AND DISTRIBUTION LIMITED SOLELY TO AUTHORIZED PERSONNEL

The use, disclosure, reproduction, modification, transfer or transmittal of this work for any purpose, in any form, or by any means without the prior written permission of EMS Aviation is strictly prohibited. This document does not contain technical data as defined in the International Traffic and Arms Regulations (ITAR) 22 CFR 120-130.

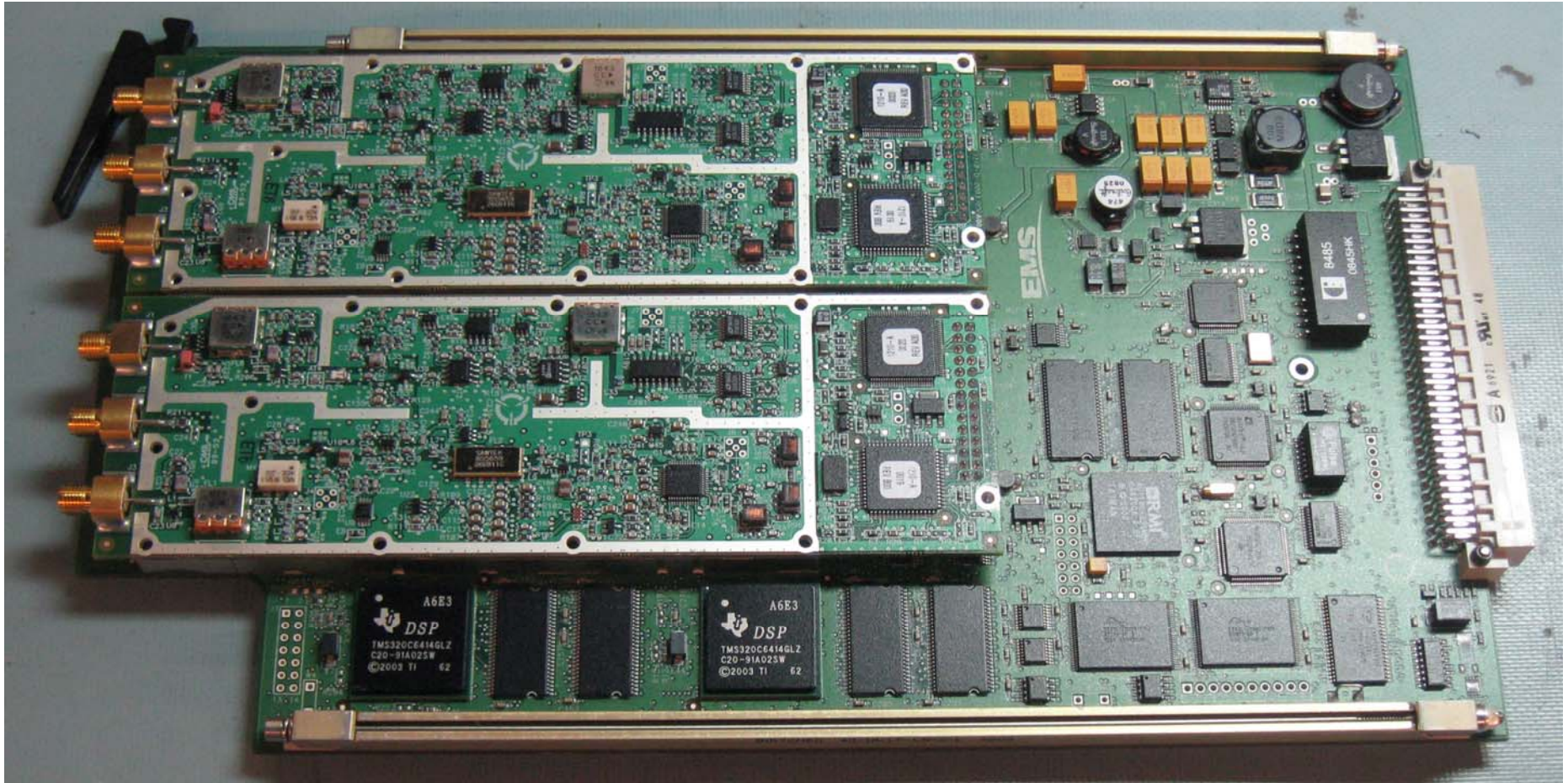


Figure 4: 1210-A-0010-02 BGAN Channel Card Inside

CONFIDENTIAL, UNPUBLISHED PROPERTY OF ONE OR MORE OF THE FOLLOWING - EMS TECHNOLOGIES CANADA, LTD., FORMATION INC., SKY CONNECT LLC (COLLECTIVELY "EMS AVIATION").

USE AND DISTRIBUTION LIMITED SOLELY TO AUTHORIZED PERSONNEL

The use, disclosure, reproduction, modification, transfer or transmittal of this work for any purpose, in any form, or by any means without the prior written permission of EMS Aviation is strictly prohibited. This document does not contain technical data as defined in the International Traffic and Arms Regulations (ITAR) 22 CFR 120-130.

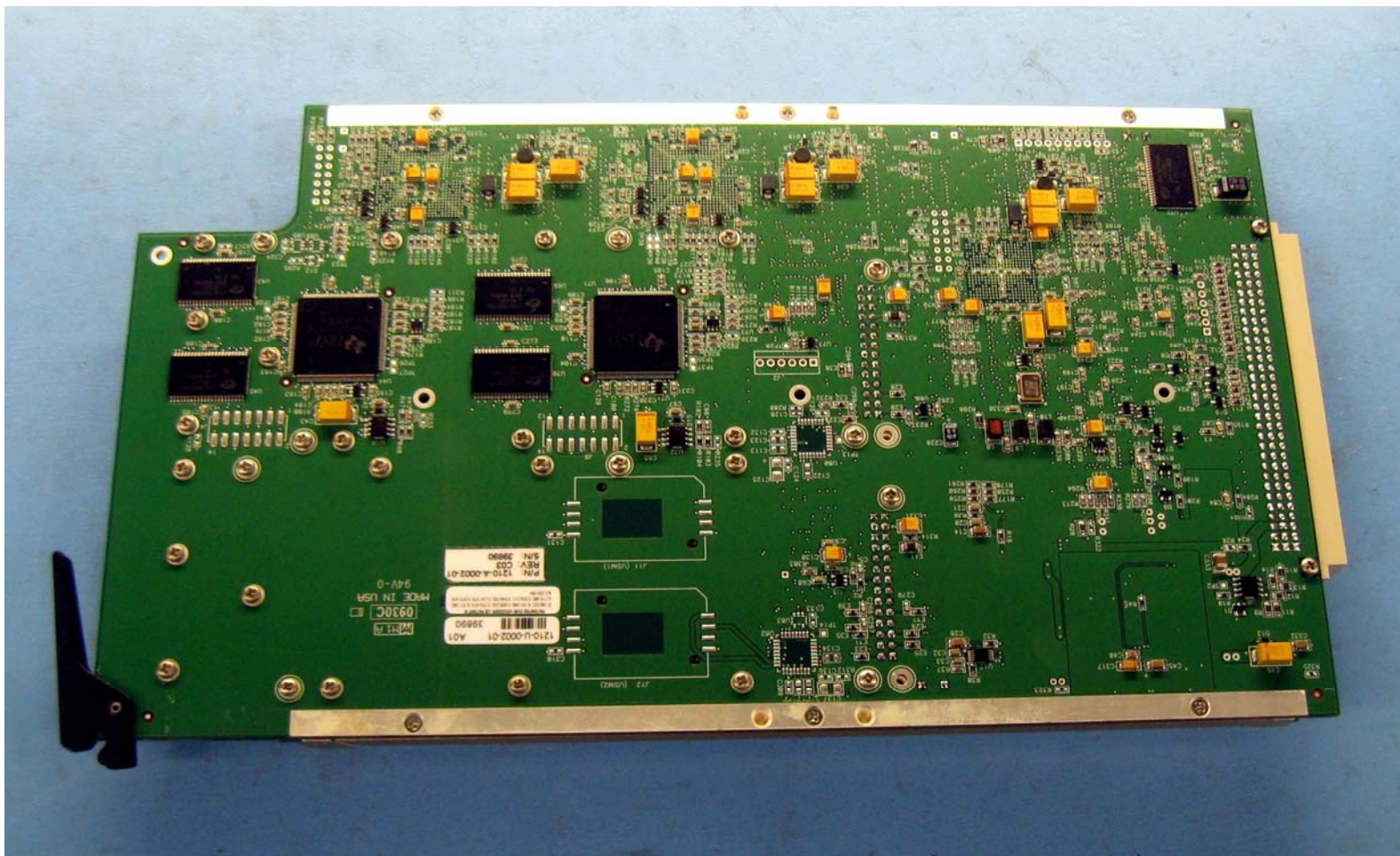


Figure 5: 1210-A-0010-02 BGAN Channel Card Bottom

CONFIDENTIAL, UNPUBLISHED PROPERTY OF ONE OR MORE OF THE FOLLOWING - EMS TECHNOLOGIES CANADA, LTD., FORMATION INC., SKY CONNECT LLC (COLLECTIVELY "EMS AVIATION").

USE AND DISTRIBUTION LIMITED SOLELY TO AUTHORIZED PERSONNEL

The use, disclosure, reproduction, modification, transfer or transmittal of this work for any purpose, in any form, or by any means without the prior written permission of EMS Aviation is strictly prohibited. This document does not contain technical data as defined in the International Traffic and Arms Regulations (ITAR) 22 CFR 120-130.

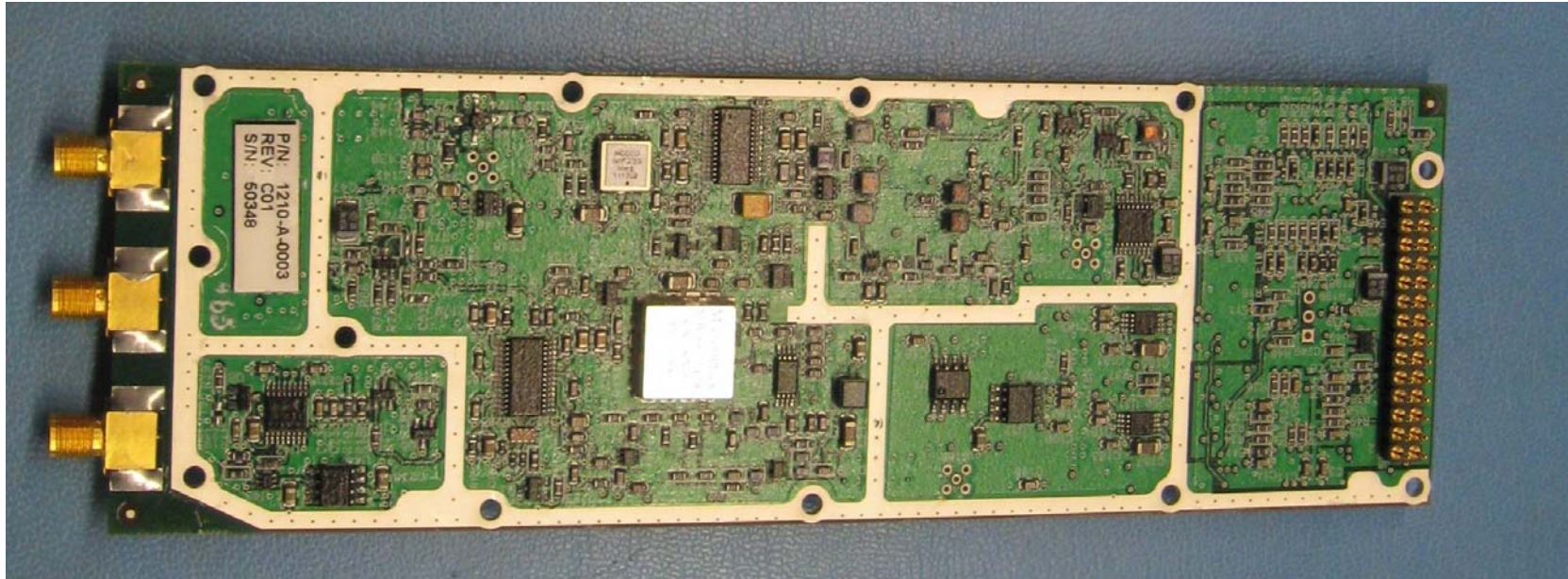


Figure 6: 1210-A-0003 RF Modules Bottom

**CONFIDENTIAL, UNPUBLISHED PROPERTY OF ONE OR MORE OF THE FOLLOWING - EMS TECHNOLOGIES CANADA, LTD.,
FORMATION INC., SKY CONNECT LLC (COLLECTIVELY "EMS AVIATION").**

USE AND DISTRIBUTION LIMITED SOLELY TO AUTHORIZED PERSONNEL

The use, disclosure, reproduction, modification, transfer or transmittal of this work for any purpose, in any form, or by any means without the prior written permission of EMS Aviation is strictly prohibited. This document does not contain technical data as defined in the International Traffic and Arms Regulations (ITAR) 22 CFR 120-130.

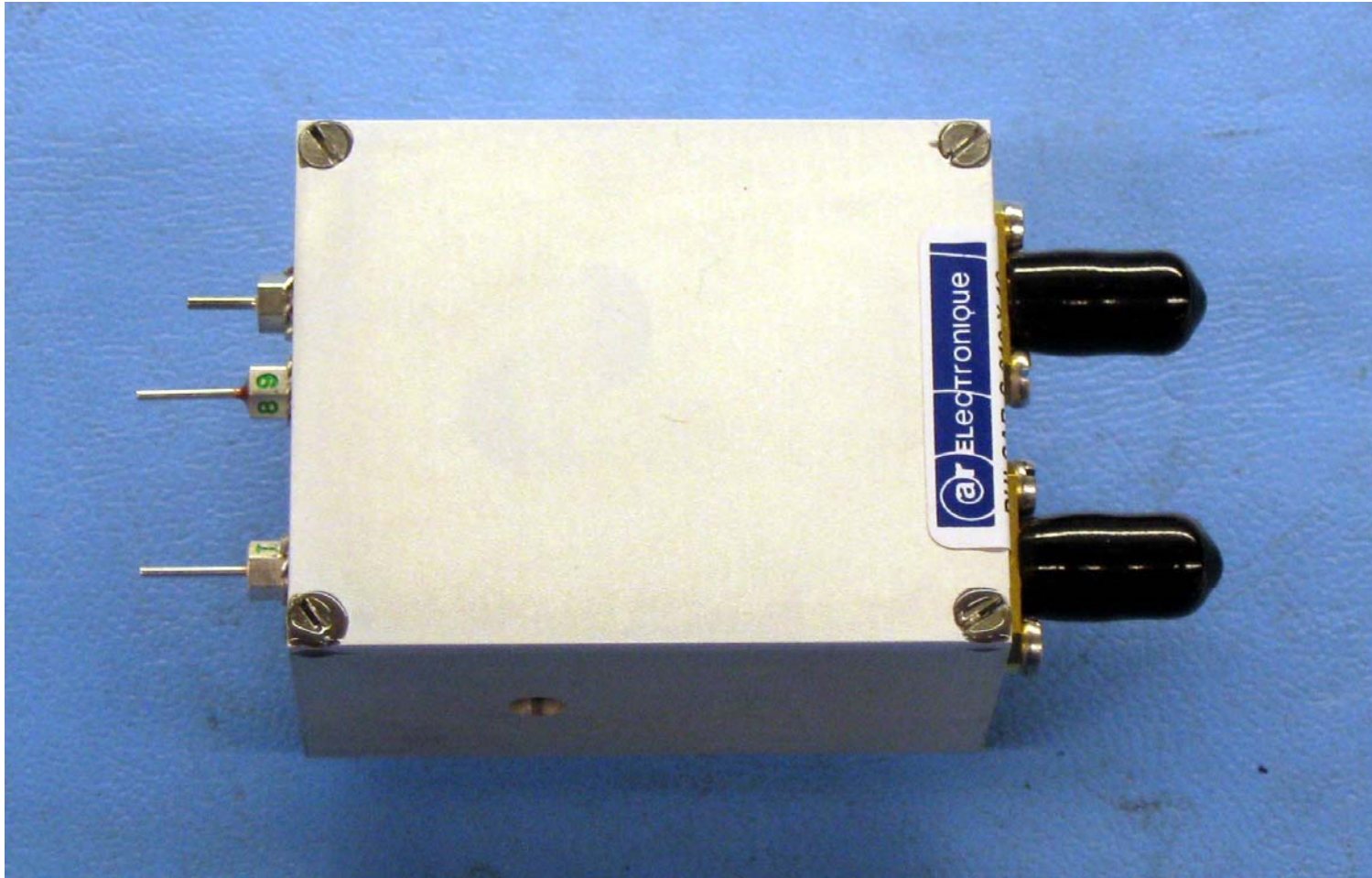


Figure 7: 1110-F-0017 OXCO Top

**CONFIDENTIAL, UNPUBLISHED PROPERTY OF ONE OR MORE OF THE FOLLOWING - EMS TECHNOLOGIES CANADA, LTD.,
FORMATION INC., SKY CONNECT LLC (COLLECTIVELY "EMS AVIATION").**

USE AND DISTRIBUTION LIMITED SOLELY TO AUTHORIZED PERSONNEL

The use, disclosure, reproduction, modification, transfer or transmittal of this work for any purpose, in any form, or by any means without the prior written permission of EMS Aviation is strictly prohibited. This document does not contain technical data as defined in the International Traffic and Arms Regulations (ITAR) 22 CFR 120-130.

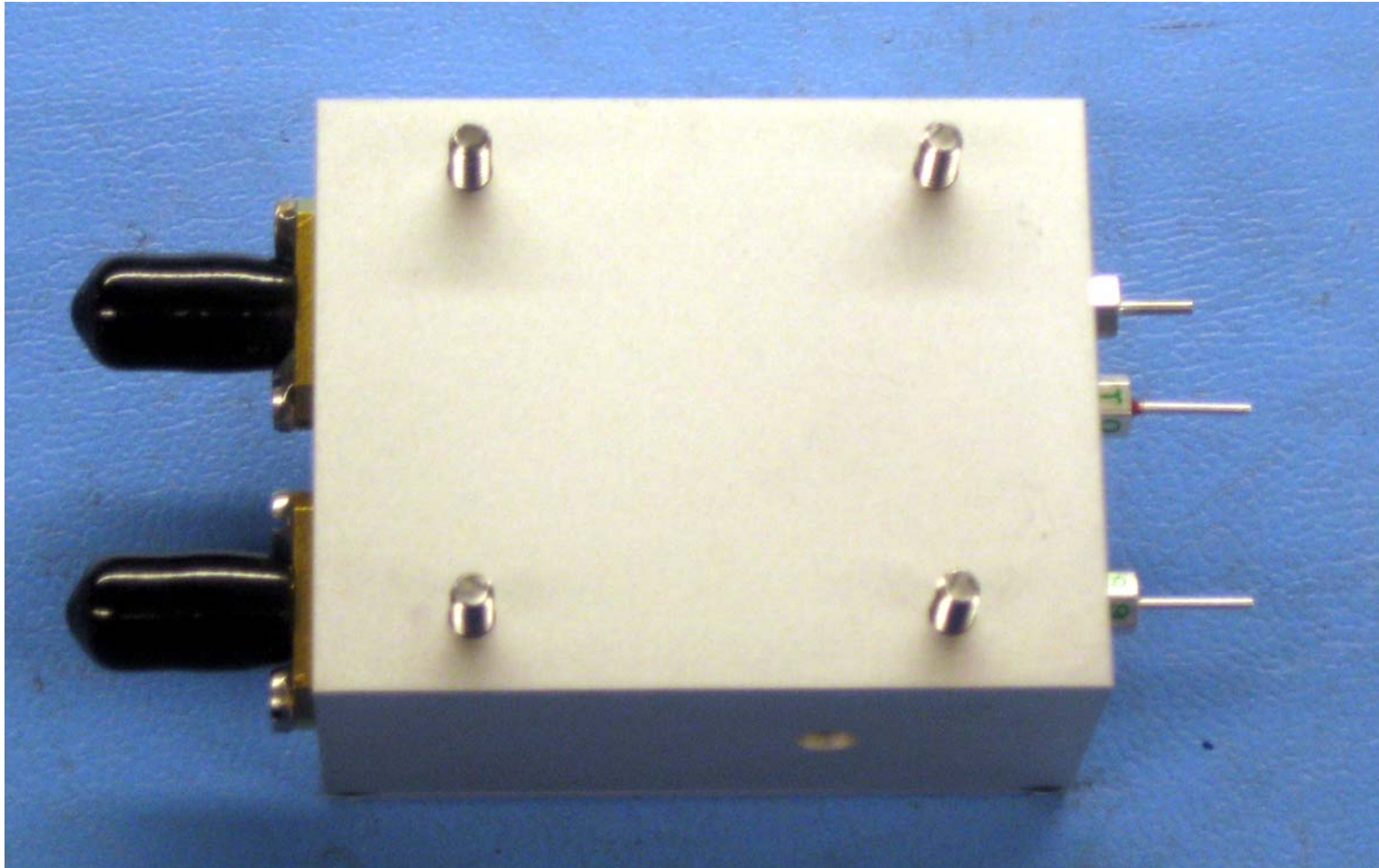


Figure 8: 1110-F-0017 OXCO Bottom

**CONFIDENTIAL, UNPUBLISHED PROPERTY OF ONE OR MORE OF THE FOLLOWING - EMS TECHNOLOGIES CANADA, LTD.,
FORMATION INC., SKY CONNECT LLC (COLLECTIVELY "EMS AVIATION").**

USE AND DISTRIBUTION LIMITED SOLELY TO AUTHORIZED PERSONNEL

The use, disclosure, reproduction, modification, transfer or transmittal of this work for any purpose, in any form, or by any means without the prior written permission of EMS Aviation is strictly prohibited. This document does not contain technical data as defined in the International Traffic and Arms Regulations (ITAR) 22 CFR 120-130.



Figure 9: 1252-F-0017 2 splitters and 10MHz OCXO Installed

CONFIDENTIAL, UNPUBLISHED PROPERTY OF ONE OR MORE OF THE FOLLOWING - EMS TECHNOLOGIES CANADA, LTD., FORMATION INC., SKY CONNECT LLC (COLLECTIVELY "EMS AVIATION").

USE AND DISTRIBUTION LIMITED SOLELY TO AUTHORIZED PERSONNEL

The use, disclosure, reproduction, modification, transfer or transmittal of this work for any purpose, in any form, or by any means without the prior written permission of EMS Aviation is strictly prohibited. This document does not contain technical data as defined in the International Traffic and Arms Regulations (ITAR) 22 CFR 120-130.



Figure 10: 1252-F-0124 Power Supply

CONFIDENTIAL, UNPUBLISHED PROPERTY OF ONE OR MORE OF THE FOLLOWING - EMS TECHNOLOGIES CANADA, LTD., FORMATION INC., SKY CONNECT LLC (COLLECTIVELY "EMS AVIATION").

USE AND DISTRIBUTION LIMITED SOLELY TO AUTHORIZED PERSONNEL

The use, disclosure, reproduction, modification, transfer or transmittal of this work for any purpose, in any form, or by any means without the prior written permission of EMS Aviation is strictly prohibited. This document does not contain technical data as defined in the International Traffic and Arms Regulations (ITAR) 22 CFR 120-130.



Figure 11: 1252-A-2007 RF Combiner/Splitter Top

**CONFIDENTIAL, UNPUBLISHED PROPERTY OF ONE OR MORE OF THE FOLLOWING - EMS TECHNOLOGIES CANADA, LTD.,
FORMATION INC., SKY CONNECT LLC (COLLECTIVELY "EMS AVIATION").**

USE AND DISTRIBUTION LIMITED SOLELY TO AUTHORIZED PERSONNEL

The use, disclosure, reproduction, modification, transfer or transmittal of this work for any purpose, in any form, or by any means without the prior written permission of EMS Aviation is strictly prohibited. This document does not contain technical data as defined in the International Traffic and Arms Regulations (ITAR) 22 CFR 120-130.

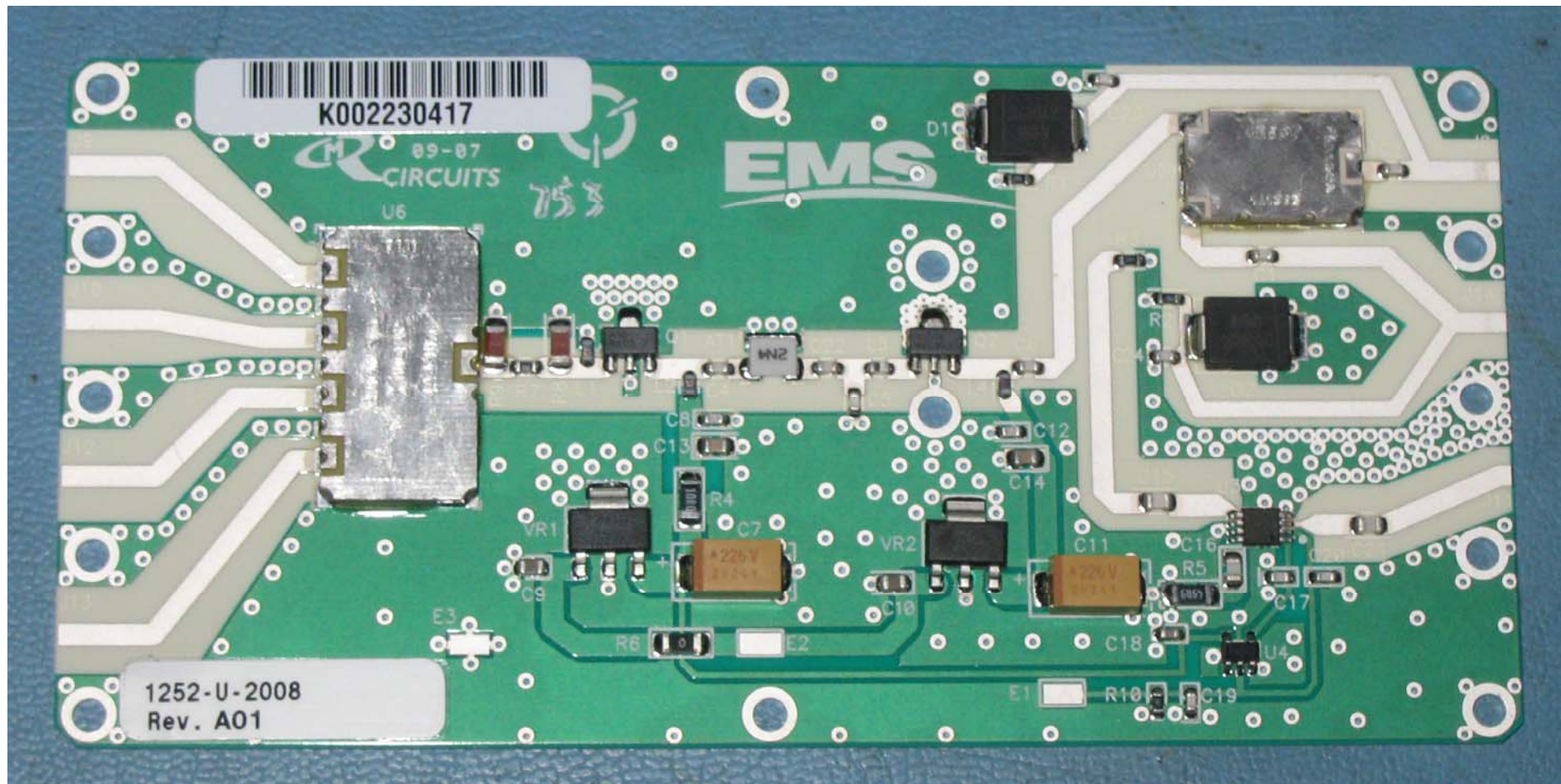


Figure 12: 1252-A-2007_1252-U-2008 TX Combiner CCA (Part of RF Combiner/Splitter)

**CONFIDENTIAL, UNPUBLISHED PROPERTY OF ONE OR MORE OF THE FOLLOWING - EMS TECHNOLOGIES CANADA, LTD.,
FORMATION INC., SKY CONNECT LLC (COLLECTIVELY "EMS AVIATION").**

USE AND DISTRIBUTION LIMITED SOLELY TO AUTHORIZED PERSONNEL

The use, disclosure, reproduction, modification, transfer or transmittal of this work for any purpose, in any form, or by any means without the prior written permission of EMS Aviation is strictly prohibited. This document does not contain technical data as defined in the International Traffic and Arms Regulations (ITAR) 22 CFR 120-130.

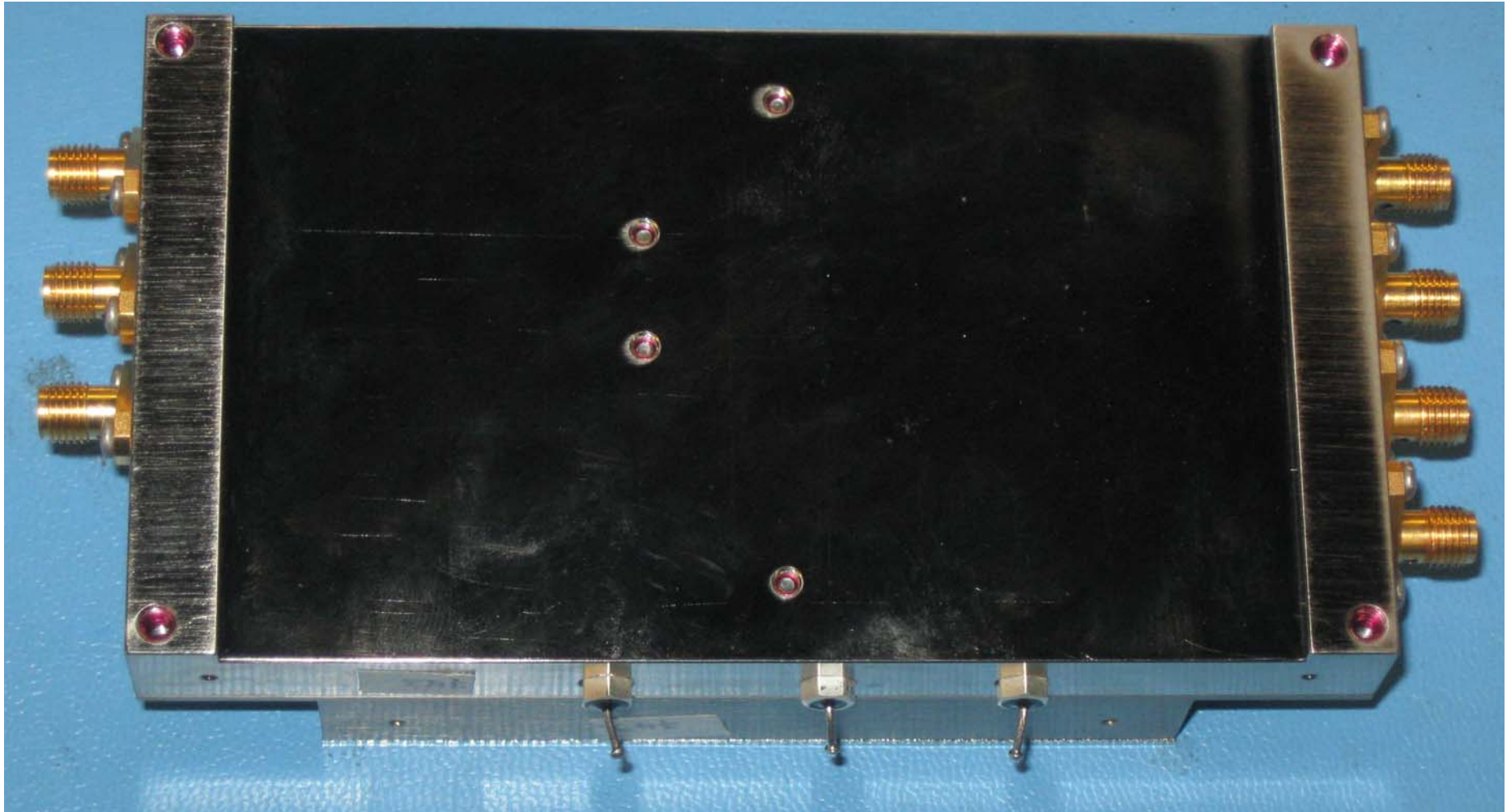


Figure 13: 1252-A-2007 RF Combiner/Splitter Bottom

**CONFIDENTIAL, UNPUBLISHED PROPERTY OF ONE OR MORE OF THE FOLLOWING - EMS TECHNOLOGIES CANADA, LTD.,
FORMATION INC., SKY CONNECT LLC (COLLECTIVELY "EMS AVIATION").**

USE AND DISTRIBUTION LIMITED SOLELY TO AUTHORIZED PERSONNEL

The use, disclosure, reproduction, modification, transfer or transmittal of this work for any purpose, in any form, or by any means without the prior written permission of EMS Aviation is strictly prohibited. This document does not contain technical data as defined in the International Traffic and Arms Regulations (ITAR) 22 CFR 120-130.

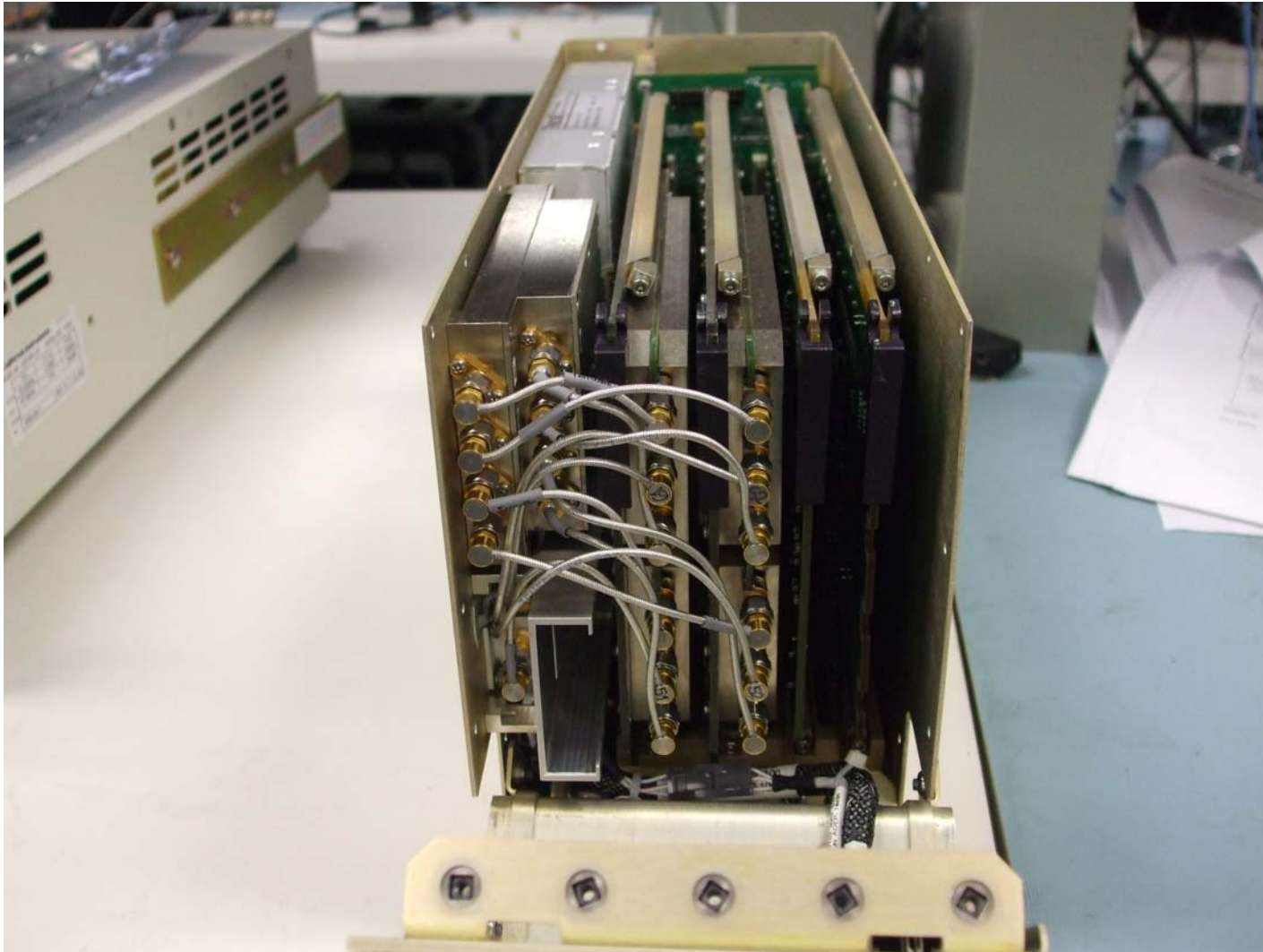


Figure 14: Interconnections

**CONFIDENTIAL, UNPUBLISHED PROPERTY OF ONE OR MORE OF THE FOLLOWING - EMS TECHNOLOGIES CANADA, LTD.,
FORMATION INC., SKY CONNECT LLC (COLLECTIVELY "EMS AVIATION").**

USE AND DISTRIBUTION LIMITED SOLELY TO AUTHORIZED PERSONNEL

The use, disclosure, reproduction, modification, transfer or transmittal of this work for any purpose, in any form, or by any means without the prior written permission of EMS Aviation is strictly prohibited. This document does not contain technical data as defined in the International Traffic and Arms Regulations (ITAR) 22 CFR 120-130.