



**SAR Evaluation Report
for
FCC OET Bulletin 65 Supplement C
and
Industry Standard RSS-102 Issue 2**

Report No.: 07-09-MAS-165-03

Client: Thomson Inc.
Product: DECT 6.0 Cordless Two Line Phone w/ ITAD Speakerphone
Model: 25250XXX-A
Manufacturer/supplier: Telefield Ltd.

Date test item received: 2007/09/28

Date test campaign completed: 2007/10/31

Date of issue: 2007/11/02




Test Result: ☒ Compliance ☐ Not Compliance

Statement of Compliance:

The SAR values measured for the test sample are below the maximum recommended level of 1.6 W/kg averaged over any 1g tissue according to FCC OET Bulletin 65 Supplement C (Edition 01-01) and Industry Canada RSS-102 (Issue 2, 2005).

The test result only corresponds to the tested sample. It is not permitted to copy this report, in part or in full, without the permission of the test laboratory.

Total number of pages of this test report: 71 pages

Test Engineer	Checked by	Approved by
		
Eric Lin	Joe Hsieh	Winpo Tsai

The testing described in this report has been carried out to the best of our knowledge and ability, and our responsibility is limited to the exercise of reasonable care. This certification is not intended to believe the sellers from their legal and/or contractual obligations.

Applicant Information

Client	: Thomson Inc.
Address	: 10330 North Meridian Street Indianapolis, IN 46290
Contact	: Roger Hunt
Manufacturer	: Telefield Ltd.
Address	: No. 1 Industrial Area, Zhuliao, Guangzhou Baiyun Area, Guangdong Province, P.R.China
EUT	: DECT 6.0 Cordless Two Line Phone w/ ITAD Speakerphone
Trade Name	: GE
Model No.	: 25250XXX-A
Standard Applied	: FCC OET 65 Supplement C (Edition 01-01, June 2001) Industry Standard RSS-102 Issue 2 (November 2005) IEEE Standard 1528-2003
Test Location	: Electronics Testing Center, Taiwan (www.etc.org.tw) No.8, Lane 29, Wenming RD., LeShan Tsuen, GuiShan Shiang, Taoyuan County 33383, Taiwan, R.O.C.

The US DECT handset of 25250XXX-A is in compliance with the FCC Report and Order 93-326 and Health Canada Safety Code 6, and the tests were performed according to the FCC OET65c and RSS-102 Issue 2 for uncontrolled exposure.

Table of Contents

EXECUTIVE SUMMARY	5
1 GENERAL INFORMATION	6
1.1 Description of Equipment Under Test	6
1.2 Photograph of EUT	6
1.3 Environment Conditions	7
1.4 FCC Requirements for SAR Compliance Testing	7
1.4.1 RF Exposure Limits	7
1.5 The SAR Measurement Procedure for Mobile	8
1.5.1 General Requirements	8
1.5.2 Phantom Requirements	8
1.5.3 Test Positions	8
1.5.4 Test Procedures	10
1.5.5 Test Procedures for Handset with Ear-Microphone and Belt-Clip	11
2 DESCRIPTION OF THE TEST EQUIPMENT	12
2.1 Test Equipment List	12
2.2 DASY4 Measurement System Diagram	13
2.3 DASY4 Measurement Server	14
2.4 DAE (Data Acquisition Electronics)	15
2.5 Phantom	16
2.6 Device Holder	16
2.7 Specifications of Probes	17
2.8 SAR Measurement Procedures in DASY4	17
2.9 Simulating Liquids	18
2.10 System Performance Check	18
2.10.1 Purpose	18
2.10.2 System Performance Check Procedure	18
2.10.3 System Performance Check Setup	19
2.10.4 Result of System Performance Check: Valid Result	20
3 RESULTS	21
3.1 Summary of Test Results	21
3.2 Head	21
3.3 Body	21
3.4 Measurement Position (Including LC, LT, RC, RT and Body)	22
3.4.1 Left-Cheek (LC)	22
3.4.2 Left-Tilt (LT)	22
3.4.3 Right-Cheek (RC)	23
3.4.4 Right-Tilt (RT)	23

3.4.5	Rear-UP.....	24
4	THE DESCRIPTION OF TEST PROCEDURE FOR FCC.....	25
4.1	Scan Procedure.....	25
4.2	SAR Averaging Methods	25
4.3	Data Storage	25
4.4	Data Evaluation.....	26
4.5	Spatial Peak SAR Evaluation.....	28
5	MEASUREMENT UNCERTAINTY.....	29
5.1	Measurement Uncertainty I (According to IEEE 1528)	29
5.2	Measurement Uncertainty II (According to IEC 62209)	30
6	REFERENCES	31
7	ANNEX : TEST RESULTS OF DASY4 (REFER TO ANNEX)	31

Executive Summary

The product 25250XXX-A is a new DECT handset from Thomson Inc. products operating in the 1920 ~ 1930 MHz frequency range. The measurements was conducted by ETC and carried out with the dosimetric assessment system – DASY4.

The measurements of handset were conducted according to FCC OET 65 Supplement C [Reference 5] for evaluating compliance with requirements of FCC Report and Order 96-326 [Reference 3] and also according to Industry Standard RSS-102 Issue 2 [Reference 8] for evaluating compliance with requirements of Health Canada Safety Code 6[Reference 9].

The handset under test was set to TBR6 mode and established a connection with FP emulator. The specific FP emulator can setup a TBR6 connection with handset on different combination of carrier and time-slot in loopback of handset with PSRBS data type.

Another important factor is the Crest Factor when applying SAR testing to DECT. It is usually declared by customer or we would use a spectrum to scan the duty cycle in time domain when transmitting in case laking such information. It was 1:24 for this sample.

Main test : 25250A

Series : 25210A, H5250

Model Different Description:

Model 25250A is with TAD (answering machine) function, one Base + One Handset unit; main features are as: 2 line, multi Handset - max. to register with 10 handset units, with Digital TAD, CID, Base Speakerphone, Headset, Intercom.

Model 25210A is without TAD (answering machine) function, one Base + One Handset unit; main features are as: 2 line, multi Handset - max. to register with 10 handset units, with CID, Base Speakerphone, Headset, Intercom.

Model H5250 is the accesory Handset unit for 25250 or 25210, which include One Handset & One Charger unit.

1 General Information

1.1 Description of Equipment Under Test

EUT Type	DECT 6.0 Cordless Two Line Phone w/ ITAD Speakerphone
Trade Name	GE
Model Name	25250XXX-A
Hardware version	N/A
Software version	N/A
Tx Frequency	1921.536 ~ 1928.448 MHz
Rx Frequency	1921.536 ~ 1928.448 MHz
Antenna Type	Internal Type
Max. conducted output power	17.46 dBm (measured in CH00)
Device Category	Portable Part
RF Exposure Environment	General Population / Uncontrolled
Power supply	Internal battery (DC 2.4V / 700mA)
Crest Factor	24
Body-Worn Operation	<input checked="" type="checkbox"/> Yes <input type="checkbox"/> No
Appurtenances	<input checked="" type="checkbox"/> Ear-Microphone <input checked="" type="checkbox"/> Belt-Clip

1.2 Photograph of EUT



1.3 Environment Conditions

Item	Target	Measured
Ambient Temperature (°C)	15 ~ 30	22 ± 1
Temperature of Simulant (°C)	20 ~ 24	22 ± 1
Relative Humidity(% RH)	30 ~ 70	60 ~ 70

1.4 FCC Requirements for SAR Compliance Testing

According to the FCC order “Guidelines for Evaluating the Environmental Effects of RF Radiation”, for consumer products, the SAR limit is **1.6 W/kg** for an uncontrolled environment and **8.0 W/kg** for an occupational/controlled environment. Pursuant to the Supplement C of OET Bulletin 65 “Evaluating Compliance with FCC Guide-lines for Human Exposure to Radio frequency Electromagnetic Fields”, released on June 29, 2001 by FCC, the equipment under test should be evaluated at maximum output power (radiated from the antenna) under “worst-case” conditions for intended or normal operation, incorporating normal antenna operating positions, equipment under test peak performance frequencies and positions for maximum RF power coupling.

1.4.1 RF Exposure Limits

	Whole-Body	Partial-Body	Arms and Legs
Population/Uncontrolled Environments (W/kg)	0.08	1.6	4.0
Occupational/Controlled Environments (W/kg)	0.4	8.0	20.0

Notes:

1. Population/Uncontrolled Environments: Locations where there is the exposure of individuals who have no sense or control of their exposure.
2. Occupational/Controlled Environments: Locations where there is exposure that may be incurred by people who have knowledge of the potential for exposure.
3. Whole-Body: SAR is averaged over the entire body.
4. Partial-Body: SAR is averaged over any 1g of tissue volume as defined in specification.
5. Arms and Legs: SAR is averaged over 10g of tissue volume as defined in specification.

1.5 The SAR Measurement Procedure for Mobile

1.5.1 General Requirements

The test should be performance in a laboratory without influence on SAR measurements by ambient RF sources and any reflection from the environment inside. The ambient temperature should be kept in the range of 15°C to 30°C with a maximum variation within $\pm 2^\circ\text{C}$ during the test.

1.5.2 Phantom Requirements

The phantoms used in test are simplified representations of the human head and body as a specific shaped container for the head or body simulating liquids. The physical characteristics of the phantom models should resemble the head and the body of a mobile user since the shape is a dominant parameter for exposure. The shell of the phantom should be made of low loss and low permittivity material and the thickness tolerance should be less than 0.2 mm. In addition, the phantoms should provide simulations of both right and left hand operations.

1.5.3 Test Positions

Due to a fact of that it cannot be expected that all mobile user will hold the mobile exactly in one well-defined position, different operational conditions should be conducted. IEEE 1528-2003 [Reference 7] requires two test positions: the cheek and tilted positions. In each test position the acoustic output should be placed directly at the entrance of the auditory canal in phantom.

The acoustic output is defined in Fig. 1. There are two imaginary lines defined on the handset: the vertical center line and the horizontal line and the cross of these two lines is the acoustic output. The human head position is given by means of a reference plane defined by the following three reference points: RE (Right-Ear), LE (Left-Ear) and M (Mouth) and shown in Fig. 2 and 3.

The Cheek Position: the vertical center line should lie in the reference plane and the acoustic output meets the reference points RE or LE. The vertical center line should align to the line connecting the point M to points RE or LE and the angle between these two lines should be reduced to minimum by touching the cheek of the phantom with handset.

The Tilted Position: same as Cheek Position but only change the angle by 15° between vertical center line and the line connecting the point M to points RE or LE.

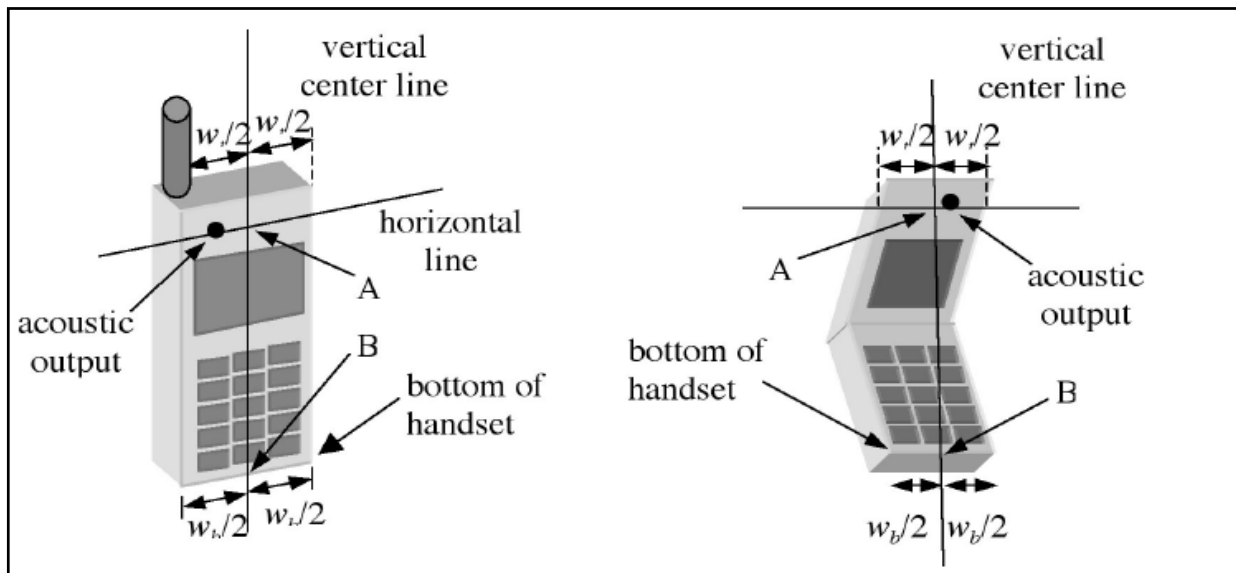


Fig.1 Test reference points on handset

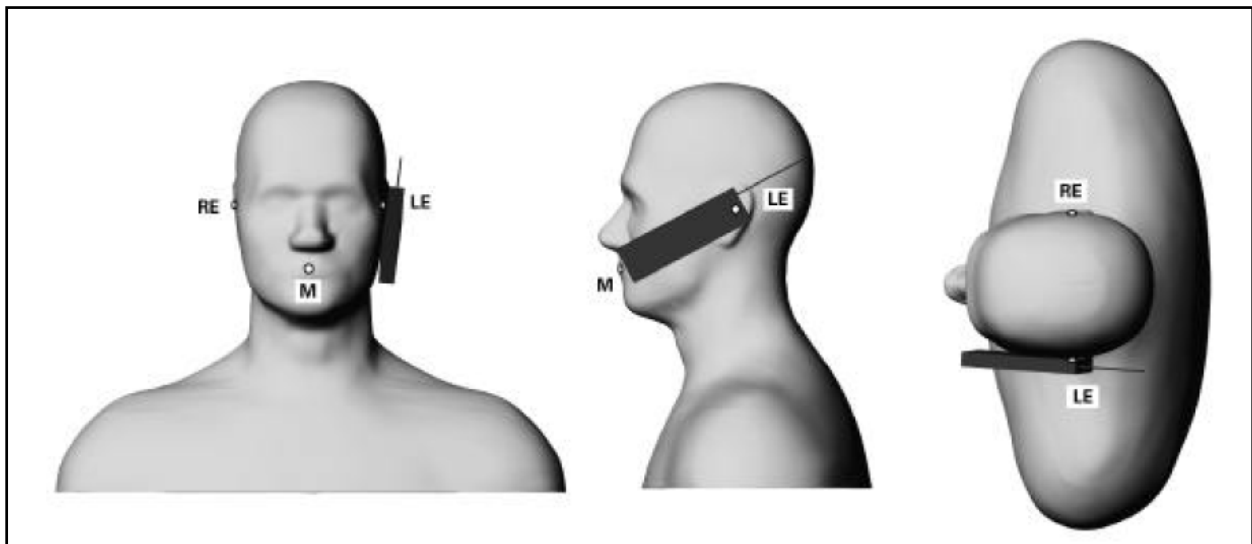


Fig. 2 Cheek Position

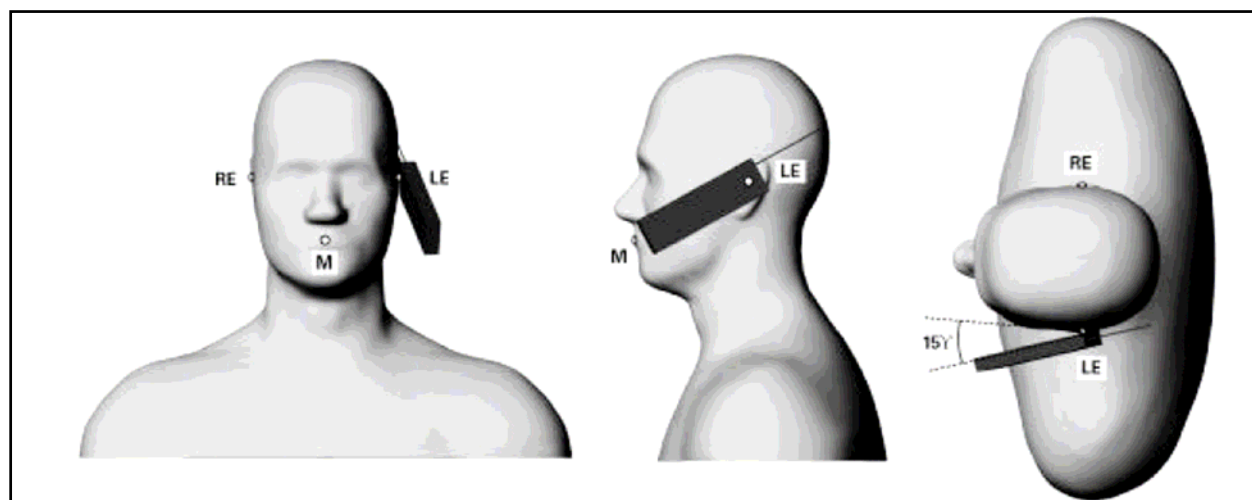
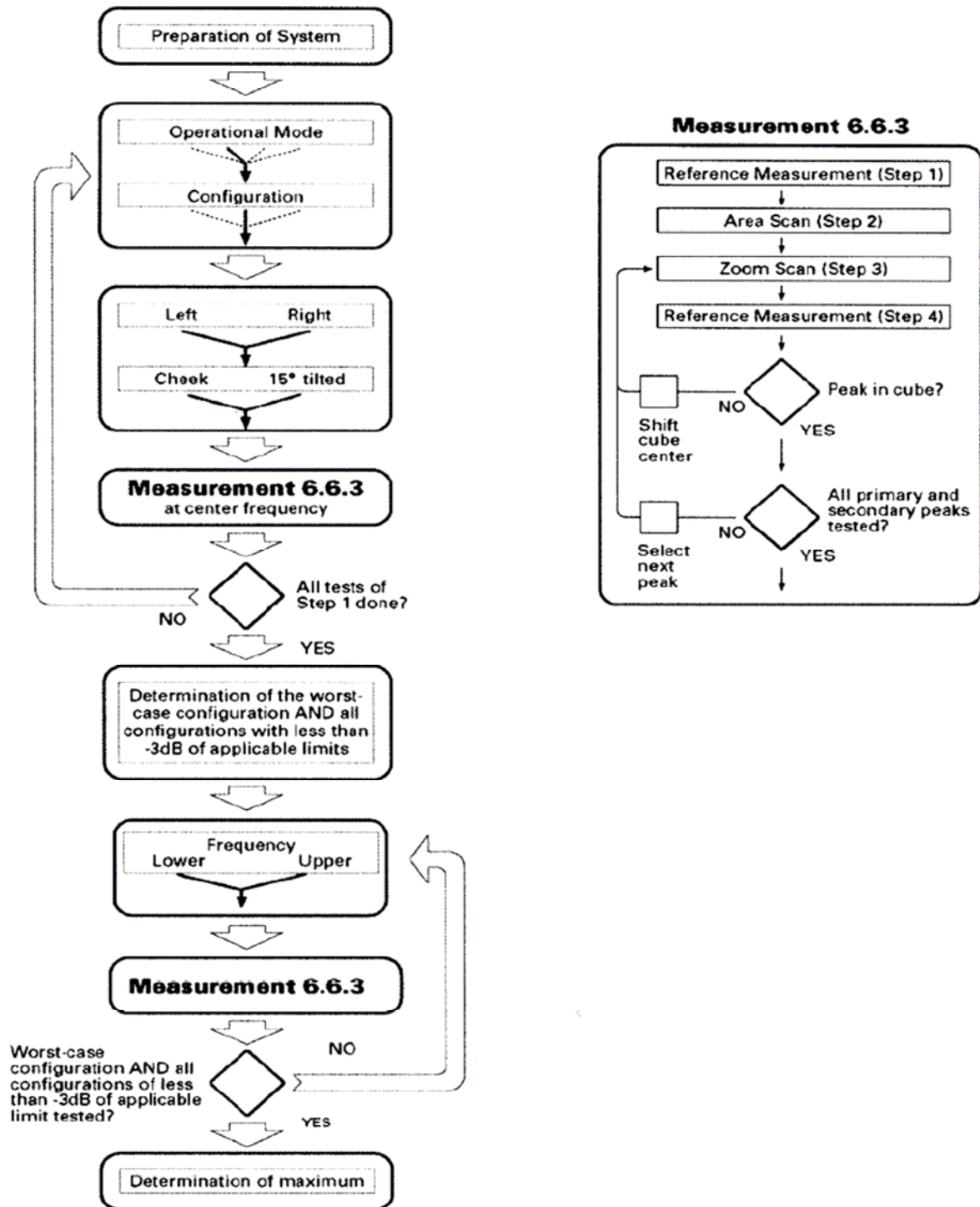


Fig. 3 Tilted Position

1.5.4 Test Procedures

The SAR test should be performed with both Cheek Position and Tilted Position mentioned above. The detailed procedure is referenced to the following flow chart to apply SAR test on US DECT Handset for HEAD.



1.5.5 Test Procedures for Handset with Ear-Microphone and Belt-Clip

The SAR test should be performed with ONLY Rear-UP Position as referenced to pictures of 3.4.5 in low, middle and high frequencies. After that the largest value of SAR results can be determined.

2 Description of the Test Equipment

The measurements were performed using an automated near-field scanning system, DASY4 software, manufactured by Schmid & Partner Engineering AG (SPEAG) in Switzerland. The SAR extrapolation algorithm used in all measurements on the test device was the ‘worstcase extrapolation’ algorithm.

2.1 Test Equipment List

Equipment	Manufacturer	Type	S/N	Calibration Expiry
Robot	Staubli	RX90B L	F03/5W16A1/A/01	(not necessary)
Robot Controller	Staubli	CS7MB	F03/5W16A1/C/01	(not necessary)
Teach Pendant	Staubli	-----	D221340061	(not necessary)
DAE4	Schmid & Partner Engineering AG	-----	629	2008-09-25
E-field Probe	Schmid & Partner Engineering AG	EX3DV4	3555	2008-09-25
Dipole Validation Kit	Schmid & Partner Engineering AG	D1900V2	5d054	2008-10-16
DIGITAL RADIO TESTER	Rohde & Schwarz	CTS 60	1094.0006.60 Sr.100584	2008-03-04
Universal Radio Communication Tester	Rohde & Schwarz	CMU200	101006	2008-01-07
Digital Thermometer	DER EE	K-TYPE	DE-3003	2008-01-17
Directional Coupler	Amplifier Research	DC7420	310569	2007-12-05
DASY4 Software	Schmid & Partner Engineering AG	-----	Version 4.6B23	To automatically control the robot and perform the SAR measurement
SEMCAD Software	Schmid & Partner Engineering AG	-----	Version 1.8B160	Post-processing and report management
Signal Generator	Agilent	83640B	3844A01143	2008-09-20
Amplifier	Mini-Circuits	ZHL-42W	D111704-01-02	2008-01-30
Power Meter	BOONTON	4532-0102	136601	2008-05-08
Power Sensor	BOONTON	51011-EMC	32861	2008-05-08
Power Sensor	BOONTON	56518	3233	2008-05-08
S-Parameter Network Analyzer	Agilent	8753ES	MY40001340	2007-12-03
Calibration Kit	Agilent	85033C	2920A03287	(not necessary)
Dielectric Probe Kit	Agilent	85070E	MY44300101	(not necessary)

2.2 DASY4 Measurement System Diagram

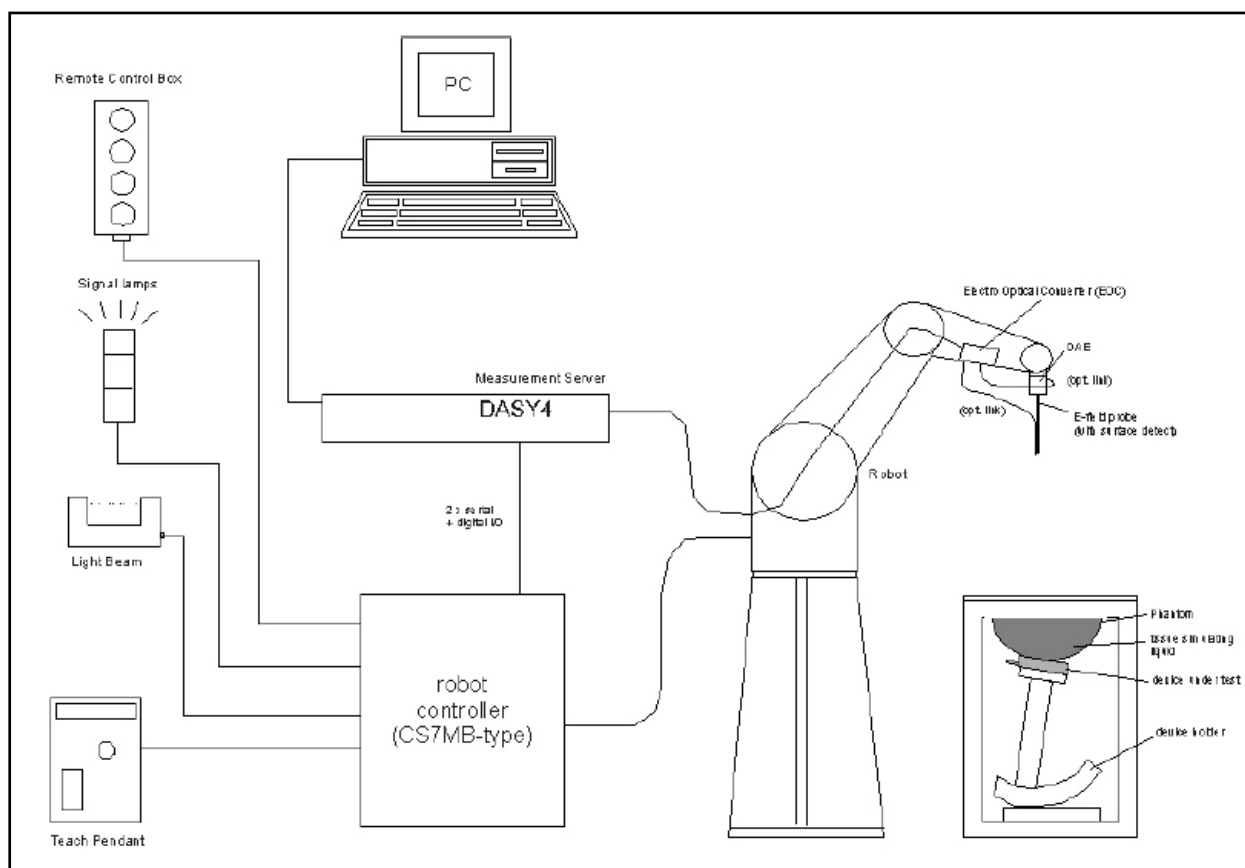


Fig. 5 The DASY4 Measurement System

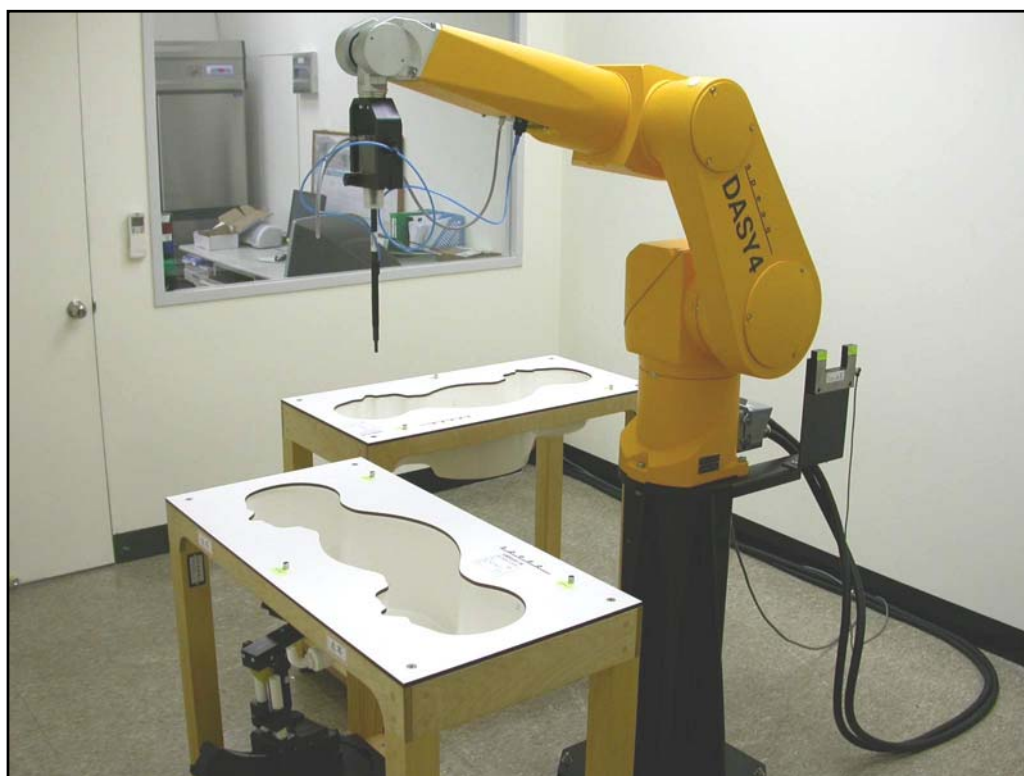


Fig. 6 The DASY4 System used in ETC set-up with two phantoms

The DASY4 system consists of the following items:

- A fixed-on-ground high precision 6-axis robot with controller and software and an arm extension for moving the Data Acquisition Electronics (DAE) and Probe.
- A dosimetric probe, an isotropic E-field probe optimized and calibrated for usage in head or body tissue simulating liquids. Some of the probes are equipped with an optical surface detector system.
- A Data Acquisition Electronic (DAE) performing the signal amplification, signal multiplexing, AD-conversion, offset measurements, mechanical surface detection, collision detection, etc. DAE is powered with standard or rechargeable batteries. The signal is optically transmitted to the EOC.
- A unit to operate the optical surface detector which is connected to Electro-Optical Coupler (EOC).
- The EOC performs the conversion from the optical into a digital electric signal of the DAE. The EOC is connected to the DASY4 measurement server.
- The DASY4 measurement server performing all real-time data evaluation for field measurements and surface detection, controlling robot movements and handling safety operation. A computer with operating Windows 2000 is used for server.
- DASY4 software and SEMCAD data evaluation software are installed in PC.
- Remote control with teach panel and additional circuitry for robot safety such as warning lamps, etc.
- The generic twin phantom enabling the testing of left-hand and right-hand usage.
- The device holder for handheld mobile phones.
- Tissue simulating liquid mixed well according to the given recipes.
- System validation dipoles is used to validate the proper functioning of the system

2.3 DASY4 Measurement Server



Fig. 7 DASY4 Measurement Server

The DASY4 measurement server is based on a PC/104 CPU board with a 166MHz low-power pentium, 32MB chipdisk and 64MB RAM. The necessary circuits for communication with either the DAE4 (or DAE3) electronic box as well as the 16-bit AD-converter system for optical

detection and digital I/O interface are contained on the DASY4 I/O-board, which is directly connected to the PC/104 bus of the CPU board.

The measurement server performs all real-time data evaluation for field measurements and surface detection, controls robot movements and handles safety operation. The PC-operating system cannot interfere with these time critical processes. All connections are supervised by a watchdog, and disconnection of any of the cables to the measurement server will automatically disarm the robot and disable all program-controlled robot movements. Furthermore, the measurement server is equipped with two expansion slots which are reserved for future applications. Please note that the expansion slots do not have a standardized pinout and therefore only the expansion cards provided by SPEAG can be inserted. Expansion cards from any other supplier could seriously damage the measurement server.

2.4 DAE (Data Acquisition Electronics)



Fig. 8 DAE used in ETC

Some probes are equipped with an optical multifiber line, ending at the front of the probe tip. This line is connected to the EOC box on the robot arm and provides automatic detection of the phantom surface. Half of the fibers are connected to a pulsed infrared transmitter, the other half to a synchronized receiver. If the probe approaches the surface, the reflection from the surface produces a coupling from the transmitting to the receiving fibers. This reflection increases during the approach, reaches a maximum and then decreases. If the probe perpendicularly touches the surface, the coupling is zero. The distance of the coupling maximum to the surface is independent of the surface reflectivity and largely independent of the surface to probe angle. The DASY4 software reads the reflection during a software approach and looks for the maximum using a 2nd order fitting. The approach is stopped upon reaching the maximum.

The optical surface detection works in transparent liquids and on di_use reflecting surfaces with a repeatability of better than $\pm 0.1\text{mm}$. The distance of the maximum depends on the fiber and the surrounding media. It is typically 1.0mm to 2.0mm in tissue simulating mixtures. The distance can be measured with the surface check job (described in the reference guide).

2.5 Phantom

The phantom used for all tests i.e. for both system performance checking and device testing, was the twinheaded "SAM Twin Phantom V4.0", manufactured by SPEAG. The phantom conforms to the requirements of IEEE 1528 - 2003.

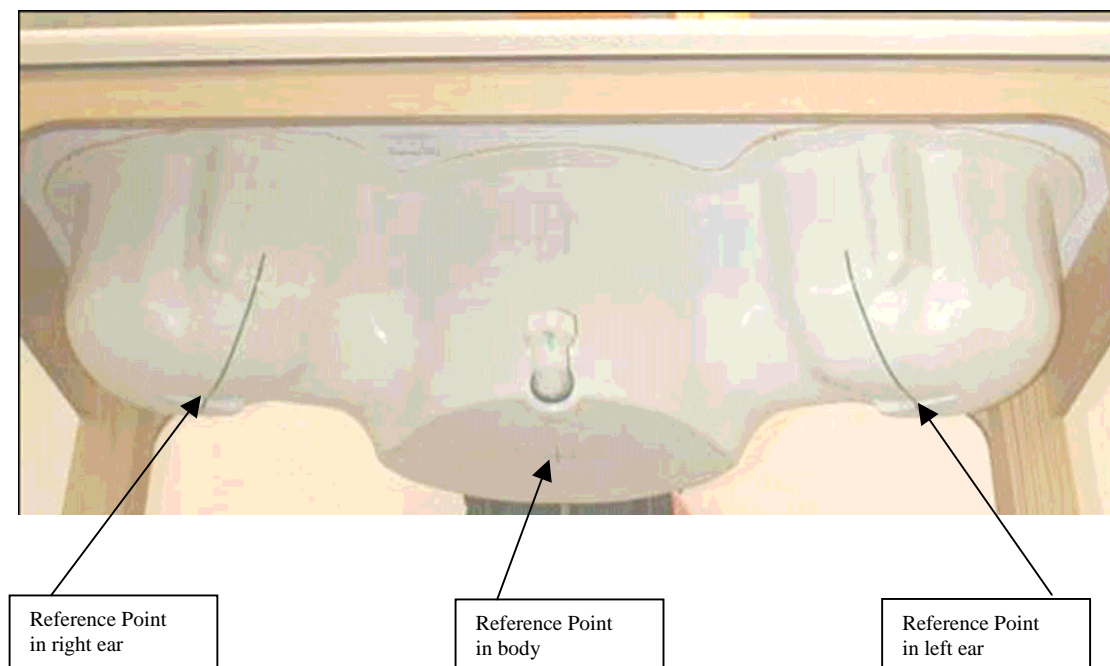


Fig. 9 SAM Twin Phantom and the definition points

2.6 Device Holder

The device was placed in the device holder (illustrated below) that is supplied by SPEAG as an integrated part of the Dasy system.



Fig. 10 Device holder supplied by SPEAG

2.7 Specifications of Probes

The E-Field Probes ET3DV6 or EX3DV4, manufactured and calibrated annually by Schmid & Partner Engineering AG with following specification are used for the dosimetric measurements.

ET3DV6:

- Dynamic range: $5 \mu\text{W/g} \sim 100 \text{ mW/g}$
- Tip diameter: 6.8 mm
- Probe linearity: $\pm 0.2 \text{ dB}$ (30MHz to 3 GHz)
- Axial isotropy: $\pm 0.2 \text{ dB}$
- Spherical isotropy: $\pm 0.4 \text{ dB}$
- Distance from probe tip to dipole centers: 2.7 mm
- Calibration range: 900MHz/1750MHz/1900MHz/ /2450MHz for head and body simulating liquids.

EX3DV4:

- Dynamic range: $10 \mu\text{W/g} \sim 100 \text{ mW/g}$
- Tip diameter: 2.5 mm
- Probe linearity: $\pm 0.2 \text{ dB}$ (30MHz to 3 GHz)
- Axial isotropy: $\pm 0.2 \text{ dB}$
- Spherical isotropy: $\pm 0.4 \text{ dB}$
- Distance from probe tip to dipole centers: 1.0 mm
- Calibration range: 900MHz/1810MHz for head simulating liquid and

2.8 SAR Measurement Procedures in DASY4

Step 1 Setup a Call Connection

Establish a call in handset at the maximum power level with a base station simulator via air interface.

Step 2 Power Reference Measurement

To measure the local E-field value at a fixed location which value will be taken as a reference value for calculating a possible power drift.

Step 3 Area Scan

To measure the SAR distribution with a grid with spacing of 15 mm x 15 mm and kept with a constant distance to the inner surface of the phantom. Additional all peaks within 3 dB of the maximum SAR are searched.

Step 4 Zoom Scan

At these points (maximum number of SAR peaks is two), a cube of 32 mm x 32 mm x 30 mm is applied to and measured with 5 x 5 x 7 points. With these measured data, a peak spatial-average SAR value can be calculated by SEMCAD software.

Step 5 Power Drift Measurement

Repetition of the E-field measurement at the fixed location mentioned in Step 1 to make sure the two results differ by less than $\pm 0.2 \text{ dB}$.

2.9 Simulating Liquids

Liquid Recipes for this test report are as following:

1900MHz band

Ingredient (% by weight)	HEAD	BODY
Water	55.85	69.61
Diethylene Glycol Butyl Ether(DGBE)	44.00	30.23
Salt	0.15	0.16

2.10 System Performance Check

2.10.1 Purpose

1. To verify the simulating liquids are valid for testing.
2. To verify the performance of testing system is valid for testing.

2.10.2 System Performance Check Procedure

The DASY4 installation includes predefined files with recommended procedures for measurements and the system performance check. They are read-only document files and destined as fully defined but unmeasured masks, so the finished system performance check must be saved under a different name. The system performance check document requires the SAM Twin Phantom, so this phantom must be properly installed in your system. (User defined measurement procedures can be created by opening a new document or editing an existing document file). Before you start the system performance check, you need only to tell the system with which components (probe, medium, and device) you are performing the system performance check; the system will take care of all parameters.

- **The Power Reference Measurement and Power Drift Measurement** jobs are located at the beginning and end of the batch process. They measure the field drift at one single point in the liquid over the complete procedure. The indicated drift is mainly the variation of the amplifier output power. If it is too high (above ± 0.1 dB), the system performance check should be repeated; some amplifiers have very high drift during warm-up. A stable amplifier gives drift results in the DASY system below ± 0.02 dB.

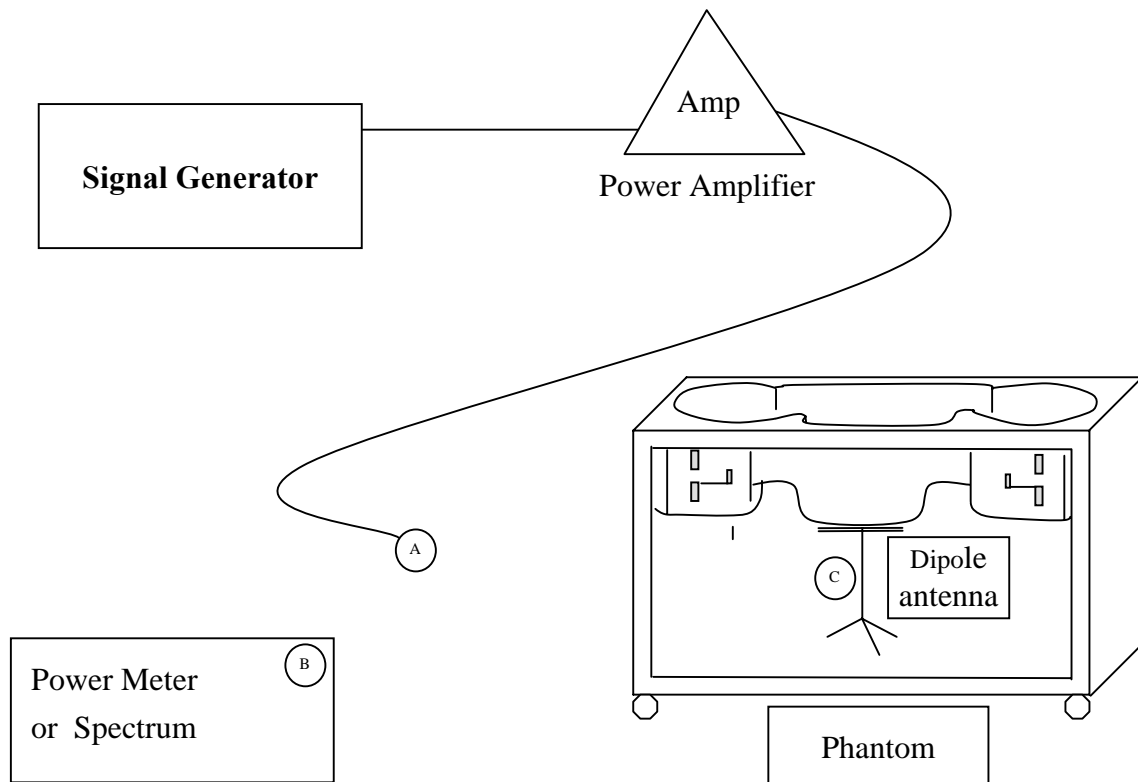
- **The Surface Check** job tests the optical surface detection system of the DASY system by repeatedly detecting the surface with the optical and mechanical surface detector and comparing the results. The output gives the detecting heights of both systems, the difference between the two systems and the standard deviation of the detection repeatability. Air bubbles or refraction in the liquid due to separation of the sugar-water mixture gives poor repeatability (above ± 0.1 mm). In that case it is better to abort the system performance check and stir the liquid.

- **The Area Scan** job measures the SAR above the dipole on a plane parallel to the surface. It is used to locate the approximate location of the peak SAR. The proposed scan uses large grid spacing for faster measurement; due to the symmetric field, the peak detection is reliable. Schmid & Partner Engineering AG, DASY4 Manual, February 2005 16-2 System Performance Check Application Notes If a finer graphic is desired, the grid spacing can be

reduced. Grid spacing and orientation have no influence on the SAR result.

- **The Zoom Scan** job measures the field in a volume around the peak SAR value assessed in the previous Area Scan job (for more information see the application note on SAR evaluation). If the system performance check gives reasonable results, the SAR peak, 1 g and 10 g spatial average SAR values normalized to 1W dipole input power give reference data for comparisons. The next sections analyze the expected uncertainties of these values, as well as additional checks for further information or troubleshooting.

2.10.3 System Performance Check Setup



Note :

1. A connected to B is used to make sure whether the input power is 250mW for target frequency..
2. A connected to C is used to input the measured power to dipole antenna

2.10.4 Result of System Performance Check: Valid Result

Diepole Antenna: D1900V2 (S/N: 5d054)

Date of Measurement And Reference Value	SAR@1g [W/kg]	Dielectric Parameters		Temperature [°C]
		ϵ_r	σ [S/m]	
Head 1900MHz Recommended Value	9.56 ±10% [8.604 ~ 10.516]	40 ± 5% [38 ~ 42]	1.4 ± 5% [1.33 ~ 1.47]	22.0 ± 2 [20 ~ 24]
2007-10-30	10.2	38.74	1.414	21.6

Diepole Antenna: D1900V2 (S/N: 5d054)

Date of Measurement And Reference Value	SAR@1g [W/kg]	Dielectric Parameters		Temperature [°C]
		ϵ_r	σ [S/m]	
Body 1900MHz Recommended Value	9.6 ±10% [8.64 ~ 10.56]	53.3 ± 5% [50.635 ~ 55.965]	1.52 ± 5% [1.444 ~ 1.596]	22.0 ± 2 [20 ~ 24]
2007-10-31	10.3	55.45	1.445	21.5

3 Results

3.1 Summary of Test Results

No deviations from the technical specification(s) were ascertained in the course of the tests performed.	<input checked="" type="checkbox"/>
The deviations as specified in this chapter were ascertained in the course of the tests Performed.	<input type="checkbox"/>

3.2 Head

Frequency		Mode	Conducted Power (dBm)			SAR@1g [W/kg]	Power Drift (dB)	Note
CH	MHz		Before	After	Drift			
2	1924.992	LC-Mid	17.3	17.2	-0.1	0.00694	0.017	Worst
2	1924.992	LT-Mid	17.2	17.1	-0.1	0.00591	0.080	
2	1924.992	RC-Mid	17.4	17.2	-0.2	0.00557	-0.169	
2	1924.992	RT-Mid	17.3	17.1	-0.2	0.00461	-0.140	

0	1928.448	LC-High	17.3	17.2	-0.1	0.00618	-0.177	
4	1921.536	LC-Low	17.2	17.0	-0.2	0.00618	-0.025	

The Max Head SAR@1900MHz@1g was 0.00694 W/kg, less than limitation of 1.6 W/kg.

3.3 Body

Frequency		Mode	Conducted Power (dBm)			SAR@1g [W/kg]	Power Drift (dB)	Note
CH	MHz		Before	After	Drift			
2	1924.992	Rear-Mid	17.2	17.1	-0.1	0.00968	-0.086	Worst
0	1928.448	Rear-High	17.3	17.2	-0.1	0.00721	-0.014	
4	1921.536	Rear-Low	17.3	17.1	-0.2	0.00737	0.087	

The Max Body SAR@1900MHz@1g was 0.00968 W/kg, less than limitation of 1.6 W/kg.

3.4 Measurement Position (Including LC, LT, RC, RT and Body)

3.4.1 Left-Cheek (LC)



Measurement Position of Left-Cheek (LC) with Handset

3.4.2 Left-Tilt (LT)



Measurement Position of Left-Tilt (LT) with Handset

3.4.3 Right-Cheek (RC)



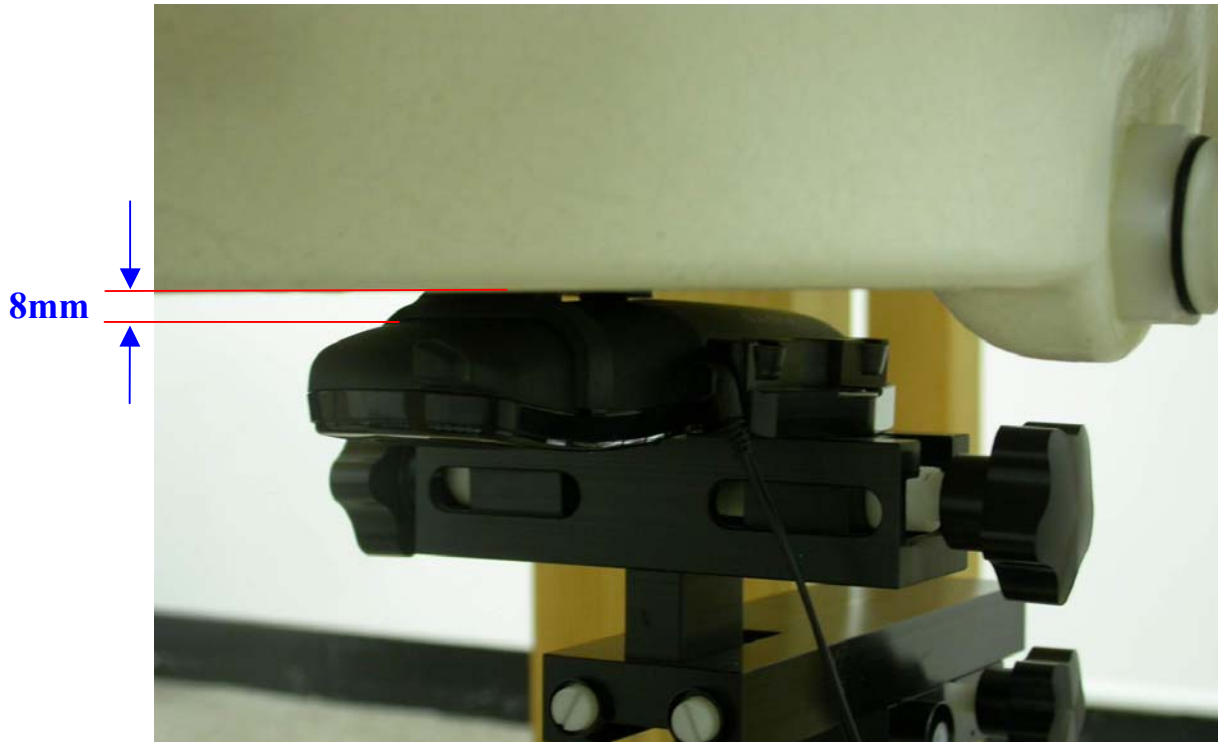
Measurement Position of Right-Cheek (RC) with Handset

3.4.4 Right-Tilt (RT)



Measurement Position of Right-Tilt (RT) with Handset

3.4.5 Rear-UP



Measurement Position of Rear-UP with Handset

4 The Description of Test Procedure for FCC

4.1 Scan Procedure

First coarse scans were used for determination of the field distribution. Next a cube scan, 5x5x7 points covering a volume of 32x32x30mm was performed around the highest E-field value to determine the averaged SAR value. Drift was determined by measuring the same point at the start of the coarse scan and again at the end of the cube scan.

4.2 SAR Averaging Methods

The maximum SAR value was averaged over a cube of tissue using interpolation and extrapolation. The interpolation, extrapolation and maximum search routines within Dasy4 are all based on the modified Quadratic Shepard's method (Robert J. Renka, "Multivariate Interpolation Of Lagre Sets Of Scattered Data", University of North Texas ACM Transactions on Mathematical Software, vol. 14, no. 2, June 1988, pp. 139-148).

The interpolation scheme combines a least-square fitted function method with a weighted average method. A trivariate 3-D / bivariate 2-D quadratic function is computed for each measurement point and fitted to neighbouring points by a least-square method. For the cube scan, inverse distance weighting is incorporated to fit distant points more accurately. The interpolating function is finally calculated as a weighted average of the quadratics. In the cube scan, the interpolation function is used to extrapolate the Peak SAR from the deepest measurement points to the inner surface of the phantom.

4.3 Data Storage

The DASY4 software stores the assessed data from the data acquisition electronics as raw data (in microvolt readings from the probe sensors), together with all the necessary software parameters for the data evaluation (probe calibration data, liquid parameters and device frequency and modulation data) in measurement files with the extension .DA4. The postprocessing software evaluates the desired unit and format for output each time the data is visualized or exported. This allows verification of the complete software setup even after the measurement and allows correction of erroneous parameter settings.

The measured data can be visualized or exported in different units or formats, depending on the selected probe type (e.g., [V/m], [A/m] or [W/kg]). Some of these units are not available in certain situations or give meaningless results, e.g., a SAR-output in a lossless media will always be zero. Raw data can also be exported to perform the evaluation with other software packages.

4.4 Data Evaluation

The DASY4 postprocessing software (SEMCAD) automatically executes the following procedures to calculate the field units from the microvolt readings at the probe connector. The parameters used in the evaluation are stored in the configuration modules of the software:

Probe parameters:	- Sensitivity	$Norm_i, a_{i0}, a_{i1}, a_{i2}$
	- Conversion factor	$ConvF_i$
	- Diode compression point	dcp_i
Device parameters:	- Frequency	f
	- Crest factor	cf
Media parameters:	- Conductivity	σ
	- Density	ρ

These parameters must be set correctly in the software. They can be found in the component documents or they can be imported into the software from the configuration files issued for the DASY components. In the direct measuring mode of the multimeter option, the parameters of the actual system setup are used. In the scan visualization and export modes, the parameters stored in the corresponding document files are used.

The first step of the evaluation is a linearization of the filtered input signal to account for the compression characteristics of the detector diode. The compensation depends on the input signal, the diode type and the DC-transmission factor from the diode to the evaluation electronics. If the exciting field is pulsed, the crest factor of the signal must be known to correctly compensate for peak power. The formula for each channel can be given as:

$$V_i = U_i + U_i^2 \cdot \frac{cf}{dcp_i}$$

with V_i	= compensated signal of channel i	(i = x, y, z)
U_i	= input signal of channel i	(i = x, y, z)
cf	= crest factor of exciting field	(DASY parameter)
dcp_i	= diode compression point	(DASY parameter)

From the compensated input signals the primary field data for each channel can be evaluated:

$$\begin{aligned} \text{E - fieldprobes :} \quad E_i &= \sqrt{\frac{V_i}{Norm_i \cdot ConvF}} \\ \text{H - fieldprobes :} \quad H_i &= \sqrt{V_i} \cdot \frac{a_{i0} + a_{i1}f + a_{i2}f^2}{f} \end{aligned}$$

with	V_i	= compensated signal of channel i	(i = x, y, z)
	$Norm_i$	= sensor sensitivity of channel i	(i = x, y, z)
		$\mu V/(V/m)^2$ for E-field Probes	
	$ConvF$	= sensitivity enhancement in solution	
	a_{ij}	= sensor sensitivity factors for H-field probes	
	f	= carrier frequency [GHz]	
	E_i	= electric field strength of channel i in V/m	
	H_i	= magnetic field strength of channel i in A/m	

The RSS value of the field components gives the total field strength (Hermitian magnitude):

$$E_{tot} = \sqrt{E_x^2 + E_y^2 + E_z^2}$$

The primary field data are used to calculate the derived field units.

$$SAR = E_{tot}^2 \cdot \frac{\sigma}{\rho \cdot 1'000}$$

with	SAR	= local specific absorption rate in mW/g
	E_{tot}	= total field strength in V/m
	σ	= conductivity in [mho/m] or [Siemens/m]
	ρ	= equivalent tissue density in g/cm ³

Note that the density is set to 1, to account for actual head tissue density rather than the density of the tissue simulating liquid.

4.5 Spatial Peak SAR Evaluation

The procedure for spatial peak SAR evaluation has been implemented according to the IEEE1529 standard. It can be conducted for 1 g and 10 g, as well as for user-specific masses. The DASY4 system allows evaluations that combine measured data and robot positions, such as:

- maximum search
- boundary correction
- extrapolation
- peak search for averaged SAR

During a maximum search, global and local maxima searches are automatically performed in 2-D after each Area Scan measurement with at least 6 measurement points. It is based on the evaluation of the local SAR gradient calculated by the Quadratic Shepard's method. The algorithm will find the global maximum and all local maxima within -2 dB of the global maxima for all SAR distributions.

Extrapolation

Extrapolation routines are used to obtain SAR values between the lowest measurement points and the inner phantom surface. The extrapolation distance is determined by the surface detection distance and the probe sensor o_set . Several measurements at different distances are necessary for the extrapolation. Extrapolation routines require at least 10 measurement points in 3-D space. They are used in the Zoom Scan to obtain SAR values between the lowest measurement points and the inner phantom surface. The routine uses the modified Quadratic Shepard's method for extrapolation. For a grid using 5x5x7 measurement points with 5mm resolution amounting to 343 measurement points, the uncertainty of the extrapolation routines is less than 1% for 1 g and 10 g cubes.

Boundary effect

For measurements in the immediate vicinity of a phantom surface, the field coupling effects between the probe and the boundary influence the probe characteristics. Boundary effect errors of different dosimetric probe types have been analyzed by measurements and using a numerical probe model. As expected, both methods showed an enhanced sensitivity in the immediate vicinity of the boundary. The effect strongly depends on the probe dimensions and disappears with increasing distance from the boundary. The sensitivity can be approximately given as:

$$S \approx S_o + S_b \exp\left(-\frac{z}{a}\right) \cos\left(\pi \frac{z}{\lambda}\right)$$

Since the decay of the boundary effect dominates for small probes ($a \ll \lambda$), the cos-term can be omitted. Factors S_b (parameter Alpha in the DASY4 software) and a (parameter Delta in the DASY4 software) are assessed during probe calibration and used for numerical compensation of the boundary effect. Several simulations and measurements have confirmed that the compensation is valid for different field and boundary configurations.

This simple compensation procedure can largely reduce the probe uncertainty near boundaries. It works well as long as:

- the boundary curvature is small
- the probe axis is angled less than 30° to the boundary normal
- the distance between probe and boundary is larger than 25% of the probe diameter
- the probe is symmetric (all sensors have the same offset from the probe tip)

Since all of these requirements are fulfilled in a DASY4 system, the correction of the probe boundary effect in the vicinity of the phantom surface is performed in a fully automated manner via the measurement data extraction during postprocessing.

5 Measurement Uncertainty

5.1 Measurement Uncertainty I (According to IEEE 1528)

DASY4 Uncertainty Budget According to IEEE 1528 [2]								
Error Description	Uncertainty value	Prob. Dist.	Div.	(c_i) 1g	(c_i) 10g	Std. Unc. (1g)	Std. Unc. (10g)	(v_i) v_{eff}
Measurement System								
Probe Calibration	±5.9 %	N	1	1	1	±5.9 %	±5.9 %	∞
Axial Isotropy	±4.7 %	R	$\sqrt{3}$	0.7	0.7	±1.9 %	±1.9 %	∞
Hemispherical Isotropy	±9.6 %	R	$\sqrt{3}$	0.7	0.7	±3.9 %	±3.9 %	∞
Boundary Effects	±1.0 %	R	$\sqrt{3}$	1	1	±0.6 %	±0.6 %	∞
Linearity	±4.7 %	R	$\sqrt{3}$	1	1	±2.7 %	±2.7 %	∞
System Detection Limits	±1.0 %	R	$\sqrt{3}$	1	1	±0.6 %	±0.6 %	∞
Readout Electronics	±0.3 %	N	1	1	1	±0.3 %	±0.3 %	∞
Response Time	±0.8 %	R	$\sqrt{3}$	1	1	±0.5 %	±0.5 %	∞
Integration Time	±2.6 %	R	$\sqrt{3}$	1	1	±1.5 %	±1.5 %	∞
RF Ambient Conditions	±3.0 %	R	$\sqrt{3}$	1	1	±1.7 %	±1.7 %	∞
Probe Positioner	±0.4 %	R	$\sqrt{3}$	1	1	±0.2 %	±0.2 %	∞
Probe Positioning	±2.9 %	R	$\sqrt{3}$	1	1	±1.7 %	±1.7 %	∞
Max. SAR Eval.	±1.0 %	R	$\sqrt{3}$	1	1	±0.6 %	±0.6 %	∞
Test Sample Related								
Device Positioning	±2.9 %	N	1	1	1	±2.9 %	±2.9 %	145
Device Holder	±3.6 %	N	1	1	1	±3.6 %	±3.6 %	5
Power Drift	±5.0 %	R	$\sqrt{3}$	1	1	±2.9 %	±2.9 %	∞
Phantom and Setup								
Phantom Uncertainty	±4.0 %	R	$\sqrt{3}$	1	1	±2.3 %	±2.3 %	∞
Liquid Conductivity (target)	±5.0 %	R	$\sqrt{3}$	0.64	0.43	±1.8 %	±1.2 %	∞
Liquid Conductivity (meas.)	±2.5 %	N	1	0.64	0.43	±1.6 %	±1.1 %	∞
Liquid Permittivity (target)	±5.0 %	R	$\sqrt{3}$	0.6	0.49	±1.7 %	±1.4 %	∞
Liquid Permittivity (meas.)	±2.5 %	N	1	0.6	0.49	±1.5 %	±1.2 %	∞
Combined Std. Uncertainty						±10.8 %	±10.6 %	330
Expanded STD Uncertainty						±21.6 %	±21.1 %	

5.2 Measurement Uncertainty II (According to IEC 62209)

DASY4 Uncertainty Budget According to IEC 62209 [3]								
Error Description	Uncertainty value	Prob. Dist.	Div.	(c_i) 1g	(c_i) 10g	Std. Unc. (1g)	Std. Unc. (10g)	(v_i) v_{eff}
Measurement System								
Probe Calibration	±5.9 %	N	1	1	1	±5.9 %	±5.9 %	∞
Axial Isotropy	±4.7 %	R	√3	0.7	0.7	±1.9 %	±1.9 %	∞
Spherical Isotropy	±9.6 %	R	√3	0.7	0.7	±3.9 %	±3.9 %	∞
Boundary Effects	±1.0 %	R	√3	1	1	±0.6 %	±0.6 %	∞
Linearity	±4.7 %	R	√3	1	1	±2.7 %	±2.7 %	∞
Detection Limits	±1.0 %	R	√3	1	1	±0.6 %	±0.6 %	∞
Readout Electronics	±0.3 %	N	1	1	1	±0.3 %	±0.3 %	∞
Response Time	±0.8 %	R	√3	1	1	±0.5 %	±0.5 %	∞
Integration Time	±2.6 %	R	√3	1	1	±1.5 %	±1.5 %	∞
Perturbation of the Environment	±3.0 %	R	√3	1	1	±1.7 %	±1.7 %	∞
Probe Positioner Mech. Restr.	±0.4 %	R	√3	1	1	±0.2 %	±0.2 %	∞
Probe Positioning	±2.9 %	R	√3	1	1	±1.7 %	±1.7 %	∞
Post-Processing	±1.0 %	R	√3	1	1	±0.6 %	±0.6 %	∞
Test Sample Related								
Test Sample Positioning	±2.9 %	N	1	1	1	±2.9 %	±2.9 %	145
Device Holder Uncertainty	±3.6 %	N	1	1	1	±3.6 %	±3.6 %	5
Drift of Output Power	±5.0 %	R	√3	1	1	±2.9 %	±2.9 %	∞
Phantom and Setup								
Phantom Uncertainty	±4.0 %	R	√3	1	1	±2.3 %	±2.3 %	∞
Liquid Conductivity (target)	±5.0 %	R	√3	0.7	0.5	±2.0 %	±1.4 %	∞
Liquid Conductivity (meas.)	±4.3 %	R	√3	0.7	0.5	±1.7 %	±1.2 %	∞
Liquid Permittivity (target)	±5.0 %	R	√3	0.6	0.5	±1.7 %	±1.4 %	∞
Liquid Permittivity (meas.)	±4.3 %	R	√3	0.6	0.5	±1.5 %	±1.2 %	∞
Combined Std. Uncertainty						±10.5 %	±10.2 %	330
Expanded Uncertainty						±21.0 %	±20.5 %	

6 References

1. [IEEE Std C95.1-2005]

Safety Levels with Respect to Human Exposure to Radio Frequency Electromagnetic Fields, 3 kHz to 300 GHz. The Institute of Electrical and Electronics Engineers, Inc. (IEEE), 2005.

2. [IEEE Std C95.3-1992]

Recommended Practice for the Measurement of Potentially Hazardous Electromagnetic Fields - RF and Microwave". The Institute of Electrical and Electronics Engineers, Inc. (IEEE), 1992.

3. [FCC Report and Order 96-326]

Federal Communications Commission, "Report and order: Guidelines for evaluating the environmental effects of radiofrequency radiation", Tech. Rep. FCC 96-326, 1996.

4. [FCC OET Bulletin 65]

Evaluating Compliance with FCC Guidelines for Human Exposure to Radiofrequency Electromagnetic Fields. OET Bulletin 65 Edition 97-01, August 1997. Federal Communications Commission (FCC), Office of Engineering & Technology. (OET)

5. [FCC OET Bulletin 65 Supplement C]

Additional Information for Evaluating Compliance of Mobile and Portable Device with FCC Limits for Human Exposure to Radiofrequency Emissions. Supplement C (Edition 01-01) to OET Bulletin 65, June 2001. Federal Communications Commission (FCC), Office of Engineering & Technology. (OET)

6. [DASY 4]

Schmid & Partner Engineering AG: DASY 4 Manual, September 2005.

7. [IEEE 1528-2003]

IEEE Std 1528-2003: IEEE Recommended Practice for Determining the Peak Spatial-Average Specific Absorption Rate (SAR) in the Human Head from Wireless Communications Devices: Measurement Techniques. 1528-2003, 19th December, 2003, The Institute of Electrical and Electronics Engineers, Inc. (IEEE).

8. [RSS-102, Issue 2]

Radio Standards Specification 102, Radio Frequency Exposure Compliance of Radiocommunication Apparatus (All Frequency Bands) sets out the requirements and measurement techniques used to evaluate radio frequency (RF) exposure compliance of radiocommunication apparatus designed to be used within the vicinity of the human body. November, 2005. Industry Canada.

9. [Health Canada Safety Code 6]

Canada's Safety Code 6: Limits of Human Exposure to Radiofrequency Electromagnetic Fields in the Frequency Range from 3 kHz to 300 GHz (99-EHD-237)

7 Annex : Test Results of DASY4 (Refer to ANNEX)

ANNEX

Index of Annex

ANNEX A: EXTERNAL CONSTRUCTION PHOTOS OF EUT.....	33
ANNEX B: SAR RESULTS.....	34
ANNEX C: DIPOLE CERTIFICATE.....	54
ANNEX D: PROBE CERTIFICATE.....	63

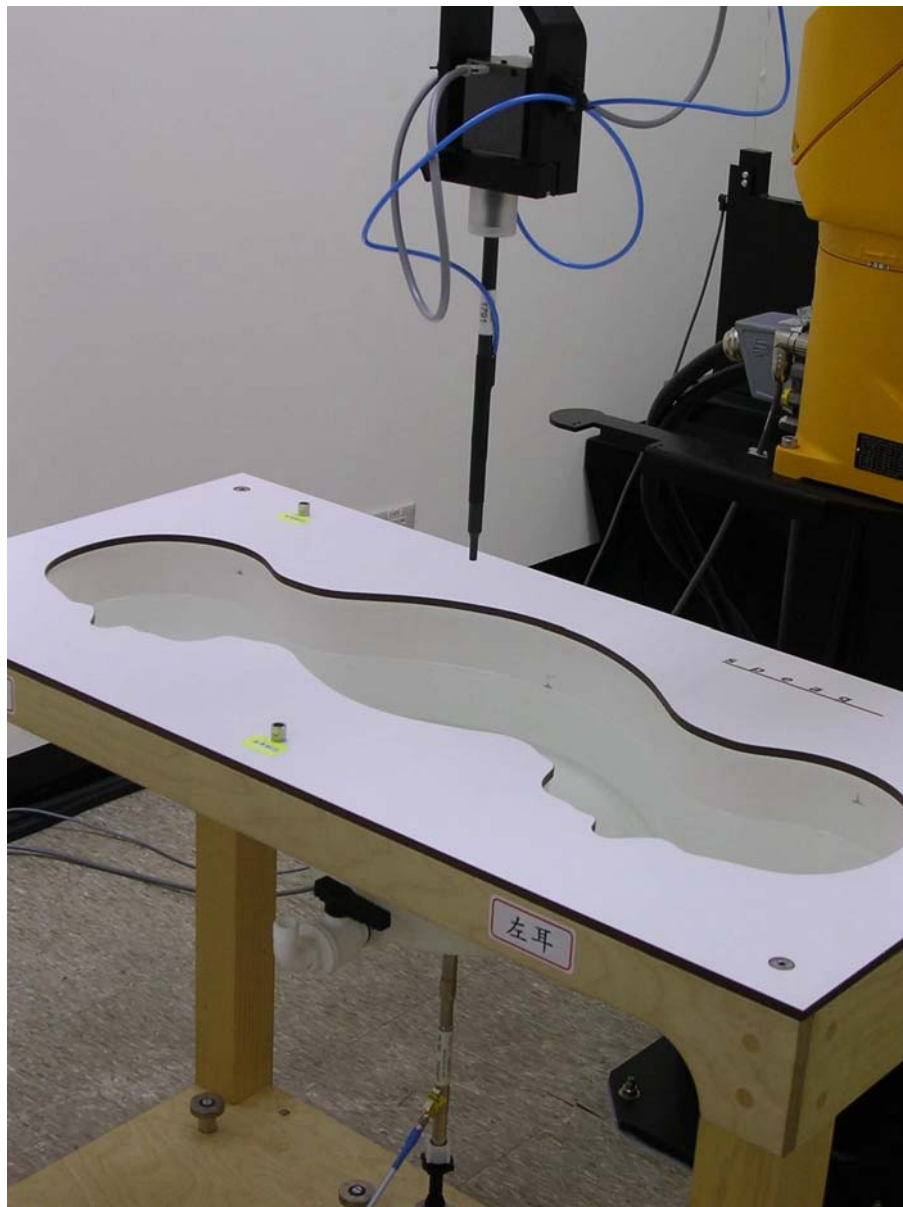
ANNEX A: EXTERNAL CONSTRUCTION PHOTOS OF EUT

	
<p>Top end of EUT</p>	<p>Bottom end of EUT</p>
	
<p>EUT Battery Compartment</p>	<p>NiMH Batteries</p>

ANNEX B: SAR RESULTS

System Performance Check

Head



Date/Time: 10/30/2007 9:10:33 AM

Test Laboratory: Electronics Testing Center, Taiwan

DUT: Dipole 1900 MHz; Type: D1900V2; Serial: D1900V2 - SN:xxx

Communication System: CW; Frequency: 1900 MHz; Duty Cycle: 1:1

Medium parameters used: $f = 1900$ MHz; $\sigma = 1.41$ mho/m; $\epsilon_r = 38.7$; $\rho = 1000$ kg/m³

Air temperature: 24 degC; Liquid temperature: 21.6 degC;

Phantom section: Flat Section

DASY4 Configuration:

- Probe: EX3DV4 - SN3555; ConvF(6.61, 6.61, 6.61); Calibrated: 9/26/2007

- Sensor-Surface: 4mm (Mechanical Surface Detection)

- Electronics: DAE4 Sn629;

- Phantom: SAM 12-2; Type: SAM4.0; Serial: TP-1347

- Measurement SW: DASY4, V4.6 Build 23; Postprocessing SW: SEMCAD, V1.8 Build 160

SPC/Area Scan (31x71x1): Measurement grid: dx=15mm, dy=15mm

Maximum value of SAR (interpolated) = 12.3 mW/g

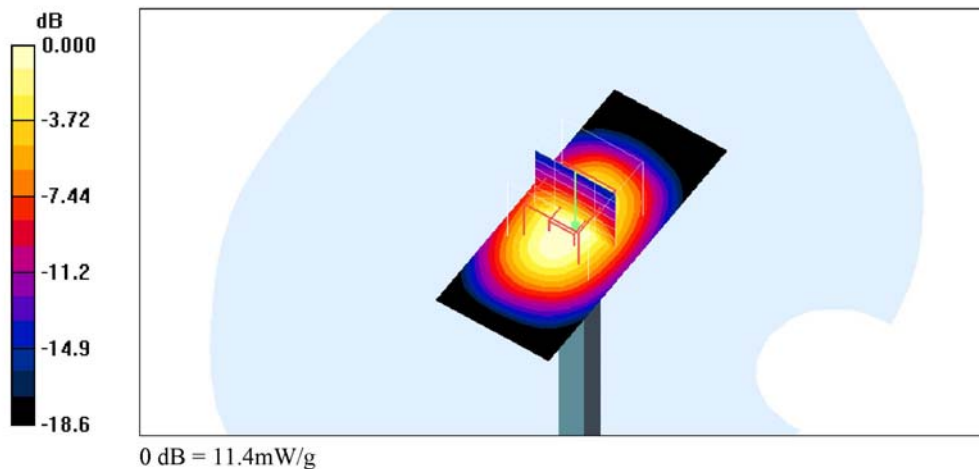
SPC/Zoom Scan (5x5x7)/Cube 0: Measurement grid: dx=8mm, dy=8mm, dz=5mm

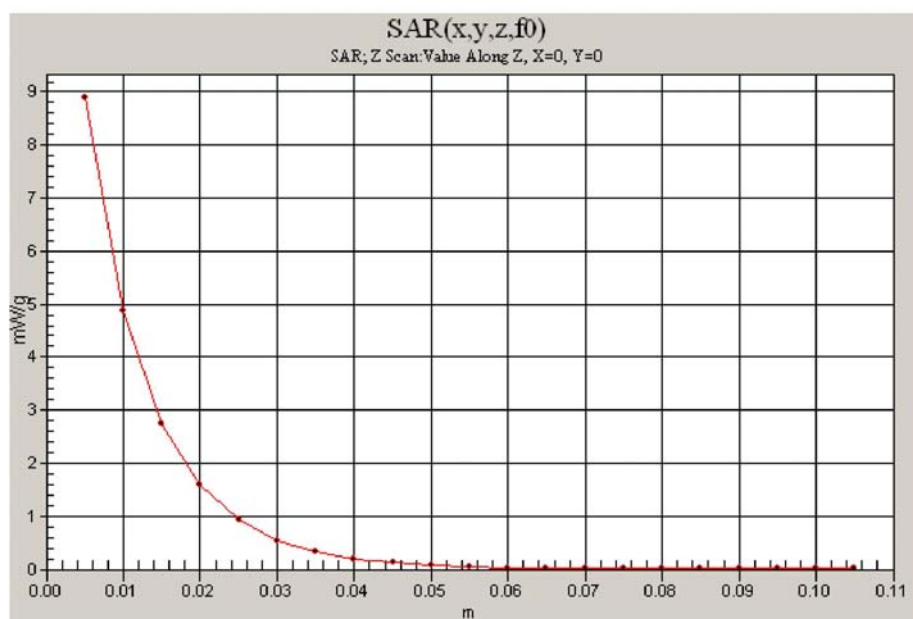
Reference Value = 88.2 V/m; Power Drift = 0.012 dB

Peak SAR (extrapolated) = 19.4 W/kg

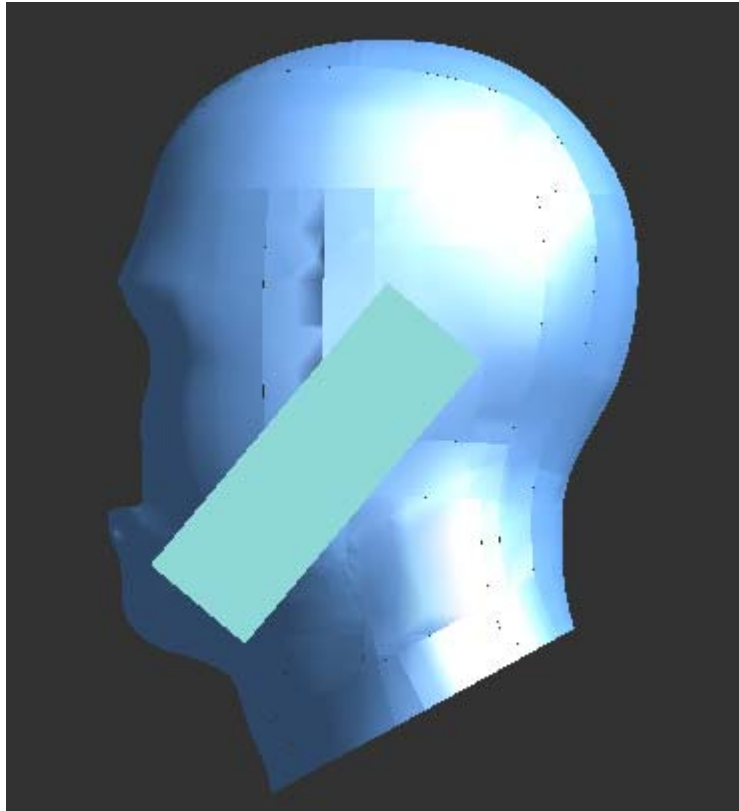
SAR(1 g) = 10.2 mW/g; SAR(10 g) = 5.19 mW/g

Maximum value of SAR (measured) = 11.4 mW/g





Left Head



Left Cheek

Date/Time: 10/30/2007 10:40:06 AM

Test Laboratory: Electronics Testing Center, Taiwan

DUT: DECT Phone; Type: PP; Serial: 25250XXX-A

Communication System: US DECT-1900; Frequency: 1925 MHz; Duty Cycle: 1:24
Medium parameters used: $f = 1925$ MHz; $\sigma = 1.44$ mho/m; $\epsilon_r = 38.6$; $\rho = 1000$ kg/m³
Air temperature: 24 degC; Liquid temperature: 21.6 degC;
Phantom section: Left Section

DASY4 Configuration:

- Probe: EX3DV4 - SN3555; ConvF(6.61, 6.61, 6.61); Calibrated: 9/26/2007
- Sensor-Surface: 4mm (Mechanical Surface Detection)
- Electronics: DAE4 Sn629;
- Phantom: SAM 12-2; Type: SAM4.0; Serial: TP-1347
- Measurement SW: DASY4, V4.6 Build 23; Postprocessing SW: SEMCAD, V1.8 Build 160

LC-MID/Zoom Scan (5x5x7)/Cube 0: Measurement grid: dx=8mm, dy=8mm, dz=5mm

Reference Value = 2.07 V/m; Power Drift = 0.017 dB

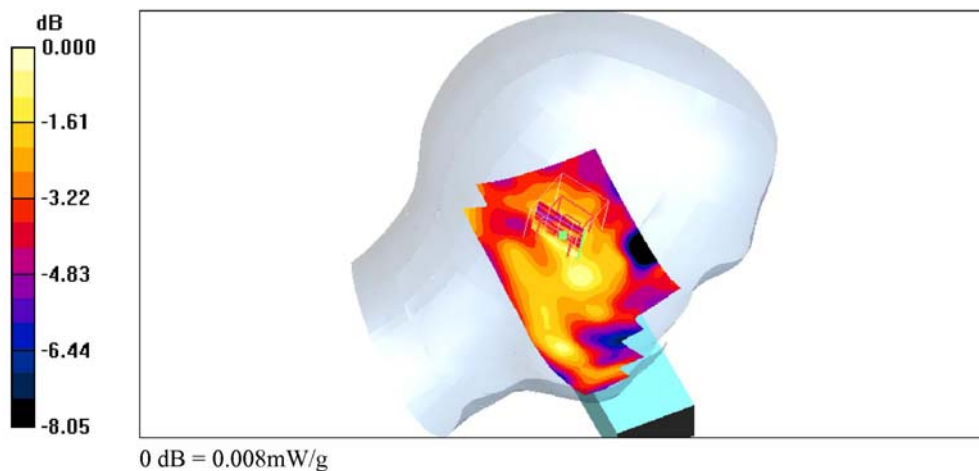
Peak SAR (extrapolated) = 0.021 W/kg

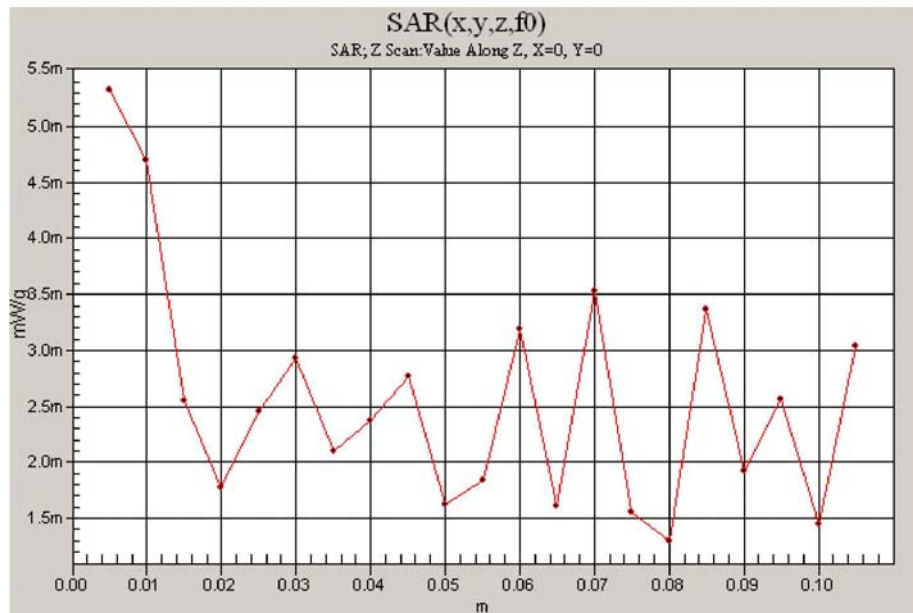
SAR(1 g) = 0.00694 mW/g; SAR(10 g) = 0.00521 mW/g

Maximum value of SAR (measured) = 0.008 mW/g

LC-MID/Area Scan (61x131x1): Measurement grid: dx=15mm, dy=15mm

Maximum value of SAR (interpolated) = 0.008 mW/g





Left Tilted

Date/Time: 10/30/2007 10:58:38 AM

Test Laboratory: Electronics Testing Center, Taiwan

DUT: DECT Phone; Type: PP; Serial: 25250XXX-A

Communication System: US DECT-1900; Frequency: 1925 MHz; Duty Cycle: 1:24
Medium parameters used: $f = 1925$ MHz; $\sigma = 1.44$ mho/m; $\epsilon_r = 38.6$; $\rho = 1000$ kg/m³
Air temperature: 24 degC; Liquid temperature: 21.6 degC;
Phantom section: Left Section

DASY4 Configuration:

- Probe: EX3DV4 - SN3555; ConvF(6.61, 6.61, 6.61); Calibrated: 9/26/2007
- Sensor-Surface: 4mm (Mechanical Surface Detection)
- Electronics: DAE4 Sn629;
- Phantom: SAM 12-2; Type: SAM4.0; Serial: TP-1347
- Measurement SW: DASY4, V4.6 Build 23; Postprocessing SW: SEMCAD, V1.8 Build 160

LT-MID/Zoom Scan (5x5x7)/Cube 0: Measurement grid: dx=8mm, dy=8mm, dz=5mm

Reference Value = 1.84 V/m; Power Drift = 0.080 dB

Peak SAR (extrapolated) = 0.013 W/kg

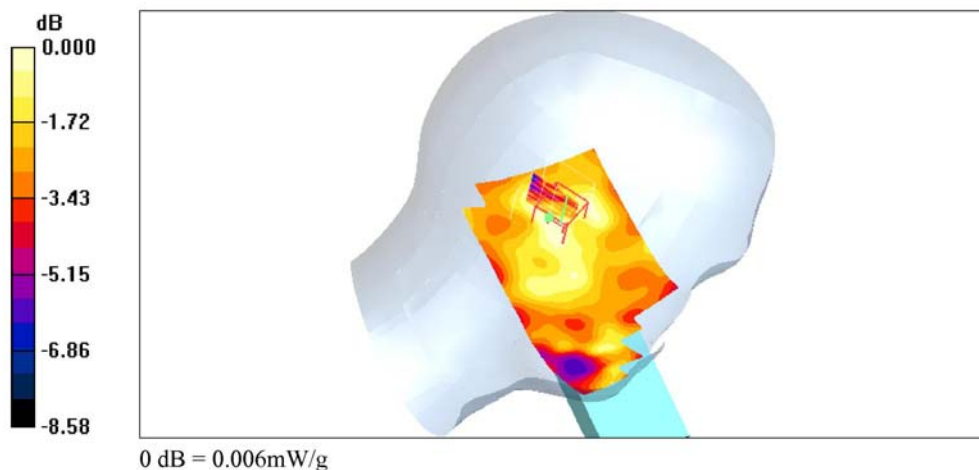
SAR(1 g) = 0.00591 mW/g; SAR(10 g) = 0.00424 mW/g

Warning: Maximum averaged SAR over 10 g is located on the boundary of the measurement cube. This cube might not incorporate the absolute averaged SAR. Please consider a refinement of the Area Scan measurement.

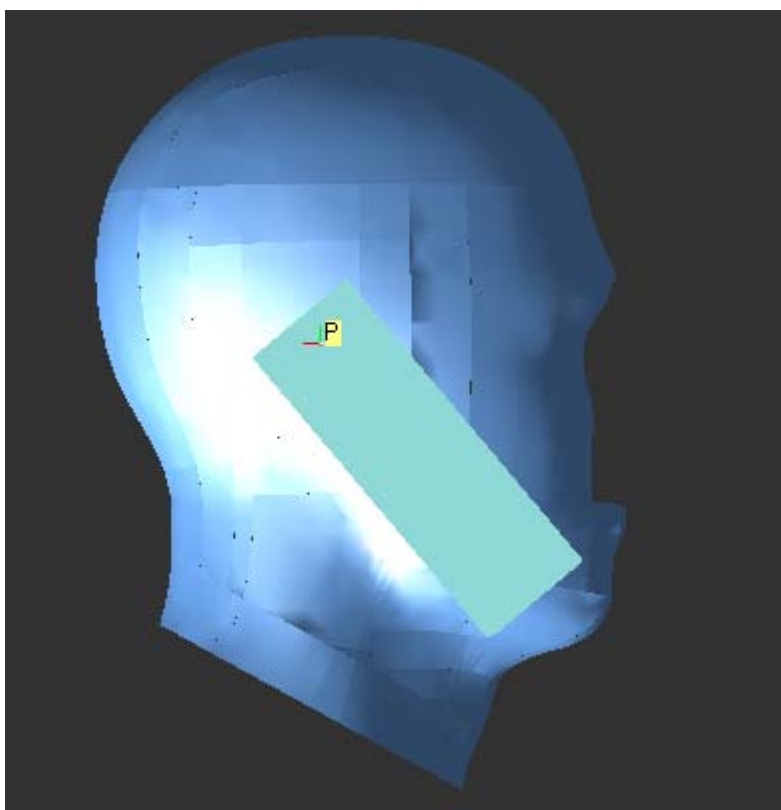
Maximum value of SAR (measured) = 0.006 mW/g

LT-MID/Area Scan (61x131x1): Measurement grid: dx=15mm, dy=15mm

Maximum value of SAR (interpolated) = 0.006 mW/g



Right Head



Right Cheek

Date/Time: 10/30/2007 11:20:26 AM

Test Laboratory: Electronics Testing Center, Taiwan

DUT: DECT Phone; Type: PP; Serial: 25250XXX-A

Communication System: US DECT-1900; Frequency: 1925 MHz; Duty Cycle: 1:24
Medium parameters used: $f = 1925$ MHz; $\sigma = 1.44$ mho/m; $\epsilon_r = 38.6$; $\rho = 1000$ kg/m³
Air temperature: 24 degC; Liquid temperature: 21.6 degC;
Phantom section: Right Section

DASY4 Configuration:

- Probe: EX3DV4 - SN3555; ConvF(6.61, 6.61, 6.61); Calibrated: 9/26/2007
- Sensor-Surface: 4mm (Mechanical Surface Detection)
- Electronics: DAE4 Sn629;
- Phantom: SAM 12-2; Type: SAM4.0; Serial: TP-1347
- Measurement SW: DASY4, V4.6 Build 23; Postprocessing SW: SEMCAD, V1.8 Build 160

RC-MID/Zoom Scan (5x5x7)/Cube 0: Measurement grid: dx=8mm, dy=8mm, dz=5mm

Reference Value = 1.89 V/m; Power Drift = -0.169 dB

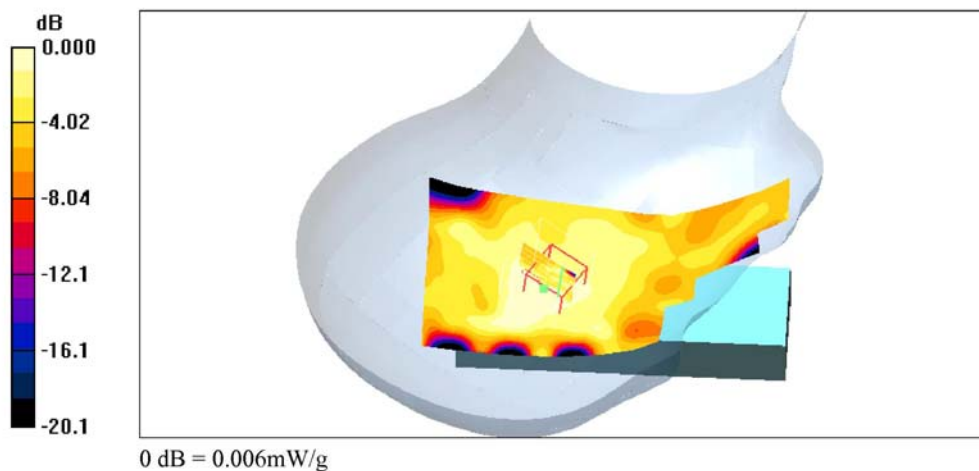
Peak SAR (extrapolated) = 0.010 W/kg

SAR(1 g) = 0.00557 mW/g; SAR(10 g) = 0.004 mW/g

Maximum value of SAR (measured) = 0.006 mW/g

RC-MID/Area Scan (61x131x1): Measurement grid: dx=15mm, dy=15mm

Maximum value of SAR (interpolated) = 0.006 mW/g



Right Tilted

Date/Time: 10/30/2007 11:30:14 AM

Test Laboratory: Electronics Testing Center, Taiwan

DUT: DECT Phone; Type: PP; Serial: 25250XXX-A

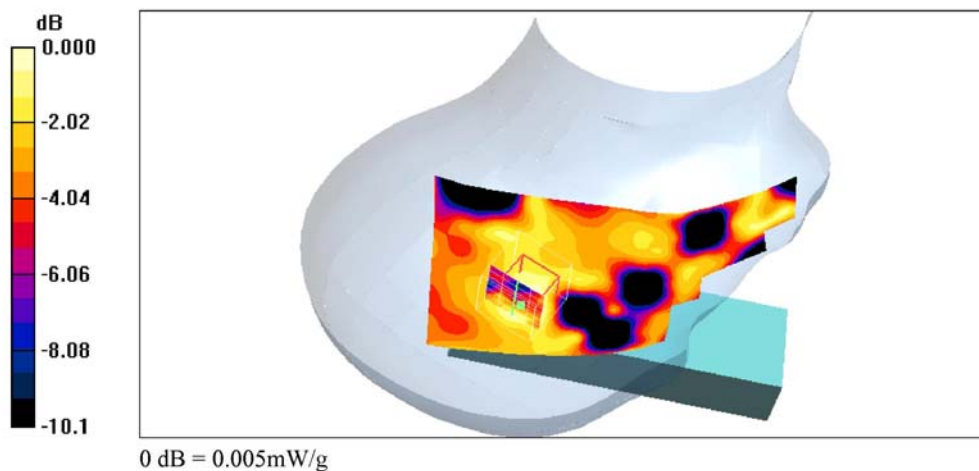
Communication System: US DECT-1900; Frequency: 1925 MHz; Duty Cycle: 1:24
Medium parameters used: $f = 1925$ MHz; $\sigma = 1.44$ mho/m; $\epsilon_r = 38.6$; $\rho = 1000$ kg/m³
Air temperature: 24 degC; Liquid temperature: 21.6 degC;
Phantom section: Right Section

DASY4 Configuration:

- Probe: EX3DV4 - SN3555; ConvF(6.61, 6.61, 6.61); Calibrated: 9/26/2007
- Sensor-Surface: 4mm (Mechanical Surface Detection)
- Electronics: DAE4 Sn629;
- Phantom: SAM 12-2; Type: SAM4.0; Serial: TP-1347
- Measurement SW: DASY4, V4.6 Build 23; Postprocessing SW: SEMCAD, V1.8 Build 160

RT-MID/Area Scan (61x131x1): Measurement grid: $dx=15$ mm, $dy=15$ mm
Maximum value of SAR (interpolated) = 0.006 mW/g

RT-MID/Zoom Scan (5x5x7)/Cube 0: Measurement grid: $dx=8$ mm, $dy=8$ mm, $dz=5$ mm
Reference Value = 1.37 V/m; Power Drift = -0.140 dB
Peak SAR (extrapolated) = 0.008 W/kg
SAR(1 g) = 0.00461 mW/g; SAR(10 g) = 0.00323 mW/g
Maximum value of SAR (measured) = 0.005 mW/g



Left Cheek

Date/Time: 10/30/2007 12:56:07 PM

Test Laboratory: Electronics Testing Center, Taiwan

DUT: DECT Phone; Type: PP; Serial: 25250XXX-A

Communication System: US DECT-1900; Frequency: 1928.5 MHz; Duty Cycle: 1:24
Medium parameters used: $f = 1928.5$ MHz; $\sigma = 1.44$ mho/m; $\epsilon_r = 38.6$; $\rho = 1000$ kg/m³
Air temperature: 24 degC; Liquid temperature: 21.6 degC;
Phantom section: Left Section

DASY4 Configuration:

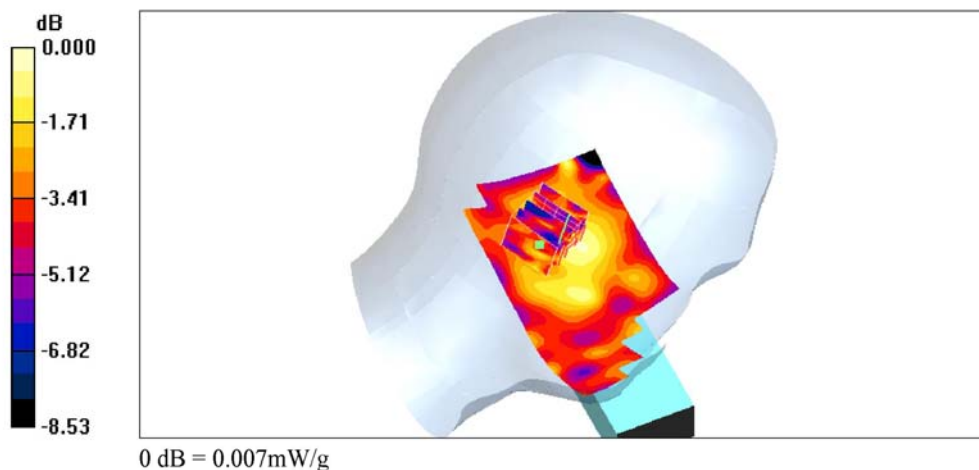
- Probe: EX3DV4 - SN3555; ConvF(6.61, 6.61, 6.61); Calibrated: 9/26/2007
- Sensor-Surface: 4mm (Mechanical Surface Detection)
- Electronics: DAE4 Sn629;
- Phantom: SAM 12-2; Type: SAM4.0; Serial: TP-1347
- Measurement SW: DASY4, V4.6 Build 23; Postprocessing SW: SEMCAD, V1.8 Build 160

LC-HIGH/Area Scan (61x131x1): Measurement grid: dx=15mm, dy=15mm
Maximum value of SAR (interpolated) = 0.006 mW/g

LC-HIGH/Zoom Scan (5x5x7)/Cube 0: Measurement grid: dx=8mm, dy=8mm, dz=5mm
Reference Value = 2.08 V/m; Power Drift = -0.177 dB
Peak SAR (extrapolated) = 0.009 W/kg
SAR(1 g) = 0.00618 mW/g; SAR(10 g) = 0.00429 mW/g

Warning: Maximum averaged SAR over 1 g is located on the boundary of the measurement cube. This cube might not incorporate the absolute averaged SAR. Please consider a refinement of the Area Scan measurement. Maximum averaged SAR over 10 g is located on the boundary of the measurement cube. This cube might not incorporate the absolute averaged SAR. Please consider a refinement of the Area Scan measurement.

Maximum value of SAR (measured) = 0.007 mW/g



Left Cheek

Date/Time: 10/30/2007 1:40:49 PM

Test Laboratory: Electronics Testing Center, Taiwan

DUT: DECT Phone; Type: PP; Serial: 25250XXX-A

Communication System: US DECT-1900; Frequency: 1921.5 MHz; Duty Cycle: 1:24
Medium parameters used: $f = 1921.5$ MHz; $\sigma = 1.44$ mho/m; $\epsilon_r = 38.7$; $\rho = 1000$ kg/m³
Air temperature: 24 degC; Liquid temperature: 21.6 degC;
Phantom section: Left Section

DASY4 Configuration:

- Probe: EX3DV4 - SN3555; ConvF(6.61, 6.61, 6.61); Calibrated: 9/26/2007
- Sensor-Surface: 4mm (Mechanical Surface Detection)
- Electronics: DAE4 Sn629;
- Phantom: SAM 12-2; Type: SAM4.0; Serial: TP-1347
- Measurement SW: DASY4, V4.6 Build 23; Postprocessing SW: SEMCAD, V1.8 Build 160

LC-LOW/Zoom Scan (5x5x7)/Cube 0: Measurement grid: dx=8mm, dy=8mm, dz=5mm

Reference Value = 1.95 V/m; Power Drift = -0.025 dB

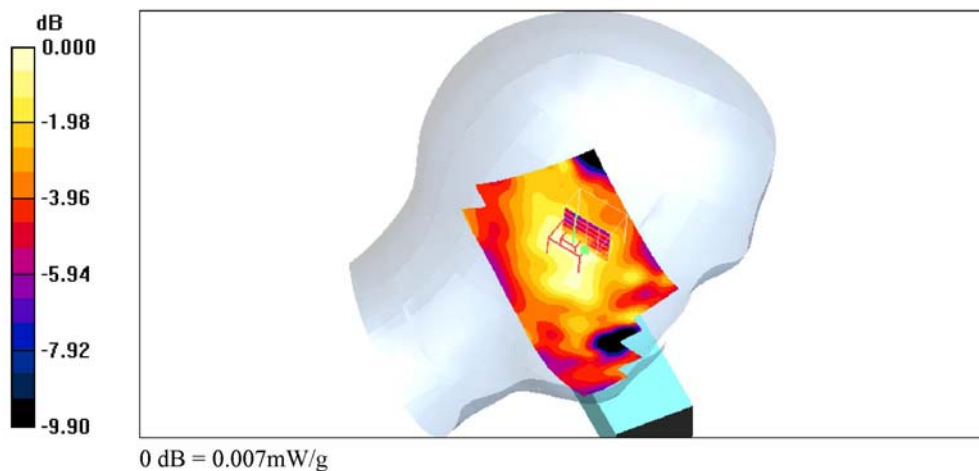
Peak SAR (extrapolated) = 0.011 W/kg

SAR(1 g) = 0.00618 mW/g; SAR(10 g) = 0.00437 mW/g

Maximum value of SAR (measured) = 0.007 mW/g

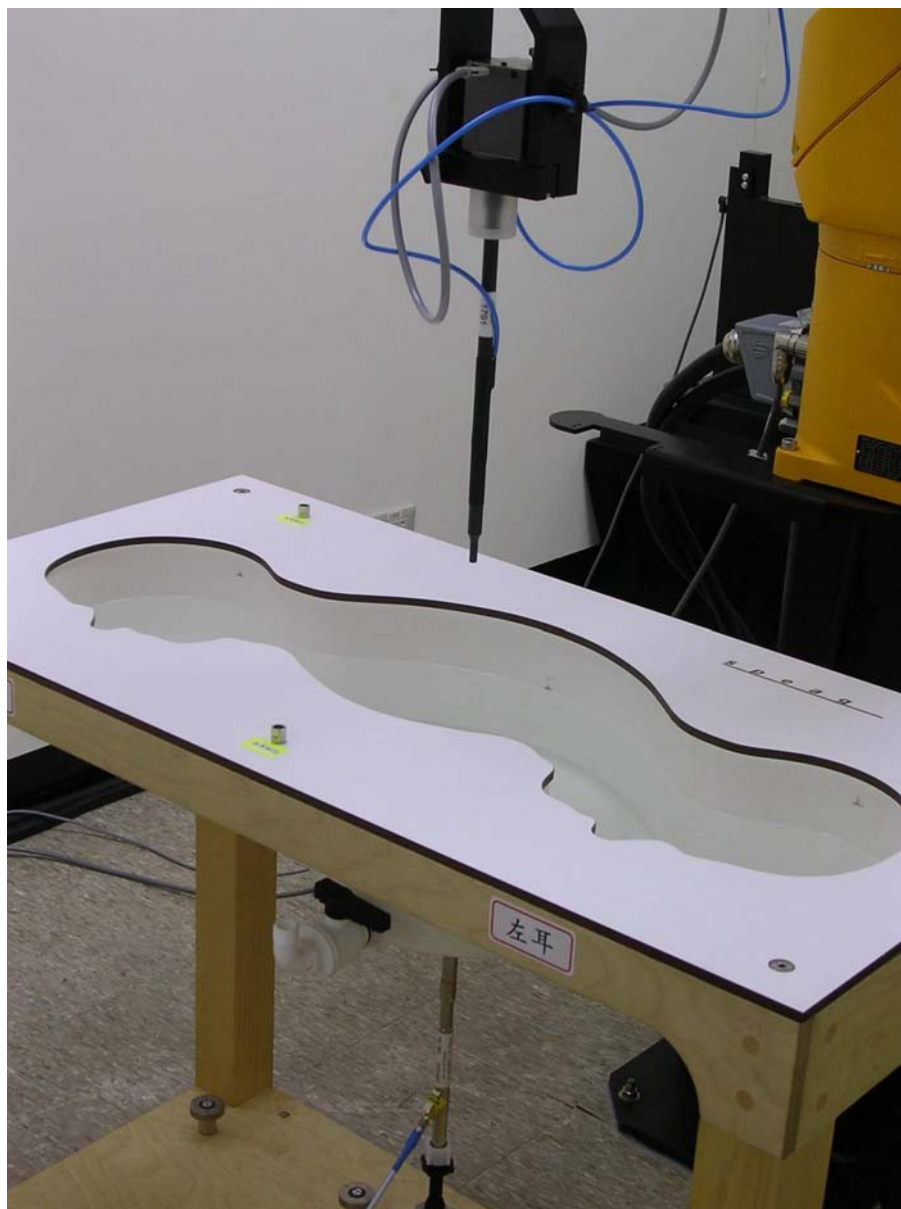
LC-LOW/Area Scan (61x131x1): Measurement grid: dx=15mm, dy=15mm

Maximum value of SAR (interpolated) = 0.007 mW/g



System Performance Check

Body



Date/Time: 10/31/2007 8:54:35 AM

Test Laboratory: Electronics Testing Center, Taiwan

DUT: Dipole 1900 MHz; Type: D1900V2; Serial: D1900V2 - SN:xxx

Communication System: CW; Frequency: 1900 MHz; Duty Cycle: 1:1

Medium parameters used: $f = 1900$ MHz; $\sigma = 1.44$ mho/m; $\epsilon_r = 55.5$; $\rho = 1000$ kg/m³

Air temperature: 24 degC; Liquid temperature: 21.6 degC;

Phantom section: Flat Section

DASY4 Configuration:

- Probe: EX3DV4 - SN3555; ConvF(6.5, 6.5, 6.5); Calibrated: 9/26/2007

- Sensor-Surface: 4mm (Mechanical Surface Detection)

- Electronics: DAE4 Sn629;

- Phantom: SAM 12-2; Type: SAM4.0; Serial: TP-1347

- Measurement SW: DASY4, V4.6 Build 23; Postprocessing SW: SEMCAD, V1.8 Build 160

SPC/Zoom Scan (5x5x7)/Cube 0: Measurement grid: dx=8mm, dy=8mm, dz=5mm

Reference Value = 89.2 V/m; Power Drift = -0.008 dB

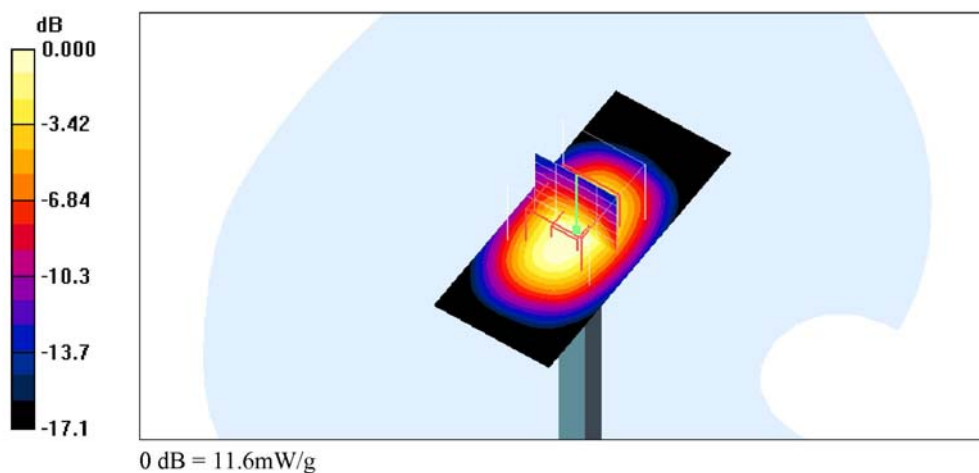
Peak SAR (extrapolated) = 18.5 W/kg

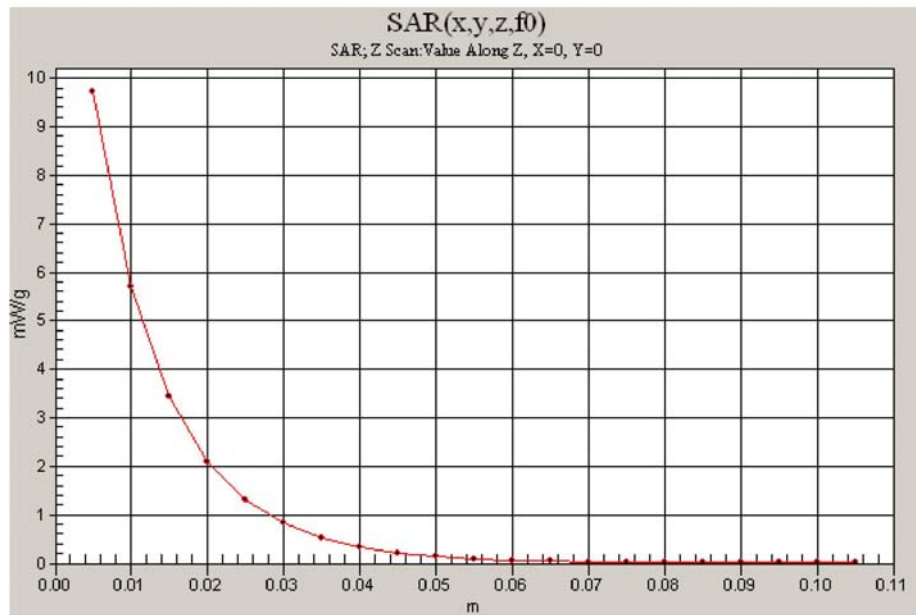
SAR(1 g) = 10.3 mW/g; SAR(10 g) = 5.39 mW/g

Maximum value of SAR (measured) = 11.6 mW/g

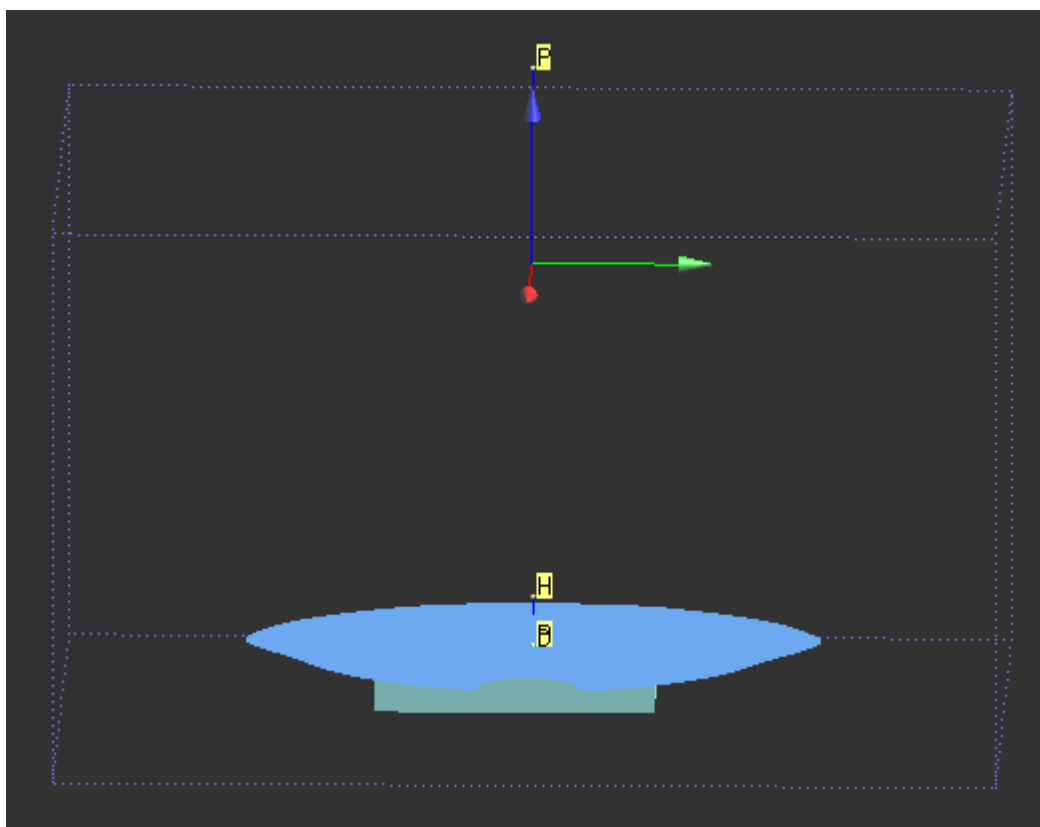
SPC/Area Scan (31x71x1): Measurement grid: dx=15mm, dy=15mm

Maximum value of SAR (interpolated) = 12.8 mW/g





Body



Date/Time: 10/31/2007 10:08:09 AM

Test Laboratory: Electronics Testing Center, Taiwan

DUT: DECT Phone; Type: PP; Serial: 25250XXX-A

Communication System: US DECT-1900; Frequency: 1925 MHz; Duty Cycle: 1:24
Medium parameters used: $f = 1925$ MHz; $\sigma = 1.47$ mho/m; $\epsilon_r = 55.4$; $\rho = 1000$ kg/m³
Air temperature: 24 degC; Liquid temperature: 21.5 degC;
Phantom section: Flat Section

DASY4 Configuration:

- Probe: EX3DV4 - SN3555; ConvF(6.5, 6.5, 6.5); Calibrated: 9/26/2007
- Sensor-Surface: 4mm (Mechanical Surface Detection)
- Electronics: DAE4 Sn629;
- Phantom: SAM 12-2; Type: SAM4.0; Serial: TP-1347
- Measurement SW: DASY4, V4.6 Build 23; Postprocessing SW: SEMCAD, V1.8 Build 160

Rear-MID/Zoom Scan (5x5x7)/Cube 0: Measurement grid: dx=8mm, dy=8mm, dz=5mm

Reference Value = 1.34 V/m; Power Drift = -0.086 dB

Peak SAR (extrapolated) = 0.032 W/kg

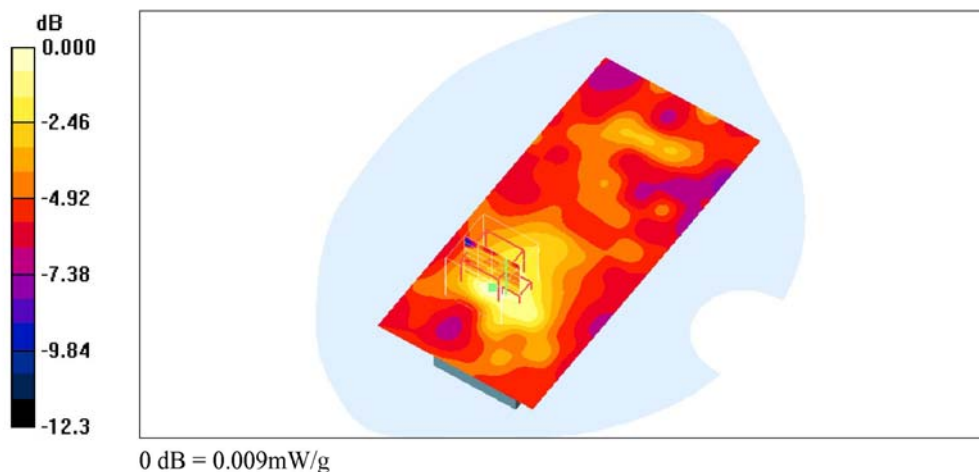
SAR(1 g) = 0.00968 mW/g; SAR(10 g) = 0.00229 mW/g

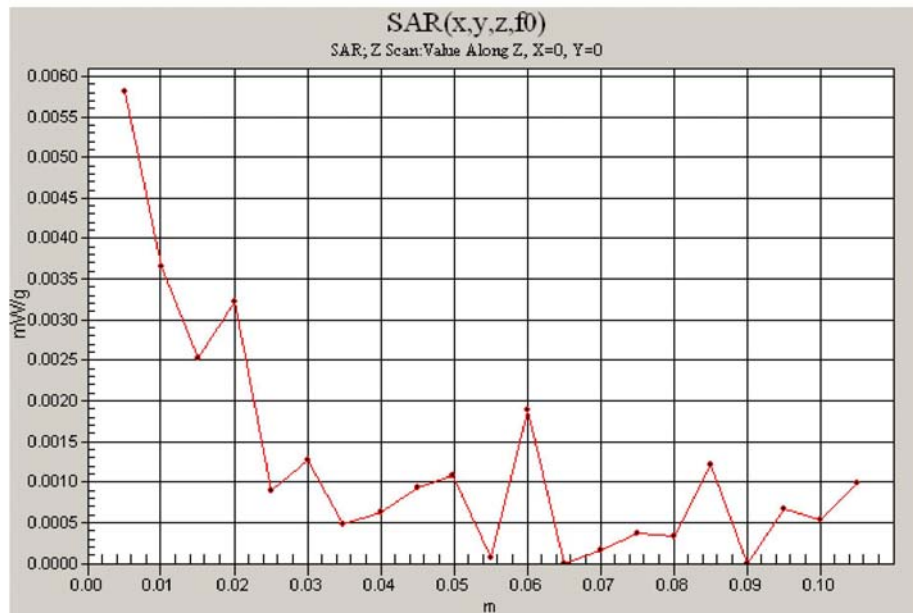
Warning: Maximum averaged SAR over 1 g is located on the boundary of the measurement cube. This cube might not incorporate the absolute averaged SAR. Please consider a refinement of the Area Scan measurement. Maximum averaged SAR over 10 g is located on the boundary of the measurement cube. This cube might not incorporate the absolute averaged SAR. Please consider a refinement of the Area Scan measurement.

Maximum value of SAR (measured) = 0.009 mW/g

Rear-MID/Area Scan (61x131x1): Measurement grid: dx=15mm, dy=15mm

Maximum value of SAR (interpolated) = 0.009 mW/g





Date/Time: 10/31/2007 10:47:21 AM

Test Laboratory: Electronics Testing Center, Taiwan

DUT: DECT Phone; Type: PP; Serial: 25250XXX-A

Communication System: US DECT-1900; Frequency: 1928.5 MHz; Duty Cycle: 1:24
Medium parameters used: $f = 1928.5$ MHz; $\sigma = 1.48$ mho/m; $\epsilon_r = 55.4$; $\rho = 1000$ kg/m³
Air temperature: 24 degC; Liquid temperature: 21.5 degC;
Phantom section: Flat Section

DASY4 Configuration:

- Probe: EX3DV4 - SN3555; ConvF(6.5, 6.5, 6.5); Calibrated: 9/26/2007
- Sensor-Surface: 4mm (Mechanical Surface Detection)
- Electronics: DAE4 Sn629;
- Phantom: SAM 12-2; Type: SAM4.0; Serial: TP-1347
- Measurement SW: DASY4, V4.6 Build 23; Postprocessing SW: SEMCAD, V1.8 Build 160

Rear-HIGH/Zoom Scan (5x5x7)/Cube 0: Measurement grid: dx=8mm, dy=8mm, dz=5mm

Reference Value = 1.32 V/m; Power Drift = -0.014 dB

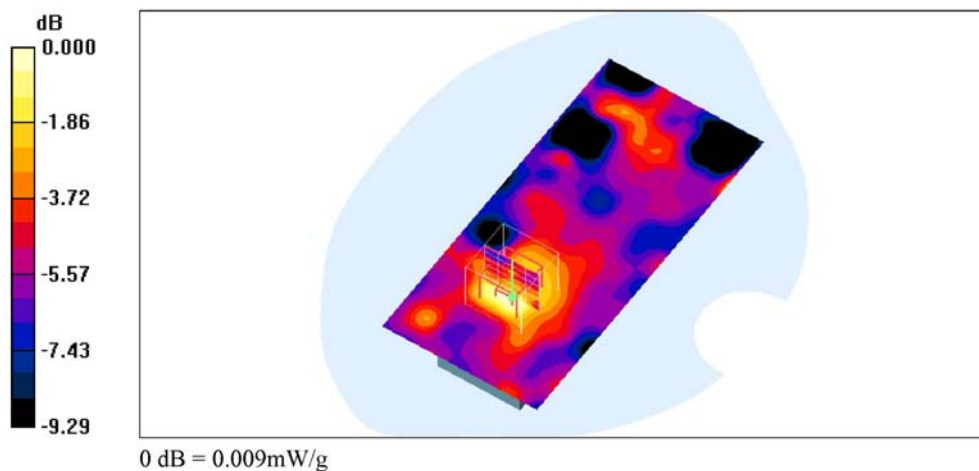
Peak SAR (extrapolated) = 0.012 W/kg

SAR(1 g) = 0.00721 mW/g; SAR(10 g) = 0.00482 mW/g

Maximum value of SAR (measured) = 0.009 mW/g

Rear-HIGH/Area Scan (61x131x1): Measurement grid: dx=15mm, dy=15mm

Maximum value of SAR (interpolated) = 0.009 mW/g



Date/Time: 10/31/2007 11:05:21 AM

Test Laboratory: Electronics Testing Center, Taiwan

DUT: DECT Phone; Type: PP; Serial: 25250XXX-A

Communication System: US DECT-1900; Frequency: 1921.5 MHz; Duty Cycle: 1:24
Medium parameters used: $f = 1921.5$ MHz; $\sigma = 1.47$ mho/m; $\epsilon_r = 55.4$; $\rho = 1000$ kg/m³
Air temperature: 24 degC; Liquid temperature: 21.5 degC;
Phantom section: Flat Section

DASY4 Configuration:

- Probe: EX3DV4 - SN3555; ConvF(6.5, 6.5, 6.5); Calibrated: 9/26/2007
- Sensor-Surface: 4mm (Mechanical Surface Detection)
- Electronics: DAE4 Sn629;
- Phantom: SAM 12-2; Type: SAM4.0; Serial: TP-1347
- Measurement SW: DASY4, V4.6 Build 23; Postprocessing SW: SEMCAD, V1.8 Build 160

Rear-LOW/Zoom Scan (5x5x7)/Cube 0: Measurement grid: dx=8mm, dy=8mm, dz=5mm

Reference Value = 1.12 V/m; Power Drift = 0.087 dB

Peak SAR (extrapolated) = 0.012 W/kg

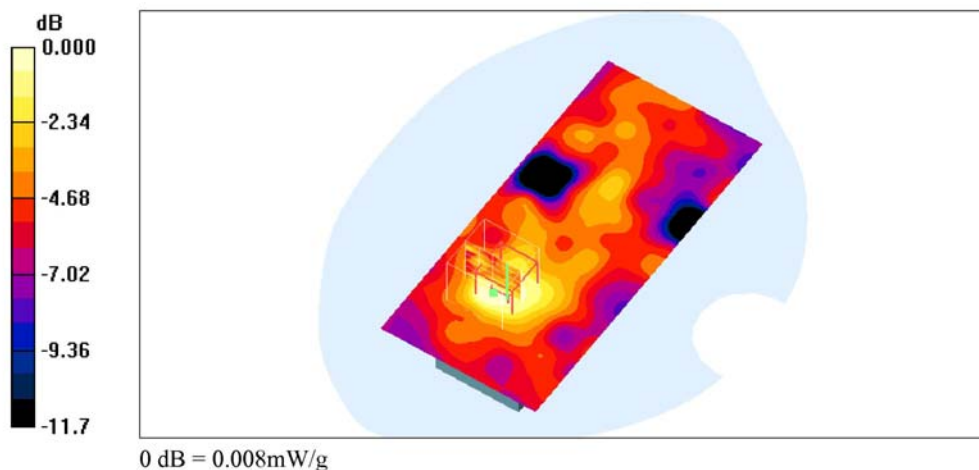
SAR(1 g) = 0.00737 mW/g; SAR(10 g) = 0.00359 mW/g

Warning: Maximum averaged SAR over 10 g is located on the boundary of the measurement cube. This cube might not incorporate the absolute averaged SAR. Please consider a refinement of the Area Scan measurement.

Maximum value of SAR (measured) = 0.008 mW/g

Rear-LOW/Area Scan (61x131x1): Measurement grid: dx=15mm, dy=15mm

Maximum value of SAR (interpolated) = 0.009 mW/g



ANNEX C: DIPOLE CERTIFICATE

Calibration Laboratory of
Schmid & Partner
Engineering AG
Zeughausstrasse 43, 8004 Zurich, Switzerland



S Schweizerischer Kalibrierdienst
C Service suisse d'étalonnage
S Servizio svizzero di taratura
S Swiss Calibration Service

Accredited by the Swiss Federal Office of Metrology and Accreditation
The Swiss Accreditation Service is one of the signatories to the EA
Multilateral Agreement for the recognition of calibration certificates

Accreditation No.: **SCS 108**

Client **ETC (Auden)**

Certificate No: **D1900V2-5d054_Oct06**

CALIBRATION CERTIFICATE

Object **D1900V2 - SN: 5d054**

Calibration procedure(s) **QA CAL-05.v6**
Calibration procedure for dipole validation kits

Calibration date: **October 17, 2006**

Condition of the calibrated item **In Tolerance**

This calibration certificate documents the traceability to national standards, which realize the physical units of measurements (SI).
The measurements and the uncertainties with confidence probability are given on the following pages and are part of the certificate.

All calibrations have been conducted in the closed laboratory facility: environment temperature $(22 \pm 3)^{\circ}\text{C}$ and humidity $< 70\%$.

Calibration Equipment used (M&TE critical for calibration)

Primary Standards	ID #	Cal Date (Calibrated by, Certificate No.)	Scheduled Calibration
Power meter EPM-442A	GB37480704	03-Oct-06 (METAS, No. 217-00608)	Oct-07
Power sensor HP 8481A	US37292783	03-Oct-06 (METAS, No. 217-00608)	Oct-07
Reference 20 dB Attenuator	SN: 5086 (20g)	10-Aug-06 (METAS, No 217-00591)	Aug-07
Reference 10 dB Attenuator	SN: 5047.2 (10r)	10-Aug-06 (METAS, No 217-00591)	Aug-07
Reference Probe ET3DV6	SN: 1507	28-Oct-05 (SPEAG, No. ET3-1507_Oct05)	Oct-06
Reference Probe ES3DV3	SN: 3025	28-Oct-05 (SPEAG, No. ES3-3025_Oct05)	Oct-06
DAE4	SN: 601	15-Dec-05 (SPEAG, No. DAE4-601_Dec05)	Dec-06
Secondary Standards	ID #	Check Date (in house)	Scheduled Check
Power sensor HP 8481A	MY41092317	18-Oct-02 (SPEAG, in house check Oct-05)	In house check: Oct-07
RF generator Agilent E4421B	MY41000675	11-May-05 (SPEAG, in house check Nov-05)	In house check: Nov-07
Network Analyzer HP 8753E	US37390585 S4206	18-Oct-01 (SPEAG, in house check Nov-05)	In house check: Nov-06

Calibrated by:	Name Mike Meili	Function Laboratory Technician	Signature
Approved by:	Katja Pokovic	Technical Manager	

Issued: October 18, 2006

This calibration certificate shall not be reproduced except in full without written approval of the laboratory.

Certificate No: D1900V2-5d054_Oct06

Page 1 of 9

**Calibration Laboratory of
Schmid & Partner
Engineering AG**
Zeughausstrasse 43, 8004 Zurich, Switzerland



S Schweizerischer Kalibrierdienst
C Service suisse d'étalonnage
S Servizio svizzero di taratura
S Swiss Calibration Service

Accredited by the Swiss Federal Office of Metrology and Accreditation
The Swiss Accreditation Service is one of the signatories to the EA
Multilateral Agreement for the recognition of calibration certificates

Accreditation No.: **SCS 108**

Glossary:

TSL	tissue simulating liquid
ConvF	sensitivity in TSL / NORM x,y,z
N/A	not applicable or not measured

Calibration is Performed According to the Following Standards:

- IEEE Std 1528-2003, "IEEE Recommended Practice for Determining the Peak Spatial-Averaged Specific Absorption Rate (SAR) in the Human Head from Wireless Communications Devices: Measurement Techniques", December 2003
- CENELEC EN 50361, "Basic standard for the measurement of Specific Absorption Rate related to human exposure to electromagnetic fields from mobile phones (300 MHz - 3 GHz), July 2001
- Federal Communications Commission Office of Engineering & Technology (FCC OET), "Evaluating Compliance with FCC Guidelines for Human Exposure to Radiofrequency Electromagnetic Fields; Additional Information for Evaluating Compliance of Mobile and Portable Devices with FCC Limits for Human Exposure to Radiofrequency Emissions", Supplement C (Edition 01-01) to Bulletin 65

Additional Documentation:

- DASY4 System Handbook

Methods Applied and Interpretation of Parameters:

- Measurement Conditions:** Further details are available from the Validation Report at the end of the certificate. All figures stated in the certificate are valid at the frequency indicated.
- Antenna Parameters with TSL:** The dipole is mounted with the spacer to position its feed point exactly below the center marking of the flat phantom section, with the arms oriented parallel to the body axis.
- Feed Point Impedance and Return Loss:** These parameters are measured with the dipole positioned under the liquid filled phantom. The impedance stated is transformed from the measurement at the SMA connector to the feed point. The Return Loss ensures low reflected power. No uncertainty required.
- Electrical Delay:** One-way delay between the SMA connector and the antenna feed point. No uncertainty required.
- SAR measured:** SAR measured at the stated antenna input power.
- SAR normalized:** SAR as measured, normalized to an input power of 1 W at the antenna connector.
- SAR for nominal TSL parameters:** The measured TSL parameters are used to calculate the nominal SAR result.

Measurement Conditions

DASY system configuration, as far as not given on page 1.

DASY Version	DASY4	V4.7
Extrapolation	Advanced Extrapolation	
Phantom	Modular Flat Phantom V5.0	
Distance Dipole Center - TSL	10 mm	with Spacer
Zoom Scan Resolution	dx, dy, dz = 5 mm	
Frequency	1900 MHz \pm 1 MHz	

Head TSL parameters

The following parameters and calculations were applied.

	Temperature	Permittivity	Conductivity
Nominal Head TSL parameters	22.0 °C	40.0	1.40 mho/m
Measured Head TSL parameters	(22.0 \pm 0.2) °C	39.3 \pm 6 %	1.42 mho/m \pm 6 %
Head TSL temperature during test	(20.5 \pm 0.2) °C	----	----

SAR result with Head TSL

SAR averaged over 1 cm ³ (1 g) of Head TSL	condition	
SAR measured	250 mW input power	9.56 mW / g
SAR normalized	normalized to 1W	38.2 mW / g
SAR for nominal Head TSL parameters ¹	normalized to 1W	37.6 mW / g \pm 17.0 % (k=2)

SAR averaged over 10 cm ³ (10 g) of Head TSL	Condition	
SAR measured	250 mW input power	5.07 mW / g
SAR normalized	normalized to 1W	20.3 mW / g
SAR for nominal Head TSL parameters ¹	normalized to 1W	20.1 mW / g \pm 16.5 % (k=2)

¹ Correction to nominal TSL parameters according to d), chapter "SAR Sensitivities"

Body TSL parameters

The following parameters and calculations were applied.

	Temperature	Permittivity	Conductivity
Nominal Body TSL parameters	22.0 °C	53.3	1.52 mho/m
Measured Body TSL parameters	(22.0 ± 0.2) °C	52.4 ± 6 %	1.54 mho/m ± 6 %
Body TSL temperature during test	(22.0 ± 0.2) °C	----	----

SAR result with Body TSL

SAR averaged over 1 cm ³ (1 g) of Body TSL	Condition	
SAR measured	250 mW input power	9.60 mW / g
SAR normalized	normalized to 1W	38.4 mW / g
SAR for nominal Body TSL parameters ²	normalized to 1W	37.7 mW / g ± 17.0 % (k=2)

SAR averaged over 10 cm ³ (10 g) of Body TSL	condition	
SAR measured	250 mW input power	5.08 mW / g
SAR normalized	normalized to 1W	20.3 mW / g
SAR for nominal Body TSL parameters ²	normalized to 1W	20.1 mW / g ± 16.5 % (k=2)

² Correction to nominal TSL parameters according to d), chapter "SAR Sensitivities"

Appendix

Antenna Parameters with Head TSL

Impedance, transformed to feed point	$56.9 \Omega + 3.5 j\Omega$
Return Loss	- 22.8 dB

Antenna Parameters with Body TSL

Impedance, transformed to feed point	$51.8 \Omega + 5.1 j\Omega$
Return Loss	- 25.5 dB

General Antenna Parameters and Design

Electrical Delay (one direction)	1.198 ns
----------------------------------	----------

After long term use with 100W radiated power, only a slight warming of the dipole near the feedpoint can be measured.

The dipole is made of standard semirigid coaxial cable. The center conductor of the feeding line is directly connected to the second arm of the dipole. The antenna is therefore short-circuited for DC-signals.
No excessive force must be applied to the dipole arms, because they might bend or the soldered connections near the feedpoint may be damaged.

Additional EUT Data

Manufactured by	SPEAG
Manufactured on	March 19, 2004

DASY4 Validation Report for Head TSL

Date/Time: 11.10.2006 15:17:05

Test Laboratory: SPEAG, Zurich, Switzerland

DUT: Dipole 1900 MHz; Type: D1900V2; Serial: D1900V2 - SN:5d054

Communication System: CW; Frequency: 1900 MHz; Duty Cycle: 1:1

Medium: HSL U10 BB;

Medium parameters used: $f = 1900 \text{ MHz}$; $\sigma = 1.42 \text{ mho/m}$; $\epsilon_r = 39.3$; $\rho = 1000 \text{ kg/m}^3$

Phantom section: Flat Section

Measurement Standard: DASY4 (High Precision Assessment)

DASY4 Configuration:

- Probe: ET3DV6 - SN1507 (HF); ConvF(4.74, 4.74, 4.74); Calibrated: 28.10.2005
- Sensor-Surface: 4mm (Mechanical Surface Detection)
- Electronics: DAE4 Sn601; Calibrated: 15.12.2005
- Phantom: Flat Phantom 5.0 (front); Type: QD000P50AA
- Measurement SW: DASY4, V4.7 Build 44; Postprocessing SW: SEMCAD, V1.8 Build 171

Pin = 250 mW; d = 10 mm/Zoom Scan (7x7x7)/Cube 0:

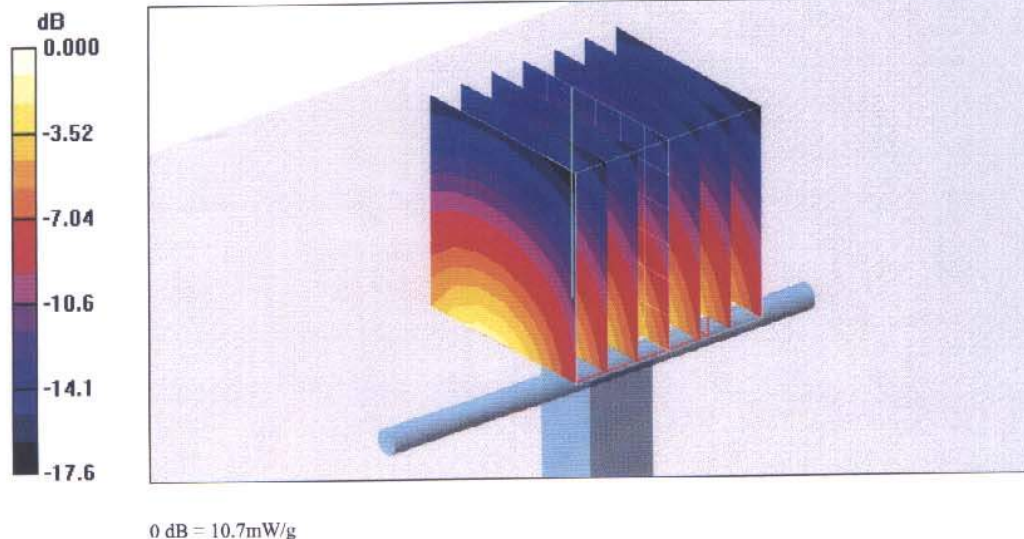
Measurement grid: $dx=5\text{mm}$, $dy=5\text{mm}$, $dz=5\text{mm}$

Reference Value = 90.1 V/m; Power Drift = 0.042 dB

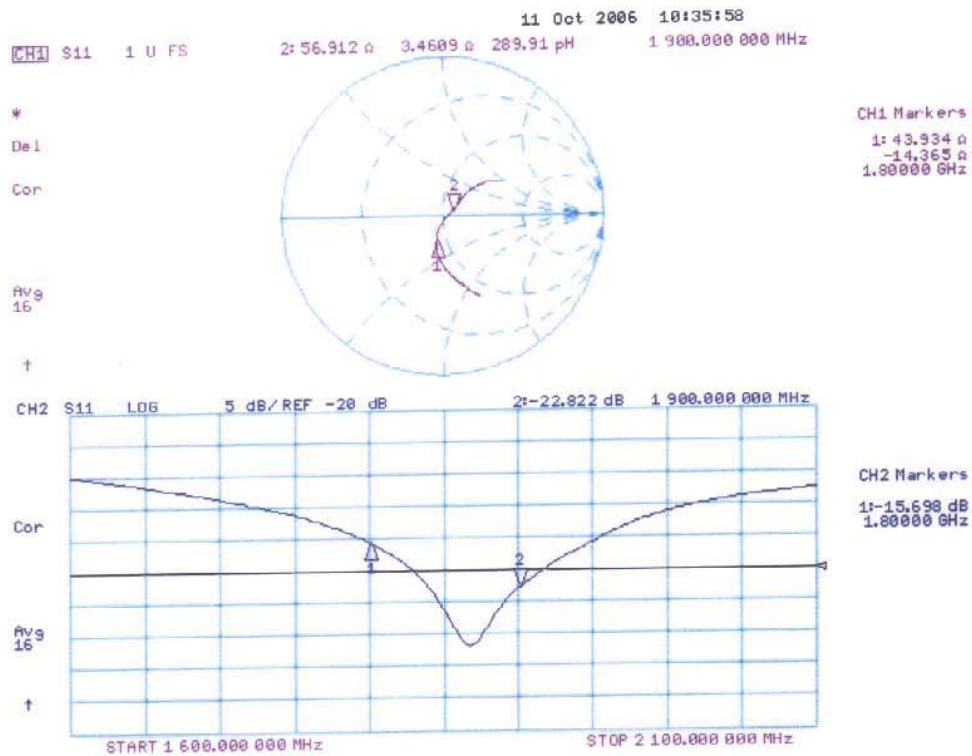
Peak SAR (extrapolated) = 16.3 W/kg

SAR(1 g) = 9.56 mW/g; SAR(10 g) = 5.07 mW/g

Maximum value of SAR (measured) = 10.7 mW/g



Impedance Measurement Plot for Head TSL



DASY4 Validation Report for Body TSL

Date/Time: 17.10.2006 15:56:11

Test Laboratory: SPEAG, Zurich, Switzerland

DUT: Dipole 1900 MHz; Type: D1900V2; Serial: D1900V2 - SN:5d054

Communication System: CW; Frequency: 1900 MHz; Duty Cycle: 1:1

Medium: MSL U10;

Medium parameters used: $f = 1900$ MHz; $\sigma = 1.54$ mho/m; $\epsilon_r = 52.4$; $\rho = 1000$ kg/m³

Phantom section: Flat Section

Measurement Standard: DASY4 (High Precision Assessment)

DASY4 Configuration:

- Probe: ET3DV6 - SN1507 (HF); ConvF(4.3, 4.3, 4.3); Calibrated: 28.10.2005
- Sensor-Surface: 4mm (Mechanical Surface Detection)
- Electronics: DAE4 Sn601; Calibrated: 15.12.2005
- Phantom: Flat Phantom 5.0 (back); Type: QD000P50AA
- Measurement SW: DASY4, V4.7 Build 44; Postprocessing SW: SEMCAD, V1.8 Build 171

Pin = 250 mW; d = 10 mm/Zoom Scan (7x7x7)/Cube 0:

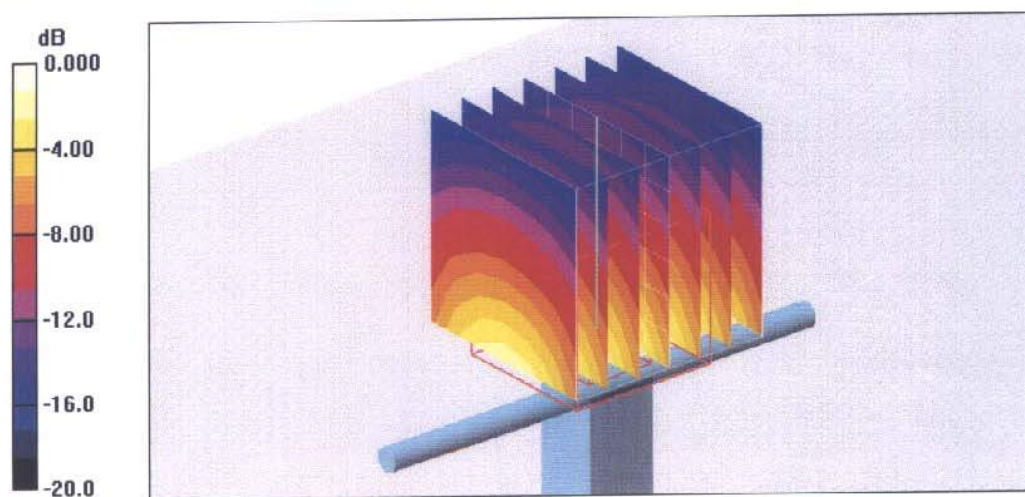
Measurement grid: dx=5mm, dy=5mm, dz=5mm

Reference Value = 90.4 V/m; Power Drift = -0.027 dB

Peak SAR (extrapolated) = 16.8 W/kg

SAR(1 g) = 9.6 mW/g; SAR(10 g) = 5.08 mW/g

Maximum value of SAR (measured) = 10.9 mW/g



Impedance Measurement Plot for Body TSL

