



EWA322T

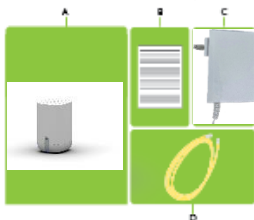
Quick Setup Guide

1. Before you start

Carefully read the **Safety Instructions and Regulatory Notices** document included in your package before continuing with the installation of your Ethernet gateway.

2. Check the content of your package

Your package contains the following items:



Item	Description
A	One EWA322T Ethernet gateway
B	User Documentation (this Quick Setup Guide, Safety Instructions & Regulatory Notices...). Other additional documents may be included.
C	One power adapter (type may differ depending on region)
D	One white Ethernet cable (with yellow connectors)

3. Model information

I/O of EWA322T is shown in below picture.



Item	Description
DC-in	PSU Plug in.
Reset	Recessed button to push. Refer 7.2 for How-to.
ETH port	4 1G LAN port in yellow; 1 2.5G WAN port in RED.
USB	One USB 2.0 port.

4. Connect your Ethernet gateway to the Broadband service

Choose your installation method

To connect your Ethernet gateway to the Internet you can:

- Place your Ethernet gateway behind another Internet access device. In this setup your Ethernet gateway is used as **local Ethernet gateway**. Follow the instructions from “Connect as local Ethernet gateway” below.

Connect as local Ethernet gateway



- 1 Plug the Ethernet cable with the red connectors into the red Ethernet **WAN** port on your gateway.
- 2 Plug the other end of the Ethernet cable into the Ethernet port of your Internet access device.

4. Power on your Ethernet gateway



Plug the connector of the electric power supply adapter into the power inlet port of your Ethernet gateway. Plug the adapter into a nearby power outlet.

5. Connect your network devices

We recommend you to first connect one computer/tablet (if possible via a wired connection), then complete the rest of the procedure and as a final step connect the other devices.

5.1. Connect your wired (Ethernet) devices




If you want to connect a device using a wired (Ethernet) connection:

- 1 Take the white Ethernet cable.
- 2 Connect one end of the Ethernet cable to one of the yellow Ethernet ports of your Ethernet gateway.
- 3 Connect the other end of the Ethernet cable to your device.
- 4 Connect your other Ethernet devices.
- 5 We recommend you to first configure your Ethernet gateway (see “6. Configure your Ethernet gateway to your needs (optional)” on page 5) before connecting your Wi-Fi devices (see 5.2. Connect your Wi-Fi devices” on page 4).

5.2. Connect your Wi-Fi devices

Your Ethernet gateway has two Wi-Fi access points:

- The 5 GHz access point offers superior transfer rates, is less sensitive to interference and allows you to connect Wi-Fi 6E (IEEE802.11a/n/ac/ax) devices that support 5 GHz.

- The **2.4 GHz access point** allows you to connect Wi-Fi 6E (IEEE802.11b/g/n/ac/ax) devices. Use this access point for Wi-Fi devices that don't support 5 GHz.
-  Your Ethernet gateway supports band steering, a function that lets your Ethernet gateway automatically select the best access point for each of your connected Wi-Fi devices.

If band steering is enabled both access points will appear as one.

Wi-Fi settings label

The label of your Ethernet gateway provides useful information about your Wi-Fi network. Which is accessible through scanning of QRcode on label:

- The **Network Name**.




This name is used to identify your Wi-Fi network. Some use the term SSID instead.

Tips

To achieve optimal link quality:

- Always try to reduce the number of obstacles (especially walls) between your Wi-Fi devices to a minimum.
- Do not place your Wi-Fi devices in the neighbourhood of devices that cause interference (microwave ovens, cordless phones, baby monitors, etc.).

Connecting a Wi-Fi device using WPS Push Button Configuration (PBC)

- 1 Make sure that your Wi-Fi devices supports WPS PBC and you know how to start it. For more information, consult the documentation of your Wi-Fi device.
- 2 On your Ethernet gateway, briefly press the **WPS** () button and release it. The **WPS** () LED starts blinking blue slowly.
- 3 Within two minutes, start WPS PBC on your Wi-Fi device. You will probably have to do this in one of the following ways:
 - ③ Press a WPS () button on your Wi-Fi device.
 - ③ Start WPS (PBC) on the user interface of your Wi-Fi device.

- ③ Open a list of available networks and select the **Network Name** mentioned on the label of your gateway.

4 After a few seconds, your Wi-Fi device should be connected.



If the **WPS** (🔑) LED starts blinking fast, then your Ethernet gateway could not connect your Wi-Fi device. For more information, see “The WPS LED is blinking fast” on page 6. **Connecting a Wi-Fi device manually**
On your Wi-Fi device, proceed as follows:

- 1 Open the list of available Wi-Fi networks and select the entry that contains the **Network Name** from the label.
- 2 Your Wi-Fi device will ask you to enter the Wi-Fi key or password.

6. Configure your Ethernet gateway to your needs (optional)

The Ethernet gateway web interface allows you to configure your Ethernet gateway using your web browser. To access the gateway web user interface:

- 1 Browse to <http://192.168.1.1> on a computer or device that is currently connected to your Ethernet gateway (either wired or over Wi-Fi).
- 2 The Ethernet gateway web interface appears. By default, you are logged in as guest. This means that some items are hidden. To view all items, click **Sign In** and enter **admin** as user name and the **ACCESS KEY** printed on the label of your Ethernet gateway as password.

7. Troubleshooting

7.1. WPS troubleshooting

WPS does not start

Make sure that the Wi-Fi is on. You can check the Ethernet gateway web interface. See “6.

Configure your Ethernet gateway to your needs (optional)” on page 5 for more information.

7.2 How to reset your Ethernet gateway

If at some point you want to restore the default settings, proceed as follows:

1. Make sure that your Ethernet gateway is turned on.
2. Use a pen or an unfolded paperclip to push the recessed RESET button on your Ethernet gateway for **at least 10 seconds** and then release it.



3. Your Ethernet gateway restarts and applies the factory default settings.
4. Wait two minutes and then start WPS again.
5. Turn your Ethernet gateway slightly and then try again.
6. Obstructions may deteriorate the signal strength. Try to minimize the number of walls between the two devices and then try again.
7. Move the devices closer to each other and then try again.

8. FCC Statement

FCC Statement

This equipment has been tested and found to comply with the limits for a Class B digital device, pursuant to part 15 of the FCC Rules. This device meets all the other requirements specified in Part 15E, Section 15.407 of the FCC Rules. These limits are designed to provide reasonable protection against harmful interference in a residential installation. This equipment generates, uses and can radiate radio frequency energy and, if not installed and used in accordance with the instructions, may cause harmful interference to radio communications. However, there is no guarantee that interference will not occur in a particular installation. If this equipment does cause harmful interference to radio or television reception, which can be determined by turning the equipment off and on, the user is encouraged to try to correct the interference by one or more of the following measures:

- Reorient or relocate the receiving antenna.
- Increase the separation between the equipment and receiver.
- Connect the equipment to an outlet on a circuit different from that to which the receiver is connected.
- Consult the dealer or an experienced radio/TV technician for help.
- This transmitter must not be co-located or operating in conjunction with any other antenna or transmitter.

FCC Radiation Exposure Statement

This device complies with FCC radiation exposure limits set forth for an uncontrolled environment. This equipment must be installed and operated in accordance with provided instructions and the antenna(s) used for this transmitter must be installed to provide a separation distance of at least 20 cm from all persons.

This device complies with Part 15 of the FCC Rules. Operation is subject to the following two conditions:

- 1 this device may not cause harmful interference, and
- 2 this device must accept any interference received, including interference that may cause undesired operation.
- 3 Operations in the 5.15-5.25GHz band are restricted to indoor usage only.

Caution!

Any changes or modifications not expressly approved by the party responsible for compliance could void the user's authority to operate the equipment.

Restricted use for 6 GHz band

- a. FCC regulations restrict the operation of this device to indoor use only.
- b. The operation of this is prohibited on oil platforms, cars, trains, boats, and aircraft, except that operation of this device is permitted in large aircraft while flying above 10,000 feet.
- c. Operation of transmitters in the 5.925-7.125 GHz band is prohibited for control of or communications with unmanned aircraft systems.

