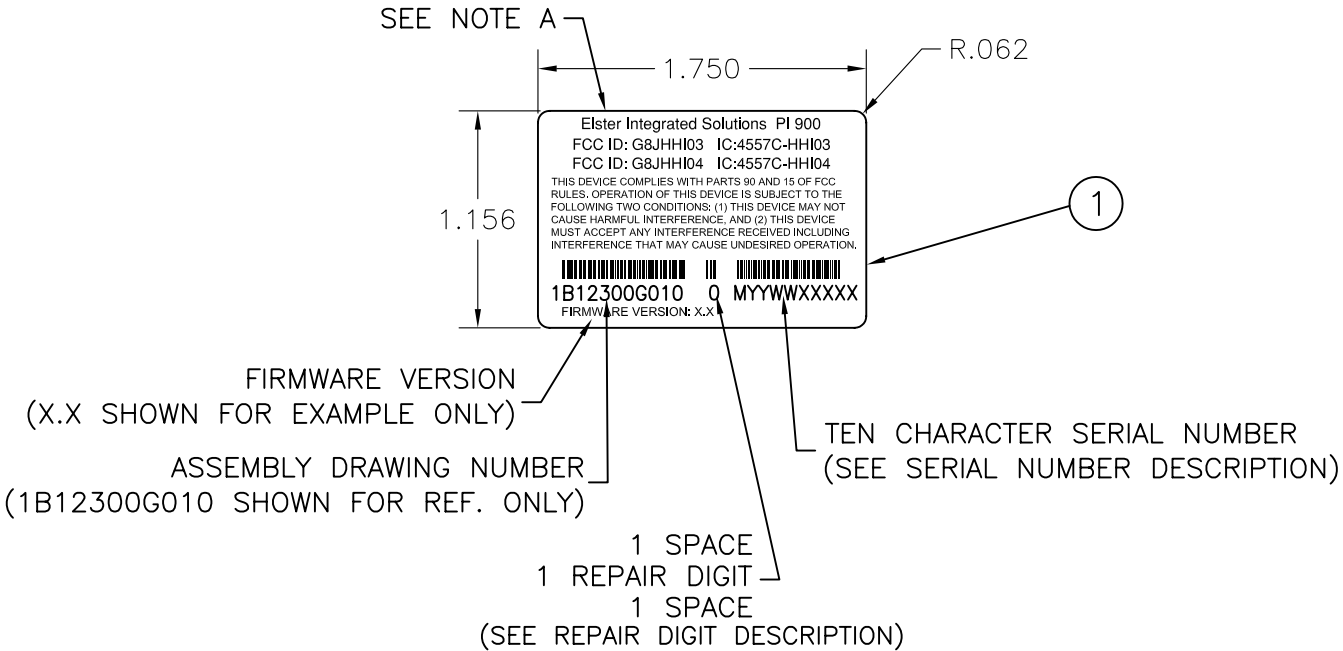



- A – USE PERMANENT BLACK INK AS RECOMMENDED BY THE LABEL STOCK VENDOR. CENTER THE 23–CHARACTER CODE 128 BARCODE. LENGTH OF BARCODE SHOULD BE APPROXIMATELY 1.40” LONG WITH SHARP BLACK LINES AND CLEAN WHITE SPACES. USE A MINIMUM HEIGHT OF .140”. THE BARCODE SHALL BE THE PRODUCT 10–CHARACTER STYLE NUMBER WITH ITS 2–DIGIT REVISION FOLLOWED BY THE 1–DIGIT REPAIR NUMBER, FOLLOWED BY THE 10–CHARACTER SERIAL NUMBER. CENTER THE EQUIVALENT ALPHA NUMERIC CHARACTERS WITH A MINIMUM HEIGHT OF .080” BELOW THE BARCODE. ADD A SPACE FOLLOWING THE 2–DIGIT REVISION AND ANOTHER SPACE FOLLOWING THE 1–DIGIT REPAIR NUMBER.
- B – ONCE A SERIAL NUMBER IS PRINTED ONTO A LABEL IT SHALL NOT BE DUPLICATED. LABELS THAT ARE DAMAGED DURING PLACEMENT SHALL BE REPLACED USING A NEW LABEL WITH A NEW SERIAL NUMBER.
- C – FOR EACH PRODUCT FAMILY, AT THE BEGINNING OF A NEW MANUFACTURING WEEK, THE SERIALIZED PORTION OF THE SERIAL NUMBER SHALL START AT 20000 AND SHALL BE LIMITED TO THE RANGE 20000 TO 39999.
- D – MANUFACTURING WEEK 01 STARTS ON THE FIRST SUNDAY OF A NEW YEAR. THE START OF THE NEW MANUFACTURING YEAR ALSO STARTS ON THE FIRST SUNDAY OF THE NEW YEAR.
- E – THIS SERIAL NUMBER ASSIGNMENT SCHEME ALLOWS 19,999 SERIAL NUMBERS FOR EACH PRODUCT FAMILY IN A SINGLE MANUFACTURING WEEK. IF MORE THAN 19,999 SERIAL NUMBERS ARE NEEDED FOR A PRODUCT FAMILY WITHIN A SINGLE MANUFACTURING WEEK, CONSULT PURCHASING FOR INSTRUCTIONS.

- F – REPAIR DIGIT DESCRIPTION:  
NEW PRODUCTION = 0  
FOR FIRST REPAIR, DUPLICATE THE LABEL EXCEPT CHANGE REPAIR DIGIT TO 1.  
FOR SECOND REPAIR, DUPLICATE THE LABEL EXCEPT CHANGE REPAIR DIGIT TO 2.  
FOR THIRD REPAIR, DUPLICATE THE LABEL EXCEPT CHANGE THE REPAIR DIGIT TO 3.
- G – SERIAL NUMBER DESCRIPTION:
- MYWWXXXXX  
M = PRODUCT FAMILY (SEE PRODUCT FAMILY DESCRIPTION).  
YY = PRODUCTION YEAR  
WW = PRODUCTION WEEK  
XXXXX = WEEKLY, NUMERIC (0–9), SERIAL NUMBER FOR PRODUCT FAMILY.
- PRODUCT FAMILY DESCRIPTION  
M = G (PI 900)

- MATERIAL:
1. LABEL STOCK IDENTCO 1.75 x 1.1563 – TT700 EIS P/N 7S1521 H001  
INK RIBBON IDENTCO TTRR–D1.57ZJ EIS P/N 11807P001  
TO BE PRINTED ON ZEBRA PRINTER Z4M

REVISIONS		
REV	COMMENTS	DATE
0	RELEASE FOR PRODUCTION ECN 1164	11–07–07
1	ADD INDUSTRY CANADA ID PER ECN 1184	11–20–07
2	ADD FCC ID G8JHHI04 and IC 4557C–HHI04 TO LABEL PER ECN 1189	12–17–07



OLD DWG # N.A.		INTERPRET PER ANSI Y14.5 & STD PE-1000		<div></div> <div>ELSTER INTEGRATED SOLUTIONS 208 SOUTH ROGERS LANE RALEIGH, NC 27610 TEL: 919 250-5700 FAX: 919 250-5439</div>			
TOLERANCES-UNLESS OTHERWISE SPECIFIED <div><div>INCHES</div><div>ANGLES± 1°</div><div>MILLIMETERS</div></div> <div><div>.X±</div><div>.XX± .02"</div><div>.XXX± .005"</div><div>X.±</div><div>X.X±</div><div>X.XX±</div></div>							
SURFACES ✓ min		SURFACES ✓ min		TITLE: LABEL, FCC, S/N PI 900 PROJECT: PI 900 REPAIR LABEL (PRINT at ELSTER)			
THIS DOCUMENT IS THE PROPERTY OF ELSTER INTEGRATED SOLUTIONS, AND ITS SUBSTANCE IS CONFIDENTIAL AND PROPRIETARY. THE CONTENTS HEREOF SHALL NOT BE PUBLISHED OR DISCLOSED TO OUTSIDE PARTIES OR USED FOR THEIR BENEFIT WITHOUT THE WRITTEN AUTHORIZATION OF ELSTER INTEGRATED SOLUTIONS				DRFT: ST	03-29-07	DRAWING NUMBER 1B12303 H01	
				ENGR: JC	11-06-07		
				CHKR:		SIZE: B	SCALE: NTS