



World Standardization Certification & Testing CO., LTD
World Standardization Safety and EMC Testing Centre

FCC ID TEST REPORT

for

F-Dolphin AirMouse

MODEL: KMsWand-06, KMsWand-08

Trade Mark: N/A

FCC ID: FYOTRANSMITTER

Test Report Number: WSCT11120846E-2

Issued Date: March 26, 2012

Issued for

Shenzhen KehWin Technologies Co., Ltd.

W2207-2209, Nanshan Digital-Culture Industrial Park, Shenzhen, China

Issued By:

WORLD STANDARDIZATION CERTIFICATION & TESTING CO., LTD.

**Building A, Baoshi Road, Baoshi Science & Technology Park,
Bao'an District, Shenzhen, Guangdong, China**

TEL: +86-755-26996192

FAX: +86-755-26996253

Note: This report shall not be reproduced except in full, without the written approval of World Standardization Certification & Testing CO., LTD. This document may be altered or revised by World Standardization Certification & Testing CO., LTD. personnel only, and shall be noted in the revision section of the document. The test results in the report only apply to the tested sample.



Report reference No.: WSCT11120846E-2

Issued: March 26, 2012

Revised: None

Revision History Of Report

Rev.	Issue No.	Revisions	Effect Page	Revised By
00	WSCT11120846E-2	Initial Issue	ALL	Kallen Wang



Report reference No.: WSCT11120846E-2
Issued: March 26, 2012
Revised: None

TABLE OF CONTENTS

1	TEST CERTIFICATION.....	4
2	TEST RESULT SUMMARY	5
3	EUT DESCRIPTION.....	6
4	TEST METHODOLOGY	7
	4.1. DECISION OF FINAL TEST MODE.....	7
	4.2. EUT SYSTEM OPERATION.....	7
5	SETUP OF EQUIPMENT UNDER TEST.....	8
	5.1. DESCRIPTION OF SUPPORT UNITS	8
	5.2. CONFIGURATION OF SYSTEM UNDER TEST	8
6	FACILITIES AND ACCREDITATIONS	9
	6.1. FACILITIES.....	9
	6.2. ACCREDITATIONS	9
	6.3. MEASUREMENT UNCERTAINTY.....	9
7	TEST REQUIREMENTS.....	10
	7.1. CONDUCTED EMISSION MEASUREMENT.....	10
	7.2. Radiation Emission Test	14
	7.3. Band edge test.....	21
8.	ANTENNA REQUIREMENT	24
9	PHOTOGRAPHS OF THE TEST CONFIGURATION	25
10	PHOTOGRAPHS OF EUT	27



Report reference No.: WSCT11120846E-2
Issued: March 26, 2012
Revised: None

1 TEST CERTIFICATION

Product:	F-Dolphin AirMouse
Model:	KMsWand-06, KMsWand-08
Trade Mark	N/A
Applicant:	Shenzhen KehWin Technologies Co., Ltd. W2207-2209, Nanshan Digital-Culture Industrial Park, Shenzhen, China
Factory:	Shenzhen KehWin Technologies Co., Ltd. W2207-2209, Nanshan Digital-Culture Industrial Park, Shenzhen, China
Tested:	December 26, 2011~ March 26, 2012
Test Voltage:	AC 120V/60Hz
Applicable Standards:	FCC Part 15 Subpart C: 2010 ANSI C63.4:2003

The above equipment has been tested by World Standardization Certification & Testing Co., Ltd., and found compliance with the requirements set forth in the technical standards mentioned above. The results of testing in this report apply only to the product/system, which was tested. Other similar equipment will not necessarily produce the same results due to production tolerance and measurement uncertainties.

Tested By: _____

Date: March 26, 2012

(Jack Ma)

Check By: _____

Date: March 26, 2012

(Mike Mo)

Approved By: _____

Date: March 26, 2012

(Kallen Wang)



Report reference No.: WSCT11120846E-2
Issued: March 26, 2012
Revised: None

2 TEST RESULT SUMMARY

Standard	Item	Result
FCC Part 15 Subpart C: Clause 15.249	Conducted emission Test	PASS
	Radiation Emission Test	PASS
	Band Edge Test	PASS

Note: 1. The test result judgment is decided by the limit of test standard
2. The information of measurement uncertainty is available upon the customer's request.



Report reference No.: WSCT11120846E-2
Issued: March 26, 2012
Revised: None

3 EUT DESCRIPTION

Product	F-Dolphin AirMouse
Trade Mark	N/A
Model	KMsWand-06, KMsWand-08
Applicant	Shenzhen KehWin Technologies Co., Ltd.
Serial Number	N/A
Antenna Type	SMD ANTENNA
EUT Power Rating	DC 3.7V By Battery
Temperature Range(Operating)	-20 ~ +55℃
Operating Frequency (Bluetooth)	2402MHz ~ 2480MHz
Number of Channels	79 Channels
USB Line	N/A

Note: N/A stand for no applicable.

Models difference

No.	Model Number	Voltage	Tested With
1	KMsWand-06	DC 3.7V	<input checked="" type="checkbox"/>
2	KMsWand-08	DC 3.7V	<input type="checkbox"/>

NOTE: KMsWand-06 is tested model, other models are derivative models, The models are identical in circuit and PCB layout, only different on the model names, So the test data of KMsWand-06 can represent the remaining models.

4 TEST METHODOLOGY

4.1. DECISION OF FINAL TEST MODE

The EUT was tested together with the below additional components, and configuration, which produced the worst emission levels, was selected and recorded in this report.

The measurement was performed at 3 axis for lie orientation, side orientation and stand orientation. The lie orientation is the worst mode, so only the worst mode test data was reported.

The following test mode was recorder in this report.

Test item	Test mode
Conducted emission Test	Charging & Transmitting
Radiation Emission Test	CH1, CH40, CH79
Band Edge Test	CH1, CH79,

4.2. EUT SYSTEM OPERATION

1. Set up EUT with the support equipments.
2. Make sure the EUT transmitting continuously during the test.



Report reference No.: WSCT11120846E-2
Issued: March 26, 2012
Revised: None

5 SETUP OF EQUIPMENT UNDER TEST

5.1. DESCRIPTION OF SUPPORT UNITS

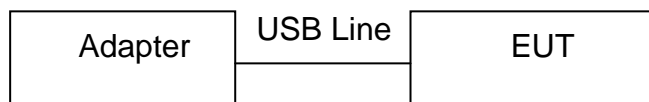
The EUT has been tested as an independent unit together with other necessary accessories or support units. The following support units or accessories were used to form a representative test configuration during the tests.

Manufacturer	Description	Model	Serial Number	FCC
MLF	Adapter	IMU13	N/A	--

Note:

- 1) All the equipment/cables were placed in the worst-case configuration to maximize the emission during the test.
- 2) Grounding was established in accordance with the manufacturer's requirements and conditions for the intended use.

5.2. CONFIGURATION OF SYSTEM UNDER TEST





6 FACILITIES AND ACCREDITATIONS

6.1. FACILITIES

All measurement facilities used to collect the measurement data are located at

World Standardization Certification & Testing CO., LTD.

Building A, Baoshi Road, Baoshi Science & Technology Park, Bao'an District, Shenzhen, Guangdong, China

The sites are constructed in conformance with the requirements of ANSI C63.4 and CISPR Publication 22. All receiving equipment conforms to CISPR Publication 16-1, "Radio Interference Measuring Apparatus and Measurement Methods."

6.2. ACCREDITATIONS

Our laboratories are accredited and approved by the following approval agencies according to ISO/IEC 17025.

USA

FCC (The certificate registration number is 131628)

Germany

TIMCO (The certificate registration number is Q2001)

Canada

TUV Rheinland

INDUSTRY CANADA

(The certificated registration number is 7700A-1)

China

CNAS (The certificated registration number is L3732)

Copies of granted accreditation certificates are available for downloading from our web site, <http://www.wsct.org.cn>

6.3. MEASUREMENT UNCERTAINTY

Where relevant, the following measurement uncertainty levels have been estimated for tests performed on the EUT as specified in CISPR 16-4-2:

Measurement	Frequency		Uncertainty
Conducted emissions	9kHz~30MHz		+/- 3.59dB
Radiated emissions	Horizontal	30MHz ~ 200MHz	+/- 4.77dB
		200MHz ~1000MHz	+/- 4.93dB
	Vertical	30MHz ~ 200MHz	+/- 5.04dB
		200MHz ~1000MHz	+/- 4.93dB

This uncertainty represents an expanded uncertainty expressed at approximately the 95% confidence level using a coverage factor of k=2.

7 TEST REQUIREMENTS

7.1. CONDUCTED EMISSION MEASUREMENT

7.1.1. LIMITS

FREQUENCY (MHz)	Class B (dBuV)	
	Quasi-peak	Average
0.15 - 0.5	66 - 56	56 - 46
0.50 - 5.0	56	46
5.0 - 30.0	60	50

NOTE:

- (1) The lower limit shall apply at the transition frequencies.
- (2) The limit decreases in line with the logarithm of the frequency in the range of 0.15 to 0.50 MHz.
- (3) All emanations from a class A/B digital device or system, including any network of conductors and apparatus connected thereto, shall not exceed the level of field strengths specified above.

7.1.2. TEST INSTRUMENTS

Conducted Emission Test Site				
Name of Equipment	Manufacturer	Model	Serial Number	Calibration Due
EMI Test Receiver	R&S	ESCI	100005	12/16/2012
LISN	LS	LS16	16010222119	12/16/2012
LISN(EUT)	Mestec	AN3016	04/10040	12/22/2012

- NOTE:** 1. The calibration interval of the above test instruments is 12 months and the calibrations are traceable to international system unit (SI).
2. N.C.R = No Calibration Request.

7.1.3. TEST PROCEDURES

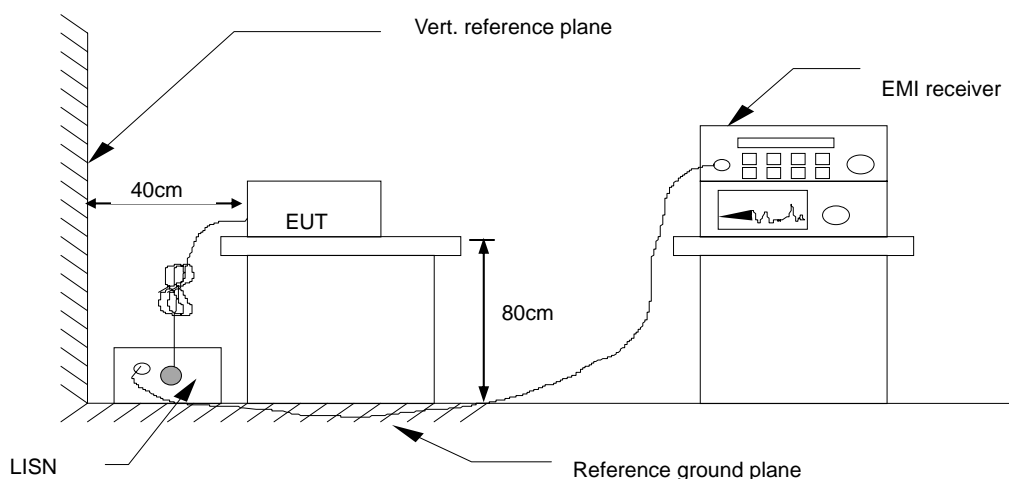
The EUT was put on a wooden table which was 0.8metre high above the ground and connected to the AC mains through a Artificial Mains Network (A.M.N). The mains lead in excess of 1 m separating the EUT from the AMN was folded back and forth parallel to the lead so as to form a bundle with a length of 0.3m to 0.4m. The EUT was kept 0.4m from any other earthed conducting surface. Both sides of AC line were checked to find out the maximum conducted emission levels according to the test procedure during conducted emission test.

The bandwidth of the test receiver (ESCI) was set at 9KHz.

The frequency range from 150 KHz to 30 MHz was investigated.

The test data of the worst-case condition(s) was recorded.

7.1.4. TEST SETUP



For the actual test configuration, please refer to the related item – Photographs of the Test Configuration.

7.1.5. Test Result

Model No.	KMsWand-06	6dB Bandwidth	120 KHz
Environmental Conditions	26°C, 60% RH	Test Mode	Operating
Detector Function	Peak / Quasi-peak/AV	Test Result	Pass
Test By	Jack Ma		

NOTE: 1. L1 = Line One (Live Line) / L2 = Line Two (Neutral Line).

2. “---” denotes the emission level was or more than 2dB below the Average limit, so no re-check anymore.

Freq. = Emission frequency in MHz

Reading level(dBuV) = Receiver reading

Corr. Factor (dB) = Attenuator Factor+ Cable loss

Level (dBuV) = Reading level(dBuV) + Corr. Factor (dB)

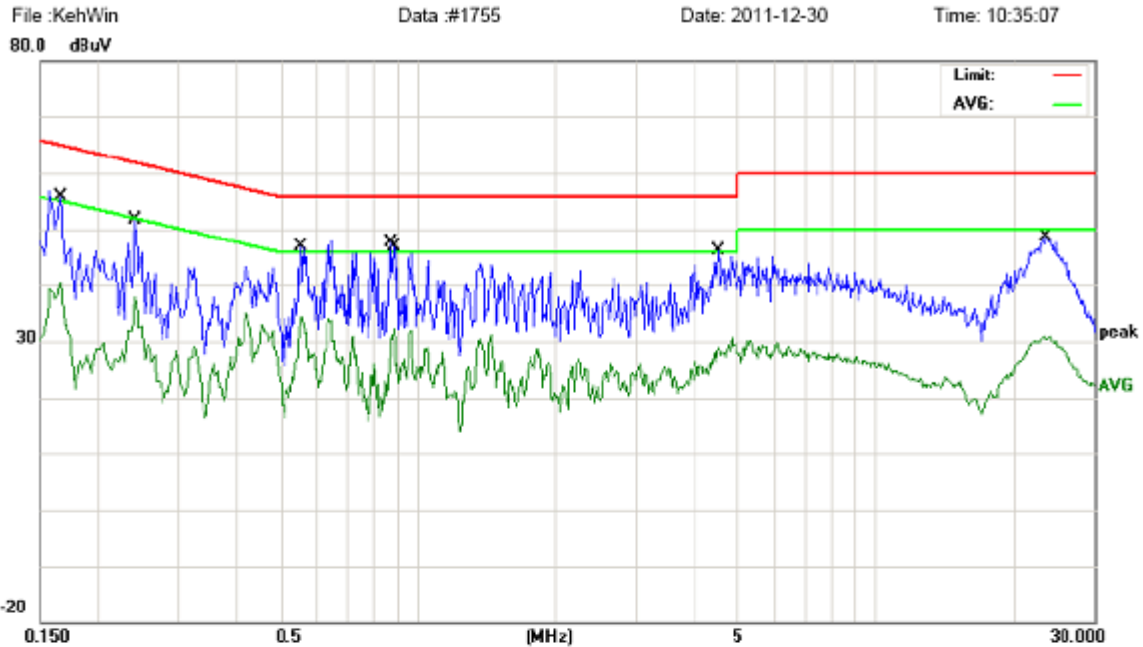
Limit (dBuV) = Limit stated in standard

Margin (dB) = Level (dBuV) – Limits (dBuV)

Q.P.=Quasi-Peak

Please refer to following diagram for individual

Conducted Emission Measurement



Site 843 Shielded Room

Phase: **L1**

Temperature: 26

Limit: FCC Part 15 Conduction(QP)

Power: AC 120V/60Hz

Humidity: 60 %

EUT: F-Dolphin AirMouse

M/N: KMsWand-06

Mode: Operating

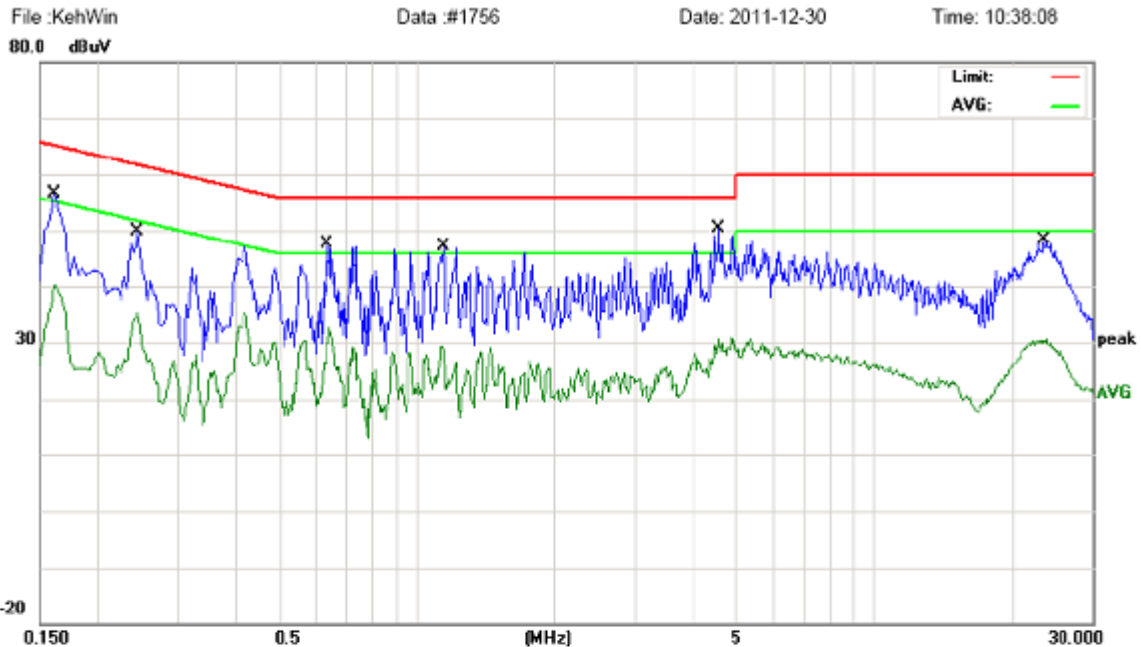
Note:

No.	Mk.	Freq.	Reading	Correct	Measure-	Limit	Over		
		MHz	Level	Factor	ment			Detector	Comment
			dBuV	dB	dBuV	dBuV	dB		
1		0.1660	45.42	10.40	55.82	65.15	-9.33	QP	
2		0.1660	30.09	10.40	40.49	55.15	-14.66	AVG	
3		0.2420	41.17	10.45	51.62	62.02	-10.40	QP	
4		0.2420	27.53	10.45	37.98	52.02	-14.04	AVG	
5		0.5580	36.33	10.57	46.90	56.00	-9.10	QP	
6		0.5580	23.75	10.57	34.32	46.00	-11.68	AVG	
7	*	0.8780	36.66	10.85	47.51	56.00	-8.49	QP	
8		0.8860	21.16	10.89	32.05	46.00	-13.95	AVG	
9		4.5420	35.47	10.59	46.06	56.00	-9.94	QP	
10		4.5420	18.36	10.59	28.95	46.00	-17.05	AVG	
11		23.5700	38.10	10.54	48.64	60.00	-11.36	QP	
12		23.5700	19.94	10.54	30.48	50.00	-19.52	AVG	

*:Maximum data x:Over limit l:over margin

(Reference Only)

Conducted Emission Measurement



Site 843 Shielded Room
 Limit: FCC Part 15 Conduction(QP)
 EUT: F-Dolphin AirMouse
 M/N: KMsWand-06
 Mode: Operating
 Note:

Phase: **N**
 Power: AC 120V/60Hz

Temperature: 26
 Humidity: 60 %

No.	Mk.	Freq. MHz	Reading Level dBuV	Correct Factor dB	Measure- ment dBuV	Limit dBuV	Over dB	Detector	Comment
1		0.1620	46.33	10.41	56.74	65.36	-8.62	QP	
2		0.1620	29.82	10.41	40.23	55.36	-15.13	AVG	
3		0.2460	39.45	10.46	49.91	61.89	-11.98	QP	
4		0.2460	24.98	10.46	35.44	51.89	-16.45	AVG	
5		0.6380	36.75	10.78	47.53	56.00	-8.47	QP	
6		0.6380	19.08	10.78	29.86	46.00	-16.14	AVG	
7		1.1420	36.59	10.50	47.09	56.00	-8.91	QP	
8		1.1420	18.47	10.50	28.97	46.00	-17.03	AVG	
9	*	4.5739	39.67	10.59	50.26	56.00	-5.74	QP	
10		4.5739	19.95	10.59	30.54	46.00	-15.46	AVG	
11		23.6180	37.83	10.54	48.37	60.00	-11.63	QP	
12		23.6180	19.77	10.54	30.31	50.00	-19.69	AVG	

*:Maximum data x:Over limit !:over margin

(Reference Only)

7.2. Radiation Emission Test

7.2.1. Limits

According to 15.249 the field strength of emissions from intentional radiators operated under these frequencies bands shall not exceed the following:

Fundamental Frequency	Field Strength of Fundamental		Field Strength of Spurious	
	mV/meter	dBuV/meter	uV/meter	dBuV/meter
902-928MHz	50	94	500	54
2400-2483.5MHz	50	94	500	54
5725-5875MHz	50	94	500	54
24.0-24.25GHz	250	108	2500	68

The above field strength limits are specified at a distance of 3 meters. Emissions radiated outside of the specified bands, shall be according to the general radiated limits in 15.209 as following:

Frequencies (MHz)	Field strength uV/meter	Measurement distance (meters)
0.009-0.490	2400/F(kHz)	300
0.490-1.705	24000/F(kHz)	30
1.705-30.0	30	30
30-88	100	3
88-216	150	3
216-960	200	3
Above 960	500	3

As shown in 15.35(b), for frequencies above 1000MHz, the field strength limits are based on average detector, however, the peak field strength of any emission shall not exceed the maximum permitted average limits, specified above by more than 20dB under any condition of modulation.

Frequency Range of Radiated Measurement

According to 15.33(a), the intentional radiator operates below 10GHz, must be measured up to the tenth harmonic of the highest fundamental frequency or 40GHz, whichever is lower



Report reference No.: WSCT11120846E-2
Issued: March 26, 2012
Revised: None

7.2.2. TEST INSTRUMENT

966 Chamber				
Name of Equipment	Manufacturer	Model	Serial Number	Calibration Due
EMI Test Receiver	R&S	ESCI	100005	12/16/2012
Spectrum Analyzer	R&S	FSU	100114	07/14/2012
Pre Amplifier	H.P.	HP8447E	2945A02715	12/16/2012
Pre-Amplifier	Compliance	PAM0118	1360976	12/16/2012
Bilog Antenna	SUNOL Sciences	JB3	A021907	06/10/2012
Horn Antenna	Compliance	CE18000	001	06/10/2012
Cable	TIME MICROWAVE	LMR-400	N-TYPE04	06/09/2012
Cable	TIME MICROWAVE	--	--	06/09/2012
System-Controller	CCS	N/A	N/A	N.C.R
Turn Table	CCS	N/A	N/A	N.C.R
Antenna Tower	CCS	N/A	N/A	N.C.R

7.2.3. Test procedure

The EUT was placed on a turn table which was 0.8 meter above ground. The turn table can rotate 360 degrees to determine the position of the maximum emission level. The EUT was set 3 meters away from the receiving antenna which was mounted on a antenna tower. At the frequency band of 30MHz to 1GHz, The measuring antenna moved up and down to find out the maximum emission level. It moved from 1 to 4 m for horizontal and vertical polarizations. The broadband antenna (calibrated by dipole antenna) was used as a receiving antenna. At the frequency band of 1GHz to 25GHz, The measuring antenna moved from 1 to 4 m for horizontal and vertical polarization. The horn antenna was used as a receiving antenna.

The resolution bandwidth and video bandwidth of the test receiver was 120 KHz and 300KHz for Quasi-peak detection at frequency below 1GHz.

The resolution bandwidth and video bandwidth of the test receiver was 1MHz and 3MHz for Peak emission measurement above 1GHz.

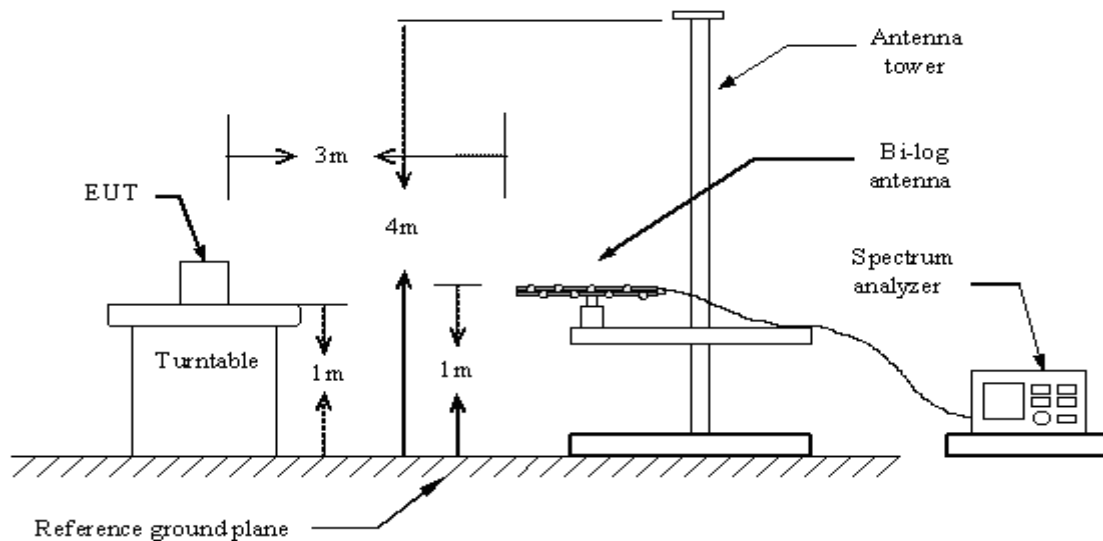
For Average emission above 1GHz, the resolution bandwidth and video bandwidth of the test receiver was 1MHz and 10Hz.

The EUT was tested in Chamber Site.

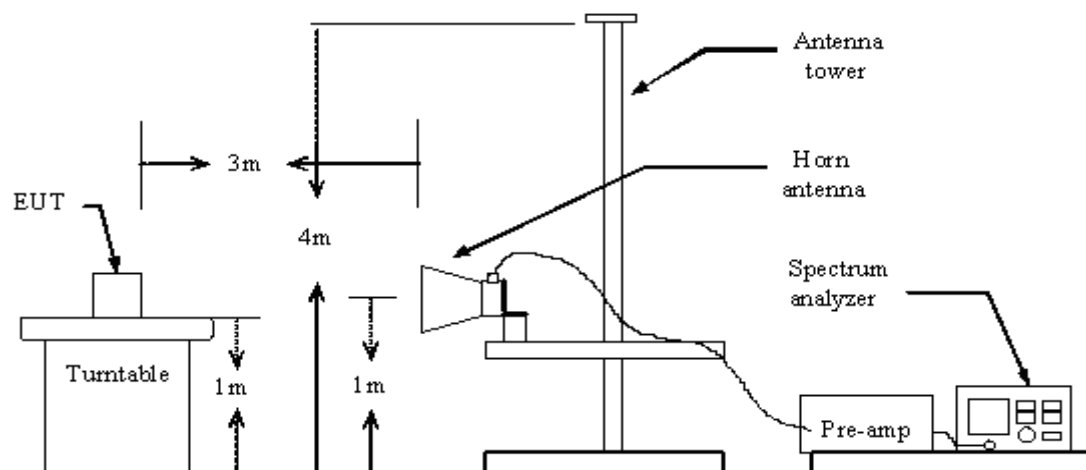
The test data of the worst case condition(s) was reported on the following pages.

7.2.4 Test setup diagram

Below 1GHz



Above 1GHz



7.2.5. Test Result

A. Fundamental Radiated Emission Data

Product:	F-Dolphin AirMouse	Test mode:	CH Low ~ CH High
Test Item:	Fundamental Radiated Emission Data	Temperature:	25°C
Test Voltage:	AC 120V	Humidity:	56%RH
Test Result:	PASS		

CH Low

Freq. (MHz)	Emission(dBμ V/m) Peak Detector/ AV	HORIZ/ VERT	Limits(dBμ V/m) Peak/Average	Margin (dB)
2402.00	91.6/ 73.2	HORIZ	114/94	22.4/20.8
2402.00	94.6 / 76.7	VERT	114/94	19.4/17.3

CH Middle

Freq. (MHz)	Emission(dBμ V/m) Peak Detector/ AV	HORIZ/ VERT	Limits(dBμ V/m) Peak/ Average	Margin (dB)
2441.00	92.4/73.8	HORIZ	114/94	21.6/20.2
2441.00	93.6/74.2	VERT	114/94	20.4/19.8

CH High

Freq. (MHz)	Emission(dBμ V/m) Peak Detector/ AV	HORIZ/ VERT	Limits(dBμ V/m) Peak/ Average	Margin (dB)
2480.0	92.9/75.5	HORIZ	114/94	21.1/18.5
2480.0	94.3/77.0	VERT	114/94	19.7/17.0



Report reference No.: WSCT11120846E-2
Issued: March 26, 2012
Revised: None

B. Harmonics Radiated Emission Data

Product:	F-Dolphin AirMouse	Test mode:	CH Low~CH High
Test Item:	Radiated Emission Data	Temperature:	25°C
Test Voltage:	AC 120V	Humidity:	56%RH
Test Result:	PASS		

CH Low

Freq. (MHz)	Emission(dBuV/m) Peak Detector	HORIZ/ VERT	Limits(dBu V/m) Peak/ Average	Margin (dB)
4804.12	-	H/V	74.0/54.0	-
7206.18	-	H/V	74.0/54.0	-
9608.24	-	H/V	74.0/54.0	-
12010.3	-	H/V	74.0/54.0	-
14412.36	-	H/V	74.0/54.0	-
16814.42	-	H/V	74.0/54.0	-
19216.48	-	H/V	74.0/54.0	-
21618.54	-	H/V	74.0/54.0	-
24020.6	-	H/V	74.0/54.0	-

CH Middle

Freq. (MHz)	Emission(dBu V/m) Peak Detector	HORIZ/ VERT	Limits(dBu V/m) Peak/ Average	Margin (dB)
4882.18	-	H/V	74.0/54.0	-
7323.27	-	H/V	74.0/54.0	-
9764.36	-	H/V	74.0/54.0	-
12205.45	-	H/V	74.0/54.0	-
14646.54	-	H/V	74.0/54.0	-
17087.63	-	H/V	74.0/54.0	-
19528.72	-	H/V	74.0/54.0	-
21969.81	-	H/V	74.0/54.0	-
24410.9	-	H/V	74.0/54.0	-



Report reference No.: WSCT11120846E-2
Issued: March 26, 2012
Revised: None

CH High

Freq. (MHz)	Emission(dBμ V/m) Peak Detector	HORIZ/ VERT	Limits(dBμ V/m) Peak/ Average	Margin (dB)
4960.26	-	H/V	74.0/54.0	-
7440.39	-	H/V	74.0/54.0	-
9920.52	-	H/V	74.0/54.0	-
12400.65	-	H/V	74.0/54.0	-
14880.78	-	H/V	74.0/54.0	-
17360.91	-	H/V	74.0/54.0	-
19841.04	-	H/V	74.0/54.0	-
22321.17	-	H/V	74.0/54.0	-
24801.3	-	H/V	74.0/54.0	-

Note: - means the emission is too low at least 20dB to the limit.

C. General Radiated Emission Data

Product:	F-Dolphin AirMouse	Test mode:	transmitting
Test Item:	Radiated Emission Data	Temperature:	25°C
Test Voltage:	AC 120V	Humidity:	56%RH
Test Result:	PASS		

Freq. (MHz)	Emission(dBμ V/m) Peak Detector	HORIZ/ VERT	Limits(dBμ V/m) Peak/ Average	Margin (dB)
96.82	30.3	HORIZ	43.5	13.2
96.82	32.6	VERT	43.5	10.9
195.53	27.5	HORIZ	43.5	16.0
195.53	30.7	VERT	43.5	12.8
432.43	29.8	HORIZ	46	16.2
432.43	32.6	VERT	46	13.4

NOTE:9KHz-30MHz the measurements were greater than 20dB below the limit.

7.3. Band edge test

7.3.1. Limits

According 15.249(d), Emission radiated outside of the specified frequency bands, except for harmonics, shall be attenuated by at least 50dB below the level of the fundamental or to the general radiated emission limits in section 15.209, whichever is the lesser attenuation.

7.3.2. TEST INSTRUMENT

Same as 7.2.2

7.3.3. Test procedure

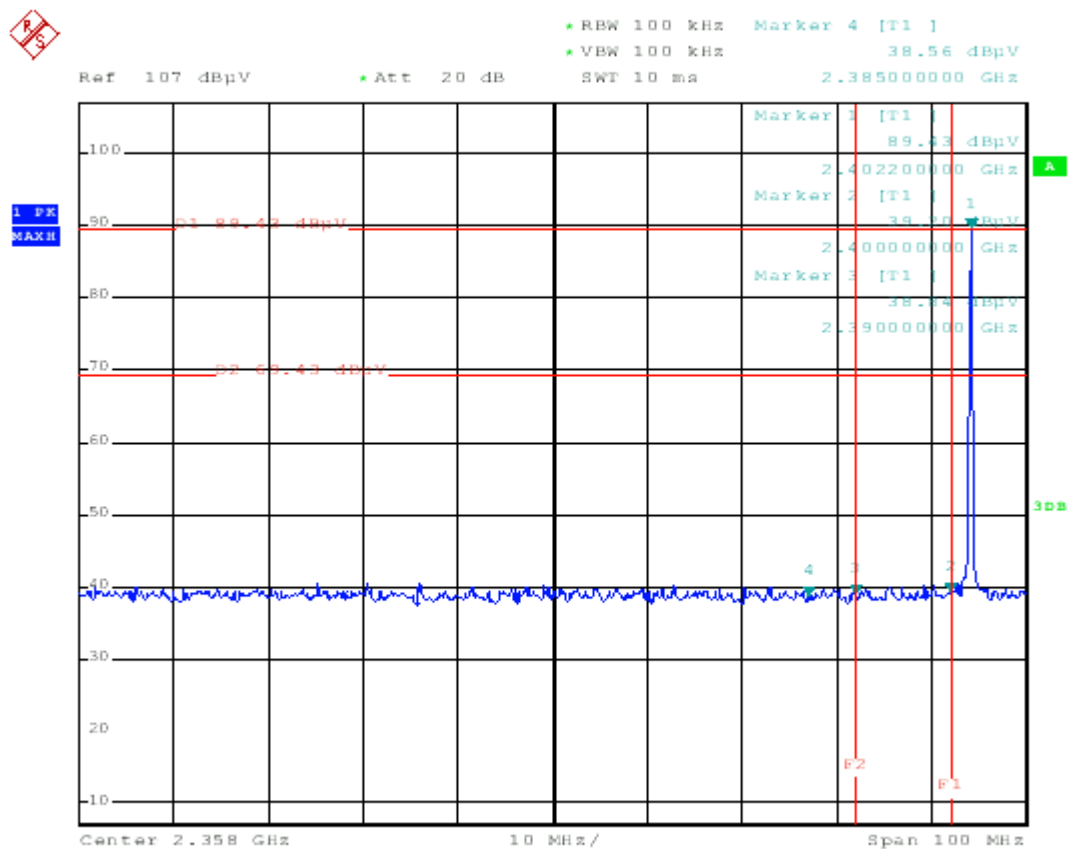
1. The EUT was placed on a turntable which is 0.8m above ground plane.
2. Set EUT as continuous transmitting mode.
3. Set the EUT work on the CH1, CH79 individually.
4. Set SPA Frequency = Operation frequency, for PK: RBW =1MHz, VBW=3MHz
5. Set SPA trace max hold, then view.

7.3.4. Test setup diagram

Same as 7.2.4

7.3.5. Test result

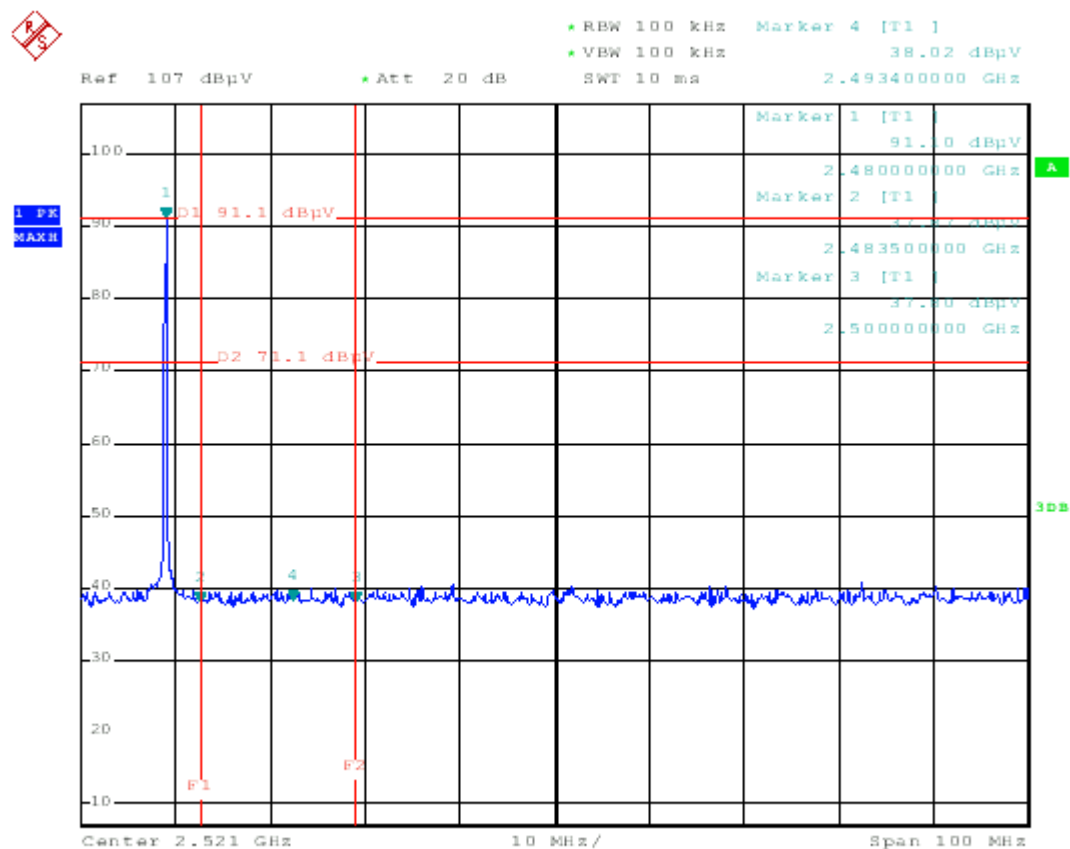
Product:	F-Dolphin AirMouse	Test mode:	CH Low, CH High
Test Item:	Band edge	Temperature:	25°C
Test Voltage:	AC 120V	Humidity:	56%RH
Test Result:	PASS		



Emission in the Restricted Bands

Frequency [MHz]	dBc [dB]	AV [dBμV/m]	Polarity (H/V)	AV limit [dBμV/m]
2310	-	34.6	V	54
2385	-	34.7	V	54
2390	-	34.8	V	54

The above field strength levels were measured in Vertical polarity which is the worst case.



Emission in the Restricted Bands

Frequency [MHz]	dBc [dB]	AV [dBμV/m]	Polarity (H/V)	AV limit [dBμV/m]
2483.5	-	32.87	V	54
2493.4	-	33.08	V	54
2500	-	33.83	V	54

The above field strength levels were measured in Vertical polarity which is the worst case.



Report reference No.: WSCT11120846E-2
Issued: March 26, 2012
Revised: None

8. ANTENNA REQUIREMENT

8.1. Standard applicable

For intentional device, according to FCC 47 CFR Section 15.203, an intentional radiator shall be designed to ensure that no antenna other than that furnished by the responsible party shall be used with the device.

8.2. Antenna connected construction

The antenna used in this product is SMD ANTENNA and no consideration of replacement.

9 PHOTOGRAPHS OF THE TEST CONFIGURATION

CONDUCTED EMISSION TEST



RADIATED EMISSION TEST BELOW 1GHz



**RADIATED EMISSION TEST ABOVE 1GHz**

10 PHOTOGRAPHS OF EUT

Appearance photograph of EUT



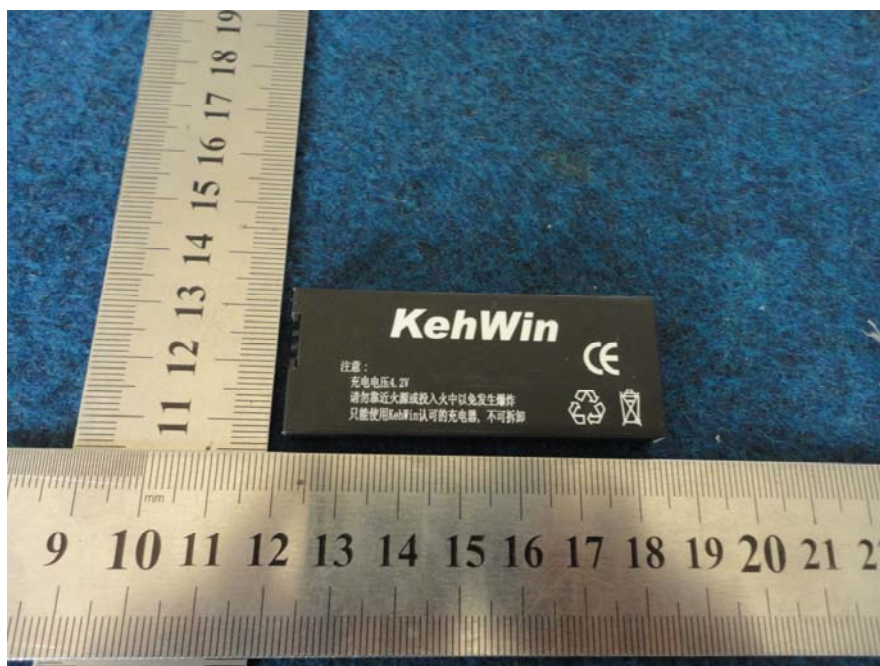
Appearance photograph of EUT



Appearance photograph of EUT



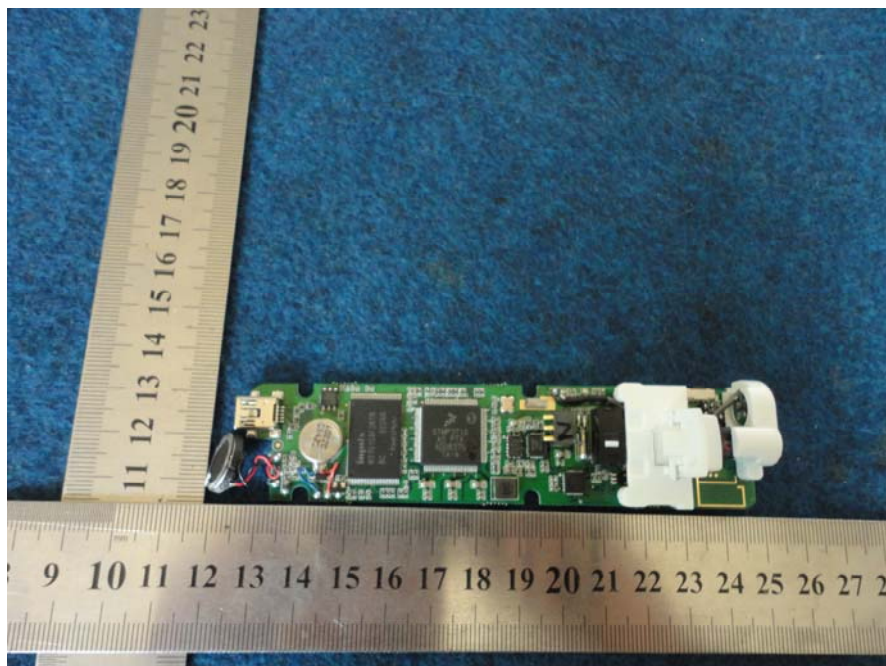
Battery photograph of EUT



Battery photograph of EUT



PCB photograph of EUT



PCB photograph of EUT

