

User's Manual

Product Name: Tablet PC

Model No.: T10Y

Table Of Contents

CHAPTER 1	
GETTING STARTED	1
Getting Started	2
Inventory	3
Safety and Maintenance	4
Checklists	5
Features	6
Where to Look For Information.....	6
Quick Start	7
Loading Windows	8
Adjusting the Volume and Brightness.....	9
Adjusting the Brightness	9
Turning off Your Computer	10
CHAPTER 2	
GETTING STARTED	11
Hardware and Software	12
Front View	13
Right View	14
Top View.....	15
Bottom View.....	16
Power Indicators	17
Front View buttons.....	18
Function Keys	19
Quick Start Button	20
Touch Pen	21
Connecting the Floppy Disk Drive	22
Disk Drives.....	22
The CD-ROM, DVD-ROM, or Combo Drive.....	23
Connecting the Printer	23
The PCMCIA Card Slot.....	23
CF (Compact Flash) Card Slot	24
Memory.....	24
Communication Components	27

CHAPTER 3	
MAKING CONNECTIONS	28
Making Connections	29
Right Side Connectors	29
Top Side Connectors	31
CHAPTER 4	
SYSTEM SOFTWARE	32
System Software	33
System Recovery	33
CHAPTER 5	
POWER MANAGEMENT AND USING SOFTWARE	38
Power Management	39
When to Replace the Battery	40
Heat Considerations	41
Using Software	42
APPENDIX A	
STATEMENTS	44
Statements	45
European Notice.....	47
Safety CAUTION	48
Battery Disposal.....	49
CAUTION FOR ADAPTER.....	49
BATTERY CAUTION.....	49
REGULATORY INFORMATION(INTEL WIFI).....	52



Chapter 1
Introduction



Getting Started

Congratulations on your purchase of a Tablet PC. The Tablet PC is a fully functional PC with durable design suitable for healthcare environment. It is a **mobile clinical assistant (MCA)** that integrates technology from **Intel® Health**.

With your Tablet PC you will be able to organize and access important clinical information at any time. In addition, you will be able to use the biometric fingerprint reader or authenticate your badge with the RFID reader.

This Manual contains all the information you need to set up and use your Tablet PC. It describes all the features of the Tablet PC in an easy-to-read yet thorough manner.



The Intel® Health brand signals the company's specialization in healthcare and commitment to the healthcare industry while drawing on Intel's rich heritage as a technology innovator. Intel is a trusted name associated with innovation, reliability, quality, and speed — attributes that resonate with key decision makers in the healthcare sector.

Intel and the Intel logo are trademarks of Intel Corporation in the U.S. and other countries.

Inventory

This Tablet PC is designed for years of productive and pleasurable computing. Use this section to keep details of your purchase. This information will be required should you need to make repairs to your Tablet PC during the warranty period. Update this section when you add new options.

DATE OF PURCHASE: _____

PLACE OF PURCHASE: _____

DEALER'S NAME: _____

DEALER'S ADDRESS: _____

TELEPHONE: _____

E-MAIL ADDRESS/WWW: _____

CONTACT PERSON: _____

MODEL NUMBER: _____

SERIAL NUMBER: _____



Safety and Maintenance

You can use your Tablet PC under a wide range of environmental conditions. However, to ensure long use and continued high performance, consider the following factors when setting up your Tablet PC:

- Follow all warnings and instructions noted in this documentation and in the Windows Help program.
- The first time you use your Tablet PC, we recommend that you carefully read the Making Connections section of this manual and initialize the battery to ensure optimum battery performance.
- Unplug the Tablet PC from the power outlet before cleaning. Use a damp cloth for cleaning. Do not use aerosols, solvents, or strong detergents.
- Slots and openings in the system cabinet are for ventilation purposes. Do not block or cover these openings or the system could overheat. Do not use or store the Tablet PC near a source of heat or dust.
- On the base or rear panel of this Tablet PC, there is a label with information on the power requirements of this system. These requirements must be followed. If you are unsure of your local power supply, consult your dealer or local Power Company.
- Do not step on or place anything on the power cord.
- If you use the Tablet PC with an extension cord, ensure that the total ampere ratings of all the devices sharing the extension do not exceed the rating of the extension cord or the rating of the wall outlet.
- Never push foreign objects into the Tablet PC through any of the slots or openings. Dangerous voltages are present, which could cause electric shock or fire, or damage sensitive components.

Cleaning the Tablet PC

To clean the Tablet PC, wipe its surface gently using a soft cotton cloth slightly dampened with alcohol or disinfecting products.

The device's outer surfaces (plastic shell, seal, touch panel, buttons, docking base connector, barcode scanner window, etc) can resist (80% or less) Alcohol, bleach, iodine and common hospital disinfectants.

Checklists

After opening the package, carefully inspect the contents. If any of the items is missing or appear damaged, contact your dealer. The shipping carton should contain the following:

STANDARD

- A Tablet PC with a hard disk drive
- A standard battery
- An AC adapter with power cord (I.T.E. AC power or Medical AC power)(Option)
- User's Manual (Install in Hard Disk)
- Driver CD (Install in Hard Disk)

OPTIONS

The following items are normally optional, but some vendors may include them in the standard package. Some items may not be available in some countries, or some vendors may choose not to carry all the items.

- Second battery
- 3G module
- RFID reader
- Barcode scanner
- 2 mega pixels camera module
- Docking station



Caution: When purchasing any of the accessories listed above, purchase only those accessories that are approved for use with your Tablet PC. The above accessories are proprietary items. Your system vendor can obtain these approved accessories. If you use items that are not approved for use with this Tablet PC, you may cause your Tablet PC to malfunction, or to emit or receive electro-magnetic radiation in excess of local regulations. For non-proprietary accessories such as PC cards or printers, ensure that the accessory functions properly in your Tablet PC before making the purchase. Your system vendor may be able to recommend reliable brands and models.

Features

Software Included

Windows® XP Tablet PC Edition which includes:

- Microsoft® Internet Explorer
- Microsoft® Outlook Express
- Microsoft® Windows Media Player

Windows Vista Business (Optional)

High performance Processors

- Intel® ULV U2100 1.06GHz CPU or above (FSB 533MHz)
- Intel® ULV Celeron® 423 1.06GHz CPU or above (FSB 533MHz)

Smart Display

Automatic screen orientation & brightness adjustment

Smart Touch

Fingertip & stylus accessible, automatically timing control & palm rejection implemented

Comprehensive Network Connection

- PAN: Bluetooth 2.1
- LAN: Wireless LAN 802.11 a/b/g/n
- MAN: 3G module (optional)

Versatile Integration

RFID Reader, Barcode Scanner, Fingerprint Reader, Webcam and Microphone Array

Unburdened Consideration

Slim, light weight, no noise (fanless), and “grip & go” ergonomic handle

Rugged Enhancement

Sustainable from the free drop (4 feet height) and severe ingress level (IP54)

Flexible Battery Supply

Long power supply up to 4.5 hrs, and hot-swappable

Extended Access Control

3 user programmable keys available to define

Rugged Standard

Drop Resistant:

26 drops of 36 inches to plywood over concrete with unit on
2 units to pass.

Water Sealing:

Rain chamber to operate at no less than 40 PSIG and no less than 4
in/hr. 10 min per axis, 6 axes, Unit is non-operating.

Where to Look For Information

About Your Tablet PC

This User's Manual describes the key elements of your Tablet PC. New users can find a simple step-by-step orientation in the Quick Start section of this chapter.

About Windows

Windows Online Help, found on the Start menu, offers extensive Windows assistance. **Welcome to Windows** offers an online orientation for new Windows users. Find it in:

Start/Programs/Accessories/System Tools.

Quick Start

Turning on the Tablet PC for the First Time



1. Connect the power cord to the AC/ DC adapter.
2. Connect the AC/ DC adapter to the DC power port on the right hand side of your Tablet PC.
3. Connect the power cord to an AC outlet.
4. Press the power button to turn on the power.

AC Adaptor features:

I.T.E. AC power

Input: 100V-240V, 50Hz-60Hz

Output: 65W, 20V

Medical AC power

Input: 100V-240V, 47Hz-63Hz

Output: 78W, 18V



Note: The battery is not fully charged. Allow your battery to fully charge before using it (i.e., before disconnecting AC power). Calibrating the battery before use is also highly recommended. Refer to Chapter of *Power Management*, for further information.

Loading Windows

The following section is for installing the Windows operating system only. If you are installing a different operating system, please check with your vendor for installation details.

Your Tablet PC will begin loading Windows once you turn on the power. Wait a few seconds for Windows setup to load. The Windows setup will prompt you for the product key number, shown to the right:



Product key number

Note: The product key is on a sticker attached to the bottom of the Tablet PC.

1. Type your name, and, if applicable, the name of your company.
2. Read the End User's License Agreement. Click **Next** to accept it.
3. Enter the product key number. You can find this on the Certificate of Authenticity on a sticker attached to the Tablet PC. Click **Finish**.
4. The Start Wizard will prompt you to set the date, and your local time.

After the Start Wizard updates your system settings, the Welcome to Windows screen will appear. You may disable this feature by clearing the check box labeled **show this screen each time Windows starts**.

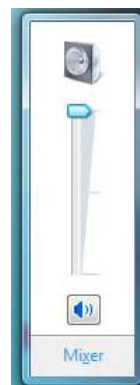
Some software comes preloaded with Windows. New users can familiarize themselves with this software by selecting Programs from the start menu, then clicking on programs to run them.

Adjusting the Volume

You can adjust the volume with hot key:

- Fn + Navigation Key with pressing it upward: volume up
- Fn + Navigation Key with pressing it downward: volume down

Alternatively, you can adjust the volume with the Windows volume control applet located on the taskbar.



Adjusting the Brightness

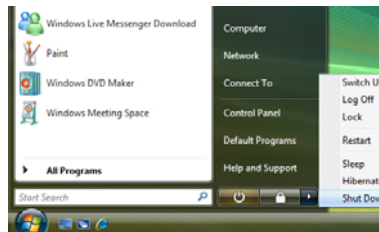
Use the following hot key combinations to adjust the LCD panel brightness:

- Fn + Navigation Key toward left: decreases the brightness
- Fn + Navigation Key toward right: increases the brightness

Turning off Your Tablet PC

Turning off the Tablet PC properly is important to maintaining your Tablet PC.

1. On the Start menu, click **Shut Down**.
2. Click the radio button next to **Shut Down** in the Shut Down Windows screen, and then click **OK**.



If you are going to be away from the Tablet PC for a short period, there are ways of conserving power without shutting down the system.



Warning: Shutting off the Tablet PC improperly may result in data loss.



Chapter 2

Getting Started





Hardware and Software

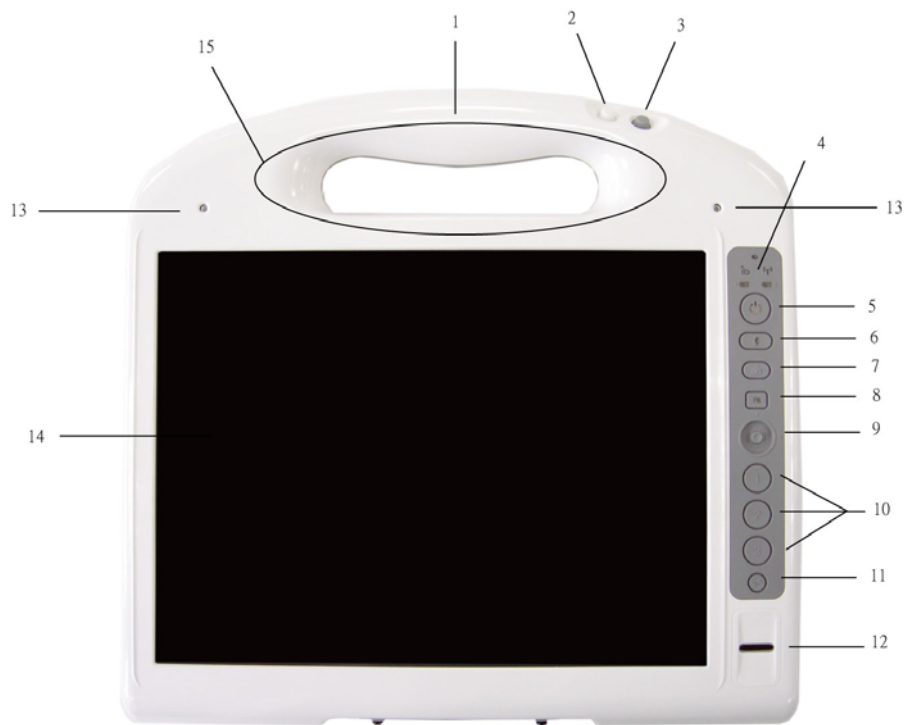
This chapter introduces the different components and controls of your Tablet PC, including the hardware components, the software, and the audio and video systems.

Getting Started

Before you begin using your Tablet PC, read this chapter to familiarize yourself with the main components installed in the system.

Front View

1. Tablet handle
2. RFID reader trigger
3. Barcode scanner trigger
4. Status indicator
5. Power button
6. Bluetooth On/Off button
7. Camera capture
8. Function key
9. Navigation & Enter key
10. User programmable keys
11. Security key
12. Finger printer scanner
13. Internal microphone
14. Touch Screen panel
15. RFID reader antenna



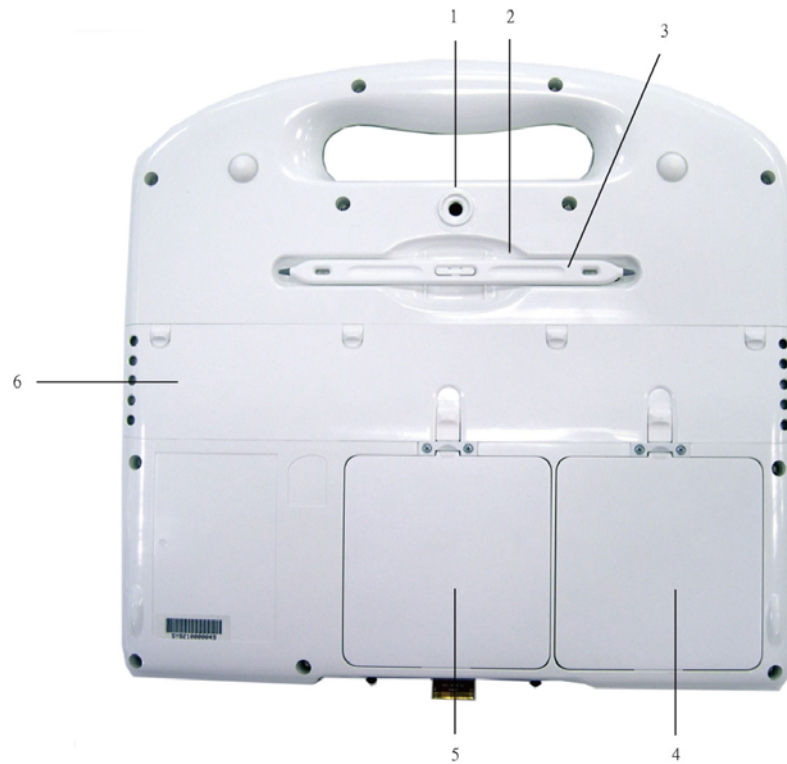
Right View

1. LCD panel
2. Barcode scanner sensor
3. DC power jack
4. Docking connector



Bottom View

1. Camera lens
2. Touch pen holder
3. Touch pen
4. 1st battery
5. 2nd battery
6. Speaker



Power Indicators








The power indicators show which power source the system is using. They also show battery status and low battery power alerts. The power indicators remain active and viewable even when the LCD panel is closed.



Icon	Light	Description
	Blue	Wireless LAN is in use
	Green	RFID is in use
	Green	Battery fully charged
	Orange	Battery charging
	Red	When battery capacity is low than 10%
	Flashing Orange	When OTP (over temperature protection) of the battery is activated
	Green	Power is on and the battery is in use
	Flashing Green	Power is in suspend mode
	Light Sensor	Built in ambient light sensor to adjust the brightness of LCD. This will be performed automatically while in battery mode, and can be enabled/ disabled through setting in the BIOS.



Front View Buttons

The eleven hot keys are unique features of your Tablet PC. The function as follows:

Icon	Function
	Suspend/Power on-off button The Power button turns system on and goes into standby automatically. If the unit has been sitting unused for a while. Press momentarily to turn on the system or to exit from standby. Press and hold for at least 3-4 seconds to turn off the system. These settings can be changed.
	RFID reader trigger Through setting in Intel MCA SDK, press to wakeup built-in RFID and application program. RFID reader will be power down after certain time set by user if no more activities (button on handle).
	Barcode scanner trigger Through setting in Intel MCA SDK, press to wakeup built-in barcode reader and application program, press again to capture the image. Bar code reader will be power down after certain time set by user if no more activities (button on handle).
	Bluetooth On/Off button press to wakeup built-in Bluetooth module, Bluetooth module will be power down after certain time set by user if no more activities
	Camera Capture Through setting in Intel MCA SDK, press to wakeup built-in camera and application program, press again to capture the shot.
	Function Button Access to secondary operation of some buttons on the front bezel,user set up.
	Navigation & Enter Key 5 ways button for Up/Down/Left/Right/Enter.

	<p>Security key Similar function as pressing Ctrl+Alt+Delete on a standard keyboard.</p>
	<p>3 user programmable keys Press to launch specific program defined by user through Intel MCA SDK (software development kit)</p>

Function Keys

Press the Fn key first and then press the function key.

Function key	Description
Fn on + Down	Volume down
Fn on + Up	Volume up
Fn on + Left	Brightness decrease
Fn on + Right	Brightness increase
Fn on + button 3	Enable/ disable the 3G module
Fn on + Security key	To lock/unlock the touchscreen manually
*User may also choose to lock the touchscreen automatically after some idle time.	

Touch pen

You can use the touch pen to replace a mouse when using a Tablet PC. Store the pen in the pen holder when not in use. To put the pen in the pen holder, press it until it clicks into place. To remove the pen, press down on one end, grab the other end, and remove from the holder.



Disk Drives

Your Tablet PC comes with component for reading and writing (recording) information.

Hard Disk Drive

The hard disk provides high-capacity storage and fast access. Windows and most programs are stored here. Your Tablet PC identifies the hard disk drive as drive C. In order to protect your precious data, this shock-mounted 1.8" HDD features G sensor which "parks" the hard drive when it senses a dropping motion.

Operation instructions on the HDD protection application.

Click the HDD protection icon to launch HDD protection application.



You will see the program screen as:



“HDD protection OFF” is checked as default. If you are using default parameters, just click the “ON” tag under “HDD protection “ to activate hard disk protection function.

When HDD protection is activated, there will be a pop-up window shown on the screen once a free fall or abrupt motion detected.



At this situation, all disk access requests will be blocked. Certain application may detect some error if they set timer when accessing files. But others are just waiting their disk I/O to complete. User may release the hard disk by pressing OK button. Otherwise HDD will be released automatically after s preset time period (5 seconds by default) if no more free-fall or movements is detected.

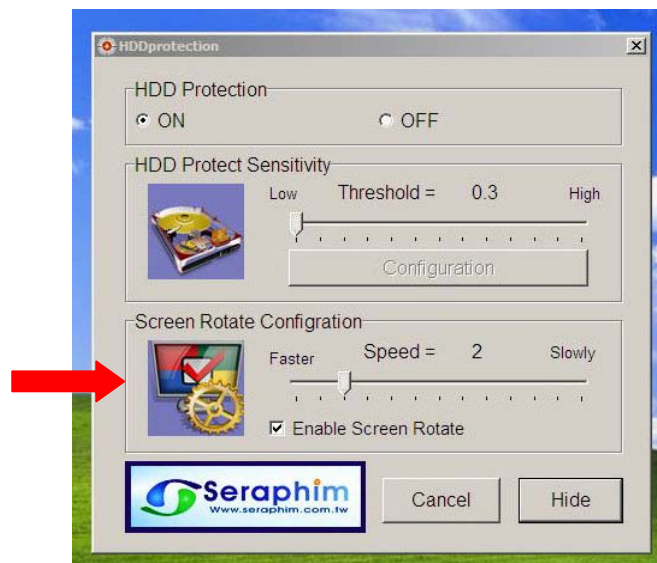
You may also find the HDD protection icon at the task bar.



When the icon shows green, it means that the HDD protection function is on. When the icon shows red, it means that the HDD protection function is off.

LCD Screen

- 10.4" XGA (1024x768) TFT LCD
 - LED Backlight
 - Luminance: 165 nit (minimum), 240 nit (typical)
 - Contrast ratio: 120 (minimum), 250 (typical)
 - Luminance uniformity: 60% (minimum)
 - Image retention (After image): 60 sec
-
- **Light Sensor**
Built in ambient light sensor to adjust the brightness of LCD. This will be performed automatically while in battery mode, and can be enabled/ disabled through setting in the BIOS.
 - **Screen Rotation**
This Tablet PC uses G sensor to switch Landscape/Portrait mode automatically when the machine turns. It works for 0° - 90° - 180° - 270°, and can be enabled/ disabled through the [HDDprotection software]. Default setting is enabled.



Touch Screen

- Analog resistive 4 wire type
- Anti-glare surface
- Light transmission 78%
- Palm rejection feature 500g/cm²
- cleanable with typical hospital cleaning products (80% or less alcohol must be supported)
- Calibration software will be provided for use by users
- Precision after calibration:

The offset is 1.5% or less than each direction of the active area

$$X=213 \times 1.5\% = 3.195(\text{mm})(\text{max})$$

$$Y=160.2 \times 1.5\% = 2.403(\text{mm})(\text{max})$$

- Calibration and precision will be retained at least 72 hours of full time use, except for below:
 1. Frequently abnormal power the unit off
 2. Reinstall the OS on the unit
 3. Expose the unit to the environment which has great temperature difference than the one performs the calibration
- Computer virus attack

- **Palm rejection**

This tablet PC features palm rejection function which refers to the digitizer's resistance to making the cursor jump when you inadvertently touch the screen with the palm of your hand.

- **To lock/unlock the touch screen**

To lock: 1. Manually (FN + SAS key)

2. Automatically (after some idle time presetting by user)

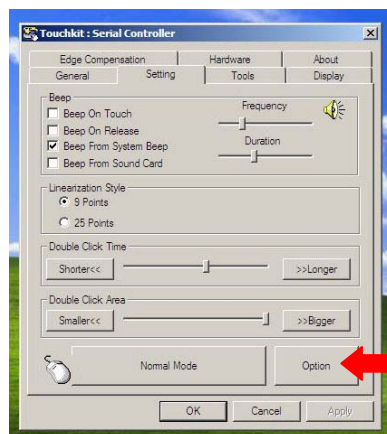
To unlock: Manually (FN + SAS key)

*If you want to lock the touch screen automatically, you need to follow following instruction:

(1) Double click the HDD protection icon to launch HDD protection application.

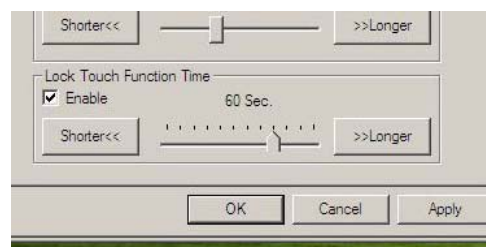


(2) Select [Setting] → [Option]



(3) You will find [Lock Touch Function Time] section on the bottom.

Select [Enable] to activate this function. You can also adjust the idle time in this section.

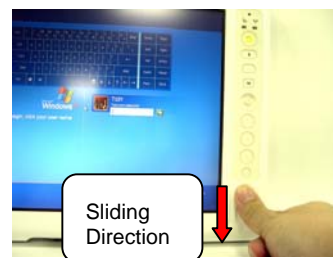


Information about Fingerprint function (Optional)

With use of fingerprint authentication, you can log on to Windows by only authenticating fingerprints that have previously been registered.

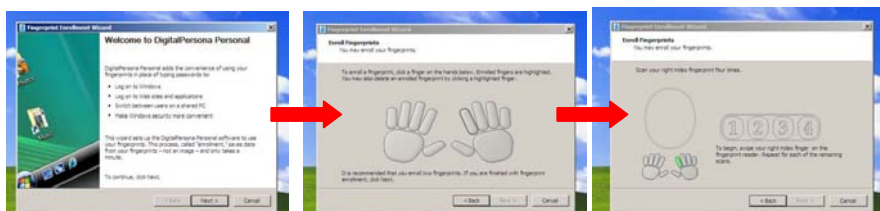


With fingerprint authentication, you can omit entering a user name and a password by just sliding your finger onto the fingerprint sensor at the time of logging in homepages or logging on Windows.



User will find an icon  on Windows task bar.

Please double click on it to execute fingerprint software.



*Up to 10 sets of fingerprint data can be saved in the system. Users that use fingerprint authentication can be added and deleted.

Information about Barcode scanner (Optional)

Barcode scanner with red ray scanning, supports 1D/2D barcode.

1D symbologies:

EAN/UPC, RSS, Code 39, Code 128, ISBN, ISBT, Interleaved, Matrix, Industrial and Standard 2 of 5, Codabar, Code 93/93i, Code 11, MSI, Plessey, Telepen, Postal Codes

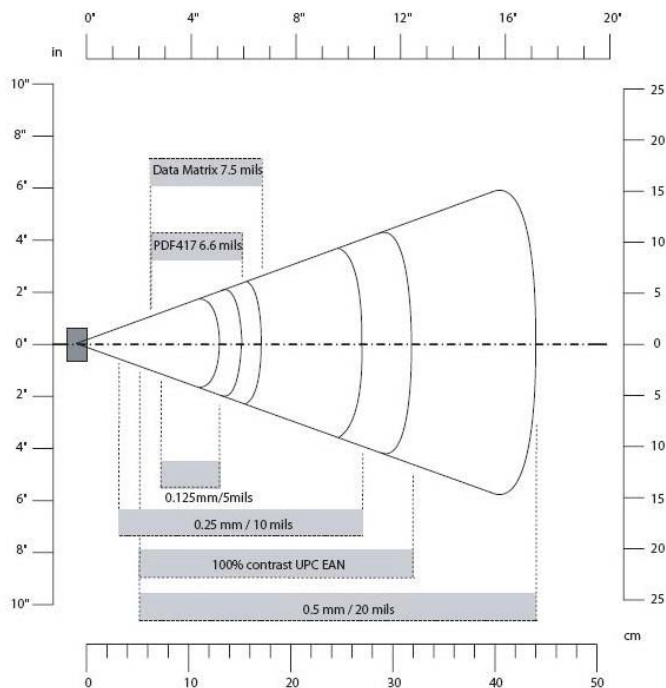
2D symbologies:

Data Matrix, PDF417, Micro PDF 417, Maxicode, QR, Aztec, EAN, UCC composite

Reading Distances

All distances are measured from the front of a non-integrated imager using Grade A symbologies. An exit window reduces reading distances by about 4%.

Typical Reading Distances



Typical Reading Distances: These distances are measured in an office environment (250 lux).

Typical Reading Distances

Symbology	Density	Minimum Distance	Maximum Distance
Code 39	0.125 mm (5 mils)	7.2 cm (2.8 in)	13.1 cm (5.1 in)
	0.20 mm (8 mils)	3.8 cm (1.5 in)	22.5 cm (8.8 in)
	0.25 mm (10 mils)	3.4 cm (1.3 in)	27 cm (10.5 in)
	0.5 mm (20 mils)	5 cm (2 in)	44 cm (17.2 in)
	1 mm (40 mils)	8 cm (3.1 in)	83 cm (32.4 in)
UPC/EAN	0.33 mm (13 mils)	5 cm (2 in)	32 cm (12.5 in)
Data Matrix	0.191 mm (7.5 mils)	6.3 cm (2.5 in)	17.3 cm (6.7 in)
	0.254 mm (10 mils)	4.8 cm (1.9 in)	22 cm (8.6 in)
	0.381 mm (15 mils)	*	29 cm (11.3 in)
PDF417	0.16 mm (6.6 mils)	6.2 cm (2.4 in)	15.4 cm (6 in)
	0.254 mm (10 mils)	4.5 cm (1.8 in)	23 cm (9 in)
	0.381 mm (15 mils)	4 cm (1.6 in)	37 cm (14.4 in)

*Minimum distance depends on symbology length and scan angle.

How to use the Barcode Scanner:

Please click on [**Barcode**] folder shown on Desktop. Then click on [**EA 15Demo**] program to execute Barcode scanner software.



Then press button on handle to turn on built-in barcode scanner, and it will be ready to read when there is a red light beam emitting from the device, and complete the reading when the light is off.. Barcode scanner will be power down after certain time set by user if no more activities.

