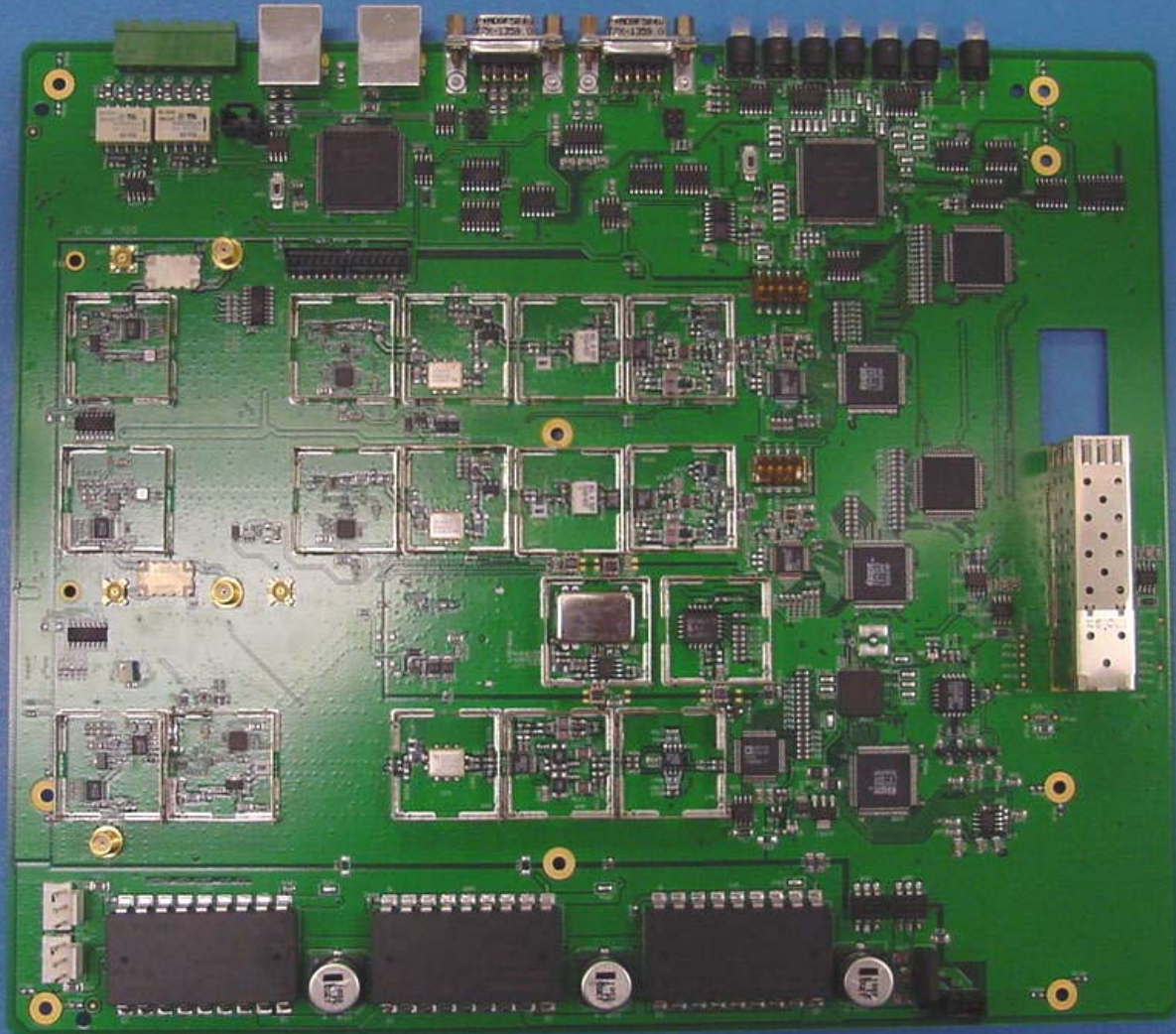
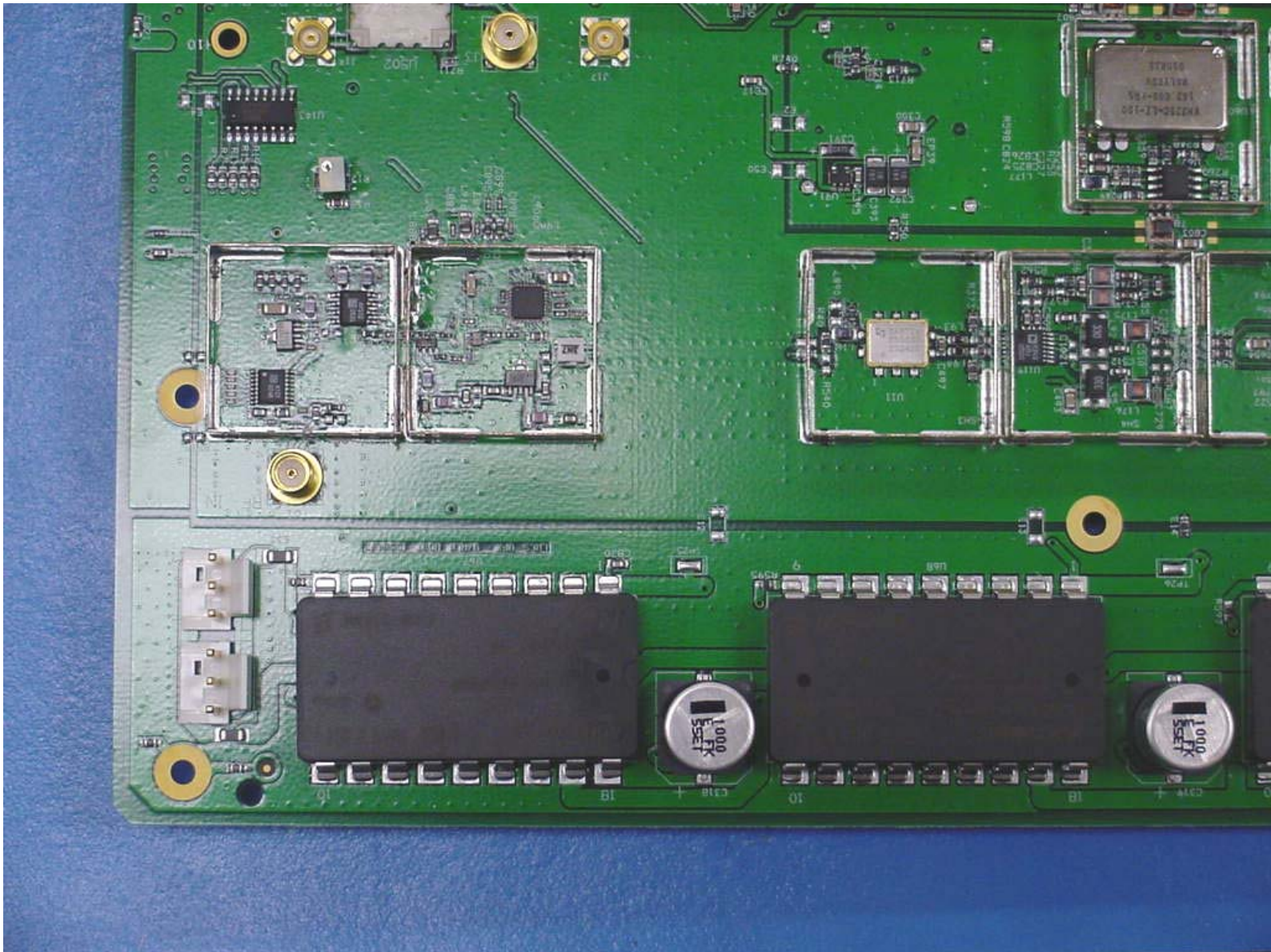


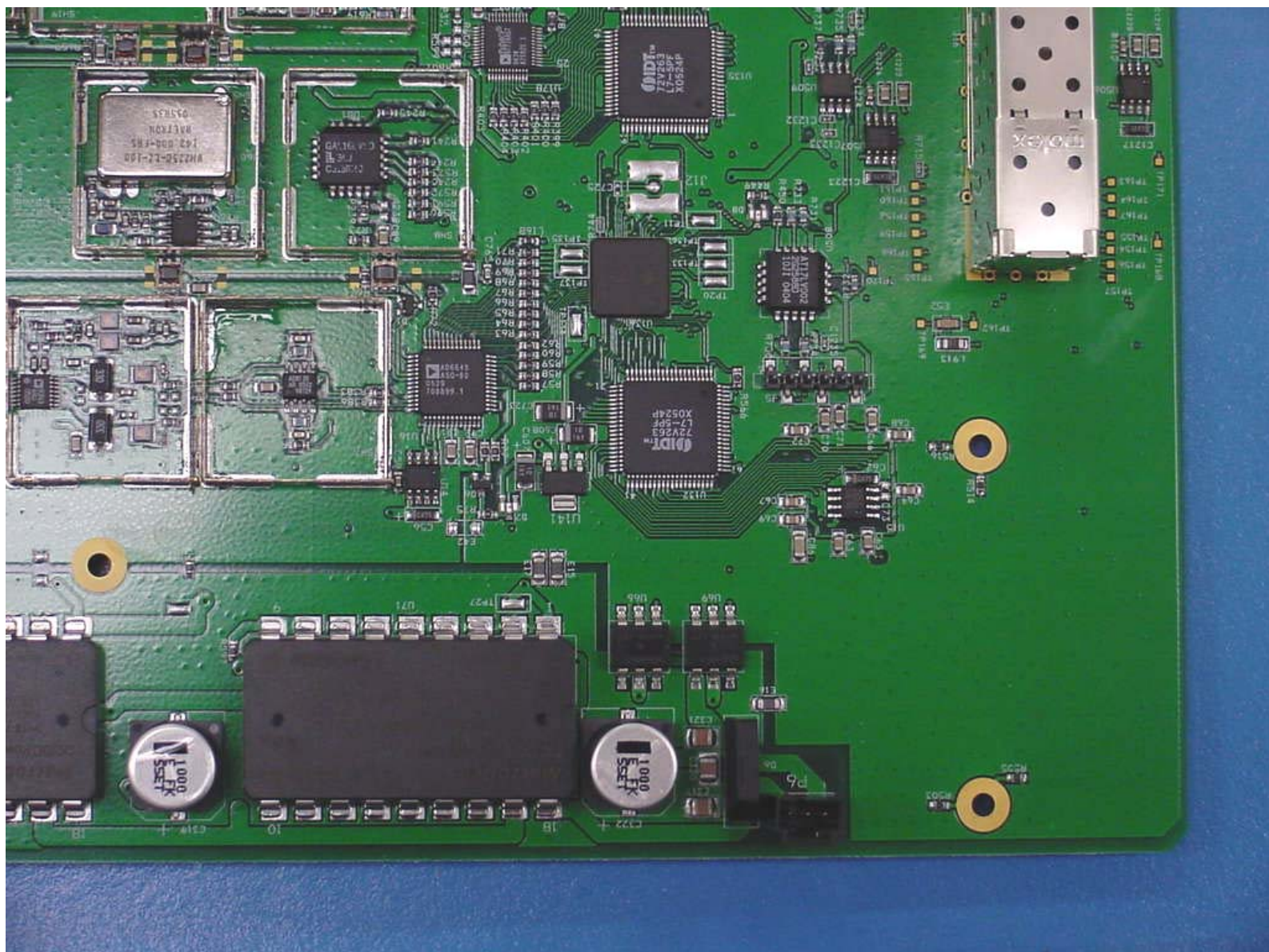
Digivance SCS 800 MHz and 1900 MHz System  
Host Unit  
Open Top View



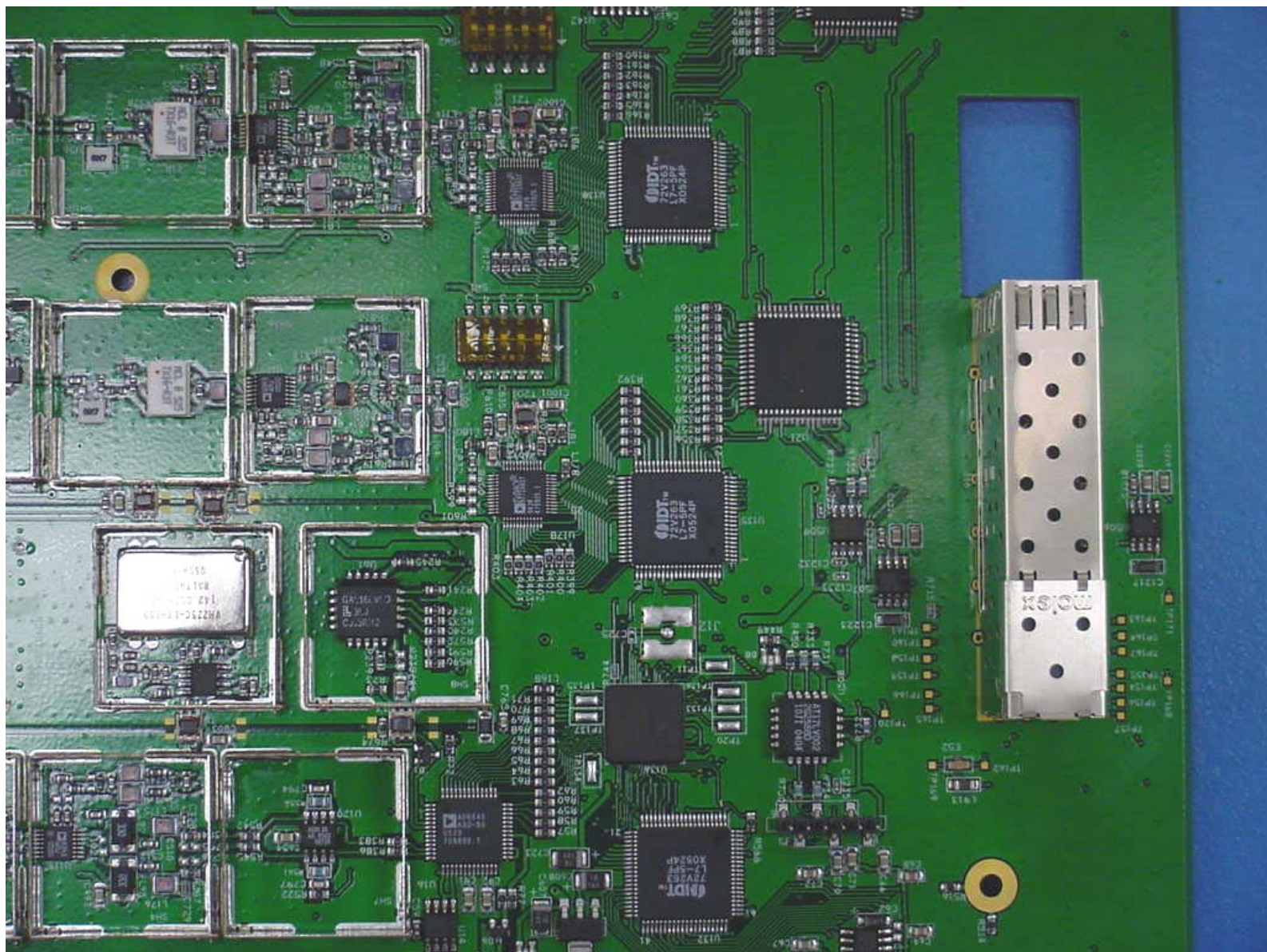
Digivance SCS 800 MHz and 1900 MHz System  
Host Board  
Top View



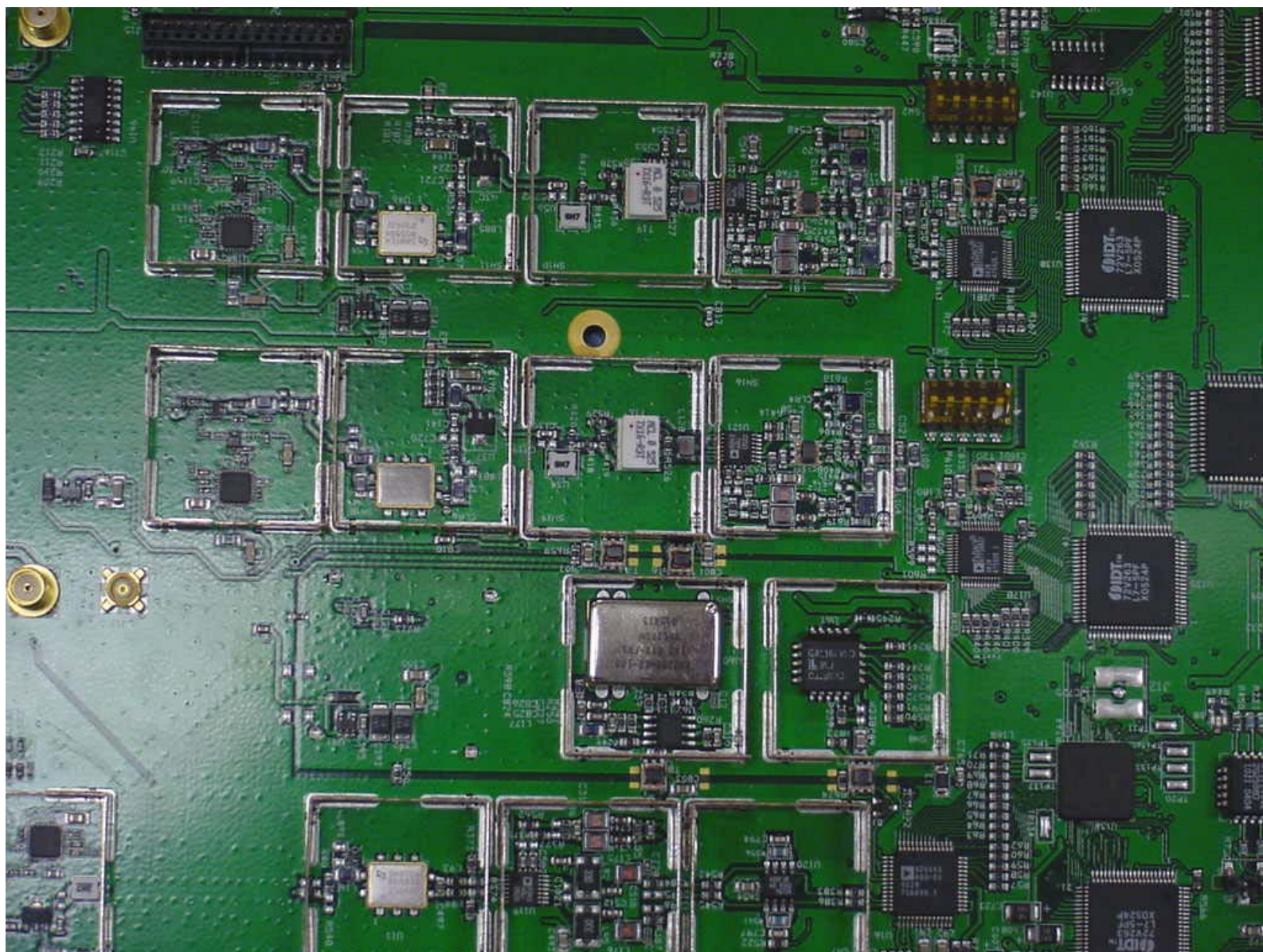
Digivance SCS 800 MHz and 1900 MHz System  
Host Board  
Top View 1



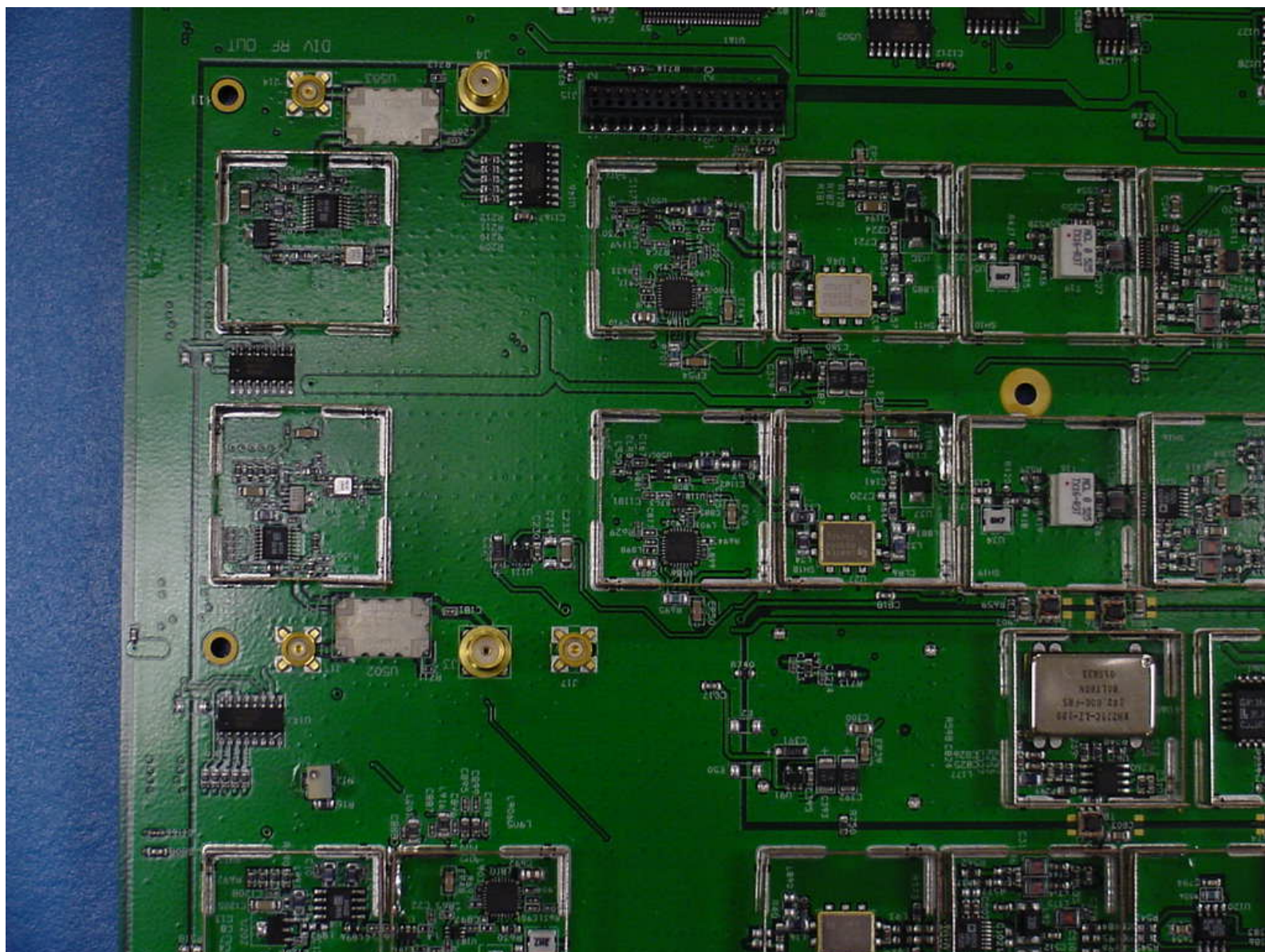
Digivance SCS 800 MHz and 1900 MHz System  
Host Board  
Top View 2



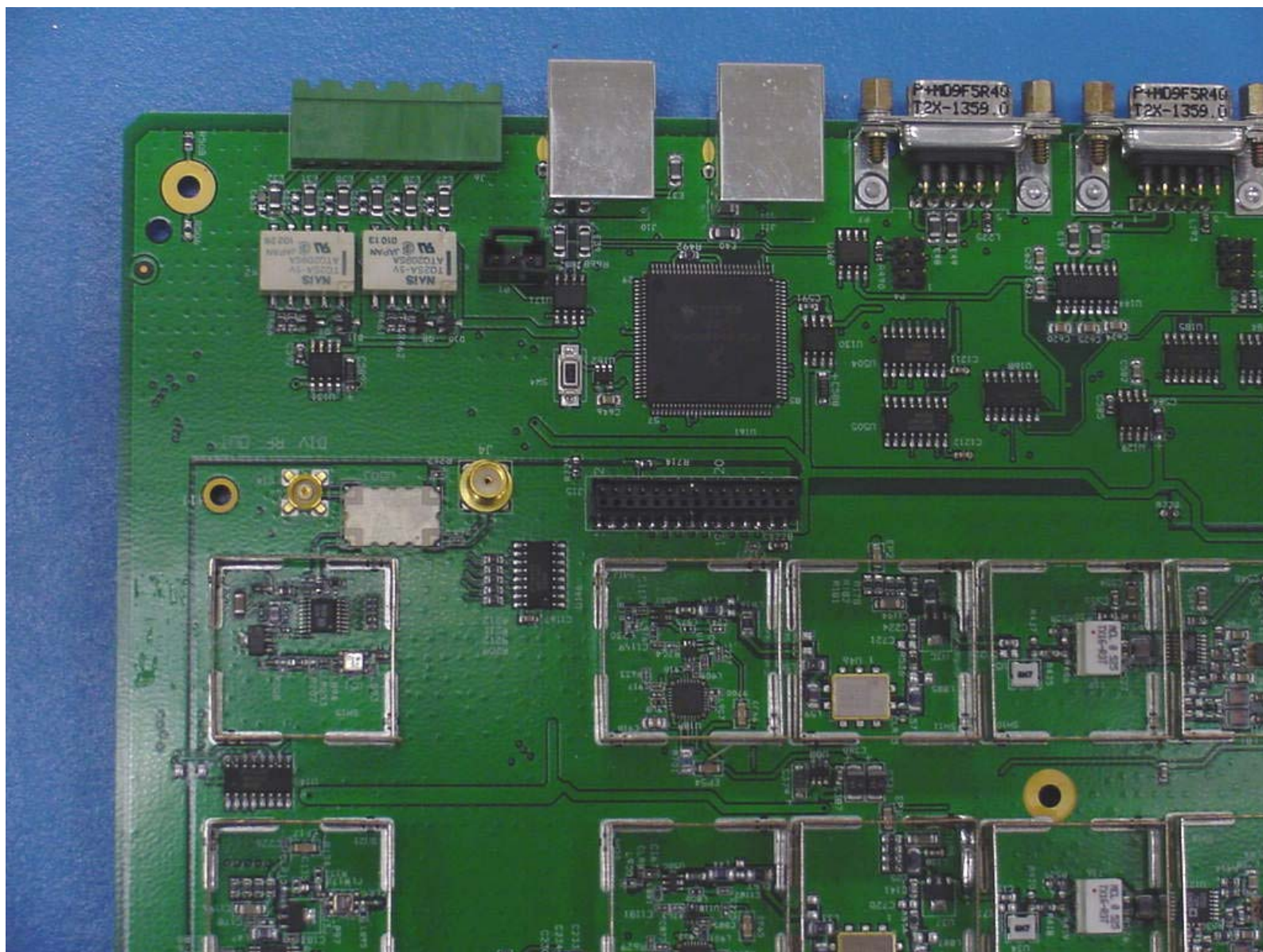
Digivance SCS 800 MHz and 1900 MHz System  
Host Board  
Top View 3



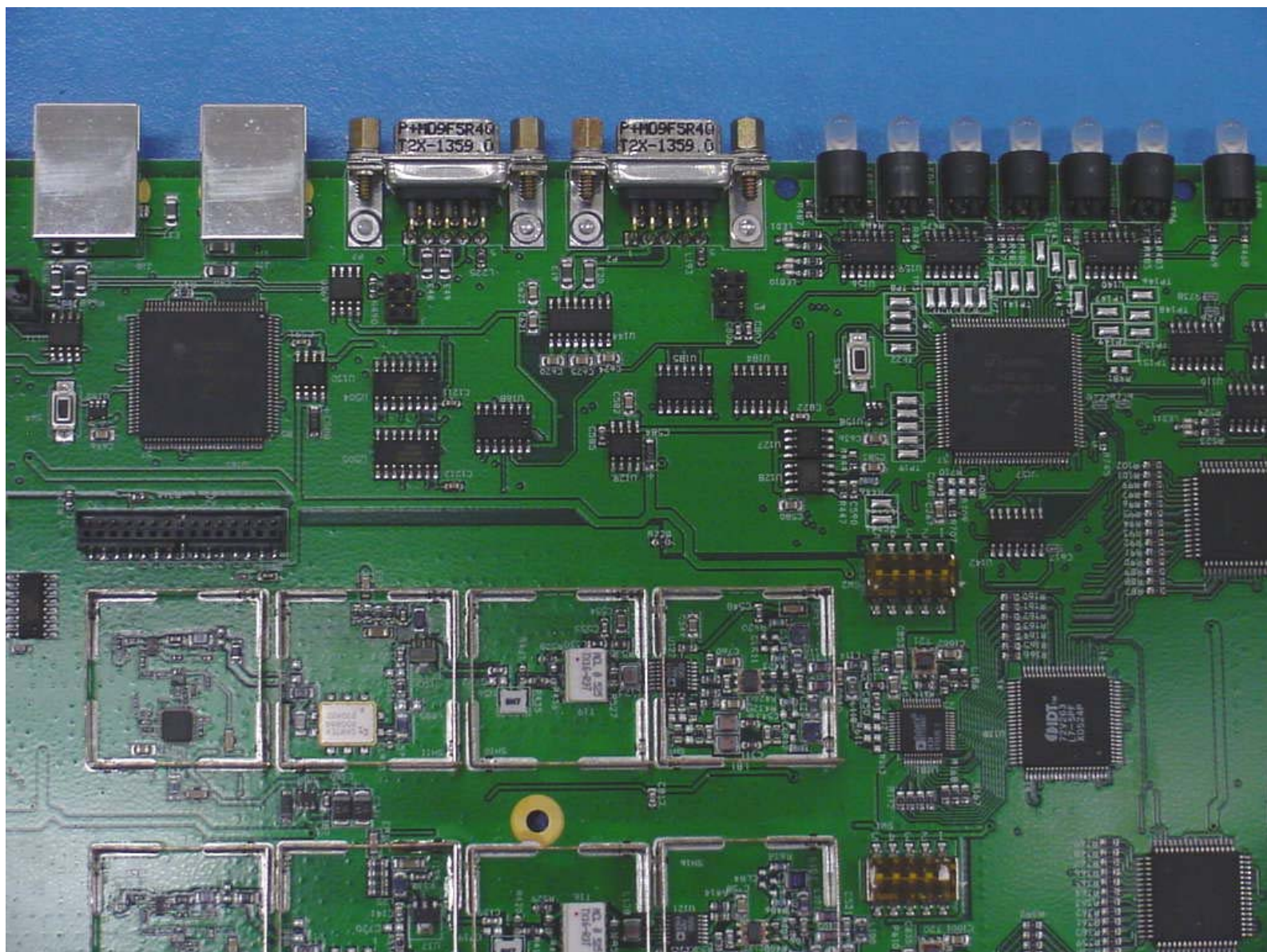
Digivance SCS 800 MHz and 1900 MHz System  
Host Board  
Top View 4



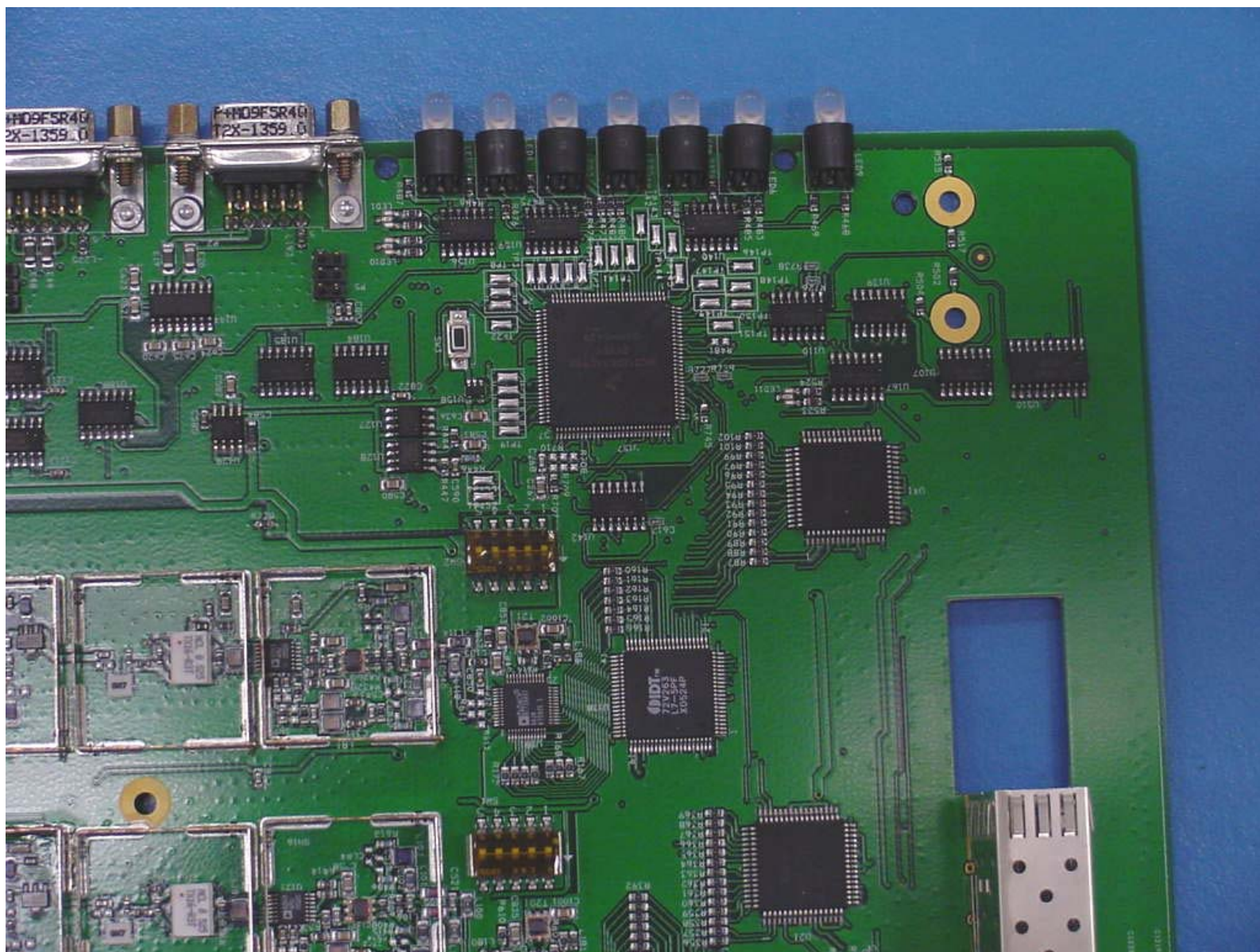
Digivance SCS 800 MHz and 1900 MHz System  
Host Board  
Top View 5



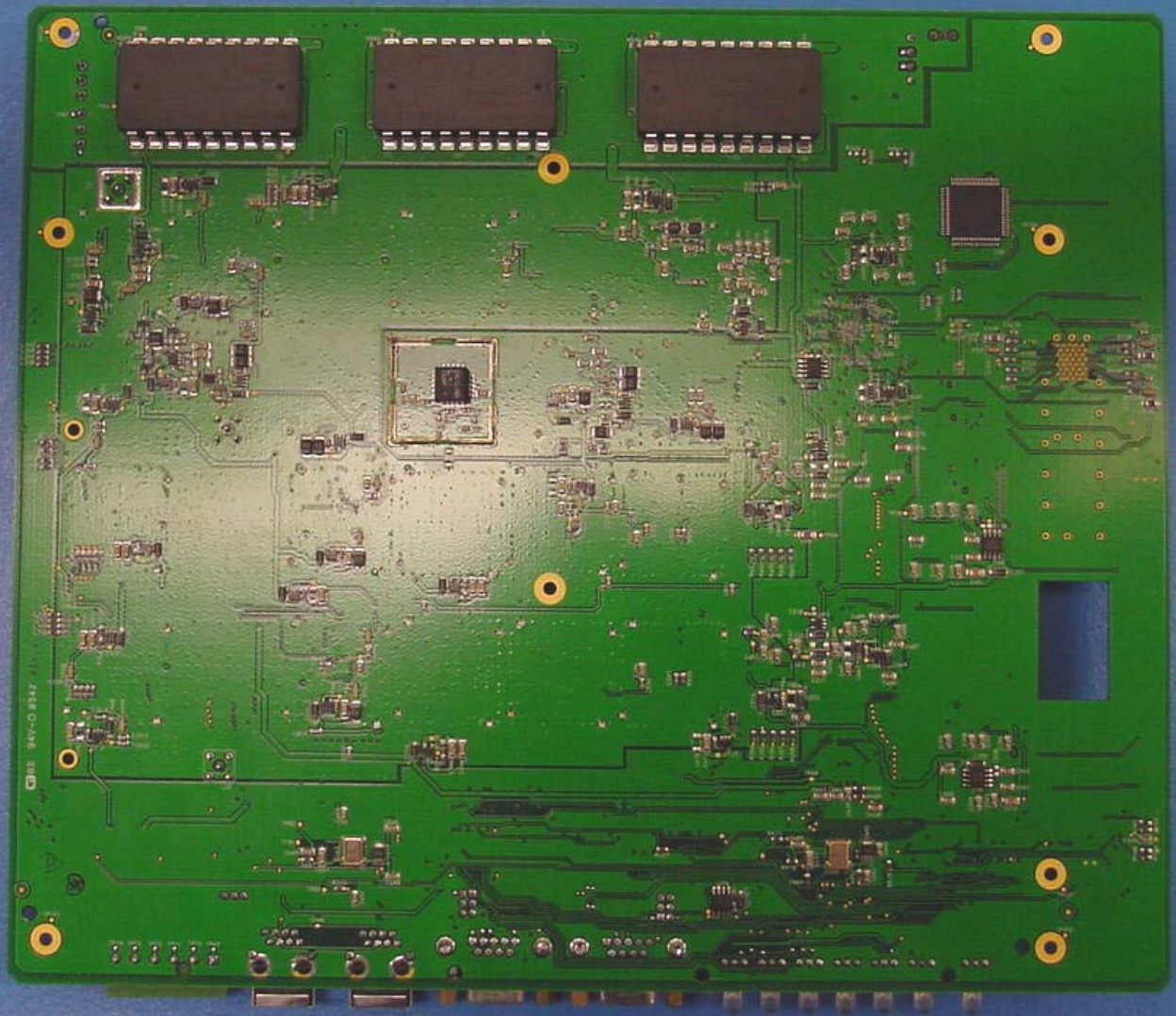
Digivance SCS 800 MHz and 1900 MHz System  
Host Board  
Top View 6



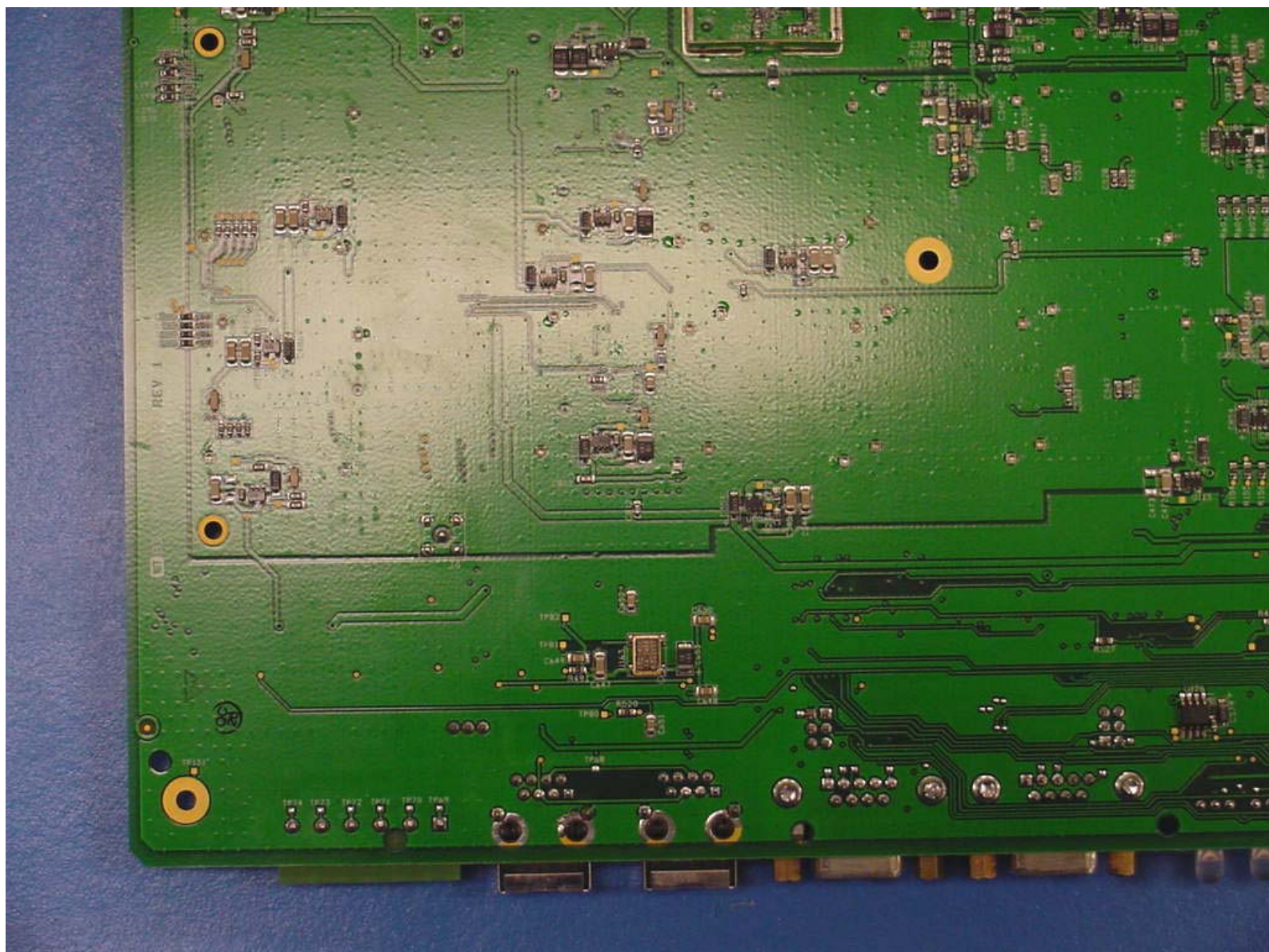
Digivance SCS 800 MHz and 1900 MHz System  
Host Board  
Top View 7



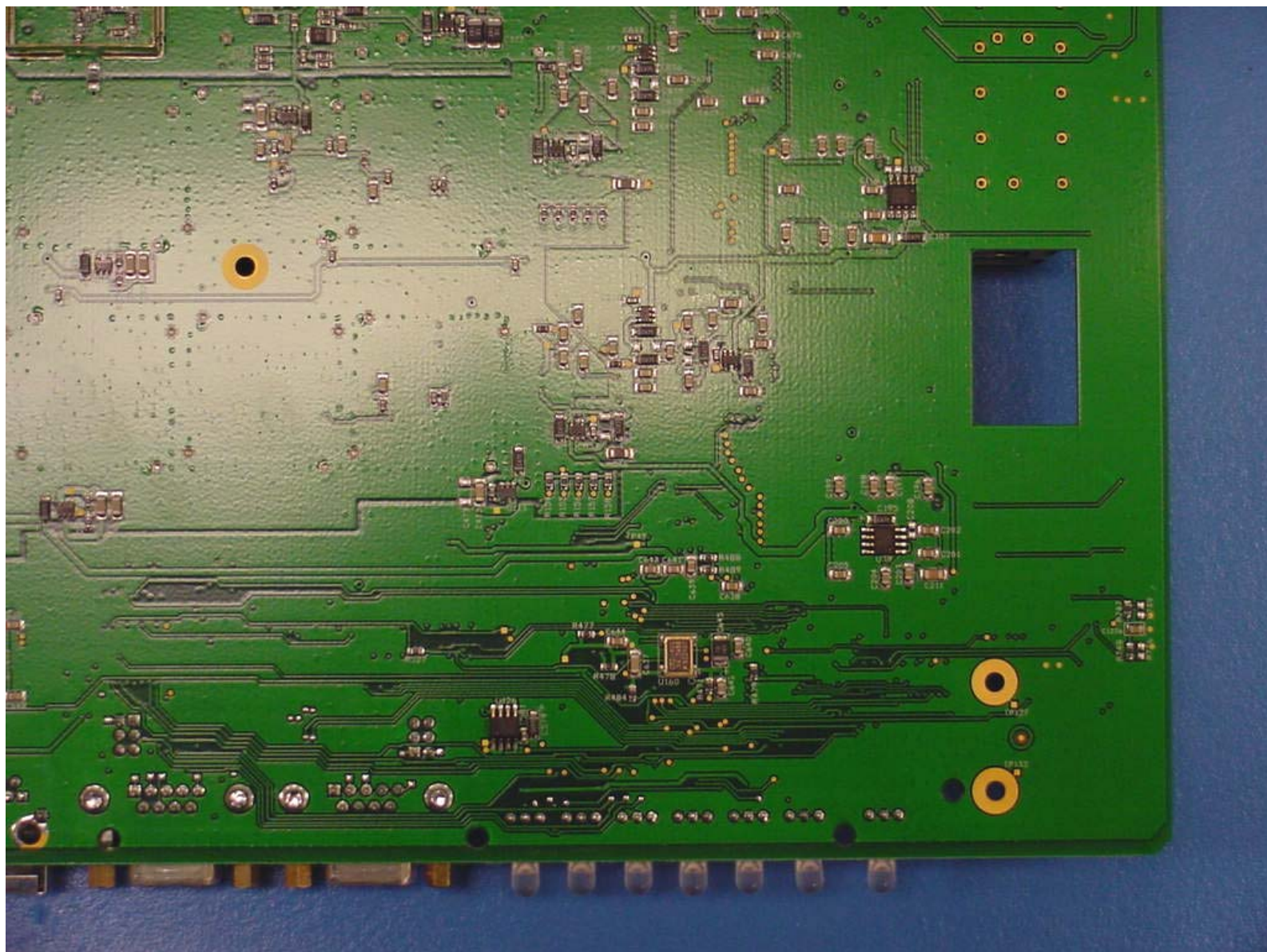
Digivance SCS 800 MHz and 1900 MHz System  
Host Board  
Top View 8



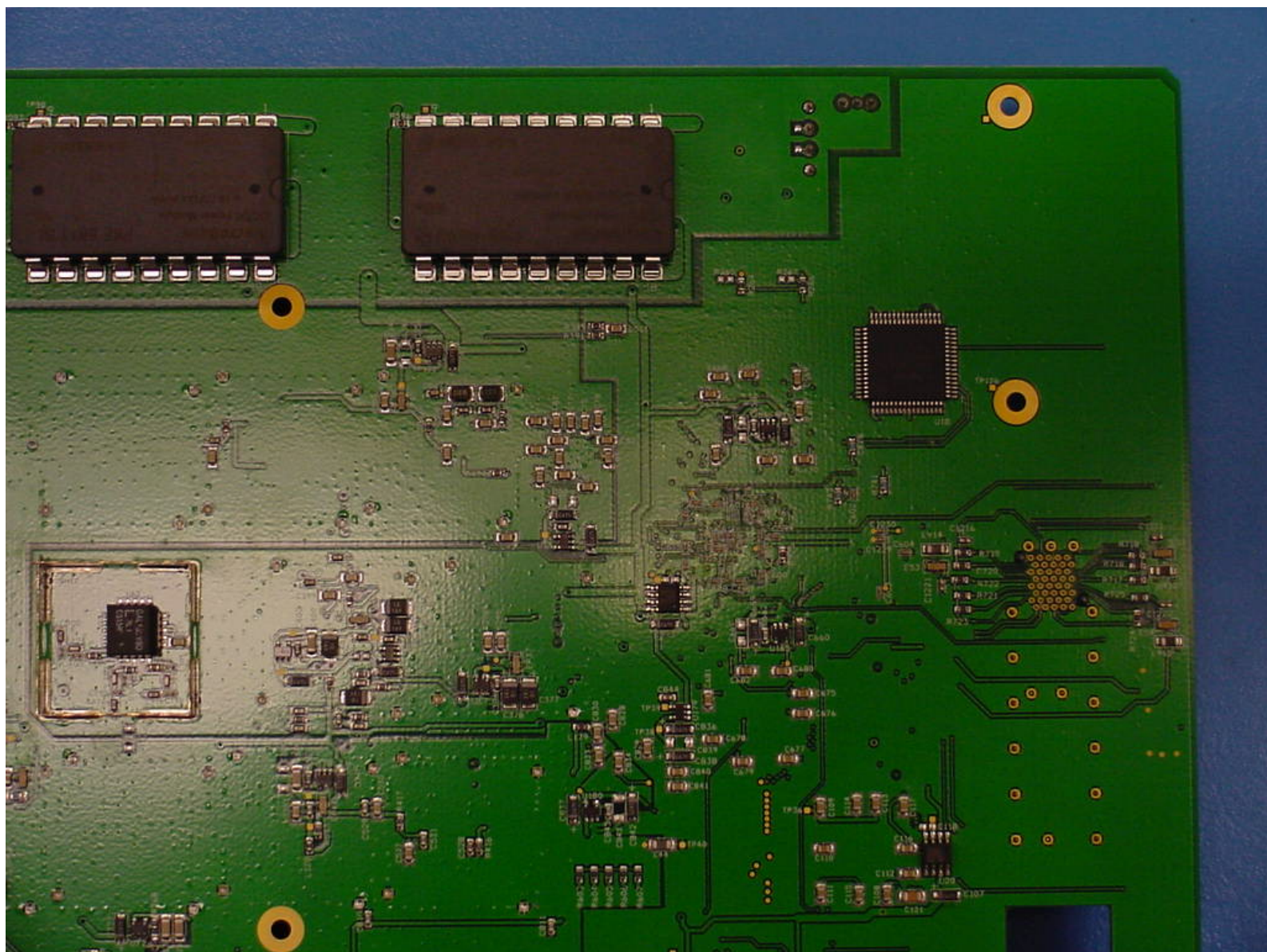
Digivance SCS 800 MHz and 1900 MHz System  
Host Board  
Bottom View



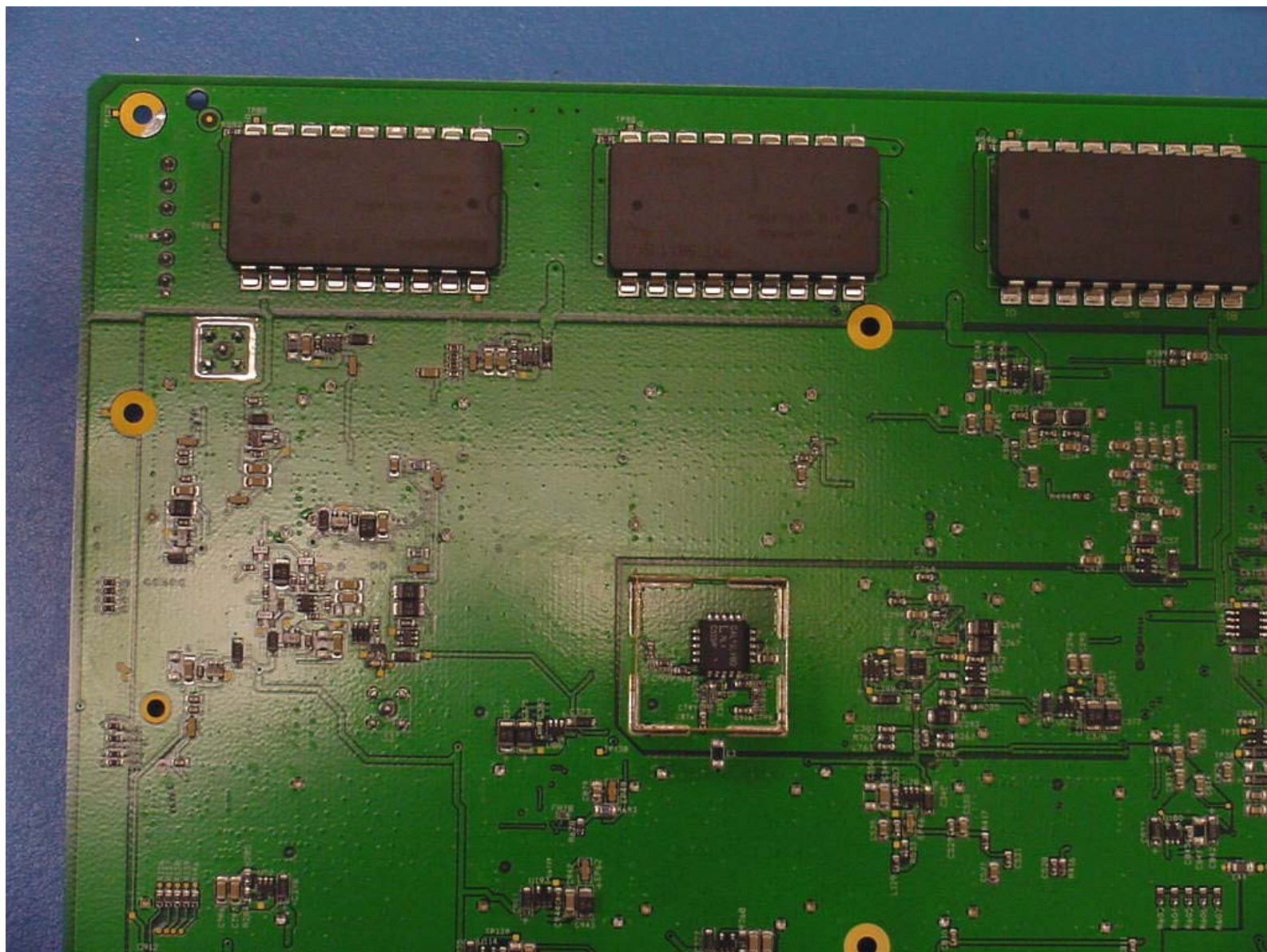
Digivance SCS 800 MHz and 1900 MHz System  
Host Board  
Bottom View 1



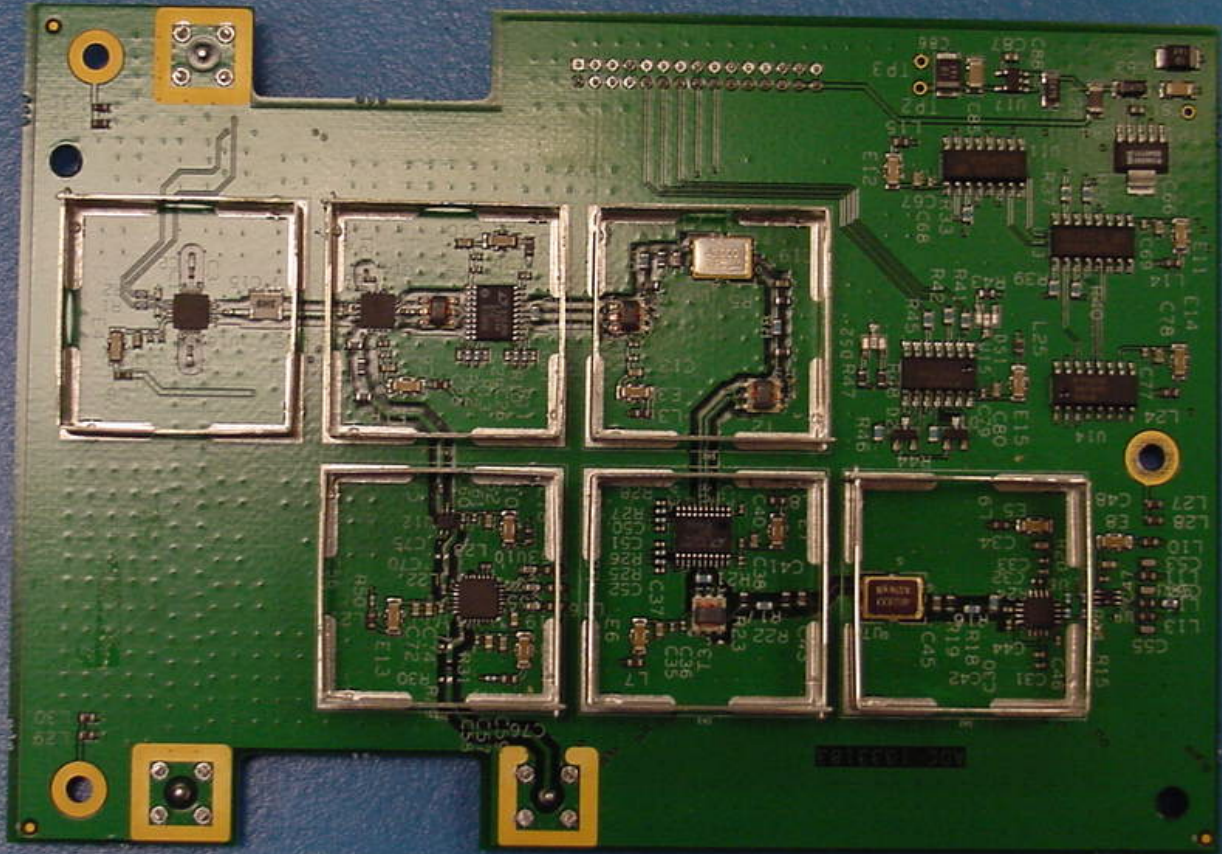
Digivance SCS 800 MHz and 1900 MHz System  
Host Board  
Bottom View 2



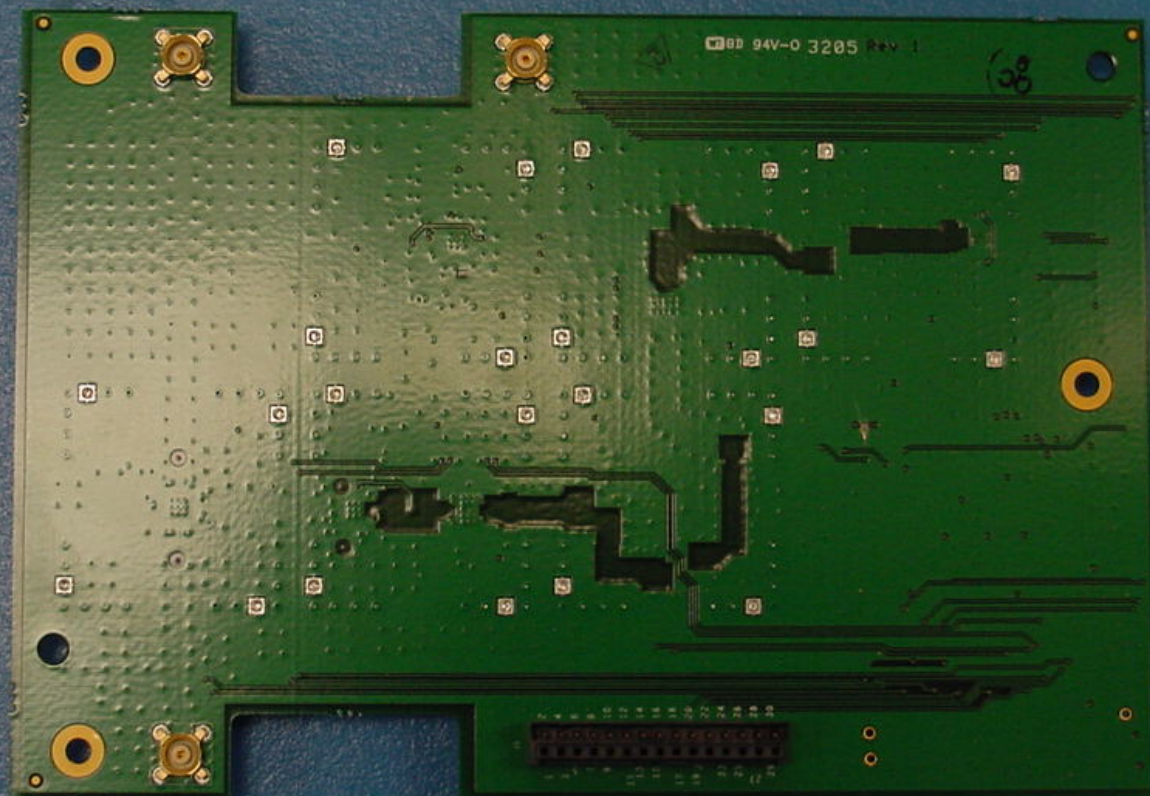
Digivance SCS 800 MHz and 1900 MHz System  
Host Board  
Bottom View 3



Digivance SCS 800 MHz and 1900 MHz System  
Host Board  
Bottom View 4



Digivance Host Reverse Link Monitor Board  
Host – Daughter Card  
Top View



Digivance Host Reverse Link Monitor Board  
Host – Daughter Card  
Bottom View