

**Messrs:** \_\_\_\_\_

# User's Guide

**FCC ID: F2QRFCOMKBTX / KEYBOARD:  
SCORPIUS RF/SCORPIUS MVII/SCORPIUS KIV  
FCC ID: F2QRFCOMPOTX / MOUSE:  
LYNX RF /LYNX KIV/LYNX LV/LYNX KV  
RECEIVER: RECEIVER RF/RECEIVER KI**

**Approval Signatures:**

**PM:** \_\_\_\_\_

**Electronic Engineer:** \_\_\_\_\_

**Mechanical Engineer:** \_\_\_\_\_

**Produce by:** \_\_\_\_\_



**QTRONIX CORPORATION**

9F, # 75, Sec. 1, Hsin Tai Wu Rd. Hsichih, Taipei Hsien, Taiwan, R.O.C. (Far East World Center-Bldg. A)  
Tel: (886-2) 2698-2566 Fax: (886-2) 2698-3133  
Email Address: qtronix@qtronix.com.tw World Wide Web: <http://www.qtronix.com.tw>

## **WARNING**

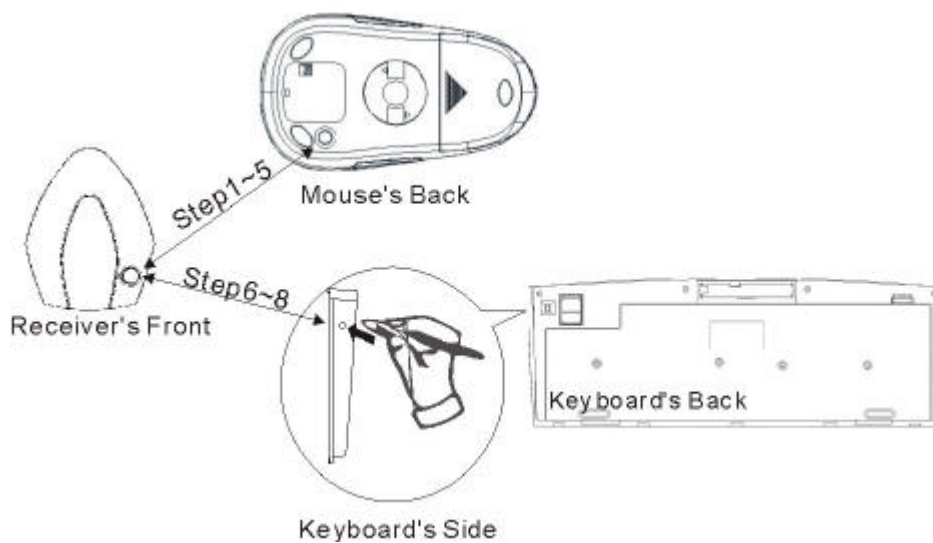
Note: This equipment has been tested and found to comply with the limits for a Class B digital device, pursuant to Part 15 of the FCC Rules. These limits are designed to provide reasonable protection. This equipment generates, uses and can radiated radio frequency energy and, if not installed and used in accordance with the instructions, may cause harmful interference to radio communications. However, there is no guarantee that interference will not occur in a particular installation. If this equipment does cause harmful interference to radio or television reception, which can be determined by turning the equipment off and on, the user is encouraged to try to correct the interference by one or more of the following measures:

- Reorient or relocate the receiving antenna.
- Increase the separation between the equipment and receiver.
- Connect the equipment into an outlet on a circuit different from that to which the receiver is connected.
- Consult the dealer or an experienced radio/TV technician for help.

Changes or modifications not expressly approved by the party responsible for compliance could void the user's authority to operate the equipment.

**This device complies with Part 15 of the FCC Rules. Operation is subject to the following two conditions: (1) this device may not cause harmful interference, and (2) this device must accept any interference received, including interference that may cause undesired operation.**

## Setup Guide



---

### Reset ID before using

- Step 1: Connect the receiver to your computer
- Step 2: Push the "CONNECT" button on the receiver.
- Step 3: Push the button on the back of the mouse (in upper left corner).  
Please note that this step must be completed after Step 2 within 8 seconds.
- Step 4: Move pointer, when the receiver and the mouse are connected, the LED will blink, the setting has been completed.
- Step 5: Please go back to Step 2 if the LED does not behave as that in Step 4.
- Step 6: Push the "CONNECT" button on the receiver.
- Step 7: Push the button on the back of the keyboard (in upper left corner). Please note that this step must be completed after Step 6 within 8 seconds.
- Step 8: Push "Space" key, when the receiver and the keyboard are connected, the LED will blink, the setting has been completed.
- Note: If same ID is used by other users and causes interference, just repeat this reset procedure.
-

# GENERAL

## Description

keyboard has an enhanced NedMedia design and can work with any IBM PC PS/2 compatible computer. Utilizing the latest in rubber mechanical key switch technology, Keyboard offers durability and style that will enhance any system for years to come. 21 Extra rubber buttons (Windows ACPI keys included) let keyboard link more closer with PC, touch one button to make some functions work immediately.

## Features

- Radio Frequency technology
- Netmedia for easy Internet and Multimedia control
- Low power consumption
- 400dpi resolution
- High quality Rubber-Membrane key switches
- Tactile key stroke
- 1,000,000 life cycles per switch
- 104,105,106,107,109 key layout

## Package Contents:

- color box
  - Package dimension(L\*W\*H): 485\*315\*50 mm
- Pcs /Carton: 10pcs
- Package contents
  - RF Keyboard
  - RF Mouse
  - Receiver
  - 2AAA & 2AA batteries
  - 12 CD-ROM driver
  - User Manual

## System requirements

- Designed to work with IBM PC PS/2 Compatible Computer
- Perfected for using with Windows® 98 / 2000 / ME / XP.

## Electrical specification

Environmental of Temperatures					
Operating temperature		0 to 50 .			
Non-operation temperature		-10 to 60 .			
Humidity Test					
Condition temperature		25C~55C			
Operating humidity		10% to 85%			
Non-operation Humidity		10% to 85%			
Heat storage		60 , 24Hours			
Cool storage		-10 , 24Hours			
Humidity storage		85%, 24Hours			
Performance specification/ Keyboard					
Switch Life		1,000,000 cycle life			
Performance specification/ Mouse					
X,Y Encoder		Opto-Mechanical			
Scroll Encoder		Mechanical			
Switch Life		1,000,000 cycle life			
Scroll Encode Life		100,000 cycle life			
Hardware Resolution		400dpi			
Power Requirements					
Keyboard	Mode	Operation Voltage	Power Consumption		
			Max	Nom	Min
	Working Mode	3V		7mA	
	Sleeping Mode	3V	0.14	0.1mA	0.06
	Operation voltage	3.5V~1.5V			
Mouse	Working Mode	3V		10mA	
	Sleeping Mode	3V	3mA	0.2mA	0.16mA
	Operation voltage	3.5V~1.5V			
Receive	Power Consumption	30mA			
	Operation Voltage	5Vdc+5%			
EMI / EMC					
FCC		The mouse shall meet the requirements of FCC Part 15 for Class B Computing Devices.			
CE		1.EN55022: 1998 Class B			

	2.EN 61000-3-2: 1995+A1: 1998+A2: 1998 3.EN 61000-3-3:1995 4.EN 55024; 1998
BSMI	CNS13438.
ESD	Contact discharge: $\pm 2$ / $\pm 4$ KV Air Discharge: +2/ +4 / $\pm 6$ / $\pm 8$ KV
<b>Environmental of electrical</b>	
Shock test	The mouse shall withstand a shock equal to 20G forces, half sine wave for 11 msec duration in all three (3) orthogonal axes.
Drop test (unpackage)	Drop the mouse from 60 cm height above a wood board 15mm thick placed on a concrete floor, 3 times in the same direction.

## Mechanical specification

Material			
Cover	HIPS		
Key top	HIPS		
Body Weight & Dimension	Keyboard	Mouse	Receiver
Weight	800g	100.5grams	88.5grams
Length	475.5mm	130.1mm	102.8mm
Width	172mm	73.1mm	82.2mm
High	32mm	39.5 mm	30.3mm
Body colors	Keyboard	Mouse	Receiver
Upper color	3361	877C	3361
Lower color	3361	Blue (Pantone: 8181C )	3361
Key color	3361	-	-
Left and Right key color	-	Blue (Pantone: 8181C)	-
Roller color	-	Cool Gray 10C	-
Cable color	-	-	3361
Windows	-	-	SP237
Rubber key color	Grey	Grey	Grey
Model Label color	White	White	White
Rubber/ Membrane			
Rubber Dome contact Resister	100 (max)		
Membrane Contact Resister	100		
Membrane Open Resister	10M		
Box Dimension:			
Length	485mm		
Width	315mm		
High	50mm		

## RF SPEC

	Keyboard	Mouse	Receive
FREQUENCY	27.092MHZ	27.042MHZ	26.64MHZ/26.59MHZ
MODULATION	FSK	FSK	FSK
ID	256	256	256
DATA RATE	4.8K	4.8K	4.8K
POWER LEVEL	0 dB	0 dB	
SENSITIVITY			-90 dBm
TRANSMISSION DISTANCE	1.5M	1.5M	1.5M