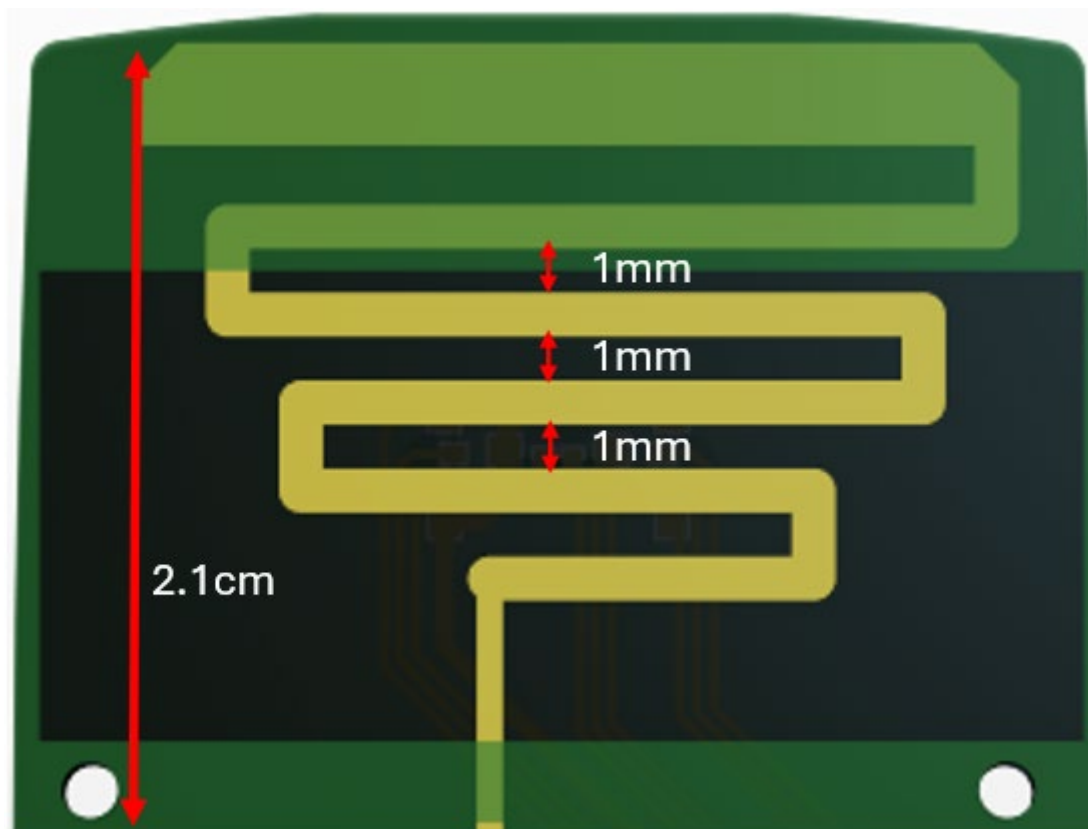


Meandering Monopole Trace Antenna

This is a low-cost standard design meandering monopole trace antenna designed for a wireless communication system of 915MHz.

Specifications:

- Frequency range: 915MHz \pm 20MHz
- Input impedance: 50 ohms.
- Peak Transmit Power: 24 dBm
- Gain: 2.15dBi
- Polarization: Vertical
- Interface: PCB Trace
- Dimensions:
 - Pitch: 1mm.
 - Height: 2.1cm



3D View

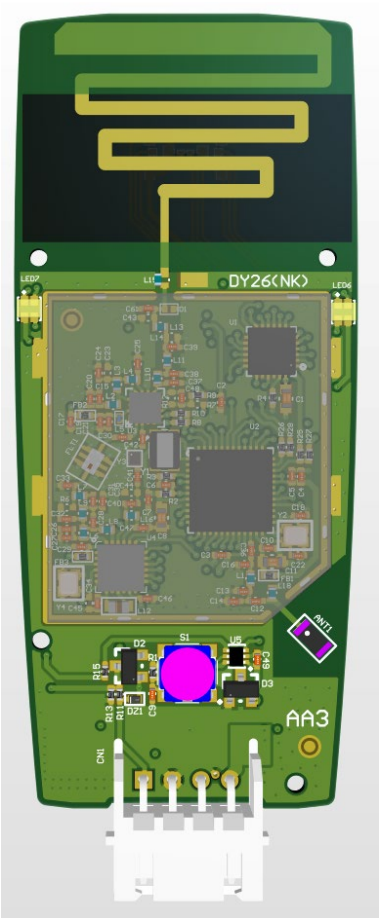


Figure 1 PCB 3D View

Radiation Patterns 902MHZ to 930MHZ (915MHZ)

The radiation pattern is the graphical representation of the radiation properties of the antenna as a function of space. The antenna pattern describes how the antenna radiates energy into space, or how it receives energy from space.

