



500W ERT® Module Remote Installation Guide

**Includes OpenWay Riva® and Gen™X Network
Information**

500W ERT Module Remote Installation Guide

30 June 2021

815-0005-00 REV 008

Copyright © 2021 Itron, Inc. All rights reserved.

Confidentiality Notice

Confidential Information of Itron®, Inc., provided under nondisclosure obligations. The information contained herein is proprietary and confidential and is being provided subject to the condition that (i) it be held in confidence except to the extent required otherwise by law and (ii) it will be used only for the purposes described herein. Any third party that is given access to this information shall be similarly bound in writing.

Trademark Notice

Itron is a registered trademark of Itron, Inc.

All other product names and logos in this documentation are used for identification purposes only and may be trademarks or registered trademarks of their respective companies.

For more information about Itron or Itron products, go to www.itron.com.

If you have questions or comments about a software or hardware product, contact Itron Technical Support Services.

Contact

Email: support@itron.com

Itron Access: <https://access.itron.com>

Telephone Itron Technical Support North America: 1-877-487-6602

For technical support contact information by region, go to www.itron.com and select your country and language.

For suggestions, questions, or other feedback concerning Itron product documentation, contact us at: ItronDocumentation@itron.com

Contents

New in This Document	5
1 Important Safety and Compliance Information	6
USA, FCC Part 15 Spectrum Compliance	6
USA, FCC Class B-Part 15	6
Modifications and Repairs	6
Canada, ISED Spectrum Compliance	7
RF Exposure (FCC/ISED)	7
Australia, ACMA Spectrum Compliance	7
New Zealand, RCM Spectrum Compliance	7
Lithium Battery Safety	7
Modifications and Repairs	8
Disconnecting Power	8
Electromagnetic Compatibility	8
Electrostatic Discharge	8
Do Not Drop	8
2 About the 500W ERT Module	9
OpenWay® Riva	9
Gen™5	9
Description	10
Related Documents	10
Itron Security Manager (ISM)	10
Battery Life	11
Low Battery	11
Transmission Modes	11
Mobile Mode	11
Network Mode	11
Operating Modes	12
Firmware Functionality	13
OpenWay Riva	13

GenX	14
Events and Alarms	15
Mobile Mode	15
Network Mode	15
3 Initializing and Connecting	17
Programming	17
Encoder-type Register Connections	18
Pulser-type Register Connections	20
Connecting Using an Extension Cable	20
Verifying Operation	20
4 Installing the Remote 500W ERT Module	22
Mounting Accessories	22
Installing the Module Cable Strain Relief	23
Securing the Cable Strain Relief	23
Installing the Backplate	25
Attaching the Backplate	25
Pipe Mount Installation	27
Mounting the Pipe Bracket on a Vertical Pipe	27
OpenWay Riva Leak Sensor (OLS) Installation	30
Connecting the SET Valve	30
Completing the SET Valve Wire Connections	31
Remote Mount Installation	31
Installing on a Flat Surface	31
Direct-mounting to the Meter Register	33
Direct-mounting on the ABB Scancoder, InVision, or Digital Direct-Mount	33
Direct-mounting to a Badger Direct-Mount Register	35
5 Completing Gel-cap Connections Using the Itron Splice Kit	40
Required Materials	40
6 Using the Itron Cable Armor	43
Installing the Itron Cable Armor	43
7 Troubleshooting	45

New in This Document

Revision	Date	Description
008	June 2021	■ Updated the table in Description on page 10 to include ERW-1601-007. Also updated description for ERW-1601-002.
007	April 2021	■ Added New Zealand, RCM Spectrum Compliance on page 7
006	February 2021	■ Updated document to apply to modules on both GenX and OpenWay Riva networks
005	February 2021	■ Updated Firmware Functionality on page 13 versions for GSR 5.1 and 5.3 support
004	January 2021	■ Added GSR 5.3 compatibility information to Firmware Functionality on page 13
003	April 2020	■ Updated reference in OpenWay Riva Leak Sensor (OLS) Installation on page 30
002	March 2020	■ Added GSR 5.1 compatibility information to Firmware Functionality on page 13
001	January 2020	■ Added Australia, ACMA Spectrum Compliance on page 7
000	July 2019	First publication.

1

Important Safety and Compliance Information

This section provides important information for your safety and product compliance.

USA, FCC Part 15 Spectrum Compliance

This device complies with Part 15 of the FCC Rules. These limits are designed to provide reasonable protection against harmful interference in a residential installation.

Operation is subject to the following two conditions:

- This device may not cause harmful interference.
- This device must accept any interference that may cause undesirable operation.

This device must be installed to provide a separation distance of at least 20 centimeters (7.9 inches) from all persons to be compliant with regulatory RF exposure.

USA, FCC Class B-Part 15

This equipment has been tested and found to comply with the limits for a Class B digital device, pursuant to Part 15 of the FCC Rules. These limits are designed to provide reasonable protection against harmful interference in a residential installation. This equipment generates, uses, and can radiate radio frequency energy and, if not installed and used in accordance with the instructions, may cause harmful interference to radio communications. However, there is no guarantee that interference will not occur in a particular installation. If this equipment does cause harmful interference to radio or television reception, which can be determined by turning the equipment off and on, the user is encouraged to try to correct the interference by one or more of the following measures:

- Reorient or relocate the receiving antenna.
- Increase the separation between the equipment and receiver.
- Connect the equipment into an outlet on a circuit different from that to which the receiver is connected.
- Consult the dealer or an experienced radio or TV technician for help.

Modifications and Repairs

To ensure system performance, this device and antenna shall not be changed or modified without the express approval of Itron. Per FCC and ISSED rules, unapproved modifications or operation beyond or in conflict with these instructions for use could void the user's authority to operate the equipment.

Canada, ISED Spectrum Compliance

Compliance Statement Canada	Déclaration de Conformité
<p>This device complies with Innovation, Science and Economic Development Canada (ISED) license-exempt RSS standard(s). Operation is subject to the following two conditions: (1) this device may not cause interference, (2) this device must accept any interference, including interference that may cause undesired operation of the device.</p> <p>Under Innovation, Science and Economic Development Canada (ISED) regulations, this radio transmitter may only operate using an antenna of a type and maximum (or lesser) gain approved for the transmitter by Industry Canada. To reduce potential radio interference to other users, the antenna type and its gain should be so chosen that the equivalent isotropically radiated power (e.i.r.p.) is not more than that necessary for successful communication.</p>	<p>Le présent appareil est conforme aux CNR d'Industrie Canada applicables aux appareils radio exempts de licence. L'exploitation est autorisée aux deux conditions suivantes: (1) l'appareil ne doit pas produire de brouillage, (2) l'utilisateur de l'appareil doit accepter tout brouillage radioélectrique subi, même si le brouillage est susceptible d'en compromettre le fonctionnement.</p> <p>Conformément à la réglementation d'Industrie Canada, le présent émetteur radio peut fonctionner avec une antenne d'un type et d'un gain maximal (ou inférieur) approuvé pour l'émetteur par Industrie Canada. Dans le but de réduire les risques de brouillage radioélectrique à l'intention des autres utilisateurs, il faut choisir le type d'antenne et son gain de sorte que la puissance isotrope rayonnée équivalente (p.i.r.e.) ne dépasse pas l'intensité nécessaire à l'établissement d'une communication satisfaisante.</p>

RF Exposure (FCC/ISED)

This equipment complies with radiation exposure limits set forth for an uncontrolled environment. This equipment should be installed and operated with minimum distance 20 cm between the radiator and your body. This transmitter must not be co-located or operating in conjunction with any other antenna or transmitter.

Cet équipement est conforme aux limites d'exposition aux radiations dans un environnement non contrôlé. Cet équipement doit être installé et utilisé à distance minimum de 20 cm entre le radiateur et votre corps. Cet émetteur ne doit pas être co-localisées ou opérant en conjonction avec tout autre antenne ou transmetteur.

Australia, ACMA Spectrum Compliance

When this device is sold and shipped to Australia, it is configured and labeled accordingly to be compliant with ACMA Standards for the Radio, EMC and RF Exposure. This includes standard AS/NZS 4268 RF spectrum standard for frequency and power out.

New Zealand, RCM Spectrum Compliance

Note: The Remote 500W ERT Module is not approved for use in New Zealand.

Lithium Battery Safety



Warning! Follow these procedures to avoid injury to yourself or others.

- The lithium battery may cause a fire or chemical burn if it is not disposed of properly.
- Do not recharge, disassemble, heat above 212°Fahrenheit (100°C Celsius), crush, expose to water, or incinerate the lithium battery. Fire, explosion, and severe burn hazard.
- The battery used in this device may present a risk of fire or chemical burn if mistreated.
- Keep the lithium battery away from children.

Modifications and Repairs



Warning! This unit cannot be modified and is not repairable. Attempts to modify or repair this module will void the warranty.

Disconnecting Power



Warning! Qualified technicians: during service, disconnect power to prevent ignition of flammable or combustible atmospheres.

Electromagnetic Compatibility



Warning! Use only approved accessories with this equipment. Unapproved modifications or operation beyond or in conflict with these instructions for use may void authorization by the authorities to operate the equipment.

Electrostatic Discharge



Warning! Internal circuit components can be sensitive to electrostatic discharge. Before installation, discharge electrostatic buildup by touching a metal pipe or other earth-grounded metal object prior to touching the meter body, register housing, or Itron device.

Do Not Drop



Warning! While Itron modules are designed to withstand a drop, dropping the module may damage the device and void the warranty.

2

About the 500W ERT Module

OpenWay® Riva

The OpenWay Riva 500W ERT modules are radio-frequency water modules (RF) featuring IPv6 open standards. The modules are designed to be read under Itron's multipurpose OpenWay Riva Network Mode or by legacy ChoiceConnect handheld, mobile and fixed network readers.

In OpenWay Riva Network Mode, the ERT modules offer firmware download, sub-hourly interval data, and extended data storage. In Mobile Mode, the ERT modules operate identically to the 100W+ ERT module and can be read by legacy ChoiceConnect handheld readers, mobile collection, and Itron's new Mobile Radio network readers. The 500W ERT module continues Itron's tradition of reliability, accuracy, and long battery life while supporting the industry's standards for security.

Note: The OpenWay Riva 500W ERT Module was formally known as the OpenWay Riva Water Module. The UI associated with this device may reflect the former name.

Gen™5

Itron Gen5 500W ERT modules are radio-frequency (RF) water modules that connect to the Gen5 Network as a leaf on a continuously powered device (CPD). The modules choose one CPD as a gateway to the Gen5 network. The CPD communication with the modules is based on a Limited Listening Schedule (LLS). The CPD handles the modules' messages, forwarding and transmitting the module's messages. The modules can communicate in 100S System Mode to support a ready-to-secure installation when a third-party work order system is used. The utility configures the module to switch to the Gen5 Network Mode.

The CPD device accepts up to 20 modules at a time. The modules choose the CPD association. Associated parent CPDs can change over time. The Gen5 500W ERT modules are not IP-addressable. The Gen5 network head-end addresses the ERT modules through the CPD and maintains a list of CPDs and associated 500W ERT modules. The CPD forwards messages addressed to the 500W ERT module. The modules continue Itron's tradition of reliability, accuracy, and long battery life while supporting the industry's standards for security.

Description

500W ERT module description	Location compliance	Itron part number
500W Remote Module, 4 Battery, Register and Telemetry 10-inch flying lead	USA/Canada, Australia, Tonga	ERW-1601-002
500W Remote Module, 2 Battery, Register and Telemetry 10-inch flying lead	USA/Canada, Australia	ERW-1601-007

Related Documents

- *500W ERT® Module Ordering Guide*
- *FC300 Getting Started Guide*
- *Field Deployment Manager Mobile Application Guide*
- *Gen™ X 500W ERT Module Specification Sheet*
- *Itron Mobile Radio Quick Reference Guide*
- *Itron Mobile Radio User Guide*
- *mlogonline™ Network Leak Monitoring System User Guide*
- *OpenWay® Riva 500W ERT® Module Specification Sheet*
- *500W ERT® Pit Module Installation Guide*
- *OpenWay® Riva Collection Manager Device Interface Guide*
- *OpenWay® Riva Leak Sensor Installation Guide*
- *Water Meter and Telemetry Module Compatibility List*

Itron Security Manager (ISM)

Users have the option of enabling enhanced security in remote 500W ERT modules. Itron Security Manager (ISM) is a feature that ensures that certain 500W ERT module commands are controlled through secure radio communications between the handheld computer or Mobile Collector and the remote 500W ERT module .

There are two fundamental security processes used to ensure confidentiality and validity of secured commands.

- **Authentication.** Authentication is the process of confirming that an artifact is genuine or valid. Authentication in the 500W ERT module is the process of verifying a request is from a valid source and in its original form.
- **Encryption.** Encryption is the process of transforming information to make it unreadable to anyone who does not have a valid security key. There are two types of encryption:

symmetric and asymmetric. Symmetric encryption uses a shared key to decrypt or encrypt information. Asymmetric encryption uses a private key to encrypt and a public key to decrypt. Data transmissions over the network are protected using AES-256 encryption.

Battery Life

The 500W ERT module has an expected battery life of 20 years, dependent on use case.

Low Battery

500W ERT modules include a low battery indicator that helps utilities proactively plan and manage field module replacements.

Note: Low battery functionality is based on the module's firmware version. For more information, see [Firmware Functionality on page 13](#).

Transmission Modes

The 500W ERT module is an IPv6 Wisun compliant device that operates in Mobile Mode or Network Mode.

Mobile Mode

In Mobile Mode, the module transmits every nine seconds over multiple RF channels to report on:

- meter register value
- cut cable or communication error event
- reverse flow (encoder version selected)
- system leak status
- low battery indicator

Network Mode

In OpenWay Riva Network Mode, the module reports four interrogation cycles daily. Each interrogation collects six hours of 3,840 buckets of interval and event data. Interval data is configurable from 1 minute to 1 hour (for example, 160 days of hourly data or 40 days of 15 minute data). Interval options are 5, 15, or 30 minutes.

In Gen5 Network Mode, the module supports 5, 15, 30, or 60-minute intervals. It provides storage and reporting for up to 62 days of 15-minute interval data and associated event data, or 8 months of hourly interval data.

Note: Interval data configuration is dependent on the module's firmware version. See [Firmware Functionality on page 13](#) for more information.

The 500W ERT module also sends a local access beacon message every 60 seconds that allows users to gather contingency readings locally when needed.



Caution: If you perform a Switch to Network Mode or Switch to Mobile Mode operation, it results in a loss of interval data.

The 500W ERT module operates using the 902 to 928 MHz in the ISM band frequency band and does not require an FCC license.

Operating Modes

The 500W ERT module has the following operating modes.

1. Factory mode

- Modules are shipped from the factory in factory mode.
- The module's transmitter is turned off.
- The module's receiver is bubbling-up to listen for a programming command.
- Modules will attempt to read the register every hour.
- Register Error Detected and Register Error alarm or event flags may be set when a register is not connected.
- If the 500W ERT module reads a connected register, the module automatically moves to run mode.

2. Audit Mode

- Audit mode reduces the normal read latency time associated with standard modes of operation and is often used after initial installation.
- This mode is useful in network installations where the normal bubble rate is very slow.
- Audit Mode remains active for 30 days and then reverts to the initial programmed mode.
- Audit Mode is intended to be used once.

3. Run mode

- 500W modules normal operation mode.
- The module's transmitted message is dependent on its factory settings for standard consumption + messages (SCM+).
- SCM+ remote 500W ERT module default bubble-up rate is 10 seconds.

4. Quiet mode

- Meter manufacturers can configure the remote 500W ERT module for quiet mode after programming and direct mounting the remote 500W ERT module in a factory.

- The remote 500W ERT module is awakened from quiet mode and enters run mode in one of two ways:
 - Counting two pulses. The pulses are counted internal to the 500W ERT module while it is in quiet mode.
 - Receiving a two-way command, such as a **Read ERT** using FDM.

If a remote 500W ERT module installed in quiet mode is not bubbling up SCM+ messages, it may be due to zero consumption on the remote 500W ERT module, such as a vacant or vacation home. Initiate a two-way command (for example, perform a **Read ERT** with FDM) before removing the unit.

Firmware Functionality

OpenWay Riva

This section lists the OpenWay Riva 500W ERT module firmware information and lists functionality by version.

Note: Each new version contains the features associated with the previous GSR.

Firmware part number	Global software release version (GSR)	FDM Check Endpoint firmware version	Over-the-air firmware part number	Firmware functionality
FMW-1601-004	4.1	1.3.7		<ul style="list-style-type: none"> ■ Network topology ■ IPv6 addressable ■ 60 minute interval data ■ Mobile Mode ■ Firmware download
FMW-1602-006	4.5	2.1.10.0	DFW-1602-006	<ul style="list-style-type: none"> ■ GSR 4.1 functionality ■ 5, 10, 15, 30-minute interval data ■ Extended meter alarms ■ Low battery alarm ■ Local auditing ■ Restricted water flow state
FMW-1602-012	4.5	2.2.6.0	DFW-1602-012	<ul style="list-style-type: none"> ■ 4.1 GSR compatibility ■ 4.5 2.1.10.0 compatibility ■ Bug fix to OpenWay Riva Leak Sensor compatibility

Firmware part number	Global software release version (GSR)	FDM Check Endpoint firmware version	Over-the-air firmware part number	Firmware functionality
FMW-1604-006	5.0	4.3.20	DFW-1604-006	<ul style="list-style-type: none"> 4.5 GSR compatibility Intelis Water meter encoder support 1 Minute sub hourly support (Network Mode only) Ability to separate FWDL from Comm FW vs. Metrology FW Remote Auditing of 500W in Network mode Extended Fan Connectivity Mode (GeoMode)
FMW-1607-001	5.1	Register Firmware: 7.8.7.0 Encoder Image: v3.1.9.0	DFW-1607-001	<ul style="list-style-type: none"> 5.0 GSR compatibility Increased data rate Network authentication optimization FWDL enhancements
FW-1608-001	5.3	Register Firmware: 8.8.4.0 Encoder Image: 3.1.9.0	DFW-1608-001	<ul style="list-style-type: none"> GSR 5.1 compatibility

GenX

This section lists the GenX 500W ERT module firmware information and lists functionality by version.

Note: Each new version contains the features associated with the previous GSR.

Table 1 GenX firmware details

Part number	Global software release (GSR) version	FDM Check Endpoint firmware version	Over-the-Air firmware part number	Firmware functionality
FMW-1606-001	2.0	6.6.0.0	DFW-1606-001	<ul style="list-style-type: none"> Firmware download 100S Mobile Modes 1, 5, 15, 30, 60-minute interval data Extended Meter Alarms

Events and Alarms

Mobile Mode

Extended Alarm Flag

This is retrievable with two-way communication.

Register Error Flag

- The Register Error flag sets if the Register Error Detected flag is active for 24 hours.
- The Register Error Flag remains active for 40 days in Mobile Mode.

Register Error Detected

- Register Error Detected indicates that the remote 500W ERT module is not communicating with the register/meter. The event or alarm flag automatically clears after the 500W ERT module receives a successful read from the register.

Note: The Register Error Detected flag may be an indicator of a damaged register.

Low Battery Warning

- The remote modules include a battery life estimator. The estimator is based on the number of data packets sent at the various power levels and the age (self-discharge) of the 500W ERT module . The low battery warning allows the utility to easily identify which 500W ERT modules are nearing end-of-life in a mixed population and gives the utility the opportunity to schedule replacement.

Note: The low battery warning is a single flag that is set when the battery has less than 10% remaining capacity, which typically corresponds to 2 years of battery life remaining. Battery life is evaluated daily at midnight.

Network Mode

Note: 500W ERT module events and alarms are dependent on the module's firmware version. For more information, see [Firmware Functionality on page 13](#).

The 500W ERT module reports the tampers available in Mobile Mode as well as extended meter alarms available from new solid-state and electronic meters connected to the 500W ERT module . The extended alarms include:

- Empty pipe
- Temperature
- High flow
- Meter low battery
- Meter tampering

- Reverse flow
- Zero consumption

For more information about the extended alarms, see the *OpenWay® Collection Manager Device Interface Guide*.

3

Initializing and Connecting

This chapter provides the instructions to initialize and connect the remote 500W ERT module to the meter or register.

Requirements are based on the network system mode. The remote 500W ERT module's auto-sensing technology eliminates the need to initialize the module at the time of installation. The module automatically detects the connected register type.



Caution: To obtain an immediate reading, initialize the remote 500W ERT module with an approved handheld computer. Failure to initialize the module may delay the initial reading up to one hour.

To initialize the remote 500W ERT module immediately, use one of the following handheld computers running Field Deployment Manager (FDM) version 4.0 or later.

- FC300SR handheld computer
- Itron Mobile Radio (IMR) connected to a user-supplied computer or Bluetooth device

For normal activation, connect the remote 500W ERT module to the water meter register. The module polls for a register every hour and automatically activates after it detects a register.

Programming

Consider the following when the 500W ERT module is programmed:

- The consumption values are not programmable. (Programmable parameters include values like ID and register type.)
- Programming the module will move the remote module into the specified operating mode.
- If the module is not programmed, the module will attempt to read the register every hour and will wake up in default Mobile Handheld mode when a register is found.

Use an FC300SR handheld or Itron Mobile Radio connected to a user-supplied computer or Bluetooth device running FDM Tools v4.0 or higher software and your utility's programming configuration file to program the module .

Note: Do not program the module until it is connected to the water meter register.

Refer to the *Field Deployment Manager Tools Mobile Application Guide* for programming information.

After programming, the module enters the selected operating mode and begins bubbling-up specified messages at the selected rate.



Caution: The FC300SR or Itron Mobile Radio are the only devices that support programming for the remote module endpoint.

The remote module and programmer should be a minimum of 12-inches apart while programming.

Do not place the programmer antenna directly on the remote module.

Encoder-type Register Connections

Connect the wires from the 500W ERT remote module to the register screw terminals according to the following table.

Note: Itron recommends 19-26 gauge, pre-bonded or solid conductor wire with a maximum diameter of .082" (individual wire insulation). The use of un-bonded wire may produce an unreliable connection when using gel caps for joining wires.

	Remote 500W ERT module wire color		
	Brown (data)	Gray (power/clock)	Yellow (ground)
Register manufacturer	Register screw color designator		
<ul style="list-style-type: none"> ■ Badger ■ ADE ■ E Series ■ HR E LCD ■ HR E Mechanical 	Green	Red	Black
Badger M5000 Mag Meter	Green terminal: Out 4+	Red terminal: Input +	Black Input - and Out 4 -
<ul style="list-style-type: none"> ■ Elster AMCO ■ Invision ■ Scancoder ■ AquaMaster ■ AquaMaster III 	Red	Green	Black
Diehl Hydrus	Green	White	Brown
<ul style="list-style-type: none"> ■ Elster AMCO ■ SM 700 (Severn Trent) ■ Q200 (Sensus protocol) ■ evoQ4 (Sensus Protocol) 	Green	Red	Black

	Remote 500W ERT module wire color		
	Brown (data)	Gray (power/clock)	Yellow (ground)
Register manufacturer	Register screw color designator		
Elster AMCO evoQ4 Mag	Red	White	Black
Itron (Actaris) Cyble Coder	Green	Red	Black
Kamstrup flowIQ2100	Green	Red	Black
<ul style="list-style-type: none"> MasterMeter Acculinx Octave 	Green	Red	Black
McCrometer	Green/data port	Red/clock port	Black/GND port
Metron Farnier OER	Green	Red	Black
<ul style="list-style-type: none"> Mueller (Hersey) Translator SSR 	Green	Red	Black
<ul style="list-style-type: none"> Neptune ProRead ProRead Auto-Detect E-Coder ARB-V 	Red	Black	Green
Performance ETR	Green	Red	Black
RG3 Tomahawk	Green	Red	Black
<ul style="list-style-type: none"> Sensus ECR ICE iPERL SRII OMNI 	Green	Red	Black
<ul style="list-style-type: none"> Siemens Mag Meter Mag8000CT-7ME6820 Mag8000-7ME6810 	92	91	93
Zenner (Hendey) ETR	Green	Red	Black

Pulser-type Register Connections

Connect the remote 500W ERT module cable to the register according to the following table.

	Remote module wire color		
	Brown	Gray	Yellow
Register manufacturer	Register screw color designator		
Badger RTR (3-wire)	Red	Black	Green
Badger RTR (2-wire)	Red	Black	No connection*
Badger M5000 Mag Meter	Red terminal: Out 1+	Black terminal: Out 1-	White terminal: Out 1+
<ul style="list-style-type: none"> ■ Cadillac Meter CMAG/EMAG ■ Magnetic Flow 	DO1/DO2	COM	COM
Elster Digital	Black	Green	Red
Elster V100T	Red & Black	Blue	Yellow
<ul style="list-style-type: none"> ■ Itron (Actaris) ■ Flostar (2-wire) ■ Cyble Sensor 	Either wire	Remaining wire must be connected to both ERT module wires	
Krohne IFC	Term B	Term H	Term B
RG3 Tomahawk	Green	Black	Green
Sensus PMM	Red	Black	Bare

Note: *Itron recommends terminating unconnected wires with a gel-cap connector to protect the bare wire end.

Connecting Using an Extension Cable

Order the 25-foot inline connector extension cable assembly (CFG-0151-404) to extend the cable of the 500W ERT module .

Verifying Operation

Use one of the following programming devices to verify that the remote 500W ERT module is correctly recording consumption data.

- FC300SR handheld computer
- Itron Mobile Radio connected to a user-supplied computer or Bluetooth device

Each handheld radio requires special setup and configuration parameters to successfully read and program remote modules. Refer to the respective meter reading application for specific instructions. When comparing the actual register value to that reported by the remote 500W

ERT module , please keep in mind the 500W ERT module 's consumption value is updated once an hour when it is in Run Mode.



Caution: Verifying the remote 500W ERT module operation requires an FC300SR handheld computer or Itron Mobile Radio running FDM v4.0 or higher. Legacy Itron handheld programming devices cannot read the remote 500W ERT module .

4

Installing the Remote 500W ERT Module



Warning! Internal circuit card components may be sensitive to electrostatic discharge. Be careful not to touch any part of the meter body, register housing, or 500W module prior to discharging any static buildup on your person. To discharge electrostatic buildup, touch a grounded metal object such as the metal water pipe or an earth-grounded metal structure.

Install the remote 500W ERT modules using one of the following mounting options:

Remote 500W ERT module mounting options	
Pipe mount	The remote 500W ERT module mounts to a pipe near the meter (see Pipe Mount Installation on page 27). This option requires the remote mount kit and the appropriate pipe mount kit.
Remote mount	The remote 500W ERT module mounts to a flat surface and connects to the meter register with a cable up to 300 feet (see Remote Mount Installation on page 31). This option requires the remote mount kit.
Direct mount to the meter register	The 500W ERT module mounts directly to a meter register designed for remote 500W ERT module direct mounting. This installation does not require a mounting kit (see Direct-mounting to the Meter Register on page 33).



Warning! While Itron modules are designed to withstand a drop, dropping the module can damage sensitive electronic components and void the product warranty.

Mounting Accessories

Accessory	Part number
Remote mount kit (remote 500W ERT module with telemetry device)	CFG-1300-003
Pipe mount kits	
Pipe mount kit for pipe diameters up to 4"	CFG-0217-501
Pipe mount kit for pipe diameters between 3/4" to 1-3/4"	CFG-0217-503

Accessory	Part number
Pipe mount kit for pipe diameters between 1-5/16" to 2 1/4"	CFG-0217-504
Cable armor (for field retrofit installation instructions, Using the Itron Cable Armor on page 43)	
5 foot cable thin-insulation (with protective cover and cable armor)	CFG-0151-006SS
5 foot cable thick-insulation (with protective cover and cable armor)	CFG-0151-010SS
5 foot cable armor for field retrofit	FAB-1302-001
Direct mount screw pack	SCR-0010-005
Direct mount screw pack, bulk: 80 per bag	SCR-0010-004
Direct mount screw pack, bulk: 122 per bag	SCR-0010-001

Installing the Module Cable Strain Relief

After you complete the 500W ERT module to register connections, install a cable tie to the meter cable just below the exposed colored lead wires on the cable insulation. The cable tie provides a cable strain relief to reduce the risk of destructive tension on the lead wires.

These materials are required to install the cable strain relief:

- Remote mount kit
- CFG-1300-003, dual cable ports for register connection and telemetry device connection
- Side cutter pliers
- Gel connector crimping tool
- Cable tie gun
- Torx T-15 screwdriver

Securing the Cable Strain Relief

1. Wrap the cable tie around the meter register or secondary connection cable.

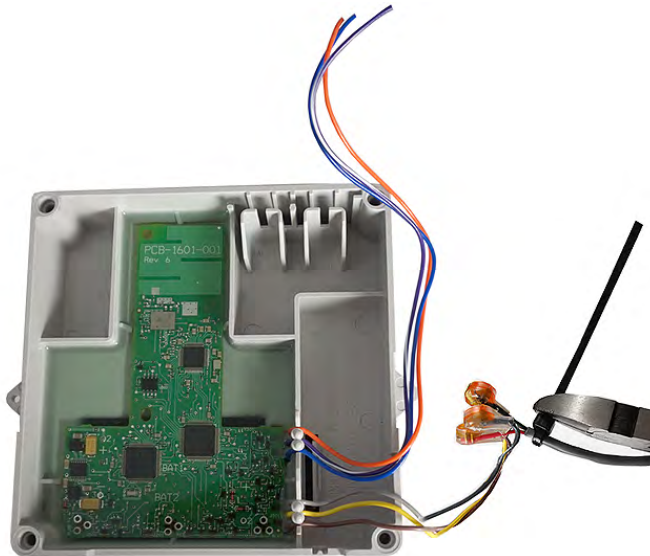


2. Insert the pointed end of the cable tie into the receptacle end of the cable tie with the ribbed edge facing in.
3. Pull the pointed end of the cable tie until the cable tie is hand-tightened.
4. Insert the excess cable tie into the cable tie gun. Pull the cable gun trigger to tighten and clip the excess cable tie. The cable tie gun shown in the illustration is equipped with a red dial that allows the user to set the cable tightening pressure of the cable gun.



Note: If your cable tie gun is equipped with a dial to set the tightening pressure, set the pressure to ensure that the cable tie is secure on the lead wire. After installation, the cable tie must not move on the register or secondary lead wire.

5. If your cable tie gun does not have a clipping feature, remove the cable tie from the cable tie gun. Using a side cutter pliers, clip the excess cable tie.



6. Place the cable connection into the remote 500W ERT module housing with the cable ties to the inside.



Installing the Backplate

After the connections are made to the register and optional telemetry device, attach the remote 500W ERT module's backplate.

Mount the remote module after the backplate is attached.

Attaching the Backplate

1. Route the register cable and telemetry device cable through the dual-port backplate. Ensure that the cable strain reliefs are inside the module housing and backplate assembly.



2. Route the register cable through the bottom backplate cable cutout and telemetry device cable through the top backplate cable cutout.



3. Align the remote module backplate with the mounting screw holes. Verify that the Itron logo is not upside down.
4. Insert a backplate mounting screw in one corner and tighten the screw two or three turns. Insert the remaining three screws and tighten each a few turns.



5. Completely tighten all screws evenly in an alternating fashion.



Pipe Mount Installation

The remote 500W ERT module can mount on a pipe vertically, diagonally, or horizontally using a pipe mount kit and remote mount kit (see [Mounting Accessories on page 22](#)).

Mounting the Pipe Bracket on a Vertical Pipe



Caution: A vertical mounting position is important to maximize RF performance. Mount the ERT module with the module's label arrow pointing up. *The module's arrow must never point to either side or upside down.* The module's tilt tamper functionality is designed to operate with the module installed vertically.

1. Remove the pipe bracket and band clamp from the pipe mount kit (Itron part number CFG-0005-003). Pipe brackets may be black or gray. These instructions show a black pipe bracket.



2. Loosen the band clamp screw until the end of the band releases.



3. Push the end of the clamp's band through the holes in the pipe bracket.



4. Place the band clamp around the pipe. The band will loosely wrap around the pipe.
5. Push the end of the band through the band clamp screw assembly. Turn the band clamp's screw assembly to fit into the pipe bracket opening. Tighten the clamp screw until the band clamp is secure on the pipe.



Adapter Plate Mounting Positions

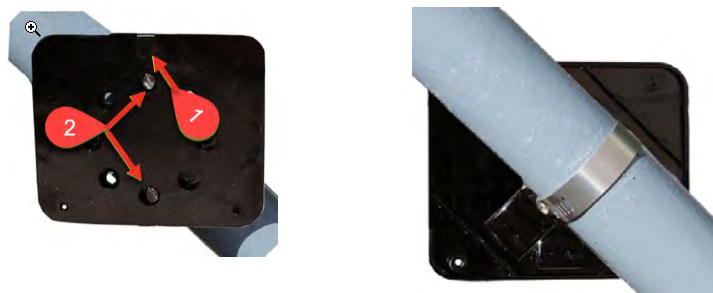
The installation procedure in the previous section shows how to mount the adapter plate on a vertical pipe.

The following pictures show the adapter plate on 45-degree angle and horizontal pipes. Regardless of the angle of the pipe, the adapter plate mounting lug (1) must always be at the top.

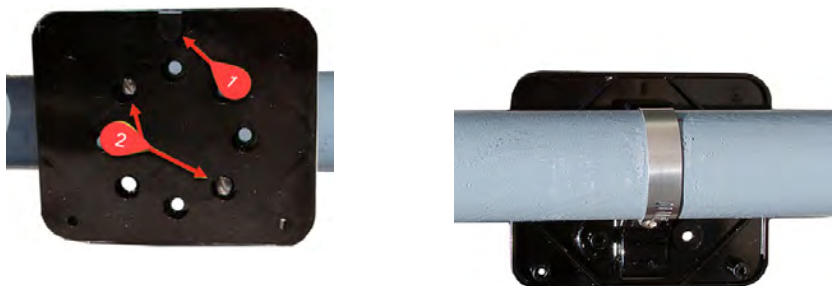
If the pipe is at a 45-degree angle up to the right, install the adapter plate with the mounting screws (2) as shown.



If the pipe is at a 45-degrees angle up to the left, install the adapter plate as shown.



If the pipe is horizontal, install the adapter plate as shown.



Mounting on the Adapter Plate

1. Locate the two 1-inch remote 500W ERT module mounting screws in the pipe mount kit.
2. Slide the remote 500W ERT module back cover onto the adapter, pushing up to secure the lug adapter in the lug slot.



3. Install the two 1-inch remote 500W ERT module mounting screws.



4. Tighten the screws to 9 to 12 inch-pounds of torque.

OpenWay Riva Leak Sensor (OLS) Installation

Installation of the OLS with a remote 500W ERT module requires an OLS with flying lead ends (Itron part number LDS-1601-002). For the remote module installation instructions, see *OpenWay Riva Leak Sensor Installation Guide*.

Connecting the SET Valve

This section describes installation of a remote water disconnect valve in an water system. The 500W ERT module supports three valve states. For more information about the firmware version required to support the SET valve and Leak Sensor, see [Firmware Functionality on page 13](#).

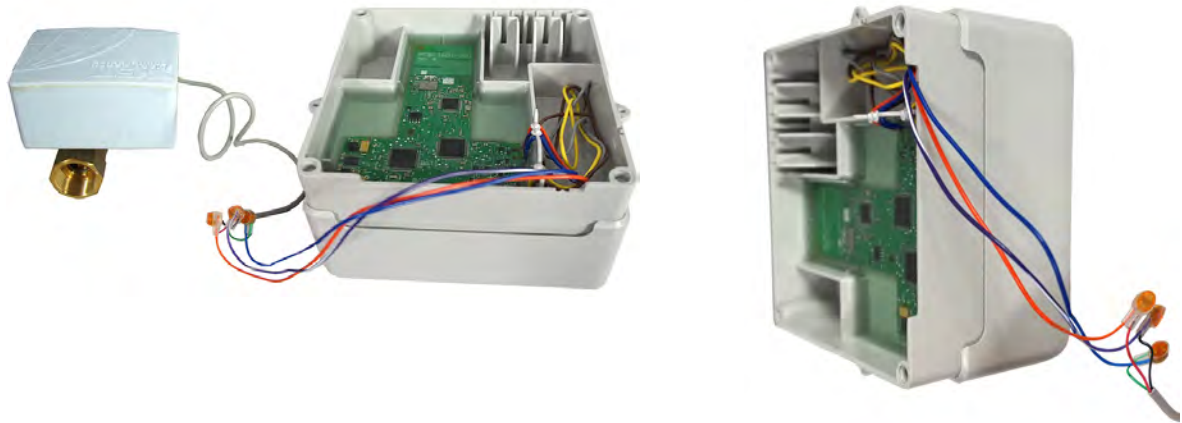
- **Connected.** The water flow is open and flowing at 100% configured capacity.
- **Disconnected.** The water flow is shut off with no water flowing. The remote water disconnect valve provides the ability to remotely open (reconnect) the valve.
- **Restricted.** The water is restricted and flowing at the configured installation flow.

The module automatically detects the presence of connected water disconnect devices within 22.5 minutes and begins reading disconnect valve data. To immediately detect the water disconnect valve and begin reading data, perform a **Check ERT** with a handheld computer running FDM software.

The SET valve connects to the remote 500W ERT module orange, blue, and purple/white wires.

Completing the SET Valve Wire Connections

Connect the remote 500W ERT module wires to the SET valve wires following the connections shown in the SET Valve/remote 500W ERT module wire connections table.



SET valve to 500W ERT module wiring			
Remote module wire color	Blue	Orange	Purple/white
SET shutoff valve wire color	Green	Red	Black

Remote Mount Installation

Connect the remote 500W ERT module to the register as described in [Initializing and Connecting on page 17](#).

Using a back plate, create a template by drilling through a back plate lug slot to mark the position of the screw. Use the drilled back plate as your mounting template.

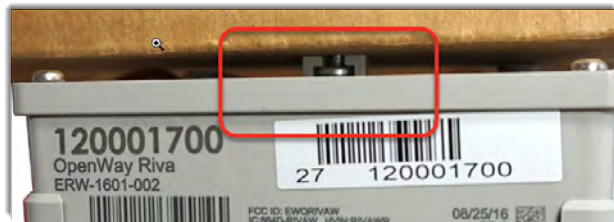
The arrow on the remote 500W ERT module must point up when installation is complete.

Installing on a Flat Surface

1. Select an installation location.
2. Using a back plate template, drill three pilot holes into the wall or other surface. The two bottom holes should be level.
3. Screw a mounting screw for the lug slot into the surface, leaving approximately 1/8-inch of the screw protruding. The lug slot should slide over the screw with a tight fit.



4. Slide the remote 500W ERT module lug slot onto the mounting screw, pushing the remote 500W ERT module upward until the screw head is all the way into the slot.



5. Screw the remote 500W ERT module to the wall using the remaining two mounting screws.



6. Insert a tamper seal over each mounting screw and drive into place with a nut driver or a similar tool.



Note: A tamper seal is fully seated when the top of the tamper seal is approximately 1/16 inch below the top of the screw recess.

7. Secure any excess cable using the provided cable ties.

Direct-mounting to the Meter Register

Direct-mounting remote 500W ERT modules to a meter register requires a register designed for that purpose. This section describes remote 500W ERT module installation for the following direct mount registers:

- Badger ADE and RTR
- Elster/AMCO (ABB) Scancoder, InVISION, and Digital



Warning! Do not use the direct mounting method in a pit environment. Use a 500W ERT module for pit environments. OpenWay Riva remote modules direct mounted in a pit environment are not covered by the Itron warranty.

Direct-mounting on the ABB Scancoder, InVision, or Digital Direct-Mount

Note: Verify that you have an Elster/AMCO meter with a register designed for direct-mount remote 500W ERT module. Always install the remote 500W ERT module right side up with the arrow on the housing pointed upward. The register may or may not be mounted on the meter when performing the following steps.



1. Push the hollow pin (1) completely out of its location and separate the remote 500W ERT module mounting bracket (2) from the meter register collar (3).



2. Strip 1/2-inch of insulation from the end of the brown, gray, and yellow wires.
3. Place the remote 500W ERT module on the mounting bracket and route the yellow, gray, and brown wires through the opening.

Note: A gasket is not required.

4. Install four Torx-head mounting screws (Itron part number SCR-0010-005).
5. Hand-tighten each screw.
6. Connect the remote 500W ERT module wires to the register screw terminals following the remote 500W ERT module to the Elster/AMCO meter register wire connections. After the wires are connected, carefully tuck the connectors into the remote 500W ERT module housing. Tighten all screws securely.



Caution: Install the wires around the screws in a clockwise direction (as shown) or the wires may come out from under the screw heads as you tighten them. Also, verify that insulation is *NOT* compressed under the screw head, or the wire may not make good contact.



7. Install the module and mounting bracket on the meter register adapter collar.
8. Replace the hollow pin (1) you removed in step 1.

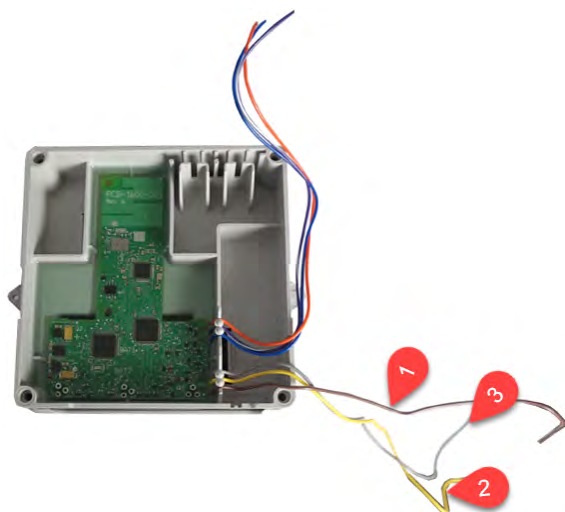


Direct-mounting to a Badger Direct-Mount Register

Note: Verify you have a Badger meter with a register designed for direct mount remote modules. Check the part number on the label to verify the module matches the meter. Always install the module with the arrow on the housing pointing upward. The register may or may not be mounted on the meter when performing the following steps.



1. The remote 500W ERT module has three wires that connect to the register:



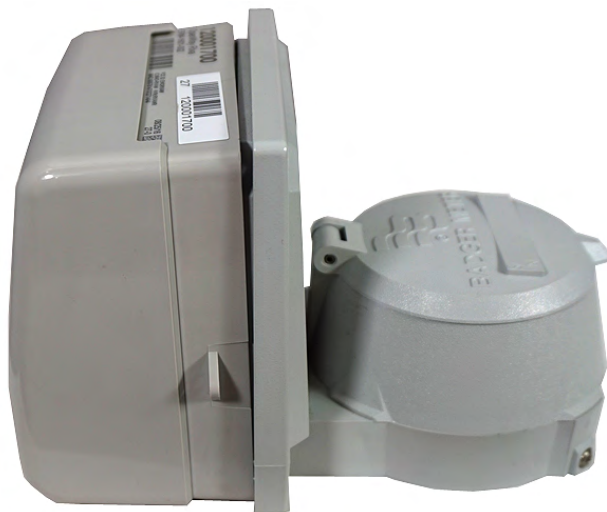
1	brown insulated wire
2	yellow insulated wire
3	gray insulated wire

Note: For an RTR register, tuck the unused yellow wire into the housing.

2. Connect the remote 500W ERT module wires to the register using gel-cap connectors following the remote 500W ERT module to the Badger ADE register wire connections (see [Encoder-type Register Connections on page 18](#)).
3. After the wires are connected, carefully tuck the connectors into the remote 500W ERT module housing.




4. To wire the 500W ERT remote module to the RTR 2-wire register, connect the remote 500W ERT module wires to the 2-wire register using gel-cap connectors. After the wires are connected, carefully tuck the connectors into the remote 500W ERT module housing.
5. Place the remote 500W ERT module on the register, ensuring that the edge of the remote 500W ERT module housing is seated properly around the perimeter of the register as shown.



Note: A gasket is not required.

6. Install four Torx-head mounting screws (SCR-0010-005) and hand-tighten the screws.



7.  **Warning!** Use Itron mounting screws (SCR-0010-005). Using the wrong mounting screws could crack the plastic module housing.
8. If you have not already done so, connect the register to the water meter and fully tighten the mounting screw (1) as directed by Badger Meter.



Note: Mount the register on the meter in one of four different positions with respect to the direction of water flow (refer to the manufacturer's installation directions).

9. If the standard Torx screw is used (1), a wire seal is not necessary. If the optional slotted and drilled RTR screw is used, install a wire seal through the drilled screw from (1) to (2), or as specified by utility policy.

5

Completing Gel-cap Connections Using the Itron Splice Kit



Important! All unused wires on 500W ERT modules must be terminated. Wire terminations must be properly sealed with a non-conductive gel material to prevent water intrusion and possible environmental or electrical issues.

Required Materials

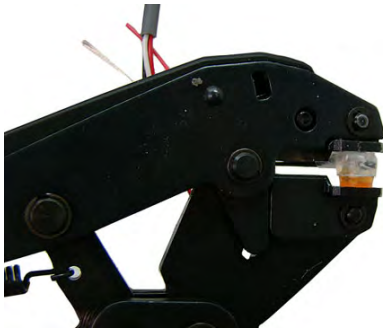
- E-9R 3M® gel connector crimping tool (or other 3M approved crimping tool)
- Itron splice kit (part number OEM-0034-002)

1. Push two wires as far as possible into the connector.



Caution: Do not strip insulation from the ends of the wires before inserting them into the connector.

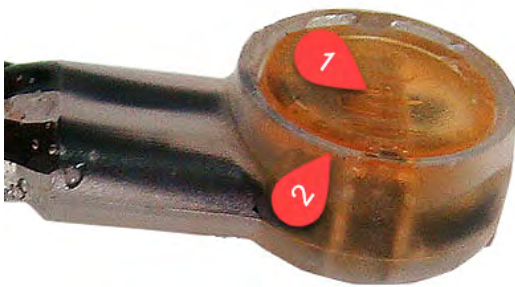
2. Carefully place the connector and wires into the jaws of the crimping tool. Make sure the wires remain fully inserted in the gel-cap connector.



3. Crimp the connector by squeezing the handles until the connector cap is fully seated. Continue to apply pressure for three seconds.



4. A connector is crimped properly when the top of the movable yellow center (1) is flush with the top of the connector body (2).



Warning! Crimping the connector forces some sealant out of connector. The sealant protects the inside of the connector against insects, moisture, and other contaminants. The sealant may cause minor eye and skin irritation. Avoid eye contact. Avoid prolonged or repeated skin contact. Contact Itron Support for Safety Data Sheets (SDS).



5. After the 500W ERT module to register or meter wire connections are completed, arrange the connectors in a single file.



6. Insert the connectors and wires into the splice tube until the connectors and wires are completely immersed in the non-conductive gel material.



7. Separate the cable wires to the sides and close the splice tube cover.



8. Remove any leftover materials from the customer premises.

6

Using the Itron Cable Armor

This section describes the procedure for installing Itron cable armor in a field installation. The Itron cable armor provides a layer or protection for the module's cable jacket. Itron cable armor is available in five-foot sections.



Warning! Itron cable armor is stainless steel and may have sharp edges. Use caution when you are installing the cable armor.

If you remove the connection from the remote 500W ERT module to install the cable armor, you must use an Itron handheld to reprogram the 500W ERT module using FDM Endpoint Tools. Perform a **Check Endpoint** function (with FDM Endpoint Tools) after you reprogram the module to verify communication with the meter register.

Installing the Itron Cable Armor

1. Remove the installed remote 500W ERT module.

Note: Itron strongly recommends that you keep the remote 500W ERT module connected to the register during cable armor installation.

2. Cut a two to three inch strip of electrical tape.



3. Wrap the entire piece of electrical tape around the remote 500W ERT module cable near the remote 500W ERT module .



4. Beginning over the installed electrical tape, twist the Itron cable armor onto the remote 500W ERT module cable using a right-handed twist.



Warning! You must twist—not wrap—the cable armor onto the remote 500W ERT module cable. Wrapping the cable armor can cause the stainless steel jacket to warp.

You must begin twisting the cable armor over portion of the cable protected by the electrical tape. If you do twist the cable armor onto the remote 500W ERT module cable on the unprotected portion of the remote 500W ERT module cable, you could damage the module's cable. A cut cable could cause an remote 500W ERT module or register communication failure.

5. Continue to twist the cable armor onto the remote 500W ERT module cable until the cable armor covers the entire cable.



6. Remove any leftover materials from the customer premises. Discard or recycle leftover materials.

7

Troubleshooting

This information will help you troubleshoot issues related to the remote 500W ERT module.

The following table describes possible issues and provides suggested actions to resolve the issue.

Issue	Action
Cannot program the remote 500W ERT module.	Check the programming device and software version. Program remote 500W ERT module using an approved handheld computer running Field Deployment Manager (FDM) software v 4.0 or higher.
Cannot read the remote 500W ERT module.	A remote 500W ERT module that is not programmed will not transmit an SCM+. Reprogram the remote 500W ERT module and perform a reread. If a remote 500W ERT module is not initially programmed, it will not bubble-up and listen for an SCM+.
The remote 500W ERT module is reporting an invalid read.	A remote 500W ERT module that has set the Register Error flag will cause an Invalid Read to display in the FDM Consumption field.
Marginal readability due to the remote 500W ERT module location (for example, a remote 500W ERT module deep inside a pit).	Consider reprogramming the remote 500W ERT module for Hard-to-Read (H2R) mode. This increases the output to high power levels. Note: This mode will reduce battery life.
The handheld programmer is locked up and button presses produce no response.	<i>Soft boot</i> the handheld. Reference the documentation for your programmer (for more information, see Related Documents on page 10).