

August 8, 2012

## Purpose of Change

Dear Sir/Madam,

### **Re: Application for a Permissive Change Filing with FCC ID: EW780-H014-00**

The purpose of this document is to describe all the changes that are made to the new designed Handset model **CTM-S2411** from the original Handset model **S1410** in order to meet the requirements.

### **Changes from the original model to the new designed model:**

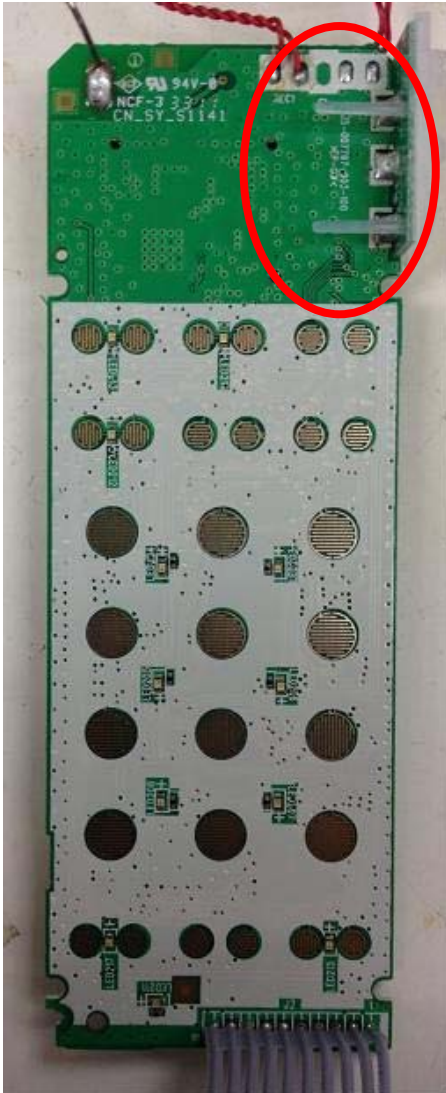
- S1410 uses On-Board RF module while CTM-S2411 uses the COB (chip on board) RF module.
- Only minor changes to an enclosure, S1410 is with round corners while CTM-S2411 is with square corners.
- Due to the new models have different physical outlook, in order to match with its mechanical construction, there are minor variations of the decoupling (circled in yellow) between S1410 and CTM-S2411 (electrolytic capacitors in S1410 compared with thin tantalum capacitors in CTM-S2411).
- Due to the new models have different physical outlook, in order to match with its mechanical construction, the LED locations together with the speaker and receiver traces next them are moved (as circled in red), and also the number of keys are changed from S1410 to CTM-S2411.



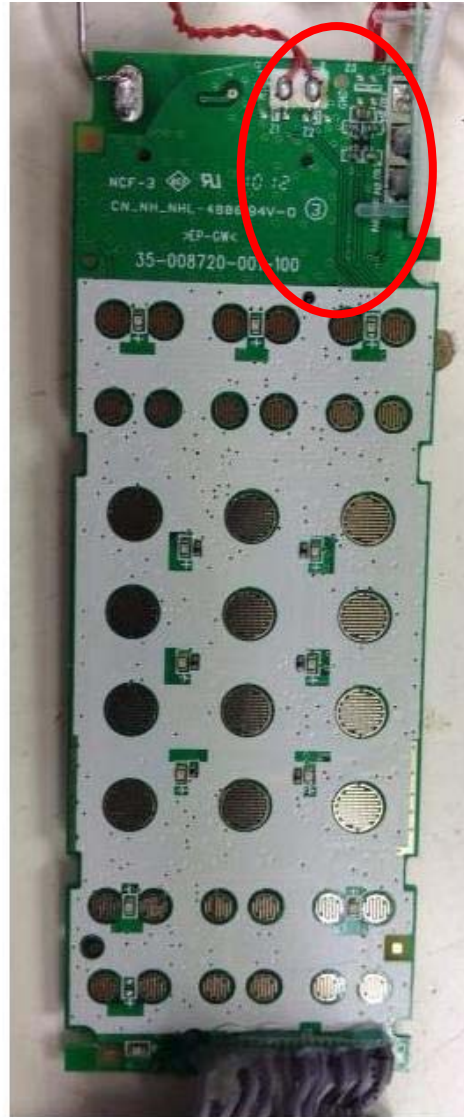
Original Model  
S1410



New Model  
CTM-S2411



Original Model  
S1410



New Model  
CTM-S2411

**Similarities between the original model to the new designed model:**

- Identical on both internal and external (hardware and software) design except RF module board.
- RF circuitry design and RF layout are the same.

Sincerely,

Samson Man  
Approbation Supervisor

August 8, 2012

## Purpose of Change

Dear Sir/Madam,

**Re: Application for a Permissive Change Filing with FCC ID: EW780-H014-00**

The purpose of this document is to describe all the changes that are made to the new designed Handset model CTM-S2421 from the original Handset model S1420 in order to meet the requirements.

### **Changes from the original model to the new designed model:**

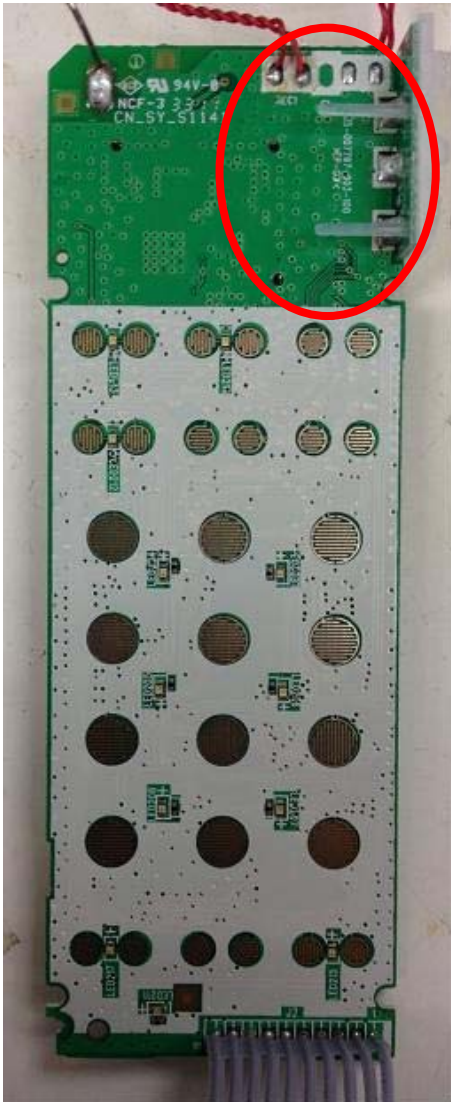
- S1420 uses On-Board RF module while CTM-S2421 uses the COB (chip on board) RF module.
- Only minor changes to an enclosure, S1420 is with round corners while CTM-S2421 is with square corners.
- Due to the new models have different physical outlook, in order to match with its mechanical construction, there are minor variations of the decoupling (circled in yellow) between S1420 and CTM-S2421 (electrolytic capacitors in S1420 compared with thin tantalum capacitors in CTM-S2421).
- Due to the new models have different physical outlook, in order to match with its mechanical construction, the LED locations together with the speaker and receiver traces next them are moved (as circled in red), and also the number of keys are changed from S1420 to CTM-S2421.



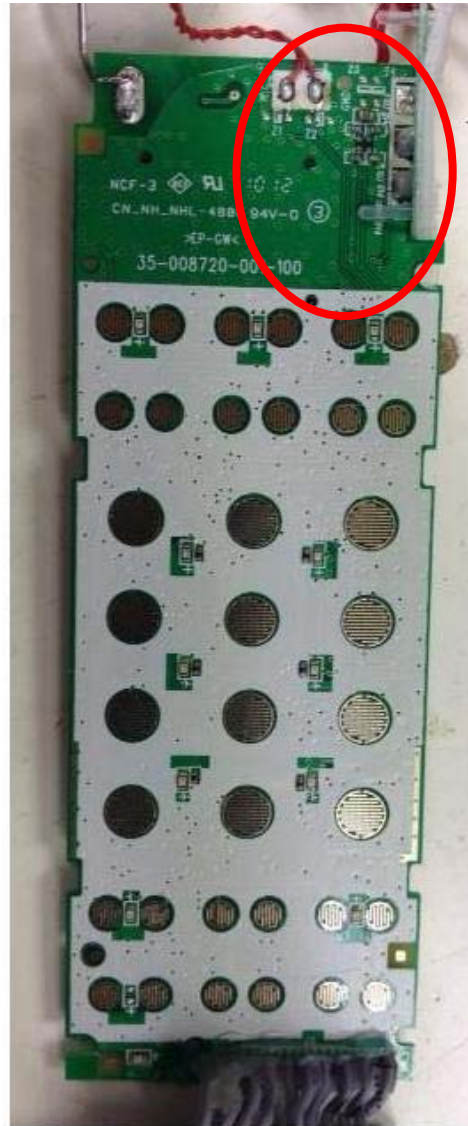
Original Model  
S1420



New Model  
CTM-S2421



Original Model  
S1420



New Model  
CTM-S2421

**Similarities between the original model to the new designed model:**

- Identical on both internal and external (hardware and software) design except RF module board.
- RF circuitry design and RF layout are the same.

Sincerely,

Samson Man  
Approbation Supervisor

August 8, 2012

## Purpose of Change

Dear Sir/Madam,

**Re: Application for a Permissive Change Filing with FCC ID: EW780-H014-00**

The purpose of this document is to describe all the changes that are made to the new designed Handset model **CTM-S2311** from the original Handset model **S1410** in order to meet the requirements.

### **Changes from the original model to the new designed model:**

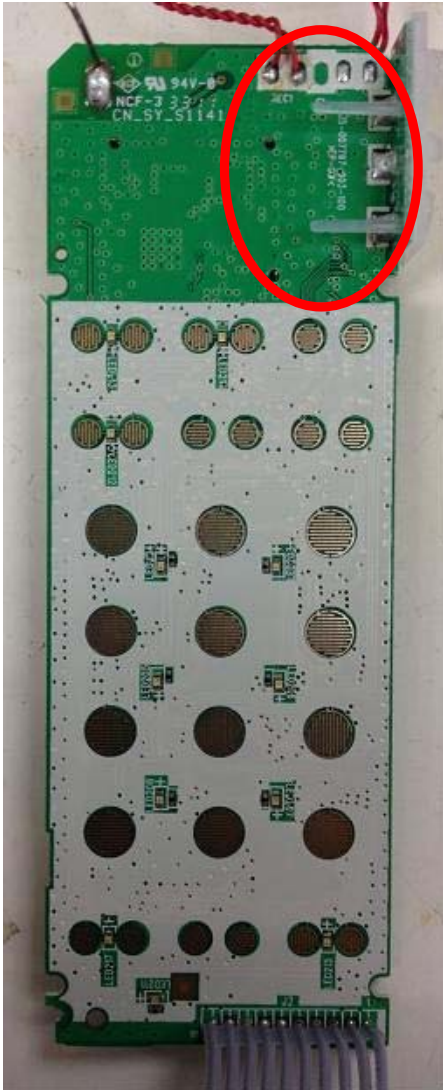
- S1410 uses On-Board RF module while CTM-S2311 uses the COB (chip on board) RF module.
- Only minor changes to an enclosure, S1410 is with round corners while CTM-S2311 is with square corners.
- Due to the new models have different physical outlook, in order to match with its mechanical construction, there are minor variations of the decoupling decoupling (circled in yellow) between S1410 and CTM-S2311 (electrolytic capacitors in S1410 compared with thin tantalum capacitors in CTM-S2311).
- Due to the new models have different physical outlook, in order to match with its mechanical construction, the LED locations together with the speaker and receiver traces next them are moved (as circled in red), and also the number of keys are changed from S1410 to CTM-S2311.
- CTM-S2311 is a Cordless Handset powered through the coiled cord with 6VDC SMPS instead of rechargeable battery in S1410.



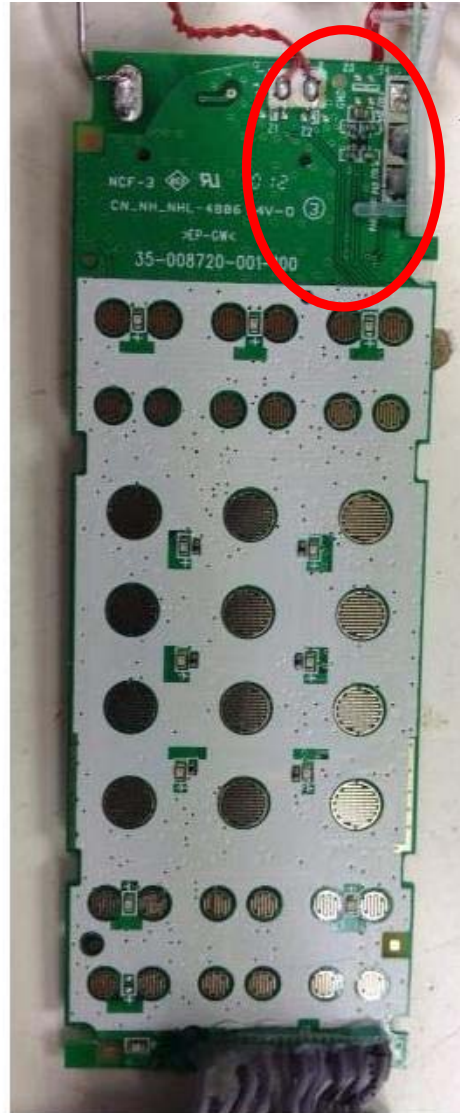
Original Model  
S1410



New Model  
CTM-S2311



Original Model  
S1410



New Model  
CTM-S2311

**Similarities between the original model to the new designed model:**

- Identical on both internal and external (hardware and software) design except power circuit.
- RF circuitry design and RF layout are the same.

Sincerely,

Samson Man  
Approbation Supervisor

August 8, 2012

## Purpose of Change

Dear Sir/Madam,

### **Re: Application for a Permissive Change Filing with FCC ID: EW780-H014-00**

The purpose of this document is to describe all the changes that are made to the new designed Handset model **CTM-S2321** from the original Handset model **S1420** in order to meet the requirements.

### **Changes from the original model to the new designed model:**

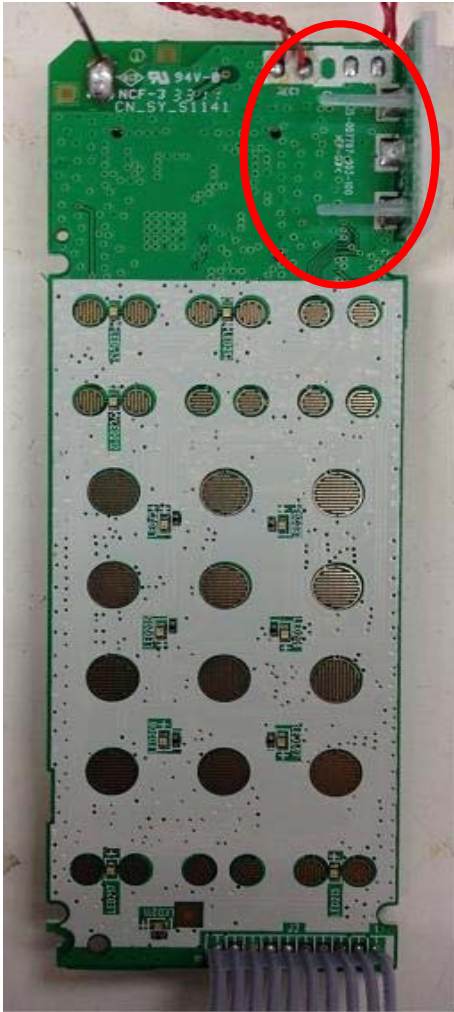
- S1420 uses On-Board RF module while CTM-S2321 uses the COB (chip on board) RF module.
- Only minor changes to an enclosure, S1420 is with round corners while CTM-S2321 is with square corners.
- Due to the new models have different physical outlook, in order to match with its mechanical construction, there are minor variations of the decoupling (circled in yellow) between S1420 and CTM-S2321 (electrolytic capacitors in S1420 compared with thin tantalum capacitors in CTM-S2321).
- Due to the new models have different physical outlook, in order to match with its mechanical construction, the LED locations together with the speaker and receiver traces next them are moved (as circled in red), and also the number of keys are changed from S1420 to CTM-S2321.
- CTM-S2321 is a Cordless Handset powered through the coiled cord with 6VDC SMPS instead of rechargeable battery in S1420.



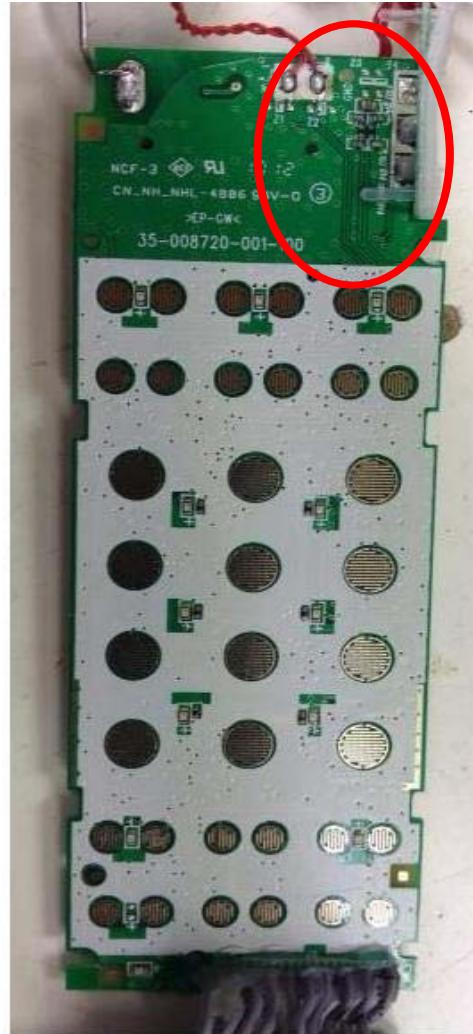
Original Model  
S1420



New Model  
CTM-S2321



Original Model  
S1420



New Model  
CTM-S2321

**Similarities between the original model to the new designed model:**

- Identical on both internal and external (hardware and software) design except power circuit.
- RF circuitry design and RF layout are the same.

Sincerely,

Samson Man  
Approbation Supervisor