

Oct 21, 2011

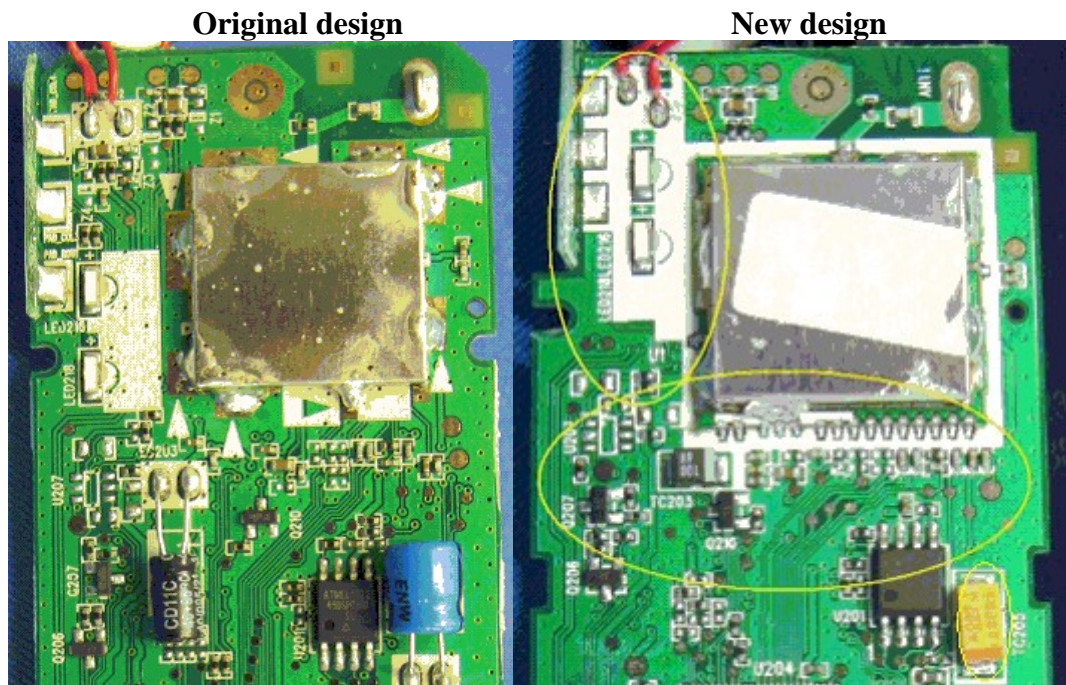
Purpose of Change

Dear Sir/Madam:

Re: Application for a Permissive Change Filing with FCC ID: EW780-H014-00

The purpose of this document is to describe all the changes that are made to the new designed Handset model **S2320-6VDC** from the original Handset model **S1420** in order to meet the requirements.

Changes from the original model to the new designed model:



- S1420 used On-Board RF module while S2320-6VDC used the COB (chip on board) RF module.
- Only minor changes to an enclosure, S1420 with rounded corners while S2320-6VDC with squared corners
- Due to new models have different physical outlook, in order to match with its mechanical construction, minor variation of the decoupling and LED location (circled in yellow) between S1420 and S2320-6VDC
- Corded Handset powered per cradle with 6VDC SMPS instead of Cordless Handset powered by rechargeable battery

Similarities between the original model to the new designed model:

- identical on both internal and external (Hardware and Software) design except power circuit .
- RF circuit design and RF layout are same.

Sincerely,



Samson Man
Approbation Supervisor

Oct 21, 2011

Purpose of Change

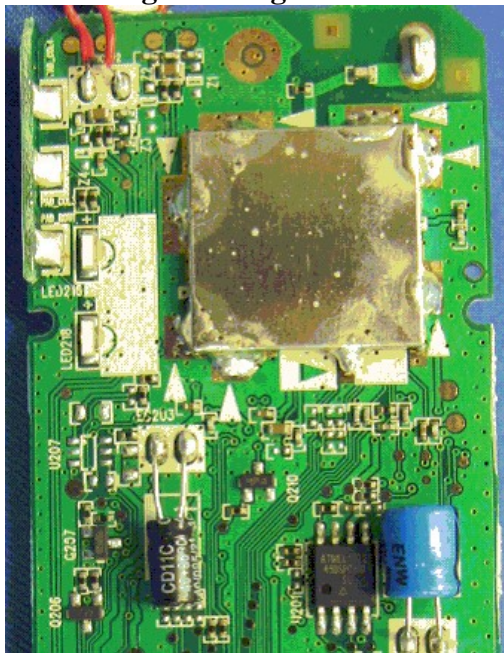
Dear Sir/Madam:

Re: Application for a Permissive Change Filing with FCC ID: EW780-H014-00

The purpose of this document is to describe all the changes that are made to the new designed Handset model **S2310-6VDC** from the original model **S1410** in order to meet the requirements.

Changes from the original model to the new designed model:

Original design



New design



- S1410 used On-Board RF module while S2310-6VDC used the COB (chip on board) RF module.
- Only minor changes to an enclosure, S1420 with rounded corners while S2310-6VDC with squared corners
- Due to new models have different physical outlook, in order to match with its mechanical construction, minor variation of the decoupling and LED location (circled in yellow) between S1420 and S2310-6VDC



VTech Telecommunications Ltd

- Corded Handset powered per cradle with 6VDC SMPS instead of Cordless Handset powered by rechargeable battery

Similarities between the original model to the new designed model:

- identical on both internal and external (Hardware and Software) design except power circuit .
- RF circuit design and RF layout are same.

Sincerely,

A handwritten signature in black ink, appearing to read "Samson Man", with a horizontal line extending to the right.

Samson Man
Approbation Supervisor