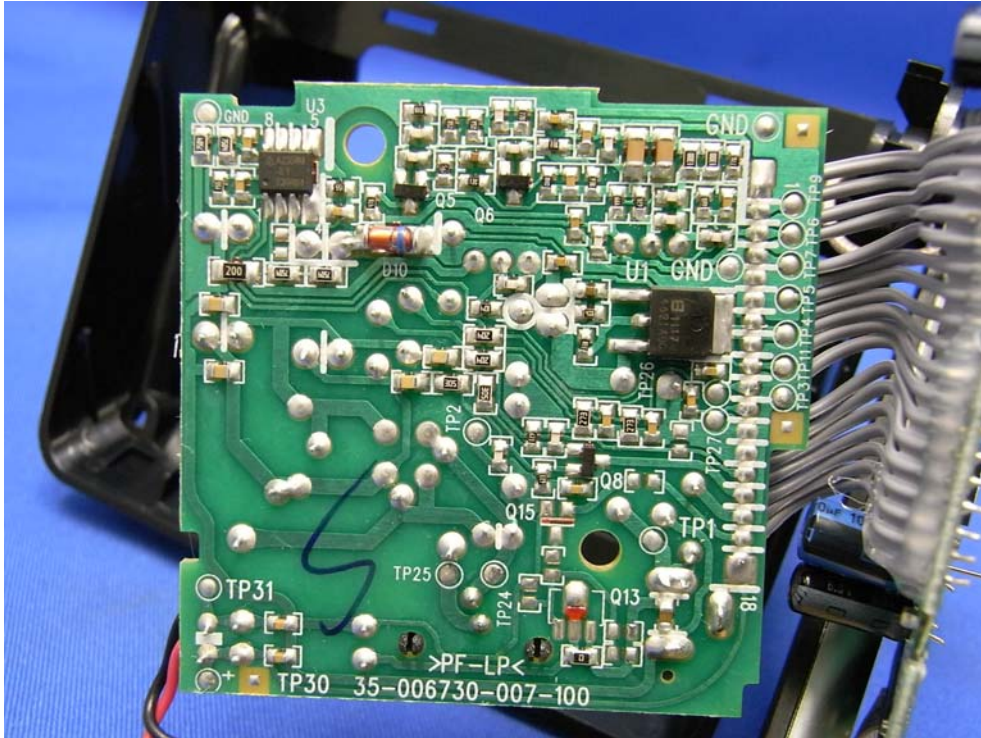




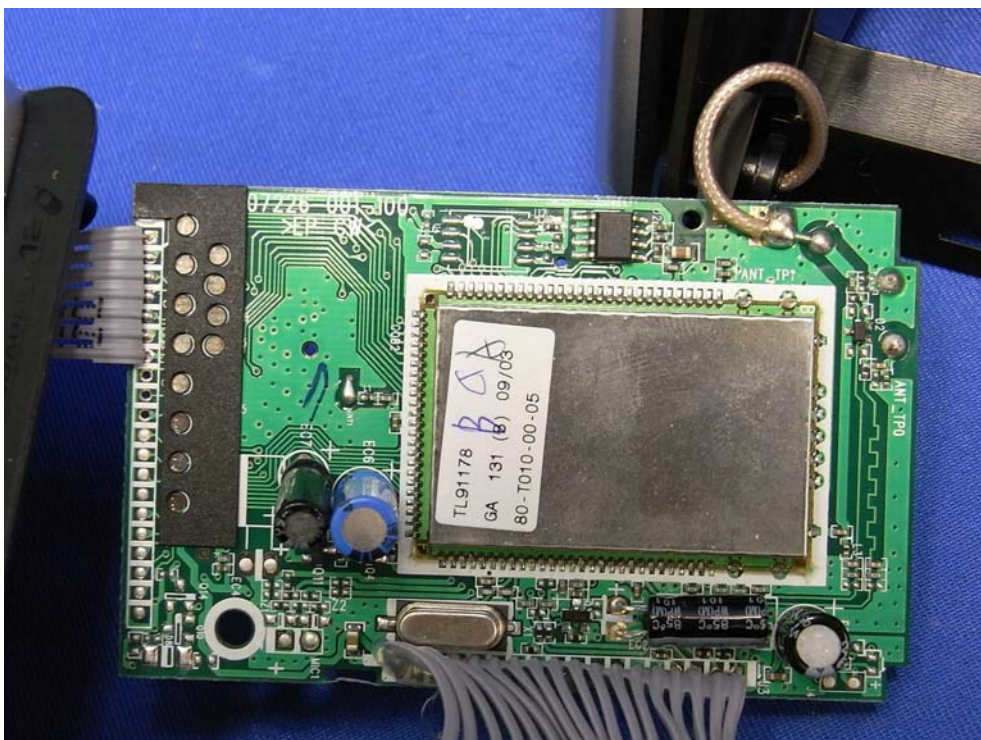
# INTERTEK TESTING SERVICES

## Internal photos

Line Interface & Power Management PCB solder side



DECT RF Module PCB comp side



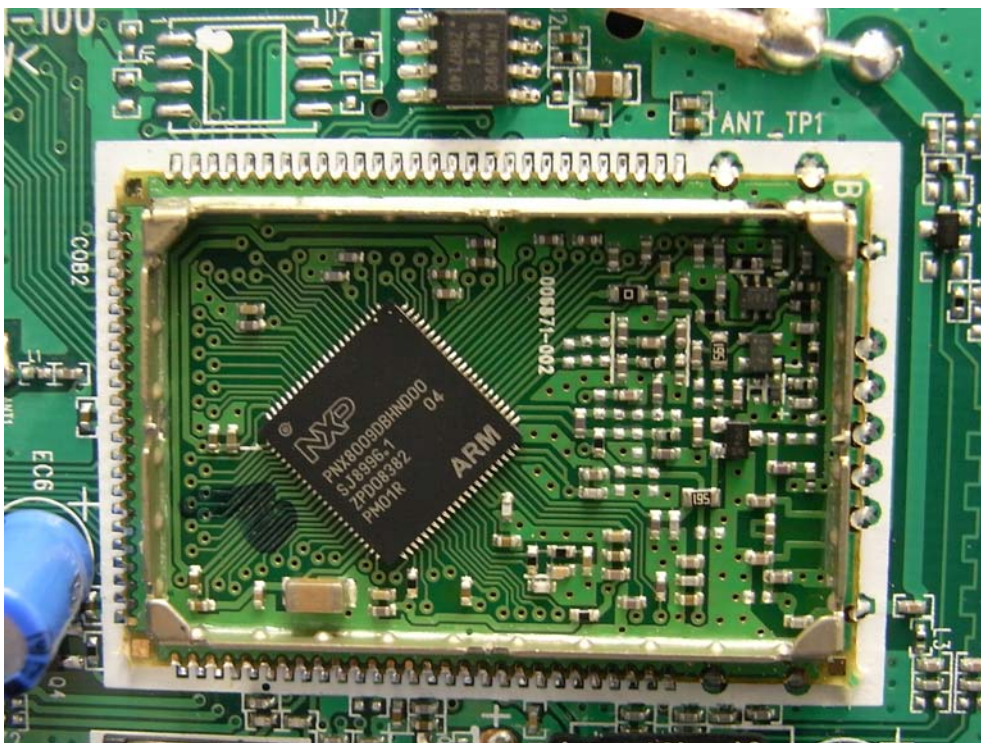
# INTERTEK TESTING SERVICES

## Internal photos

DECT RF Module PCB solder side and Bluetooth Module PCB comp side (View 1)



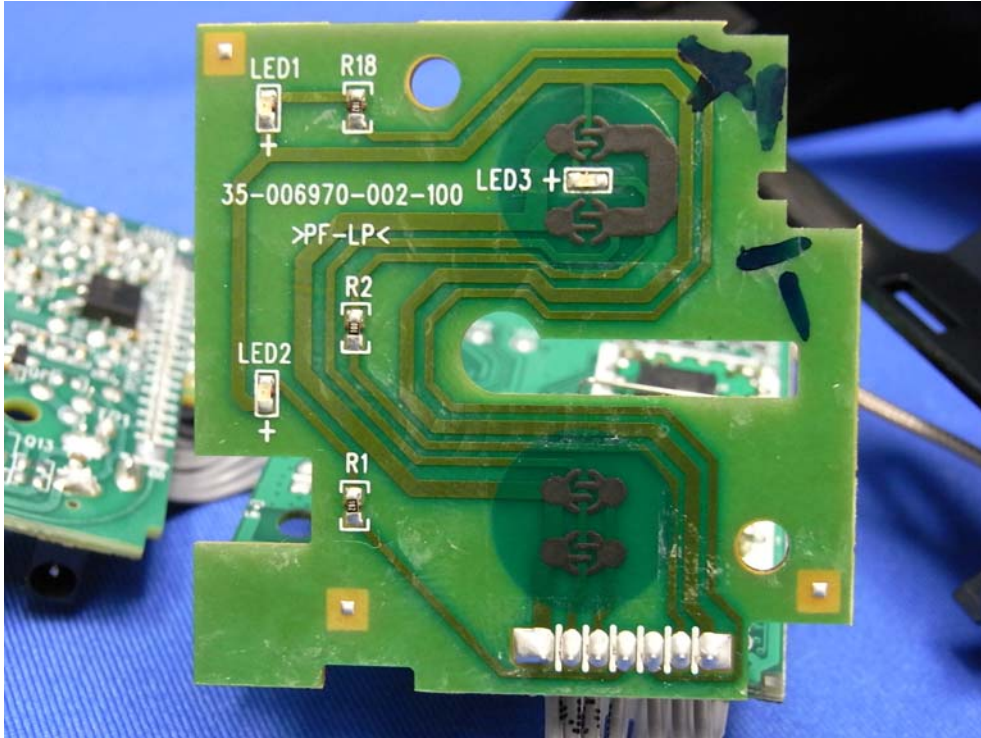
DECT Module PCB comp side



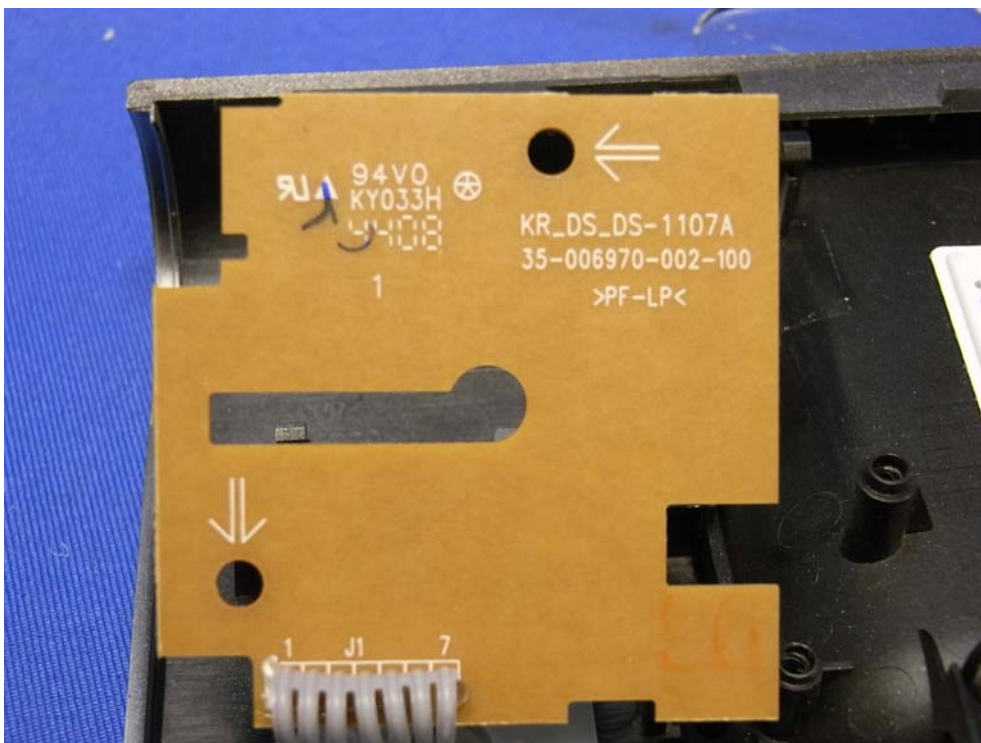
# INTERTEK TESTING SERVICES

## Internal photos

LCD display comp side



LCD display solder side

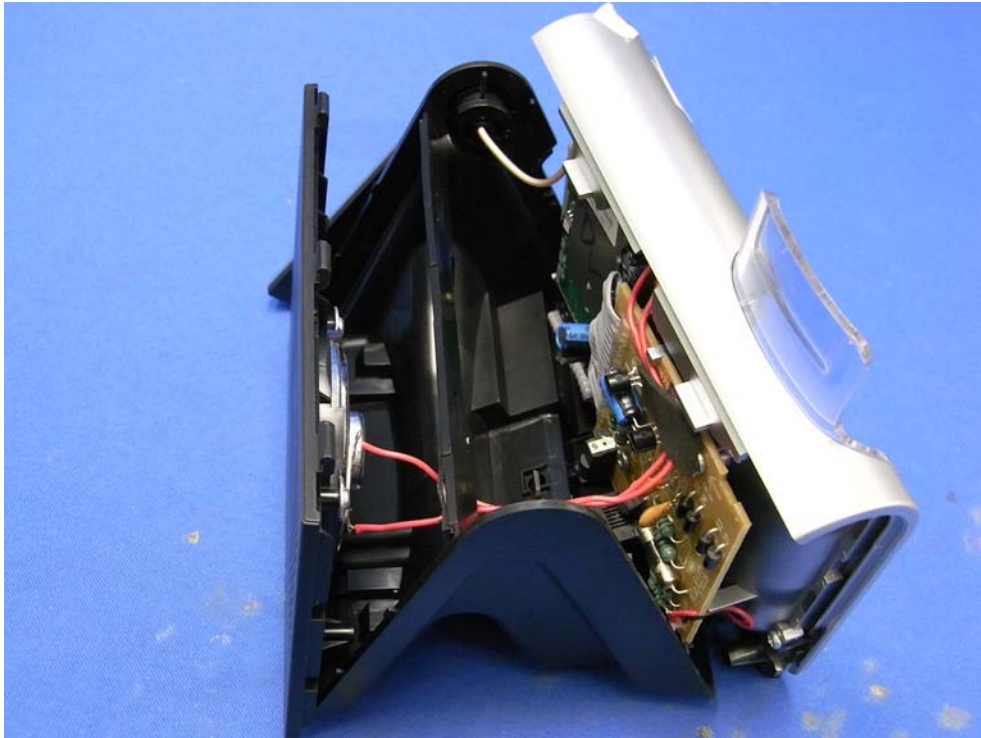


# INTERTEK TESTING SERVICES

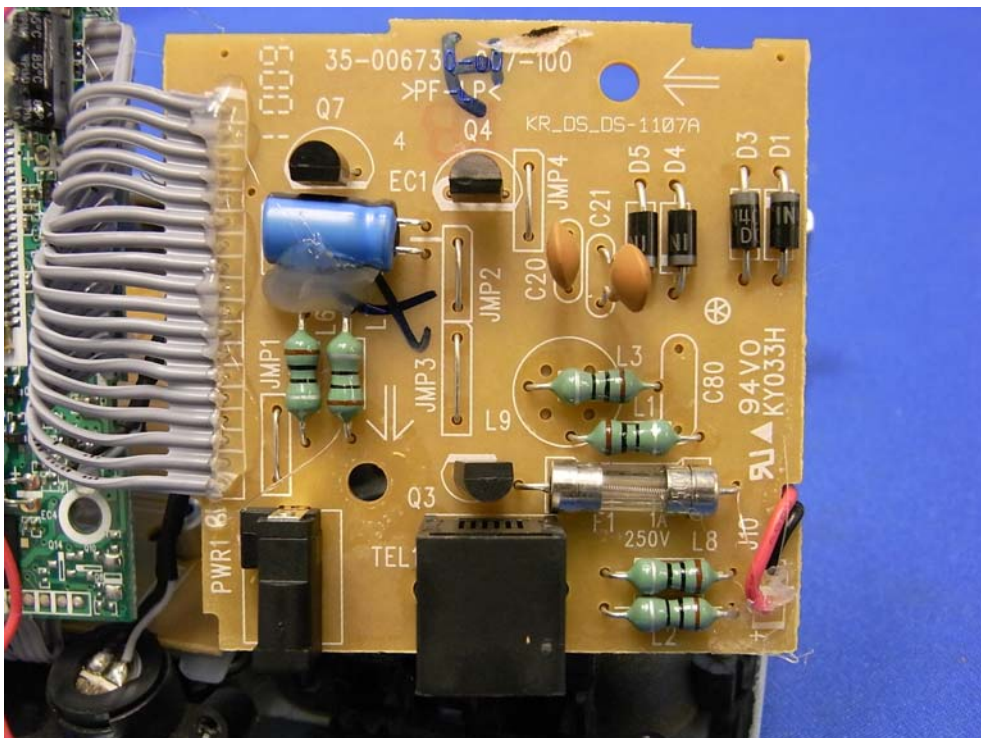
## Internal photos

Model TL92278

Base Unit assembly



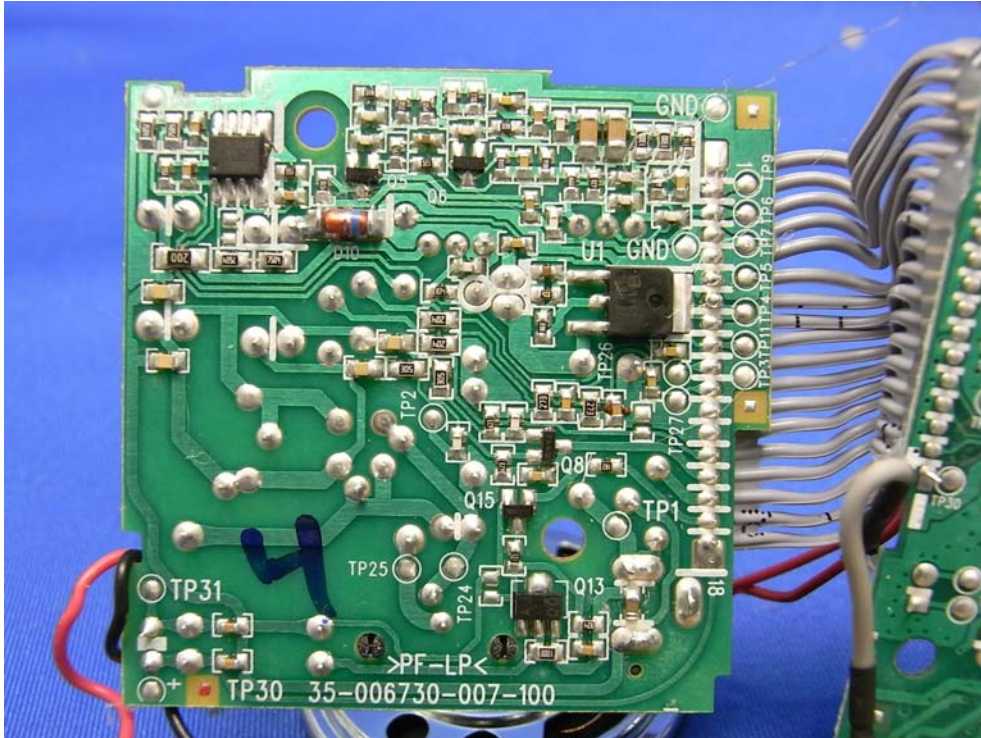
Line Interface & Power Management PCB comp side



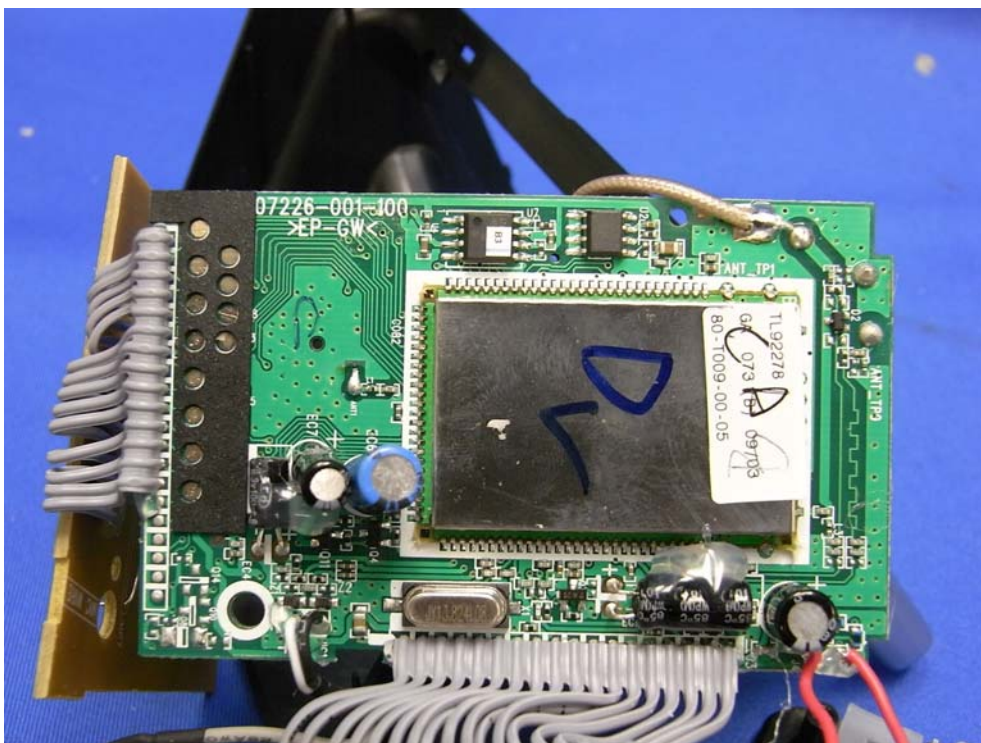
# INTERTEK TESTING SERVICES

## Internal photos

Line Interface & Power Management PCB solder side



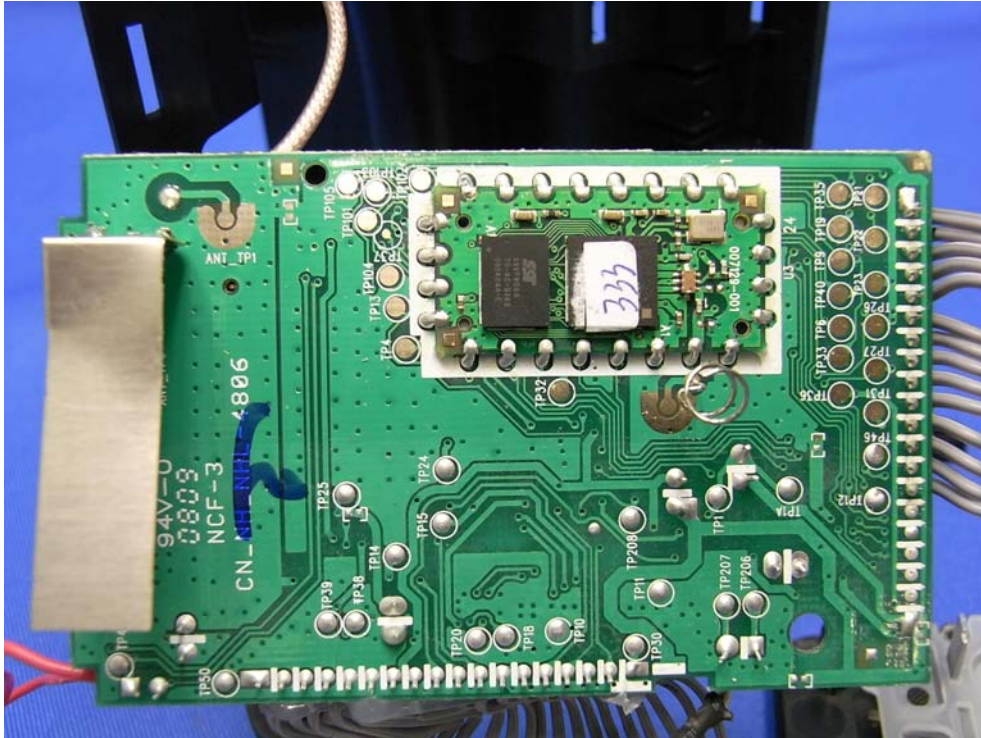
DECT RF Module PCB comp side



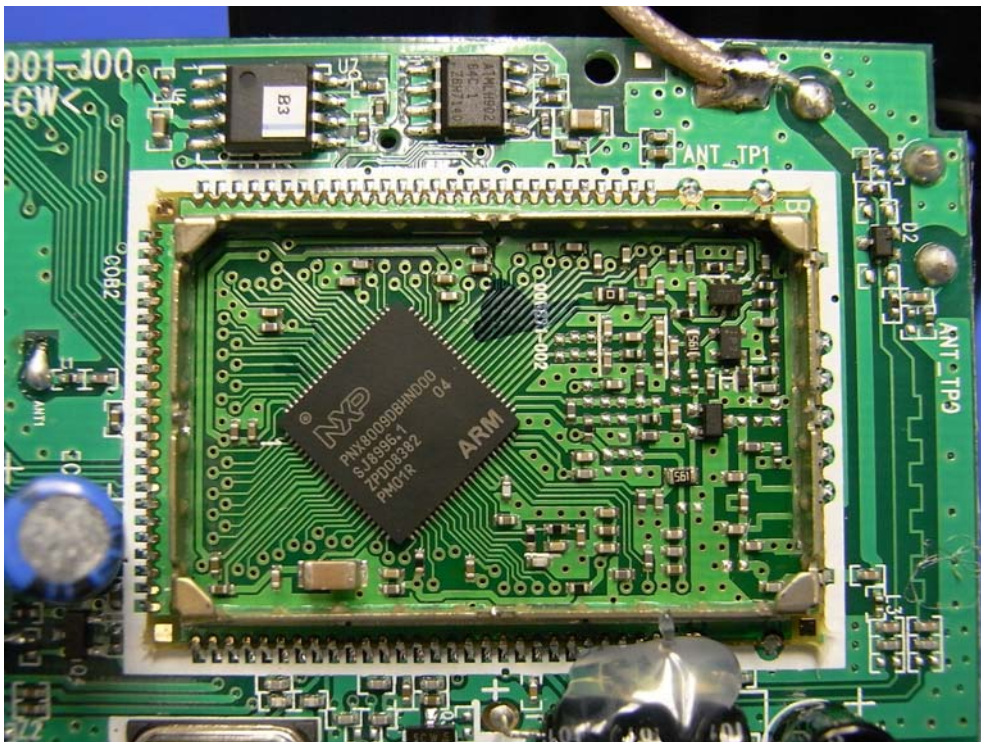
# INTERTEK TESTING SERVICES

## Internal photos

DECT RF Module PCB solder side and Bluetooth Module PCB comp side (View 1)



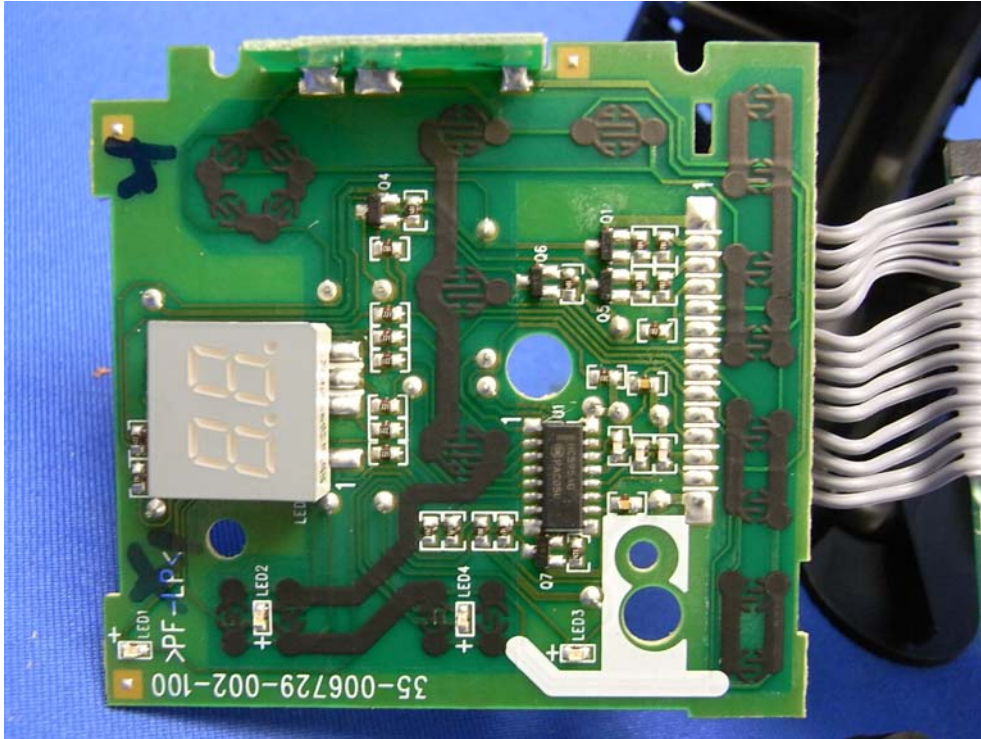
DECT Module PCB comp side



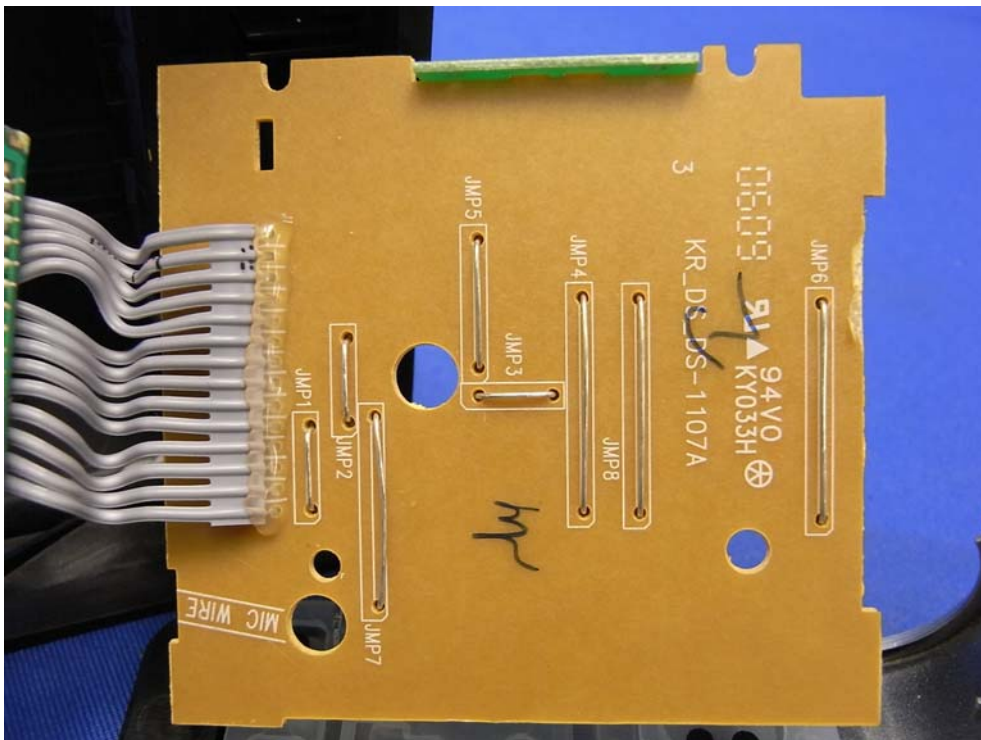
# INTERTEK TESTING SERVICES

## Internal photos

DAM Panel PCB comp side



DAM Panel PCB solder side



## INTERTEK TESTING SERVICES

---

### Internal photos

DAM Volume Button PCB comp side (permanently affixed)

