



at&t

User's manual

**TL78108/TL78208/TL78308/
TL78408 5.8 GHz cordless tele-
phone/answering system with
caller ID/call waiting**



Congratulations

on purchasing your
new AT&T product.

Before using this AT&T product, please
read the **Important safety instructions**
on pages 58-60 of this manual.

Please thoroughly read the user's
manual for all the feature operations
and troubleshooting information necessary to install
and operate your new
AT&T product. You can also visit our
website at **www.telephones.att.com**
or call **1 (800) 222-3111**.
In Canada, dial **1 (866) 288-4268**.

Model #: TL78108/TL78208/TL78308/TL78408

Product name: 5.8GHz cordless telephone/answering system

Serial #: _____

(found on the bottom of the telephone base)

Purchase date: _____

Place of purchase: _____



The ENERGY STAR® program (www.energystar.gov) recognizes and encourages the use of products that save energy and help protect our environment. We are proud to mark this product with the ENERGY STAR® label indicating it meets the latest energy efficiency guidelines.

You must install and charge the battery before using the telephone.



See page 7 for easy instructions.

For customer service or product information, please visit our website at www.telephones.att.com or call **1 (800) 222-3111**. In Canada, dial **1 (866) 288-4268**.

Add new handsets to make your telephone more versatile (see page 49)

Your telephone can accommodate up to four cordless handsets. You can add new handsets (model TL70008, sold separately) anytime, but each must be registered with the telephone base before use.

The handset provided with your TL78108 is automatically registered as handset 1. Additional handsets will be assigned numbers in the order they are registered (handset 2, handset 3, or handset 4). You can register a maximum of 4 handsets.

The TL78208 has two handsets automatically registered as handsets 1 and 2. You can register two additional handsets, which will then be assigned numbers 3 and 4.

The TL78308 has three handsets automatically registered as handsets 1, 2 and 3. You can register one additional handset, which will then be assigned number 4.

The TL78408 has four pre-registered handsets, so no additional handset can be added to the system.



Handset 1
(Model TL78108)
(Model TL78208)
(Model TL78308)
(Model TL78408)



Handset 2
(Model TL78208)
(Model TL78308)
(Model TL78408)



Handset 3
(Model TL78308)
(Model TL78408)



Handset 4
(Model TL78408)



NOTE: All four handsets can be used simultaneously, however only two can be used on one type of call at a time. For example, two handsets can be used on an outside call, while the other two handsets can be used on an intercom call at the same time.

User's manual

TL78108/TL78208/TL78308/ TL78408 5.8 GHz cordless telephone/answering system with caller ID/call waiting



Table of contents

Getting started

Quick reference guide.....	2
Parts checklist.....	4
Telephone base installation.....	5
Telephone base and charger installation	6
Battery installation & charging.....	7
Installation options.....	8
Belt clip & optional headset.....	10

Telephone operation

Basic handset operation	11
Basic telephone base operation	12
Options while on calls.....	13
Intercom calls	16
Intercom call transfer	17
Handset settings	19
Base settings.....	25

Directory

Directory.....	26
New directory entries.....	27
Directory search	29
To dial, delete or change entries...	31

Caller ID operation

Caller ID operation	33
To review the call log.....	36

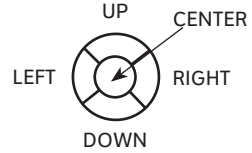
Answering system operation

Answering system operation.....	37
Day & time announcements.....	38
Outgoing announcement.....	39
Changing feature options.....	40
Message playback.....	41
Recording & playing memos	42
Message counter displays	43
Answering system mode.....	44
Remote access	45

Appendix

Screen icons, indicator lights & tones.....	46
Handset display screen messages....	47
Adding and replacing handsets...	49
Replacing a handset.....	50
Troubleshooting.....	51
Important safety instructions.....	58
FCC Part 68 and ACTA	61
FCC Part 15.....	62
Limited warranty	63
Technical specifications.....	66
Index.....	67

Quick reference guide Cordless handset



CID

Press to display caller ID information (page 36).

PHONE/FLASH

Press to make or answer a call. During a call, press to receive an incoming call if call waiting is activated (page 13).

MUTE/DELETE

While on a call, press to mute microphone (page 13). While reviewing the call log, press to delete an individual entry, or press and hold to clear the caller ID log (page 36). While predialing, press to delete digits (page 11).

SPEAKER

Press to activate handset speakerphone. Press again to resume normal handset use (page 11).

MENU/SELECT

Press to display the menu. When in the menu, press to select an item or save an entry or setting. Press up or down NavKey (UP or DOWN) to scroll up or down while in menus. While entering names or numbers, press left or right NavKey (LEFT or RIGHT) to move the cursor to the left or right.

DIR

Press to display directory entries (page 29).

OFF/CLEAR

During a call, press to hang up. While using menus, press to cancel an operation, back up to the previous menu, or exit the menu display.

REDIAL/PAUSE

Press to view redial memory (page 14). While entering numbers, press and hold to insert a dialing pause (page 12).

INT

Press to initiate an intercom conversation or transfer a call (pages 16-18).



Feature menu

> shows a highlighted item



Menu

Feature menu

DIRECTORY	Page 26
CALL LOG	Page 33
RINGER VOLUME.....	Page 20
RINGER TONE.....	Page 21
KEY TONE.....	Page 21
LANGUAGE.....	Page 22
CLR VOICE MAIL.....	Page 23
DIAL TYPE.....	Page 24

Using menus

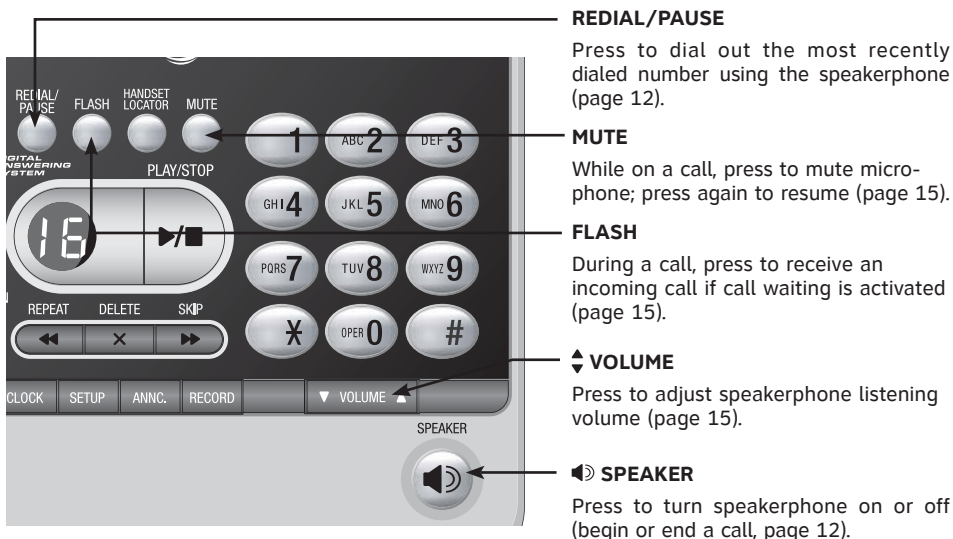
Press up or down NavKey (UP or DOWN) to scroll through menu items.

Press **MENU/SELECT** to select or modify a highlighted item.

Press **OFF/CLEAR** to cancel an operation, back up to the previous menu, or exit the menu display.

Quick reference guide

Telephone base



Answering system controls (pages 37-45)

◀ REPEAT

Press to repeat message; press twice, or once at the beginning of the date and time announced, to play previous message (page 41).

⏻ ANSWER ON

Press to turn answering system on or off.

CLOCK

Press to review or set clock (page 38).

SETUP

Press to listen to setup options (page 40).

▶/■ PLAY/STOP

Press to start or stop message playback (page 41).

DELETE

Press to delete message currently playing; hold to delete all old messages (page 41).

▶ SKIP

Press to skip message (page 41).

RECORD

Press to record a memo (page 42) or after pressing **ANNC.** to record an outgoing announcement (page 39).

ANNC

Press to review or record announcement; press again to quit (page 39).



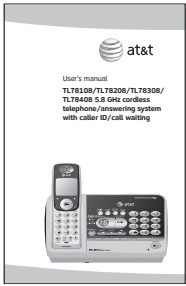
NOTE: Press ▶/■ **PLAY/STOP** to confirm your selection and exit the menu after changing your desired feature.

Getting started

Parts checklist

Save your sales receipt and original packaging in case it is necessary to ship your telephone for warranty service.

Check to make sure the telephone package includes the following. The model number of your phone can be found on the label located on the bottom of the telephone base.



User's manual



Quick start guide



Cordless handset(s)
(1 for TL78108)
(2 for TL78208)
(3 for TL78308)
(4 for TL78408)



Telephone base with mounting bracket installed



Charger for cordless handset(s)
(2 for TL78208)
(3 for TL78308)
(4 for TL78408)



Battery for cordless handset(s)
(1 for TL78108)
(2 for TL78208)
(3 for TL78308)
(4 for TL78408)



Battery compartment cover(s)
(1 for TL78108)
(2 for TL78208)
(3 for TL78308)
(4 for TL78408)



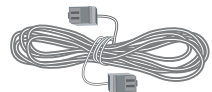
Power adapter for telephone base



Power adapter for handset charger(s)
(2 for TL78208)
(3 for TL78308)
(4 for TL78408)



Belt clip for cordless handset(s)
(1 for TL78108)
(2 for TL78208)
(3 for TL78308)
(4 for TL78408)



Telephone line cord

Telephone base installation

Choose a central location close to a telephone jack and a power outlet not connected to a wall switch. The telephone base can be placed on a flat surface or mounted on a standard wall plate. For optimum range and better reception, place the telephone base in a high and open location.

Avoid placing the telephone base too close to:

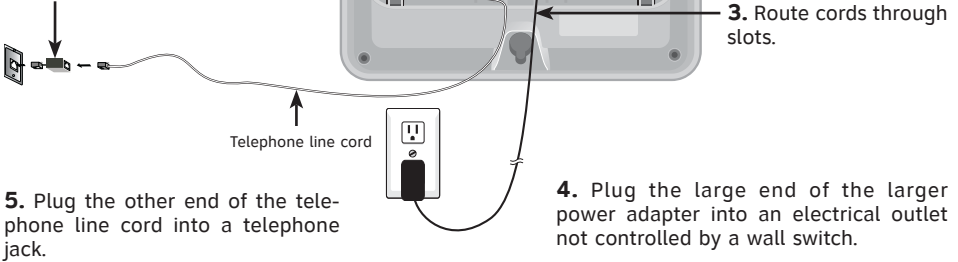
- Communication devices such as: personal computers, computer routers, television sets, VCRs, wireless routers (wireless broadband, wi-fi, or 802.11) or other cordless telephones.
- Excessive heat sources.
- Noise sources such as a window with traffic outside, motors, microwave ovens, refrigerators, or fluorescent lighting.
- Excessive dust sources such as a workshop or garage.
- Excessive moisture.
- Extremely low temperature.
- Mechanical vibration or shock such as on top of the washing machine or work bench.

Telephone base and charger installation

1. Plug one end of the telephone line cord into the telephone jack at the bottom of the telephone base.

2. Plug the small end of the larger power adapter into the power jack at the bottom of the telephone base.

DSL filter
(Optional for DSL users,
see Note No. 4 below)



a. Plug the small end of the smaller power adapter into the jack on the underside of the charger, then route the cord through the slots as shown.

b. Plug the large end of the smaller power adapter into an electrical outlet not controlled by a wall switch.

c. The battery may have enough charge to allow for some calls. For best performance, place handset in telephone base or charger to charge for at least 16 hours before first use.



NOTES:

1. Use only the provided power cord. If you need a replacement, visit our website at www.telephones.att.com or call **1 (800) 222-3111**. In Canada, dial **1 (866) 288-4268**.
2. Be sure to use an electrical outlet not controlled by a wall switch.
3. This power adapter is intended to be correctly oriented in a vertical or floor mount position. The prongs are not designed to hold the plug in place if it is plugged into a ceiling, under-the-table or cabinet outlet.
4. If you receive high speed internet through your telephone line (commonly referred to as DSL) and you are experiencing interference during telephone conversations and/or your caller ID features are not functioning properly, install a DSL filter to the telephone line between the telephone base and the telephone wall jack. Contact your DSL service provider for a DSL filter.

Battery installation & charging

After installing the battery, it may have enough charge to allow some calls. For best performance, place each handset in the telephone base or a charger and allow to charge for 16 hours before use. You can keep the batteries charged by returning the handsets to the telephone base or chargers after each use. When the battery is fully depleted, a recharge takes about 16 hours. The average talk time on a fully charged battery is about eight hours depending on environmental conditions, and the standby time is approximately three days.



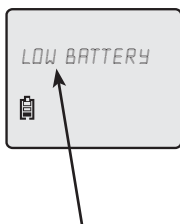
1. Plug the battery securely into the plug inside the handset battery compartment, matching the color-coded label.



2. Place the battery and wires neatly inside the compartment.



3. Slide the battery compartment cover towards the center until it clicks into place.



Low battery indicator

Return handset to telephone base or charger to recharge when this symbol flashes, the handset screen is dim or completely clear. (Handset will beep when battery is low.)



To replace the battery, press down and push outward on the tab to open the battery compartment cover. Remove the old battery and disconnect it from the compartment. Follow the instructions on this page to install and charge the new battery.

 **Caution:** Use only the supplied rechargeable battery or replacement battery (model 27910, part number 89-0099-00-00). To order, visit our website at www.telephones.att.com or call **1 (800) 222-3111**. In Canada, dial **1 (866) 288-4268**.