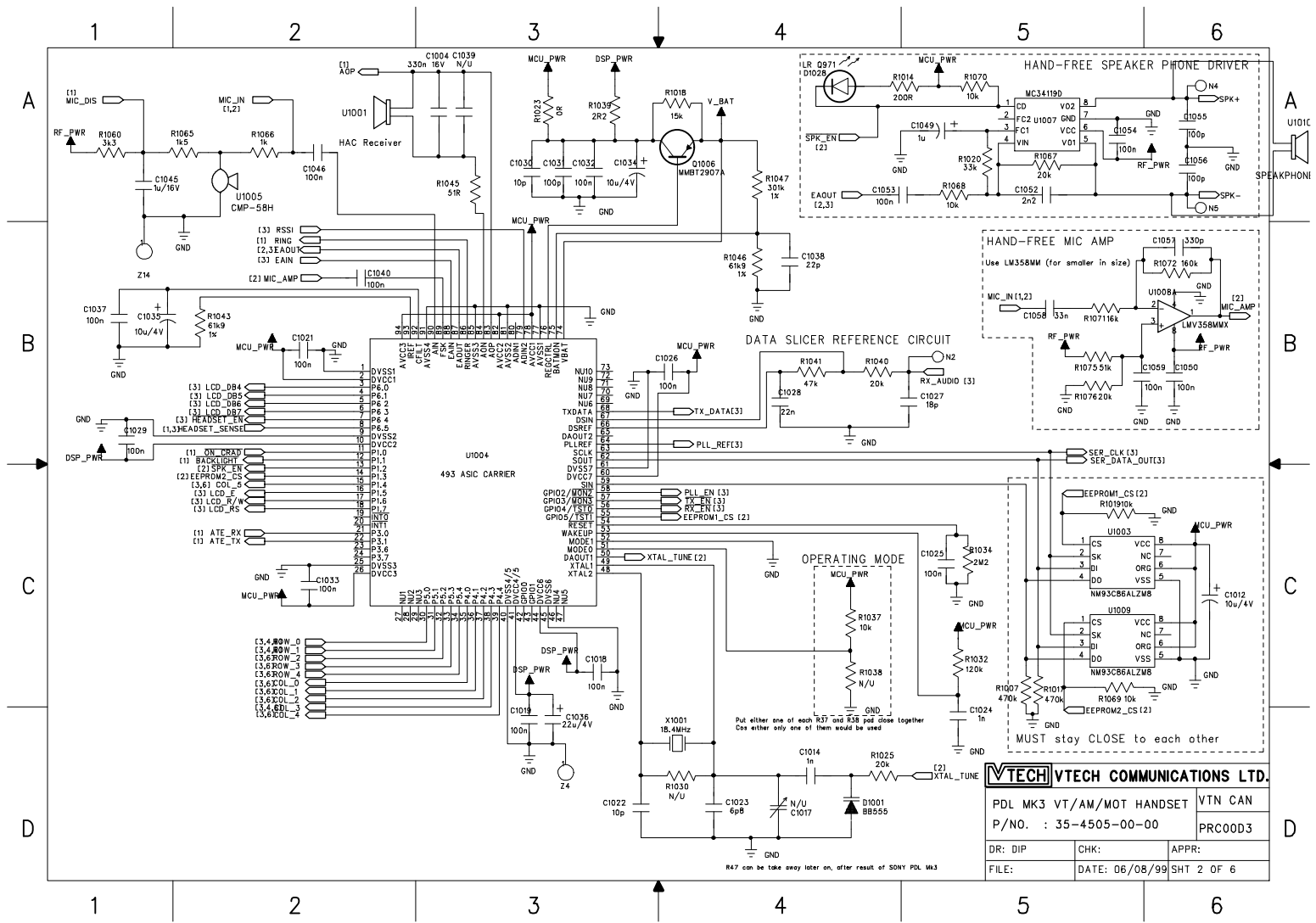


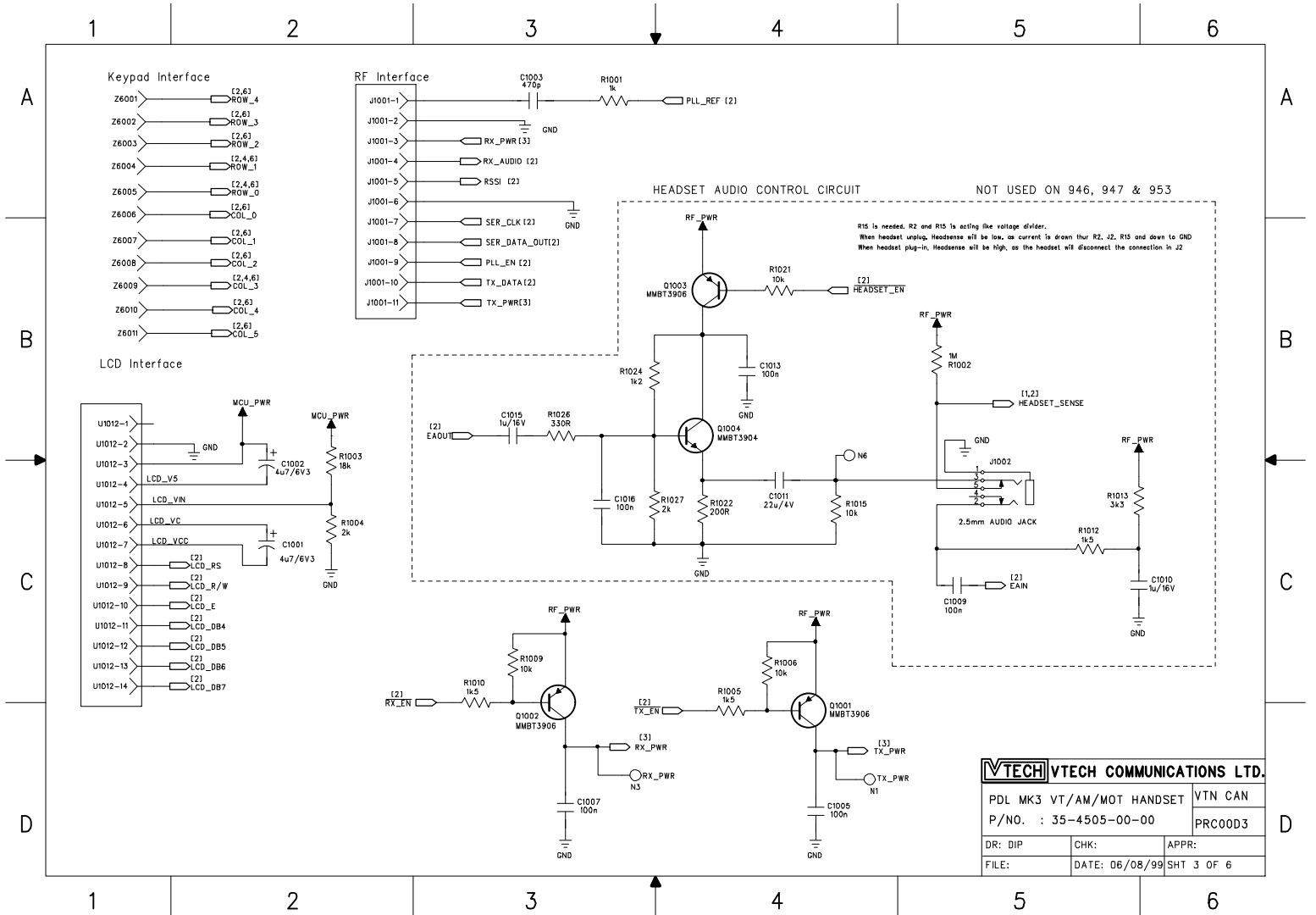
<b>VTECH VTECH COMMUNICATIONS LTD.</b>		
PDL MK3 VT/AM/MOT HANDSET	VTN CAN	
P/N.O. : 35-4505-00-00	PRC	
DR: DIP	CHK:	APPR:
FILE:	DATE: 06/08/99	SHT 1 OF 6



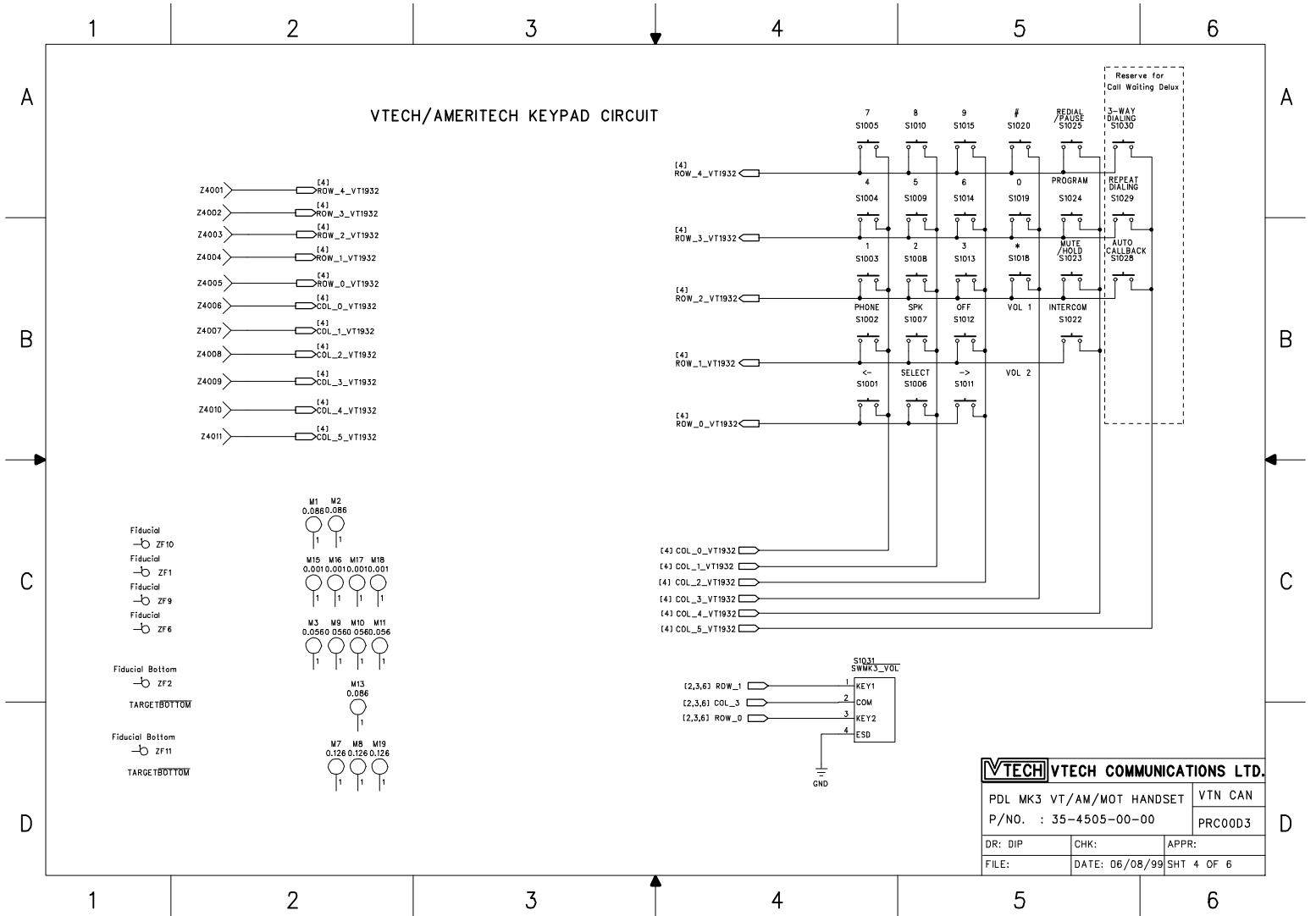
**VTECH COMMUNICATIONS LTD.**

PDL MK3 VT/AM/MOT HANDSET	VTN CAN	
P/N.O. : 35-4505-00-00	PRC00D3	
DR: DIP	CHK:	APPR:
FILE:	DATE: 06/08/99	SHT 2 OF 6

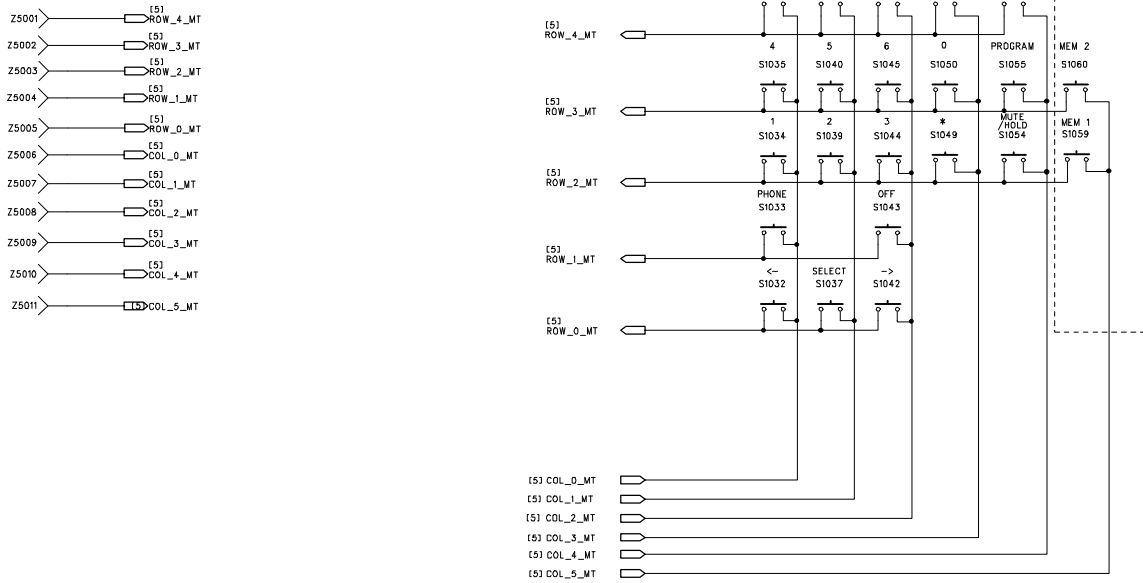
BA7 can be take away later on, after result of SONY PDL MK3



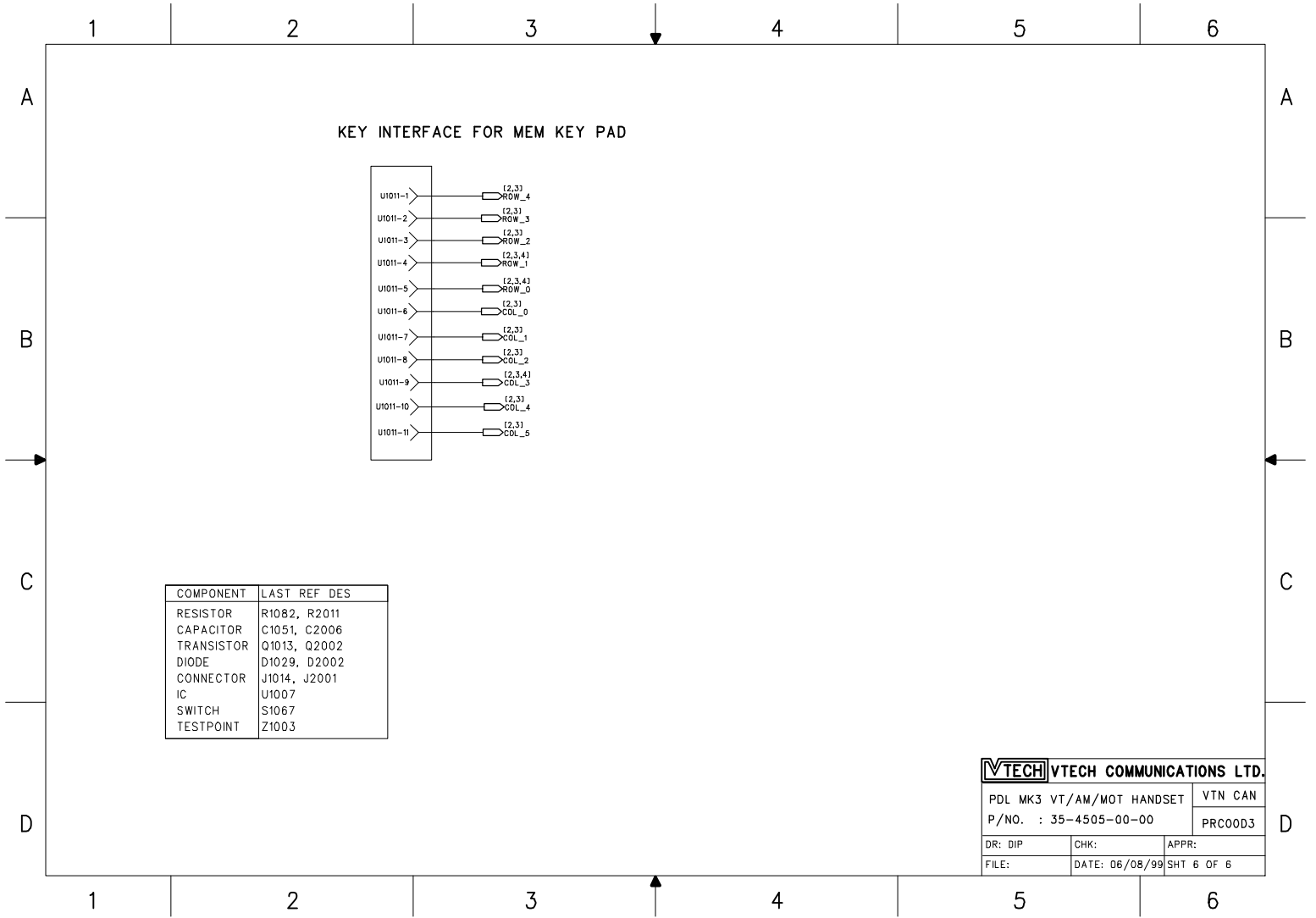
<b>VTECH COMMUNICATIONS LTD.</b>		
PDL MK3 VT/AM/MOT HANDSET	VTN CAN	
P/N/O. : 35-4505-00-00	PRC00D3	
DR: DIP	CHK:	APPR:
FILE:	DATE: 06/08/99	SHT 3 OF 6



MOTOROLA KEYPAD CIRCUIT



<b>VTECH VTECH COMMUNICATIONS LTD.</b>		
PDL MK3 VT/AM/MOT HANDSET		VTN CAN
P/N.O. : 35-4505-00-00		PRC00D3
DR: DIP	CHK:	APPR:
FILE:	DATE: 06/08/99	SHT 5 OF 6



ECO update (Details on changes between each version)

D1a : Base on original file called "444205" and renamed to "HSPDL01a"  
 D1b : Change all reference from "R1001" format to "RT" by going to ECO/RENAME in PCB (HSPDL01A.PCB)  
 an output ECO file will be created as a result. And then use this ECO file and do a "Backward annotate from PCB" in SCH (HSPDL01A.SCH)  
 D1c : Added new circuitry such as "Inductive charger", "Handfree Speaker" & "Hand-free MIC AMP"  
 D1d : Separate single GND to all different GND  
 D1e : Continue from HSPDL01c  
 Key Connectors on Sheet 3 & 6 have changed  
 Line 1 & Line 2 LED need to add back on.  
 SPK\_LED is activate by SPK\_EN  
 D1f : Chi uses this SCH in doing modification for PCB layout.  
 Inductive circuit use BAS16T for general purpose SMD diode  
 D1g : Modification by David on top of the previous 01f by Chi  
 Keypad SCH for (VT1932/1962) has been added.  
 D1h : Take away all unnecessary backlighting Key from 8 LEDs down to 4. Take away any as much N/U parts away from sch as possible.  
 D1i : Keypad SCH for (Motorola PDL-c) has been added.  
 D1j : Changed headset plug to SMD version  
 Resistors are added in parallel with Q8 & Q6 / Value has changed for C4, C28, C22, C23, R25  
 D1k : Delete the carbon fingers of "COL\_5\_VT1932" on sheet 4 and add a small board for volume control direct connect to "COL\_5" of ASIC  
 D1L : Separate different power trace (V\_BAT, RF\_PWR, A\_PWR & D\_PWR)  
 D1m : Separate different ground trace (ESD\_GND, A\_GND, D\_GND & RF\_RND)  
 D1n : Relocate Volume Keys in Col\_3. Grouped all PPU, MEM & future CID Delux keys to use Col\_5.  
 Mk3a\_02a : Direct copied from Mk3a\_01b  
 D2b : Change all ref des to 1000 series  
 Change D102B from Green LED to Red / Change all components in inductive charger section to N/U  
 Change U1005 (MC) from 60H to 58H / Change all Green backlight LED fro MOT to N/U  
 D2d : Was for PA release (before Danish and Julian comments)  
 D1005 : RLZ 5.68 -> N/U (Wrong PCB Decal for RLZ 5.68)  
 R1049 : OR -> N/U (Due to D1005 no longer connect to GND)  
 D1014 : New part added (Correct PCB decal for RLZ 5.68)  
 D1011 : D11 -> D1011 (Was D11 and now changed to 1000 series format)  
 Delete M4, M5 and M6  
 Mk3a\_03a : Direct copied from Mk3a\_02d  
 D3b : 1st PA release version (after Danish and Julian comments) (refer to folder ...99-pdm3/Rel\_pa/V1\_am)  
 Change all audio related net (was connected to A\_PWR) to RF\_PWR  
 C1020 : 10n -> 100n (better decoupling)  
 R1016 : N/U -> 200k (improve charging performance)  
 C1037 : 1u/16V/0805 -> 100n/0805 (better performance at high frequency)  
 C1023 : 8p2 -> 6p8 (updated value for crystal section)  
 R1007 : New part added -> 470k (Stabilize EEPROM against ESD)  
 R1017 : New part added -> 470k (Stabilize EEPROM against ESD)  
 R1033, R1035 & R1036 : Parts deleted (Speed up LCD response)  
 R1020 : New part added -> 33k (to reduce C1049 to 1u)  
 C1049 : 10u/4V -> 1u/4V (to speed up speakerphone response)  
 R1023 : L1003/0.56uH/0603 -> OR/0603  
 Q1013 : Part deleted (pull down by ASIC)  
 R1039 : 5R1 -> 2R2  
 C1040 : New part added -> 100n (AC coupler for Mic\_Amp)  
 C1036 : New part added -> 22u/4V Tantam (Decouple noise from DSP\_PWR)  
 D3c : Exactly same as 03b  
 D3d : 2nd PA version release (refer to folder ...99-pdm3/Rel\_pa/V1\_am for BOM release)  
 J400x, J500x, J600x -> Z400x, Z500x, Z600x  
 J1003 -> U1011 (Key Membrane)  
 J1008 & J1009 -> Y1008 & Y1009 (Battery Contact)  
 J1010 -> U1012 (LCD Connector)  
 TP1 -> N1 (TX\_PWR Test Point)  
 TP2 -> N2 (RX\_AUDIO Test Point)  
 TP3 -> N3 (RX\_PWR Test Point)  
 TP4 -> N4 (SPK+ Test Point)  
 TP5 -> N5 (SPK- Test Point)  
 TP6 -> N6 (Headphone Test Point)  
 J1007 -> N7 (ATE Test Point)  
 Z2 & Z11 -> ZF2 & ZF11 (Fiducial Bottom)  
 Z1, Z6, Z9 & Z10 -> ZF1, ZF6, ZF9 & ZF10 (Fiducial)  
 M14 : Deleted

D3e : 3rd PA version release (refer to folder ...99-pdm3/Rel\_pa/V1\_am for BOM & ECO release)  
 Incorporate with all changes happened in version 02d and 03b with their respected VTECH P/N (before it was only value has changed)

A

A

B

B

C

C

D

D

<b>VTECH</b>		ENGINEERING CANADA LTD. TELECOM DIVISION
PDL MK3 VT/AM/MOT HANDSET	PRC	###
	900ADL	
P/NO. : 35-4505 & 35-4555	XXXX0000.SCH	XXXX-00.PCB
CHK:	APPR:	DATE: 06/01/99
DATE:	DATE:	SHEET X OF X