

Go to www.vtechphones.com to register your product for enhanced warranty support and the latest VTech product news.

VM3252 VM3252-2 Video Monitor



For more support information

vtech® Quick start guide



The *Heart Beat* sound file was created by Karabaden, and is used under the Creative Commons license. The *Chickens At Night* sound file was created by Mike Keating, and is used under the Creative Commons license. The *Stream Noise* sound file was created by Caroline Ford, and is used under the Creative Commons license. The *Background Noise* sound file was created by Caroline Ford, and is used under the Creative Commons license.



© 2020 VTech Communications, Inc. All rights reserved.

Speakers are subject to change without notice.

Parent unit battery: 3.6V Ni-MH battery (Corun)
Rated output: 6V DC @ 500mA
1. VTECH VT05EUS060050 or 2. Tmpoa. 5003G0U600050.
Parent unit/baby unit power adapters:
Maximum power allowed by FCC and IC: Actual operating range may vary according to environmental conditions at the time of use.
Normal effective range (QVA 320x240 pixel)
LCD 2.8" Color LCD
Channels 32
Transmit frequency Baby unit: 2405 - 2475 MHz
Parent unit: 2405 - 2475 MHz
Frequency control Crystal controlled PLL synthesizer

TECHNICAL SPECIFICATIONS

IMPORTANT SAFETY INSTRUCTIONS

The applied nameplate is located at the bottom of the baby unit's base.

When using your equipment, basic safety precautions should always be followed to reduce the risk of fire, electric shock and injury, including the following:

- Follow all warnings and instructions marked on the product.
- Adult setup is required.
- CAUTION:** Do not install the baby unit at a height above 2 meters.
- This product is not a substitute for adult supervision of the infant. Supervising the infant is the parent's or caregiver's responsibility. This product could cease operating, and therefore you should not assume it will continue working properly for any given period of time. Further, this is not a medical device and should not be used as such. This product is intended to assist you in supervising your baby. Do not use this product near water. For example, do not use it next to a bath tub, wash bowl, kitchen sink, laundry tub or swimming pool, or in a wet basement or shower.

CAUTION: Use only the battery provided. There may be a risk of explosion if a wrong type of battery is used for the parent unit. The battery cannot be subjected to high or low extreme temperature and low air pressure at high altitude during use, storage or transportation. Disposal of battery into fire or a hot oven, or mechanically crushing or cutting or the battery can result in an explosion. Leaving the battery in an extremely high temperature surrounding environment can result in an explosion or the leakage of flammable liquid or gas. Battery subjected to extremely low air pressure may result in an explosion or the leakage of flammable liquid or gas. Dispose of used battery according to the information in the **RRRC seal**.

- Use only the adapters included with this product. Incorrect adapter polarity or voltage can seriously damage the product.
- The power adapters are intended to be correctly oriented in a vertical or floor mount position. The prongs are not designed to hold the plug in place if it is plugged into a ceiling, under-the-table or cabinet outlet.
- For pluggable equipment, the socket-outlet shall be installed near the equipment and shall be easily accessible.
- Unplug this product from the wall outlet before cleaning. Do not use liquid or aerosol cleaners. Use a damp cloth for cleaning.

- Do not cut off the power adapters to replace them with other plugs, as this causes a hazardous situation.
- Do not allow anything to rest on the power cords. Do not install this product where the cords may be walked on or crimped.
- This product should be operated only from the type of power source indicated on the marking label. If you are not sure of the type of power supply in your home, consult your dealer or local power company.
- Do not overload wall outlets or use an extension cord.
- Do not place this product on an unstable table, shelf, stand or other unstable surfaces.
- This product should not be placed in any area where proper ventilation is not provided. Slots and openings in the back or bottom of this product are provided for ventilation. To protect them from overheating, these openings must not be blocked by placing the product on a soft surface such as a bed, sofa or rug. This product should never be placed near or over a radiator or heat register.
- Never push objects of any kind into this product through the slots because they may touch dangerous voltage points or create a short circuit. Never spill liquid of any kind on the product.

- To reduce the risk of electric shock, do not disassemble this product, but take it to an authorized service facility. Opening or removing parts of the product other than specified access doors may expose you to dangerous voltages or other risks. Incorrect reassembling can cause electric shock when the product is subsequently used.
- You should test the sound reception every time you turn on the units or move one of the components.
- Periodically examine all components for damage.
- There is a very low risk of privacy loss when using certain electronic devices, such as baby monitors, cordless telephones, etc. To protect your privacy, make sure this product has never been used before purchase, reset the baby monitor periodically by powering off and then powering on the units, and power off the baby monitor if you will not use it for some time.
- Children should be supervised to ensure that they do not play with the product.
- The product is not intended for use by persons (including children) with reduced physical, sensory or mental capabilities, or lack of experience and knowledge, unless they have been given supervision or instruction concerning use of the appliance by a person responsible for their safety.

SAVE THESE INSTRUCTIONS

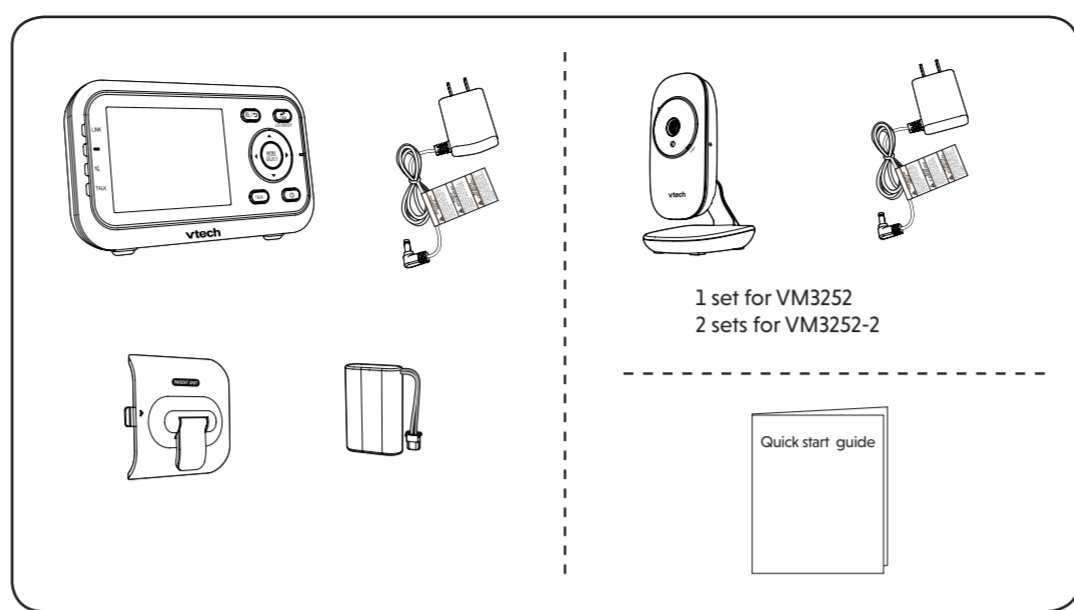
- Cautions**
- Use and store the product at a temperature between 32°F and 104°F.
 - Do not expose the product to extreme cold, heat or direct sunlight. Do not put the product close to a heating source.
 - Batteries should not be exposed to excessive heat such as bright sunshine or fire.

- Warning—Strangulation Hazard—Children have STRANGLED in cords.** Keep this cord out of the reach of children (more than 3 ft (0.9m) away). Do not remove this tag.
- Never place the baby unit(s) inside the baby's crib or playpen. Never cover the baby unit(s) or parent unit with anything such as a towel or a blanket.
- Other electronic products may cause interference with your baby monitor. Try installing your baby monitor as far away from these electronic devices as possible: wireless routers, radios, cellular telephones, intercoms, room monitors, televisions, personal computers, kitchen appliances and cordless telephones.

Precautions for users of implanted cardiac pacemakers
Cardiac pacemakers (applies only to digital cordless devices):
Wireless Technology Research, LLC (WTR), an independent research entity, led a multidisciplinary evaluation of the interference between portable wireless devices and implanted cardiac pacemakers. Supported by the U.S. Food and Drug Administration, WTR recommends to physicians that:
Pacemaker patients
• Should keep wireless devices at least six inches from the pacemaker.
• Should NOT place wireless devices directly over the pacemaker, such as in a breast pocket, when it is turned ON.

WTR's evaluation did not identify any risk to bystanders with pacemakers from other persons using wireless devices.
Electromagnetic fields (EMF)
This VTech product complies with all standards regarding electromagnetic fields (EMF). If handled properly and according to the instructions in this user's manual, the product is safe to be used based on scientific evidence available today.

WHAT'S IN THE BOX



1 CONNECT THE BABY MONITOR

Install the battery
The parent unit runs on rechargeable battery or AC power. To continuously monitor your baby, make sure you use both battery and AC power at the same time. With the battery alone, the parent unit can cordlessly run for a short time only.

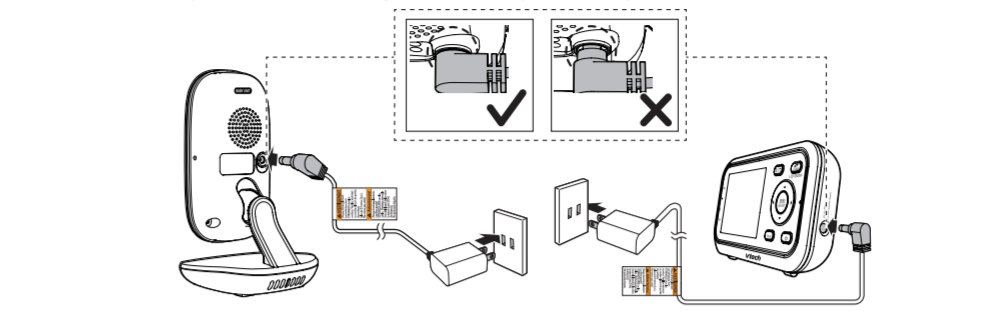
- NOTES**
- Use only the battery supplied with this product.
 - If the parent unit will not be used for a long time, disconnect and remove the battery to prevent possible leakage



Replace the battery
To replace the battery, press down on the battery compartment cover and pull it out, then follow the steps above to install the battery.

Connect the baby monitor

- NOTES**
- Use only the power adapters supplied with this product.
 - Make sure the baby monitor is not connected to the switch controlled electric outlet.
 - Connect the power adapters in a vertical or floor mount position only. The adapters' prongs are not designed to hold the weight of baby monitor, so do not connect them to any ceiling, under-the-table, or cabinet outlets. Otherwise, the adapters may not properly connect to the outlets.
 - Make sure the parent unit, the baby unit and the power adapter cords are out of reach of children.

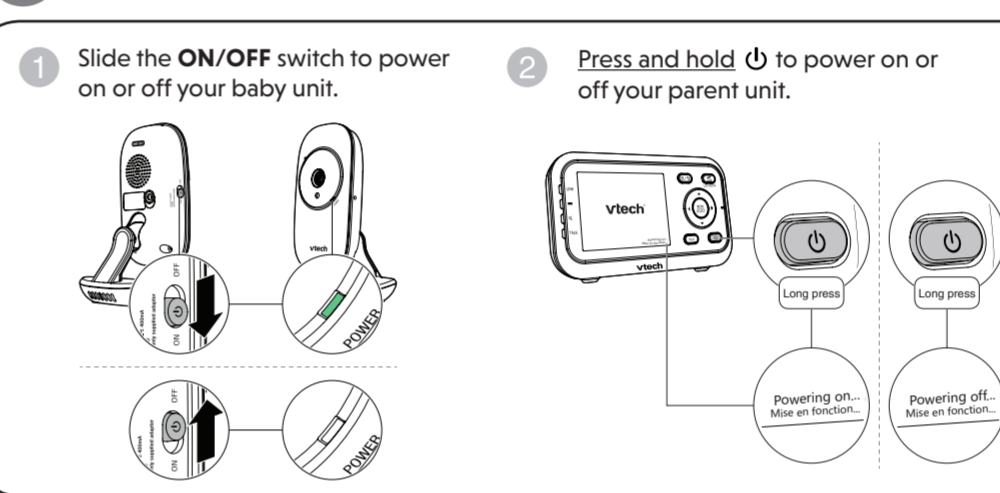


Charge the parent unit battery

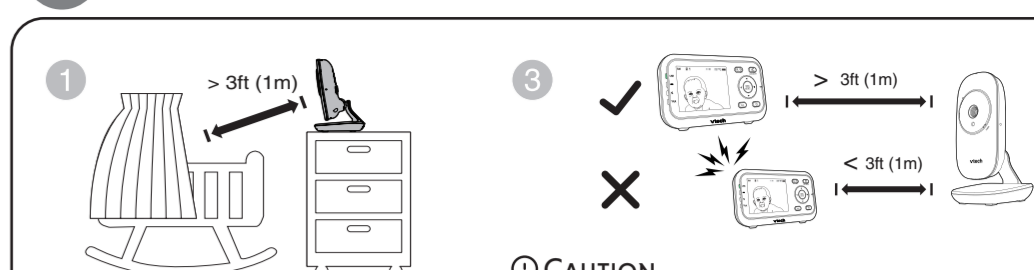
When you have connected and turned on the parent unit, the battery will be charged automatically.

- NOTES**
- Before using the baby monitor for the first time, charge the parent unit battery for 12 hours. When the parent unit battery is fully charged, the battery icon becomes solid.
 - It takes longer to charge the battery when the parent unit is turned on. To shorten the charging time, turn the parent unit off while charging.
 - The standby time varies depending on the sensitivity level you set, your actual use and the age of the battery.

2 POWER ON OR OFF THE BABY MONITOR

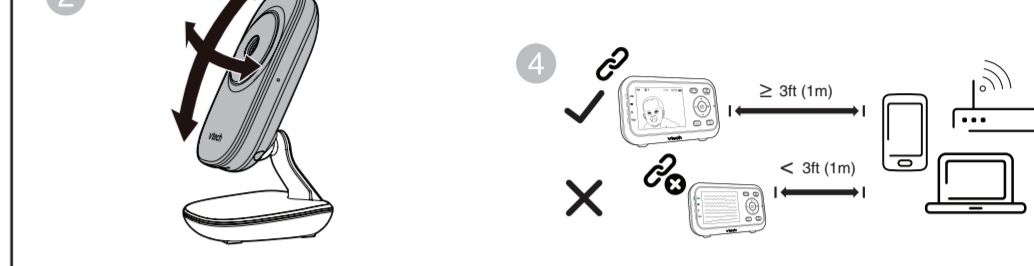


3 POSITIONING THE BABY MONITOR



CAUTION

- The default volume of your parent unit is level 3, and the maximum volume is level 5. If you experience high-pitched screeching noise from your baby monitor while positioning:
 - Make sure your baby unit and parent unit are more than 1 meter (3 feet) apart, OR
 - Turn down the volume of your parent unit.



NOTE

- To avoid interference from other electronic devices, place your baby monitor at least 3 feet (1 meter) away from devices such as wireless routers, microwaves, cell phones and computers.

4 STATUS CHECK

Once you power on both your baby unit and parent unit, your parent unit displays image from the baby unit, and the **LINK** LED light turns on.

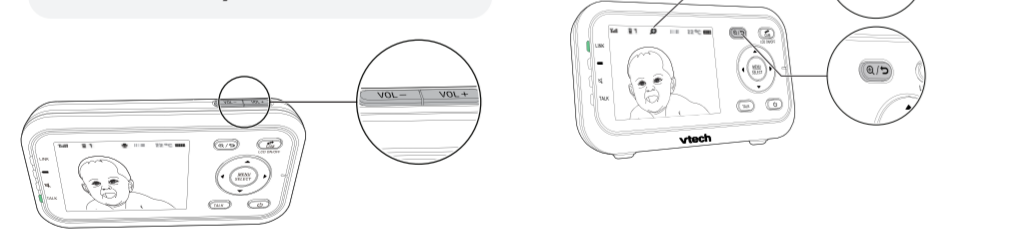


The **POWER** LED light of baby unit turns on.

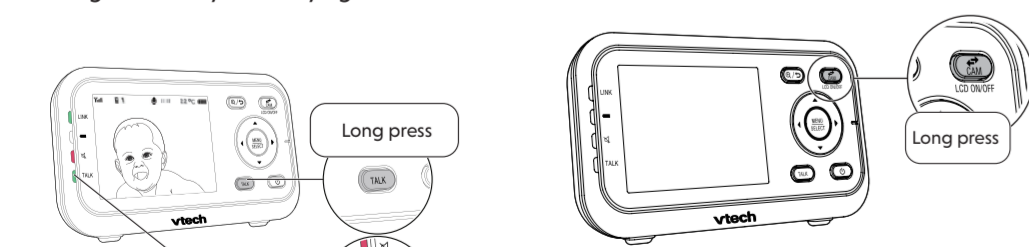
BASIC OPERATION - PARENT UNIT

Adjust speaker volume
Press **VOL+** / **VOL-** to adjust your parent unit speaker volume.

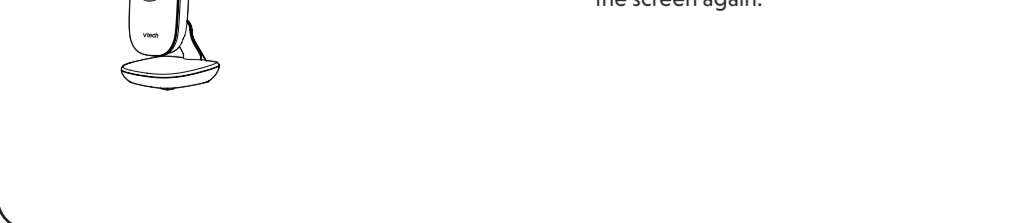
The sound sensitivity setting also affects the speaker volume. For details, refer to **Sound sensitivity and sound activation**.



Talk to your baby unit
Press and hold **TALK** and speak to your parent unit. Your voice is transmitted to the baby unit. Release **TALK** when finish talking and hear your baby again.

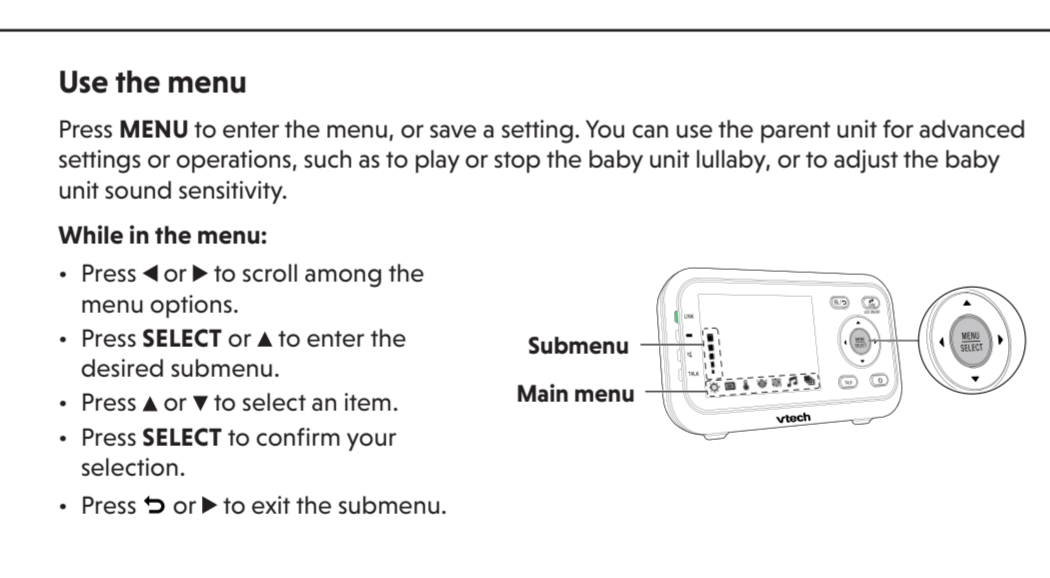


Turn off the screen
Press and hold **LCD ON/OFF** to switch off the screen. You can still hear sound from the selected baby unit.

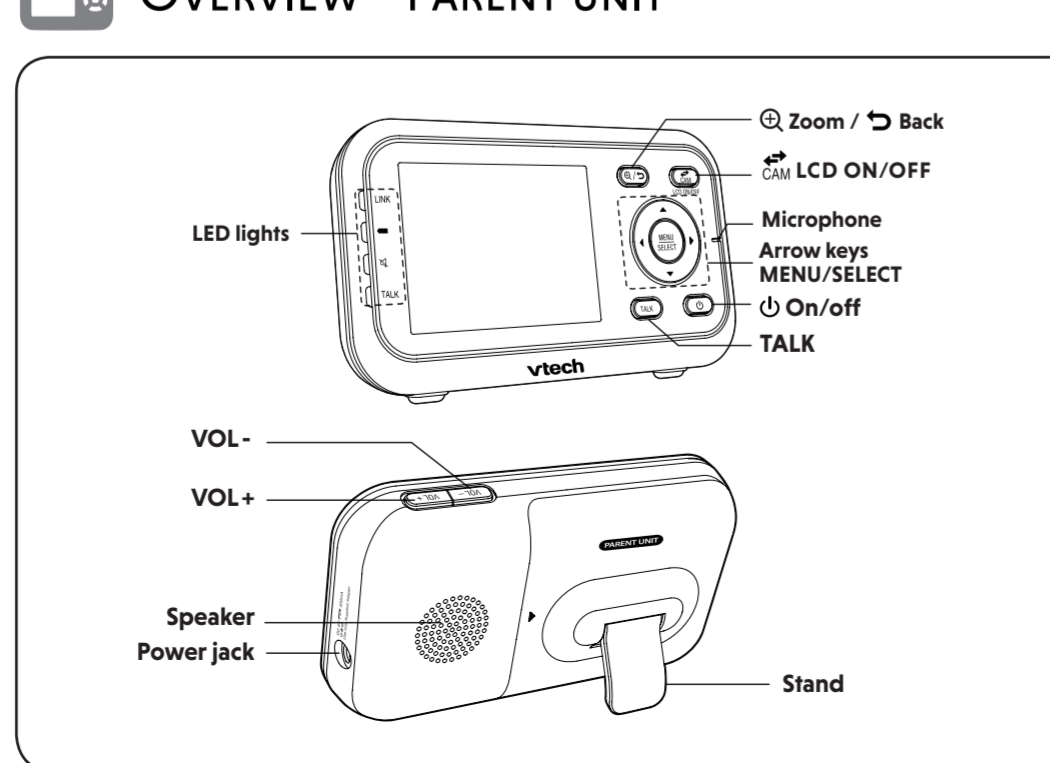


TIP
Press any keys on the parent unit to turn on the screen again.

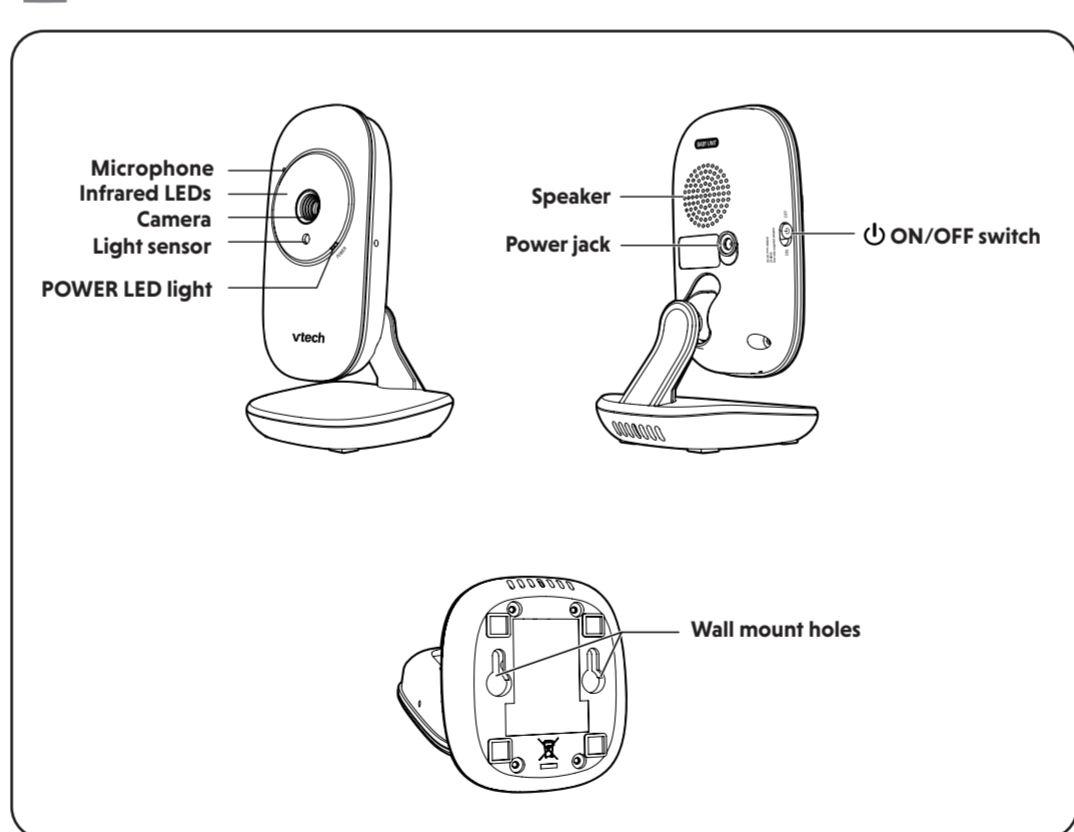
OVERVIEW - PARENT UNIT



OVERVIEW - BABY UNIT



OVERVIEW - PARENT UNIT



NEED HELP?

For operations and guides to help you using your video monitor, and for latest information and supports, go and check the online help topics and online FAQs.

Use your smartphone or mobile device to access our online help.

- Go to <https://help.vtechphones.com/vm3252> or <https://help.vtechphones.com/vm3252-2>; OR
- Scan the QR code on the right. Launch the camera app or QR code scanner app on your smartphone or tablet. Hold the device's camera up to the QR code and frame it. Tap the notification to trigger the redirection of the online help.
- If the QR code is not clearly displayed, adjust your camera's focus by moving your device closer or further away until it is clear.

You can also call our Customer Support at 1 (800) 595-9511 [in US] or 1 (800) 267-7377 [in Canada] for help.



PARENT UNIT ICONS

- Status icons**
- Connection status**
 - Full or Full** displays when strong signal strength is detected between the baby unit and the parent unit.
 - Yi or Yi** displays when moderate or low signal strength is detected between the baby unit and the parent unit.
 - Patrol mode**
 - Displays when the parent unit is in **PATROL** mode.
 - For VM3252-2 only
 - Current view status**
 - Displays the baby unit number of the baby unit that is being viewed.
 - Zoom**
 - Displays when the current image on the parent unit has zoomed in.
 - Night vision**
 - Displays when the baby unit being viewed has activated the night vision feature.
 - Lullaby**
 - Displays when a lullaby is playing.
 - Talkback**
 - Displays when talking back to the baby units from parent unit.
 - 6-level sound indicator**
 - Displays the sound level according to the scales of loudness when there is sound transmitted from the baby unit.
 - II (1 to 2 bars) indicates low sound level detected by the baby unit.
 - IIII (3 to 4 bars) indicates moderate sound level detected by the baby unit.
 - IIIIII (5 to 6 bars) indicates high sound level detected by the baby unit (e.g. baby crying loudly).
 - Mute alert**
 - Displays when the parent unit speaker volume is set to zero.
 - Displays when the parent unit is talking to the baby unit.
 - Real-time temperature**
 - Displays the real-time temperature detected by the baby unit in Fahrenheit (°F) or Celsius (°C) (e.g. 57°F or 14°C).
 - Battery status**
 - animates when the battery is charging.
 - displays solid when the battery is fully charged.
 - displays when the battery is low and needs charging.
 - AC power without battery**
 - Displays when the parent unit is connected to AC power without the battery.
 - Speaker volume**
 - Displays the parent unit speaker volume level while adjusting.

MAIN MENU ICONS

- Brightness**
 - You can change the brightness of the parent unit screen.
- LCD screen off timer**
 - You can set a specific time to screen off your parent unit.
- Temperature**
 - You can choose to set the maximum/minimum temperature and turn on the temperature alert tone so that the parent unit beeps whenever the room temperature detected by the baby unit falls outside of the desired temperature range.
 - You can also choose to display the temperature in Fahrenheit (°F) or Celsius (°C) on your parent unit.
- Sound-activated screen**
 - When the baby unit being viewed detects no sound, the parent unit screen stays off to save power. Once a sound is detected, the parent unit screen turns on automatically. It will then turn off again after 50 seconds of no sound detection.
- VOX sensitivity**
 - With this feature, you can choose to hear sounds from the baby unit all the time, or to hear sounds that exceed a certain level. You can use the parent unit to adjust the microphone sensitivity of your baby unit. The higher the sensitivity level, the more sensitive the baby unit is in detecting sounds for transmitting to the parent unit.
- Lullaby**
 - You can select, play, or stop a lullaby.
- Patrol mode**
 - You can monitor your baby in **PATROL** mode.
 - For VM3252-2 only
- Warning icons and messages**
 - /Battery low at Parent Unit** The battery is empty and needs to be recharged.
 - /Operation in progress** Operation is in progress.
 - /Temperature too high** The temperature detected by the baby unit is higher than the desired temperature alert range.
 - /Temperature too low** The temperature detected by the baby unit is lower than the desired temperature alert range.
 - /No Link to Camera** The parent unit is searching for baby units or the link between the baby unit and the parent unit is lost.
 - /The parent unit is connected to AC power.**