



5" Wi-Fi High Definition Pan & Tilt Monitor

LF925HD
LF925-2HD



Parent Guide

This guide contains important information. Please keep it for future reference.

Visit our website leapfrog.com for more information about products, downloads, resources and more. Read our complete warranty policy online at leapfrog.com/warranty.



Scan the QR code for more online support:



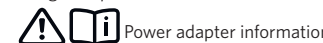
Or go to leapfrog.com/support

Important Safety Instructions

The applied nameplate is located at the bottom of the Baby Unit's base.

When using your equipment, basic safety precautions should always be followed to reduce the risk of fire, electric shock and injury, including the following:

- Follow all warnings and instructions marked on the product.
- Adult setup is required.
- CAUTION:** Do not install the Baby Unit at a height above 6.5 feet (2 meters).
- This product is intended as an aid. It is not a substitute for responsible and proper adult supervision and should not be used as such.
- This product is not intended for use as a medical monitor.
- Do not use this product near water, for example, near to a bath, sink, swimming pool or shower.
- CAUTION:** Use only the battery provided. There may be a risk of explosion if a wrong type of battery is used for the Parent Unit. The battery cannot be subjected to high or low extreme temperature and low air pressure at high altitude during use, storage or transportation. Disposal of battery in fire or a hot oven, mechanically crushing or cutting the battery can result in an explosion. Leaving the battery in an extremely high temperature surrounding environment can result in an explosion or the leakage of flammable liquid of gas. Battery subjected to extremely low air pressure may result in an explosion or the leakage of flammable liquid or gas. Dispose of used battery according to the information in **The RBRC seal**.
- Use only the power adapters included with this product. Incorrect power adapter polarity or voltage can seriously damage the product.



Power adapter information:
Baby Unit Output: 5V DC 1.5A
V-Tech Telecommunications Ltd.
Model: VT07EUS05150
Parent Unit Output: 5V DC 2A
V-Tech Telecommunications Ltd.
Model: VT07EUS05200



- Rechargeable battery information:
Zhuhai Great Power Energy Co., Ltd.; Lithium battery, 3.7V 5000mAh; Model: GSP806090-5Ah-3.7V-ISIP
- The power adapters are intended to be correctly oriented in a vertical or floor mount position. The prongs are not designed to hold the plug in place if it is plugged into a ceiling, under-table or cabinet outlet.
 - For pluggable equipment, the socket-outlet shall be installed near the equipment and shall be easily accessible.
 - Unplug this product from the wall outlet before cleaning. Do not use liquid or aerosol cleaners. Use a damp cloth for cleaning.
 - Do not modify the power adapters or replace with other adapters, as this causes a hazardous situation.
 - Do not allow anything to rest on the power cords. Do not install this product where the cords may be walked on or crimped.
 - This product should be operated only from the type of power source indicated on the marking label. If you are not sure of the type of power supply in your home, consult your dealer or electricity supply provider.
 - Do not overload wall outlets or use an extension cord.
 - Do not place this product on an unstable table, shelf, stand or other unstable surfaces.
 - This product should not be placed in any area where proper ventilation is not provided. Slots and openings in the back or bottom of this product are provided for ventilation. To protect them from overheating, these openings must not be blocked by placing the product on a soft surface such as a bed, sofa or rug. This product should never be placed near or over a radiator or heat source.
 - Never push objects of any kind into this product through the slots because they may touch dangerous voltage points or create a short circuit. Never spill liquid of any kind on the product.

- To reduce the risk of electric shock, do not disassemble this product, but take it to an authorized service facility. Disassembling or removing parts of the product other than via the battery door may expose you to dangerous voltages or other risks. Incorrect reassembling can cause electric shock when the product is subsequently used.
- You should test the sound reception every time you turn on the units or move one of the components.
- Periodically examine all components for damage.
- There is a very low risk of privacy loss when using certain electronic devices, such as baby monitors, cordless telephones, etc. **To protect your privacy, make sure the product has never been used before purchase, reset the baby monitor periodically by powering off and then powering on the units, and power off the baby monitor if you are not intending to use it for some time.**
- The small parts of this monitor can be swallowed by babies or small children. Keep these parts out of reach of children.
- Children should be supervised to ensure that they do not play with the product.
- The product is not intended for use by persons (including children) with reduced physical, sensory or mental capabilities, or lack of experience and knowledge, unless they have been given supervision or instruction concerning use of the appliance by a person responsible for their safety.

SAVE THESE INSTRUCTIONS

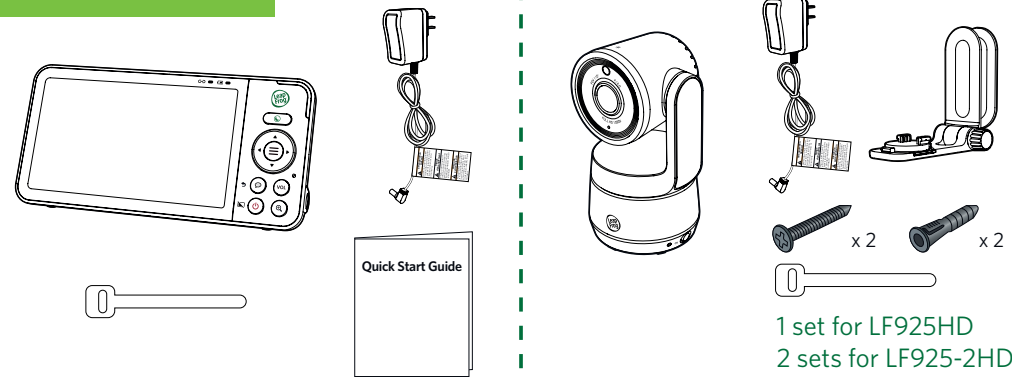
- Caution:**
- Use and store the product at a temperature between 32°F (0°C) and 104°F (40°C).
 - Do not expose the product to extreme cold, heat or direct sunlight. Do not put the product close to a heating source.
 - Batteries should not be exposed to excessive heat such as bright sunshine or fire.
 - Mishandling batteries can cause burn, fire or explosion hazards.
 - Warning—Strangulation Hazard—Children have STRANGLED in cords. Keep this cord out of the reach of children (more than 3 ft (0.9m) away). Do not remove warning label on the adapter cord.**
 - Never place the Baby Unit(s) inside the baby's crib or playpen. Never cover the Baby Unit(s) or Parent Unit with anything such as a towel or a blanket.
 - Other electronic products may cause interference with your baby monitor. Try installing your baby monitor as far away from these electronic devices as possible: wireless routers, radios, cellular telephones, intercoms, room monitors, televisions, personal computers, kitchen appliances and cordless telephones.

Precautions for users of implanted cardiac pacemakers
Cardiac pacemakers (applies only to digital cordless devices): Wireless Technology Research, LLC (WTR), an independent research entity, led a multidisciplinary evaluation of the interference between portable wireless devices and implanted cardiac pacemakers. Supported by the U.S. Food and Drug Administration, WTR recommends to physicians that:

- Pacemaker patients**
- Should keep wireless devices at least six inches from the pacemaker.
 - Should NOT place wireless devices directly over the pacemaker, such as in a breast pocket, when it is turned ON. WTR's evaluation did not identify any risk to bystanders with pacemakers from other persons using wireless devices.

Electromagnetic fields (EMF)
This LeapFrog product complies with all standards regarding electromagnetic fields (EMF). If handled properly and according to the instructions in this user's manual, the product is safe to be used based on scientific evidence available today.

What's Included

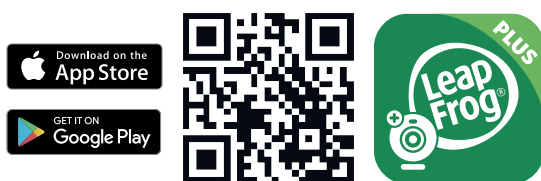


1 set for LF925HD
2 sets for LF925-2HD

Download LeapFrog Baby Care+ App

Start monitoring from anywhere.

Scan the QR code to download the free LeapFrog Baby Care+ mobile app, or search "LeapFrog Baby Care+" on Apple App Store or Google Play Store.

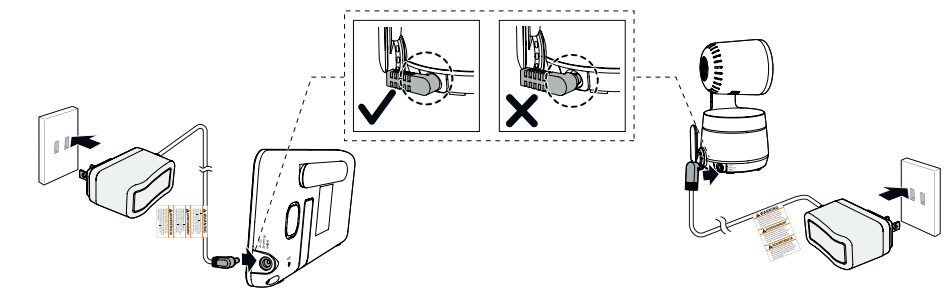


App Compatibility

- Android™ 9.0 or later (Not compatible with mobile devices with a 32-bit Android operating system)
- iOS 14 or later.

Connect, Charge, and Power On the Baby Monitor

1. Connect the Baby Monitor



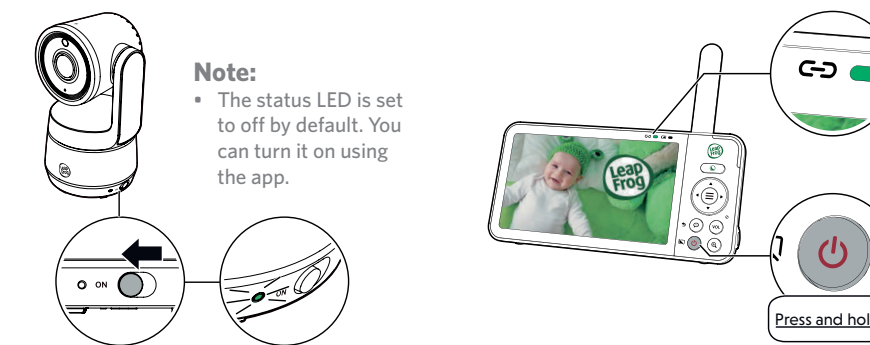
2. Charge the Parent Unit Battery

Notes:

- Before using the baby monitor for the first time, charge the Parent Unit battery for 12 hours. When the Parent Unit battery is fully charged, the battery icon segments become solid.
- The standby time varies depending on your actual usage time and the age of the battery.

3. Power On or Off the Baby Monitor

- Slide the On/Off switch to **ON** to power on your Baby Unit.
- Press and hold until the welcome screen appears.

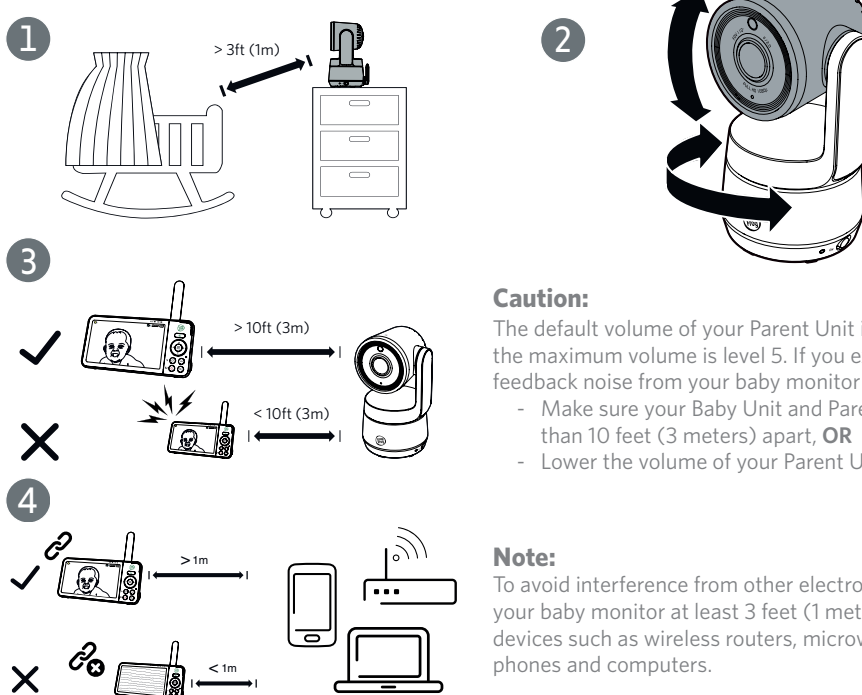


Note:
The status LED is set to off by default. You can turn it on using the app.

4. Status Check

The Parent Unit turns on automatically after connecting to the power socket, and the welcome screen appears. Then, the green LED light flashes and turns on steady when successfully connected.

5. Positioning the Baby Monitor



Caution:

The default volume of your Parent Unit is level 3, and the maximum volume is level 5. If you experience any feedback noise from your baby monitor while positioning:

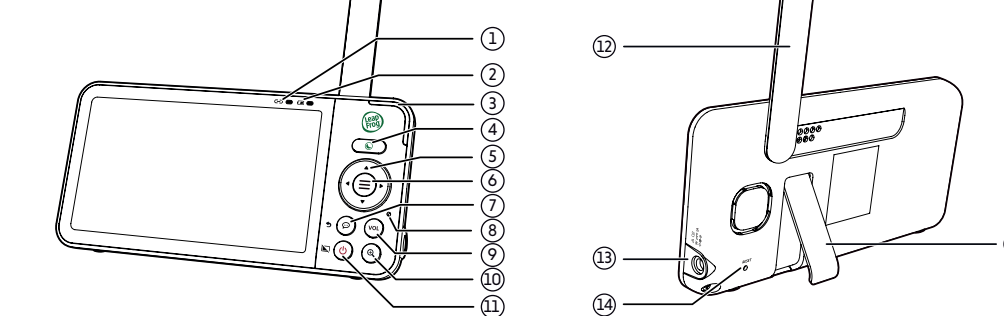
- Make sure your Baby Unit and Parent Unit are more than 10 feet (3 meters) apart, **OR**
- Lower the volume of your Parent Unit.

Note:

To avoid interference from other electronic devices, place your baby monitor at least 3 feet (1 meter) away from devices such as wireless routers, microwave ovens, mobile phones and computers.

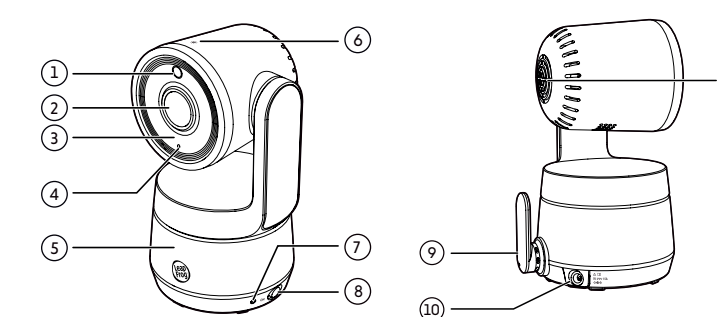
Overview

Parent Unit



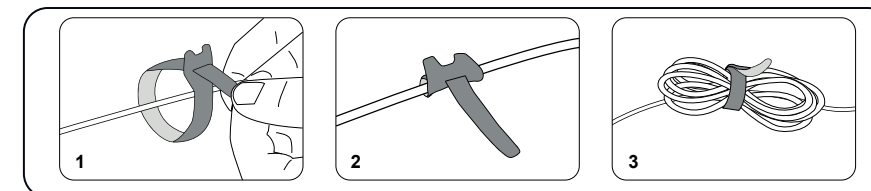
- Link LED light**
 - On when the Parent Unit is linked to the Baby Unit.
 - Flashes when the link to the Baby Unit is lost.
- Battery LED light**
- 3-level sound indicator light**
- Night Mode quick set key**
 - Select black-and-white night vision for extreme darkness or color night vision for dim environments (the use of the Baby Unit night light or other supplementary light sources is required).
 - To activate night light in color night vision, press to turn it on for 30 seconds, and press to adjust its brightness.
- Arrow Keys**
 - to adjust volume.
 - Navigate within the menus.
 - Pan and tilt the camera.
- Menu / Select**
 - Press to enter the main menu.
 - While in a menu, press to confirm a selection, or save a setting.
- Talk / Return**
 - Press and hold to talk to the Baby Unit.
 - While in a sub-menu, press to exit.
- Microphone**
- VOL Volume**
 - Press to view the volume adjustment bar.
- Zoom**
 - Press to zoom in/out to different levels
- Power / LCD Off**
 - Press and hold to turn on/off the power.
 - Press to turn on/off the LCD screen.
- Antenna**
- POWER LED Light**
- On / Off switch**
- Antenna**
- Stand**

Baby Unit



- Light sensor**
- Camera**
- Infrared LEDs**
- Microphone**
- Night light**
 - Single Tap: Turn on/off.
 - Tap and hold (with the light turned on): Adjust night light brightness.
- Night light control key**
 - To enter pairing mode, press and hold the **PAIR** key for three seconds until you hear a beep sound. Then follow the app instructions to connect the camera to a 2.4GHz Wi-Fi network.
- Power jack**
- Speaker**
- Wall mount slots**
- PAIR key**

Cable Management



Parent Unit Icons

Main menu	Sub menu	Options
Monitoring mode (For LF925-2HD only)		
		View Baby Units in Single mode.
		View Baby Units in Patrol mode.
		View Baby Units in Split screen.
Night light		
		On/Off
		Color
		Brightness
		Timer
Lullaby		
		Play/Stop
		Library
		Volume
		Timer

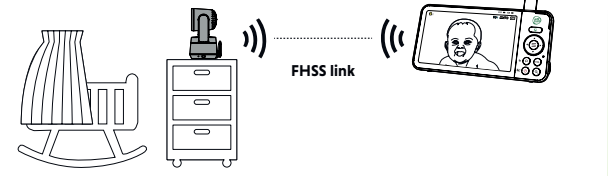
Main menu	Sub menu	Options
General settings		
		Alert settings
		Motion Detect
		Screen Brightness
		Temperature
		Humidity
		Low battery
		Lost link
Help and info		
		Help
		How-to Video
		System Info
		Others

Two Ways to Connect Your Baby Monitor

TIP: To receive product firmware updates, this baby monitor requires connecting to a 2.4GHz home Wi-Fi network.

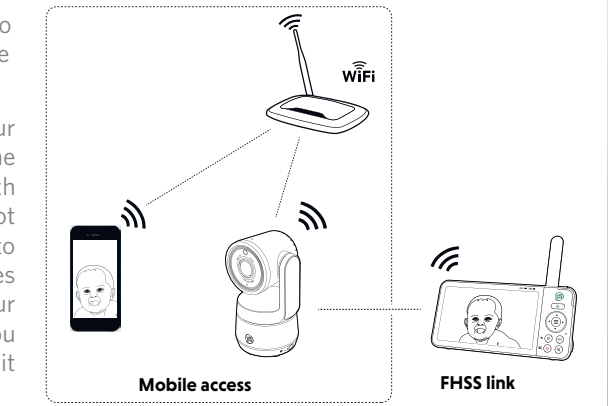
Direct mode

Your baby monitor Parent Unit and Baby Unit connect to each other in **Direct mode** by default, which allows you to immediately stream video out of the box.



Wi-Fi mode

To enhance your experience and enjoy seamless live video streaming via your mobile app, and to receive product software updates (when available), we highly recommend setting up your monitor's Wi-Fi connection.



It uses your 2.4GHz home Wi-Fi network to connect your video monitor. It supports live video streaming through the mobile app.

To stream live video remotely with your mobile device, download and install the **LeapFrog Baby Care+** mobile app. With the mobile app, your Wi-Fi router (not included) provides Internet connectivity to your HD video monitor system. It serves as a communicating channel between your Baby Unit and mobile device, allowing you to monitor and/or control your Baby Unit wherever you are.

Test the Location

If you plan to install your Baby Unit in a designated location, and use your home Wi-Fi network to connect your video monitor, you need to test which of your selected monitoring areas within the house have good Wi-Fi signal strength. After you have powered on your Parent Unit, you can use your Parent Unit's **Wi-Fi signal icon(s)** to assist in checking. Once you have identified the suitable location, you can install your Baby Unit. Adjust the distance between your Baby Unit and the Wi-Fi router if needed.

- TIPS:**
- Surroundings and obstructing factors, such as large metallic objects, filing cabinets, long distances, electrical appliances, and internal walls, may reduce Wi-Fi signal.

Protect Your Privacy and Online Security

LeapFrog cares about your privacy and peace of mind. That's why we've put together a list of industry-recommended best practices to help keep your wireless connection private and your devices protected when online.

Ensure your wireless connection is secure

- Before installing a device, ensure your router's wireless signal is encrypted by selecting the "WPA2-PSK with AES" setting in your router's wireless security menu.

Change default settings

- Change your wireless router's default wireless network name (SSID) to something unique.
- Change default passwords to unique, strong passwords. A strong password:
 - Is at least 10 characters long.
 - Does not contain dictionary words or personal information.
 - Contains a mix of uppercase letters, lowercase letters, special characters and numbers.

- Keep your devices up to date
- Download security patches from manufacturers as soon as they become available. This will ensure you always have the latest security updates.

Parking mode

Designed for extra peace of mind, turn on Parking Mode for a moment of privacy.

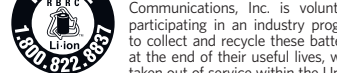
When turned on, Baby Unit will fold into the parking position and disable its camera's audio transmission and video monitoring.

In Parking Mode, motion recording, motion detection, and sound detection will be temporarily unavailable.

Activate Parking Mode:

- Press to enter the main menu.
 - Go to **General Settings**.
 - Press to **Parking Mode**, press to toggle the switch on.
- To deactivate Parking Mode and resume normal operation, press on Parent Unit.

The RBRC seal



The RBRC seal on the Li-ion battery indicates that Vtech Communications, Inc. is voluntarily participating in an industry program to collect and recycle these batteries at the end of their useful lives, when the battery is installed and used such that parts of all persons' body are maintained at a distance of approximately 8 in (20 cm) or more. The transmitter and antenna of the Parent Unit shall be at least 1 in (2.5 cm) from your face.

California Energy Commission battery charging testing mode

This baby monitor meets the California Energy Commission (CEC) regulations for energy consumption. Your Baby monitor is set up to comply with the energy-conserving standards right out of the box. Follow the instructions to install and charge the battery. The CEC battery charging testing mode is activated while it is powered off and charging.

Disclaimer and Limitation of Liability

LeapFrog and its suppliers assume no responsibility for any damage or loss resulting from the use of this handbook. LeapFrog and its suppliers assume no responsibility for any loss or claims by third parties that may arise through the use of this software. LeapFrog and its suppliers assume no responsibility for any damage or loss caused by deletion of data as a result of malfunction, dead battery, or repairs.

THIS DEVICE COMPLIES WITH PART 15 OF THE FCC RULES. OPERATION IS SUBJECT TO THE FOLLOWING TWO CONDITIONS: (1) THIS DEVICE MAY NOT CAUSE HARMFUL INTERFERENCE, AND (2) THIS DEVICE MUST ACCEPT ANY INTERFERENCE RECEIVED, INCLUDING INTERFERENCE THAT MAY CAUSE UNDESIRABLE OPERATION.

Caution: Changes or modifications not expressly approved by the party responsible for compliance could void the user's authority to operate the equipment.

FCC and IC regulations

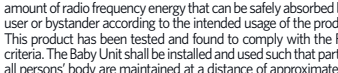
This equipment has been tested and found to comply with the requirements for a Class B digital device under Part 15 of the Federal Communications Commission (FCC) rules. These requirements are intended to provide reasonable protection against harmful interference in a residential installation. This equipment generates, uses and can radiate radio frequency energy and, if not installed and used in accordance with the instructions, may cause harmful interference to radio communications. However, there is no guarantee that interference will not occur in a particular installation. If this equipment does cause harmful interference to radio or television reception, which can be determined by turning the equipment off and on, the user is encouraged to try to correct the interference by one or more of the following measures:

- Reorient or relocate the receiving antenna.
- Increase the separation between the equipment and receiver.
- Connect the equipment into an outlet on a circuit different from that to which the receiver is connected.
- Consult the dealer or an experienced radio/TV technician for help.

WARNING: Changes or modifications to this equipment not supported or approved by the party responsible for compliance could void the user's authority to operate the equipment.

This device complies with Part 15 of the FCC rules. Operation is subject to the following two conditions: (1) This device may not

The RBRC seal



The RBRC seal on the Li-ion battery indicates that Vtech Communications, Inc. is voluntarily participating in an industry program to collect and recycle these batteries at the end of their useful lives, when the battery is installed and used such that parts of all persons' body are maintained at a distance of approximately 8 in (20 cm) or more. The transmitter and antenna of the Parent Unit shall be at least 1 in (2.5 cm) from your face.

California Energy Commission battery charging testing mode

This baby monitor meets the California Energy Commission (CEC) regulations for energy consumption. Your Baby monitor is set up to comply with the energy-conserving standards right out of the box. Follow the instructions to install and charge the battery. The CEC battery charging testing mode is activated while it is powered off and charging.

Disclaimer and Limitation of Liability

LeapFrog and its suppliers assume no responsibility for any damage or loss resulting from the use of this handbook. LeapFrog and its suppliers assume no responsibility for any loss or claims by third parties that may arise through the use of this software. LeapFrog and its suppliers assume no responsibility for any damage or loss caused by deletion of data as a result of malfunction, dead battery, or repairs.

THIS DEVICE COMPLIES WITH PART 15 OF THE FCC RULES. OPERATION IS SUBJECT TO THE FOLLOWING TWO CONDITIONS: (1) THIS DEVICE MAY NOT CAUSE HARMFUL INTERFERENCE, AND (2) THIS DEVICE MUST ACCEPT ANY INTERFERENCE RECEIVED, INCLUDING INTERFERENCE THAT MAY CAUSE UNDESIRABLE OPERATION.

Caution: Changes or modifications not expressly approved by the party responsible for compliance could void the user's authority to operate the equipment.

FCC and IC regulations

This equipment has been tested and found to comply with the requirements for a Class B digital device under Part 15 of the Federal Communications Commission (FCC) rules. These requirements are intended to provide reasonable protection against harmful interference in a residential installation. This equipment generates, uses and can radiate radio frequency energy and, if not installed and used in accordance with the instructions, may cause harmful interference to radio communications. However, there is no guarantee that interference will not occur in a particular installation. If this equipment does cause harmful interference to radio or television reception, which can be determined by turning the equipment off and on, the user is encouraged to try to correct the interference by one or more of the following measures:

- Reorient or relocate the receiving antenna.
- Increase the separation between the equipment and receiver.
- Connect the equipment into an outlet on a circuit different from that to which the receiver is connected.
- Consult the dealer or an experienced radio/TV technician for help.

WARNING: Changes or modifications to this equipment not supported or approved by the party responsible for compliance could void the user's authority to operate the equipment.

This device complies with Part 15 of the FCC rules. Operation is subject to the following two conditions: (1) This device may not

CONSERVEZ CES INSTRUCTIONS

Utilisez et entreposez le produit à une température entre 0 °C (32°F) et 40 °C (104 °F).

- N'exposez pas cet appareil à des froids ou des chaleurs extrêmes, ainsi qu'à la lumière directe du soleil. Ne finalizez pas près d'une source de chaleur.
- Le bloc-piles ne doit pas être exposé à la chaleur excessive telle que la lumière du soleil ou au feu.
- Risque de brûlure, risque d'incendie, risque d'explosion associé à une mauvaise manipulation de ses piles.
- ⚠ Avertissement - Risque de strangulation - Les enfants se sont ÉTRANGLÉS dans des cordons.** Gardez ce cordon hors de portée des enfants (à plus de 0,9 m). Ne laissez pas cette étiquette.
- ⚠ D'autres équipements électroniques peuvent produire des interférences sur votre monitor vidéo et audio.** Tentez d'installer votre monitor vidéo ou audio à l'écart des appareils électroniques tels que des routeurs sans fil, radios, téléphones cellulaires, interphones, moniteurs, téléphones, ordinateurs personnels, stimulateurs cardiaques implantés dans l'organisme.

Les simulateurs cardiaques (ne s'applique qu'aux dispositifs numériques sans fil).

L'organisme Wireless Technology Research, LLC (WTR), une firme de recherche indépendante, a mené une évaluation pluridisciplinaire des interférences entre les téléphones sans fil portatifs et les stimulateurs cardiaques implantés dans l'organisme. Appuyée par l'Administration des aliments et drogues (FDA) des États-Unis, la firme WTR recommande aux médecins:

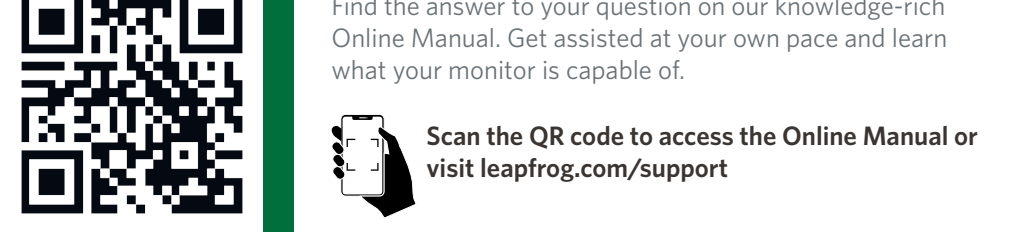
- Aviez aux détenteurs de stimulateurs cardiaques
- Vous devez maintenir les dispositifs sans fil à au moins six pouces du stimulateur cardiaque.
- Is ne doivent PAS placer le téléphone sans fil directement sur le stimulateur cardiaque, tel que dans une poche de chemise, lorsque celui-ci est en marche.

L'étude effectuée par l'organisme WRS n'a pas identifié de risque pour les détenteurs de stimulateurs cardiaques causés par les gens qui utilisent des dispositifs sans fil à proximité de ceux-ci.

Champs électromagnétiques (EMF)
Ce produit de LeapFrog est conforme à toutes les normes se rapportant aux champs électromagnétiques (EMF) standard. Si vous le manipulez correctement en suivant les instructions de ce guide, son utilisation sera sécuritaire pendant de nombreuses années, selon les meilleures évidences scientifiques dont nous disposons aujourd'hui.

Online Manual

Find the answer to your question on our knowledge-rich Online Manual. Get assisted at your own pace and learn what your monitor is capable of.



Scan the QR code to access the Online Manual or visit leapfrog.com/support

- Full Manual**
Comprehensive help articles on product set up, operations, Wi-Fi and settings.
- Video Tutorials**
Walk-throughs on features and installation such as mounting the Baby Unit on the wall.
- FAQs & Troubleshooting**
Answers to the most commonly asked questions, including troubleshooting solutions.

Customer Support

- Visit our Consumer Support website 24 hours a day at: **United States:** leapfrog.com/support **Canada:** leapfrog.ca/support
- Call our Customer Service number from Monday to Friday 9am - 6pm Central Time: **United States & Canada:** 1(800) 717-6031
- Please visit our website at leapfrog.com for full details of the warranty provided in your country.

Technical Specifications

Technology	Wi-Fi 2.4GHz 802.11 b/g/n	Android™ and Google Play™ are trademarks of Google Inc.
Internet Connection	Minimum Requirement: 1.5 Mbps @ 720p or 2.5 Mbps @ 1080p upload bandwidth per Baby Unit	App Store is a trademark of Apple Inc., registered in the U.S. and other countries.
LCD	5" Color LCD (IPS 1280x720 pixels)	iOS is a trademark or registered trademark of Cisco in the U.S. and other countries and is used under license.
Nominal effective range	Maximum power allowed by FCC and IC. Actual operating range may vary according to environmental conditions at the time of use.	
Power requirements	Parent Unit: 3.7V 5000mAh Lithium-ion battery Baby Unit power adapter: Output: 5V DC @ 1.5A Parent Unit power adapter: Output: 5V DC @ 2A	

Specifications are subject to change without notice.
© 2024 LeapFrog Enterprises, Inc. a subsidiary of V Tech Holdings Limited. All rights reserved. 07/24_LF925-XHD_Gen2_US_QSG_V1