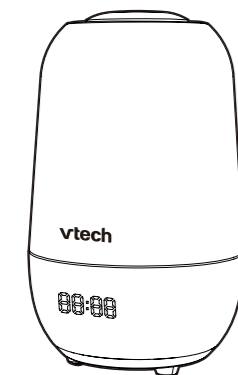


Go to [www.vtechphones.com](http://www.vtechphones.com) to register your product for enhanced warranty support and the latest VTech product news.

BC8313

Baby Sleep Soother



For more support information

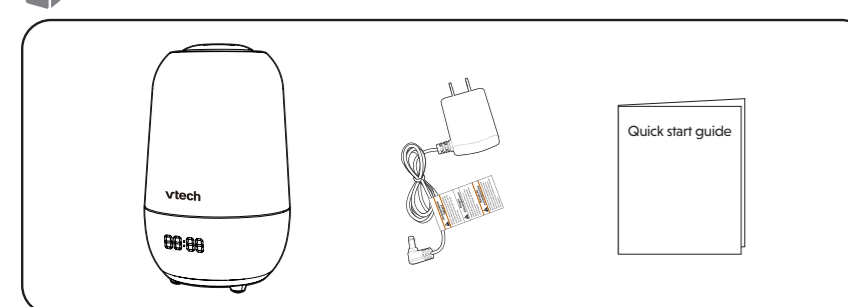


## vttech® Quick Start Guide

### TECHNICAL SPECIFICATIONS

Frequency	2402 - 2480 MHz
Channels	79
Nominal effective range	Maximum power allowed by FCC and IC. Actual operating range may vary according to environmental conditions at the time of use.
Power requirements	Soother power adapter: Input: 100-240V~50/60Hz 0.5A; Output: 5V DC 2A Battery is built in the soother: 3.6V, 2600mAh Li-ion, 9.36Wh Li-ion battery (non-replaceable)

### WHAT'S IN THE BOX



### IMPORTANT SAFETY INSTRUCTIONS

The applied nameplate is located at the bottom of the soother's base.

When using your equipment, basic safety precautions should always be followed to reduce the risk of fire, electric shock and injury, including the following:

- Follow all warnings and instructions marked on the product.
- Adult setup is required.
- This product is not a substitute for adult supervision of the infant. Supervising the infant is the parent's or caregiver's responsibility. This product could cease operating, and therefore you should not assume it will continue working properly for any given period of time. Further, this is not a medical device and should not be used as such.
- Do not use this product near water. For example, do not use it next to a bath tub, wash bowl, kitchen sink, laundry tub or swimming pool, or in a wet basement or shower.

- CAUTION:** Use only the battery provided. There may be a risk of explosion if a wrong type of battery is used for the soother. The battery cannot be subjected to high or low extreme temperature and low air pressure at high altitude during use, storage or transportation. Disposal of battery into fire or a hot oven, or mechanically crushing or cutting or the battery can result in an explosion. Leaving the battery in an extremely high temperature surrounding environment can result in an explosion or the leakage of flammable liquid of gas. Battery subjected to extremely low air pressure may result in an explosion or the leakage of flammable liquid or gas. Dispose of used battery according to the information in the **RBRC seal**.
- Use only the adapters included with this product. Incorrect adapter polarity or voltage can seriously damage the product.

Input: 100-240V~50/60Hz 0.5A Output: 5V DC 2A  
VTech Telecommunications Ltd.  
Model: VT07EU505200

Rechargeable battery information:  
Zhuhai Great Power Energy Co., Ltd.  
Li-ion battery, 3.6V, 2600mAh, 9.36Wh;  
Model: ICR18650-2.6Ah-3.6V-1S1P

- The power adapters are intended to be correctly oriented in a vertical or floor mount position. The prongs are not designed to hold the plug in place if it is plugged into a ceiling, under-the-table or cabinet outlet.
- For pluggable equipment, the socket-outlet shall be installed near the equipment and shall be easily accessible.
- Unplug this product from the wall outlet before cleaning. Do not use liquid or aerosol cleaners. Use a damp cloth for cleaning.
- Do not cut off the power adapters to replace them with other plugs, as this causes a hazardous situation.
- Do not allow anything to rest on the power cords. Do not install this product where the cords may be walked on or crimped.
- This product should be operated only from the type of power source indicated on the marking label. If you are not sure of the type of power supply in your home, consult your dealer or local power company.
- Do not overload wall outlets or use an extension cord.
- Do not place this product on an unstable table, shelf, stand or other unstable surfaces.
- This product should not be placed in any area where proper ventilation is not provided. Slots and openings in the back or bottom of this product are provided for ventilation. To protect them from overheating, these openings must not be blocked by placing the product on a soft surface such as a bed, sofa or rug. This product should never be placed near or over a radiator or heat register.
- Never push objects of any kind into this product

through the slots because they may touch dangerous voltage points or create a short circuit. Never spill liquid of any kind on the product.

- To reduce the risk of electric shock, do not disassemble this product, but take it to an authorized service facility. Opening or removing parts of the product other than specified access doors may expose you to dangerous voltages or other risks. Incorrect reassembling can cause electric shock when the product is subsequently used.
- Periodically examine all components for damage.
- There is a very low risk of privacy loss when using certain electronic devices, such as baby monitors, cordless telephones, etc. To protect your privacy, make sure the product has never been used before purchase, reset the soother periodically by powering off and then powering on the unit, and power off the soother if you will not use it for some time.
- Children should be supervised to ensure that they do not play with the product.
- The product is not intended for use by persons (including children) with reduced physical, sensory or mental capabilities, or lack of experience and knowledge, unless they have been given supervision or instruction concerning use of the appliance by a person responsible for their safety.

#### SAVE THESE INSTRUCTIONS

#### Cautions

- Use and store the product at a temperature between 32°F and 104°F.
- Do not expose the product to extreme cold, heat or direct sunlight. Do not put the product close to a heating source.

- Warning—Strangulation Hazard—Children have STRANGLED in cords.** Keep this cord out of the reach of children (more than 3 ft (0.9m) away). Do not remove this tag.
- Never place the soother inside the baby's crib or playpen. Never cover the soother with anything such as a towel or a blanket.

- Other electronic products may cause interference with your soother. Try installing your soother as far away from these electronic devices as possible: wireless routers, radios, cellular telephones, intercoms, room monitors, televisions, personal computers, kitchen appliances and cordless telephones.
- Do not allow your child or anyone to look directly into the projector lens while it is turned on to avoid possible eye damage.

**Precautions for users of implanted cardiac pacemakers**  
Cardiac pacemakers (applies only to digital cordless devices):  
Wireless Technology Research, LLC (WTR), an independent research entity, led a multidisciplinary evaluation of the interference between portable wireless devices and implanted cardiac pacemakers. Supported by the U.S. Food and Drug Administration, WTR recommends to physicians that:

- Pacemaker patients**
- Should keep wireless devices at least six inches from the pacemaker.
  - Should NOT place wireless devices directly over the pacemaker, such as in a breast pocket, when it is turned ON.

WTR's evaluation did not identify any risk to bystanders with pacemakers from other persons using wireless devices.

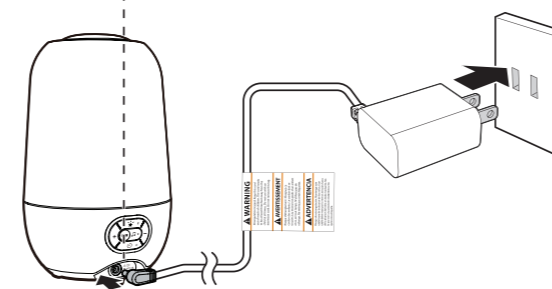
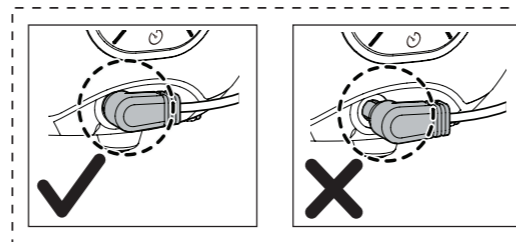
**Electromagnetic fields (EMF)**  
This VTech product complies with all standards regarding electromagnetic fields (EMF). If handled properly and according to the instructions in this user's manual, the product is safe to be used based on scientific evidence available today.

### 1 CONNECT AND POWER ON THE SOOTHER

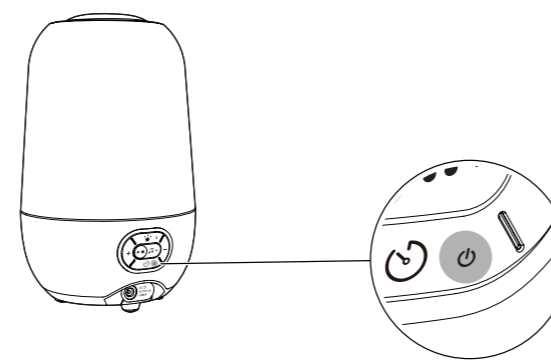
#### NOTES

- The rechargeable battery in the soother is built-in.
- Only use the power adapter supplied with this product.
- Make sure the soother is not connected to the switch controlled electric outlet.
- Connect the power adapter in a vertical or floor mount position only. The adapter prongs are not designed to hold the weight of the soother, so do not connect it to any ceiling, under-the-table, or cabinet outlets. Otherwise, the adapter may not properly connect to the outlet.
- Make sure the soother and the power adapter cord are out of reach of children.

- Connect the power adapter to the soother and a power supply.



- Press the **Power** switch to power on or power off your soother.



### 2 BEFORE USE

#### Positioning the soother

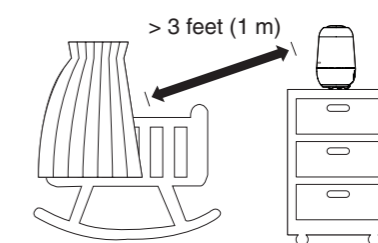
- Place the soother more than 3 feet (1 metre) away from your baby.

#### CAUTION

- Keep the soother out of the reach of your baby. Never place the soother inside the baby's crib or playpen.

#### NOTE

- To avoid interference from other electronic devices, place your soother at least 3 feet (1m) away from devices such as wireless routers, microwaves, cell phones and computers.



### 3 DOWNLOAD THE APP

#### Download MyVTech Soother App for more premium features

Download **MyVTech Soother App** to your mobile device from Apple Store or Google Play store to gain full access of features and conveniently control your soother. Put advanced functions to action, like customizing a routine, with just a few taps of the finger.

With **MyVTech Soother App**, you can pamper your baby.

**TIP**

- Make sure your mobile device meets the minimum requirement for the mobile app.

**NOTE**

The mobile app is compatible with:

- Android™ 6.0 or later; and
- iOS 11.0 or later.

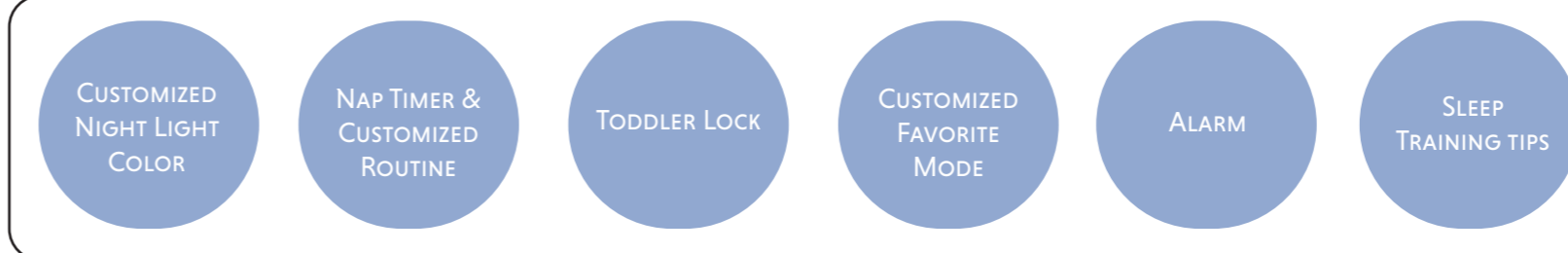
#### NOTE

- Make sure your soother is powered on before pairing.
- Place your mobile phone near the soother for better connection.

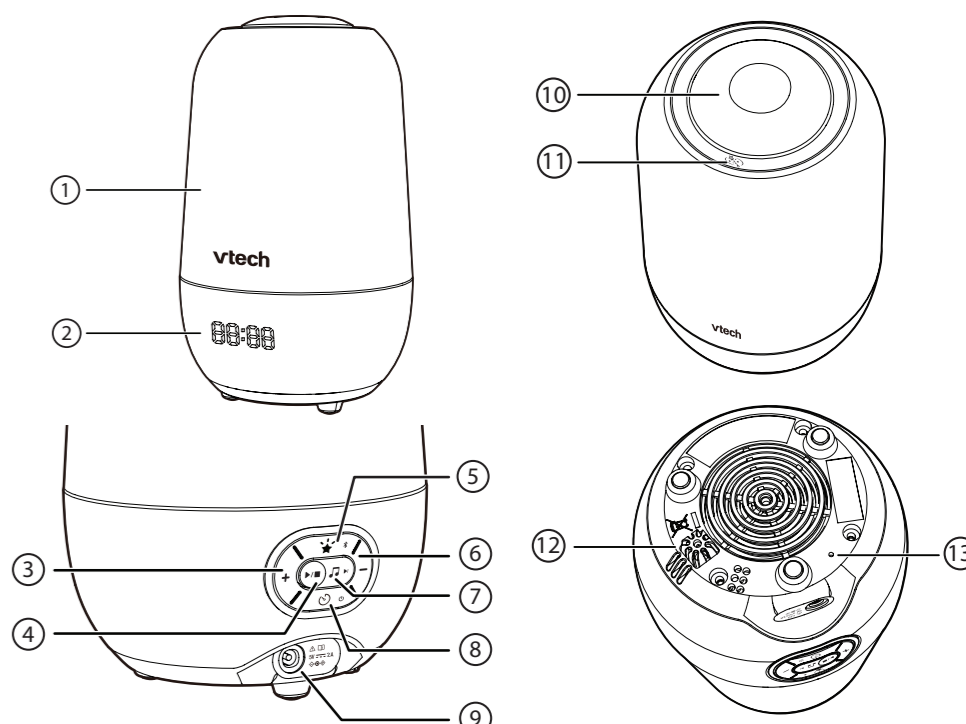
#### NOTE

- Make sure your soother is powered on before pairing.
- Place your mobile phone near the soother for better connection.

### APP FEATURES



### 3 OVERVIEW



- Night light**
- Digital display**
- + VOLUME**
  - Press to increase the soother speaker volume.
- Play/Stop**
  - Press to play the lullaby-like audio and press again to stop playing.
- Film projection On/Off key**
- Bluetooth pairing key**
  - Press and hold for 5 seconds to enter the Bluetooth pairing mode.
- VOLUME**
  - Press to lower the soother speaker volume
- Audio key**
  - Press and hold to change among 4 different modes including soothing sound, lullaby, classical music and storytelling.
  - Skip**
    - Press to skip to the next piece.
- On/Off switch**
  - Press and hold to turn on or turn off the soother.
- Timer**
  - Press to select the time interval options and release to start the countdown.
- Power jack**
- Film projector**
- Magic key**
- Temperature sensor**
- RESET key**

# USE THE SOOTHER

## Film Projection

The projection light is located on the top of the soother and offers you 6 types of projection film to choose from for your little baby. The selected pattern will be projected onto the ceiling at a tilted angle.

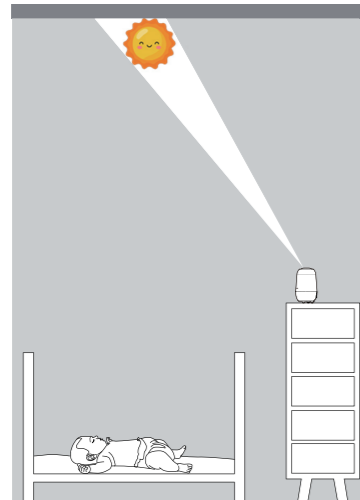
### Turn on or turn off the projection

- Press the **Film projection On/Off key** to turn on or turn off the projection.

### Adjust the projection angle

- Tilt the projection light lens manually to try out different angles then pick the one which suits your baby the best.

- Adjust your soother's position with the projection light to help soothe your baby to sleep. For optimal performance, place the soother in an upright position.



## Night Light & Favorite Mode

With the night light, the soother can illuminate a soft hue to calm your baby in a dark room. You can control the brightness level of its glow directly on the soother and adjust the night light color remotely in **MyVTech Soother App**.

Several functions can be performed using **Magic key** located on the top of the soother.

### Start or stop the soother

- When inactive, tap **Magic key** to start and resume the Soother to its previous settings.

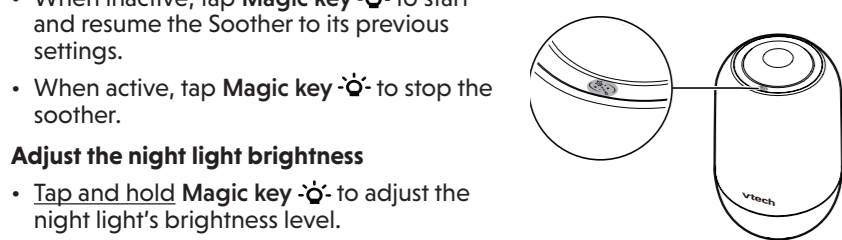
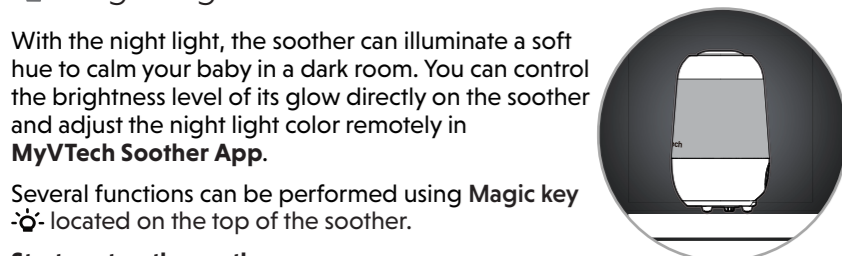
- When active, tap **Magic key** to stop the soother.

### Adjust the night light brightness

- Tap and hold **Magic key** to adjust the night light's brightness level.

### Change your favorite mode

- Tap **Magic key** twice to go to the next favorite mode.



## Audio Player

An array of lullaby-like audio content comes in handy, including stories, classical music, soothing sound as well as lullabies. All audio contents are pre-stored in the soother.

### Play or stop the audio

- Press to play sounds, music or stories and press again to stop playing.

### Change the audio mode

- Press and hold to change among 4 different modes following below sequence.

- Soothing sound
- Lullaby
- Classical music
- Storytelling

### Skip an audio

- Press to skip the current song and play the next one.

### Adjust the volume

- Press or to increase or decrease the volume.

### CAUTION

- Beware of the speaker volume. For ear protection, the maximum volume is set to **Level 8** by default (**Level 1** - the lowest to **Level 10** - the highest). If you want to set the volume level higher than **Level 8**, you can adjust it in **MyVTech Soother App**.

### NOTES

When an audio is playing, two letters before the colon will be shown on the digital display. It represents which audio mode you are in and which track you are playing at the moment.

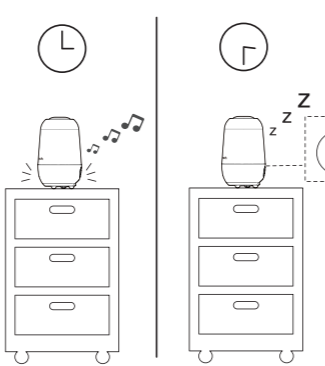
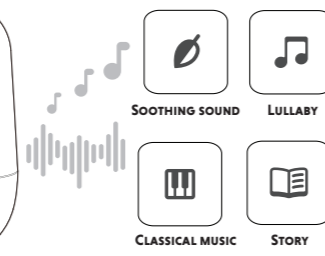
- stands for Lullaby mode.
- stands for Classical music mode.
- stands for Storytelling mode.
- stands for Soothing sound mode.

## Auto-off Timer

While the soother is playing story, lullaby, classical music or soothing sound, the auto-off timer feature helps you automatically stop the projection, light and sound after playing for 30/60/120/180 or 240 minutes.

### Set auto-off timer

- Toggle to select timer options **OFF, 30 minutes, 60 minutes, 120 minutes, 180 minutes** or **240 minutes**.
- Stop pressing to start the countdown.
- Toggle back to **OFF** to stop countdown.



## Temperature and Time

Once the soother is turned on, it detects the room temperature automatically. The measurement is showed on the digital display alternately with the clock. The time of the clock will be in sync with your mobile device after pairing.

### TIP

Making adjustment to the following items is available in **MyVTech Soother App**.

- Temperature format
- 12-hour or 24-hour time format
- Temperature and time rotation interval

## Audio streaming from your mobile device

The soother is able to function as a Bluetooth speaker after pairing with a mobile device via Bluetooth so you can play your own music from your mobile device through the soother.

### Connect your device with the soother via Bluetooth audio

To use a Bluetooth enabled mobile device with your soother, you must first pair and connect your Bluetooth mobile device with the soother. Before you begin, make sure that your Bluetooth enabled mobile device is not connected to any other Bluetooth device.

### On the soother

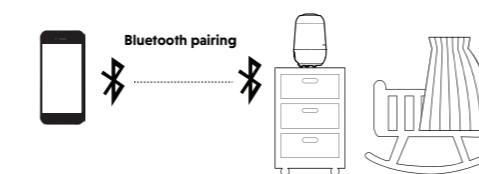
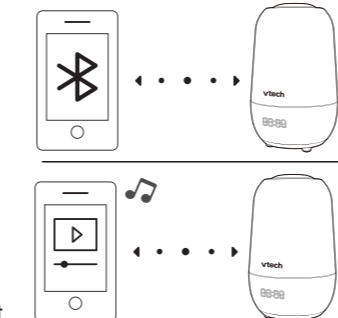
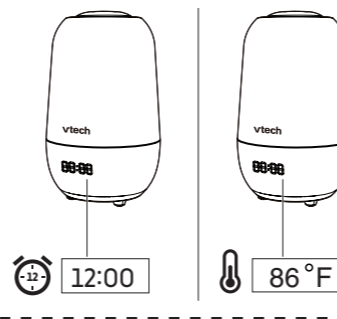
- Press and hold the Bluetooth pairing key for 5 seconds to enter Bluetooth pairing mode.

### On your device

- Set your mobile device to discoverable mode before pairing.
- Place your mobile device next to the soother during the whole pairing process.
- Select "VTech Soother" under the device list.

### NOTE

- After the soother enters the Bluetooth pairing mode, the word **BLUE** will be keep blinking on the digital display.



# NEED HELP?

- For more guides to help you operate your soother, check out the latest online help topics and FAQs by going to <https://vtech.zendesk.com/hc/en-us>
- Alternatively, you can scan the QR code on the right.
- You can also call our Customer Support at 1 (800) 595-9511 [in US] or 1 (800) 267-7377 [in Canada] for help.



## THE RBRC SEAL



The RBRC seal on the Li-ion battery indicates that VTech Communications, Inc. is voluntarily participating in an industry program to collect and recycle these batteries at the end of their useful lives, when taken out of service within the United States and Canada. The program provides a convenient alternative to placing used Li-ion batteries into the trash or municipal waste, which may be illegal in your area.

VTech's participation makes it easy for you to drop off the spent battery at local retailers participating in the program or at authorized VTech product service centers. Please call **1 (800) 8 BATTERY** for information on Li-ion battery recycling and disposal bans/restrictions in your area. VTech's involvement in this program is part of its commitment to protecting our environment and conserving natural resources.

The **RBRC Seal and 1 (800) 8 BATTERY®** are registered trademarks of Call2Recycle, Inc.

## FCC AND IC REGULATIONS

### FCC Part 15

This equipment has been tested and found to comply with the requirements for a Class B digital device under Part 15 of the Federal Communications Commission (FCC) rules. These requirements are intended to provide reasonable protection against harmful interference in a residential installation. This equipment generates, uses and can radiate radio frequency energy and, if not installed and used in accordance with the instructions, may cause harmful interference to radio communications. However, there is no guarantee that interference will not occur in a particular installation. If this equipment does cause harmful interference to radio or television reception, which can be determined by turning the equipment off and on, the user is encouraged to try to correct the interference by one or more of the following measures:

- Reorient or relocate the receiving antenna.
- Increase the separation between the equipment and receiver.
- Connect the equipment into an outlet on a circuit different from that to which the receiver is connected.
- Consult the dealer or an experienced radio/TV technician for help.

**WARNING:** Changes or modifications to this equipment not expressly approved by the party responsible for compliance could void the user's authority to operate the equipment.

This device complies with Part 15 of the FCC rules. Operation is subject to the following two conditions: (1) this device may not cause harmful interference, and (2) this device must accept any interference received, including interference that may cause undesired operation.

To ensure safety of users, the FCC has established criteria for the amount of radio frequency energy that can be

safely absorbed by a user or bystander according to the intended usage of the product. This product has been tested and found to comply with the FCC criteria. The soother shall be installed and used such that parts of all persons' body are maintained at a distance of approximately 8 in (20 cm) or more. The transmitter of the soother shall be held at least 1 in (2.5 cm) from your face. This Class B digital apparatus complies with Canadian requirement: CAN ICES-3 (B)/NMB-3(B)

### Industry Canada

This device contains licence-exempt transmitter(s)/ receiver(s) that comply with Innovation, Science and Economic Development Canada's licence-exempt RSS(s). Operation is subject to the following two conditions: (1) This device may not cause interference. (2) This device must accept any interference, including interference that may cause undesired operation of the device. The term "IC," before the certification/registration number only signifies that the Industry Canada technical specifications were met. This product meets the applicable Innovation, Science and Economic Development Canada technical specifications.

### RF radiation exposure statement

The soother complies with FCC RF radiation exposure limits set forth for an uncontrolled environment. The soother should be installed and operated with a minimum distance of 8 in (20 cm) between the soother and all persons' body. Use of other accessories may not ensure compliance with FCC RF exposure guidelines. This equipment complies also with Industry Canada RSS-102 with respect to Canada's Health Code 6 for Exposure of Humans to RF Fields.

## CALIFORNIA ENERGY COMMISSION BATTERY CHARGING TESTING MODE

This soother meets the California Energy Commission (CEC) regulations for energy consumption. Your soother is set up to comply with the energy-conserving standards right out of the box. Follow the

instructions to charge the battery. The CEC battery charging testing mode is activated while charging. The CEC battery charging testing mode is activated while it is powered off and charging.

# FOR CETL COMPLIANCE ONLY

La plaque signalétique appliquée est située au bas de la base de le dispositif apaisant.

**bébé Mesures de sécurité importantes**  
La plaque signalétique appliquée est située au bas du socle de l'unité du bébé. Lorsque vous utilisez votre appareil, vous devriez toujours suivre certaines mesures de précaution de base afin de réduire les risques d'incendie, d'électrocution et de blessures corporelles, dont ceux qui suivent :

- Observez toutes les instructions et mises en garde inscrites sur l'appareil.
- L'installation par un adulte est requise.
- Ce produit ne remplace pas la surveillance adulte du nourrisson. La supervision du nourrisson est la responsabilité du parent ou de la personne qui s'occupe de l'enfant. Ce produit pourrait cesser de fonctionner et, par conséquent, vous ne devriez pas présumer qu'il continuera de fonctionner correctement pendant une période de temps donnée. De plus, il ne s'agit pas d'un instrument médical et ne devrait pas être utilisé comme tel. N'utilisez pas cet appareil près de l'eau ni de toute autre source d'humidité, par exemple, près d'une baignoire, cuve à lessive, évier de cuisine, dans un sous-sol humide ni près d'une piscine, dans un sous-sol humide ou une douche.
- MISE EN GARDE:** Utilisez uniquement les piles fournies. Il existe un risque d'explosion si un autre type de batterie est utilisé pour l'unité Parents. N'incendiez pas les piles. Celles-ci risqueraient d'exploser. Jetez les piles usées selon les renseignements suivant le sceau du RBRC.

N'utilisez que les adaptateurs inclus avec ce produit. L'utilisation d'un adaptateur dont la polarité ou la tension serait inadéquate risque d'endommager sérieusement le produit et mettre votre sécurité en péril.

- Informations sur les adaptateurs électriques :  
Sortie : 5V DC 2A  
VTech Telecommunications Ltd.  
Modèle : VT07EUS05200
- Informations sur les piles rechargeables :  
Zhuohai Great Power Energy Co., Ltd.  
Li-ion battery, 3.6V, 2600mAh, 9.36Wh;  
Modèle: ICRI8650-2.6Ah-3.6V-151P

- Lorsqu'ils sont branchés dans une prise de courant, les adaptateurs secteur ont été conçus pour être orientés correctement, soit à la verticale ou au plancher. Les broches n'ont pas été conçues pour supporter le poids du bloc d'alimentation et le maintenir en place si celui-ci est branché dans une prise au plafond, sous une table ou dans un meuble.
- Pour les PRODUITS À BRANCHER À UNE PRISE DE COURANT, la prise de courant doit être installée près du produit, afin d'assurer une accessibilité sécuritaire à la prise de courant. Débranchez ce produit de la prise de courant avant de procéder au nettoyage. N'utilisez pas de nettoyeurs en aérosols. Utilisez un chiffon humide pour le nettoyer.
- Ne coupez pas les cordons d'alimentation pour remplacer les fiches, car ceci peut présenter un danger potentiel. Ne laissez aucun objet reposer ni appuyer sur le cordon d'alimentation. N'installez pas cet appareil dans un endroit où l'on risque d'écraser le cordon d'alimentation ou de le piétiner. Ne faites fonctionner cet appareil qu'avec le type d'alimentation indiqué sur l'étiquette. Si vous ne connaissez pas le type d'alimentation que vous possédez à votre domicile, consultez votre marchand ou votre compagnie locale d'électricité.
- Ne surchargez pas les prises de courant murales ni les rallonges électriques.
- Ne placez pas cet appareil sur un chariot, meuble, trépid, support de montage ni autre objet instable.
- Les trous et ouvertures du boîtier, situés à l'arrière de l'appareil ou sous celui-ci, servent à aérer l'appareil. Pour l'empêcher de surchauffer, ne bloquez sous aucun prétexte ces ouvertures et n'empêchez pas l'aération adéquate de l'appareil en le plaçant sur un lit, divan, tapis ou toute autre surface similaire. De même, ne le positionnez pas à proximité ni au-dessus d'une source de chaleur ou d'un calorifère. De plus, ne placez pas l'appareil dans un endroit avant de vous assurer qu'il y ait une bonne circulation d'air.
- N'enfoncez jamais d'objets à travers les ouvertures de cet appar-

eil, car ils pourraient entrer en contact avec des points de tension dangereux ou causer des courts-circuits qui peuvent dégénérer en incendies ou en risques d'électrocution. Ne renversez jamais de liquide dans ce produit.

- Afin de réduire les risques d'électrocution, ne démontez pas cet appareil, mais apportez-le dans un centre de service autorisé. L'ouverture du boîtier ou le retrait de toutes pièces que contient cet appareil, à l'exception de l'accès autorisé à certaines portes ou ouvertures, risque de vous exposer à des points de tension dangereux ou d'autres dangers. Un remontage incorrect peut par la suite présenter des risques d'électrocution.
- Examinez les composantes afin de vérifier si celles-ci ne sont pas endommagées.
- Il existe un très faible risque de perte de confidentialité avec certains appareils électroniques (autres écouteurs-bébé, téléphones sans fils etc.). Pour l'éviter, s'assurer que le produit n'a jamais été utilisé avant l'achat, réinitialiser l'unité de façon périodique, éteindre l'écoute-bébé quand il n'est pas en cours d'utilisation. Les enfants devraient être supervisés afin de vous assurer qu'ils ne jouent pas avec l'appareil.
- Le produit n'est pas conçu pour être utilisé par des personnes (incluant des enfants) aux capacités physiques, sensorielles ou mentales réduites ou qui manquent d'expérience et de connaissances, à moins qu'on leur ait donné suffisamment de supervision ou d'instructions relativement à l'utilisation de l'appareil par une personne responsable de leur sécurité.

### CONSERVEZ CES INSTRUCTIONS

#### Mises en garde

- Utilisez et entreposez le produit à une température entre 0° C (32° F) et 40° C (104° F).
- N'exposez pas cet appareil à des froids ou des chaleurs extrêmes, ainsi qu'à la lumière directe du soleil. Ne l'installez pas près d'une source de chauffage.
- Le bloc-piles ne doit pas être exposé à la chaleur excessive telle que la lumière du soleil ou au feu.
- ⚠ Avertissement - Risque de strangulation - Les enfants se sont ÉTRANGLÉS dans des cordons.** Gardez ce cordon hors de portée des enfants (à plus de 0,9 m). N'enlevez pas cette étiquette.
- Ne jamais placer le moniteur à l'intérieur du berceau ou du parc de bébé. Ne jamais couvrir le moniteur ou l'unité (s) portative avec un article tel une serviette ou une couverture.
- D'autres équipements électroniques peuvent produire des interférences sur votre unité. Tentez d'installer votre moniteur vidéo ou audio à l'écart des appareils électroniques tels que des routeurs sans fil, radios, téléphones cellulaires, interphones, moniteurs, téléphones, ordinateurs personnels, électroménagers et téléphones sans fil.

#### Stimulateurs cardiaques implantés dans l'organisme

Les simulateurs cardiaques (ne s'applique qu'aux dispositifs numériques sans fil).  
L'organisme "Wireless Technology Research, LLC (WTR), une firme de recherche indépendante, a mené une évaluation pluridisciplinaire des interférences entre les téléphones sans fil portatifs et les stimulateurs cardiaques implantés dans l'organisme. Appuyée par l'Administration des aliments et drogues (FDA) des États-Unis, la firme WTR recommande aux médecins:

- Avs aux détenteurs de stimulateurs cardiaques**
- Vous devriez maintenir les dispositifs sans fil à au moins six pouces du simulateur cardiaque.
- Ils ne doivent PAS placer le téléphone sans fil directement sur le stimulateur cardiaque, tel que dans une poche de chemise, lorsque celui-ci est en marche.

L'étude effectuée par l'organisme WRS n'a pas identifié de risque pour les détenteurs de stimulateurs cardiaques causés par les gens qui utilisent des dispositifs sans fil à proximité de ceux-ci.

#### Champs électromagnétiques (EMF)

Ce produit de VTech est conforme à toutes les normes se rapportant aux champs électromagnétiques (EMF) standard. Si vous le manipulez correctement en suivant les instructions de ce guide, son utilisation sera sécuritaire pendant de nombreuses années, selon les meilleures évidences scientifiques dont nous disposons aujourd'hui.

material and workmanship, pursuant to the following terms and conditions, when installed and used normally and in accordance with the Product operating instructions. This limited warranty extends only to the Consumer for Products purchased and used in the United States of America and Canada.

**What will VTech do if the Product is not free from defects in materials and workmanship during the limited warranty period ("Materially Defective Product")?**

During the limited warranty period, VTech's authorized service representative will replace at VTech's option, without charge, a Materially Defective Product. If we choose to replace the Product, we may replace it with a new or refurbished Product of the same or similar design. We will retain defective parts, modules, or equipment. Replacement of the Product, at VTech's option, is your exclusive remedy. VTech will return the replacement Products to you in working condition. You should expect the replacement to take approximately 30 days.

#### How long is the limited warranty period?

The limited warranty period for the Product extends for ONE (1) YEAR from the date of purchase (90 days on Products purchased as Refurbished"). This limited warranty also applies to the replacement Product for a period of either (a) 90 days from the date the replacement Product is shipped to you or (b) the time remaining on the original one-year warranty (90-day limited warranty on products that are purchased as Refurbished"); whichever is longer.

\*Refurbished products purchased from our online store carry a 90-day replacement warranty.

#### What is not covered by this limited warranty?

This limited warranty does not cover:

- Product that has been subjected to misuse, accident, shipping or other physical damage, improper installation, abnormal operation or handling, neglect, inundation, fire, water or other liquid intrusion; or
- Product that has been damaged due to repair, alteration or modification by anyone other than an authorized service representative of VTech; or
- Product to the extent that the problem experienced is caused by signal conditions, network reliability, or cable or antenna systems; or
- Product to the extent that the problem is caused by use with non-VTech accessories; or
- Product whose warranty/quality stickers, product serial number plates or electronic serial numbers have been removed, altered or rendered illegible; or
- Product purchased, used, serviced, or shipped for repair from outside the United States of America or Canada, or used for commercial or institutional purposes (including but not limited to Products used for rental purposes); or
- Product returned without a valid proof of purchase (see item 2 below); or
- Charges for installation or set up, adjustment of customer controls, and installation or repair of systems outside the unit.

#### How do you get warranty service?

To obtain warranty service in the USA, please visit our

website at [www.vtechphones.com](http://www.vtechphones.com) or call 1 (800) 595-9511. In Canada, go to [www.vtechcanada.com](http://www.vtechcanada.com) or call 1 (800) 267-7377.

NOTE: Before calling for service, please review the user's manual - a check of the Product's controls and features may save you a service call.

Except as provided by applicable law, you assume the risk of loss or damage during transit and transportation and are responsible for delivery or handling charges incurred in the transport of the Product(s) to the service location. VTech will return replaced Product under this limited warranty. Transportation, delivery or handling charges are prepaid. VTech assumes no risk for damage or loss of the Product in transit.

#### What must you return with the Product to get warranty service?

- Return the entire original package and contents including the Product to the VTech service location along with a description of the malfunction or difficulty; and
- Include a "valid proof of purchase" (sales receipt) identifying the Product purchased (Product model) and the date of purchase or receipt; and
- Provide your name, complete and correct mailing address, and telephone number.

#### Other limitations

This warranty is the complete and exclusive agreement between you and VTech. It supersedes all other written or oral communications related to this Product. VTech provides no other warranties for this Product. The warranty exclusively describes all of VTech's responsibilities regarding the Product. There are no other express warranties. No one is authorized to make modifications to this limited warranty and you should not rely on any such modification. State/Provincial Law Rights: This warranty gives you specific legal rights, and you may also have other rights, which vary from state to state or province to province.

Limitations: Implied warranties, including those of fitness for a particular purpose and merchantability (an unwritten warranty that the Product is fit for ordinary use) are limited to one year from the date of purchase. Some states/provinces do not allow limitations on how long an implied warranty lasts, so the above limitation may not apply to you. In no event shall VTech be liable for any indirect, special, incidental, consequential, or similar damages (including, but not limited to lost profits or revenue, including to use the Product or other associated equipment, the cost of substitute equipment, and claims by third parties) resulting from the use of this Product. Some states/provinces do not allow the exclusion or limitation of incidental or consequential damages, so the above limitation or exclusion may not apply to you.

#### Please retain your original sales receipt as proof of purchase.

# DISCLAIMER AND LIMITATION OF LIABILITY

VTech Communications, Inc. and its suppliers assume no responsibility for any damage or loss resulting from the use of this user's manual. VTech Communications, Inc. and its suppliers assume no responsibility for any loss or claims by third parties that may arise through the use of this product.

Company: VTech Communications, Inc.  
Address: 9020 SW Washington Square Road - Ste 555  
Tigard, OR 97223, United States  
Phone: 1 (800) 595-9511 in the U.S. or 1 (800) 267-7377 in Canada



Specifications are subject to change without notice.  
© 2021 VTech Telecommunications Ltd.  
All rights reserved. 09/21. BC8313\_QSG\_V1