

Go to [auphones.vtech.com](#) to register your product for enhanced warranty support and the latest Vtech product news.

RM7756HD
RM7756-2HD

7" Smart HD Video Monitor
With Remote Access



For more support information

vtech
Quick start guide



Congratulations

on purchasing your new Vtech product.
Before using this baby monitor, please read the **Important safety instructions**.

What does this HD Video Monitor do?

Vtech 7" Smart HD Video Monitor With Remote Access allows you to stay close to your baby when you are on the move or away.
This monitor uses two connection methods to enhance your live video and audio streaming experience: a secure FHSS link for direct connection with the parent unit, and secure Wi-Fi for easy app monitoring on your mobile or tablet. Stay effortlessly connected to your baby at all times with these optimised connections.
Vtech 7" Smart HD Video Monitor With Remote Access uses **MyVtech Baby Plus** app to let you instantly see and hear what's happening with your baby from anywhere in the world. Download the app at the App Store or the Google Play™ Store, directly from your smartphone or mobile tablet.
The full HD (1080p) resolution is visible in the app only.

IMPORTANT SAFETY INSTRUCTIONS

The applied nameplate is located at the bottom of the baby unit's base.
When using your equipment, basic safety precautions should always be followed to reduce the risk of fire, electric shock and injury, including the following:
1. Follow all warnings and instructions marked on the product.
2. Adult setup is required.
3. **CAUTION:** Do not install the baby unit at a height above 6.5 feet (2 metres).
4. This product is intended as an aid. It is not a substitute for responsible and proper adult supervision and should not be used as such.
5. This product is not intended for use as a medical monitor.
6. Do not use this product near water, for example, near to a bath, sink, swimming pool or shower.
7. **CAUTION:** Use only the battery provided (if applicable). There may be a risk of explosion if a wrong type of battery is used for the parent unit. The battery cannot be subjected to high or low extreme temperature and low air pressure at high altitude during use, storage or transportation. Disposal of battery in fire or a hot oven, mechanically crushing or cutting the battery can result in an explosion. Leaving the battery in an extremely high temperature surrounding environment can result in an explosion or the leakage of flammable liquid or gas. Battery subjected to extremely low air pressure may result in an explosion or the leakage of flammable liquid or gas. Dispose of used battery according to the instructions.
8. **CAUTION:** Use only the power adaptors included with this product. Incorrect power adaptor polarity or voltage can seriously damage the product.

Power adaptor information:
Baby Unit Output: 5V DC 1000mA
Vtech Telecommunications Ltd.
Model: VT05EUS0510D
Parent Unit Output: 5V DC 2A
Vtech Telecommunications Ltd.
Model: VT07EUS05200

Rechargeable battery information:
3.7V 5000mAh, 18.5Wh Lithium-ion battery
Zhejiang Great Power Energy Co., Ltd.
Model: GSP80609D-SAH-3.7V-151P

The power adaptor is intended to be correctly oriented in a vertical or floor mount position. The prongs are not designed to hold the plug in place if it is plugged into a ceiling, under-the-table or cabinet outlet.

For pluggable equipment, the socket-outlet (power adaptor) should be installed near the equipment and should be easily accessible.

Unplug this product from the wall outlet before cleaning. Do not use liquid or aerosol cleaners. Use a damp cloth for cleaning.

Do not modify the power adaptors or replace with other adaptors, as this causes a hazardous situation.

Do not allow anything to rest on the power cords. Do not install this product where the cords may be walked on or crimped.

This product should be operated only from the type of power source indicated on the marking label. If you are not sure of the type of power supply in your home, consult your dealer or electricity supply provider.

Do not overload wall outlets or use an extension cord.

Do not place this product on an unstable table, shelf, stand or other unstable surfaces.

This product should not be placed in any area where proper ventilation is not provided. Slots and openings in the back or bottom of this product are provided for ventilation. To protect them from overheating, these openings must not be blocked by placing the product on a soft surface such as a bed, sofa or rug. This product should never be placed near or over a radiator or heat source.

Never push objects of any kind into this product through the slots because they may touch dangerous voltage points or create a

short circuit. Never spill liquid of any kind on the product.
To reduce the risk of electric shock, do not disassemble this product, but take it to an authorized service facility. Disassembling or removing parts of the product other than via the battery door (if applicable) may expose you to dangerous voltages or other risks. Incorrect reassembly can cause electric shock when the product is subsequently used.
You should test the sound reception every time you turn on the units or move one of the components.
Periodically examine all components for damage.
There is a very low risk of privacy loss when using certain electronic devices, such as baby monitors, cordless telephones, etc. To protect your privacy, make sure the product has never been used before purchase, reset the baby monitor periodically by powering off and then powering on the units, and power off the baby monitor if you are not intending to use it for some time.
Children should be supervised to ensure that they do not play with the product.
The small parts of this monitor can be swallowed by babies or small children. Keep these parts out of reach of children.
The product is not intended for use by persons (including children) with reduced physical, sensory or mental capabilities, or lack of experience and knowledge, unless they have been given supervision or instruction concerning use of the appliance by a person responsible for their safety.

SAVE THESE INSTRUCTIONS

Caution:

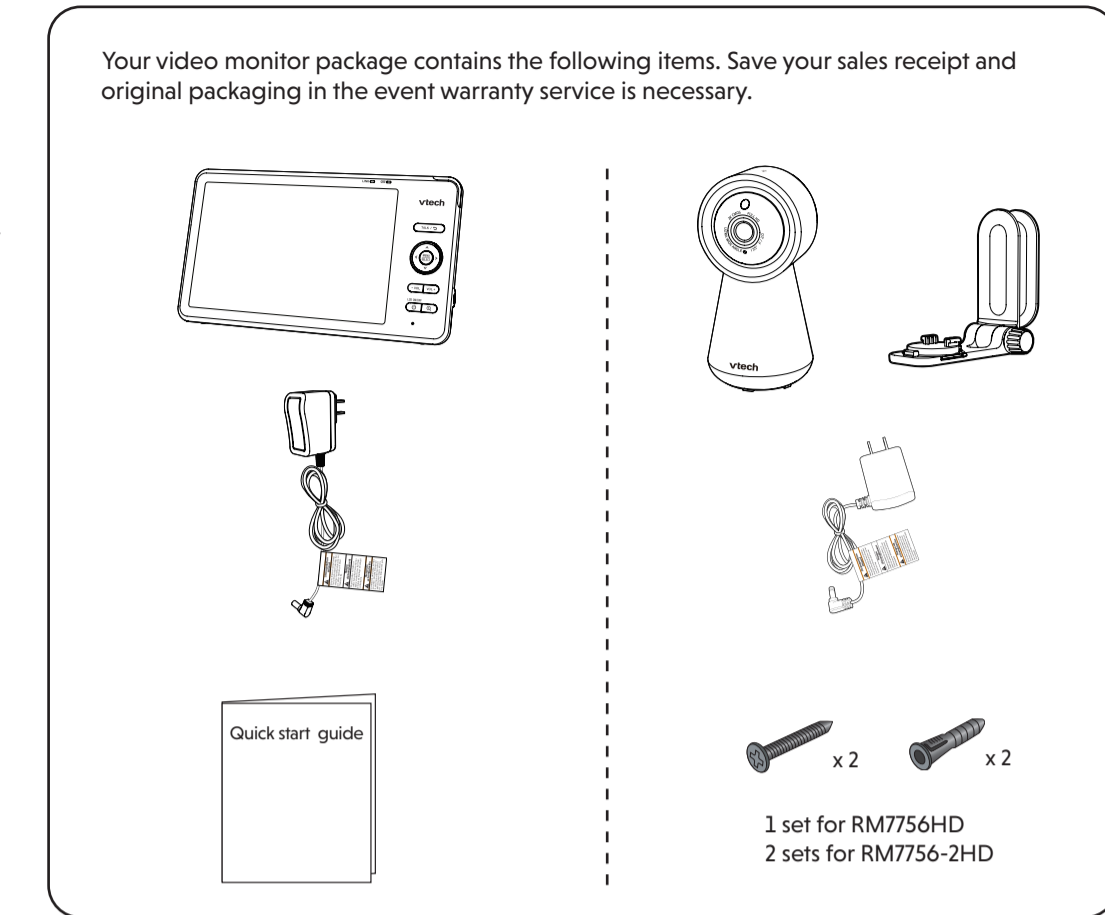
- Use and store the product at a temperature between 32°F (0°C) and 104°F (40°C).
- Mishandling batteries can cause burn, fire or explosion hazards.
- Batteries should not be exposed to excessive heat such as bright sunshine or fire.
- Do not expose the product to extreme cold, heat or direct sunlight. Do not put the product close to a heating source.

Warning—Strangulation Hazard— Children have STRANGLED in cords. Keep this cord out of the reach of children (more than 3 ft (0.9m) away). Do not remove warning label on the adaptor cord.

Never place the camera unit(s) inside the baby's cot or playpen. Never cover the camera unit(s) or parent unit with anything such as a towel or a blanket.

Other electronic products may cause interference with your camera unit. Try installing your camera unit as far away from these electronic devices as possible: wireless routers, radios, cellular telephones, intercoms, room monitors, televisions, personal computers, kitchen appliances and cordless telephones.

WHAT'S IN THE BOX

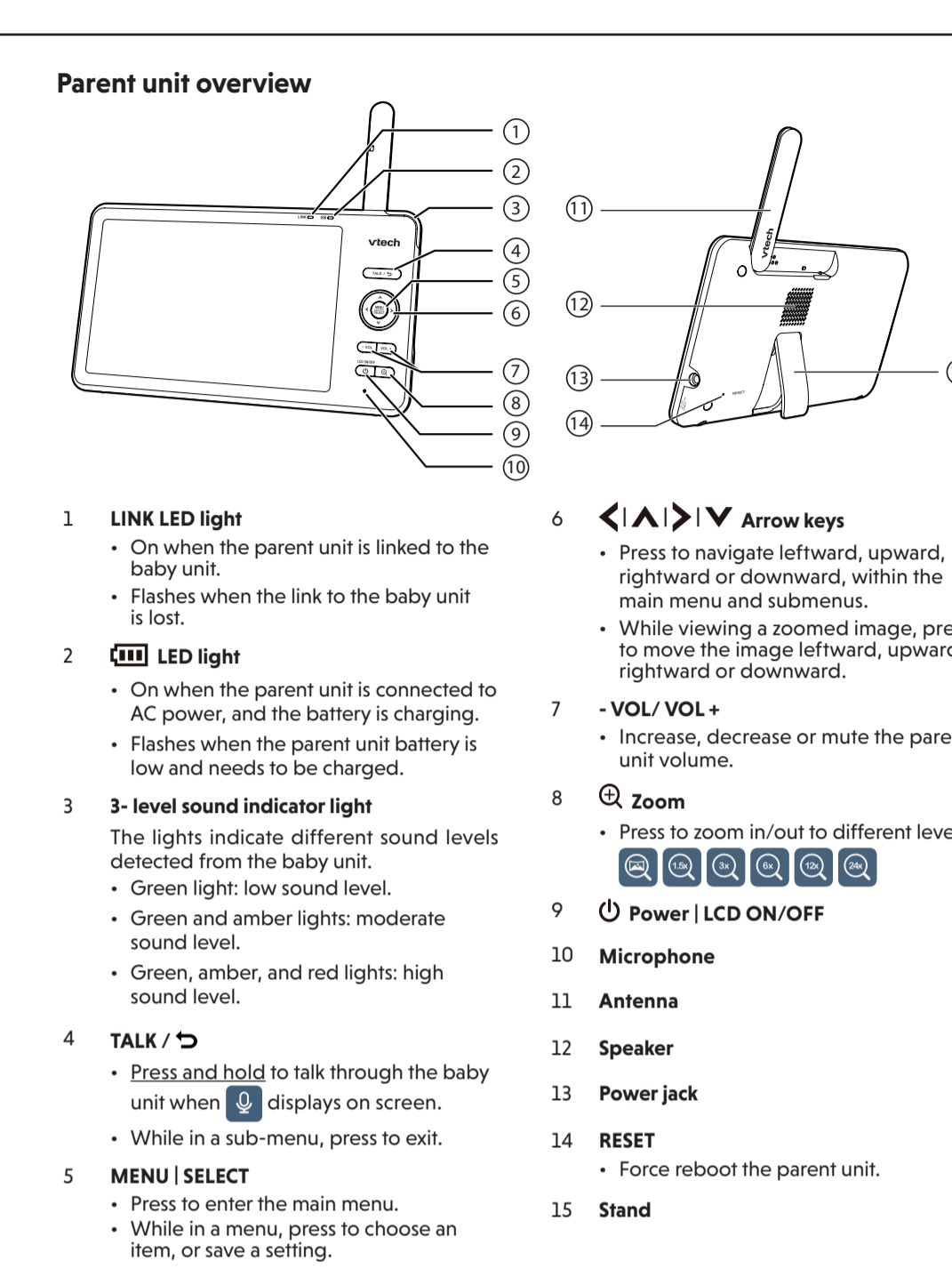
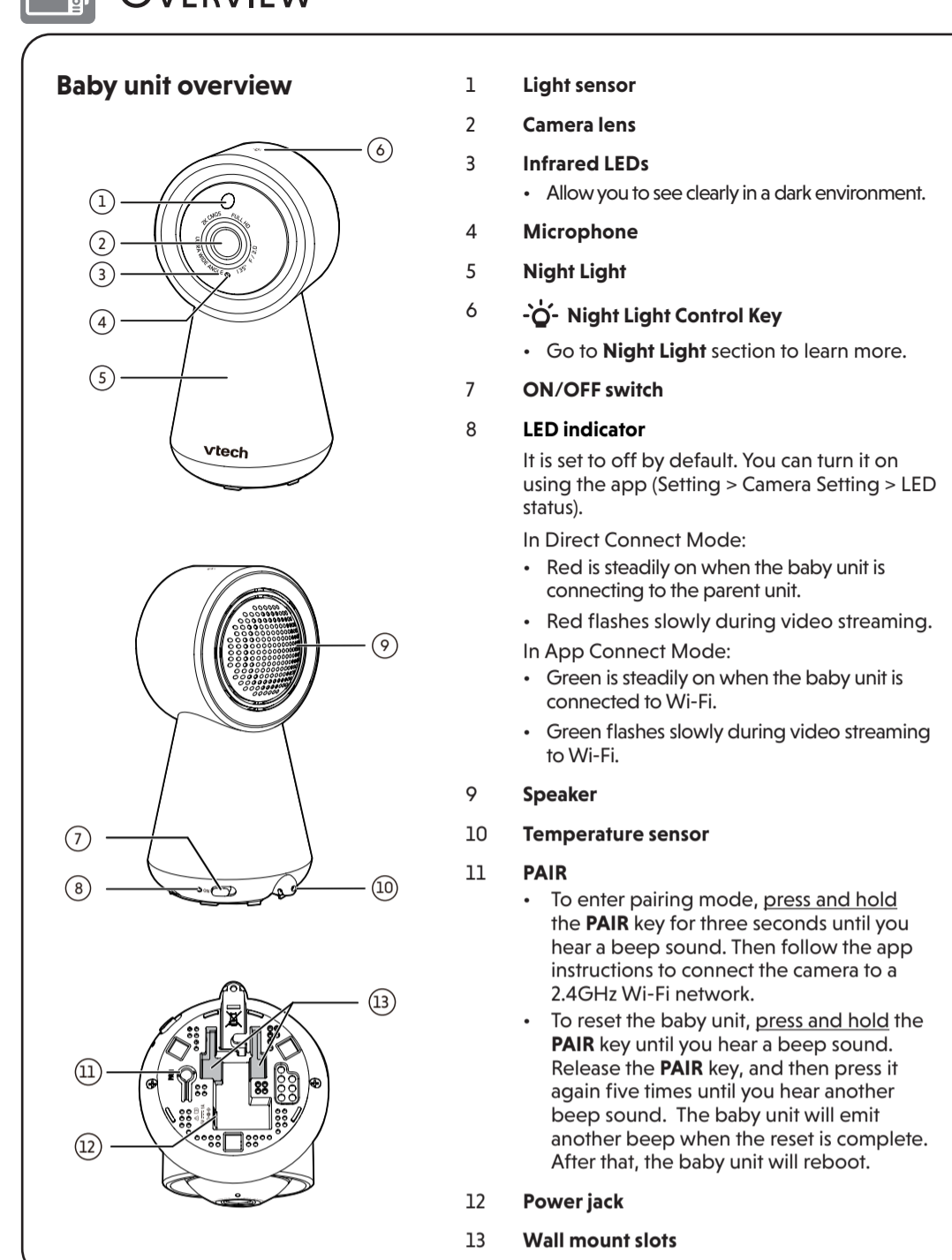


Requirements

For mobile access:

MyVtech Baby Plus mobile app	
Network	Wi-Fi
Wi-Fi router	2.4GHz 802.11 b/g/n
Internet connection	1.5 Mbps @ 720p or 2.5 Mbps @1080p upload bandwidth per baby unit

OVERVIEW



DOWNLOAD APP FOR MOBILE ACCESS

Use the **MyVtech Baby Plus** on your mobile device to monitor your baby remotely. Follow the instructions below to set up and pair your baby monitor with the app.

- Scan the QR code to download the free **MyVtech Baby Plus** mobile app, or search "MyVtech Baby Plus" on App Store or Google Play Store. If you have previously installed the app, ensure that you have the latest version.

NOTE

- Make sure your mobile device meets the minimum requirement for the mobile app.

Minimum requirement
The mobile app is compatible with:

- Android™ 9.0 or later; and
- iOS 14 or later.

- Tap to launch the mobile app on your device and create an account.
- We recommend that you use common webmail services, such as Google Gmail, to register your user account. Check your email (including the Spam folder) and activate your new account by entering the email verification code. Then, sign in to your account.
- Ensure that you are connected to a **2.4GHz Wi-Fi network** and have enabled **Bluetooth** and **Location Service** on your device.
- After signing in to the app, select **Camera(s) with Parent unit** and scan the QR code displayed on the parent unit. To find the QR code, press the **MENU/SELECT** button and go to > **Connect to Mobile App**.
- Input the Wi-Fi password.
- Press and hold the pair key on the baby unit for 3 seconds until you hear the beep sound to enter pairing mode.
- Select the camera model that appears in the app and wait for the camera to connect. Once connected, it will display a live view preview.
- Select **"Continue"** and create a profile for your baby (Optional). Now you can start monitoring! (For models with 2 cameras, a pop-up will ask if you wish connect another camera. Repeat steps 7-9 for the second camera.)

TIP
Use **Camera Sharing** to instantly share access to the camera. Follow these steps:

- Go to **Menu** and select **Camera Sharing**.
- Choose **"Invite People"** and enter the name and email address of the family member's app account.
- The family member will receive a pop-up notification in the app and can accept the invitation to access the camera(s).

CONNECT, CHARGE AND POWER ON THE BABY MONITOR

Connect the baby monitor

NOTES

- The rechargeable battery in the parent unit is built-in.
- Use only the power adapters supplied with this product.
- Make sure the parent unit and the baby unit are not connected to an electronically/timer controlled electric power outlet.
- Connect the power adapters in a vertical or floor mount position only. The adapter prongs are not designed to hold the weight of the parent unit and the baby unit, so do not connect them to any ceiling, under-the-table, or cabinet outlets. Otherwise, the adapters may not properly connect to the outlets.
- Make sure the parent unit, the baby unit and the power adapter cords are out of reach of children.

Slide the **ON** switch to power on or off your baby unit.

NOTES

- The status LED is set to off by default. You can turn it on using the app (Setting > Camera Setting > LED status).
- When powering up, the baby unit's orange status LED turns on. It will turn off after a while and remain off if the status LED is set to off.
- A steady orange light with no video or audio streaming can indicate a fault condition.

NOTE
The baby unit may get warm during use. This is normal.

Charge the parent unit battery before use

The parent unit operates on an internal rechargeable battery or AC power. To continuously monitor your baby, keep the parent unit connected to AC power. When the parent unit is used on the internal batteries, the operating time will vary according to the initial state of charge and the settings.

NOTES

- Before using the baby monitor for the first time, charge the parent unit battery for 12 hours. The red battery LED light flashes during charging. When the parent unit battery is fully charged, the battery LED light and the battery icon segments are solid .
- The standby time varies depending on your actual use.

The parent unit turns on automatically after connecting to the power socket, and the welcome screen appears. You can **press and hold** to turn the parent unit on or off.

BATTERY INDICATORS	BATTERY STATUS	ACTION
The screen displays and . The LED light flashes.	The battery has very little charge and may be used for only a short time.	Charge without interruption (about 30 minutes).
The battery icon segments are solid .	The battery is fully charged.	To keep the battery charged, connect it to AC power when in use.

For optimum reception, raise the parent unit antenna.

PARENT UNIT ICONS

Main Menu	Sub-menu	Options
		Monitoring mode (For RM7756-2HD only) <ul style="list-style-type: none"> View baby units in Single mode. View baby units in Patrol mode (switch view every 10 seconds). View baby units in Split screen.
		On/Off <ul style="list-style-type: none"> Toggle the night light on or off.
		Colour <ul style="list-style-type: none"> Select a night light colour. Customised colour is available if your baby unit is paired with MyVtech Baby Plus app.
		Brightness <ul style="list-style-type: none"> Adjust the night light brightness. Set the brightness to AUTO adaptive ambience.
		Timer <ul style="list-style-type: none"> Turn the screen off timer OFF, or set the screen to turn off after 1, 3 or 5 minutes when no sound is detected. Select AUTO to set the Sound Sensitivity level for auto screen on when a sound is detected over the set level. The screen will turn off after 50 seconds of no sound detection.
		Melodies and soothing sounds <ul style="list-style-type: none"> Play/Stop <ul style="list-style-type: none"> Toggle between play and stop. Library <ul style="list-style-type: none"> Select to play all melodies, or play one of the five melodies or five soothing sounds.
		Camera Volume <ul style="list-style-type: none"> Adjusts baby unit speaker volume.
		Screen Brightness <ul style="list-style-type: none"> Adjusts parent unit screen brightness.
		Screen Off Timer <ul style="list-style-type: none"> Turn the screen off timer OFF, or set the screen to turn off after 1, 3 or 5 minutes when no sound is detected. Select AUTO to set the Sound Sensitivity level for auto screen on when a sound is detected over the set level. The screen will turn off after 50 seconds of no sound detection.
		Temperature <ul style="list-style-type: none"> Turn the temperature alert on/off. Select the temperature alert maximum and minimum temperature limits.
		Low Battery <ul style="list-style-type: none"> Toggle the low battery alert on or off.
		Lost Link <ul style="list-style-type: none"> Toggle the lost link alert on or off.
		Help and info <ul style="list-style-type: none"> Help <ul style="list-style-type: none"> Support Information How-to Video <ul style="list-style-type: none"> Support video System Info <ul style="list-style-type: none"> System Information

HOW THE SYSTEM WORKS

TIP To receive product firmware updates, this baby monitor requires connecting to a 2.4GHz home Wi-Fi network.

Direct Connect Mode

Your baby monitor parent unit and baby unit connect to each other in **Direct Connect Mode** by default, which allows you to immediately stream video out of the box.

Alerts Settings

- Adjust alerts volume level.
- Motion Detect
 - Turn the motion detection alert on/off.
 - Adjust **Motion Sensitivity** level for waking the parent unit screen.
- App Connect Mode
 - The signal icon(s) on the left indicate the baby unit is connected to a home Wi-Fi network. The red icon(s) indicates no connection.
 - Baby unit 1 and 2 are being viewed in Patrol mode (For RM7756-2HD only).
 - Baby unit 1 and 2 are being viewed in Split mode (For RM7756-2HD only).
 - Night vision is turned on.
 - Motion detection alert is turned on.
 - Melodies and soothing sounds are playing.
 - Night light is turned on.
 - Auto night light brightness is activated.
 - Temperature alert is turned on.
 - Parent unit is muted.
 - Temperature measured at baby unit.
 - Battery level indicator
 - Low battery indicator

App Connect Mode

To enhance your experience and enjoy seamless live video streaming via your mobile app, and to receive product software updates (when available), we highly recommend setting up your monitor's Wi-Fi connection.

It uses your 2.4GHz home Wi-Fi network to connect your video monitor. It supports live video streaming through the mobile app.

To stream live video remotely with your mobile device, download and install the **MyVtech Baby Plus** mobile app. With the mobile app, your Wi-Fi router (not included) provides Internet connectivity to your HD video monitor system. It serves as a communicating channel between your baby unit and mobile device, allowing you to monitor and/or control your baby unit wherever you are. For more details, see **Download app for mobile access** section in this quick start guide.

PROTECT YOUR PRIVACY AND ONLINE SECURITY

Vtech cares about your privacy and peace of mind. That's why we've put together a list of industry-recommended best practices to help keep your wireless connection private and your devices protected when online. We recommend you carefully review and consider complying with the following tips.

Ensure your wireless connection is secure.

- Before installing a device, ensure your router's wireless signal is encrypted by selecting the "WPA2-PSK with AES" setting in your router's wireless security menu.
- Change default settings.
- Change your wireless router's default wireless network name (SSID) to something unique.
- Change default passwords to unique, strong passwords. A strong password:
 - Is at least 10 characters long.
 - Is complex.
 - Does not contain dictionary words or personal information.
 - Contains a mix of uppercase letters, lowercase letters, special characters and numbers.

Keep your devices up to date.

- Download security patches from manufacturers as soon as they become available. This will ensure you always have the latest security updates.
- If the feature is available, enable automatic updates for future releases.

Disable Universal Plug and Play (UPnP) on your router.

- UPnP enabled on a router can limit the effectiveness of your firewall by allowing other network devices to open inbound ports without any intervention or approval from you. A virus or other malware program could use this function to compromise security for the entire network.

For more information on wireless connections and protecting your data, please review the following resources from industry experts:

- Federal Communications Commission: Wireless Connections and Bluetooth Security Tips - www.fcc.gov/consumers/guides/how-protect-yourself-online.
- U.S. Department of Homeland Security: Before You Connect a New Computer to the Internet - www.us-cert.gov/ncas/tips/ST15-003.
- Federal Trade Commission: Using IP Cameras Safely - <https://www.consumer.ftc.gov/articles/0382-using-ip-cameras-safely>.
- Wi-Fi Alliance: Discover Wi-Fi Security - <http://www.wi-fi.org/discover-wi-fi-security>.