



# 7" Wi-Fi High Definition Pan & Tilt Monitor

LF930HD  
LF930-2HD



## Parent Guide

This guide contains important information. Please keep it for future reference.

Visit our website [leapfrog.com](http://leapfrog.com) for more information about products, downloads, resources and more. Read our complete warranty policy online at [leapfrog.com/warranty](http://leapfrog.com/warranty).



Scan the QR code for more online support:



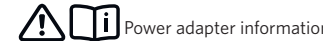
Or go to [leapfrog.com/support](http://leapfrog.com/support)

## Important Safety Instructions

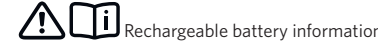
The applied nameplate is located at the bottom of the Baby Unit's base.

When using your equipment, basic safety precautions should always be followed to reduce the risk of fire, electric shock and injury, including the following:

- Follow all warnings and instructions marked on the product.
- Adult setup is required.
- CAUTION:** Do not install the Baby Unit at a height above 6.5 feet (2 meters).
- This product is intended as an aid. It is not a substitute for responsible and proper adult supervision and should not be used as such.
- This product is not intended for use as a medical monitor.
- Do not use this product near water, for example, near to a bath, sink, swimming pool or shower.
- CAUTION:** Use only the battery provided. There may be a risk of explosion if a wrong type of battery is used for the Parent Unit. The battery cannot be subjected to high or low extreme temperature and low air pressure at high altitude during use, storage or transportation. Disposal of battery in fire or a hot oven, mechanically crushing or cutting the battery can result in an explosion. Leaving the battery in an extremely high temperature surrounding environment can result in an explosion or the leakage of flammable liquid of gas. Battery subjected to extremely low air pressure may result in an explosion or the leakage of flammable liquid or gas. Dispose of used battery according to the information in **The RBRC seal**.
- Use only the power adapters included with this product. Incorrect power adapter polarity or voltage can seriously damage the product.



**Power adapter information:**  
Baby Unit Output: 5V DC 1.5A  
V-Tech Telecommunications Ltd.  
Model: VT07EUS05150  
Parent Unit Output: 5V DC 2A  
V-Tech Telecommunications Ltd.  
Model: VT07EUS05200



- Rechargeable battery information:**  
Zhuohai Great Power Energy Co., Ltd.; Lithium battery, 3.7V 5000mAh; Model: GSP806090-5Ah-3.7V-1S1P
- The power adapters are intended to be correctly oriented in a vertical or floor mount position. The prongs are not designed to hold the plug in place if it is plugged into a ceiling, under-table or cabinet outlet.
  - For pluggable equipment, the socket-outlet shall be installed near the equipment and shall be easily accessible.
  - Unplug this product from the wall outlet before cleaning. Do not use liquid or aerosol cleaners. Use a damp cloth for cleaning.
  - Do not modify the power adapters or replace with other adapters, as this causes a hazardous situation.
  - Do not allow anything to rest on the power cords. Do not install this product where the cords may be walked on or crimped.
  - This product should be operated only from the type of power source indicated on the marking label. If you are not sure of the type of power supply in your home, consult your dealer or electricity supply provider.
  - Do not overload wall outlets or use an extension cord.
  - Do not place this product on an unstable table, shelf, stand or other unstable surfaces.
  - This product should not be placed in any area where proper ventilation is not provided. Slots and openings in the back or bottom of this product are provided for ventilation. To protect them from overheating, these openings must not be blocked by placing the product on a soft surface such as a bed, sofa or rug. This product should never be placed near or over a radiator or heat source.
  - Never push objects of any kind into this product through the slots because they may touch dangerous voltage points or create a short circuit. Never spill liquid of any kind on the product.

- To reduce the risk of electric shock, do not disassemble this product, but take it to an authorized service facility. Disassembling or removing parts of the product other than via the battery door may expose you to dangerous voltages or other risks. Incorrect reassembling can cause electric shock when the product is subsequently used.
- You should test the sound reception every time you turn on the units or move one of the components.
- Periodically examine all components for damage.
- There is a very low risk of privacy loss when using certain electronic devices, such as baby monitors, cordless telephones, etc. **To protect your privacy, make sure the product has never been used before purchase, reset the baby monitor periodically by powering off and then powering on the units, and power off the baby monitor if you are not intending to use it for some time.**
- The small parts of this monitor can be swallowed by babies or small children. Keep these parts out of reach of children.
- Children should be supervised to ensure that they do not play with the product.
- The product is not intended for use by persons (including children) with reduced physical, sensory or mental capabilities, or lack of experience and knowledge, unless they have been given supervision or instruction concerning use of the appliance by a person responsible for their safety.

### SAVE THESE INSTRUCTIONS

- Caution:**
- Use and store the product at a temperature between 32°F (0°C) and 104°F (40°C).
  - Do not expose the product to extreme cold, heat or direct sunlight. Do not put the product close to a heating source.
  - Batteries should not be exposed to excessive heat such as bright sunshine or fire.
  - Mishandling batteries can cause burn, fire or explosion hazards.
  - Warning—Strangulation Hazard—Children have STRANGLED in cords. Keep this cord out of the reach of children (more than 3 ft (0.9m) away). Do not remove warning label on the adapter cord.**
  - Never place the Baby Unit(s) inside the baby's crib or playpen. Never cover the Baby Unit(s) or Parent Unit with anything such as a towel or a blanket.
  - Other electronic products may cause interference with your baby monitor. Try installing your baby monitor as far away from these electronic devices as possible: wireless routers, radios, cellular telephones, intercoms, room monitors, televisions, personal computers, kitchen appliances and cordless telephones.

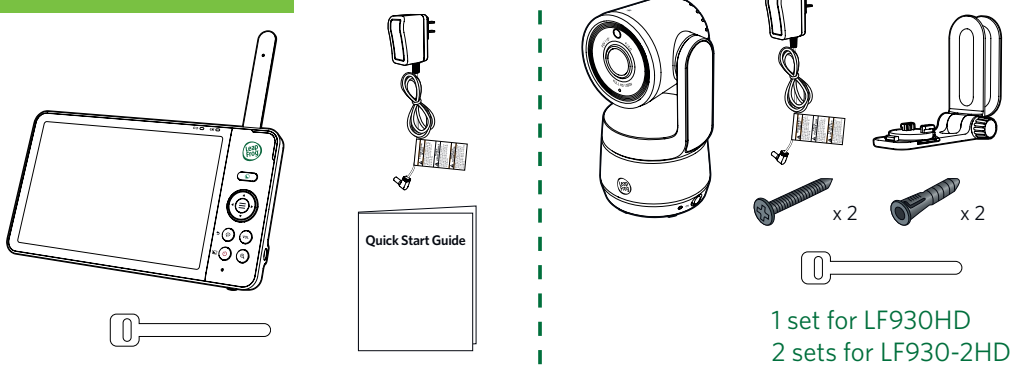
**Precautions for users of implanted cardiac pacemakers**  
Cardiac pacemakers (applies only to digital cordless devices): Wireless Technology Research, LLC (WTR), an independent research entity, led a multidisciplinary evaluation of the interference between portable wireless devices and implanted cardiac pacemakers. Supported by the U.S. Food and Drug Administration, WTR recommends to physicians that:

**Pacemaker patients**

- Should keep wireless devices at least six inches from the pacemaker.
- Should NOT place wireless devices directly over the pacemaker, such as in a breast pocket, when it is turned ON. WTR's evaluation did not identify any risk to bystanders with pacemakers from other persons using wireless devices.

**Electromagnetic fields (EMF)**  
This LeapFrog product complies with all standards regarding electromagnetic fields (EMF). If handled properly and according to the instructions in this user's manual, the product is safe to be used based on scientific evidence available today.

## What's Included



1 set for LF930HD  
2 sets for LF930-2HD

## Download LeapFrog Baby Care+ App

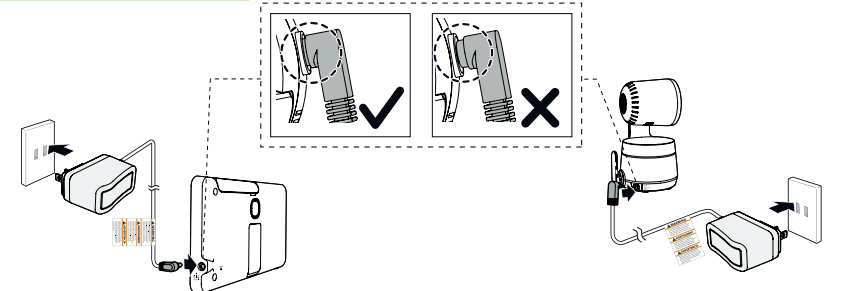
Start monitoring from anywhere.

Scan the QR code to download the free LeapFrog Baby Care+ mobile app, or search "LeapFrog Baby Care+" on Apple App Store or Google Play Store.



## Connect, Charge, and Power On the Baby Monitor

### 1. Connect the Baby Monitor



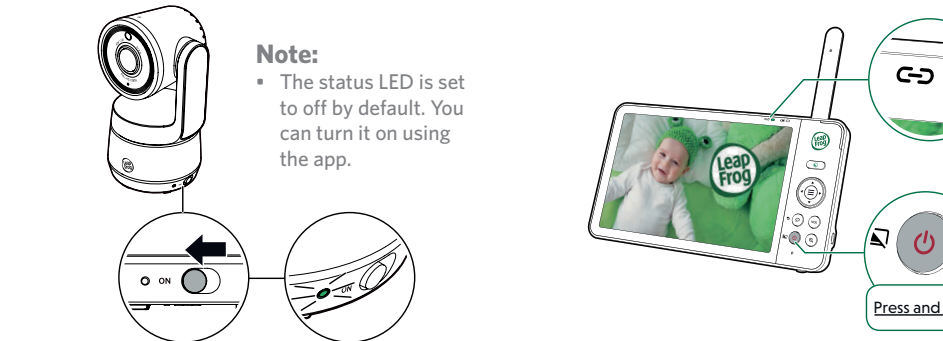
### 2. Charge the Parent Unit Battery

#### Notes:

- Before using the baby monitor for the first time, charge the Parent Unit battery for 12 hours. When the parentunit battery is fully charged, the battery icon segments become solid.
- The standby time varies depending on your actual usage time and the age of the battery.

## 3. Power On or Off the Baby Monitor

- Slide the On/Off switch to **ON** to power on your Baby Unit.
- Press and hold until the welcome screen appears.



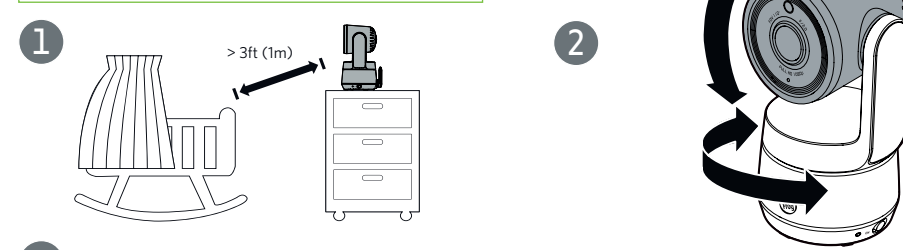
#### Note:

- The status LED is set to off by default. You can turn it on using the app.

## 4. Status Check

The Parent Unit turns on automatically after connecting to the power socket, and the welcome screen appears. Then, the green LED light flashes and turns on steady when successfully connected.

## 5. Positioning the Baby Monitor



#### Caution:

The default volume of your Parent Unit is level 3, and the maximum volume is level 5. If you experience any feedback noise from your baby monitor while positioning:

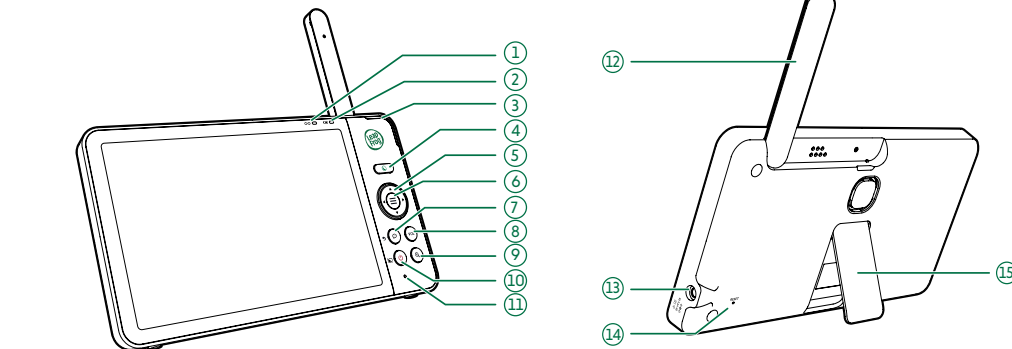
- Make sure your Baby Unit and Parent Unit are more than 10 feet (3 meters) apart, **OR**
- Lower the volume of your Parent Unit.

#### Note:

To avoid interference from other electronic devices, place your baby monitor at least 3 feet (1 meter) away from devices such as wireless routers, microwave ovens, mobile phones and computers.

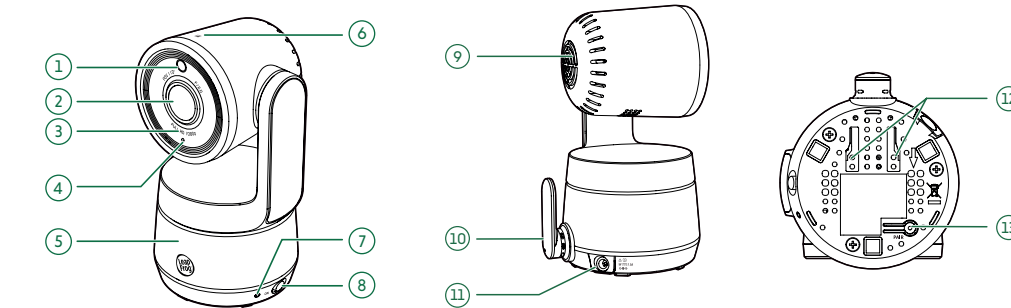
## Overview

### Parent Unit



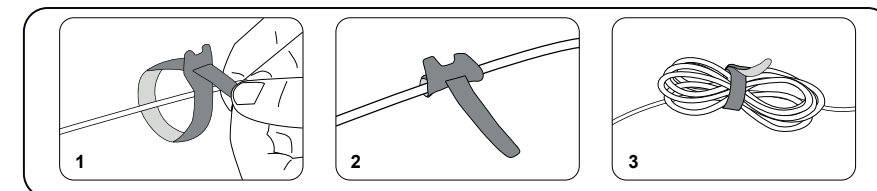
- Link LED light**
  - On when the Parent Unit is linked to the Baby Unit.
  - Flashes when the link to the Baby Unit is lost.
- Battery LED light**
- 3-level sound indicator light**
- Night Mode quick set key**
  - Select black-and-white night vision for extreme darkness or color night vision for dim environments (the use of the Baby Unit night light or other supplementary light sources is required).
  - To activate night light in color night vision, press to turn it on for 30 seconds, and press to adjust its brightness.
- Arrow Keys**
  - to adjust volume.
  - Navigate within the menus.
  - Pan and tilt the camera.
- Menu / Select**
  - Press to enter the main menu.
  - While in a menu, press to confirm a selection, or save a setting.
- Talk / Return**
  - Press and hold to talk to the Baby Unit.
  - While in a sub-menu, press to exit.
- VOL Volume**
  - Press to view the volume adjustment bar.
- Zoom**
  - Press to zoom in/out to different levels
- Power / LCD Off**
  - Press and hold to turn on/off the power.
  - Press to turn on/off the LCD screen.
- Microphone**
- Antenna**
- Power jack**
- RESET**
  - Force reboot the Parent Unit.
- Stand**

### Baby Unit



- Light sensor**
- Camera**
- Infrared LEDs**
- Microphone**
- Night light**
- Night light control key**
  - Single Tap: Turn on/off.
  - Tap and hold (with the light turned on): Adjust night light brightness.
- POWER LED Light**
- On / Off switch**
- Speaker**
- Antenna**
- Power jack**
- Wall mount slots**
- PAIR key**
  - To enter pairing mode, press and hold the **PAIR** key for three seconds until you hear a beep sound. Then follow the app instructions to connect the camera to a 2.4GHz Wi-Fi network.

## Cable Management



Scan the QR code for more online support:



Or go to [leapfrog.com/support](http://leapfrog.com/support)