

Go to www.vtechphones.com to register your product for enhanced warranty support and the latest VTech product news.

VM350
VM350-2

Full Color Video Monitor



vtech®

Quick start guide

For more support information



© 2020 VTech Communications, Inc. All rights reserved.
1710 VM350-X-056_V1
Specifications are subject to change without notice.
The Heart Beat sound file was created by Zarabeden, and is used under the Creative Commons license.
The Chickens At Night sound file was created by Mike Koening, and is used under the Creative Commons license.
The Stream Noise sound file was created by Caroline Ford, and is used under the Creative Commons license.
The Background Noise sound file was created by Caroline Ford, and is used under the Creative Commons license.
Credits:

Power requirements	Parent unit power adapter: Output: 5V DC @ 1A Parent unit battery: 3.8V 2100mAh Li-ion battery
Nominal effective range	Maximum power allowed by FCC and IC: Actual operating range may vary according to environmental conditions at the time of use.
LCD	5" Color LCD (WVGA 480x272 pixel)
Channels	32
Transmit frequency	Parent unit: 2405 - 2475 MHz Baby unit: 2405 - 2475 MHz
Frequency control	Crystal controlled PLL synthesizer

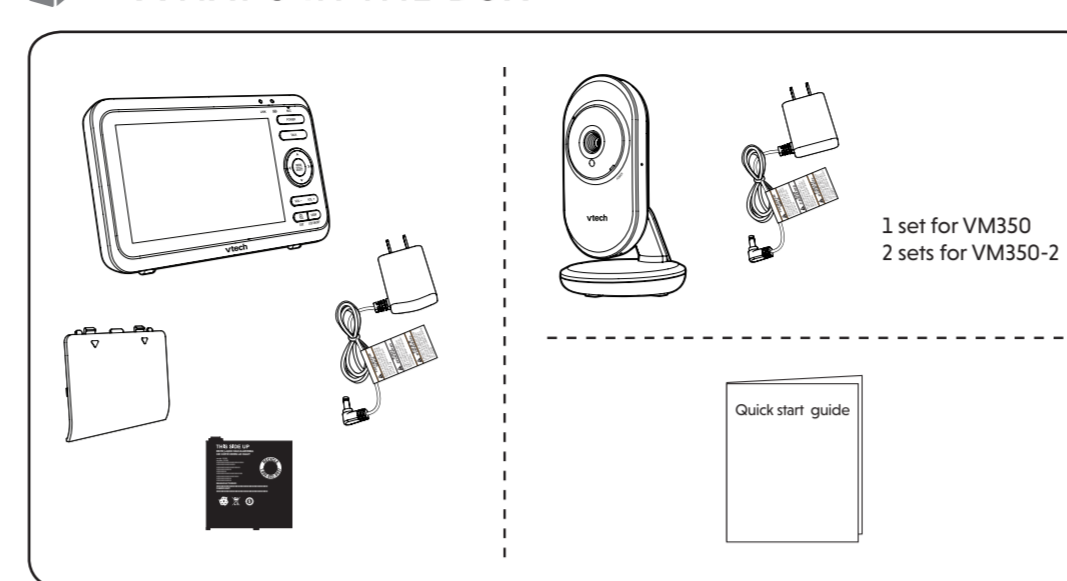
TECHNICAL SPECIFICATIONS

IMPORTANT SAFETY INSTRUCTIONS

- The applied nameplate is located at the bottom of the baby unit's base.
- When using your equipment, basic safety precautions should always be followed to reduce the risk of fire, electric shock and injury, including the following:
- Follow all warnings and instructions marked on the product.
 - Adult setup is required.
 - CAUTION:** Do not install the baby unit at a height above 2 meters.
 - This product is not a substitute for adult supervision of the infant. Supervising the infant is the parent's or caregiver's responsibility. This product could cease operating, and therefore you should not assume it will continue working properly for any given period of time. Further, this is not a medical device and should not be used as such. This product is intended to assist you in supervising your baby.
 - Do not use this product near water. For example, do not use it next to a bath tub, wash bowl, kitchen sink, laundry tub or swimming pool, or in a wet basement or shower.
 - CAUTION:** Use only the batteries provided. There may be a risk of explosion if a wrong type of battery is used for the parent unit. The batteries cannot be subjected to high or low extreme temperature and low air pressure at high altitude during use, storage or transportation. Disposal of batteries into fire or a hot oven, or mechanically crushing or cutting the batteries can result in an explosion. Leaving the batteries in an extremely high temperature surrounding environment can result in an explosion or the leakage of flammable liquid of gas. Batteries subjected to extremely low air pressure may result in an explosion or the leakage of flammable liquid or gas. Dispose of used battery according to the information in The RBRC seal.
 - Use only the adapters included with this product. Incorrect adapter polarity or voltage can seriously damage the product. Use only adaptors and batteries listed below.

- Use and store the product at a temperature between 32°F and 104°F.
 - Do not expose the product to extreme cold, heat or direct sunlight. Do not put the product close to a heating source.
 - Batteries should not be exposed to excessive heat such as bright sunshine or fire.
 - Warning—Strangulation Hazard—Children have STRANGLING in cords. Keep this cord out of the reach of children (more than 3 ft (0.9 m) away). Do not remove this tag.**
 - Never place the baby unit inside the baby's crib or playpen. Never cover the baby unit or parent unit with anything such as a towel or a blanket.
 - Other electronic products may cause interference with your baby monitor. Try installing your baby monitor as far away from these electronic devices as possible: wireless routers, radios, cellular telephones, intercoms, room monitors, televisions, personal computers, kitchen appliances and cordless telephones.
- Precautions for users of implanted cardiac pacemakers**
Cardiac pacemakers (applies only to digital cordless devices): Wireless Technology Research, LLC (WTR), an independent research entity, led a multidisciplinary evaluation of the interference between portable wireless devices and implanted cardiac pacemakers. Supported by the U.S. Food and Drug Administration, WTR recommends to physicians that:
- Pacemaker patients**
- Should keep wireless devices at least six inches from the pacemaker.
 - Should NOT place wireless devices directly over the pacemaker, such as in a breast pocket, when it is turned ON. WTR's evaluation did not identify any risk to bystanders with pacemakers from other persons using wireless devices.
- Electromagnetic fields (EMF)**
This VTech product complies with all standards regarding electromagnetic fields (EMF). If handled properly and according to the instructions in this user's manual, the product is safe to be used based on scientific evidence available today.

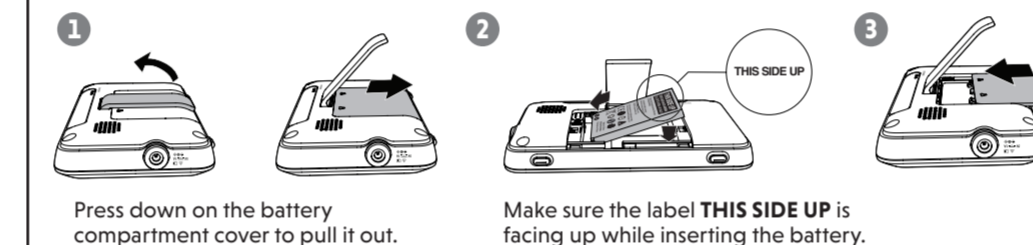
WHAT'S IN THE BOX



1 CONNECT THE BABY MONITOR

Install the battery
The parent unit runs on rechargeable battery or AC power. To continuously monitor your baby, make sure you use both battery and AC power at the same time. With the battery alone, the parent unit can cordlessly run for a short time only.

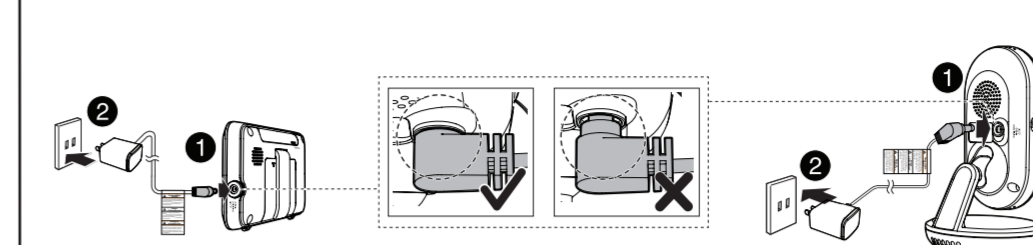
- NOTES**
- Use only the battery supplied with this product.
 - If the parent unit will not be used for a long time, disconnect and remove the battery to prevent possible leakage.



Replace the battery
To replace the battery, press down on the battery compartment cover and pull it out, then follow the steps above to install the battery.

Connect the baby monitor

- NOTES**
- Use only the power adapters supplied with this product.
 - Make sure the baby monitor is not connected to the switch controlled electric outlet.
 - Connect the power adapters in a vertical or floor mount position only. The adapters' prongs are not designed to hold the weight of baby monitor, so do not connect them to any ceiling, under-the-table, or cabinet outlets. Otherwise, the adapters may not properly connect to the outlets.
 - Make sure the parent unit, the baby unit and the power adapter cords are out of reach of children.

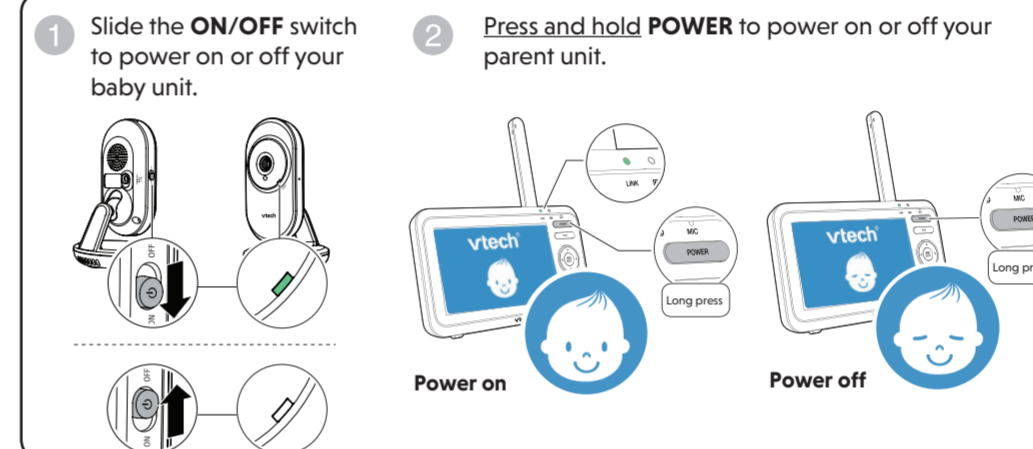


Charge the parent unit battery

When you have connected and turned on the parent unit, the battery will be charged automatically.

- NOTES**
- Before using the baby monitor for the first time, charge the parent unit battery for 12 hours. When the parent unit battery is fully charged, the battery icon becomes solid.
 - It takes longer to charge the battery when the parent unit is turned on. To shorten the charging time, turn the parent unit off while charging.
 - The standby time varies depending on the sensitivity level you set, your actual use and the age of the battery.

2 POWER ON OR OFF THE BABY MONITOR



3 POSITIONING THE BABY MONITOR

- CAUTION**
- Keep the baby unit out of the reach of your baby. Never place or mount the baby unit inside the baby's crib or playpen.
- Position the baby unit at least 3ft (1m) away from the parent unit.
 - Position the baby unit at least 3ft (1m) away from the parent unit.
 - Position the baby unit at least 3ft (1m) away from the parent unit.
 - Position the baby unit at least 3ft (1m) away from the parent unit.
- CAUTION**
- The default volume of your parent unit is level 4, and the maximum volume is level 7. If you experience high-pitched screeching noise from your baby monitor while positioning:
 - Make sure your baby unit and parent unit are more than 3 feet (1 meter) apart, OR
 - Lower the volume of your parent unit.
- NOTE**
- To avoid interference from other electronic devices, place your baby monitor at least 3 feet (1 meter) away from devices such as wireless routers, microwaves, cell phones and computers.

4 STATUS CHECK

Once you power on both your baby unit and parent unit, your parent unit displays image from the baby unit, and the **LINK LED** light turns on.

The **POWER LED** light of baby unit turns on.

BASIC OPERATION - PARENT UNIT

Adjust speaker volume
Press **VOL+** / **VOL-** to adjust your parent unit speaker volume.

Zoom
Press **Q** to zoom in or out.

Talk to your baby unit
Press and hold **TALK** and speak to your parent unit. Your voice is transmitted to the baby unit. Release **TALK** when finish talking and hear your baby again.

Turn off the screen
Press and hold **LCD ON/OFF** to switch off the screen. You can still hear sound from the baby unit.

TIP
Press any keys on the parent unit to turn on the screen again.

Use the menu
Press **MENU/SELECT** to enter the menu, choose a menu item, or save a setting. You can use the parent unit for advanced settings or operations, such as to play or stop the baby unit lullaby, or to adjust the baby unit sound sensitivity.

While in the menu:

- Press **<** or **>** to scroll among the menu options.
- Press **MENU/SELECT** to select an item, or to save a setting.
- Press **▲** or **▼** to scroll among the sub-menus, or to adjust a setting.
- Press **<** to return to the previous menu options without changing the current setting.
- Press **Q/EXIT** to return to live video.

OVERVIEW - PARENT UNIT

1 LCD display	7 Arrow keys	13 Speaker
2 Antenna	8 MENU/SELECT	14 Battery compartment cover
3 LED lights	9 Power jack	15 Stand
4 Microphone	10 VOL - / VOL +	
5 POWER	11 VIEW / LCD ON/OFF	
6 TALK	12 Q / EXIT	

OVERVIEW - BABY UNIT

- Pair hole**
Your baby units and parent unit provided are already paired.
- POWER LED light**
On when the baby unit is turned on and is paired to the parent unit.
Flashes when the baby unit is not being viewed; or when the link to the parent unit is lost.
- Microphone**
- Camera**
- Infrared LEDs**
- Light sensor**
- ON/OFF switch**
Slide to turn on or off the baby unit.
- Speaker**
- Power jack**
- Wall mount holes**

NEED HELP?

For operations and guides to help you using your video monitor, and for latest information and supports, go and check the online help topics and online FAQs.

Use your smartphone or mobile device to access our online help.

- Go to <https://help.vtechphones.com/vm350> or <https://help.vtechphones.com/vm350-2>; OR
- Scan the QR code on the right. Launch the camera app or QR code scanner app on your smartphone or tablet. Hold the device's camera up to the QR code and frame it. Tap the notification to trigger the redirection of the online help.
 - If the QR code is not clearly displayed, adjust your camera's focus by moving your device closer or further away until it is clear.

You can also call our Customer Support at 1 (800) 595-9511 [in US] or 1 (800) 267-7377 [in Canada] for help.

PARENT UNIT ICONS

Main menu icons

Main menu	Sub-menu	Main menu	Sub-menu
Brightness	Adjust the parent unit's LCD brightness.	Alert tones	Set the parent unit to beep when the battery is low. Set the parent unit to beep when the link between the parent unit and the baby unit is lost. Set the confirmation tone on or off when selecting an option in the menus. Set the parent unit to beep when the baby unit detects sounds while in Split mode (For VM350-2 only).
Camera settings	Baby unit speaker volume Adjust the baby unit's speaker volume.	Temperature	ON/OFF Turn on/off temperature alert tone. Set the parent unit to beeps whenever the room temperature detected by the baby unit falls outside of the set temperature range. Set the minimum temperature. Set the maximum temperature. Set temperature display in Fahrenheit (°F) or Celsius (°C).
Monitoring mode (For VM350-2 only)	Single mode Split mode Patrol mode	VOX (Voice Activated Alert) Sensitivity	You can set VOX sensitivity level to activate parent unit screen and sound when baby unit detects sounds that exceed certain levels. See Sound sensitivity and sound activation section.
Lullaby	Play/Stop lullaby Select one of the soothing sounds, or white noise. Select one of the five melodies. Play all melodies.		
	60min 45min 30min 15min Set timer to stop playing the selected melody or soothing sound.		