

Go to www.vtechphones.com to register your product for enhanced warranty support and latest Vtech product news.



vtech
Quick start guide

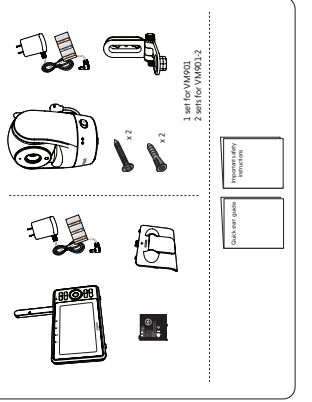
For more support information, visit www.vtechphones.com. In Canada, visit www.vtechphones.ca.

Congratulations
on purchasing your new Vtech product. Before using this HD video monitor, please read the **Important safety instructions**.

What Does HD Video Monitor Do?
Vtech Wi-Fi HD Video Monitor allows you to stay close to your baby when you are on the move. This monitor is Wi-Fi enabled, which lets you stream live video and audio from your baby's room to your mobile phone or tablet. You can also monitor from your smartphone and mobile tablet.

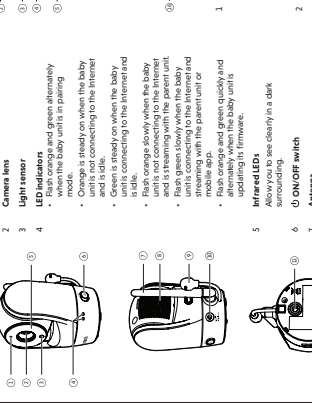
Vtech Wi-Fi HD Video Monitor uses **MYTALK Baby Talk** app to let you know when your baby is crying or when the baby's room temperature is too hot or too cold. The app can be downloaded from the App Store or the Google Play™ Store, directly from your smartphone or mobile tablet.

WHAT'S IN THE BOX



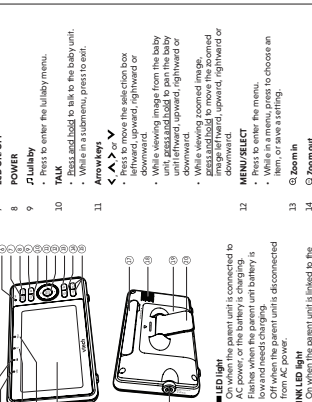
- Requirements**
- For mobile access:
 - MYTALK Baby Talk mobile app
 - Wi-Fi
 - Wi-Fi router:
 - 2.4GHz/802.11b/g/n
 - 1.5 Mbps or 2.5 Mbps (3.0 Mbps or upload bandwidth per baby unit)

OVERVIEW



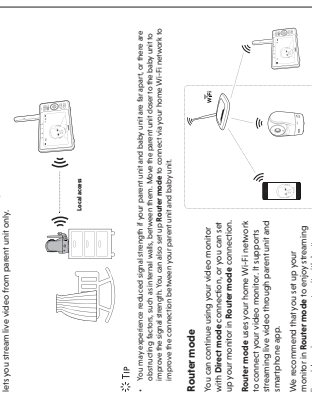
- Microphone
- Camera lens
- Light sensor
- LED indicators:
 - Flashes when the baby unit is not connecting to the Internet and is still.
 - Flashes slowly when the baby unit is not connecting to the Internet and is streaming with the parent unit.
 - Flashes quickly when the baby unit is connecting to the Internet and is still.
 - Flashes when the parent unit is disconnected from the Internet.
- Infrared LEDs:
 - Allows you to see clearly in a dark surrounding.
- ON/OFF switch
- Antenna
- Speaker
- Temperature sensor
- Power jack
- Threaded socket
- Pair/reset button
- LED light
- LED display

Parent unit overview



- Microphone
- LCD ON/OFF
- POWER
- Lullaby
- TALK
- Arrow keys
- Microphone
- POWER
- Lullaby
- TALK
- Arrow keys
- Microphone
- POWER
- Lullaby
- TALK
- Arrow keys

HOW THE SYSTEM WORKS



Direct mode
The parent unit and the baby unit connect to each other via **Direct mode** by default, which allows you to stream live video right out of the box. **Direct mode** connection lets you stream live video from parent unit only.

Router mode
You can continue using your video monitor with **Direct mode** connection, or you can set up your monitor in **Router mode** connection. In **Router mode** connection, you can stream live video through parent unit and smartphone app. In **Router mode** connection, you can also use your mobile phone to stream live video to your parent unit and baby unit.

TECHNICAL SPECIFICATIONS

Category	Specification
Dimensions	Baby unit: 242 x 242 x 141mm
Weight	1.1kg
Power requirement	Minimum power: 5W (5V DC and 1A AC). Actual operating range may vary according to environmental condition at the time of use.
Network requirement	1. Parent unit: none or router. 2. Baby unit: 2.4GHz/802.11b/g/n Wi-Fi network. 3. Parent unit: 2.4GHz/802.11b/g/n Wi-Fi network. 4. Baby unit: 2.4GHz/802.11b/g/n Wi-Fi network.
Operating system	Android 3.0 or iOS 4.0

PROTECT YOUR PRIVACY AND ONLINE SECURITY

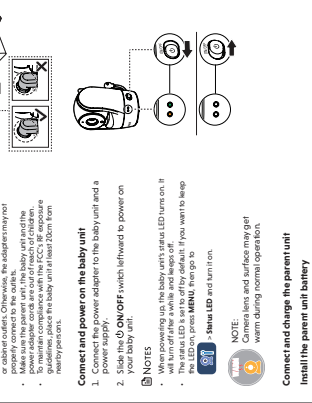
Vtech uses state-of-the-art privacy and security practices to help keep your wireless connection private and secure. We recommend you carefully review and consider the following information:

- Before installing a device, ensure your router's wireless security is secure.
- Change default passwords to unique, strong passwords. A strong password:
 - is at least 10 characters long.
 - does not contain dictionary words or personal information.
 - contains a mix of uppercase letters, lowercase letters, special characters and numbers.
- Keep your device up to date.
- Download security patches from manufacturers as soon as they become available. This helps protect your device from security vulnerabilities that may be discovered in the future.
- If the feature is available, enable automatic updates for future releases.
- Disable Universal Plug and Play (UPnP) on your router.
- UPnP enabled on a router can limit the effectiveness of your firewall by allowing other network devices to open inbound ports without your intervention or approval from you.
- Use a secure network. A secure network is one that uses a secure protocol to connect to the entire network.

For more information on wireless connections and protecting your data, please review the following resources from industry experts:

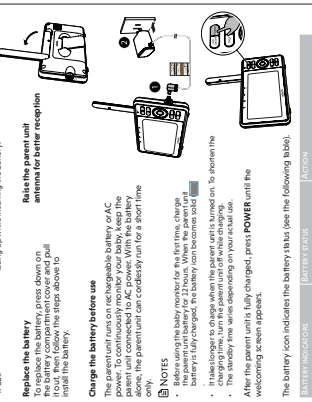
- Federal Communications Commission. Wireless Connections and Bluetooth Security. http://www.fcc.gov/wireless/07_08_09/09-048-fcc-wireless-security
- U.S. Department of Homeland Security. Before You Connect a New Computer to the Internet. <http://www.dhs.gov/secureyourself/08-03-09/08-03-09-secure-yourself>
- Federal Trade Commission. Using IP Cameras Safely. <http://www.ftc.gov/ftc/08-03-09/08-03-09-secure-yourself>
- U.S. Department of Homeland Security. Before You Connect a New Computer to the Internet. <http://www.dhs.gov/secureyourself/08-03-09/08-03-09-secure-yourself>

CONNECT, CHARGE AND POWER ON THE BABY MONITOR



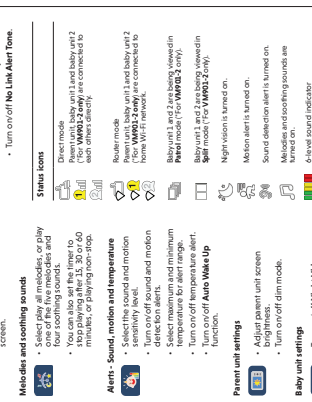
- Connect the baby monitor**
- NOTES**
- Make sure the power adapter supplies with this product.
 - Make sure the parent unit and the baby unit are not connected to the same power source.
 - Connect the power adapter in a vertical or four-point position to the parent unit and the baby unit. Do not use the power adapter in a horizontal position. To avoid the risk of fire, do not use the power adapter with a power source that is not a standard household outlet.
 - When connecting the power adapter to the parent unit, make sure the power adapter cord is not in contact with the baby unit.
 - When connecting the power adapter to the baby unit, make sure the power adapter cord is not in contact with the baby unit.
- Charge and power on the baby unit**
- Connect the power adapter to the baby unit and a power supply.
 - Press the **ON/OFF** switch leftward to power on the baby unit.
- NOTES**
- When powering up, the baby unit status LED turns on. It will turn off after a while and keeps off.
 - When the baby unit is powered on, the LED on the parent unit will blink. If you want to help the baby unit connect to the parent unit, press the **PAIR/RESET** button on the parent unit.
- NOTE:** The battery level and status may not be visible during normal operation.
- Connect and power on the parent unit**
- Install the parent unit battery**
- The parent unit runs on rechargeable battery or AC power. To continuously monitor your baby, the parent unit must be connected to AC power. With the battery used, the parent unit can continuously run for a short time only.
- NOTES**
- Use only the battery supplied with the product.
 - Do not use the battery for a long time, disconnect and remove the battery to prevent possible leakage.

REPLACE THE BATTERY



- Replace the battery**
- Press down on the battery compartment cover and pull it out.
- Make sure the label **THIS SIDE UP** is facing up when inserting the battery.
- NOTE:** Make sure the battery is inserted correctly into the battery compartment.
- Charge the battery before use**
- The parent unit runs on rechargeable battery or AC power. The parent unit can only run on AC power. With the battery used, the parent unit can continuously run for a short time.
- NOTES**
- Before using the baby monitor for the first time, charge the battery for at least 24 hours.
 - When the battery is fully charged, the battery icon becomes solid.
 - Make longer to charge when the parent unit is turned on. To avoid the charging time, turn the parent unit off while charging.
 - The battery life varies depending on your use.
 - When fully charged, press **POWER** on the parent unit to power on the baby monitor.
- The battery icon indicates the battery status (see the following table).
- | BATTERY INDICATOR | BATTERY STATUS | ACTION |
|-------------------|---|---|
| | The battery has very little charge without interruption (about 30 minutes). | Change without interruption (about 30 minutes). |
| | The battery is fully charged. | Use the battery. |
| | The battery icon becomes solid. | Charge the battery, change or connect into AC power when the risk is low. |

PARENT UNIT ICONS



- Main Menu**
- Monitoring mode** (F for VM901-2 only)
- View baby unit 1 or 2 in **Single mode**.
 - View both baby units in **Patrol mode**.
 - View both baby units in **Split mode**.
- Mobile and soothing mode**
- View one of the five melodies and play for 40 minutes, or playing from stop.
 - Stop playing after 15, 30 or 45 minutes.
- Alerts - Sound, motion and temperature**
- Select the sound and motion direction to alert.
 - Turn on/off sound and motion direction to alert.
 - Select maximum and minimum temperature to alert.
 - Turn on/off temperature alert function.
- Parent unit settings**
- Adjust parent unit screen brightness.
 - Turn on/off dim mode.
- Baby unit settings**
- Turn on/off **Night Vision**.
 - Turn on/off baby unit status LED.
 - Turn on/off baby unit speaker volume.
 - Update baby unit security key.
- Status icons**
- Direct mode**: Parent unit and baby unit are connected to each other directly.
 - Router mode**: Parent unit, baby unit and baby unit 2 are connected to each other through home Wi-Fi network.
 - Power mode**: Parent unit is connected to power.
 - Temperature alert**: Temperature alert is turned on.
 - Temperature alert**: Temperature alert is turned on.

