

Go to [www.vtechphones.com](http://www.vtechphones.com) to register to get product news and enhance your baby monitor's features. Visit [www.vtechphones.com](http://www.vtechphones.com) for more product news.



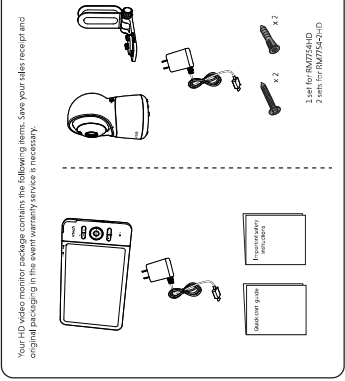
## vtech Quick start guide

For more support information visit [www.vtechphones.com](http://www.vtechphones.com)

**Congratulations!**  
Your new vtech Baby Monitor is here! Please read the **Important safety instructions** that come with your monitor, please read them carefully before using. Visit [www.vtechphones.com](http://www.vtechphones.com) for more support information.

**What does HD Video Monitor do?**  
You can view your baby's video on your smartphone or tablet. You can also view your baby's video on your computer. The vtech Baby Monitor is designed to be used with a smartphone or tablet. You can also view your baby's video on your computer. The vtech Baby Monitor is designed to be used with a smartphone or tablet.

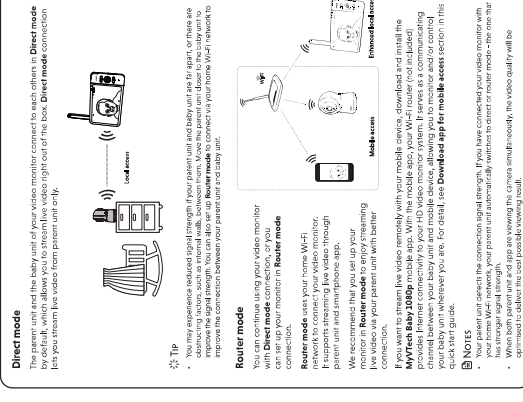
## WHAT'S IN THE BOX



## OVERVIEW

- ### Baby unit overview
- Light sensor
  - Camera lens
  - Microphone
  - Parent unit LED indicator
  - Speaker
  - LED indicator
  - Power button
- ### Parent unit overview
- LINK LED light
  - LED light
  - ON/OFF button
  - PAIR button
  - LED indicator
  - Power button
  - Speaker
  - Antenna
  - Reset button
  - Temperature sensor
  - Slot for wall mounting
  - Power jack

## HOW THE SYSTEM WORKS



**Direct mode**  
The parent unit and the baby unit of your video monitor connect to each other via Direct mode by default, which allows you to stream live video right out of the box. Direct mode connection lets you stream live video from parent unit only.

**Router mode**  
You can continue using your video monitor with Direct mode connection, or you can connect your video monitor to your home Wi-Fi network to connect your video monitor to your home Wi-Fi network. We recommend that you set up your video monitor in Router mode to enjoy streaming video from your parent unit with better connection.

**NOTES**  
If you want to stream live video remotely with your mobile device, download and install the vtech Baby Monitor mobile app. With the mobile app, your Wi-Fi router (not included) stream live video from your baby unit and mobile device, allowing you to monitor and/or control your baby unit wherever you are. For details, see **Download app for mobile access** section in this manual.  
Your parent unit detects the connection signal strength. If you connect your video monitor with your home Wi-Fi network, your parent unit automatically switches to Direct mode connection. When both parent unit and app are viewing the camera simultaneously, the video quality will be optimized to deliver the best possible viewing quality.

## CONNECT, CHARGE AND POWER ON THE BABY MONITOR

- ### Connect the baby monitor
- NOTES**
- The rechargeable battery in the parent unit is built-in.
  - Make sure the parent unit and the baby unit are connected to the same Wi-Fi network.
  - Connect the power adapter to a vertical or floor mount position only. The adapter prongs are not compatible with surge protectors, power strips, extension cords, or other devices. Otherwise, the adapter may not properly connect to the outlet.
  - Make sure the parent unit, the baby unit and the power adapter cord are out of reach of children.
- ### Charge the parent unit battery before use
- The parent unit runs on rechargeable battery or AC power. To continuously monitor your baby, the parent unit must be fully charged. The battery can last for up to 12 hours. When the parent unit battery is fully charged, the battery icon becomes solid.
- NOTES**
- Before using the baby monitor for the first time, charge the parent unit battery for 12 hours. When the parent unit battery is fully charged, the battery icon becomes solid.
  - The display will be dimming during charging.
- ### Power on the baby monitor
- After the parent unit is fully charged, press **POWER** until the welcoming screen appears.

## TECHNICAL SPECIFICATIONS

Category	Specification
Frequency	868 MHz / 900 MHz / 2.4GHz
Channels	11
Power	Class 1 (FCC Part 15.247)
Normal delivery range	Up to 1000 feet (300m)
Parent unit battery	Rechargeable Li-ion battery (3.7V, 1000mAh)
Parent unit battery life	Up to 12 hours (with parent unit fully charged)
Parent unit battery charging time	Approx. 12 hours
Parent unit battery charging location	Vertical or floor mount position only
Parent unit battery charging indicator	Battery icon on the display
Parent unit battery charging status	Parent unit battery icon becomes solid when fully charged
Parent unit battery charging status LED	Parent unit battery icon becomes solid when fully charged
Parent unit battery charging status update	Parent unit battery icon becomes solid when fully charged
Parent unit battery charging status security key	Parent unit battery icon becomes solid when fully charged

## PROTECT YOUR PRIVACY AND ONLINE SECURITY

- Video cameras use video and audio signals. They also use internet to connect to the internet. We recommend you carefully review and consider the following information before using the vtech Baby Monitor.
- Secure your wireless connection is secure.**
- Before installing a device, ensure your router's wireless signal is encrypted by selecting WPA2-PSK (AES) in your router's wireless security menu.
  - Change default settings.
  - Change your wireless router's default wireless network name (SSID) to something unique.
  - Change default passwords to unique, strong passwords. A strong password:
    - Is at least 8 characters long.
    - Contains a mix of uppercase letters, lowercase letters, special characters and numbers.
    - Does not contain dictionary words or personal information.
    - Does not contain common words or phrases.
    - Does not contain words or phrases that are easy to guess.
  - Download security patches from manufacturers as soon as they become available. This helps protect your device from security vulnerabilities.
  - Disable IPv6 in your router's settings.
  - Disable UPnP in your router's settings.
  - Disable DMZ in your router's settings.
  - Disable port forwarding in your router's settings.
  - Disable remote administration in your router's settings.
  - Disable remote access in your router's settings.
  - Disable remote control in your router's settings.
  - Disable remote monitoring in your router's settings.
  - Disable remote management in your router's settings.
  - Disable remote support in your router's settings.
  - Disable remote update in your router's settings.
  - Disable remote upgrade in your router's settings.
  - Disable remote backup in your router's settings.
  - Disable remote restore in your router's settings.
  - Disable remote factory reset in your router's settings.
  - Disable remote firmware update in your router's settings.
  - Disable remote firmware upgrade in your router's settings.
  - Disable remote firmware download in your router's settings.
  - Disable remote firmware installation in your router's settings.
  - Disable remote firmware uninstallation in your router's settings.
  - Disable remote firmware deletion in your router's settings.
  - Disable remote firmware backup in your router's settings.
  - Disable remote firmware restore in your router's settings.
  - Disable remote firmware recovery in your router's settings.
  - Disable remote firmware update in your router's settings.
  - Disable remote firmware upgrade in your router's settings.
  - Disable remote firmware download in your router's settings.
  - Disable remote firmware installation in your router's settings.
  - Disable remote firmware uninstallation in your router's settings.
  - Disable remote firmware deletion in your router's settings.
  - Disable remote firmware backup in your router's settings.
  - Disable remote firmware restore in your router's settings.
  - Disable remote firmware recovery in your router's settings.

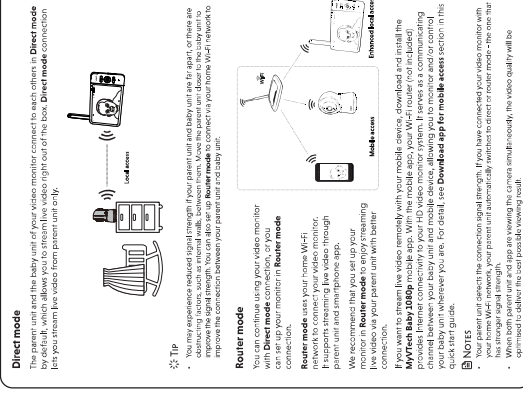
## DISCLAIMER AND LIMITATION OF LIABILITY

Vtech Communications, Inc. and its subsidiaries are not responsible for any damage to your property or personal injury resulting from the use of this product. Vtech Communications, Inc. and its suppliers assume no liability for any damage to your property or personal injury resulting from the use of this product. Vtech Communications, Inc. and its suppliers assume no liability for any damage to your property or personal injury resulting from the use of this product. Vtech Communications, Inc. and its suppliers assume no liability for any damage to your property or personal injury resulting from the use of this product.

## PARENT UNIT ICONS

- ### Main Menu
- Monitoring mode (F for RM7754-2HD only)
  - View baby unit 1 or 2 in Single mode.
  - View both baby units in Paired mode.
  - View both baby units in \$PAP mode.
- ### High light
- Select color 1, 2 or 3.
  - Turn off night light.
- ### Media codes and soothing sounds
- Select play all melodies, or play one of the five melodies and sounds.
  - You can also set the timer to stop playing after 15, 30, or 45 minutes.
- ### Alerts - Sound, motion and temperature
- Select the sound and motion sensitivity level.
  - Turn on/off sound and motion alerts.
  - Select maximum and minimum temperature for alert range.
  - Turn on/off temperature alert.
  - Turn on/off Auto Wake Up.
- ### Parent unit settings
- Adjust parent unit screen brightness.
  - Turn on/off dim mode.
- ### Baby unit settings
- Turn on/off Night Vision.
  - Turn on/off baby unit status LED.
  - Adjust baby unit speaker volume.
  - Update baby unit's security key.

## RAISE THE PARENT UNIT ANTENNA FOR BETTER RECEPTION



The battery icon indicates the battery status (see the following table).

Parent unit battery status	Action
Parent unit battery icon is solid.	Change without interruption (about 12 hours).
Parent unit battery icon is flashing.	Change and may take 30 minutes.
Parent unit battery icon is empty.	To keep the battery charged, connect to AC power when not in use.

## CONNECT, CHARGE AND POWER ON THE BABY MONITOR

- ### Connect the baby monitor
- NOTES**
- The rechargeable battery in the parent unit is built-in.
  - Make sure the parent unit and the baby unit are connected to the same Wi-Fi network.
  - Connect the power adapter to a vertical or floor mount position only. The adapter prongs are not compatible with surge protectors, power strips, extension cords, or other devices. Otherwise, the adapter may not properly connect to the outlet.
  - Make sure the parent unit, the baby unit and the power adapter cord are out of reach of children.
- ### Charge the parent unit battery before use
- The parent unit runs on rechargeable battery or AC power. To continuously monitor your baby, the parent unit must be fully charged. The battery can last for up to 12 hours. When the parent unit battery is fully charged, the battery icon becomes solid.
- NOTES**
- Before using the baby monitor for the first time, charge the parent unit battery for 12 hours. When the parent unit battery is fully charged, the battery icon becomes solid.
  - The display will be dimming during charging.
- ### Power on the baby monitor
- After the parent unit is fully charged, press **POWER** until the welcoming screen appears.

## TECHNICAL SPECIFICATIONS

Category	Specification
Frequency	868 MHz / 900 MHz / 2.4GHz
Channels	11
Power	Class 1 (FCC Part 15.247)
Normal delivery range	Up to 1000 feet (300m)
Parent unit battery	Rechargeable Li-ion battery (3.7V, 1000mAh)
Parent unit battery life	Up to 12 hours (with parent unit fully charged)
Parent unit battery charging time	Approx. 12 hours
Parent unit battery charging location	Vertical or floor mount position only
Parent unit battery charging indicator	Battery icon on the display
Parent unit battery charging status	Parent unit battery icon becomes solid when fully charged
Parent unit battery charging status LED	Parent unit battery icon becomes solid when fully charged
Parent unit battery charging status update	Parent unit battery icon becomes solid when fully charged
Parent unit battery charging status security key	Parent unit battery icon becomes solid when fully charged

