



# **Appendix A**

## **Detailed System Check Results**

1. System Performance Check
-----------------------------

System Performance Check 2450 MHz Head
--

Test Laboratory: SGS-SAR Lab

## System Performance Check 2450MHz Head

**DUT: D2450V2; Type: D2450V2; Serial: 869**

Communication System: UID 0, CW; Frequency: 2450 MHz; Duty Cycle: 1:1

Medium: HSL2450; Medium parameters used:  $f = 2450$  MHz;  $\sigma = 1.798$  S/m;  $\epsilon_r = 38.222$ ;  $\rho = 1000$  kg/m<sup>3</sup>

Phantom section: Flat Section

DASY 5 Configuration:

- Probe: EX3DV4 - SN3793; ConvF(6.93, 6.93, 6.93); Calibrated: 2019-03-25;
- Sensor-Surface: 1.4mm (Mechanical Surface Detection)
- Electronics: DAE4 Sn871; Calibrated: 2019-06-27
- Phantom: SAM 7; Type: SAM; Serial: 1027
- DASY52 52.8.8(1222); SEMCAD X 14.6.10(7331)

**Body/d=10mm, Pin=250mW/Area Scan (9x15x1):** Measurement grid: dx=12mm, dy=12mm  
Maximum value of SAR (measured) = 20.4 W/kg

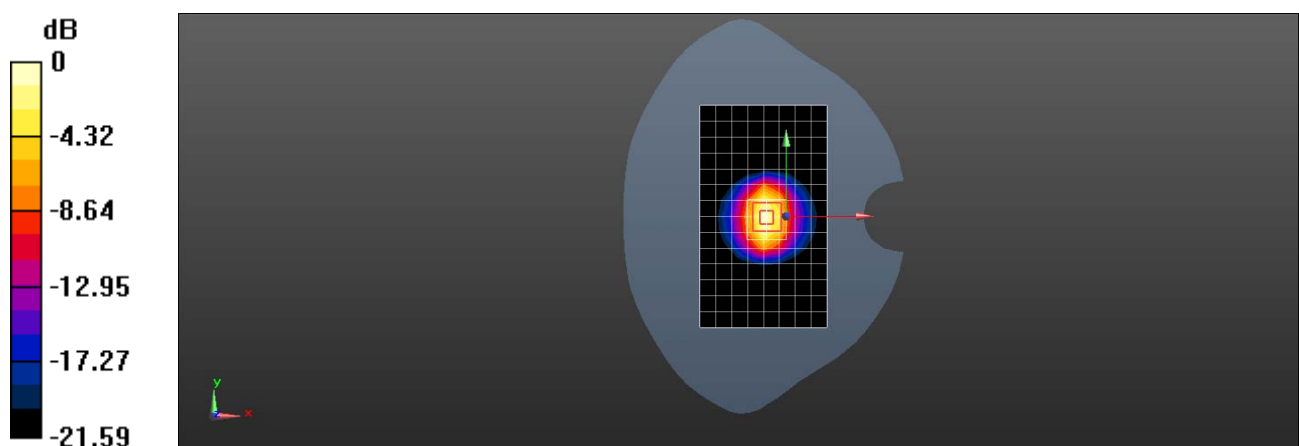
**Body/d=10mm, Pin=250mW/Zoom Scan (7x7x7)/Cube 0:** Measurement grid: dx=5mm, dy=5mm, dz=5mm

Reference Value = 90.09 V/m; Power Drift = -0.21 dB

Peak SAR (extrapolated) = 25.5 W/kg

**SAR(1 g) = 12.9 W/kg; SAR(10 g) = 6.05 W/kg**

Maximum value of SAR (measured) = 21.0 W/kg



0 dB = 21.0 W/kg = 13.22 dBW/kg