



APPENDIX A

EMISSIONS RADIATED AND CONDUCTED MEASUREMENTS

CLIENT:	WIRELESS, INC.
PRODUCT:	<i>N2-X ETHERNET EXTENDER (BRIDGE)</i>
REPORT FILE:	9080501A
FILE NAME:	APPENDIX A
DATE:	9/12/99
SUBMITTED BY:	ELECTRONIC COMPLIANCE LABORATORIES, INC. EC LABS, INC.



EV9N2X5-3S1-16B
WIRELESS, INC.

ELECTRONIC COMPLIANCE LABORATORIES, INC.
1249 BIRCHWOOD AVE.
SUNNYVALE, CA 94089

RADIATED EMISSIONS

FREQUENCY RANGE: 30MHZ-1000MHZ

10 METER OPEN SITE
SITE CALIBRATED: JUNE 1998

GOVERNMENT AGENCY AND LIMIT: FCC CLASS A

TEST	TEST	ACTUAL	CLASS A	VERSUS	TABLE	ANTENNA	POLAR-
FREQ	dBuV	dBuV/m	LIMIT	A LIMIT	DEGREES	HEIGHT	IZATION

**NO EMISSIONS FOUND ABOVE NOISE FLOOR FOR BOTH VERTICAL AND HORIZONTAL
POLARIZATIONS**

Number of readings over limit 0

Number of readings within 6 or less of limit: 0

ELECTRONIC COMPLIANCE LABORATORIES, INC.
1249 BIRCHWOOD AVE.
SUNNYVALE, CA 94089

CONDUCTED EMISSIONS

FREQUENCY RANGE: 450KHz-30MHz

10 METER OPEN SITE
SITE CALIBRATED: JUNE 1998

GOVERNMENT AGENCY AND LIMIT: FCC CLASS A

NOTES: NO READINGS OVER LIMIT


TEST FREQ	TEST dBuV	CLASS A LIMIT	VERSUS A LIMIT	CONDUCTOR	DETECTOR TYPE*
0.890	6.6	60.0	-53.4	LINE	PK
13.970	5.1	69.5	-64.4	LINE	PK
23.870	3.3	69.5	-66.2	LINE	PK
15.890	3.4	69.5	-66.1	LINE	PK
0.970	9.7	60.0	-50.3	NEUTRAL	PK
1.710	6.2	69.5	-63.3	NEUTRAL	PK
13.970	6.7	69.5	-62.8	NEUTRAL	PK
16.260	4.8	69.5	-64.7	NEUTRAL	PK
25.050	38.4	69.5	-31.1	NEUTRAL	PK
24.240	37.5	69.5	-32.0	NEUTRAL	PK
24.680	35.7	69.5	-33.8	NEUTRAL	PK
6.060	35.9	69.5	-33.6	NEUTRAL	PK
6.140	35.6	69.5	-33.9	LINE	PK
24.310	36.2	69.5	-33.3	LINE	PK
0.450	34.1	60.0	-25.9	LINE	PK
25.120	40.0	69.5	-29.5	LINE	PK

*QP= QUASI-PEAK P= PEAK

QP = QUASI-PEAK

PK = PEAK

NOTE: IGNORE PEAK READINGS WHEN QUASI-PEAK READING EXISTS

 13:54:20 JUL 30, 1999
NEGATIVE CONDUCTOR 24VDC

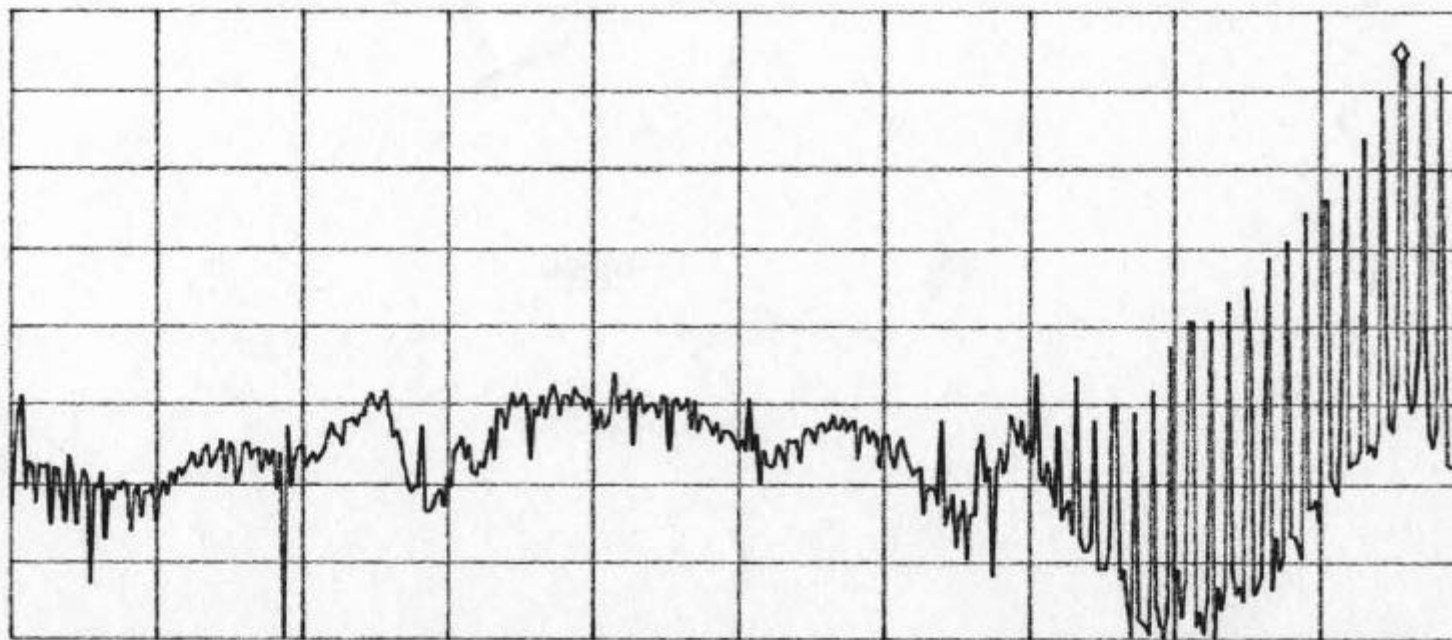
ADRS / OPERATION

ACTV DET: PEAK
MEAS DET: PEAK QP AVG
MKR 20.81 MHz
53.13 dB μ V

LOG REF 56.5 dB μ V

5
dB/
ATN
10 dB

VA SB
SC FC
ACORR




START 450 kHz

IF BW 9.0 kHz

AVG BW 30 kHz

STOP 30.15 MHz

SWP 2.47 sec

 13:38:59 JUL 30, 1999
POSITIVE CONDUCTOR 24VDC

ACTV DET: PEAK
MEAS DET: PEAK QP AVG
MKR 29.48 MHz
54.73 dB μ V

LOG REF 56.5 dB μ V

5
dB/
ATN
10 dB

VA SB
SC FC
ACORR

START 600 kHz
IF BW 9.0 kHz
AUG BW 30 kHz
STOP 30.15 MHz
SWP 2.46 sec

