

REPORT OF MEASUREMENTS
GENERAL

Applicant: Detection Systems, Inc.

Device: 10.525 GHz Field Disturbance Sensor

Model: OD850

Serial Number: N/A

FCC ID: ESVOD850

Input Power Requirements: 10 to 15 VDC, 22 mA (12 VDC Nominal)

Rule Section: Part 15, Subpart C, Section 15.245

TEST METHODS PERFORMED

15.245 (b) Radiated Emissions, Fundamental

15.245 (b)(1) Radiated Emissions, Harmonics

15.245 (b)(3) Radiated Emissions, Band Edges

15.245 (b)(3) Radiated Emissions, Spurious Emissions, 30 MHz to 52.625 GHz

TEST RESULTS

15.245 (a) The device is an intentional radiator used as a field disturbance sensor.

15.245 (b) The device operates within the 10.500 to 10.550 GHz frequency band.
The field strength of the fundamental emission did not exceed 2500 millivolts per meter, average.

15.245 (b)(1) The device does not produce harmonic emissions below 17.7 GHz.

15.245 (b)(1)(i) The device is intended to be used only within buildings and the field strength of harmonic emissions did not exceed 25.0 millivolts per meter.

15.245 (b)(2) All radiated emissions measurements were extrapolated to the specified 3 meter test distance.



Retlif Testing Laboratories

Test Report Number R-9299-1
FCC ID: ESVOD850

- 15.245 (b)(3) The emissions radiated outside of the specified frequency band of 10.500 to 10.550 GHz did not exceed the general radiated emission limits of 15.209.
- 15.245 (b)(4) The requirements of 15.35 for averaging pulsed emissions and limiting peak emissions were met.

NOTES

- 15.31 (a)(b) All measurements were made in accordance with ANSI C63.4:1992.
- 15.31 (c) The device does not use swept frequency techniques.
- 15.31 (d) All testing was performed on Retlif Testing Laboratories Ronkonkoma, NY test site which has been listed with the FCC.
- 15.31 (e) Variation of the radiated signal level of the fundamental frequency component was performed with the supply voltage varied between 85 and 115% of nominal (12 VDC). This was also performed at 85% of the minimum and 115% of the maximum rated input voltage range.
- 15.31 (f)(1) Where testing was performed at distances other than the specified test distance, the obtained readings were extrapolated to the specified test distance using an inverse linear-distance extrapolation factor (20dB / decade) for measurements between 30 MHz and 40 GHz.
- 15.31 (f)(5) The device was rotated 360° in order to maximize the radiated emissions. The maximum field strength observed has been reported.
- 15.31 (g) All consumer accessible controls were adjusted in order to maximize emissions (MW Range Control).
A one meter length of unshielded twisted pair wire was connected to each of the relay and tamper outputs.
- 15.31 (m) The device operates at a single frequency of 10.525 GHz.
- 15.31 (o) All emissions within 20 dB of the specified limits have been reported unless otherwise stated.
- 15.33 (a)(2) The device operates above 10 and below 30 GHz at a frequency of 10.525 GHz. Therefore radiated emissions measurements were made from 30 MHz to 52.625 GHz, the fifth harmonic.



Retlif Testing Laboratories

Test Report Number R-9299-1
FCC ID: ESVOD850

DUTY CYCLE

Drive pulses are applied to Q99 via Q1 and are twenty microsecond (20 µSec) on time and four hundred and eighty microseconds (480 µSec) off time. This yields a duty cycle of 4%, 20 µSec divided by 500 µSec. This duty cycle was applied to the obtained peak readings in order to determine the average value of the emissions.

TEST DISTANCES

In order to obtain adequate system sensitivity at the harmonic frequencies of interest, it was necessary to perform certain measurements at a distance less than 3 meters. Care was taken to ensure that all measurements were taken in the far field region. The antenna was determined to be in the far field IFF:

$$d \geq 2 D^2 / \lambda$$

Where: d = Test Distance
 D = Largest Antenna Length
 λ = Wavelength at the Frequency of Interest

Solving for d yields the minimum test distances shown in the table below. Also shown is the actual test distance utilized.

Frequency GHz	Minimum Test Distance Meters	Actual Test Distance Meters
10.525	2.7	3
21.050	1.5	2
31.575	1.0	1
42.100	0.5	1
52.625	0.7	1



Retlif Testing Laboratories

Test Report Number R-9299-1
FCC ID: ESVOD850

SPECTRUM ANALYZER DESENSITIZATION CONSIDERATIONS

Due to the nature of the emissions being measured, care was taken to ensure that the resolution bandwidth of the spectrum analyzer was adequate to provide accurate peak field strength measurements. The following formula was utilized:

$$\text{Pulse Desensitization } (\delta) = 20 \log (\text{Pulsewidth} * \text{bandwidth} * 1.5)$$

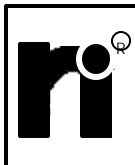
Setting the above equal to zero and utilizing the 20.0 microsecond pulsewidth yields a minimum required bandwidth of 33.3 kHz. The 1 MHz bandwidth specified in ANSI C63.4 was utilized for all fundamental and harmonic measurements.



Retlif Testing Laboratories

Test Report Number R-9299-1
FCC ID: ESVOD850

TEST DATA
RADIATED EMISSIONS, FUNDAMENTAL
15.245 (b)



Retlif Testing Laboratories

Test Report Number R-9299-1
FCC ID: ESVOD850

TEST SAMPLE: 10.525 GHz Field Disturbance Sensor

FCC ID: ESVOD850

APPLICANT: Detection Systems, Inc.

TEST METHOD: Radiated Emissions, Fundamental

SPECIFICATION: FCC Part 15, Section 15.245 (b)

PERFORMED BY: P.Lananna

DATE: December 27, 2001

Field Strength of Fundamental

Frequency GHz	Antenna Position H / V	EUT Orientatio n X / Y / Z	Meter Reading dBuV	Antenna Factor +dB	Corrected Reading dBuV/m		Converted Reading mV/m	Limit at 3 Meters mV/m
10.525	H-1.0	X	85.1	30.0	115.1		568.8	2,500
	V-1.2	X	75.8	30.0	105.8		195.0	2,500
	H-1.2	Y	75.1	30.0	105.1		179.9	2,500
	V-1.1	Y	77.3	30.0	107.3		231.7	2,500
	H-1.1	Z	73.8	30.0	103.8		154.9	2,500
	V-1.1	Z	81.1	30.0	111.1		358.9	2,500

Detector Function: Peak
Test Distance: 3 Meters
Resolution Bandwidth: 1 MHz
Video Bandwidth: 3 MHz



Retlif Testing Laboratories

Test Report Number R-9299-1
FCC ID: ESVOD850

TEST SAMPLE: 10.525 GHz Field Disturbance Sensor

FCC ID: ESVOD850

APPLICANT: Detection Systems, Inc.

TEST METHOD: Radiated Emissions, Fundamental, Input Voltage Variation

SPECIFICATION: FCC Part 15, Section 15.245 (b), 15.31(e)

PERFORMED BY: P.Lananna

DATE: December 27, 2001

Input Voltage Variation

Frequency	Test Voltage	Test Voltage	Meter Reading	Antenna Factor	Corrected Reading		Converted Reading	Limit at 3 Meters
GHz	% Nominal	VDC	dBuV	+dB	dBuV/m		mV/m	mV/m
10.525	85% (Vmin)	8.5	85.1	30.0	115.1		568.8	2,500
	85% (Vnom)	10.2	85.1	30.0	115.1		568.8	2,500
	100% (Vnom)	12.0	85.1	30.0	115.1		568.8	2,500
	115% (Vnom)	13.8	85.1	30.0	115.1		568.8	2,500
	115% (Vmax)	17.25	85.1	30.0	115.1		568.8	2,500

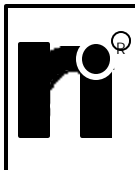
Detector Function: Peak
Test Distance: 3 Meters
Resolution Bandwidth: 1 MHz
Video Bandwidth: 3 MHz



Retlif Testing Laboratories

Test Report Number R-9299-1
FCC ID: ESVOD850

TEST DATA
RADIATED EMISSIONS, HARMONICS
15.245 (b)(1)



Retlif Testing Laboratories

Test Report Number R-9299-1
FCC ID: ESVOD850

TEST SAMPLE: 10.525 GHz Field Disturbance Sensor

FCC ID: ESVOD850

APPLICANT: Detection Systems, Inc.

TEST METHOD: Radiated Emissions, Harmonics

SPECIFICATION: FCC Part 15, Section 15.245 (b)(1)

PERFORMED BY: P. Lananna

DATE: December 27, 2001

Field Strength of Harmonics - Peak

Frequency GHz	Antenna Position & Distance H / V	EUT Orientatio n X / Y/ Z	Meter Reading dBuV	Antenna Factor dB	Test Distance Correction dB	Corrected Reading dBuV/m	Converted Reading uV/m	Peak Limit at 3 Meters uV/m
21.1	H - 1.0	X	36.2	20.7	-3.5	53.4	467.7*	250000.0
	V - 1.0	X	36.2	20.7	-3.5	53.4	467.7*	
	H - 1.0	Y	36.2	20.7	-3.5	53.4	467.7*	
	V - 1.0	Y	36.2	20.7	-3.5	53.4	467.7*	
	H - 1.0	Z	36.2	20.7	-3.5	53.4	467.7*	
	V - 1.0	Z	36.2	20.7	-3.5	53.4	467.7*	
31.6	H - 1.1	X	55.8	35.8	-9.5	82.1	12735.0	
	V - 1.0	X	53.2	35.8	-9.5	79.5	9440.6	
	H - 1.1	Y	50.3	35.8	-9.5	76.6	6760.8	
	V - 1.0	Y	54.5	35.8	-9.5	80.8	10964.8	
	H - 1.0	Z	56.0	35.8	-9.5	82.3	13031.7	
	V - 1.1	Z	50.6	35.8	-9.5	76.9	6998.4	



Retlif Testing Laboratories

Test Report Number R-9299-1
FCC ID: ESVOD850

42.1	H - 1.0	X	36.6	39.9	-9.5	67.0	2238.7*	
	V - 1.0	X	36.6	39.9	-9.5	67.0	2238.7*	
	H - 1.0	Y	36.6	39.9	-9.5	67.0	2238.7*	250000.0
	V - 1.0	Y	36.6	39.9	-9.5	67.0	2238.7*	250000.0
	H - 1.0	Z	36.6	39.9	-9.5	67.0	2238.7*	
	V - 1.0	Z	36.6	39.9	-9.5	67.0	2238.7*	
52.6	H - 1.0	X	35.6	41.1	-9.5	61.7	1216.2*	
	V - 1.0	X	35.6	41.1	-9.5	61.7	1216.2*	
	H - 1.0	Y	35.6	41.1	-9.5	61.7	1216.2*	
	V - 1.0	Y	35.6	41.1	-9.5	61.7	1216.2*	
	H - 1.0	Z	35.6	41.1	-9.5	61.7	1216.2*	
	V - 1.0	Z	35.6	41.1	-9.5	61.7	1216.2*	250000.0

* Denotes Minimum Sensitivity of Measurement System.

Field Strength of Harmonics - Average

Frequency GHz	Antenna Position H / V	EUT Orientatio n X / Y/ Z	Peak Reading uV/m	Duty Cycle %		Average Reading uV/m	Limit at 3 Meters uV/m
21.050	H - 1.0	X	467.7	4.0		18.7*	25,000
	V - 1.0	X	467.7	4.0		18.7*	
	H - 1.0	Y	467.7	4.0		18.7*	
	V - 1.0	Y	467.7	4.0		18.7*	
	H - 1.0	Z	467.7	4.0		18.7*	



Retlif Testing Laboratories

Test Report Number R-9299-1
FCC ID: ESVOD850

	V - 1.0	Z	467.7	4.0		18.7*	
31.575	H - 1.1	X	12735.0	4.0		509.4	
	V - 1.0	X	9440.6	4.0		377.6	
	H - 1.1	Y	6760.8	4.0		270.4	
	V - 1.0	Y	10964.8	4.0		438.6	25,000
	H - 1.0	Z	13031.7	4.0		521.3	25,000
	V - 1.1	Z	6998.4	4.0		279.9	
42.100	H - 1.0	X	2238.7	4.0		89.5*	
	V - 1.0	X	2238.7	4.0		89.5*	
	H - 1.0	Y	2238.7	4.0		89.5*	
	V - 1.0	Y	2238.7	4.0		89.5*	
	H - 1.0	Z	2238.7	4.0		89.5*	
	V - 1.0	Z	2238.7	4.0		89.5*	
52.625	H - 1.0	X	1216.2	4.0		48.6*	
	V - 1.0	X	1216.2	4.0		48.6*	
	H - 1.0	Y	1216.2	4.0		48.6*	
	V - 1.0	Y	1216.2	4.0		48.6*	
	H - 1.0	Z	1216.2	4.0		48.6*	
	V - 1.0	Z	1216.2	4.0		48.6*	25,000

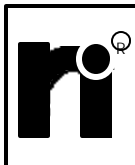
Detector Function: Peak / Duty Cycle Applied to Obtain Average Levels
 Test Distance: As Specified for each frequency
 Resolution Bandwidth: 1 MHz
 Video Bandwidth: 3 MHz



Retlif Testing Laboratories

Test Report Number R-9299-1
 FCC ID: ESVOD850

TEST DATA
RADIATED EMISSIONS, BAND EDGES
15.245 (b)(3)



Retlif Testing Laboratories

Test Report Number R-9299-1
FCC ID: ESVOD850

TEST SAMPLE: 10.525 GHz Field Disturbance Sensor
FCC ID: ESVOD850
APPLICANT: Detection Systems, Inc.
TEST METHOD: Radiated Emissions, Band Edges
SPECIFICATION: FCC Part 15, Section 15.245 (b)(3)
PERFORMED BY: P. Lananna
DATE: December 27, 2001

The emission at the Lower (10.5GHz) and Upper (10.55GHz) Band edge were attenuated by 50dB. See attached plot.



Retlif Testing Laboratories

Test Report Number R-9299-1
FCC ID: ESVOD850

TEST DATA
OCCUPIED BANDWIDTH
15.245 (b)



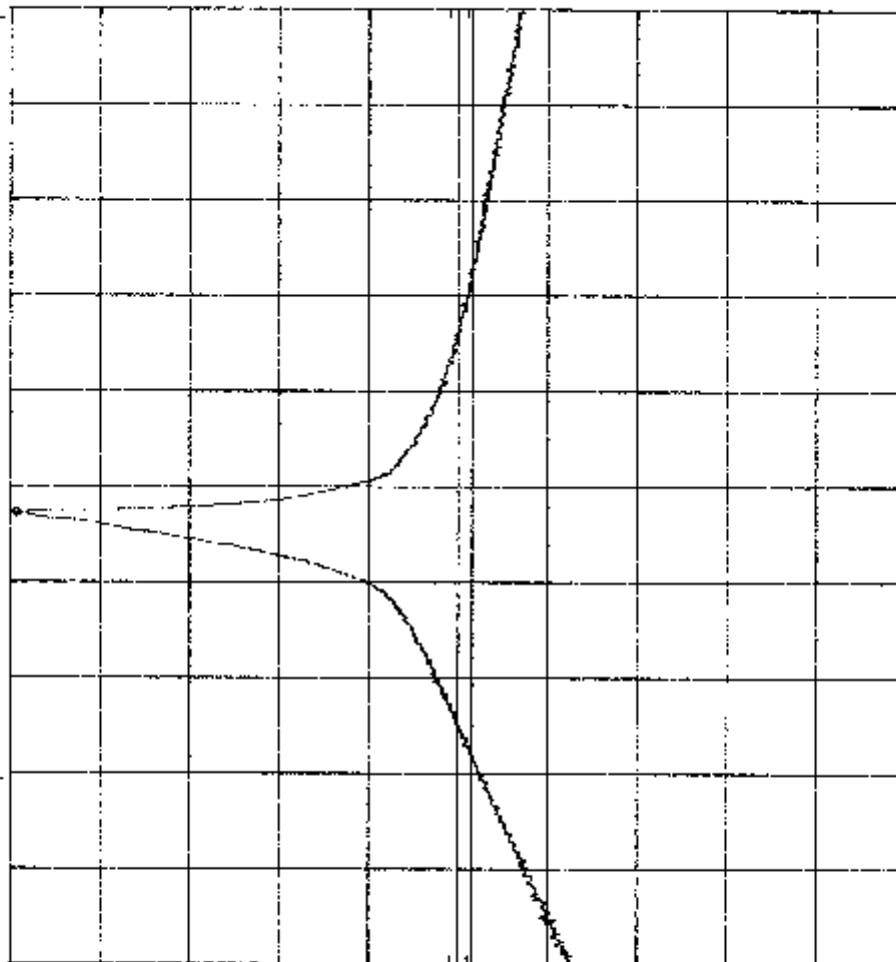
Retlif Testing Laboratories

Test Report Number R-9299-1
FCC ID: ESVOD850

R-9299- Detection Systems 00850 Occ.Bw. MKR 10.523 60 GHz
 REF 105.3 dBμV ATTN 10 dB 104.70 dBμV

10 dB/

DL
 53.7
 dBμV



START 10.500 0 GHz RES BW 100 kHz
 STOP 10.550 0 GHz SWP 20.0 msec
 VBW 300 kHz

Detection Systems, Inc.
 10000 S. 10th Ave. Suite 100
 Denver, CO 80231
 Tel: 303.751.1000
 Fax: 303.751.1001
 E-mail: info@dsi.com
 Web: www.detection.com



Retlif Testing Laboratories

Report No. R-9299-



Retlif Testing Laboratories

Test Report Number R-9299-1

FCC ID: ESVOD850

TEST DATA
RADIATED EMISSIONS, SPURIOUS
15.245 (b)(3)



Retlif Testing Laboratories

Test Report Number R-9299-1
FCC ID: ESVOD850

TEST SAMPLE: 10.525 GHz Field Disturbance Sensor

FCC ID: ESVOD850

APPLICANT: Detection Systems, Inc.

TEST METHOD: Spurious Emissions, 30 MHZ to 52.625 GHz

SPECIFICATION: FCC Part 15, Section 15.245 (b)(3)

PERFORMED BY: P.Lananna

DATE: December 27, 2001

Frequency GHz	Antenna Distance Meters		Meter Reading dBuV	Antenna Factor +dB	Test Distance Correction -dB	Corrected Reading dBuV/m	Converted Reading uV/m	Limit at 3 Meters uV/m
0.030	3		-					100 QP
0.088	3		-					100 / 150
0.216	3		-					150 / 200
0.960	3		-					200 / 500
1.0	3		-					500
1.0	1		-					5000 Pk 500 Ave
52.625	1		-					5000 Pk 500 Ave

The frequency range was scanned from 30 MHZ to 52.625 GHz. No spurious emissions were observed within 20 dB of the specified limit in the 30 MHZ to 40 GHz range. No spurious emissions were observed within 10 dB of the specified limit above 40 GHz.

	For F < 1 GHz	For F > 1 GHz
Resolution Bandwidth:	100 kHz	1 MHz
Video Bandwidth:	300 kHz	3 MHz
Detector:	Quasi-Peak	Peak / Average



Retlif Testing Laboratories

Test Report Number R-9299-1
FCC ID: ESVOD850

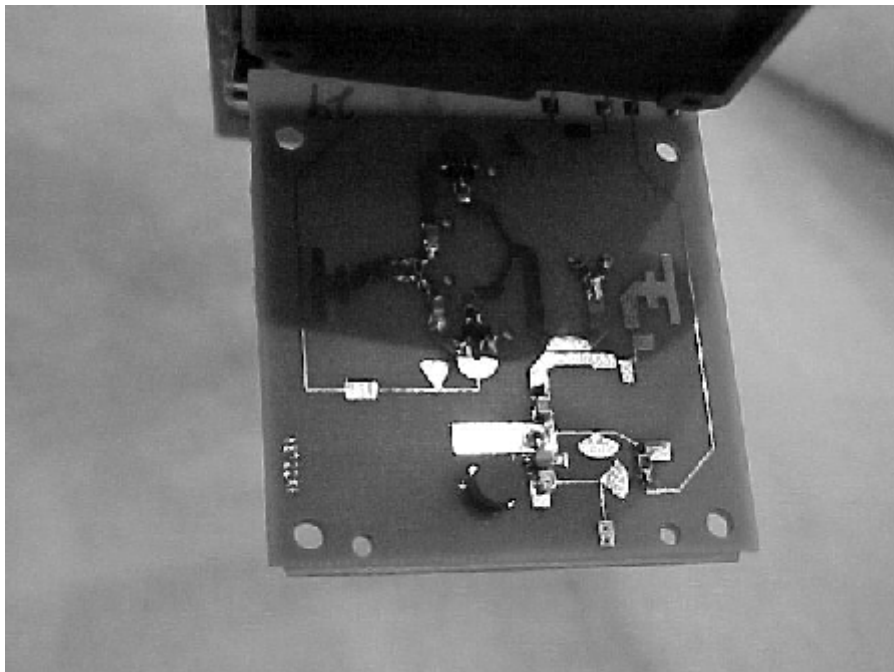
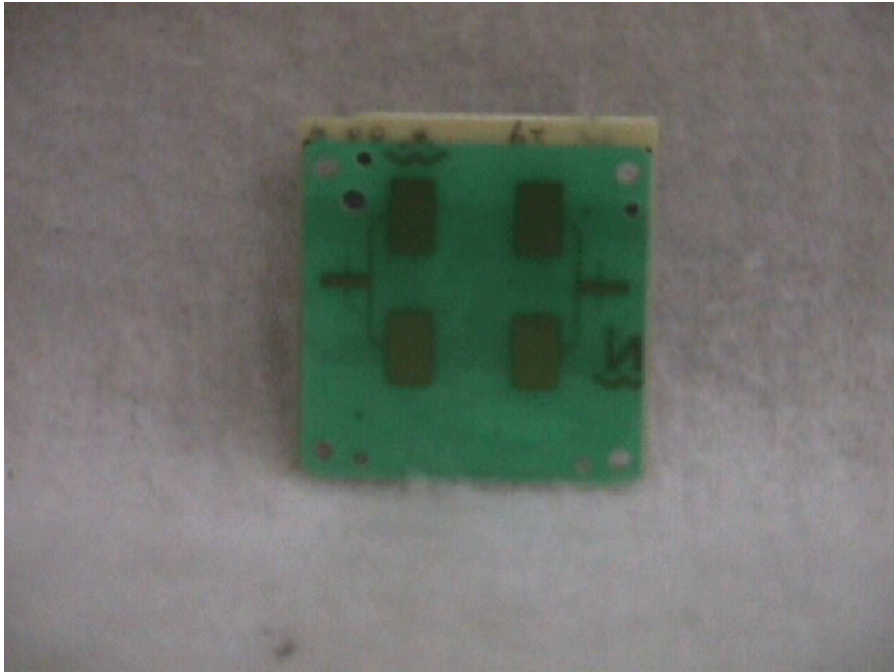
TEST SETUP PHOTOGRAPH



Retlif Testing Laboratories

Test Report Number R-9299-1
FCC ID: ESVOD850

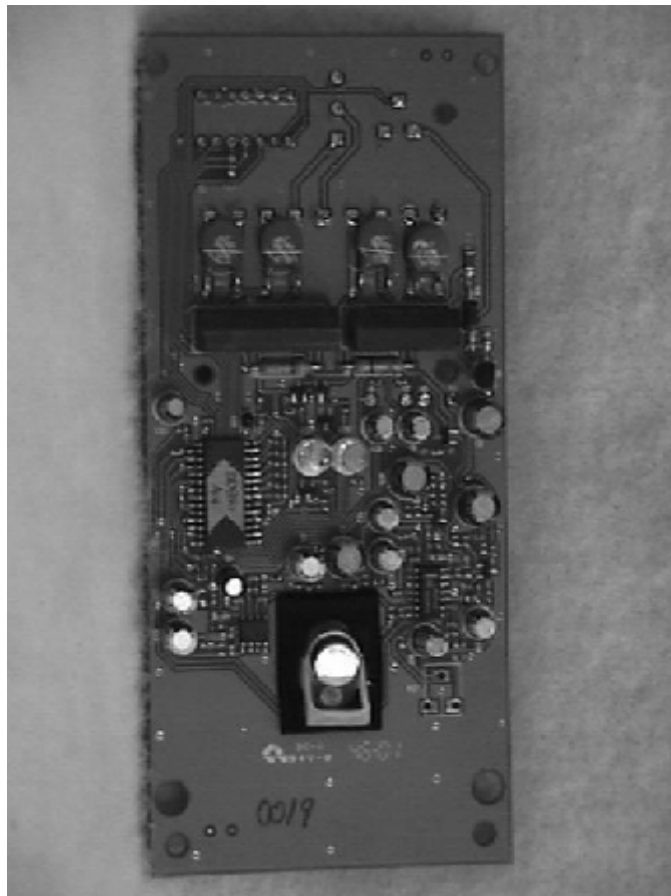
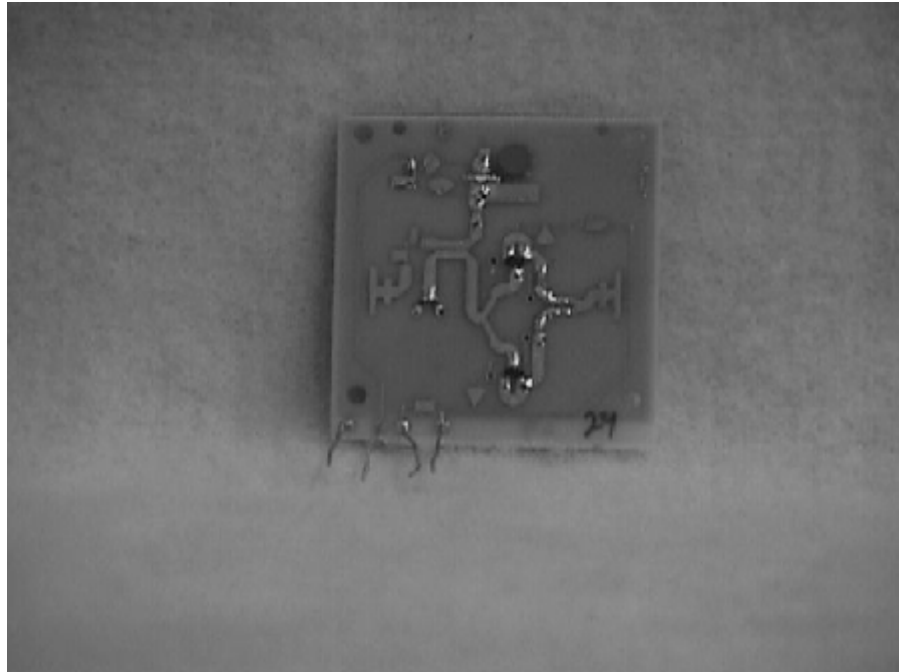
EQUIPMENT PHOTOGRAPHS



Retlif Testing Laboratories

Test Report Number R-9299-1
FCC ID: ESVOD850

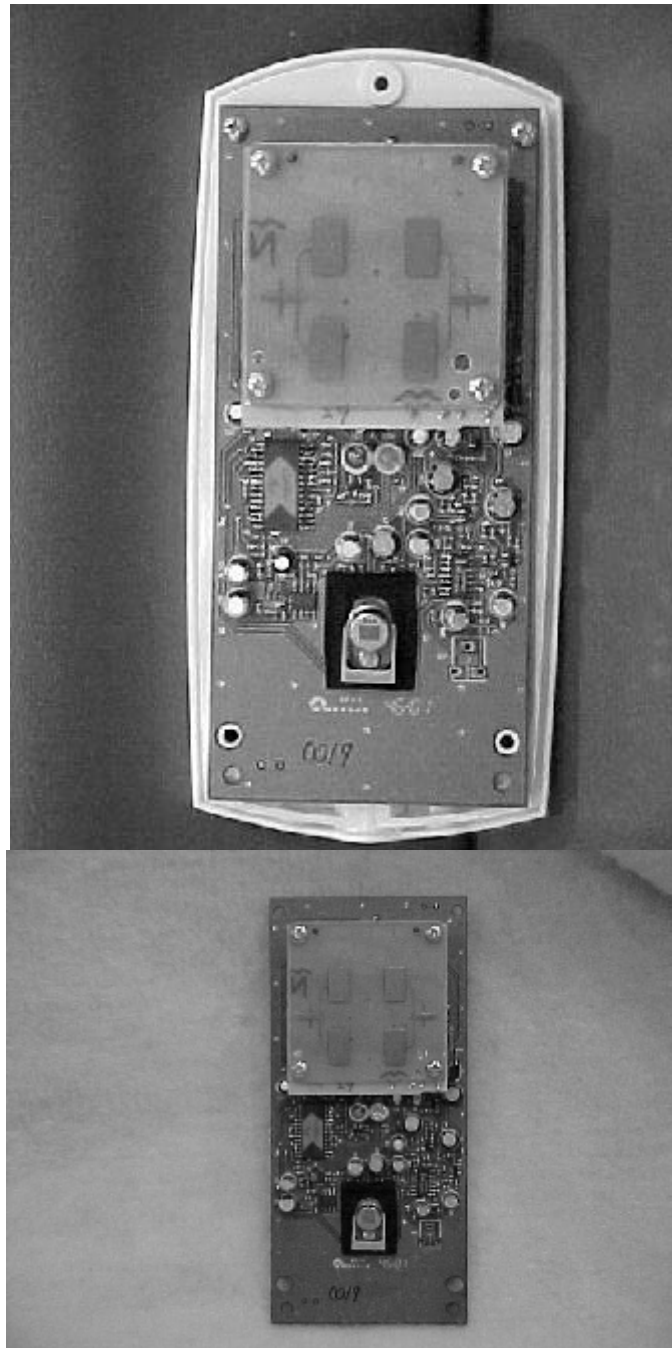
EQUIPMENT PHOTOGRAPHS



Retlif Testing Laboratories

Test Report Number R-9299-1
FCC ID: ESVOD850

EQUIPMENT PHOTOGRAPHS



Retlif Testing Laboratories

Test Report Number R-9299-1
FCC ID: ESVOD850

SETUP PHOTOGRAPHS



Retlif Testing Laboratories

Test Report Number R-9299-1
FCC ID: ESVOD850

EQUIPMENT LIST

FCC 15.245 Compliance Testing

EN	Type	Manufacturer	Description	Model No.	Cal Date	Due Date
066	High Gain Horn Antenna	Microlab/FXR	8.2 GHz - 12.4 GHz	X638A	10/10/2001	10/10/2002
128C	Double Ridge Guide	Eaton Corporation	1 GHz - 18 GHz	96001	09/21/2001	09/21/2002
129F	High Gain Horn Antenna	Microlab/FXR	18 GHz - 26.5 GHz	K638A	09/21/2001	09/21/2002
129G	High Gain Horn Antenna	Microlab/FXR	26.5 GHz - 40 GHz	U638A	09/21/2001	09/21/2002
141	Spectrum Analyzer	Hewlett Packard	100 Hz - 40 GHz	8566B	07/02/2001	01/16/2002
141A	Graphics Plotter	Hewlett Packard	N/A	7470A	03/05/2001	03/05/2002
141B	Quasi-Peak Adaptor	Hewlett Packard	100 Hz - 1 GHz	85650A	02/20/2001	01/16/2002
420	Amplifier	Hewlett Packard	2.0 GHz - 18 GHz	11975A	09/13/2001	09/13/2002
421	Harmonic Mixer	Hewlett Packard	18 GHz - 26.5 GHz	11970K	09/29/2000	09/29/2003
421A	Harmonic Mixer	Hewlett Packard	26.5 GHz - 40 GHz	11970A	09/29/2000	09/29/2003
421B	Harmonic Mixer	Hewlett Packard	40 GHz - 60 GHz	11970U	09/29/2000	09/29/2003
543	Preamplifier	Hewlett Packard	1.0 GHz - 26.5 GHz	8449B	06/27/2001	06/27/2002
734	DC Power Supply	Electro	0-8/0-16 volts, 10A	D-612	10/25/2001	10/25/2002
767	Biconilog	EMCO	26 - 2000 MHz	3142B	08/28/2001	08/28/2002



Retlif Testing Laboratories

Test Report Number R-9299-1
FCC ID: ESVOD850