



1190
ILAC MRA

Specific Absorption Rate (SAR) Test Report
for
Kinpo Electronics , Inc.
on the
Smart-Phone

Report No. : FA631719-1-2-01
Trade Name : Kinpo
Model Name : SP70R
FCC ID : ESN-SP70
Date of Testing : Apr. 27, 2006
Date of Report : May 06, 2006
Date of Review : May 06, 2006

- The test results refer exclusively to the presented test model/sample only.
- Without written approval of SPORTON International Inc., the test report shall not be reproduced except in full.
- Report Version: Rev. 01.

SPORTON International Inc.

6F, No.106, Sec. 1, Hsin Tai Wu Rd., Hsi Chih, Taipei Hsien, Taiwan, R.O.C.



Table of Contents

| | |
|--|-----------|
| 1. Statement of Compliance | 1 |
| 2. Administration Data | 2 |
| 2.1 Testing Laboratory | 2 |
| 2.2 Detail of Applicant | 2 |
| 2.3 Detail of Manufacturer | 2 |
| 2.4 Application Detail | 2 |
| 3. General Information | 3 |
| 3.1 Description of Device Under Test (DUT) | 3 |
| 3.2 Product Photo | 4 |
| 3.3 Applied Standards: | 6 |
| 3.4 Device Category and SAR Limits | 7 |
| 3.5 Test Conditions: | 7 |
| 3.5.1 Ambient Condition | 7 |
| 3.5.2 Test Configuration | 7 |
| 4. Specific Absorption Rate (SAR) | 8 |
| 4.1 Introduction | 8 |
| 4.2 SAR Definition | 8 |
| 5. SAR Measurement Setup | 9 |
| 5.1 DASY4 E-Field Probe System | 10 |
| 5.1.1 ET3DV6 E-Field Probe Specification | 11 |
| 5.1.2 ET3DV6 E-Field Probe Calibration | 11 |
| 5.2 DATA Acquisition Electronics (DAE) | 12 |
| 5.3 Robot | 13 |
| 5.4 Measurement Server | 13 |
| 5.5 SAM Twin Phantom | 13 |
| 5.6 Device Holder for SAM Twin Phantom | 15 |
| 5.7 Data Storage and Evaluation | 16 |
| 5.7.1 Data Storage | 16 |
| 5.7.2 Data Evaluation | 16 |
| 5.8 Test Equipment List | 19 |
| 6. Tissue Simulating Liquids | 20 |
| 7. Uncertainty Assessment | 22 |
| 8. SAR Measurement Evaluation | 24 |
| 8.1 Purpose of System Performance check | 24 |
| 8.2 System Setup | 24 |
| 8.3 Validation Results | 26 |
| 9. Description for DUT Testing Position | 27 |
| 10. Measurement Procedures | 33 |
| 11. SAR Test Results | 35 |
| 11.1 Right Cheek | 35 |
| 11.2 Right Tilted | 35 |
| 11.3 Left Cheek | 35 |
| 11.4 Left Tilted | 35 |
| 11.5 Keypad Up with 1.5 cm Gap | 36 |
| 11.6 Keypad Down with 1.5 cm Gap | 36 |
| 12. References | 37 |

Appendix A - System Performance Check Data

Appendix B - SAR Measurement Data

Appendix C - Calibration Data



1. Statement of Compliance

The Specific Absorption Rate (SAR) maximum results found during testing for the **Kinpo Electronics , Inc. Smart-Phone Kinpo SP70R** are **0.202 W/kg for PCS head SAR** and **0.665 W/kg for PCS body SAR** with expanded uncertainty 20.6%. They are in compliance with Specific Absorption Rate (SAR) for general population/uncontrolled exposure limits specified in FCC 47 CFR part 2 (2.1093) and ANSI/IEEE C95.1-1999 and had been tested in accordance with the measurement methods and procedures specified in OET Bulletin 65 Supplement C (Edition 01-01).

Approved by

A handwritten signature in blue ink that reads 'Daniel Lee'. The signature is written in a cursive, flowing style.

Dr. Daniel Lee
EMC/SAR Director



2. Administration Data

2.1 Testing Laboratory

Company Name : Sporton International Inc.
Department : Antenna Design/SAR
Address : No.52, Hwa-Ya 1st RD., Hwa Ya Technology Park, Kwei-Shan Hsiang, TaoYuan
Hsien, Taiwan, R.O.C.
Telephone Number : 886-3-327-3456
Fax Number : 886-3-327-0973

2.2 Detail of Applicant

Company Name : Kinpo Electronics , Inc.
Address : 10TH FL., 99 NAN-KING E. RD., SEC. 5, TAIPEI, TAIWAN, (105) R.O.C.
Telephone Number : 886-2-2662-2660
Fax Number : 886-2-2662-4903
Contact Person : tszu@kinpo.com.tw

2.3 Detail of Manufacturer

Company Name : Kinpo Electronics (China)Co., Ltd.
Address : SHA TOU VILLAGE,CHANG AN TOWN DONG GUAN CITY,GUAN
DONG PROVINCE

2.4 Application Detail

Date of reception of application: Mar. 17, 2006
Start of test : Apr. 27, 2006
End of test : Apr. 27, 2006



3. General Information

3.1 Description of Device Under Test (DUT)

Kinpo SP70R is the serial model of SP70. Difference between these models are ID. Updating Sporton report FA610605 by retesting worst SAR.

| | |
|--------------------------------------|---|
| DUT Type : | Smart-Phone |
| Trade Name : | Kinpo |
| Model Name : | SP70R |
| FCC ID : | ESN-SP70 |
| Tx Frequency : | PCS : 1850-1910 MHz WLAN/BT : 2400-2483.5 MHz |
| Rx Frequency : | PCS : 1930-1990 MHz WLAN/BT : 2400-2483.5 MHz |
| Antenna Type : | PCS : Fixed Internal WLAN/BT : Fixed Internal |
| Maximum Output Power : | PCS : 29.30 dBm WLAN: 18.69 dBm BT : 0.13 dBm |
| HW Version : | SP70-11 |
| SW Version : | 03.07 |
| Power Rating (DC/AC, Voltage) | 3.8V / 1300mA |
| Type of Modulation : | PCS : GMSK WLAN: DSSS BT : GFSK |
| DUT Stage : | Production Unit |
| Application Type : | Certification |



3.2 Product Photo Kinpo/SP70R





Kinpo/SP70





3.3 Applied Standards:

The Specific Absorption Rate (SAR) testing specification, method and procedure for this Smart-Phone is in accordance with the following standards:

47 CFR Part 2 (2.1093),
IEEE C95.1-1999,
IEEE C95.3-2002,
IEEE P1528-2003, and
OET Bulletin 65 Supplement C (Edition 01-01)



3.4 Device Category and SAR Limits

This device belongs to portable device category because its radiating structure is allowed to be used within 20 centimeters of the body of the user.

Limit for General Population/Uncontrolled exposure should be applied for this device, it is 1.6 W/kg as averaged over any 1 gram of tissue.

3.5 Test Conditions:

3.5.1 Ambient Condition

| Kinpo/SP70R | | |
|---|-------|------|
| Item | Head | Body |
| Ambient Temperature (°C) | 20-24 | |
| Tissue simulating liquid temperature (°C) | 20.8 | 20.8 |
| Humidity (%) | <60 % | |

| Kinpo/SP70 | | |
|---|-------|------|
| Item | Head | Body |
| Ambient Temperature (°C) | 20-24 | |
| Tissue simulating liquid temperature (°C) | 22.0 | 21.4 |
| Humidity (%) | <60 % | |

3.5.2 Test Configuration

The device was controlled by using a base station emulator R&S CMU200. Communication between the device and the emulator was established by air link. The distance between the DUT and the antenna of the emulator is larger than 50 cm and the output power radiated from the emulator antenna is at least 30 dB smaller than the output power of DUT.

Measurements were performed on the lowest, middle, and highest channel for each testing position for head SAR testing. Measurements were performed only on the middle channel if the SAR is below 3 dB of limit for body SAR testing.

The DUT was set from the emulator to radiate maximum output power during all testings.

For head SAR testing, EUT is in GSM link mode, and its crest factor is 8.3. For body SAR testing, EUT is in GPRS link mode, and its crest factor is 4 because EUT is GPRS class 10 device.



4. Specific Absorption Rate (SAR)

4.1 Introduction

SAR is related to the rate at which energy is absorbed per unit mass in an object exposed to a radio field. The SAR distribution in a biological body is complicated and is usually carried out by experimental techniques or numerical modeling. The standard recommends limits for two tiers of groups, occupational/controlled and general population/uncontrolled, based on a person's awareness and ability to exercise control over his or her exposure. In general, occupational/controlled exposure limits are higher than the limits for general population/uncontrolled.

4.2 SAR Definition

The SAR definition is the time derivative (rate) of the incremental energy (dW) absorbed by (dissipated in) an incremental mass (dm) contained in a volume element (dv) of a given density.

). The equation description is as below:

$$\mathbf{SAR} = \frac{d}{dt} \left(\frac{dW}{dm} \right) = \frac{d}{dt} \left(\frac{dW}{\rho dv} \right)$$

SAR is expressed in units of Watts per kilogram (W/kg)

SAR measurement can be either related to the temperature elevation in tissue by

$$\mathbf{SAR} = C \frac{\delta T}{\delta t}$$

, where C is the specific heat capacity, δT is the temperature rise and δt the exposure duration,

or related to the electrical field in the tissue by

$$\mathbf{SAR} = \frac{\sigma |E|^2}{\rho}$$

, where σ is the conductivity of the tissue, ρ is the mass density of the tissue and E is the rms electrical field strength.

However for evaluating SAR of low power transmitter, electrical field measurement is typically applied.

5. SAR Measurement Setup

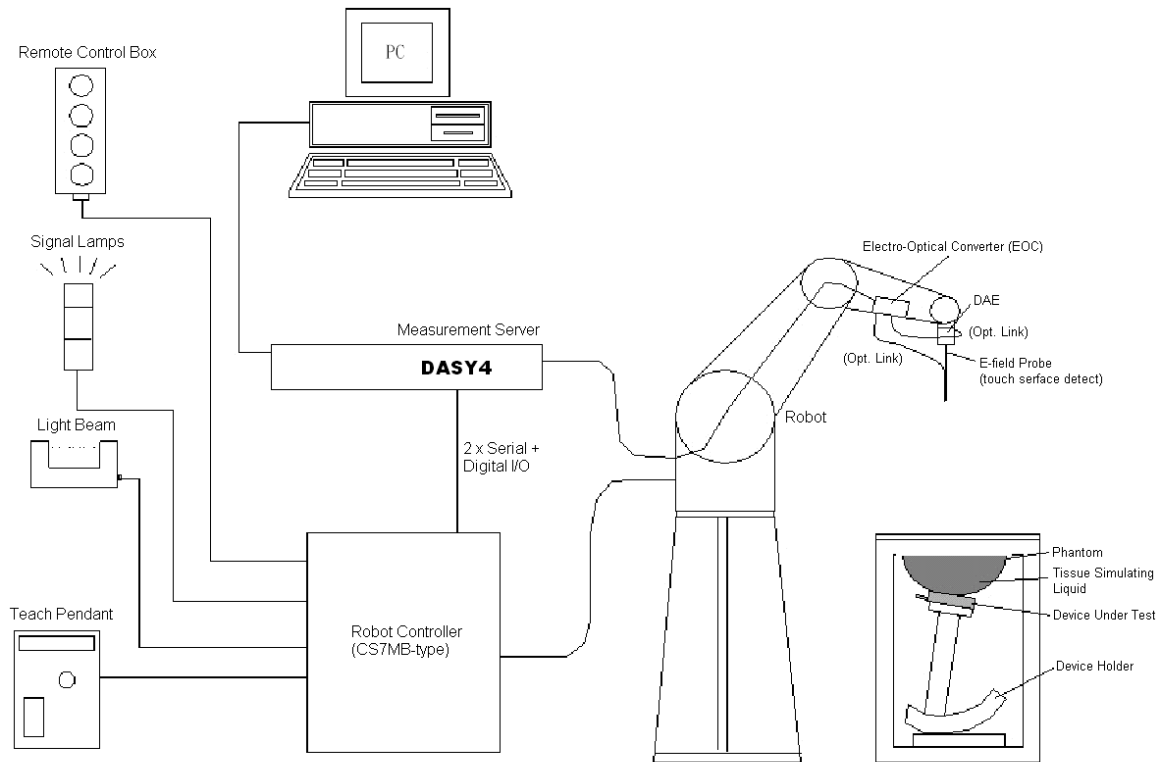


Fig. 5.1 DASY4 system



The DASY4 system for performance compliance tests is illustrated above graphically. This system consists of the following items:

- A standard high precision 6-axis robot with controller, a teach pendant and software
- A data acquisition electronic (DAE) attached to the robot arm extension
- A dosimetric probe equipped with an optical surface detector system
- The electro-optical converter (ECO) performs the conversion between optical and electrical signals
- A measurement server performs the time critical tasks such as signal filtering, control of the robot operation and fast movement interrupts.
- A probe alignment unit which improves the accuracy of the probe positioning
- A computer operating Windows XP
- DASY4 software
- Remote control with teach pendant and additional circuitry for robot safety such as warning lamps, etc.
- The SAM twin phantom
- A device holder
- Tissue simulating liquid
- Dipole for evaluating the proper functioning of the system

Some of the components are described in details in the following sub-sections.

5.1 DASY4 E-Field Probe System

The SAR measurement is conducted with the dosimetric probe ET3DV6 (manufactured by SPEAG). The probe is specially designed and calibrated for use in liquid with high permittivity. The dosimetric probe has special calibration in liquid at different frequency. This probe has a built in optical surface detection system to prevent from collision with phantom.

**5.1.1 ET3DV6 E-Field Probe Specification**

| | |
|--------------------------|--|
| Construction | Symmetrical design with triangular core Built-in optical fiber for surface detection system Built-in shielding against static charges PEEK enclosure material (resistant to organic solvents) |
| Calibration | Simulating tissue at frequencies of 900MHz, 1.8GHz and 2.45GHz for brain and muscle (accuracy $\pm 8\%$) |
| Frequency | 10 MHz to > 3 GHz |
| Directivity | ± 0.2 dB in brain tissue (rotation around probe axis) ± 0.4 dB in brain tissue (rotation perpendicular to probe axis) |
| Dynamic Range | 5 μ W/g to > 100 mW/g; Linearity: ± 0.2 dB |
| Surface Detection | ± 0.2 mm repeatability in air and clear liquids on reflecting surface |
| Dimensions | Overall length: 330mm Tip length: 16mm Body diameter: 12mm Tip diameter: 6.8mm Distance from probe tip to dipole centers: 2.7mm |
| Application | General dosimetry up to 3GHz Compliance tests for mobile phones and Wireless LAN Fast automatic scanning in arbitrary phantoms |

**Fig. 5.2 Probe setup on robot****5.1.2 ET3DV6 E-Field Probe Calibration**

Each probe needs to be calibrated according to a dosimetric assessment procedure with accuracy better than $\pm 10\%$. The spherical isotropy shall be evaluated and within ± 0.25 dB. The sensitivity parameters (NormX, NormY, and NormZ), the diode compression parameter (DCP) and the conversion factor (ConvF) of the probe are tested. The calibration data are as below:



| | | | | |
|--|----------------------------|---------------|-----------------------|-----------------------|
| Sensitivity | X axis : 1.68 μ V | | Y axis : 1.70 μ V | Z axis : 1.74 μ V |
| Diode compression point | X axis : 94 mV | | Y axis : 94 mV | Z axis : 94 mV |
| Conversion factor (Head / Body) | Frequency (MHz) | X axis | Y axis | Z axis |
| | 735~935 | 6.74 / 6.53 | 6.74 / 6.53 | 6.74 / 6.53 |
| | 1800~2000 | 5.16 / 4.56 | 5.16 / 4.56 | 5.16 / 4.56 |
| Boundary effect (Head / Body) | Frequency (MHz) | Alpha | Depth | |
| | 735~935 | 1.12 / 1.04 | 1.42 / 1.52 | |
| | 1800~2000 | 0.55 / 0.55 | 2.42 / 2.82 | |

NOTE:

- The probe parameters have been calibrated by the SPEAG.

5.2 DATA Acquisition Electronics (DAE)

The data acquisition electronics (DAE) consists of a highly sensitive electrometer-grade preamplifier with auto-zeroing, a channel and gain-switching multiplexer, a fast 16 bit AD-converter and a command decoder and control logic unit. Transmission to the measurement server is accomplished through an optical downlink for data and status information as well as an optical uplink for commands and the clock.

The mechanical probe mounting device includes two different sensor systems for frontal and sideways probe contacts. They are used for mechanical surface detection and probe collision detection.

The input impedance of the DAE is 200M Ohm; the inputs are symmetrical and floating. Common mode rejection is above 80dB.



5.3 Robot

The DASY4 system uses the high precision robots RX90BL type out of the newer series from Stäubli SA (France). For the 6-axis controller DASY5 system, the CS7MB robot controller version from Stäubli is used. The RX robot series have many features that are important for our application:

- High precision (repeatability 0.02 mm)
- High reliability (industrial design)
- Jerk-free straight movements
- Low ELF interference (the closed metallic construction shields against motor control fields)
- 6-axis controller

5.4 Measurement Server

The DASY4 measurement server is based on a PC/104 CPU board with
166 MHz CPU
32 MB chipset and
64 MB RAM.

Communication with
the DAE4 electronic box
the 16-bit AD-converter system for optical detection and digital I/O interface.

The measurement server performs all the real-time data evaluation for field measurements and surface detection, controls robot movements and handles safety operations.

5.5 SAM Twin Phantom

The SAM twin phantom is a fiberglass shell phantom with 2mm shell thickness (except the ear region where shell thickness increases to 6mm). It has three measurement areas:

- Left head
- Right head
- Flat phantom

The bottom plate contains three pair of bolts for locking the device holder. The device holder positions are adjusted to the standard measurement positions in the three sections.

A white cover is provided to tap the phantom during off-periods to prevent water evaporation and changes in the liquid parameters.



On the phantom top, three reference markers are provided to identify the phantom position with respect to the robot.

The phantom can be used with the following tissue simulating liquids:

*Water-sugar based liquid

*Glycol based liquids

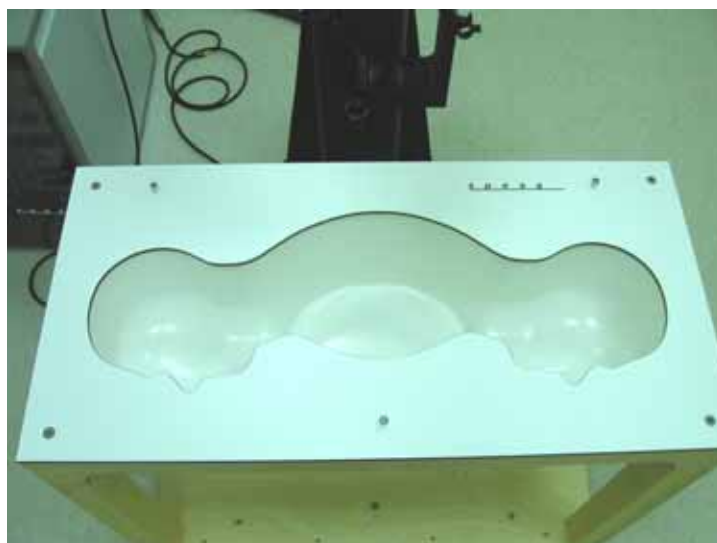


Fig. 5.3 Top view of twin phantom



Fig. 5.4 Bottom view of twin phantom

5.6 Device Holder for SAM Twin Phantom

The SAR in the Phantom is approximately inversely proportional to the square of the distance between the source and the liquid surface. For a source in 5 mm distance, a positioning uncertainty of $\pm 0.5\text{mm}$ would produce a SAR uncertainty of $\pm 20\%$. An accurate device position is therefore crucial for accurate and repeatable measurement. The position in which the devices must be measured, are defined by the standards.

The DASY device holder is designed to cope with different positions given in the standard. It has two scales for the device rotation (with respect to the body axis) and the device inclination (with respect to the line between the ear reference points). The rotation centers for both scales is the ear reference point (EPR). Thus the device needs no repositioning when changing the angles.

The DASY device holder has been made out of low-loss POM material having the following dielectric parameters: relative permittivity $\epsilon_r=3$ and loss tangent $\delta=0.02$. The amount of dielectric material has been reduced in the closest vicinity of the device, since measurements have suggested that the influence of the clamp on the test results could thus be lowered.



Fig. 5.5 Device Holder



5.7 Data Storage and Evaluation

5.7.1 Data Storage

The DASY4 software stores the assessed data from the data acquisition electronics as raw data (in microvolt readings from the probe sensors), together with all the necessary software parameters for the data evaluation (probe calibration data, liquid parameters and device frequency and modulation data) in measurement files with the extension .DA4. The postprocessing software evaluates the desired unit and format for output each time the data is visualized or exported. This allows verification of the complete software setup even after the measurement and allows correction of erroneous parameter settings. For example, if a measurement has been performed with an incorrect crest factor parameter in the device setup, the parameter can be corrected afterwards and the data can be reevaluated.

The measured data can be visualized or exported in different units or formats, depending on the selected probe type (e.g., [V/m], [A/m], [mW/g]). Some of these units are not available in certain situations or give meaningless results, e.g., a SAR-output in a loseless media, will always be zero. Raw data can also be exported to perform the evaluation with other software packages.

5.7.2 Data Evaluation

The DASY4 postprocessing software (SEMCAD) automatically executes the following procedures to calculate the field units from the microvolt readings at the probe connector. The parameters used in the evaluation are stored in the configuration modules of the software :

| | | |
|----------------------------|---------------------------|---|
| Probe parameters : | - Sensitivity | $\text{Norm}_i, a_{i0}, a_{i1}, a_{i2}$ |
| | - Conversion factor | ConvF_i |
| | - Diode compression point | dcp_i |
| Device parameters : | - Frequency | f |
| | - Crest factor | cf |
| Media parameters : | - Conductivity | |
| | - Density | |

These parameters must be set correctly in the software. They can be found in the component documents or they can be imported into the software from the configuration files issued for the DASY components. In the direct measuring mode of the multimeter option, the parameters of the actual system setup are used. In the scan visualization and export modes, the parameters stored in the corresponding document files are used.

The first step of the evaluation is a linearization of the filtered input signal to account for the compression characteristics of the detector diode. The compensation depends on the input signal, the diode type and the DC-transmission factor from the diode to the evaluation electronics. If the exciting field is pulsed, the crest factor of the signal must be known to correctly compensate for peak power. The formula for each channel



can be given as :

$$V_i = U_i + U_i^2 \cdot \frac{cf}{dcp_i}$$

with V_i = compensated signal of channel i ($i = x, y, z$)
 U_i = input signal of channel i ($i = x, y, z$)
 cf = crest factor of exciting field (DASY parameter)
 dcp_i = diode compression point (DASY parameter)

From the compensated input signals, the primary field data for each channel can be evaluated :

$$\text{E-field probes : } E_i = \sqrt{\frac{V_i}{\text{Norm}_i \text{ConvF}}}$$

$$\text{H-field probes : } H_i = \sqrt{V_i \frac{a_{i0} + a_{i1}f + a_{i2}f^2}{f}}$$

with V_i = compensated signal of channel i ($i = x, y, z$)
 Norm_i = sensor sensitivity of channel i ($i = x, y, z$)
 $\mu \text{ V}/(\text{V}/\text{m})^2$ for E-field Probes
 ConvF = sensitivity enhancement in solution
 a_{ij} = sensor sensitivity factors for H-field probes
 f = carrier frequency [GHz]
 E_i = electric field strength of channel i in V/m
 H_i = magnetic field strength of channel i in A/m

The RSS value of the field components gives the total field strength (Hermitian magnitude) :

$$E_{tot} = \sqrt{E_x^2 + E_y^2 + E_z^2}$$

The primary field data are used to calculate the derived field units.

$$\text{SAR} = E_{tot}^2 \cdot \frac{\sigma}{\rho \cdot 1000}$$

with SAR = local specific absorption rate in mW/g
 E_{tot} = total field strength in V/m
 σ = conductivity in [mho/m] or [Siemens/m]
 ρ = equivalent tissue density in g/cm³



* Note that the density is set to 1, to account for actual head tissue density rather than the density of the tissue simulating liquid.

The power flow density is calculated assuming the excitation field to be a free space field.

$$P_{pwe} = \frac{E_{tot}^2}{3770} \quad \text{or} \quad P_{pwe} = H_{tot}^2 \cdot 37.7$$

with P_{pwe} = equivalent power density of a plane wave in mW/cm²
 E_{tot} = total electric field strength in V/m
 H_{tot} = total magnetic field strength in A/m

**5.8 Test Equipment List**

| Manufacture | Name of Equipment | Type/Model | Serial Number | Calibration | |
|-------------|------------------------------------|-----------------------|-----------------|---------------|---------------|
| | | | | Last Cal. | Due Date |
| SPEAG | Dosimetric E-Filed Probe | ET3DV6 | 1788 | Sep. 29, 2005 | Sep. 30, 2007 |
| SPEAG | 835MHz System Validation Kit | D835V2 | 499 | Mar. 15, 2006 | Mar. 15, 2008 |
| SPEAG | 900MHz System Validation Kit | D900V2 | 190 | Jul. 19, 2005 | Jul. 19, 2007 |
| SPEAG | 1800MHz System Validation Kit | D1800V2 | 2d056 | Jul. 20, 2005 | Jul. 20, 2007 |
| SPEAG | 1900MHz System Validation Kit | D1900V2 | 5d041 | Mar. 21, 2006 | Mar. 21, 2008 |
| SPEAG | 2450MHz System Validation Kit | D2450V2 | 736 | Jul. 12, 2005 | Jul. 12, 2007 |
| SPEAG | Data Acquisition Electronics | DAE3 | 577 | Nov. 11, 2005 | Nov. 11, 2006 |
| SPEAG | Device Holder | N/A | N/A | NCR | NCR |
| SPEAG | Phantom | QD 000 P40 C | TP-1150 | NCR | NCR |
| SPEAG | Robot | Staubli RX90BL | F03/5W15A1/A/01 | NCR | NCR |
| SPEAG | Software | DASY4 V4.6 Build 23 | N/A | NCR | NCR |
| SPEAG | Software | SEMCAD V1.8 Build 161 | N/A | NCR | NCR |
| SPEAG | Measurement Server | SE UMS 001 BA | 1021 | NCR | NCR |
| Agilent | S-Parameter Network Analyzer (PNA) | E8358A | US40260131 | Sep. 16, 2005 | Sep. 16, 2006 |
| Agilent | Dielectric Probe Kit | 85070D | US01440205 | NCR | NCR |
| Agilent | Dual Directional Coupler | 778D | 50422 | NCR | NCR |
| Agilent | Power Amplifier | 8449B | 3008A01917 | NCR | NCR |
| R & S | Radio Communication Tester | CMU200 | 105934 | Aug. 24, 2004 | Aug. 24, 2006 |
| Agilent | Power Meter | E4416A | GB41292344 | Jan. 23, 2006 | Jan. 23, 2008 |
| Agilent | Signal Generator | E8247C | MY43320596 | Feb. 06, 2006 | Feb. 06, 2007 |
| Agilent | Base Station Emulator | E5515C | GB43460754 | Feb. 21, 2006 | Feb. 21, 2008 |

Table 5.1 Test Equipment List



6. Tissue Simulating Liquids

For the measurement of the field distribution inside the SAM phantom with DASY4, the phantom must be filled with around 25 liters of homogeneous tissue simulating liquid. The liquid height from the ear reference point (ERP) of the phantom to the liquid top surface is (head SAR) or from the flat phantom to the liquid top surface (body SAR) is 15.2cm.

The following ingredients for tissue simulating liquid are used:

- **Water:** deionized water (pure H₂O), resistivity $\geq 16\text{M}\Omega$ - as basis for the liquid
- **Sugar:** refined sugar in crystals, as available in food shops – to reduce relative permittivity
- **Salt:** pure NaCl – to increase conductivity
- **Cellulose:** Hydroxyethyl-cellulose, medium viscosity (75-125 mPa.s, 2% in water, 20°C), CAS#54290-to increase viscosity and to keep sugar in solution.
- **Preservative:** Preventol D-7 Bayer AG, D-51368 Leverkusen, CAS#55965-84-9- to prevent the spread of bacteria and molds.
- **DGMBE:** Deithlenglycol-monobuthyl ether (DGMBE), Fluka Chemie GmbH, CAS#112-34-5 – to reduce relative permittivity.

Table 6.1 gives the recipes for one liter of head and body tissue simulating liquid for frequency band 1900 MHz.

| Ingredient | HSL-1900 | MSL-1900 |
|------------------------------|---|--|
| Water | 552.42 g | 716.56 g |
| Cellulose | 0 g | 0 g |
| Salt | 3.06 g | 4.0 g |
| Preventol D-7 | 0 g | 0 g |
| Sugar | 0 g | 0 g |
| DGMBE | 444.52 g | 300.67 g |
| Total amount | 1 liter (1.0 kg) | 1 liter (1.0 kg) |
| Dielectric Parameters at 22° | f= 1900 MHz $\epsilon_r = 40.0 \pm 5\%$, $\sigma = 1.4 \pm 5\%$ S/m | f= 1900 MHz $\epsilon_r = 53.3 \pm 5\%$, $\sigma = 1.52 \pm 5\%$ S/m |

Table 6.1

The dielectric parameters of the liquids were verified prior to the SAR evaluation using an Agilent 85070D Dielectric Probe Kit and an Agilent E8358A Network Analyzer.



Table 6.2 shows the measuring results for head and muscle simulating liquid.

| Model | | Bands | Frequency(MHz) | Permittivity (ϵ_r) | Conductivity (σ) | Measurement Date |
|-------|------|-------------------------------|----------------|-------------------------------|---------------------------|------------------|
| SP70R | Head | PCS band (1850 ~ 1910 MHz) | 1850.2 | 39.3 | 1.38 | Apr. 27, 2006 |
| | | | 1880.0 | 39.2 | 1.41 | |
| | | | 1909.8 | 39.1 | 1.44 | |
| | Body | PCS band (1850 ~ 1910 MHz) | 1850.2 | 52.8 | 1.53 | Apr. 27, 2006 |
| | | | 1880.0 | 52.7 | 1.56 | |
| | | | 1909.8 | 52.6 | 1.59 | |
| SP70 | Head | PCS band (1850 ~ 1910 MHz) | 1850.2 | 39.3 | 1.42 | Jan. 17, 2006 |
| | | | 1880.0 | 39.1 | 1.44 | |
| | | | 1909.8 | 39.0 | 1.46 | |
| | Body | PCS band (1850 ~ 1910 MHz) | 1850.2 | 52.8 | 1.53 | Jan. 19, 2006 |
| | | | 1880.0 | 52.7 | 1.56 | |
| | | | 1909.8 | 52.7 | 1.59 | |

Table 6.2

The measuring data are consistent with $\epsilon_r = 40.0 \pm 5\%$ and $\sigma = 1.4 \pm 5\%$ for head PCS band and $\epsilon_r = 53.3 \pm 5\%$ and $\sigma = 1.52 \pm 5\%$ for body PCS band.



7. Uncertainty Assessment

The component of uncertainty may generally be categorized according to the methods used to evaluate them. The evaluation of uncertainty by the statistical analysis of a series of observations is termed a Type A evaluation of uncertainty. The evaluation of uncertainty by means other than the statistical analysis of a series of observation is termed a Type B evaluation of uncertainty. Each component of uncertainty, however evaluated, is represented by an estimated standard deviation, termed standard uncertainty, which is determined by the positive square root of the estimated variance.

A Type A evaluation of standard uncertainty may be based on any valid statistical method for treating data. This includes calculating the standard deviation of the mean of a series of independent observations; using the method of least squares to fit a curve to the data in order to estimate the parameter of the curve and their standard deviations; or carrying out an analysis of variance in order to identify and quantify random effects in certain kinds of measurement.

A type B evaluation of standard uncertainty is typically based on scientific judgment using all of the relevant information available. These may include previous measurement data, experience and knowledge of the behavior and properties of relevant materials and instruments, manufacture's specification, data provided in calibration reports and uncertainties assigned to reference data taken from handbooks. Broadly speaking, the uncertainty is either obtained from an outdoor source or obtained from an assumed distribution, such as the normal distribution, rectangular or triangular distributions indicated in Table 6.1

| Uncertainty Distributions | Normal | Rectangular | Triangular | U-shape |
|-----------------------------------|--------------------|-------------|------------|---------|
| Multiplying factor ^(a) | 1/k ^(b) | 1/ 3 | 1/ 6 | 1/ 2 |

(a) standard uncertainty is determined as the product of the multiplying factor and the estimated range of variations in the measured quantity

(b) is the coverage factor

Table 7.1

The combined standard uncertainty of the measurement result represents the estimated standard deviation of the result. It is obtained by combining the individual standard uncertainties of both Type A and Type B evaluation using the usual “root-sum-squares” (RSS) methods of combining standard deviations by taking the positive square root of the estimated variances.

Expanded uncertainty is a measure of uncertainty that defines an interval about the measurement result within which the measured value is confidently believed to lie. It is obtained by multiplying the combined standard uncertainty by a coverage factor. Typically, the coverage factor ranges from 2 to 3. Using a coverage factor allows the true value of a measured quantity to be specified with a defined probability within the specified uncertainty range. For purpose of this document, a coverage factor two is used, which corresponds to confidence interval of about 95 %. The DASY4 uncertainty Budget is showed in Table 7.2.



| Error Description | Uncertainty Value \pm % | Probability Distribution | Divisor | C_i I_g | Standard Unc. (1-g) | v_i or V_{eff} |
|--|---------------------------|--------------------------|------------|-----------------|------------------------------|--------------------------|
| Measurement System | | | | | | |
| Probe Calibration | ± 4.8 | Normal | 1 | 1 | ± 4.8 | |
| Axial Isotropy | ± 4.7 | Rectangular | $\sqrt{3}$ | $(1-C_p)^{1/2}$ | ± 1.9 | |
| Hemispherical Isotropy | ± 9.6 | Rectangular | $\sqrt{3}$ | $(C_p)^{1/2}$ | ± 3.9 | |
| Boundary Effect | ± 1.0 | Rectangular | $\sqrt{3}$ | 1 | ± 0.6 | |
| Linearity | ± 4.7 | Rectangular | $\sqrt{3}$ | 1 | ± 2.7 | |
| System Detection Limit | ± 1.0 | Rectangular | $\sqrt{3}$ | 1 | ± 0.6 | |
| Readout Electronics | ± 1.0 | Rectangular | 1 | 1 | ± 1.0 | |
| Response Time | ± 0.8 | Normal | $\sqrt{3}$ | 1 | ± 0.5 | |
| Integration time | ± 2.6 | Rectangular | $\sqrt{3}$ | 1 | ± 1.5 | |
| RF Ambient Conditions | ± 3.0 | Rectangular | $\sqrt{3}$ | 1 | ± 1.7 | |
| Probe Positioner Mech. Tolerance | ± 0.4 | Rectangular | $\sqrt{3}$ | 1 | ± 0.2 | |
| Probe Positioning with respect to Phantom Shell | ± 2.9 | Rectangular | $\sqrt{3}$ | 1 | ± 1.7 | |
| Extrapolation and Interpolation Algorithms for Max. SAR Evaluation | ± 1.0 | Rectangular | $\sqrt{3}$ | 1 | ± 0.6 | |
| Test sample Related | | | | | | |
| Test sample Positioning | ± 2.9 | Normal | 1 | 1 | ± 2.9 | 145 |
| Device Holder Uncertainty | ± 3.6 | Normal | 1 | 1 | ± 3.6 | 5 |
| Output Power Variation-SAR drift measurement | ± 2.5 | Rectangular | $\sqrt{3}$ | 1 | ± 1.4 | |
| Phantom and Tissue parameters | | | | | | |
| Phantom uncertainty(Including shape and thickness tolerances) | ± 4.0 | Rectangular | $\sqrt{3}$ | 1 | ± 2.3 | |
| Liquid Conductivity Target tolerance | ± 5.0 | Rectangular | $\sqrt{3}$ | 0.64 | ± 1.8 | |
| Liquid Conductivity measurement uncertainty | ± 2.5 | Normal | 1 | 0.64 | ± 1.6 | |
| Liquid Permittivity Target tolerance | ± 5.0 | Rectangular | $\sqrt{3}$ | 0.6 | ± 1.7 | |
| Liquid Permittivity measurement uncertainty | ± 2.0 | Normal | 1 | 0.6 | ± 1.2 | |
| Combined standard uncertainty | | | | | ± 10.3 | 330 |
| Coverage Factor for 95 % | | K=2 | | | | |
| Expanded uncertainty (Coverage factor = 2) | | | | | ± 20.6 | |

Table 7.2 Uncertainty Budget of DASY



8. SAR Measurement Evaluation

Each DASY system is equipped with one or more system validation kits. These units, together with the predefined measurement procedures within the DASY software, enable the user to conduct the system performance check and system validation. System validation kit includes a dipole, tripod holder to fix it underneath the flat phantom and a corresponding distance holder.

8.1 Purpose of System Performance check

The system performance check verifies that the system operates within its specifications. System and operator errors can be detected and corrected. It is recommended that the system performance check be performed prior to any usage of the system in order to guarantee reproducible results. The system performance check uses normal SAR measurements in a simplified setup with a well characterized source. This setup was selected to give a high sensitivity to all parameters that might fail or vary over time. The system check does not intend to replace the calibration of the components, but indicates situations where the system uncertainty is exceeded due to drift or failure.

8.2 System Setup

In the simplified setup for system evaluation, the DUT is replaced by a calibrated dipole and the power source is replaced by a continuous wave which comes from a signal generator at frequency 1900 MHz. The calibrated dipole must be placed beneath the flat phantom section of the SAM twin phantom with the correct distance holder. The distance holder should touch the phantom surface with a light pressure at the reference marking and be oriented parallel to the long side of the phantom. The equipment setup is shown below:

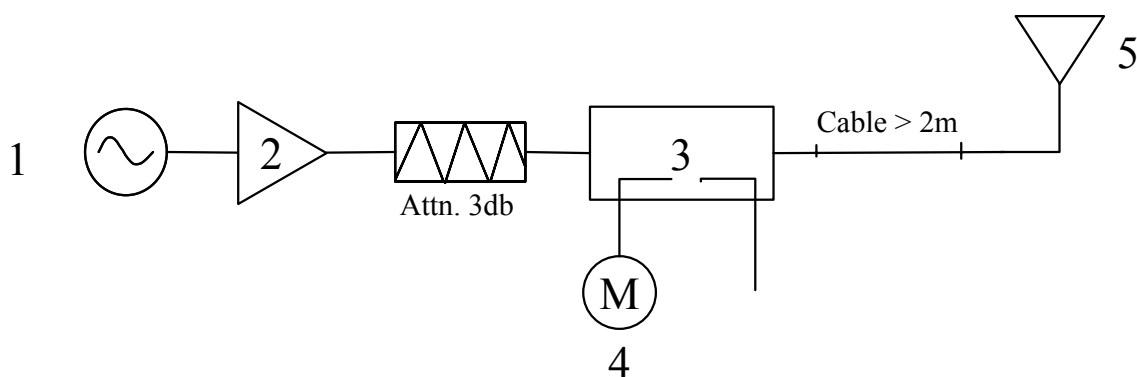


Fig. 8.1



1. Signal Generator
2. Amplifier
3. Directional Coupler
4. Power Meter
5. 1900 MHz Dipole

The output power on dipole port must be calibrated to 20dBm (100mW) before dipole is connected.



Fig 8.2 Dipole Setup



8.3 Validation Results

Comparing to the original SAR value provided by Speag, the validation data should be within its specification of 10 %. Table 8.1 shows the target SAR and measured SAR after normalized to 1W input power.

| Model | | | Target (W/kg) | Measurement data (W/kg) | Variation | Measurement Date |
|-------|-----------------------------|-----------|---------------|-------------------------|-----------|------------------|
| SP70R | PCS band (1900MHz) for head | SAR (1g) | 38.4 | 38.8 | 1.0 % | Apr. 27, 2006 |
| | | SAR (10g) | 20.5 | 20.3 | -1.0 % | |
| | PCS band (1900MHz) for body | SAR (1g) | 41.1 | 42 | 2.2 % | Apr. 27, 2006 |
| | | SAR (10g) | 21.8 | 22.4 | 2.8 % | |
| SP70 | PCS band (1900MHz) for head | SAR (1g) | 41.6 | 39 | -6.3 % | Jan. 17, 2006 |
| | | SAR (10g) | 21.6 | 20.4 | -5.6 % | |
| | PCS band (1900MHz) for body | SAR (1g) | 42 | 41.8 | -0.5 % | Jan. 19, 2006 |
| | | SAR (10g) | 22 | 22.3 | 1.4 % | |

Table 8.1

The table above indicates the system performance check can meet the variation criterion.



9. Description for DUT Testing Position

This DUT was tested in 6 different positions. They are left cheek, left tilted, right cheek, right tilted, body worn with keypad up and body worn with keypad down as illustrated below:

- 1) “Cheek Position”
 - i) To position the device with the vertical center line of the body of the device and the horizontal line crossing the center piece in a plane parallel to the sagittal plane of the phantom. While maintaining the device in this plane, align the vertical center line with the reference plane containing the three ear and mouth reference point (M, RE and LE) and align the center of the ear piece with the line RE-LE.
 - ii) To move the device towards the phantom with the ear piece aligned with the line LE-RE until the phone touched the ear. While maintaining the device in the reference plane and maintaining the phone contact with the ear, move the bottom of the phone until any point on the front side is in contact with the cheek of the phantom or until contact with the ear is lost (see Fig. 9.1).
- 2) “Tilted Position”
 - i) To position the device in the “cheek” position described above.
 - ii) While maintaining the device the reference plane described above and pivoting against the ear, move it outward away from the mouth by an angle of 15 degrees or until contact with the ear is lost (see Fig. 9.2).
- 3) “Body Worn”
 - i) To position the device parallel to the phantom surface with either keypad up or down.
 - ii) To adjust the phone parallel to the flat phantom.
 - iii) To adjust the distance between the phone top/bottom surface and the flat phantom to 1.5 cm.

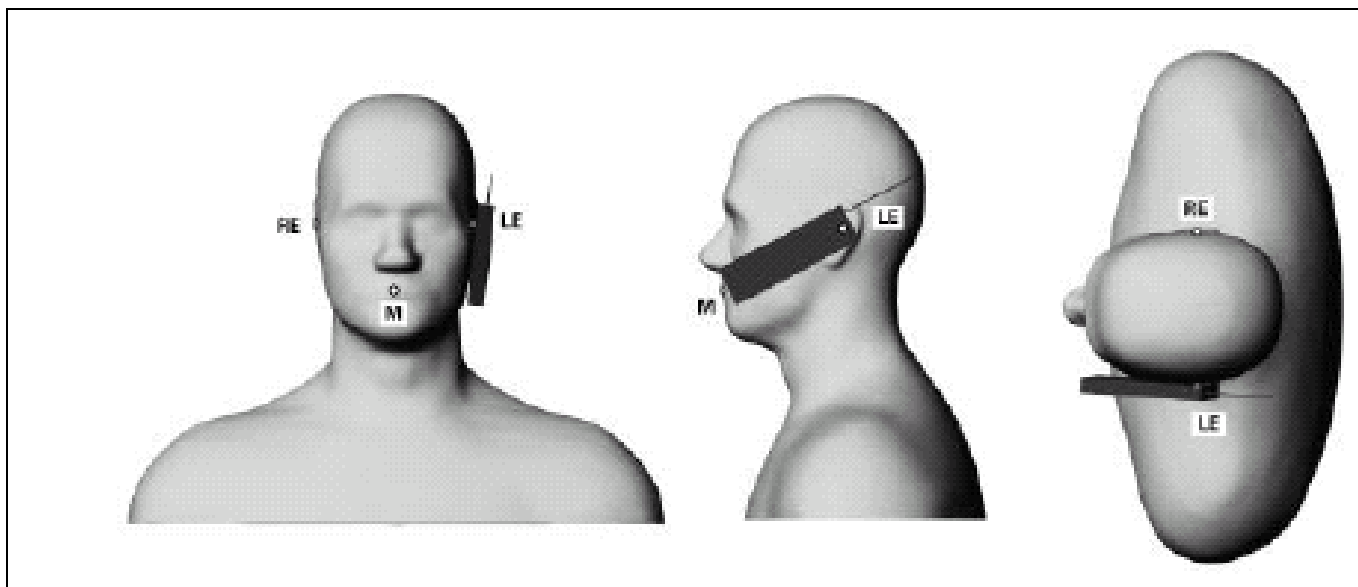


Fig. 9.1 Phone Position 1, “Cheek” or “Touch” Position. The reference points for the right ear (RE), left ear (LE) and mouth (M), which define the plane for phone positioning, are indicated.

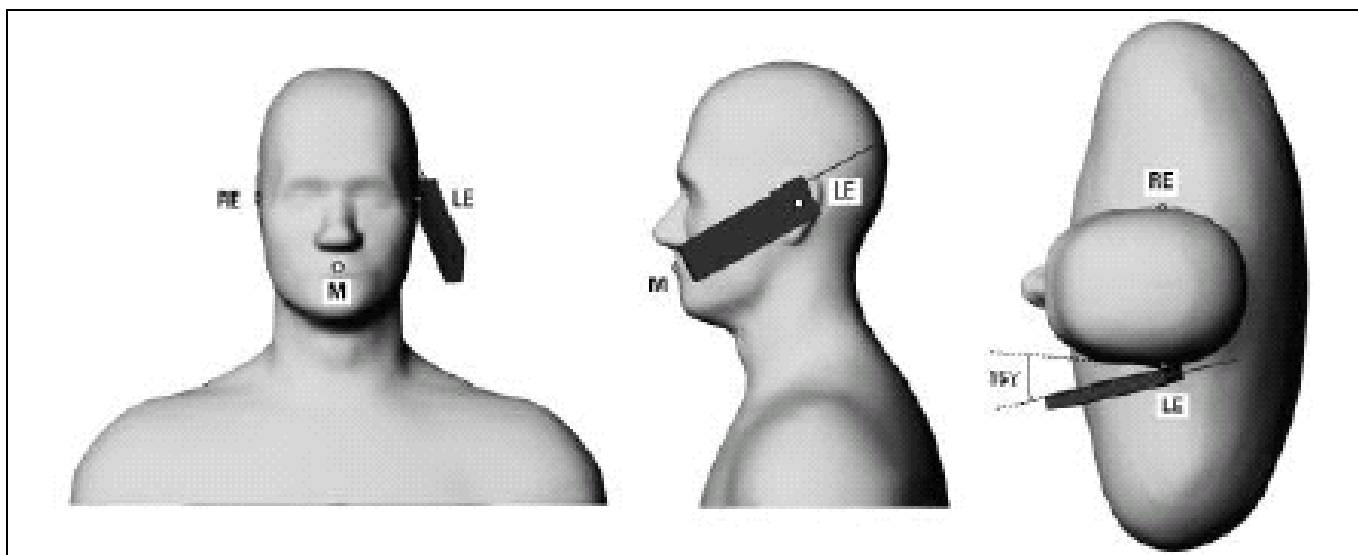
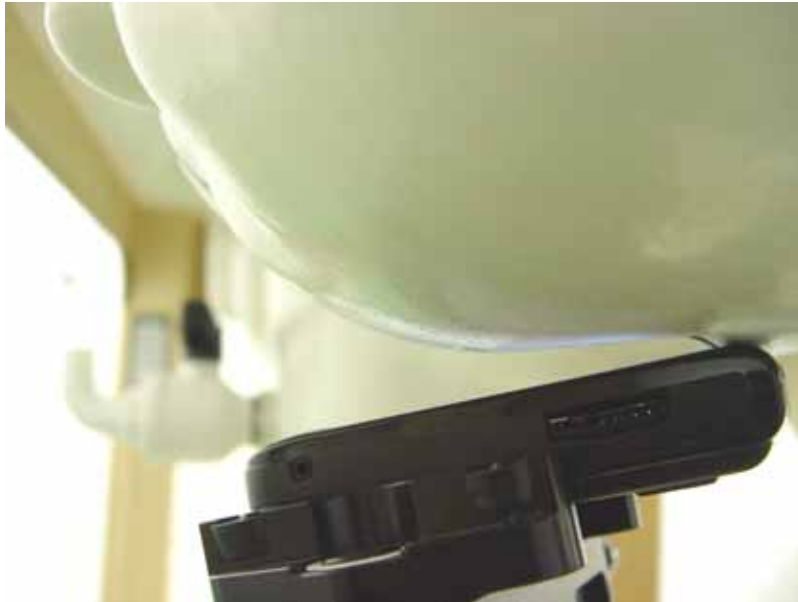


Fig. 9.2 Phone Position 2, “Tilted Position”. The reference point for the right ear (RE), left ear (LE) and mouth (M), which define the plane for phone positioning, are indicated.

Kinpo/SP70R

**Fig. 9.3 Left Tilted****Fig. 9.4 Keypad Down with 1.5cm Gap**



Kinpo/SP70



Fig. 9.5 Right Cheek



Fig. 9.6 Right Tilted



Fig. 9.7 Left Cheek

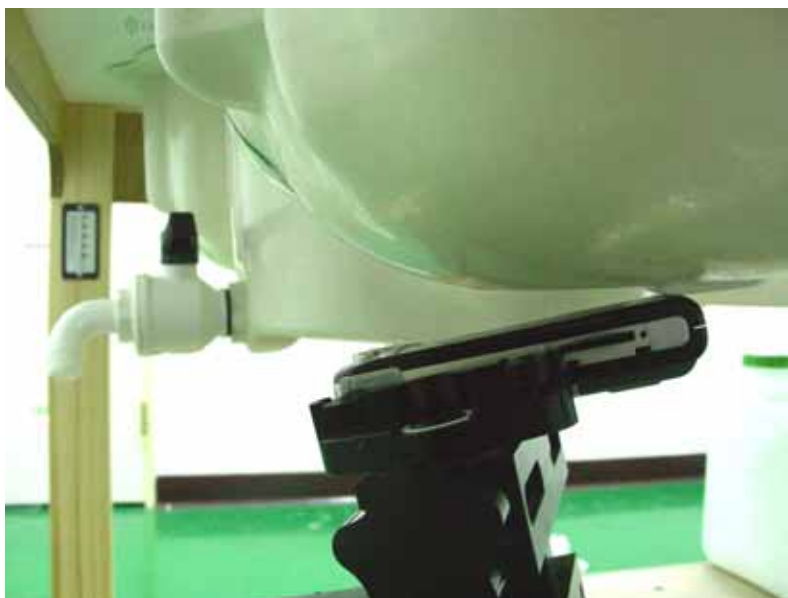


Fig. 9.8 Left Tilted

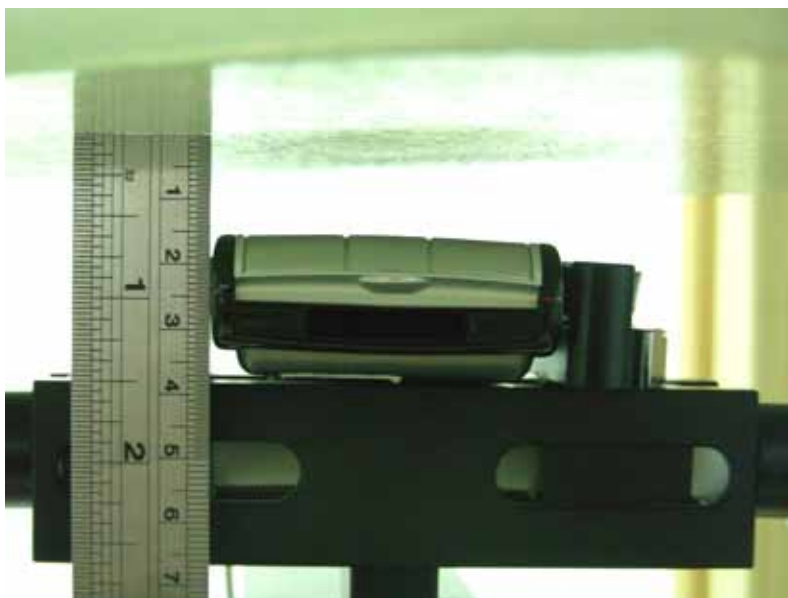


Fig. 9.9 Keypad Up with 1.5cm Gap

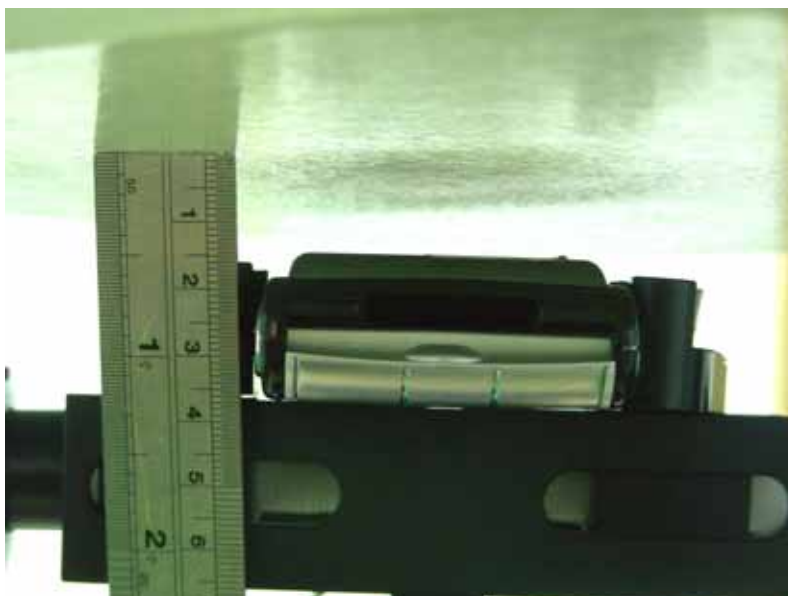


Fig. 9.10 Keypad Down with 1.5cm Gap



10. Measurement Procedures

The measurement procedures are as follows:

- Linking DUT with base station emulator CMU200 in middle channel for PCS band
- Setting PCL=0 for PCS on CMU200 to allow DUT to radiate maximum output power
- Measuring output power through RF cable and power meter
- Placing the DUT in the positions described in the last section
- Setting scan area, grid size and other setting on the DASY4 software
- Taking data for the lowest, middle, and highest channel on each testing position

According to the IEEE P1528 draft standard, the recommended procedure for assessing the peak spatial-average SAR value consists of the following steps:

- Power reference measurement
- Area scan
- Zoom scan
- Power reference measurement

10.1 Spatial Peak SAR Evaluation

The procedure for spatial peak SAR evaluation has been implemented according to the IEEE1528-2003 standard. It can be conducted for 1g and 10g, as well as for user-specific masses. The DASY4 software includes all numerical procedures necessary to evaluate the spatial peak SAR value.

Base on the Draft: SCC-34, SC-2, WG-2-Computational Dosimetry, IEEE P1528/D1.2 (Recommended Practice for Determining the Peak Spatial-Average Specific Absorption Rate (SAR) in the Human Head from Wireless Communications Devices: Measurement Techniques), a new algorithm has been implemented. The spatial-peak SAR can be computed over any required mass.

The base for the evaluation is a "cube" measurement. The measured volume must include the 1g and 10g cubes with the highest averaged SAR values. For that purpose , the center of the measured volume is aligned to the interpolated peak SAR value of a previously performed area scan.

The entire evaluation of the spatial peak values is performed within the postprocessing engine (SEMCAD). The system always gives the maximum values for the 1g and 10g cubes. The algorithm to find the cube with highest averaged SAR is divided into the following stages:



-
- extraction of the measured data (grid and values) from the Zoom Scan
 - calculation of the SAR value at every measurement point based on all stored data (A/D values and measurement parameters)
 - generation of a high-resolution mesh within the measured volume
 - interpolation of all measured values from the measurement grid to the high-resolution grid
 - extrapolation of the entire 3-D field distribution to the phantom surface over the distance from sensor to surface
 - calculation of the averaged SAR within masses of 1g and 10g

10.2 Scan Procedures

First **Area Scan** is used to locate the approximate location(s) of the local peak SAR value(s). The measurement grid within an **Area Scan** is defined by the grid extent, grid step size and grid offset. Next, in order to determine the EM field distribution in a three-dimensional spatial extension, **Zoom Scan** is required. The **Zoom Scan** measures 5x5x7 points with step size 8, 8 and 5 mm. The **Zoom Scan** is performed around the highest E-field value to determine the averaged SAR-distribution over 1 g.

10.3 SAR Averaged Methods

In DASY4, the interpolation and extrapolation are both based on the modified Quadratic Shepard's method. The interpolation scheme combines a least-square fitted function method and a weighted average method which are the two basic types of computational interpolation and approximation.

Extrapolation routines are used to obtain SAR values between the lowest measurement points and the inner phantom surface. The extrapolation distance is determined by the surface detection distance and the probe sensor offset. The uncertainty increases with the extrapolation distance. To keep the uncertainty within 1% for the 1 g and 10 g cubes, the extrapolation distance should not be larger than 5 mm.

**11. SAR Test Results****11.1 Right Cheek**

| Model | Bands | Chan. | Freq. (MHz) | Modulation type | Conducted Power (dBm) | Power Drift (dB) | Measured 1g SAR (W/kg) | Limits (W/Kg) | Results |
|-------|-------|------------|-------------|-----------------|-----------------------|------------------|------------------------|---------------|---------|
| SP70R | PCS | 512 (Low) | 1850.2 | GMSK | 29.14 | - | - | - | - |
| | | 661(Mid) | 1880.0 | GMSK | 29.17 | - | - | - | - |
| | | 810 (High) | 1909.8 | GMSK | 29.30 | - | - | - | - |
| SP70 | PCS | 512 (Low) | 1850.2 | GMSK | 29.11 | - | - | - | - |
| | | 661(Mid) | 1880.0 | GMSK | 29.11 | -0.122 | 0.115 | 1.6 | Pass |
| | | 810 (High) | 1909.8 | GMSK | 29.24 | - | - | - | - |

11.2 Right Tilted

| Model | Bands | Chan. | Freq. (MHz) | Modulation type | Conducted Power (dBm) | Power Drift (dB) | Measured 1g SAR (W/kg) | Limits (W/Kg) | Results |
|-------|-------|------------|-------------|-----------------|-----------------------|------------------|------------------------|---------------|---------|
| SP70R | PCS | 512 (Low) | 1850.2 | GMSK | 29.14 | - | - | - | - |
| | | 661(Mid) | 1880.0 | GMSK | 29.17 | - | - | - | - |
| | | 810 (High) | 1909.8 | GMSK | 29.30 | - | - | - | - |
| SP70 | PCS | 512 (Low) | 1850.2 | GMSK | 29.11 | - | - | - | - |
| | | 661(Mid) | 1880.0 | GMSK | 29.11 | 0.038 | 0.146 | 1.6 | Pass |
| | | 810 (High) | 1909.8 | GMSK | 29.24 | - | - | - | - |

11.3 Left Cheek

| Model | Bands | Chan. | Freq. (MHz) | Modulation type | Conducted Power (dBm) | Power Drift (dB) | Measured 1g SAR (W/kg) | Limits (W/Kg) | Results |
|-------|-------|------------|-------------|-----------------|-----------------------|------------------|------------------------|---------------|---------|
| SP70R | PCS | 512 (Low) | 1850.2 | GMSK | 29.14 | - | - | - | - |
| | | 661(Mid) | 1880.0 | GMSK | 29.17 | - | - | - | - |
| | | 810 (High) | 1909.8 | GMSK | 29.30 | - | - | - | - |
| SP70 | PCS | 512 (Low) | 1850.2 | GMSK | 29.11 | - | - | - | - |
| | | 661(Mid) | 1880.0 | GMSK | 29.11 | -0.192 | 0.177 | 1.6 | Pass |
| | | 810 (High) | 1909.8 | GMSK | 29.24 | - | - | - | - |

11.4 Left Tilted

| Model | Bands | Chan. | Freq. (MHz) | Modulation type | Conducted Power (dBm) | Power Drift (dB) | Measured 1g SAR (W/kg) | Limits (W/Kg) | Results |
|-------|--------------------|-------------------|---------------|-----------------|-----------------------|------------------|------------------------|---------------|-------------|
| SP70R | PCS | 512 (Low) | 1850.2 | GMSK | 29.14 | - | - | - | - |
| | | 661(Mid) | 1880.0 | GMSK | 29.17 | - | - | - | - |
| | | 810 (High) | 1909.8 | GMSK | 29.30 | 0.045 | 0.202 | 1.6 | Pass |
| | PCS with Bluetooth | 810 (High) | 1909.8 | GMSK | 29.30 | - | - | - | - |
| SP70 | PCS | 512 (Low) | 1850.2 | GMSK | 29.11 | -0.034 | 0.128 | 1.6 | Pass |
| | | 661(Mid) | 1880.0 | GMSK | 29.11 | 0.022 | 0.187 | 1.6 | Pass |
| | | 810 (High) | 1909.8 | GMSK | 29.24 | 0.008 | 0.191 | 1.6 | Pass |
| | PCS with Bluetooth | 810 (High) | 1909.8 | GMSK | 29.24 | -0.119 | 0.183 | 1.6 | Pass |

**11.5 Keypad Up with 1.5 cm Gap**

| Model | Bands | Chan. | Freq. (MHz) | Modulation type | Conducted Power (dBm) | Power Drift (dB) | Measured 1g SAR (W/kg) | Limits (W/Kg) | Results |
|-------|-------|------------|-------------|-----------------|-----------------------|------------------|------------------------|---------------|---------|
| SP70R | PCS | 512 (Low) | 1850.2 | GMSK | 29.14 | - | - | - | - |
| | | 661(Mid) | 1880.0 | GMSK | 29.17 | - | - | - | - |
| | | 810 (High) | 1909.8 | GMSK | 29.30 | - | - | - | - |
| SP70 | PCS | 512 (Low) | 1850.2 | GMSK | 29.11 | - | - | - | - |
| | | 661(Mid) | 1880.0 | GMSK | 29.11 | -0.057 | 0.131 | 1.6 | Pass |
| | | 810 (High) | 1909.8 | GMSK | 29.24 | - | - | - | - |

11.6 Keypad Down with 1.5 cm Gap

| Model | Bands | Chan. | Freq. (MHz) | Modulation type | Conducted Power (dBm) | Power Drift (dB) | Measured 1g SAR (W/kg) | Limits (W/Kg) | Results |
|-------|--------------------|-------------------|---------------|-----------------|-----------------------|------------------|------------------------|---------------|-------------|
| SP70R | PCS | 512 (Low) | 1850.2 | GMSK | 29.14 | - | - | - | - |
| | | 661(Mid) | 1880.0 | GMSK | 29.17 | - | - | - | - |
| | | 810 (High) | 1909.8 | GMSK | 29.30 | - | - | - | - |
| | PCS with Bluetooth | 810 (High) | 1909.8 | GMSK | 29.30 | -0.16 | 0.665 | 1.6 | Pass |
| SP70 | PCS | 512 (Low) | 1850.2 | GMSK | 29.11 | -0.036 | 0.495 | 1.6 | Pass |
| | | 661(Mid) | 1880.0 | GMSK | 29.11 | -0.068 | 0.548 | 1.6 | Pass |
| | | 810 (High) | 1909.8 | GMSK | 29.24 | -0.121 | 0.61 | 1.6 | Pass |
| | PCS with Bluetooth | 810 (High) | 1909.8 | GMSK | 29.24 | -0.052 | 0.651 | 1.6 | Pass |

Remark:

Software ensures that GSM and WLAN can not transmit simultaneously.

Test Engineer : John Tsai



12. References

- [1] FCC 47 CFR Part 2 “Frequency Allocations and Radio Treaty Matters; General Rules and Regulations”
- [2] IEEE Std. P1528-2003, “Recommended Practice for Determining the Peak Spatial-Average Specific Absorption Rate (SAR) in the Human Head from Wireless Communications Devices: Measurement Techniques”, April 21, 2003
- [3] Supplement C (Edition 01-01) to OET Bulletin 65 (Edition 97-01), “Additional Information for Evaluating Compliance of Mobile and Portable Devices with FCC Limits for Human Exposure to RF Emissions”, June 2001
- [4] IEEE Std. C95.3-2002, “IEEE Recommended Practice for the Measurement of Potentially Hazardous Electromagnetic Fields-RF and Microwave”, 2002
- [5] IEEE Std. C95.1-1999, “IEEE Standard for Safety Levels with Respect to Human Exposure to Radio Frequency Electromagnetic Fields, 3 kHz to 300 GHz”, 1999
- [6] Robert J. Renka, “Multivariate Interpolation Of Large Sets Of Scattered Data”, University of North Texas ACM Transactions on Mathematical Software, vol. 14, no. 2, June 1988, pp. 139-148
- [7] DAYS4 System Handbook



Appendix A - System Performance Check Data

Kinpo/SP70R

Test Laboratory: Sporton International Inc. SAR Testing Lab

Date/Time: 4/27/2006 4:39:22 PM

System Check_Head_1900MHz_20060427

DUT: Dipole 1900 MHz; Type: D1900V2; Serial: D1900V2 - SN:5d041

Communication System: CW; Frequency: 1900 MHz; Duty Cycle: 1:1

Medium: HSL_1900 Medium parameters used: $f = 1900$ MHz; $\sigma = 1.43$ mho/m; $\epsilon_r = 39.2$; $\rho = 1000$ kg/m³

Ambient Temperature : 22.8 °C; Liquid Temperature : 20.8 °C

DASY4 Configuration:

- Probe: ET3DV6 - SN1788; ConvF(5.16, 5.16, 5.16); Calibrated: 9/30/2004
- Sensor-Surface: 4mm (Mechanical And Optical Surface Detection) Sensor-Surface: 4mm (Mechanical Surface Detection)
- Electronics: DAE3 Sn577; Calibrated: 11/11/2005
- Phantom: SAM-B; Type: QD 000 P40 C; Serial: TP-1383
- Measurement SW: DASY4, V4.6 Build 23; Postprocessing SW: SEMCAD, V1.8 Build 161

Pin=100mW/Area Scan (91x91x1); Measurement grid: dx=10mm, dy=10mm

Maximum value of SAR (interpolated) = 4.48 mW/g

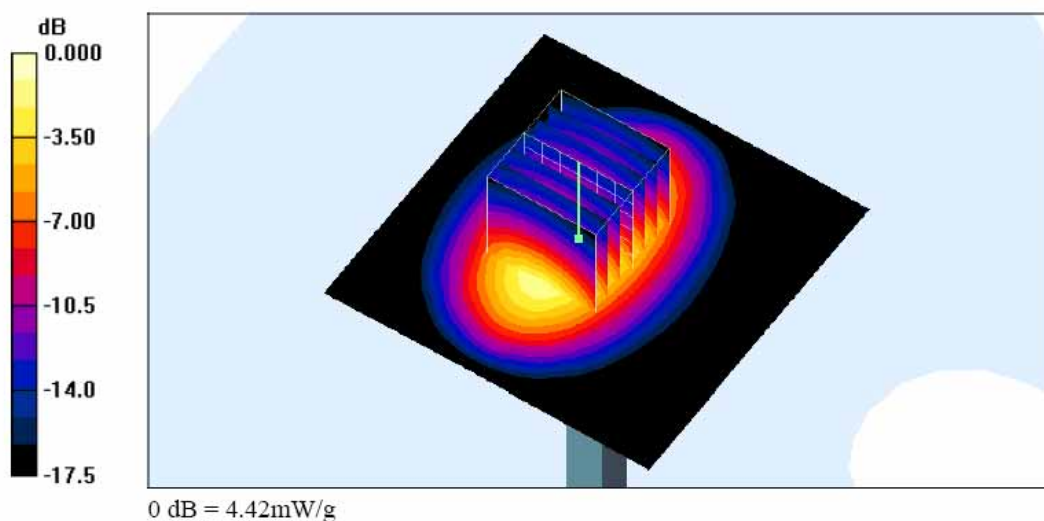
Pin=100mW/Zoom Scan (7x7x7)/Cube 0; Measurement grid: dx=5mm, dy=5mm, dz=5mm

Reference Value = 54.3 V/m; Power Drift = -0.041 dB

Peak SAR (extrapolated) = 6.84 W/kg

SAR(1 g) = 3.88 mW/g; SAR(10 g) = 2.03 mW/g

Maximum value of SAR (measured) = 4.42 mW/g





Test Laboratory: Sporton International Inc. SAR Testing Lab

Date/Time: 4/27/2006 6:21:24 PM

System Check_Body_1900MHz_20060427

DUT: Dipole 1900 MHz; Type: D1900V2; Serial: D1900V2 - SN:5d041

Communication System: CW; Frequency: 1900 MHz; Duty Cycle: 1:1

Medium: MSL_1900 Medium parameters used: $f = 1900$ MHz; $\sigma = 1.58$ mho/m; $\epsilon_r = 52.6$; $\rho = 1000$ kg/m³

Ambient Temperature : 22.1 °C; Liquid Temperature : 20.8 °C

DASY4 Configuration:

- Probe: ET3DV6 - SN1788; ConvF(4.56, 4.56, 4.56); Calibrated: 9/30/2004
- Sensor-Surface: 4mm (Mechanical And Optical Surface Detection) Sensor-Surface: 4mm (Mechanical Surface Detection)
- Electronics: DAE3 Sn577; Calibrated: 11/11/2005
- Phantom: SAM-B; Type: QD 000 P40 C; Serial: TP-1383
- Measurement SW: DASY4, V4.6 Build 23; Postprocessing SW: SEMCAD, V1.8 Build 161

Pin=100mW/Area Scan (91x91x1): Measurement grid: dx=10mm, dy=10mm

Maximum value of SAR (interpolated) = 4.80 mW/g

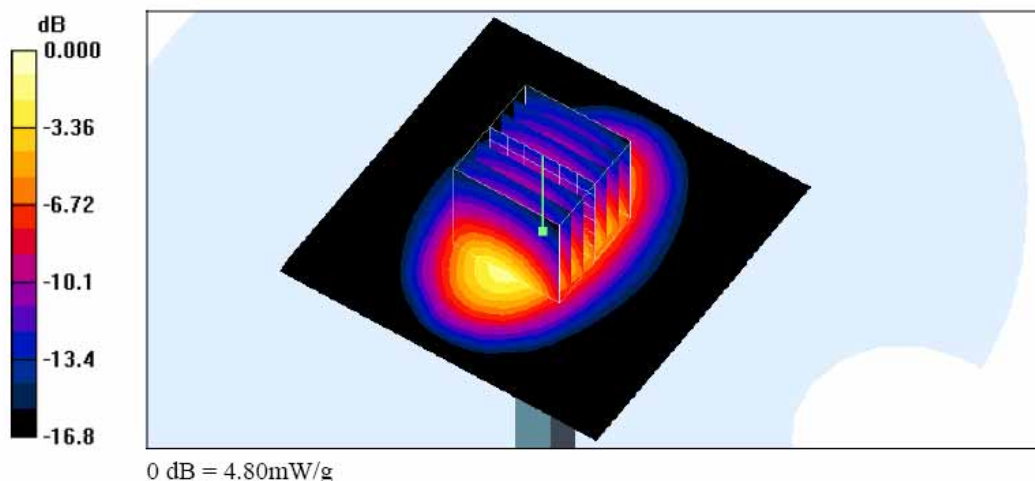
Pin=100mW/Zoom Scan (7x7x7)/Cube 0: Measurement grid: dx=5mm, dy=5mm, dz=5mm

Reference Value = 58.9 V/m; Power Drift = -0.007 dB

Peak SAR (extrapolated) = 7.00 W/kg

SAR(1 g) = 4.2 mW/g; SAR(10 g) = 2.24 mW/g

Maximum value of SAR (measured) = 4.80 mW/g





Kinpo/SP70

Test Laboratory: Sporton International Inc. SAR Testing Lab

Date/Time: 1/17/2006 8:23:41 PM

System Check_Head_1900MHz_20060117

DUT: Dipole 1900 MHz; Type: D1900V2; Serial: D1900V2 - SN:5d041

Communication System: CW; Frequency: 1900 MHz; Duty Cycle: 1:1

Medium: HSL_1900 Medium parameters used: $f = 1900$ MHz; $\sigma = 1.45$ mho/m; $\epsilon_r = 39$; $\rho = 1000$ kg/m³

Ambient Temperature : 22.4 °C; Liquid Temperature : 22.0 °C

DASY4 Configuration:

- Probe: ET3DV6 - SN1788; ConvF(5.16, 5.16, 5.16); Calibrated: 9/30/2004
- Sensor-Surface: 4mm (Mechanical And Optical Surface Detection) Sensor-Surface: 4mm (Mechanical Surface Detection)
- Electronics: DAE3 Sn577; Calibrated: 11/11/2005
- Phantom: SAM-A; Type: QD 000 P40 C; Serial: TP-1303
- Measurement SW: DASY4, V4.6 Build 23; Postprocessing SW: SEMCAD, V1.8 Build 160

Pin=100mW/Area Scan (41x41x1): Measurement grid: dx=20mm, dy=20mm

Maximum value of SAR (interpolated) = 4.57 mW/g

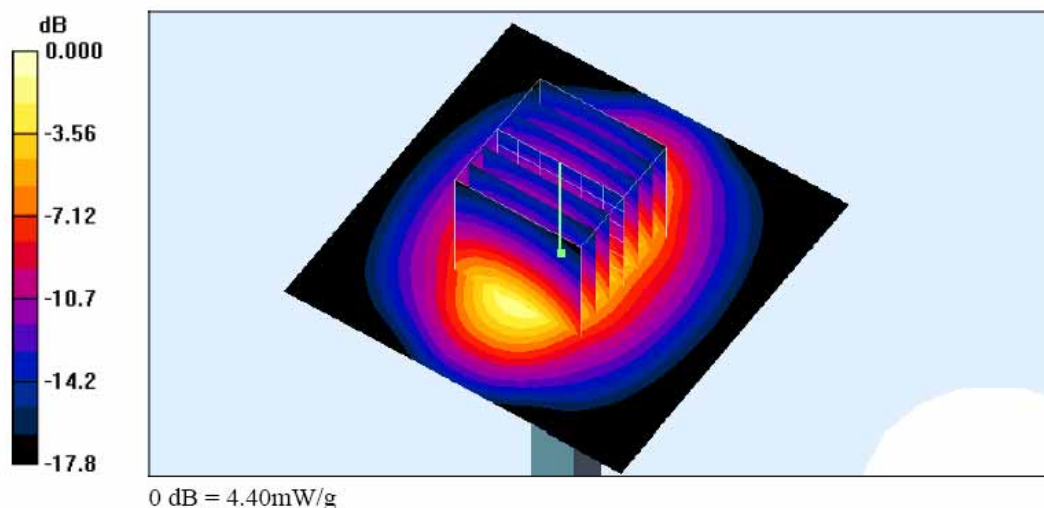
Pin=100mW/Zoom Scan (7x7x7)/Cube 0: Measurement grid: dx=5mm, dy=5mm, dz=5mm

Reference Value = 59.3 V/m; Power Drift = -0.013 dB

Peak SAR (extrapolated) = 6.86 W/kg

SAR(1 g) = 3.9 mW/g; SAR(10 g) = 2.04 mW/g

Maximum value of SAR (measured) = 4.40 mW/g





Test Laboratory: Sporton International Inc. SAR Testing Lab

Date/Time: 1/19/2006 6:47:54 PM

System Check_Body_1900MHz_20060119

DUT: Dipole 1900 MHz; Type: D1900V2; Serial: D1900V2 - SN:5d041

Communication System: CW; Frequency: 1900 MHz; Duty Cycle: 1:1

Medium: MSL_1900 Medium parameters used: $f = 1900$ MHz; $\sigma = 1.58$ mho/m; $\epsilon_r = 52.7$; $\rho = 1000$ kg/m³

Ambient Temperature : 21.8 °C; Liquid Temperature : 21.4 °C

DASY4 Configuration:

- Probe: ET3DV6 - SN1788; ConvF(4.56, 4.56, 4.56); Calibrated: 9/30/2004
- Sensor-Surface: 4mm (Mechanical And Optical Surface Detection) Sensor-Surface: 4mm (Mechanical Surface Detection)
- Electronics: DAE3 Sn577; Calibrated: 11/11/2005
- Phantom: SAM-B; Type: QD 000 P40 C; Serial: TP-1383
- Measurement SW: DASY4, V4.6 Build 23; Postprocessing SW: SEMCAD, V1.8 Build 160

Pin=100mW/Area Scan (91x91x1): Measurement grid: dx=10mm, dy=10mm

Maximum value of SAR (interpolated) = 4.91 mW/g

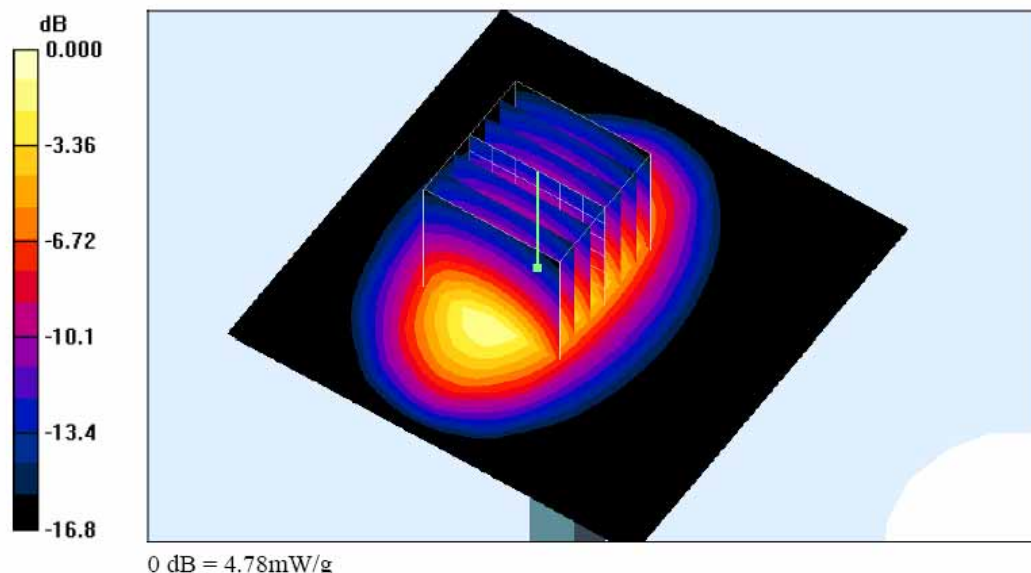
Pin=100mW/Zoom Scan (7x7x7)/Cube 0: Measurement grid: dx=5mm, dy=5mm, dz=5mm

Reference Value = 53.1 V/m; Power Drift = -0.010 dB

Peak SAR (extrapolated) = 6.98 W/kg

SAR(1 g) = 4.18 mW/g; SAR(10 g) = 2.23 mW/g

Maximum value of SAR (measured) = 4.78 mW/g





Appendix B - SAR Measurement Data

Kinpo/SP70R

Test Laboratory: Sporton International Inc. SAR Testing Lab

Date/Time: 4/27/2006 5:04:06 PM

Left Tilted_PCS Ch810_20060427

DUT: 631719; Type: Pocket PC Phone

Communication System: PCS; Frequency: 1909.8 MHz; Duty Cycle: 1:8.3

Medium: HSL_1900 Medium parameters used: $f = 1910$ MHz; $\sigma = 1.44$ mho/m; $\epsilon_r = 39.1$; $\rho = 1000$ kg/m³

Ambient Temperature : 22.8 °C ; Liquid Temperature : 20.8 °C

DASY4 Configuration:

- Probe: ET3DV6 - SN1788; ConvF(5.16, 5.16, 5.16); Calibrated: 9/30/2004
- Sensor-Surface: 4mm (Mechanical And Optical Surface Detection)
- Electronics: DAE3 Sn577; Calibrated: 11/11/2005
- Phantom: SAM-B; Type: QD 000 P40 C; Serial: TP-1383
- Measurement SW: DASY4, V4.6 Build 23; Postprocessing SW: SEMCAD, V1.8 Build 161

Ch810/Area Scan (41x81x1): Measurement grid: dx=15mm, dy=15mm

Maximum value of SAR (interpolated) = 0.204 mW/g

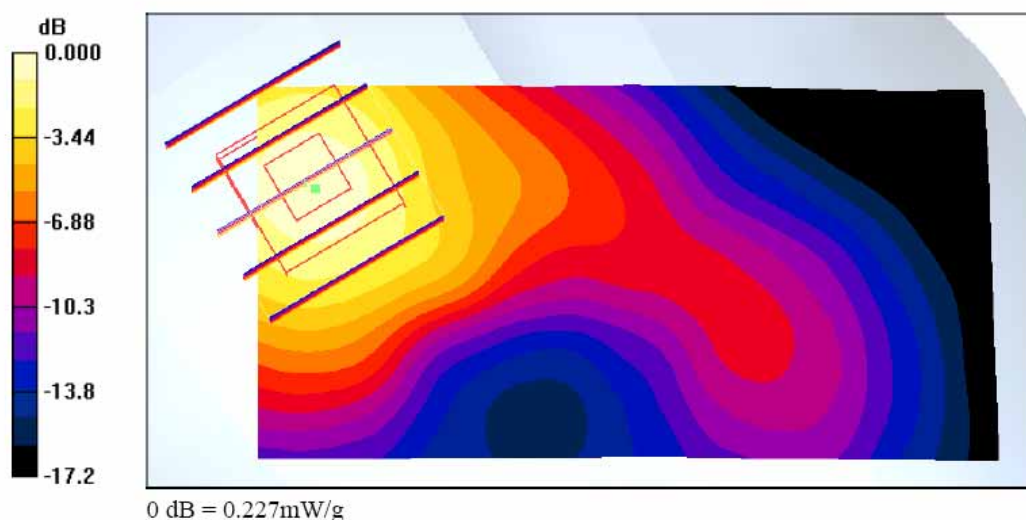
Ch810/Zoom Scan (5x5x7)/Cube 0: Measurement grid: dx=8mm, dy=8mm, dz=5mm

Reference Value = 9.97 V/m; Power Drift = 0.045 dB

Peak SAR (extrapolated) = 0.341 W/kg

SAR(1 g) = 0.202 mW/g; SAR(10 g) = 0.112 mW/g

Maximum value of SAR (measured) = 0.227 mW/g





Test Laboratory: Sporton International Inc. SAR Testing Lab

Date/Time: 4/27/2006 7:32:53 PM

Body_PCS Ch810_Keypad Down with 1.5cm Gap_20060427_Bluetooth On**DUT: 631719; Type: Pocket PC Phone**

Communication System: PCS; Frequency: 1909.8 MHz; Duty Cycle: 1:4

Medium: MSL_1900 Medium parameters used: $f = 1910 \text{ MHz}$; $\sigma = 1.59 \text{ mho/m}$; $\epsilon_r = 52.6$; $\rho = 1000 \text{ kg/m}^3$

Ambient Temperature : 22.6 °C; Liquid Temperature : 20.8 °C

DASY4 Configuration:

- Probe: ET3DV6 - SN1788; ConvF(4.56, 4.56, 4.56); Calibrated: 9/30/2004
- Sensor-Surface: 4mm (Mechanical And Optical Surface Detection)
- Electronics: DAE3 Sn577; Calibrated: 11/11/2005
- Phantom: SAM-B; Type: QD 000 P40 C; Serial: TP-1383
- Measurement SW: DASY4, V4.6 Build 23; Postprocessing SW: SEMCAD, V1.8 Build 161

Ch810/Area Scan (51x91x1): Measurement grid: $dx=15\text{mm}$, $dy=15\text{mm}$

Maximum value of SAR (interpolated) = 0.758 mW/g

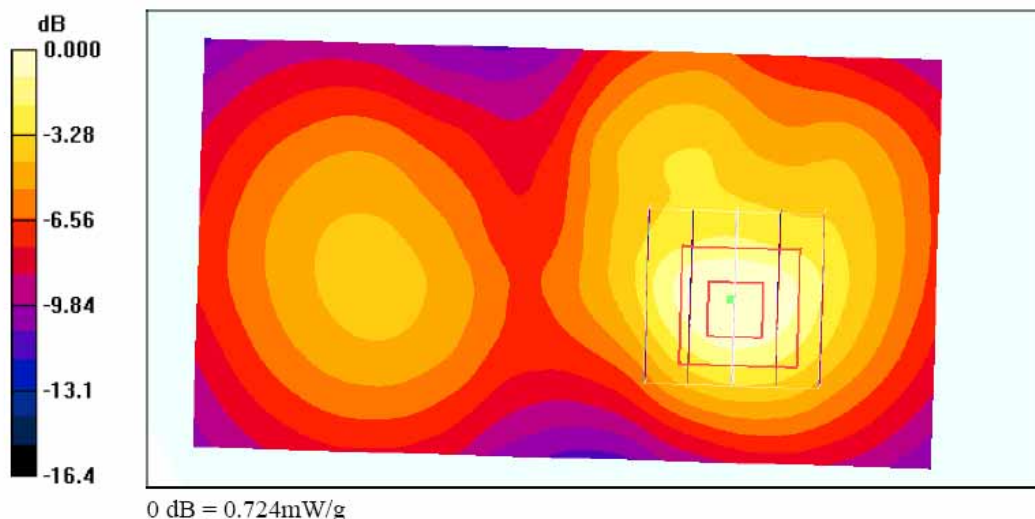
Ch810/Zoom Scan (5x5x7)/Cube 0: Measurement grid: $dx=8\text{mm}$, $dy=8\text{mm}$, $dz=5\text{mm}$

Reference Value = 18.6 V/m; Power Drift = -0.160 dB

Peak SAR (extrapolated) = 1.09 W/kg

SAR(1 g) = 0.665 mW/g; SAR(10 g) = 0.380 mW/g

Maximum value of SAR (measured) = 0.724 mW/g





Test Laboratory: Sporton International Inc. SAR Testing Lab

Date/Time: 4/27/2006 5:04:06 PM

Left Tilted_PCS Ch810_20060427_2D

DUT: 631719; Type: Pocket PC Phone

Communication System: PCS; Frequency: 1909.8 MHz; Duty Cycle: 1:8.3

Medium: HSL_1900 Medium parameters used: $f = 1910$ MHz; $\sigma = 1.44$ mho/m; $\epsilon_r = 39.1$; $\rho = 1000$ kg/m³

Ambient Temperature : 22.8 °C; Liquid Temperature : 20.8 °C

DASY4 Configuration:

- Probe: ET3DV6 - SN1788; ConvF(5.16, 5.16, 5.16); Calibrated: 9/30/2004
- Sensor-Surface: 4mm (Mechanical And Optical Surface Detection)
- Electronics: DAE3 Sn577; Calibrated: 11/11/2005
- Phantom: SAM-B; Type: QD 000 P40 C; Serial: TP-1383
- Measurement SW: DASY4, V4.6 Build 23; Postprocessing SW: SEMCAD, V1.8 Build 161

Ch810/Area Scan (41x81x1): Measurement grid: dx=15mm, dy=15mm

Maximum value of SAR (interpolated) = 0.204 mW/g

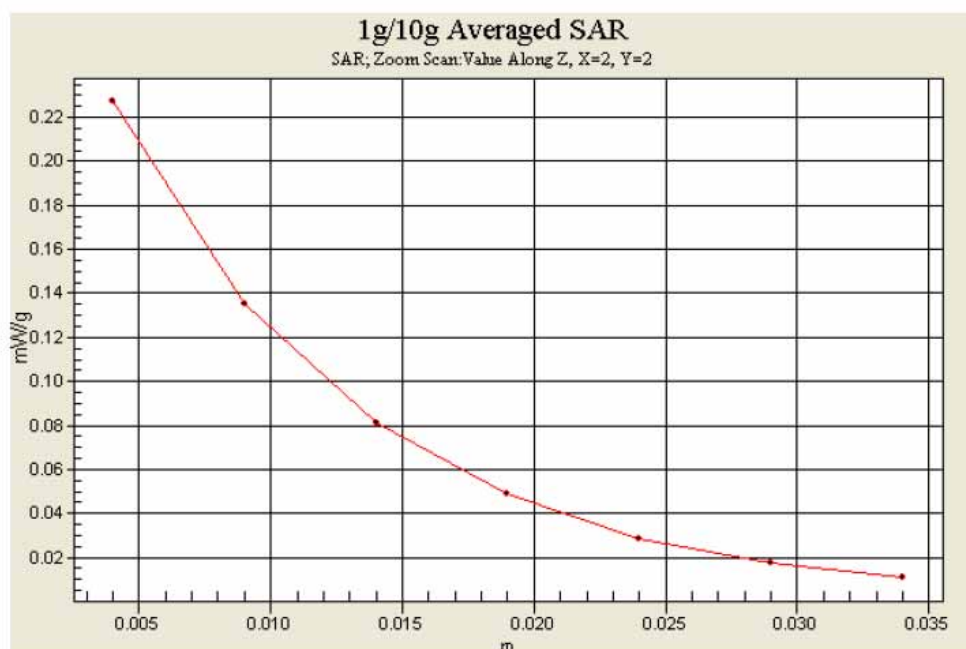
Ch810/Zoom Scan (5x5x7)/Cube 0: Measurement grid: dx=8mm, dy=8mm, dz=5mm

Reference Value = 9.97 V/m; Power Drift = 0.045 dB

Peak SAR (extrapolated) = 0.341 W/kg

SAR(1 g) = 0.202 mW/g; SAR(10 g) = 0.112 mW/g

Maximum value of SAR (measured) = 0.227 mW/g





Test Laboratory: Sporton International Inc. SAR Testing Lab

Date/Time: 4/27/2006 7:32:53 PM

Body_PCS Ch810_Keypad Down with 1.5cm Gap_20060427_Bluetooth On_2D**DUT: 631719; Type: Pocket PC Phone**

Communication System: PCS; Frequency: 1909.8 MHz; Duty Cycle: 1:4

Medium: MSL_1900 Medium parameters used: $f = 1910$ MHz; $\sigma = 1.59$ mho/m; $\epsilon_r = 52.6$; $\rho = 1000$ kg/m³

Ambient Temperature : 22.6 °C; Liquid Temperature : 20.8 °C

DASY4 Configuration:

- Probe: ET3DV6 - SN1788; ConvF(4.56, 4.56, 4.56); Calibrated: 9/30/2004
- Sensor-Surface: 4mm (Mechanical And Optical Surface Detection)
- Electronics: DAE3 Sn577; Calibrated: 11/11/2005
- Phantom: SAM-B; Type: QD 000 P40 C; Serial: TP-1383
- Measurement SW: DASY4, V4.6 Build 23; Postprocessing SW: SEMCAD, V1.8 Build 161

Ch810/Area Scan (51x91x1): Measurement grid: dx=15mm, dy=15mm

Maximum value of SAR (interpolated) = 0.758 mW/g

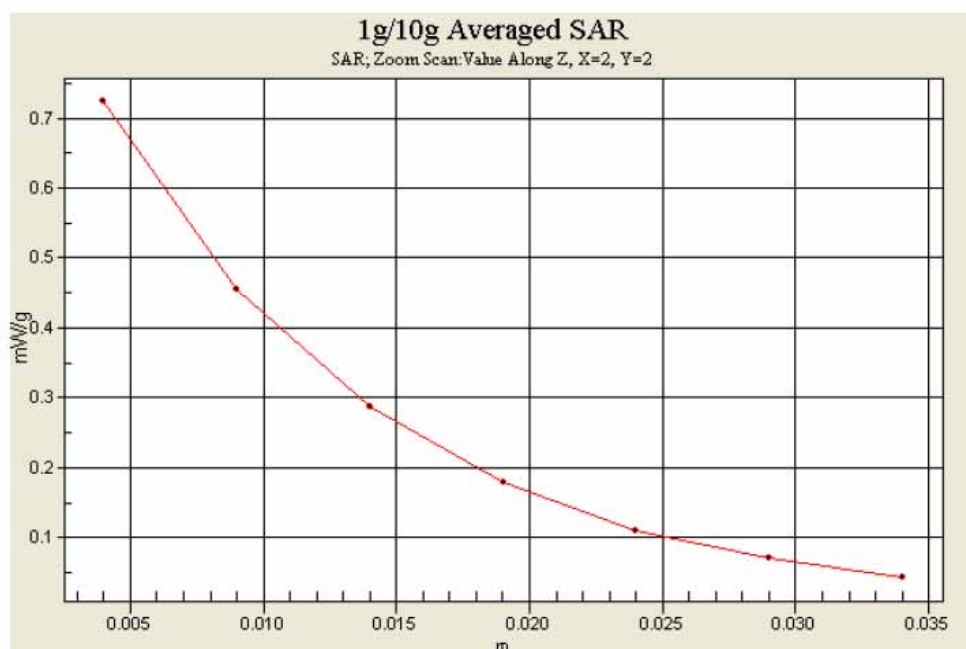
Ch810/Zoom Scan (5x5x7)/Cube 0: Measurement grid: dx=8mm, dy=8mm, dz=5mm

Reference Value = 18.6 V/m; Power Drift = -0.160 dB

Peak SAR (extrapolated) = 1.09 W/kg

SAR(1 g) = 0.665 mW/g; SAR(10 g) = 0.380 mW/g

Maximum value of SAR (measured) = 0.724 mW/g



**Kinpo/SP70**

Test Laboratory: Sporton International Inc. SAR Testing Lab

Date/Time: 1/17/2006 9:26:59 PM

Right Cheek_PCS Ch661_20060117**DUT: 610605; Type: Smart-Phone; Serial: 352021002651792**

Communication System: PCS; Frequency: 1880 MHz; Duty Cycle: 1:8.3

Medium: HSL_1900 Medium parameters used: $f = 1880$ MHz; $\sigma = 1.44$ mho/m; $\epsilon_r = 39.1$; $\rho = 1000$ kg/m³

Ambient Temperature : 21.4 °C; Liquid Temperature : 21.0 °C

DASY4 Configuration:

- Probe: ET3DV6 - SN1788; ConvF(5.16, 5.16, 5.16); Calibrated: 9/30/2004
- Sensor-Surface: 4mm (Mechanical And Optical Surface Detection)
- Electronics: DAE3 Sn577; Calibrated: 11/11/2005
- Phantom: SAM-A; Type: QD 000 P40 C; Serial: TP-1303
- Measurement SW: DASY4, V4.6 Build 23; Postprocessing SW: SEMCAD, V1.8 Build 160

Ch661/Area Scan (41x81x1): Measurement grid: dx=15mm, dy=15mm

Maximum value of SAR (interpolated) = 0.132 mW/g

Ch661/Zoom Scan (5x5x7)/Cube 0: Measurement grid: dx=8mm, dy=8mm, dz=5mm

Reference Value = 8.92 V/m; Power Drift = -0.122 dB

Peak SAR (extrapolated) = 0.166 W/kg

SAR(1 g) = 0.115 mW/g; SAR(10 g) = 0.074 mW/g

Maximum value of SAR (measured) = 0.124 mW/g

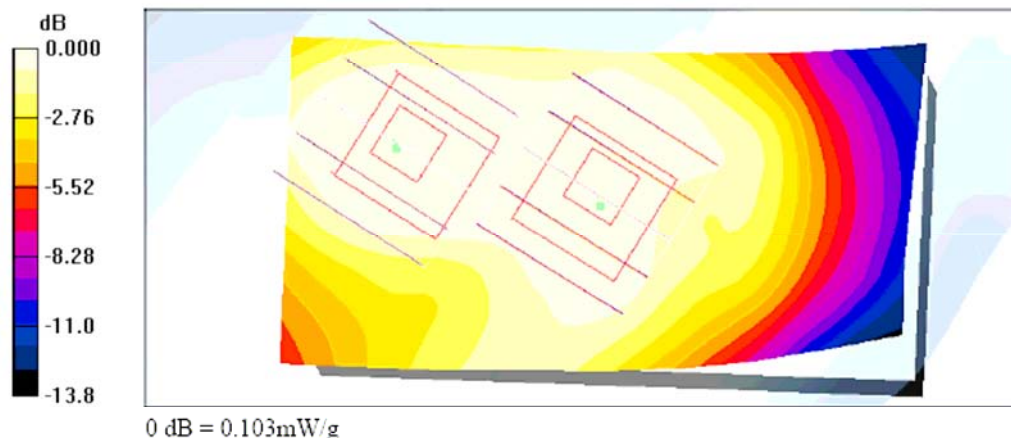
Ch661/Zoom Scan (5x5x7)/Cube 1: Measurement grid: dx=8mm, dy=8mm, dz=5mm

Reference Value = 8.92 V/m; Power Drift = -0.122 dB

Peak SAR (extrapolated) = 0.131 W/kg

SAR(1 g) = 0.096 mW/g; SAR(10 g) = 0.067 mW/g

Maximum value of SAR (measured) = 0.103 mW/g





Test Laboratory: Sporton International Inc. SAR Testing Lab

Date/Time: 1/17/2006 9:47:37 PM

Right Tilted_PCS Ch661_20060117**DUT: 610605; Type: Smart-Phone; Serial: 352021002651792**

Communication System: PCS; Frequency: 1880 MHz; Duty Cycle: 1:8.3

Medium: HSL_1900 Medium parameters used: $f = 1880$ MHz; $\sigma = 1.44$ mho/m; $\epsilon_r = 39.1$; $\rho = 1000$ kg/m³

Ambient Temperature : 21.4 °C; Liquid Temperature : 21.0 °C

DASY4 Configuration:

- Probe: ET3DV6 - SN1788; ConvF(5.16, 5.16, 5.16); Calibrated: 9/30/2004
- Sensor-Surface: 4mm (Mechanical And Optical Surface Detection)
- Electronics: DAE3 Sn577; Calibrated: 11/11/2005
- Phantom: SAM-A; Type: QD 000 P40 C; Serial: TP-1303
- Measurement SW: DASY4, V4.6 Build 23; Postprocessing SW: SEMCAD, V1.8 Build 160

Ch661/Area Scan (41x81x1): Measurement grid: dx=15mm, dy=15mm

Maximum value of SAR (interpolated) = 0.160 mW/g

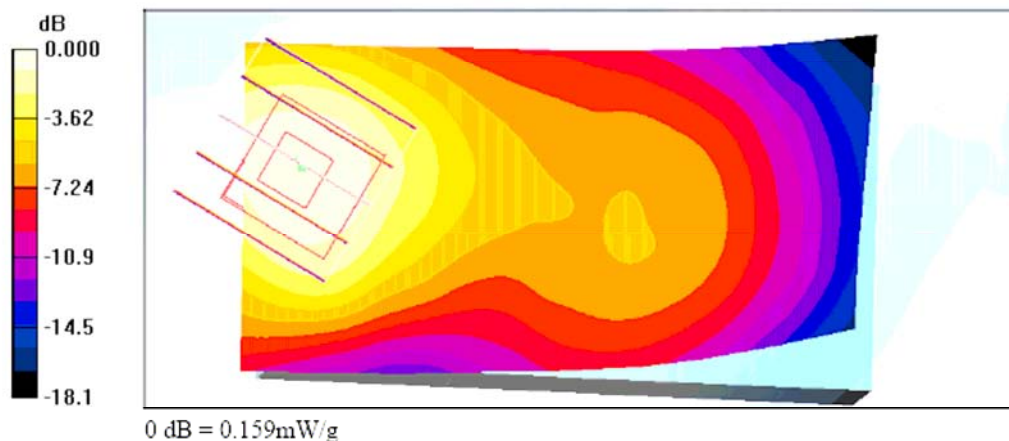
Ch661/Zoom Scan (5x5x7)/Cube 0: Measurement grid: dx=8mm, dy=8mm, dz=5mm

Reference Value = 10.5 V/m; Power Drift = 0.038 dB

Peak SAR (extrapolated) = 0.224 W/kg

SAR(1 g) = 0.146 mW/g; SAR(10 g) = 0.089 mW/g

Maximum value of SAR (measured) = 0.159 mW/g





Test Laboratory: Sporton International Inc. SAR Testing Lab

Date/Time: 1/17/2006 11:21:08 PM

Left Cheek_PCS Ch661_20060117**DUT: 610605; Type: Smart-Phone; Serial: 352021002651792**

Communication System: PCS; Frequency: 1880 MHz; Duty Cycle: 1:8.3

Medium: HSL_1900 Medium parameters used: $f = 1880$ MHz; $\sigma = 1.44$ mho/m; $\epsilon_r = 39.1$; $\rho = 1000$ kg/m³

Ambient Temperature : 21.4 °C; Liquid Temperature : 21.0 °C

DASY4 Configuration:

- Probe: ET3DV6 - SN1788; ConvF(5.16, 5.16, 5.16); Calibrated: 9/30/2004
- Sensor-Surface: 4mm (Mechanical And Optical Surface Detection)
- Electronics: DAE3 Sn577; Calibrated: 11/11/2005
- Phantom: SAM-A; Type: QD 000 P40 C; Serial: TP-1303
- Measurement SW: DASY4, V4.6 Build 23; Postprocessing SW: SEMCAD, V1.8 Build 160

Ch661/Area Scan (41x81x1): Measurement grid: dx=15mm, dy=15mm

Maximum value of SAR (interpolated) = 0.194 mW/g

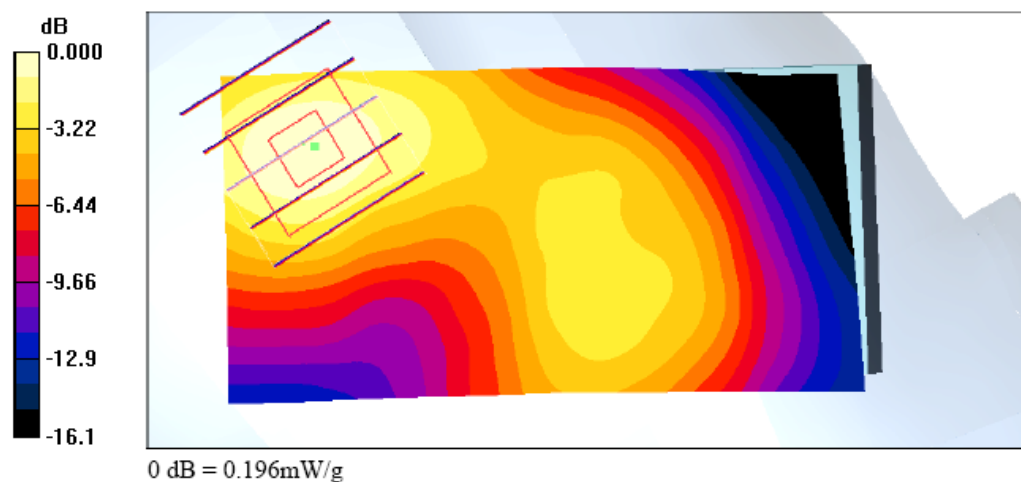
Ch661/Zoom Scan (5x5x7)/Cube 0: Measurement grid: dx=8mm, dy=8mm, dz=5mm

Reference Value = 8.99 V/m; Power Drift = -0.192 dB

Peak SAR (extrapolated) = 0.283 W/kg

SAR(1 g) = 0.177 mW/g; SAR(10 g) = 0.102 mW/g

Maximum value of SAR (measured) = 0.196 mW/g





Test Laboratory: Sporton International Inc. SAR Testing Lab

Date/Time: 1/18/2006 12:22:41 AM

Left Tilted_PCS Ch810_20060117**DUT: 610605; Type: Smart-Phone; Serial: 352021002651792**

Communication System: PCS; Frequency: 1909.8 MHz; Duty Cycle: 1:8.3

Medium: HSL_1900 Medium parameters used: $f = 1910$ MHz; $\sigma = 1.46$ mho/m; $\epsilon_r = 39$; $\rho = 1000$ kg/m³

Ambient Temperature : 21.4 °C; Liquid Temperature : 21.0 °C

DASY4 Configuration:

- Probe: ET3DV6 - SN1788; ConvF(5.16, 5.16, 5.16); Calibrated: 9/30/2004
- Sensor-Surface: 4mm (Mechanical And Optical Surface Detection)
- Electronics: DAE3 Sn577; Calibrated: 11/11/2005
- Phantom: SAM-A; Type: QD 000 P40 C; Serial: TP-1303
- Measurement SW: DASY4, V4.6 Build 23; Postprocessing SW: SEMCAD, V1.8 Build 160

Ch810/Area Scan (41x81x1): Measurement grid: dx=15mm, dy=15mm

Maximum value of SAR (interpolated) = 0.201 mW/g

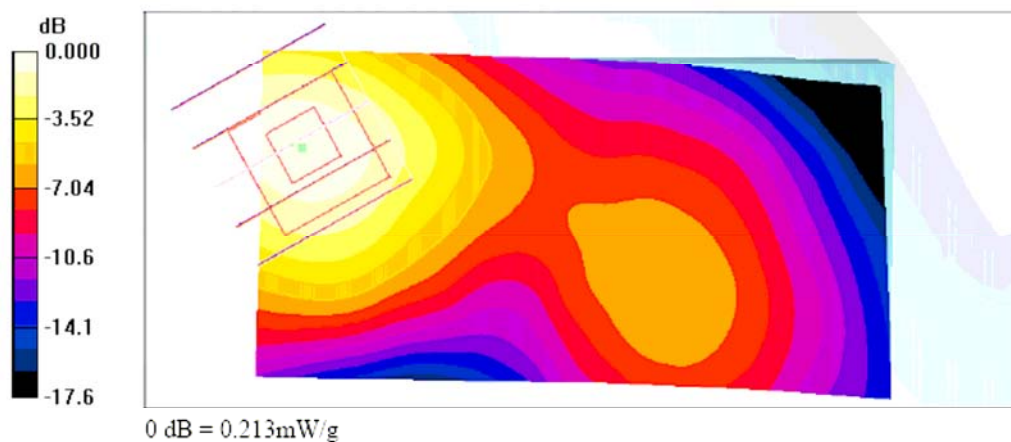
Ch810/Zoom Scan (5x5x7)/Cube 0: Measurement grid: dx=8mm, dy=8mm, dz=5mm

Reference Value = 10.4 V/m; Power Drift = 0.008 dB

Peak SAR (extrapolated) = 0.321 W/kg

SAR(1 g) = 0.191 mW/g; SAR(10 g) = 0.109 mW/g

Maximum value of SAR (measured) = 0.213 mW/g





Test Laboratory: Sporton International Inc. SAR Testing Lab

Date/Time: 1/18/2006 12:38:22 AM

Left Tilted_PCS Ch810_20060117_BT On**DUT:** 610605; **Type:** Smart-Phone; **Serial:** 352021002651792

Communication System: PCS; Frequency: 1909.8 MHz; Duty Cycle: 1:8.3

Medium: HSL_1900 Medium parameters used: $f = 1910$ MHz; $\sigma = 1.46$ mho/m; $\epsilon_r = 39$; $\rho = 1000$ kg/m³

Ambient Temperature : 21.4 °C; Liquid Temperature : 21.0 °C

DASY4 Configuration:

- Probe: ET3DV6 - SN1788; ConvF(5.16, 5.16, 5.16); Calibrated: 9/30/2004
- Sensor-Surface: 4mm (Mechanical And Optical Surface Detection)
- Electronics: DAE3 Sn577; Calibrated: 11/11/2005
- Phantom: SAM-A; Type: QD 000 P40 C; Serial: TP-1303
- Measurement SW: DASY4, V4.6 Build 23; Postprocessing SW: SEMCAD, V1.8 Build 160

Ch810/Area Scan (41x81x1): Measurement grid: dx=15mm, dy=15mm

Maximum value of SAR (interpolated) = 0.196 mW/g

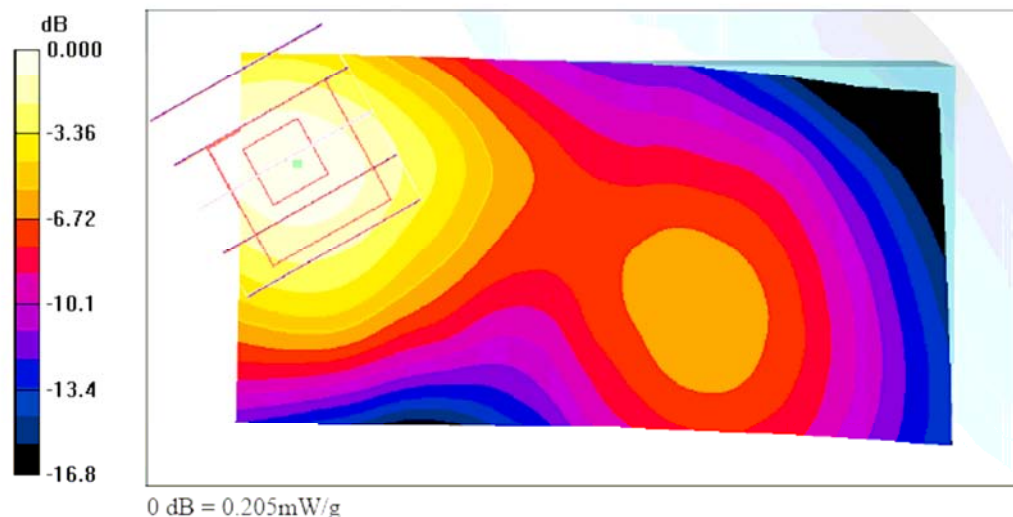
Ch810/Zoom Scan (5x5x7)/Cube 0: Measurement grid: dx=8mm, dy=8mm, dz=5mm

Reference Value = 10.3 V/m; Power Drift = -0.119 dB

Peak SAR (extrapolated) = 0.304 W/kg

SAR(1 g) = 0.183 mW/g; SAR(10 g) = 0.105 mW/g

Maximum value of SAR (measured) = 0.205 mW/g





Test Laboratory: Sporton International Inc. SAR Testing Lab

Date/Time: 1/19/2006 7:27:41 PM

Body_PCS Ch661_Keypad Up with 1.5cm Gap_20060119**DUT: 610605; Type: Smart-Phone; Serial: 352021002651792**

Communication System: PCS 1900; Frequency: 1880 MHz; Duty Cycle: 1:4

Medium: MSL_1900 Medium parameters used: $f = 1880$ MHz; $\sigma = 1.56$ mho/m; $\epsilon_r = 52.7$; $\rho = 1000$ kg/m³

Ambient Temperature : 21.9 °C; Liquid Temperature : 21.6 °C

DASY4 Configuration:

- Probe: ET3DV6 - SN1788; ConvF(4.56, 4.56, 4.56); Calibrated: 9/30/2004
- Sensor-Surface: 4mm (Mechanical And Optical Surface Detection)
- Electronics: DAE3 Sn577; Calibrated: 11/11/2005
- Phantom: SAM-B; Type: QD 000 P40 C; Serial: TP-1383
- Measurement SW: DASY4, V4.6 Build 23; Postprocessing SW: SEMCAD, V1.8 Build 160

Ch661/Area Scan (51x91x1): Measurement grid: dx=15mm, dy=15mm

Maximum value of SAR (interpolated) = 0.141 mW/g

Ch661/Zoom Scan (5x5x7)/Cube 0: Measurement grid: dx=8mm, dy=8mm, dz=5mm

Reference Value = 8.48 V/m; Power Drift = -0.057 dB

Peak SAR (extrapolated) = 0.186 W/kg

SAR(1 g) = 0.131 mW/g; SAR(10 g) = 0.088 mW/g

Maximum value of SAR (measured) = 0.140 mW/g

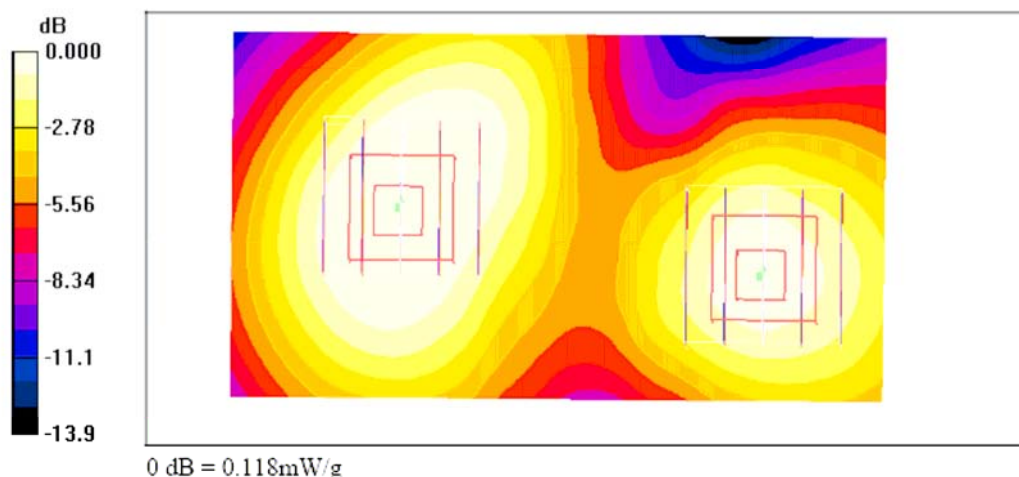
Ch661/Zoom Scan (5x5x7)/Cube 1: Measurement grid: dx=8mm, dy=8mm, dz=5mm

Reference Value = 8.48 V/m; Power Drift = -0.057 dB

Peak SAR (extrapolated) = 0.164 W/kg

SAR(1 g) = 0.109 mW/g; SAR(10 g) = 0.069 mW/g

Maximum value of SAR (measured) = 0.118 mW/g





Test Laboratory: Sporton International Inc. SAR Testing Lab

Date/Time: 1/19/2006 8:45:36 PM

Body_PCS Ch810_Keypad Down with 1.5cm Gap_20060119**DUT: 610605; Type: Smart-Phone; Serial: 352021002651792**

Communication System: PCS 1900; Frequency: 1909.8 MHz; Duty Cycle: 1:4

Medium: MSL_1900 Medium parameters used: $f = 1910$ MHz; $\sigma = 1.59$ mho/m; $\epsilon_r = 52.7$; $\rho = 1000$ kg/m³

Ambient Temperature : 21.9 °C; Liquid Temperature : 21.6 °C

DASY4 Configuration:

- Probe: ET3DV6 - SN1788; ConvF(4.56, 4.56, 4.56); Calibrated: 9/30/2004
- Sensor-Surface: 4mm (Mechanical And Optical Surface Detection)
- Electronics: DAE3 Sn577; Calibrated: 11/11/2005
- Phantom: SAM-B; Type: QD 000 P40 C; Serial: TP-1383
- Measurement SW: DASY4, V4.6 Build 23; Postprocessing SW: SEMCAD, V1.8 Build 160

Ch810/Area Scan (51x91x1): Measurement grid: dx=15mm, dy=15mm

Maximum value of SAR (interpolated) = 0.706 mW/g

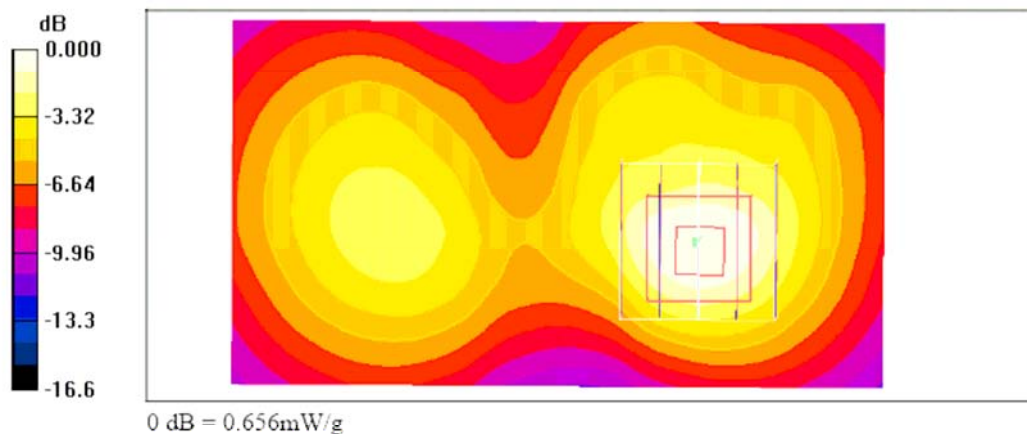
Ch810/Zoom Scan (5x5x7)/Cube 0: Measurement grid: dx=8mm, dy=8mm, dz=5mm

Reference Value = 17.6 V/m; Power Drift = -0.121 dB

Peak SAR (extrapolated) = 1.02 W/kg

SAR(1 g) = 0.610 mW/g; SAR(10 g) = 0.344 mW/g

Maximum value of SAR (measured) = 0.656 mW/g





Test Laboratory: Sporton International Inc. SAR Testing Lab

Date/Time: 1/19/2006 9:12:18 PM

Body_PCS Ch810_Keypad Down with 1.5cm Gap_20060119_BT On**DUT: 610605; Type: Smart-Phone; Serial: 352021002651792**

Communication System: PCS 1900; Frequency: 1909.8 MHz; Duty Cycle: 1:4

Medium: MSL_1900 Medium parameters used: $f = 1910$ MHz; $\sigma = 1.59$ mho/m; $\epsilon_r = 52.7$; $\rho = 1000$ kg/m³

Ambient Temperature : 21.9 °C; Liquid Temperature : 21.6 °C

DASY4 Configuration:

- Probe: ET3DV6 - SN1788; ConvF(4.56, 4.56, 4.56); Calibrated: 9/30/2004
- Sensor-Surface: 4mm (Mechanical And Optical Surface Detection)
- Electronics: DAE3 Sn577; Calibrated: 11/11/2005
- Phantom: SAM-B; Type: QD 000 P40 C; Serial: TP-1383
- Measurement SW: DASY4, V4.6 Build 23; Postprocessing SW: SEMCAD, V1.8 Build 160

Ch810/Area Scan (51x91x1): Measurement grid: dx=15mm, dy=15mm

Maximum value of SAR (interpolated) = 0.729 mW/g

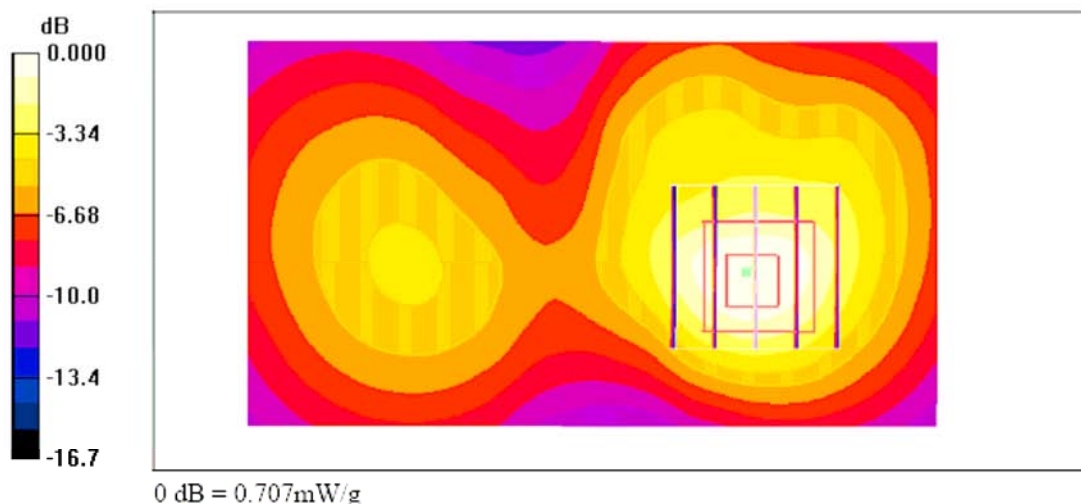
Ch810/Zoom Scan (5x5x7)/Cube 0: Measurement grid: dx=8mm, dy=8mm, dz=5mm

Reference Value = 18.8 V/m; Power Drift = -0.052 dB

Peak SAR (extrapolated) = 1.09 W/kg

SAR(1 g) = 0.651 mW/g; SAR(10 g) = 0.371 mW/g

Maximum value of SAR (measured) = 0.707 mW/g





Test Laboratory: Sporton International Inc. SAR Testing Lab

Date/Time: 1/18/2006 12:22:41 AM

Left Tilted_PCS Ch810_20060117_2D**DUT: 610605; Type: Smart-Phone; Serial: 352021002651792**

Communication System: PCS; Frequency: 1909.8 MHz; Duty Cycle: 1:8.3

Medium: HSL_1900 Medium parameters used: $f = 1910$ MHz; $\sigma = 1.46$ mho/m; $\epsilon_r = 39$; $\rho = 1000$ kg/m³

Ambient Temperature : 21.4 °C; Liquid Temperature : 21.0 °C

DASY4 Configuration:

- Probe: ET3DV6 - SN1788; ConvF(5.16, 5.16, 5.16); Calibrated: 9/30/2004
- Sensor-Surface: 4mm (Mechanical And Optical Surface Detection)
- Electronics: DAE3 Sn577; Calibrated: 11/11/2005
- Phantom: SAM-A; Type: QD 000 P40 C; Serial: TP-1303
- Measurement SW: DASY4, V4.6 Build 23; Postprocessing SW: SEMCAD, V1.8 Build 160

Ch810/Area Scan (41x81x1): Measurement grid: dx=15mm, dy=15mm

Maximum value of SAR (interpolated) = 0.201 mW/g

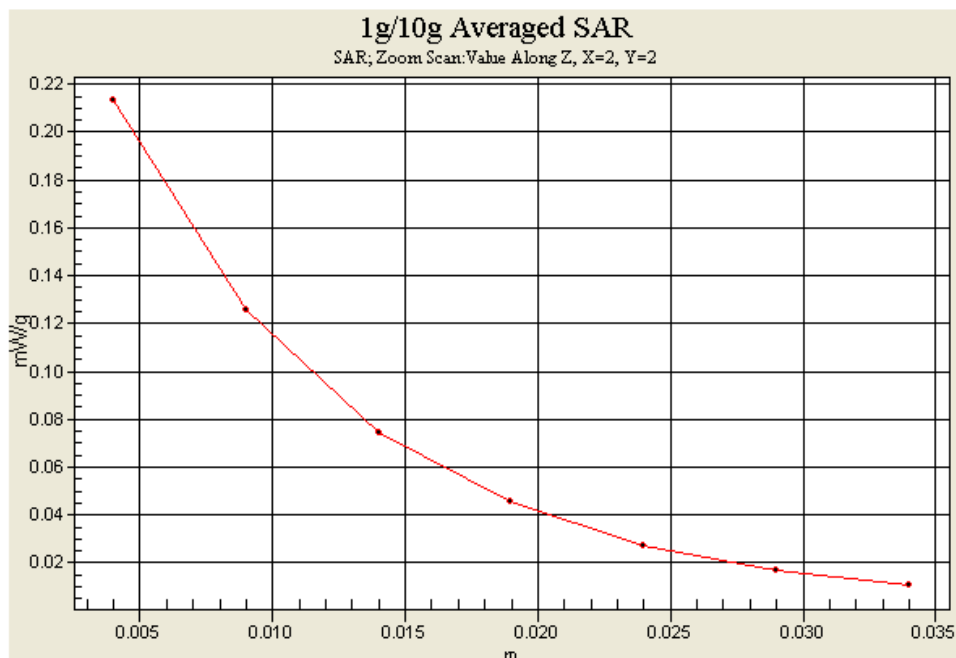
Ch810/Zoom Scan (5x5x7)/Cube 0: Measurement grid: dx=8mm, dy=8mm, dz=5mm

Reference Value = 10.4 V/m; Power Drift = 0.008 dB

Peak SAR (extrapolated) = 0.321 W/kg

SAR(1 g) = 0.191 mW/g; SAR(10 g) = 0.109 mW/g

Maximum value of SAR (measured) = 0.213 mW/g





Test Laboratory: Sporton International Inc. SAR Testing Lab

Date/Time: 1/19/2006 9:12:18 PM

Body_PCS Ch810_Keypad Down with 1.5cm Gap_20060119_GPRS_BT On_2D**DUT: 610605; Type: Smart-Phone; Serial: 352021002651792**

Communication System: PCS 1900; Frequency: 1909.8 MHz; Duty Cycle: 1:4

Medium: MSL_1900 Medium parameters used: $f = 1910$ MHz; $\sigma = 1.59$ mho/m; $\epsilon_r = 52.7$; $\rho = 1000$ kg/m³

Ambient Temperature : 21.9 °C; Liquid Temperature : 21.6 °C

DASY4 Configuration:

- Probe: ET3DV6 - SN1788; ConvF(4.56, 4.56, 4.56); Calibrated: 9/30/2004
- Sensor-Surface: 4mm (Mechanical And Optical Surface Detection)
- Electronics: DAE3 Sn577; Calibrated: 11/11/2005
- Phantom: SAM-B; Type: QD 000 P40 C; Serial: TP-1383
- Measurement SW: DASY4, V4.6 Build 23; Postprocessing SW: SEMCAD, V1.8 Build 160

Ch810/Area Scan (51x91x1): Measurement grid: dx=15mm, dy=15mm

Maximum value of SAR (interpolated) = 0.729 mW/g

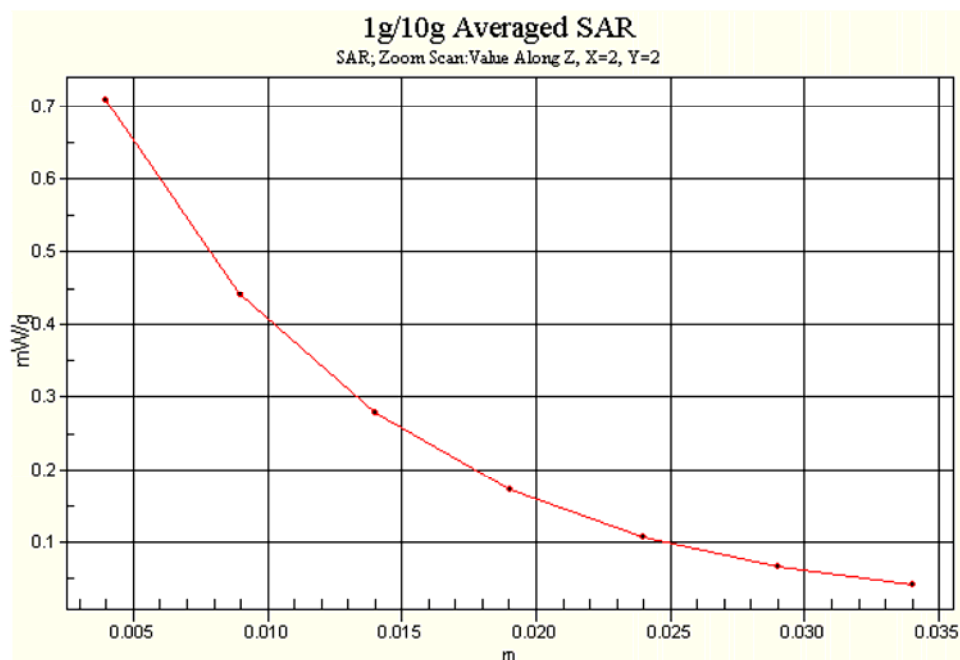
Ch810/Zoom Scan (5x5x7)/Cube 0: Measurement grid: dx=8mm, dy=8mm, dz=5mm

Reference Value = 18.8 V/m; Power Drift = -0.052 dB

Peak SAR (extrapolated) = 1.09 W/kg

SAR(1 g) = 0.651 mW/g; SAR(10 g) = 0.371 mW/g

Maximum value of SAR (measured) = 0.707 mW/g



**Appendix C – Calibration Data**

Calibration Laboratory of
Schmid & Partner
Engineering AG
Zeughausstrasse 43, 8004 Zurich, Switzerland



S Schweizerischer Kalibrierdienst
C Service suisse d'étalonnage
S Servizio svizzero di taratura
S Swiss Calibration Service

Accredited by the Swiss Federal Office of Metrology and Accreditation
The Swiss Accreditation Service is one of the signatories to the EA
Multilateral Agreement for the recognition of calibration certificates

Accreditation No.: SCS 108

Client Sporton (Auden)

Certificate No: D1900V2-5d041_Mar06

CALIBRATION CERTIFICATE

Object D1900V2 - SN: 5d041

Calibration procedure(s) QA CAL-05.v6
Calibration procedure for dipole validation kits

Calibration date: March 21, 2006

Condition of the calibrated item: In Tolerance

This calibration certificate documents the traceability to national standards, which realize the physical units of measurements (SI).
The measurements and the uncertainties with confidence probability are given on the following pages and are part of the certificate.

All calibrations have been conducted in the closed laboratory facility; environment temperature (22 ± 3)°C and humidity < 70%.

Calibration Equipment used (M&E critical for calibration)

| Primary Standards | ID # | Cal Date (Calibrated by, Certificate No.) | Scheduled Calibration |
|----------------------------|------------------|---|-----------------------|
| Power meter EPM-442A | GB37480704 | 04-Oct-05 (METAS, No. 251-00516) | Oct-06 |
| Power sensor HP 8461A | US37292783 | 04-Oct-05 (METAS, No. 251-00516) | Oct-06 |
| Reference 20 dB Attenuator | SN: 5086 (20g) | 11-Aug-05 (METAS, No. 251-00498) | Aug-06 |
| Reference 10 dB Attenuator | SN: 5047.2 (10r) | 11-Aug-05 (METAS, No. 251-00498) | Aug-06 |
| Reference Probe ET3DV6 | SN: 1507 | 28-Oct-05 (SPEAG, No. ET3-1507_Oct05) | Oct-06 |
| DAE4 | SN: 601 | 15-Dec-05 (SPEAG, No. DAE4-601_Dec05) | Dec-06 |

| Secondary Standards | ID # | Check Date (in house) | Scheduled Check |
|-----------------------------|------------------|--|------------------------|
| Power sensor HP 8461A | MY41092317 | 18-Oct-02 (SPEAG, in house check Oct-05) | In house check: Oct-07 |
| RF generator Agilent E4421B | MY41000675 | 11-May-05 (SPEAG, in house check Nov-05) | In house check: Nov-07 |
| Network Analyzer HP 8753E | US37390585 S4206 | 18-Oct-01 (SPEAG, in house check Nov-05) | In house check: Nov-06 |

| | | | |
|----------------|------------------------|------------------------------------|----------------|
| Calibrated by: | Name: Judith Müller | Function: Laboratory Technician | Signature: |
| Approved by: | Name: Katja Pokovic | Function: Technical Manager | Signature: |

Issued: March 22, 2006

This calibration certificate shall not be reproduced except in full without written approval of the laboratory.

Certificate No: D1900V2-5d041_Mar06

Page 1 of 9



Calibration Laboratory of
Schmid & Partner
Engineering AG
Zeughausstrasse 43, 8004 Zurich, Switzerland



S Schweizerischer Kalibrierdienst
C Service suisse d'étalonnage
S Servizio svizzero di taratura
S Swiss Calibration Service

Accredited by the Swiss Federal Office of Metrology and Accreditation
The Swiss Accreditation Service is one of the signatories to the EA
Multilateral Agreement for the recognition of calibration certificates

Accreditation No.: SCS 108

Glossary:

| | |
|-------|---------------------------------|
| TSL | tissue simulating liquid |
| ConvF | sensitivity in TSL / NORM x,y,z |
| N/A | not applicable or not measured |

Calibration is Performed According to the Following Standards:

- IEEE Std 1528-2003, "IEEE Recommended Practice for Determining the Peak Spatial-Averaged Specific Absorption Rate (SAR) in the Human Head from Wireless Communications Devices: Measurement Techniques", December 2003
- CENELEC EN 50361, "Basic standard for the measurement of Specific Absorption Rate related to human exposure to electromagnetic fields from mobile phones (300 MHz - 3 GHz)", July 2001
- Federal Communications Commission Office of Engineering & Technology (FCC OET), "Evaluating Compliance with FCC Guidelines for Human Exposure to Radiofrequency Electromagnetic Fields; Additional Information for Evaluating Compliance of Mobile and Portable Devices with FCC Limits for Human Exposure to Radiofrequency Emissions", Supplement C (Edition 01-01) to Bulletin 65

Additional Documentation:

- DASY4 System Handbook

Methods Applied and Interpretation of Parameters:

- Measurement Conditions:** Further details are available from the Validation Report at the end of the certificate. All figures stated in the certificate are valid at the frequency indicated.
- Antenna Parameters with TSL:** The dipole is mounted with the spacer to position its feed point exactly below the center marking of the flat phantom section, with the arms oriented parallel to the body axis.
- Feed Point Impedance and Return Loss:** These parameters are measured with the dipole positioned under the liquid filled phantom. The impedance stated is transformed from the measurement at the SMA connector to the feed point. The Return Loss ensures low reflected power. No uncertainty required.
- Electrical Delay:** One-way delay between the SMA connector and the antenna feed point. No uncertainty required.
- SAR measured:** SAR measured at the stated antenna input power.
- SAR normalized:** SAR as measured, normalized to an input power of 1 W at the antenna connector.
- SAR for nominal TSL parameters:** The measured TSL parameters are used to calculate the nominal SAR result.

**Measurement Conditions**

DASY system configuration, as far as not given on page 1.

| | | |
|------------------------------|---------------------------|-------------|
| DASY Version | DASY4 | V4.7 |
| Extrapolation | Advanced Extrapolation | |
| Phantom | Modular Flat Phantom V5.0 | |
| Distance Dipole Center - TSL | 10 mm | with Spacer |
| Area Scan resolution | dx, dy = 15 mm | |
| Zoom Scan Resolution | dx, dy, dz = 5 mm | |
| Frequency | 1900 MHz \pm 1 MHz | |

Head TSL parameters

The following parameters and calculations were applied.

| | Temperature | Permittivity | Conductivity |
|----------------------------------|---------------------|----------------|----------------------|
| Nominal Head TSL parameters | 22.0 °C | 40.0 | 1.40 mho/m |
| Measured Head TSL parameters | (22.0 \pm 0.2) °C | 39.4 \pm 6 % | 1.42 mho/m \pm 6 % |
| Head TSL temperature during test | (21.5 \pm 0.2) °C | ---- | ---- |

SAR result with Head TSL

| | | |
|---|--------------------|--|
| SAR averaged over 1 cm³ (1 g) of Head TSL | condition | |
| SAR measured | 250 mW input power | 9.75 mW / g |
| SAR normalized | normalized to 1W | 39.0 mW / g |
| SAR for nominal Head TSL parameters ¹ | normalized to 1W | 38.4 mW / g \pm 17.0 % (k=2) |

| | | |
|---|--------------------|--|
| SAR averaged over 10 cm³ (10 g) of Head TSL | Condition | |
| SAR measured | 250 mW input power | 5.17 mW / g |
| SAR normalized | normalized to 1W | 20.7 mW / g |
| SAR for nominal Head TSL parameters ¹ | normalized to 1W | 20.5 mW / g \pm 16.5 % (k=2) |

¹ Correction to nominal TSL parameters according to d), chapter "SAR Sensitivities"

**Body TSL parameters**

The following parameters and calculations were applied.

| | Temperature | Permittivity | Conductivity |
|----------------------------------|-----------------|--------------|------------------|
| Nominal Body TSL parameters | 22.0 °C | 53.3 | 1.52 mho/m |
| Measured Body TSL parameters | (22.0 ± 0.2) °C | 54.7 ± 6 % | 1.54 mho/m ± 6 % |
| Body TSL temperature during test | (21.6 ± 0.2) °C | ---- | ---- |

SAR result with Body TSL

| | | |
|---|--------------------|-----------------------------------|
| SAR averaged over 1 cm ³ (1 g) of Body TSL | Condition | |
| SAR measured | 250 mW input power | 10.2 mW / g |
| SAR normalized | normalized to 1W | 40.8 mW / g |
| SAR for nominal Body TSL parameters ² | normalized to 1W | 41.1 mW / g ± 17.0 % (k=2) |

| | | |
|---|--------------------|-----------------------------------|
| SAR averaged over 10 cm ³ (10 g) of Body TSL | condition | |
| SAR measured | 250 mW input power | 5.40 mW / g |
| SAR normalized | normalized to 1W | 21.6 mW / g |
| SAR for nominal Body TSL parameters ² | normalized to 1W | 21.8 mW / g ± 16.5 % (k=2) |

² Correction to nominal TSL parameters according to d), chapter "SAR Sensitivities"

**Appendix****Antenna Parameters with Head TSL**

| | |
|--------------------------------------|-----------------------------------|
| Impedance, transformed to feed point | $53.5 \, \Omega + 5.1 \, j\Omega$ |
| Return Loss | - 24.8 dB |

Antenna Parameters with Body TSL

| | |
|--------------------------------------|-----------------------------------|
| Impedance, transformed to feed point | $47.9 \, \Omega + 6.3 \, j\Omega$ |
| Return Loss | - 23.4 dB |

General Antenna Parameters and Design

| | |
|----------------------------------|----------|
| Electrical Delay (one direction) | 1,200 ns |
|----------------------------------|----------|

After long term use with 100W radiated power, only a slight warming of the dipole near the feedpoint can be measured.

The dipole is made of standard semirigid coaxial cable. The center conductor of the feeding line is directly connected to the second arm of the dipole. The antenna is therefore short-circuited for DC-signals.

No excessive force must be applied to the dipole arms, because they might bend or the soldered connections near the feedpoint may be damaged.

Additional EUT Data

| | |
|-----------------|--------------|
| Manufactured by | SPEAG |
| Manufactured on | July 4, 2003 |

DASY4 Validation Report for Head TSL

Date/Time: 14.03.2006 16:18:53

Test Laboratory: SPEAG, Zurich, Switzerland

DUT: Dipole 1900 MHz; Type: D1900V2; Serial: D1900V2 - SN:5d041

Communication System: CW; Frequency: 1900 MHz; Duty Cycle: 1:1

Medium: HSL U10 BB;

Medium parameters used: $f = 1900$ MHz; $\sigma = 1.42$ mho/m; $\epsilon_r = 39.4$; $\rho = 1000$ kg/m³

Phantom section: Flat Section

Measurement Standard: DASY4 (High Precision Assessment)

DASY4 Configuration:

- Probe: ET3DV6 - SN1507 (HF); ConvF(4.74, 4.74, 4.74); Calibrated: 28.10.2005
- Sensor-Surface: 4mm (Mechanical Surface Detection)
- Electronics: DAE4 Sn601; Calibrated: 15.12.2005
- Phantom: Flat Phantom 5.0 (front); Type: QD000P50AA;;
- Measurement SW: DASY4, V4.7 Build 14; Postprocessing SW: SEMCAD, V1.8 Build 165

Pin = 250 mW; d = 10 mm/Area Scan (71x71x1): Measurement grid: dx=15mm, dy=15mm

Maximum value of SAR (interpolated) = 11.7 mW/g

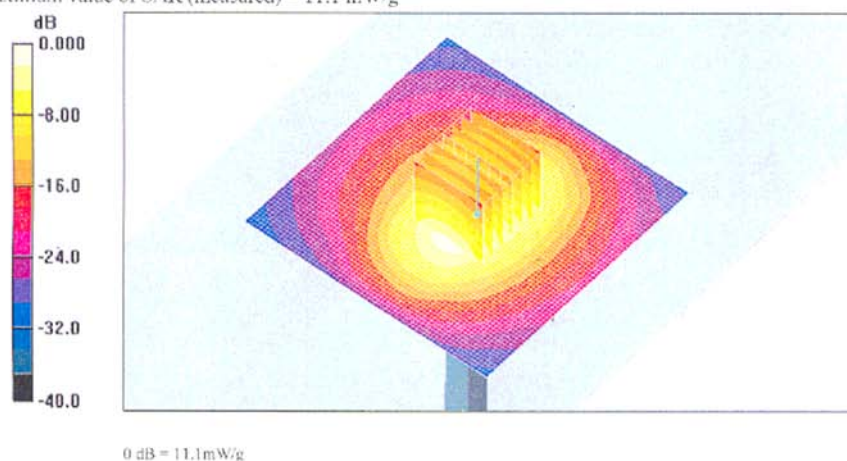
Pin = 250 mW; d = 10 mm/Zoom Scan (7x7x7)/Cube 0: Measurement grid: dx=5mm, dy=5mm, dz=5mm

Reference Value = 90.9 V/m; Power Drift = -0.093 dB

Peak SAR (extrapolated) = 16.6 W/kg

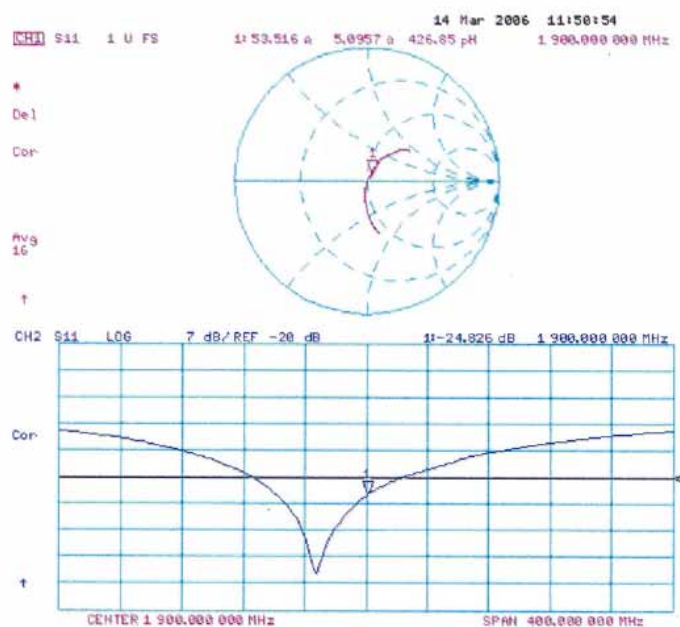
SAR(1 g) = 9.75 mW/g; SAR(10 g) = 5.17 mW/g

Maximum value of SAR (measured) = 11.1 mW/g





Impedance Measurement Plot for Head TSL



DASY4 Validation Report for Body TSL

Date/Time: 21.03.2006 13:59:55

Test Laboratory: SPEAG, Zurich, Switzerland

DUT: Dipole 1900 MHz; Type: D1900V2; Serial: D1900V2 - SN:5d041

Communication System: CW; Frequency: 1900 MHz; Duty Cycle: 1:1

Medium: MSL U10;

Medium parameters used: $f = 1900$ MHz; $\sigma = 1.54$ mho/m; $\epsilon_r = 54.7$; $\rho = 1000$ kg/m³

Phantom section: Flat Section

Measurement Standard: DASY4 (High Precision Assessment)

DASY4 Configuration:

- Probe: ET3DV6 - SN1507 (HF); Conv/4.3, 4.3, 4.3; Calibrated: 28.10.2005
- Sensor-Surface: 4mm (Mechanical Surface Detection)
- Electronics: DAE4 Sn601; Calibrated: 15.12.2005
- Phantom: Flat Phantom 5.0 (front); Type: QD00P50AA;
- Measurement SW: DASY4, V4.6 Build 23; Postprocessing SW: SEMCAD, V1.8 Build 161

Pin = 250 mW; d = 10 mm/Area Scan (71x71x1): Measurement grid: dx=15mm, dy=15mm
Maximum value of SAR (interpolated) = 11.8 mW/g

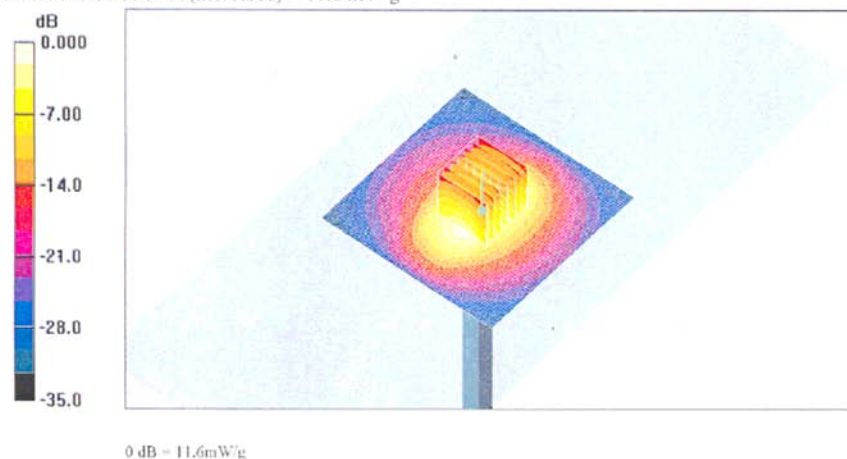
Pin = 250 mW; d = 10 mm/Zoom Scan (7x7x7)/Cube 0: Measurement grid: dx=5mm, dy=5mm, dz=5mm

Reference Value = 89.3 V/m; Power Drift = 0.045 dB

Peak SAR (extrapolated) = 17.4 W/kg

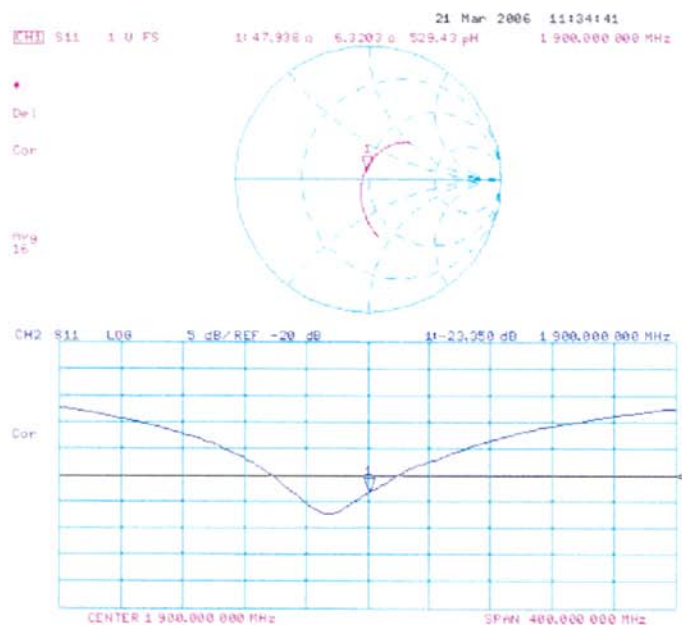
SAR(1 g) = 10.2 mW/g; SAR(10 g) = 5.4 mW/g

Maximum value of SAR (measured) = 11.6 mW/g





Impedance Measurement Plot for Body TSL





Calibration Laboratory of
Schmid & Partner
Engineering AG
Zeughausstrasse 43, 8004 Zurich, Switzerland



S Schweizerischer Kalibrierdienst
C Service suisse d'étalonnage
S Servizio svizzero di taratura
S Swiss Calibration Service

Accredited by the Swiss Federal Office of Metrology and Accreditation
The Swiss Accreditation Service is one of the signatories to the EA
Multilateral Agreement for the recognition of calibration certificates

Accreditation No.: SCS 108

Client **Sporton (Auden)**

Certificate No: ET3-1788_Sep04

CALIBRATION CERTIFICATE

Object **ET3DV6 - SN:1788**

Calibration procedure(s) **QA CAL-01.v5**
Calibration procedure for dosimetric E-field probes

Calibration date: **September 30, 2004**

Condition of the calibrated item **In Tolerance**

This calibration certificate documents the traceability to national standards, which realize the physical units of measurements (SI).
The measurements and the uncertainties with confidence probability are given on the following pages and are part of the certificate.

All calibrations have been conducted in the closed laboratory facility: environment temperature (22 ± 3)°C and humidity < 70%.

Calibration Equipment used (M&T critical for calibration)

| Primary Standards | ID # | Cal Date (Calibrated by, Certificate No.) | Scheduled Calibration |
|----------------------------|-----------------|---|------------------------|
| Power meter E4419B | GB41293874 | 5-May-04 (METAS, No. 251-00388) | May-05 |
| Power sensor E4412A | MY41495277 | 5-May-04 (METAS, No. 251-00388) | May-05 |
| Reference 3 dB Attenuator | SN: S5054 (3c) | 3-Apr-03 (METAS, No. 251-00403) | Aug-05 |
| Reference 20 dB Attenuator | SN: S5086 (20b) | 3-May-04 (METAS, No. 251-00389) | May-05 |
| Reference 30 dB Attenuator | SN: S5129 (30b) | 3-Apr-03 (METAS, No. 251-00404) | Aug-05 |
| Reference Probe ES3DV2 | SN:3013 | 8-Jan-04 (SPEAG, No. ES3-3013_Jan04) | Jan-05 |
| DAE4 | SN: 617 | 26-May-04 (SPEAG, No. DAE4-617_May04) | May-05 |
| Secondary Standards | ID # | Check Date (in house) | Scheduled Check |
| Power sensor HP 8481A | MY41092180 | 18-Sep-02 (SPEAG, in house check Oct-03) | In house check: Oct-05 |
| RF generator HP 8648C | US3642U01700 | 4-Aug-99 (SPEAG, in house check Dec-03) | In house check: Dec-05 |
| Network Analyzer HP 8753E | US37390585 | 18-Oct-01 (SPEAG, in house check Nov-03) | In house check: Nov-04 |

| | Name | Function | Signature |
|----------------|---------------|-----------------------|-----------|
| Calibrated by: | Nico Vetterli | Laboratory Technician | |
| Approved by: | Katja Pokovic | Technical Manager | |

Issued: October 1, 2004

This calibration certificate shall not be reproduced except in full without written approval of the laboratory.



Calibration Laboratory of
Schmid & Partner
Engineering AG
 Zeughausstrasse 43, 8004 Zurich, Switzerland



S Schweizerischer Kalibrierdienst
C Service suisse d'étalonnage
S Servizio svizzero di taratura
S Swiss Calibration Service

Accredited by the Swiss Federal Office of Metrology and Accreditation
 The Swiss Accreditation Service is one of the signatories to the EA
 Multilateral Agreement for the recognition of calibration certificates

Accreditation No.: SCS 108

Glossary:

| | |
|--------------------------|--|
| TSL | tissue simulating liquid |
| NORM _{x,y,z} | sensitivity in free space |
| ConF | sensitivity in TSL / NORM _{x,y,z} |
| DCP | diode compression point |
| Polarization φ | φ rotation around probe axis |
| Polarization ϑ | ϑ rotation around an axis that is in the plane normal to probe axis (at measurement center), i.e., $\vartheta = 0$ is normal to probe axis |

Calibration is Performed According to the Following Standards:

- IEEE Std 1528-2003, "IEEE Recommended Practice for Determining the Peak Spatial-Averaged Specific Absorption Rate (SAR) in the Human Head from Wireless Communications Devices: Measurement Techniques", December 2003
- CENELEC EN 50361, "Basic standard for the measurement of Specific Absorption Rate related to human exposure to electromagnetic fields from mobile phones (300 MHz - 3 GHz), July 2001

Methods Applied and Interpretation of Parameters:

- NORM_{x,y,z}:** Assessed for E-field polarization $\vartheta = 0$ ($f \leq 900$ MHz in TEM-cell; $f > 1800$ MHz: R22 waveguide). NORM_{x,y,z} are only intermediate values, i.e., the uncertainties of NORM_{x,y,z} does not effect the E²-field uncertainty inside TSL (see below *ConvF*).
- NORM(f)_{x,y,z} = NORM_{x,y,z} * frequency_response** (see Frequency Response Chart). This linearization is implemented in DASY4 software versions later than 4.2. The uncertainty of the frequency response is included in the stated uncertainty of *ConvF*.
- DCP_{x,y,z}:** DCP are numerical linearization parameters assessed based on the data of power sweep (no uncertainty required). DCP does not depend on frequency nor media.
- ConvF and Boundary Effect Parameters:** Assessed in flat phantom using E-field (or Temperature Transfer Standard for $f \leq 800$ MHz) and inside waveguide using analytical field distributions based on power measurements for $f > 800$ MHz. The same setups are used for assessment of the parameters applied for boundary compensation (alpha, depth) of which typical uncertainty values are given. These parameters are used in DASY4 software to improve probe accuracy close to the boundary. The sensitivity in TSL corresponds to NORM_{x,y,z} * *ConvF* whereby the uncertainty corresponds to that given for *ConvF*. A frequency dependent *ConvF* is used in DASY 4.3 B17 and higher which allows extending the validity from ± 50 MHz to ± 100 MHz.
- Spherical isotropy (3D deviation from isotropy):** in a field of low gradients realized using a flat phantom exposed by a patch antenna.
- Sensor Offset:** The sensor offset corresponds to the offset of virtual measurement center from the probe tip (on probe axis). No tolerance required.



ET3DV6 SN:1788

September 30, 2004

Probe ET3DV6

SN:1788

| | |
|------------------|--------------------|
| Manufactured: | May 28, 2003 |
| Last calibrated: | August 29, 2003 |
| Recalibrated: | September 30, 2004 |

Calibrated for DASY Systems

(Note: non-compatible with DASY2 system!)



ET3DV6 SN:1788

September 30, 2004

DASY - Parameters of Probe: ET3DV6 SN:1788**Sensitivity in Free Space^A****Diode Compression^B**

| | | | | |
|-------|-------------|-----------------|-------|-------|
| NormX | 1.68 ± 9.9% | $\mu V/(V/m)^2$ | DCP X | 94 mV |
| NormY | 1.70 ± 9.9% | $\mu V/(V/m)^2$ | DCP Y | 94 mV |
| NormZ | 1.74 ± 9.9% | $\mu V/(V/m)^2$ | DCP Z | 94 mV |

Sensitivity in Tissue Simulating Liquid (Conversion Factors)

Please see Page 8.

Boundary Effect**TSL 900 MHz Typical SAR gradient: 5 % per mm**

| | | | |
|---|------------------------------|--------|--------|
| Sensor Center to Phantom Surface Distance | | 3.7 mm | 4.7 mm |
| SAR _{ba} [%] | Without Correction Algorithm | 8.1 | 4.4 |
| SAR _{ba} [%] | With Correction Algorithm | 0.7 | 0.1 |

TSL 1810 MHz Typical SAR gradient: 10 % per mm

| | | | |
|---|------------------------------|--------|--------|
| Sensor Center to Phantom Surface Distance | | 3.7 mm | 4.7 mm |
| SAR _{ba} [%] | Without Correction Algorithm | 12.0 | 8.2 |
| SAR _{ba} [%] | With Correction Algorithm | 0.9 | 0.1 |

Sensor OffsetProbe Tip to Sensor Center **2.7 mm**

The reported uncertainty of measurement is stated as the standard uncertainty of measurement multiplied by the coverage factor k=2, which for a normal distribution corresponds to a coverage probability of approximately 95%.

^A The uncertainties of NormX,Y,Z do not affect the E²-field uncertainty inside TSL (see Page 8).^B Numerical linearization parameter; uncertainty not required.

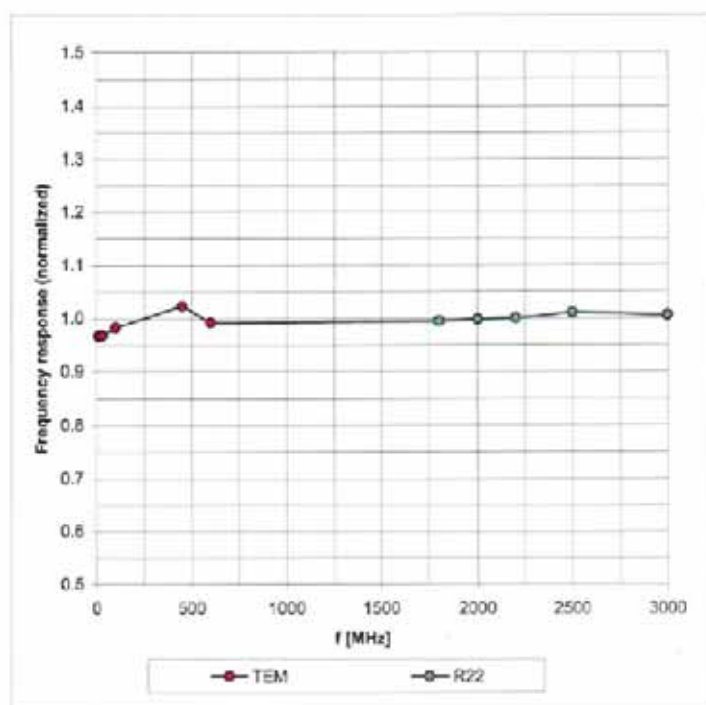


ET3DV6 SN:1788

September 30, 2004

Frequency Response of E-Field

(TEM-Cell:ifi110 EXX, Waveguide: R22)



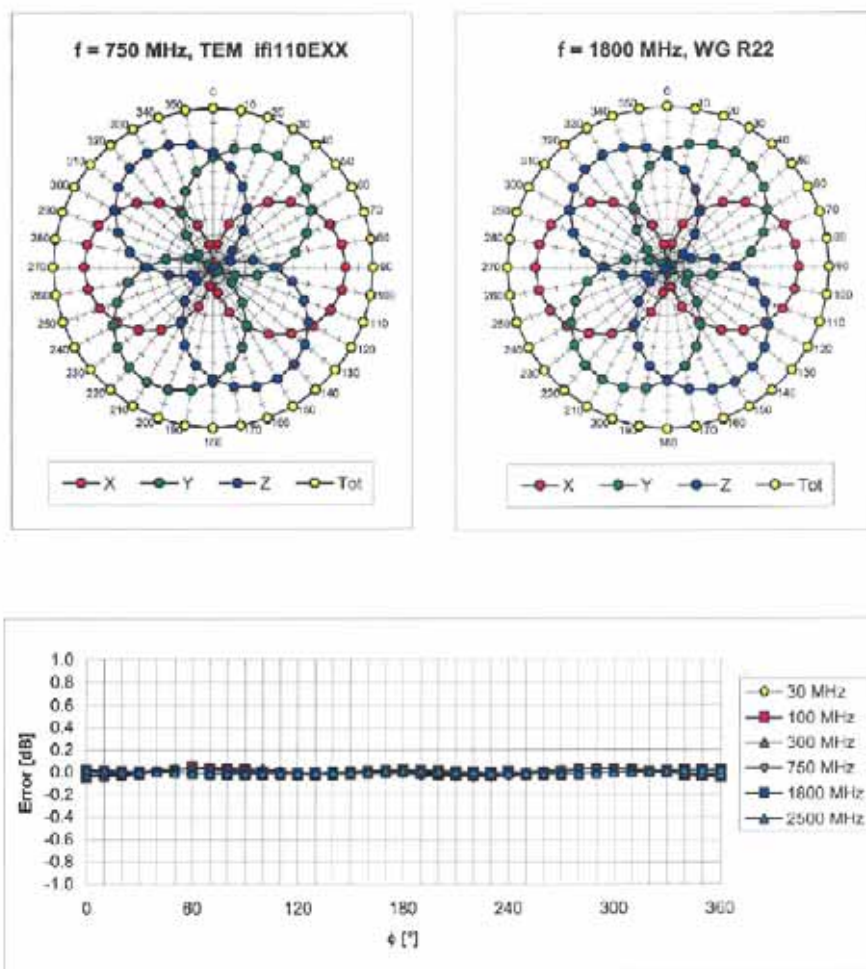
Uncertainty of Frequency Response of E-field: $\pm 6.3\%$ (k=2)



ET3DV6 SN:1788

September 30, 2004

Receiving Pattern (ϕ), $\theta = 0^\circ$



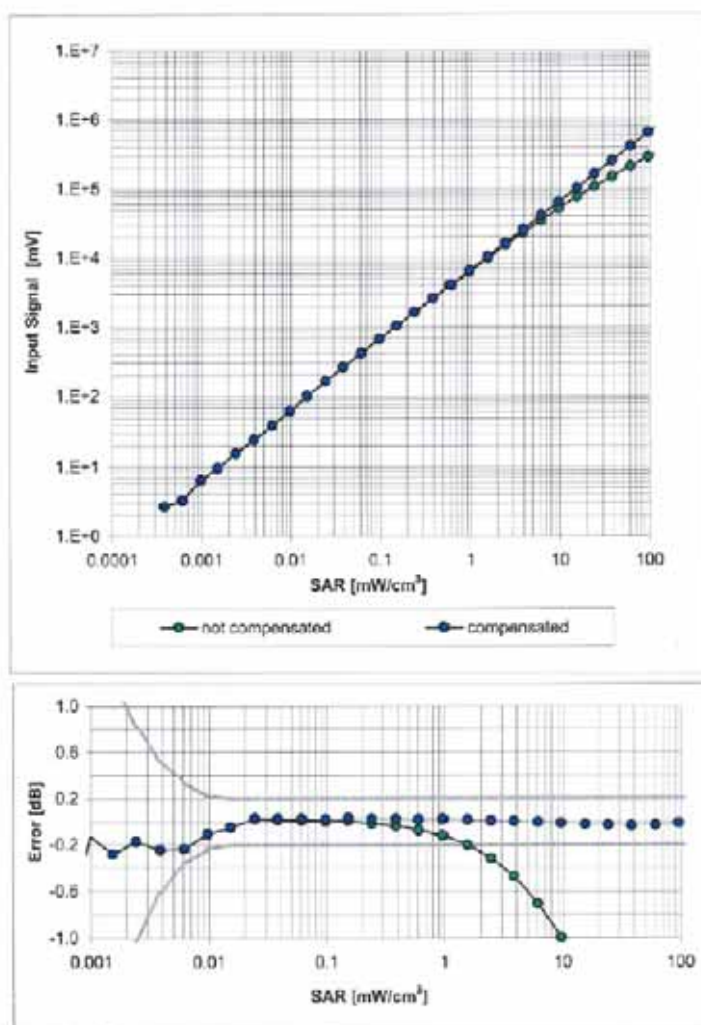
Uncertainty of Axial Isotropy Assessment: $\pm 0.5\%$ ($k=2$)



ET3DV6 SN:1788

September 30, 2004

Dynamic Range $f(\text{SAR}_{\text{head}})$
(Waveguide R22, $f = 1800 \text{ MHz}$)



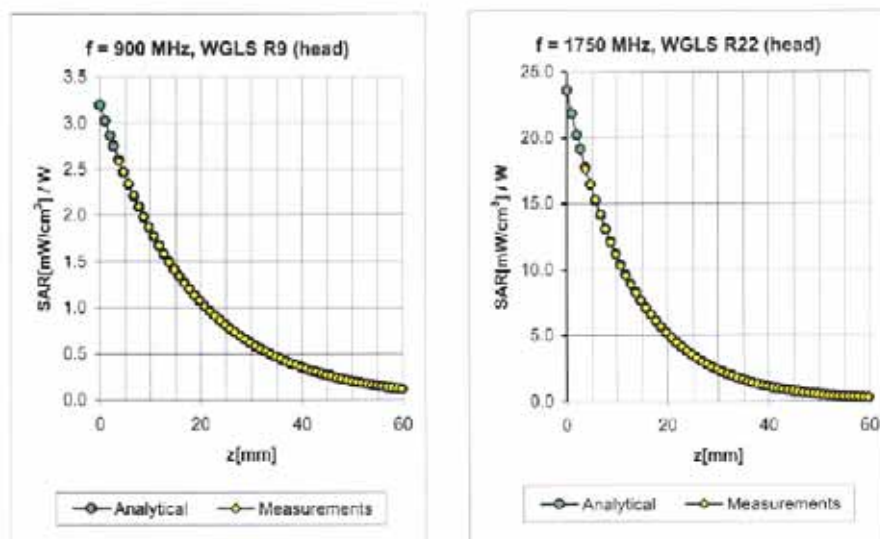
Uncertainty of Linearity Assessment: $\pm 0.6\%$ ($k=2$)



ET3DV6 SN:1788

September 30, 2004

Conversion Factor Assessment



| f [MHz] | Validity [MHz] ^c | TSL | Permittivity | Conductivity | Alpha | Depth | ConvF Uncertainty |
|---------|-----------------------------|------|--------------|--------------|-------|-------|--------------------|
| 835 | ± 50 / ± 100 | Head | 41.5 ± 5% | 0.90 ± 5% | 1.12 | 1.42 | 6.74 ± 11.0% (k=2) |
| 800 | ± 50 / ± 100 | Head | 41.5 ± 5% | 0.97 ± 5% | 1.07 | 1.44 | 6.63 ± 11.0% (k=2) |
| 1750 | ± 50 / ± 100 | Head | 40.0 ± 5% | 1.40 ± 5% | 0.56 | 2.31 | 5.37 ± 11.0% (k=2) |
| 1900 | ± 50 / ± 100 | Head | 40.0 ± 5% | 1.40 ± 5% | 0.55 | 2.42 | 5.16 ± 11.0% (k=2) |
| 2000 | ± 50 / ± 100 | Head | 40.0 ± 5% | 1.40 ± 5% | 0.54 | 2.59 | 4.88 ± 11.0% (k=2) |
| 2450 | ± 50 / ± 100 | Head | 39.2 ± 5% | 1.80 ± 5% | 0.65 | 2.22 | 4.56 ± 11.8% (k=2) |
| | | | | | | | |
| 835 | ± 50 / ± 100 | Body | 55.2 ± 5% | 0.97 ± 5% | 1.04 | 1.52 | 6.53 ± 11.0% (k=2) |
| 900 | ± 50 / ± 100 | Body | 55.0 ± 5% | 1.05 ± 5% | 0.99 | 1.55 | 6.17 ± 11.0% (k=2) |
| 1750 | ± 50 / ± 100 | Body | 53.3 ± 5% | 1.52 ± 5% | 0.53 | 2.74 | 4.73 ± 11.0% (k=2) |
| 1900 | ± 50 / ± 100 | Body | 53.3 ± 5% | 1.52 ± 5% | 0.55 | 2.82 | 4.56 ± 11.0% (k=2) |
| 2000 | ± 50 / ± 100 | Body | 53.3 ± 5% | 1.52 ± 5% | 0.54 | 2.98 | 4.43 ± 11.0% (k=2) |
| 2450 | ± 50 / ± 100 | Body | 52.7 ± 5% | 1.95 ± 5% | 0.72 | 2.00 | 4.26 ± 11.8% (k=2) |

^c The validity of ± 100 MHz only applies for DASY 4.3 B17 and higher (see Page 2). The uncertainty is the RSS of the ConvF uncertainty at calibration frequency and the uncertainty for the indicated frequency band.

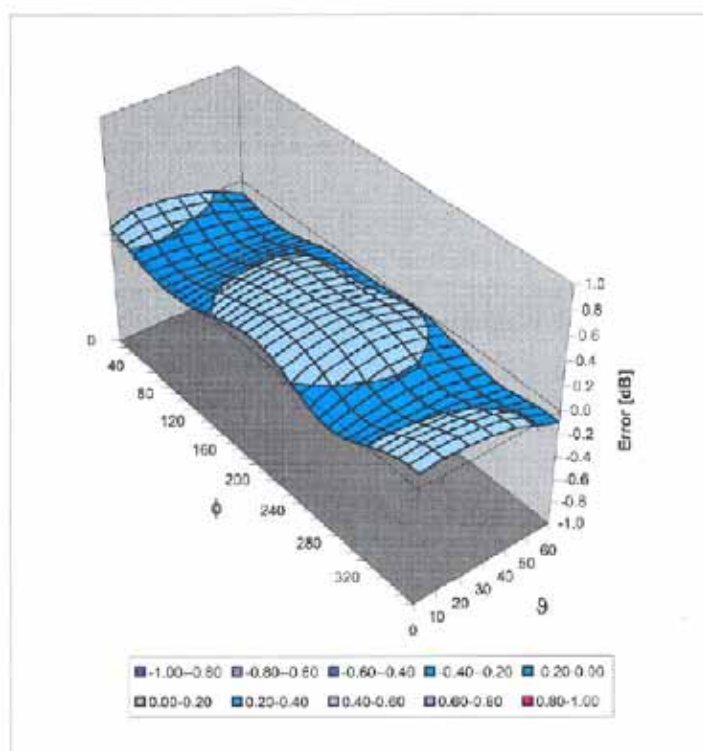


ET3DV6 SN:1788

September 30, 2004

Deviation from Isotropy in HSL

Error (ϕ , θ), $f = 900$ MHz



Uncertainty of Spherical Isotropy Assessment: $\pm 2.6\%$ ($k=2$)



**Calibration Laboratory of
Schmid & Partner
Engineering AG**
Zeughausstrasse 43, 8004 Zurich, Switzerland



S Schweizerischer Kalibrierdienst
C Service suisse d'étalonnage
S Servizio svizzero di taratura
S Swiss Calibration Service

Accredited by the Swiss Federal Office of Metrology and Accreditation
The Swiss Accreditation Service is one of the signatories to the EA
Multilateral Agreement for the recognition of calibration certificates

Accreditation No.: **SCS 108**

Client **Sporton (Auden)**

Certificate No: **DAE3-577_Nov05**

CALIBRATION CERTIFICATE

Object **DAE3 - SD 000 D03 AA - SN: 577**

Calibration procedure(s) **QA CAL-06.v12
Calibration procedure for the data acquisition electronics (DAE)**

Calibration date: **November 11, 2005**

Condition of the calibrated item **In Tolerance**

This calibration certificate documents the traceability to national standards, which realize the physical units of measurements (SI).
The measurements and the uncertainties with confidence probability are given on the following pages and are part of the certificate.

All calibrations have been conducted in the closed laboratory facility; environment temperature (22 ± 3)°C and humidity < 70%.

Calibration Equipment used (M&TE critical for calibration)

| Primary Standards | ID # | Cal Date (Calibrated by: Certificate No.) | Scheduled Calibration |
|-----------------------------------|-------------|---|-----------------------|
| Fluke Process Calibrator Type 702 | SN: 6295803 | 7-Oct-05 (Sintrel, No. E-050073) | Oct-06 |

| Secondary Standards | ID # | Check Date (In house) | Scheduled Check |
|---------------------|--------------------|-----------------------------------|-----------------------|
| Calibrator Box V1.1 | SE UMS 006 AB 1002 | 29-Jun-05 (SPEAG, in house check) | In house check Jun-06 |

| | | | |
|----------------|----------------------------------|-------------------------------|---------------|
| Calibrated by: | Name Daniel Steinacher | Function Technician | Signature |
| | | | |
| Approved by: | Fin Bornholt | R&D Director | |

Issued: November 11, 2005

This calibration certificate shall not be reproduced except in full without written approval of the laboratory.



Calibration Laboratory of
Schmid & Partner
Engineering AG
Zeughausstrasse 43, 8004 Zurich, Switzerland



S Schweizerischer Kalibrierdienst
C Service suisse d'étalonnage
S Servizio svizzero di taratura
S Swiss Calibration Service

Accredited by the Swiss Federal Office of Metrology and Accreditation
The Swiss Accreditation Service is one of the signatories to the EA
Multilateral Agreement for the recognition of calibration certificates

Accreditation No.: SCS 108

Glossary

DAE data acquisition electronics
Connector angle information used in DASY system to align probe sensor X to the robot coordinate system.

Methods Applied and Interpretation of Parameters

- *DC Voltage Measurement*: Calibration Factor assessed for use in DASY system by comparison with a calibrated instrument traceable to national standards. The figure given corresponds to the full scale range of the voltmeter in the respective range.
- *Connector angle*: The angle of the connector is assessed measuring the angle mechanically by a tool inserted. Uncertainty is not required.
- The following parameters contain technical information as a result from the performance test and require no uncertainty.
- *DC Voltage Measurement Linearity*: Verification of the Linearity at +10% and -10% of the nominal calibration voltage. Influence of offset voltage is included in this measurement.
- *Common mode sensitivity*: Influence of a positive or negative common mode voltage on the differential measurement.
- *Channel separation*: Influence of a voltage on the neighbor channels not subject to an input voltage.
- *AD Converter Values with inputs shorted*: Values on the internal AD converter corresponding to zero input voltage
- *Input Offset Measurement*: Output voltage and statistical results over a large number of zero voltage measurements.
- *Input Offset Current*: Typical value for information; Maximum channel input offset current, not considering the input resistance.
- *Input resistance*: DAE input resistance at the connector, during internal auto-zeroing and during measurement.
- *Low Battery Alarm Voltage*: Typical value for information. Below this voltage, a battery alarm signal is generated.
- *Power consumption*: Typical value for information. Supply currents in various operating modes.

**DC Voltage Measurement**

A/D - Converter Resolution nominal

High Range: 1LSB = 6.1 μ V , full range = -100...+300 mV

Low Range: 1LSB = 61nV , full range = -1.....+3mV

DASY measurement parameters: Auto Zero Time: 3 sec; Measuring time: 3 sec

| Calibration Factors | X | Y | Z |
|---------------------|--------------------------|--------------------------|--------------------------|
| High Range | 404 445 \pm 0.1% (k=2) | 403.896 \pm 0.1% (k=2) | 404.369 \pm 0.1% (k=2) |
| Low Range | 3.94241 \pm 0.7% (k=2) | 3.89919 \pm 0.7% (k=2) | 3.95427 \pm 0.7% (k=2) |

Connector Angle

| | |
|---|-----------------|
| Connector Angle to be used in DASY system | 130 ° \pm 1 ° |
|---|-----------------|



Appendix

1. DC Voltage Linearity

| High Range | Input (μV) | Reading (μV) | Error (%) |
|-------------------|-------------------------|---------------------------|-----------|
| Channel X + Input | 200000 | 199999.3 | 0.00 |
| Channel X + Input | 20000 | 20006.75 | 0.03 |
| Channel X - Input | 20000 | -19997.90 | -0.01 |
| Channel Y + Input | 200000 | 200000.3 | 0.00 |
| Channel Y + Input | 20000 | 20004.58 | 0.02 |
| Channel Y - Input | 20000 | -20000.75 | 0.00 |
| Channel Z + Input | 200000 | 199999.6 | 0.00 |
| Channel Z + Input | 20000 | 20001.43 | 0.01 |
| Channel Z - Input | 20000 | -20003.93 | 0.02 |

| Low Range | Input (μV) | Reading (μV) | Error (%) |
|-------------------|-------------------------|---------------------------|-----------|
| Channel X + Input | 2000 | 2000.1 | 0.00 |
| Channel X + Input | 200 | 200.42 | 0.21 |
| Channel X - Input | 200 | -200.30 | 0.15 |
| Channel Y + Input | 2000 | 2000.1 | 0.00 |
| Channel Y + Input | 200 | 199.35 | -0.32 |
| Channel Y - Input | 200 | -200.96 | 0.48 |
| Channel Z + Input | 2000 | 1999.9 | 0.00 |
| Channel Z + Input | 200 | 199.37 | -0.31 |
| Channel Z - Input | 200 | -200.62 | 0.31 |

2. Common mode sensitivity

DASY measurement parameters: Auto Zero Time: 3 sec; Measuring time: 3 sec

| | Common mode Input Voltage (mV) | High Range Average Reading (μV) | Low Range Average Reading (μV) |
|-----------|--------------------------------|--|---|
| Channel X | 200 | 13.40 | 12.55 |
| | - 200 | -12.29 | -13.06 |
| Channel Y | 200 | -6.93 | -7.43 |
| | - 200 | 6.72 | 6.47 |
| Channel Z | 200 | 0.71 | 0.36 |
| | - 200 | -1.67 | -1.93 |

3. Channel separation

DASY measurement parameters: Auto Zero Time: 3 sec; Measuring time: 3 sec

| | Input Voltage (mV) | Channel X (μV) | Channel Y (μV) | Channel Z (μV) |
|-----------|--------------------|-----------------------------|-----------------------------|-----------------------------|
| Channel X | 200 | - | 1.59 | 0.08 |
| Channel Y | 200 | 1.69 | - | 3.62 |
| Channel Z | 200 | -0.73 | -1.49 | - |

**4. AD-Converter Values with inputs shorted**

DASY measurement parameters: Auto Zero Time: 3 sec; Measuring time: 3 sec

| | High Range (LSB) | Low Range (LSB) |
|-----------|------------------|-----------------|
| Channel X | 15946 | 15679 |
| Channel Y | 15960 | 16151 |
| Channel Z | 16233 | 15968 |

5. Input Offset Measurement

DASY measurement parameters: Auto Zero Time: 3 sec; Measuring time: 3 sec

Input 10M Ω

| | Average (μ V) | min. Offset (μ V) | max. Offset (μ V) | Std. Deviation (μ V) |
|-----------|--------------------|------------------------|------------------------|---------------------------|
| Channel X | 0.08 | -1.13 | 2.31 | 0.51 |
| Channel Y | -0.35 | -2.00 | 0.81 | 0.43 |
| Channel Z | -0.38 | -2.76 | 1.68 | 0.40 |

6. Input Offset Current

Nominal input circuitry offset current on all channels: <25fA

7. Input Resistance

| | Zeroing (MOhm) | Measuring (MOhm) |
|-----------|----------------|------------------|
| Channel X | 0.2000 | 200.8 |
| Channel Y | 0.2000 | 201.4 |
| Channel Z | 0.2001 | 200.3 |

8. Low Battery Alarm Voltage (verified during pre test)

| Typical values | Alarm Level (VDC) |
|----------------|-------------------|
| Supply (+ Vcc) | +7.9 |
| Supply (- Vcc) | -7.6 |

9. Power Consumption (verified during pre test)

| Typical values | Switched off (mA) | Stand by (mA) | Transmitting (mA) |
|----------------|-------------------|---------------|-------------------|
| Supply (+ Vcc) | +0.0 | +6 | +14 |
| Supply (- Vcc) | -0.01 | -8 | -9 |