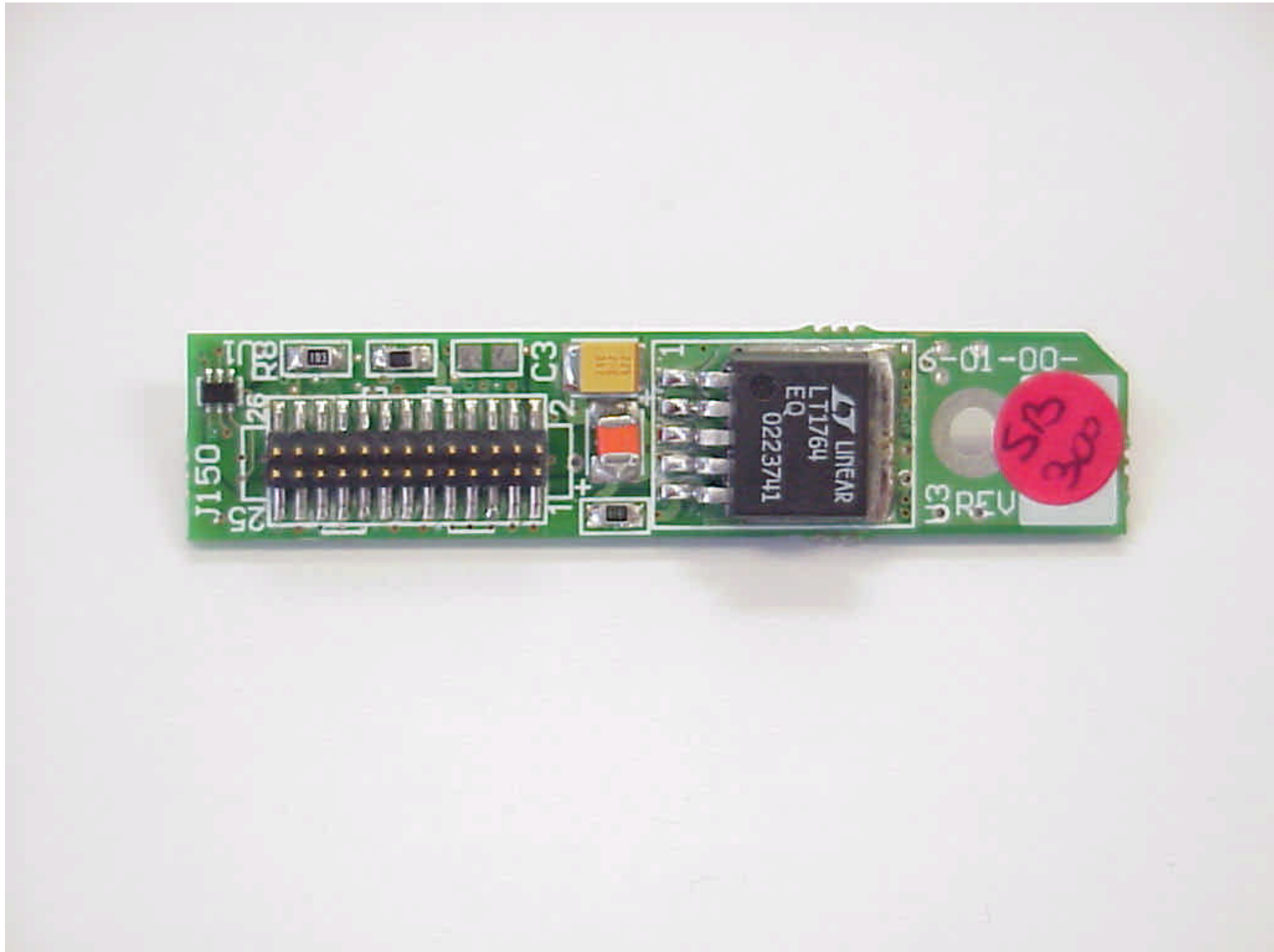



**FCC ID: ESD-SA824894S3**

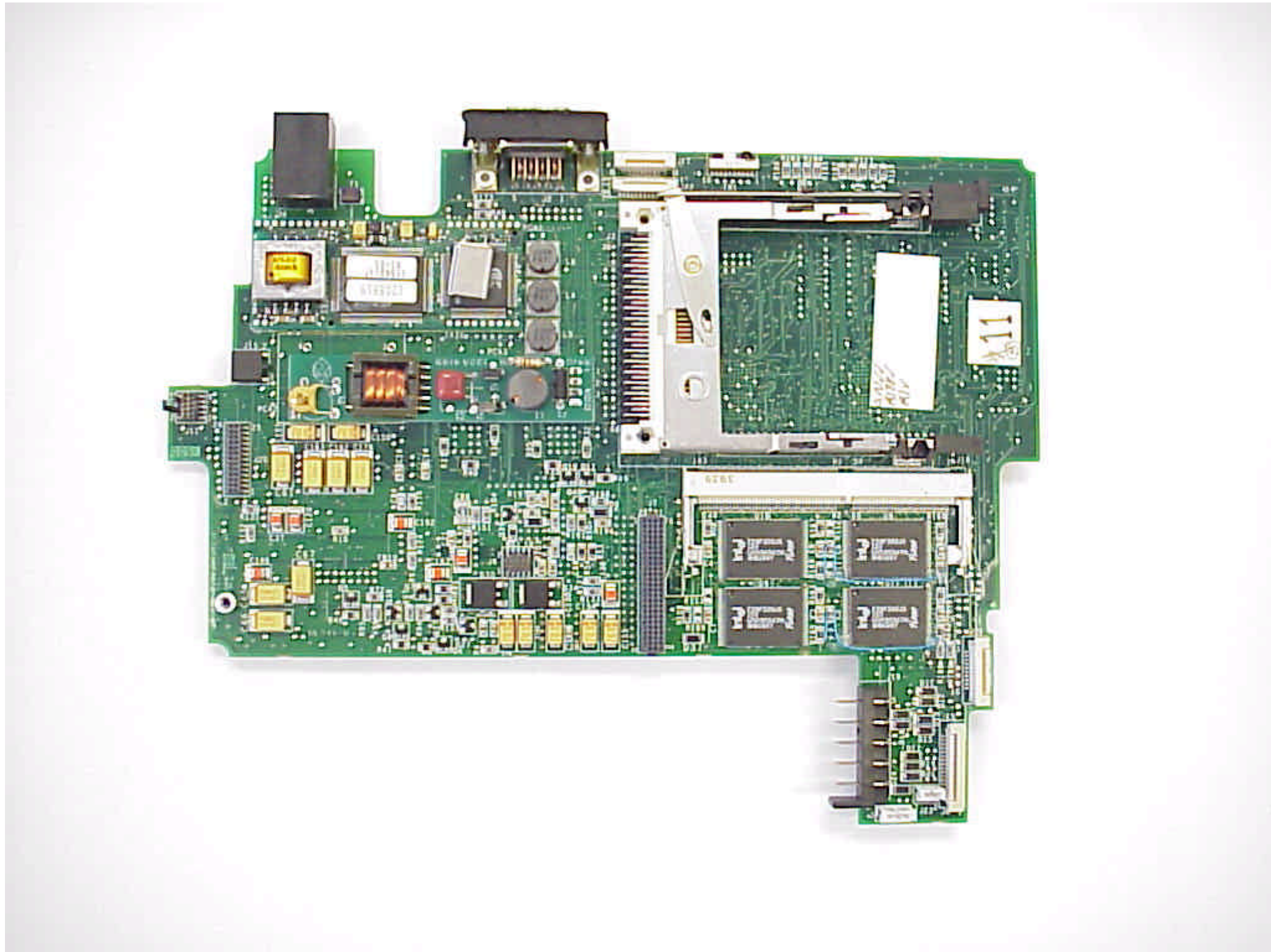
Exhibit 5

**Photographs of the Equipment  
Internal Photos, Part II**



REVISION			
LTR	DESCRIPTION	DATE	ECO

<p><b>PROPRIETARY NOTICE</b>          INFORMATION DISCLOSED HEREIN IS THE PROPERTY OF MELARD TECHNOLOGIES, INC. IT IS FURNISHED FOR EVALUATION PURPOSES ONLY AND SHALL NOT BE DISCLOSED, COPIED OR USED FOR ANY OTHER PURPOSES, EXCEPT AS SPECIFIED BY WRITTEN CONTRACT BETWEEN THE RECIPIENT AND MELARD TECHNOLOGIES, INC. DUPLICATION OF ANY PORTION OF THIS DATA MUST INCLUDE THIS LEGEND</p>	<p>UNLESS OTHERWISE SPECIFIED          DIMENSIONS ARE IN INCHES.          TOLERANCES ARE:          FRACTIONS DECIMALS ANGLES  <math>\pm 1/64</math> .XX = <math>\pm .010</math> <math>\pm 1/2^\circ</math>          .XXX = <math>\pm .005</math></p>	<table border="1"> <tr> <th>APPROVALS</th> <th>DATE</th> </tr> <tr> <td>DRW <b>PAM</b></td> <td>06/26/00</td> </tr> <tr> <td>ENG</td> <td> </td> </tr> <tr> <td>ECC</td> <td> </td> </tr> </table>	APPROVALS	DATE	DRW <b>PAM</b>	06/26/00	ENG		ECC		 <p>MELARD TECHNOLOGIES, INC.          28 KAYSAL COURT          ARMONK, N.Y. 10504</p>
	APPROVALS	DATE									
	DRW <b>PAM</b>	06/26/00									
	ENG										
ECC											
<p><b>MATERIAL:</b></p>	<p><input type="checkbox"/> SIGNATURES ON FILE IF BOX CHECKED</p>	<p>SideArm Sierra Wireless          SB300, personality -          Secondary Side</p>									
<p><b>FINISH:</b></p>	<p>SCALE: NONE</p>	<p>SHEET 1 OF 1</p>									



REVISION			
LTR	DESCRIPTION	DATE	ECO

**PROPRIETARY NOTICE**  
 INFORMATION DISCLOSED HEREIN IS THE PROPERTY OF MELARD TECHNOLOGIES, INC. IT IS FURNISHED FOR EVALUATION PURPOSES ONLY AND SHALL NOT BE DISCLOSED, COPIED OR USED FOR ANY OTHER PURPOSES, EXCEPT AS SPECIFIED BY WRITTEN CONTRACT BETWEEN THE RECIPIENT AND MELARD TECHNOLOGIES, INC. DUPLICATION OF ANY PORTION OF THIS DATA MUST INCLUDE THIS LEGEND

UNLESS OTHERWISE SPECIFIED

DIMENSIONS ARE IN INCHES.  
 TOLERANCES ARE:

FRACTIONS DECIMALS ANGLES  
 $\pm 1/64$  .XX =  $\pm .010$   $\pm 1/2^\circ$   
 .XXX =  $\pm .005$

MATERIAL:

FINISH:


APPROVALS DATE

DRW **PAM** 06/26/00

ENG

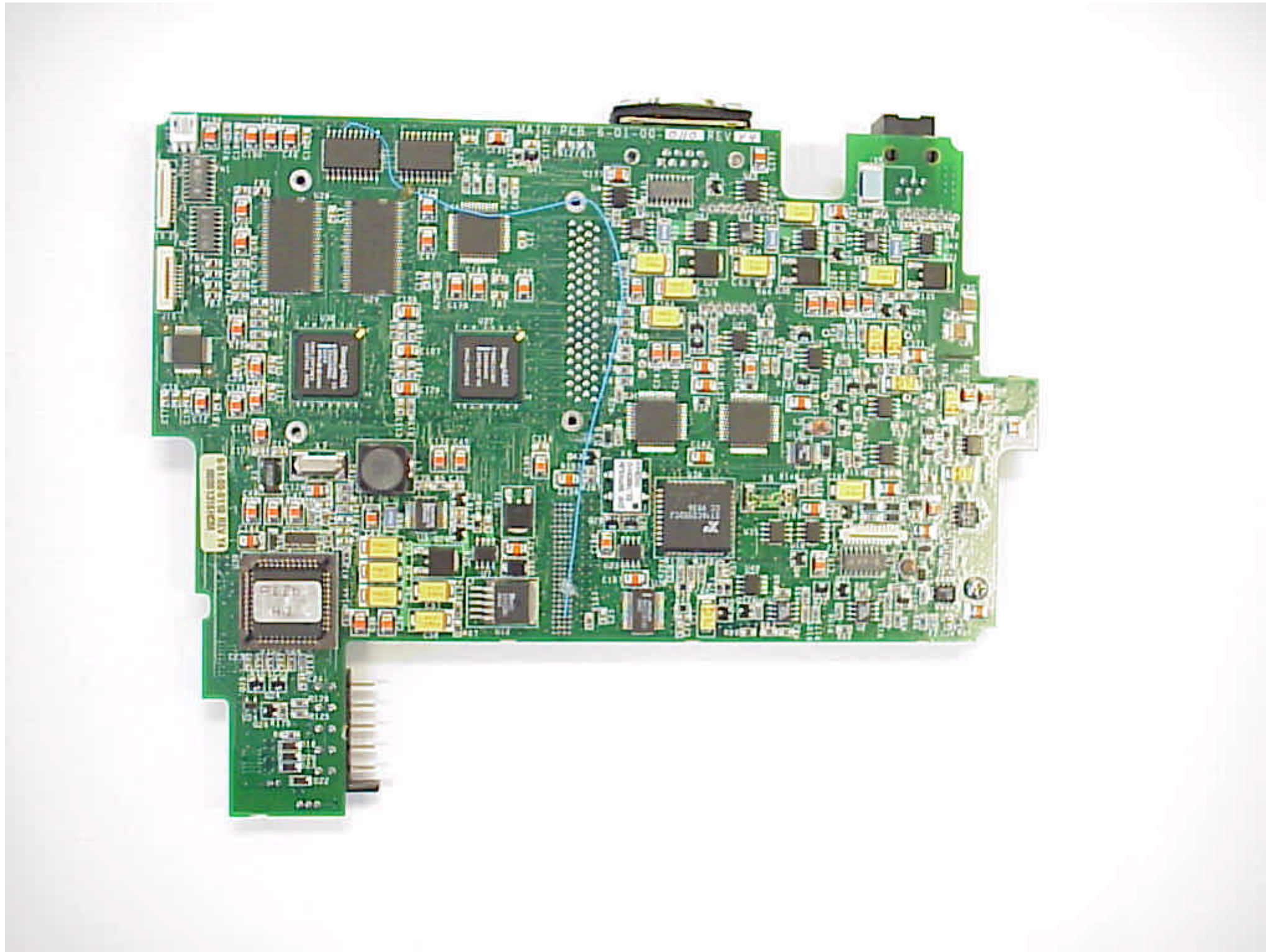
ECC

SIGNATURES ON FILE IF BOX CHECKED


 MELARD TECHNOLOGIES, INC.  
 28 KAYSAL COURT  
 ARMONK, N.Y. 10504

SideArm Main Board -  
 Primary Side





REVISION			
LTR	DESCRIPTION	DATE	ECO

<p><b>PROPRIETARY NOTICE</b>          INFORMATION DISCLOSED HEREIN IS THE PROPERTY OF MELARD TECHNOLOGIES, INC. IT IS FURNISHED FOR EVALUATION PURPOSES ONLY AND SHALL NOT BE DISCLOSED, COPIED OR USED FOR ANY OTHER PURPOSES, EXCEPT AS SPECIFIED BY WRITTEN CONTRACT BETWEEN THE RECIPIENT AND MELARD TECHNOLOGIES, INC. DUPLICATION OF ANY PORTION OF THIS DATA MUST INCLUDE THIS LEGEND</p>	<p>UNLESS OTHERWISE SPECIFIED          DIMENSIONS ARE IN INCHES.          TOLERANCES ARE:          FRACTIONS DECIMALS ANGLES  <math>\pm 1/64</math> .XX = <math>\pm .010</math> <math>\pm 1/2^\circ</math>          .XXX = <math>\pm .005</math></p>	<table border="1"> <tr> <th>APPROVALS</th> <th>DATE</th> </tr> <tr> <td>DRW <b>PAM</b></td> <td>06/26/00</td> </tr> <tr> <td>ENG</td> <td> </td> </tr> <tr> <td>ECC</td> <td> </td> </tr> </table>	APPROVALS	DATE	DRW <b>PAM</b>	06/26/00	ENG		ECC		 <p>MELARD TECHNOLOGIES, INC.          28 KAYSAL COURT          ARMONK, N.Y. 10504</p>
	APPROVALS	DATE									
	DRW <b>PAM</b>	06/26/00									
	ENG										
ECC											
<p><b>MATERIAL:</b></p>	<p><input type="checkbox"/> SIGNATURES ON FILE IF BOX CHECKED</p>	<p>SideArm Main Board -          Secondary Side</p>									
<p><b>FINISH:</b></p>	<p>SCALE: NONE</p>	<p>SHEET 1 OF 1</p>									