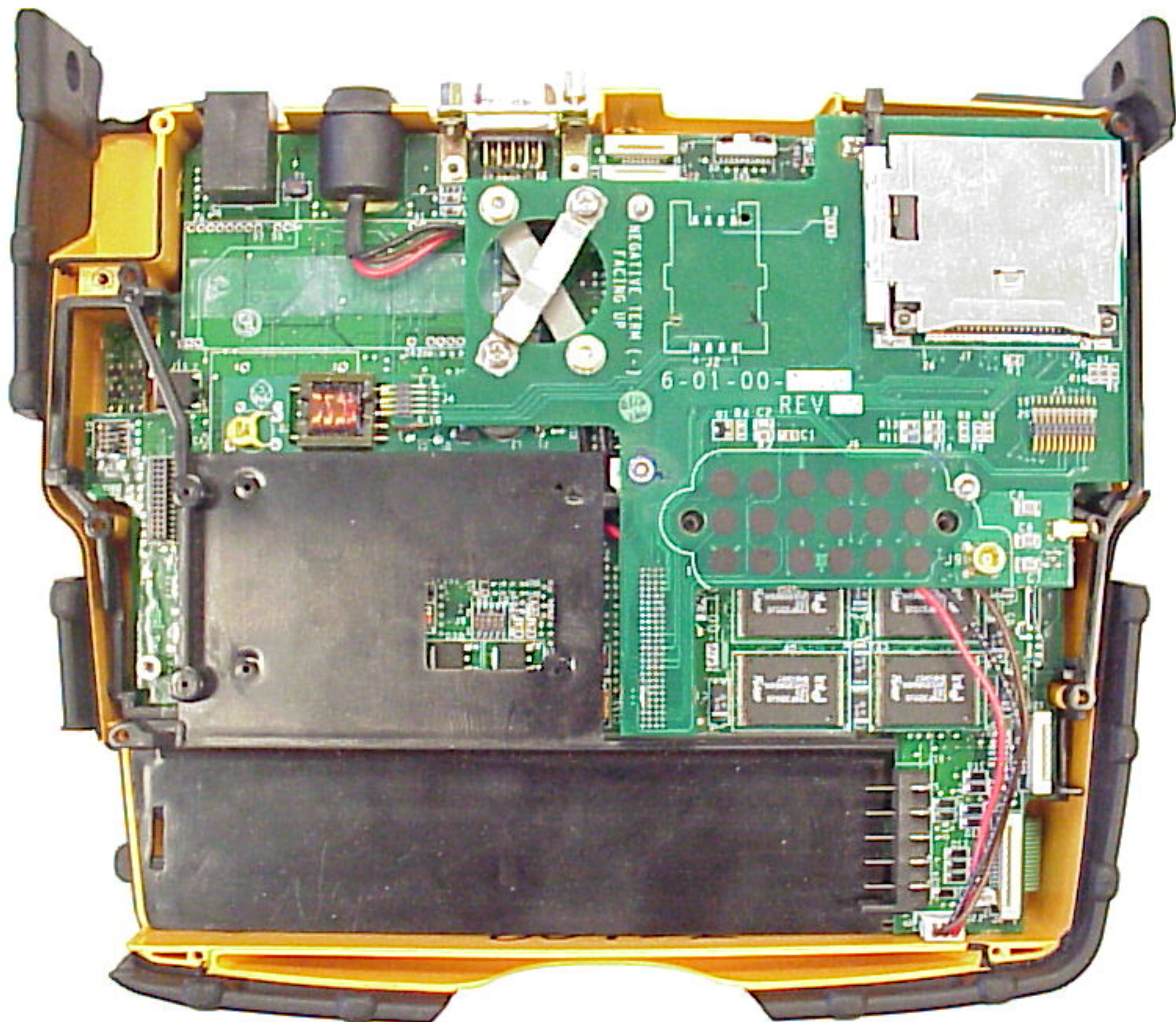


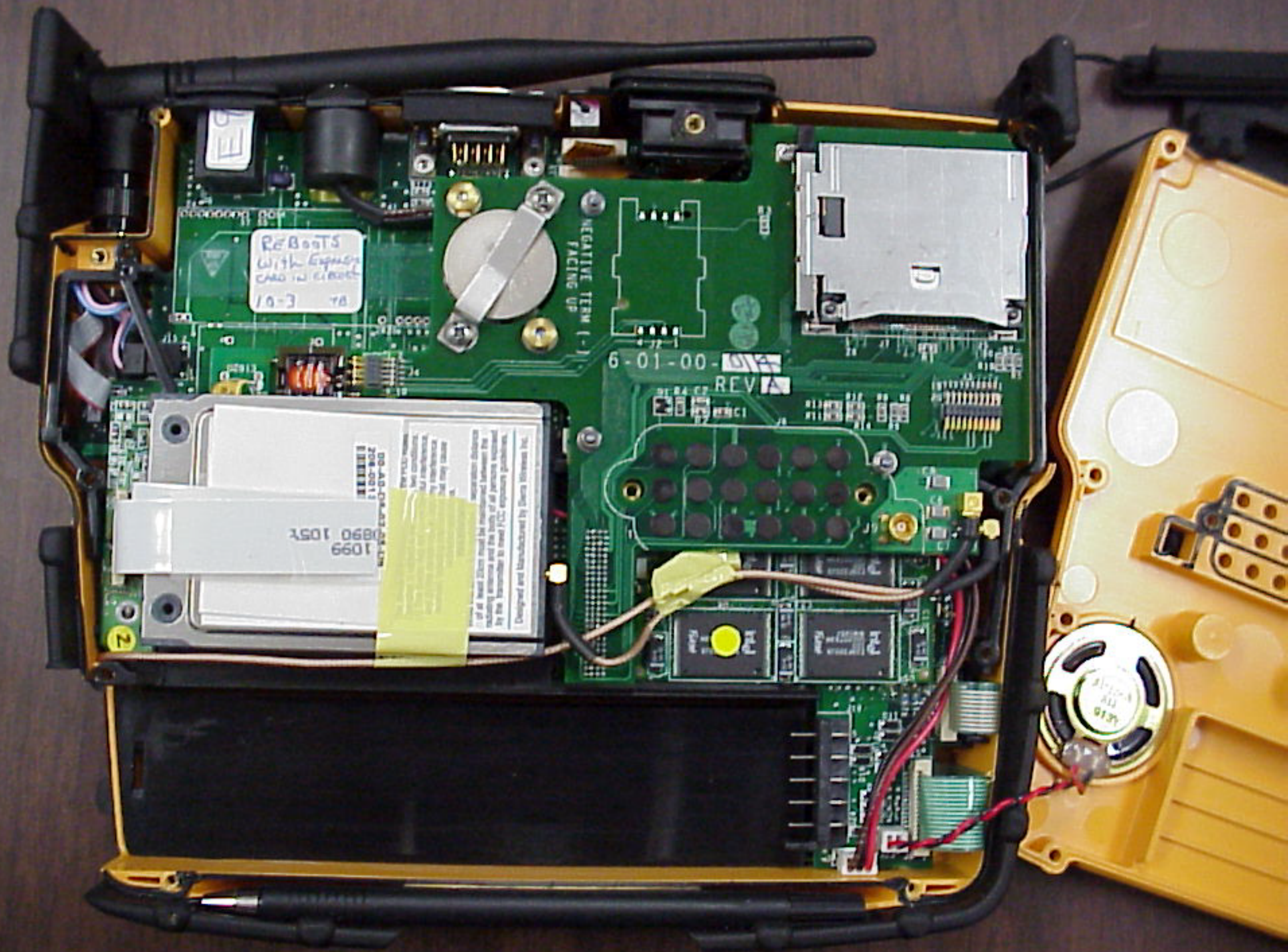
**FCC ID: ESD-SA824894S3**

**Exhibit 5**

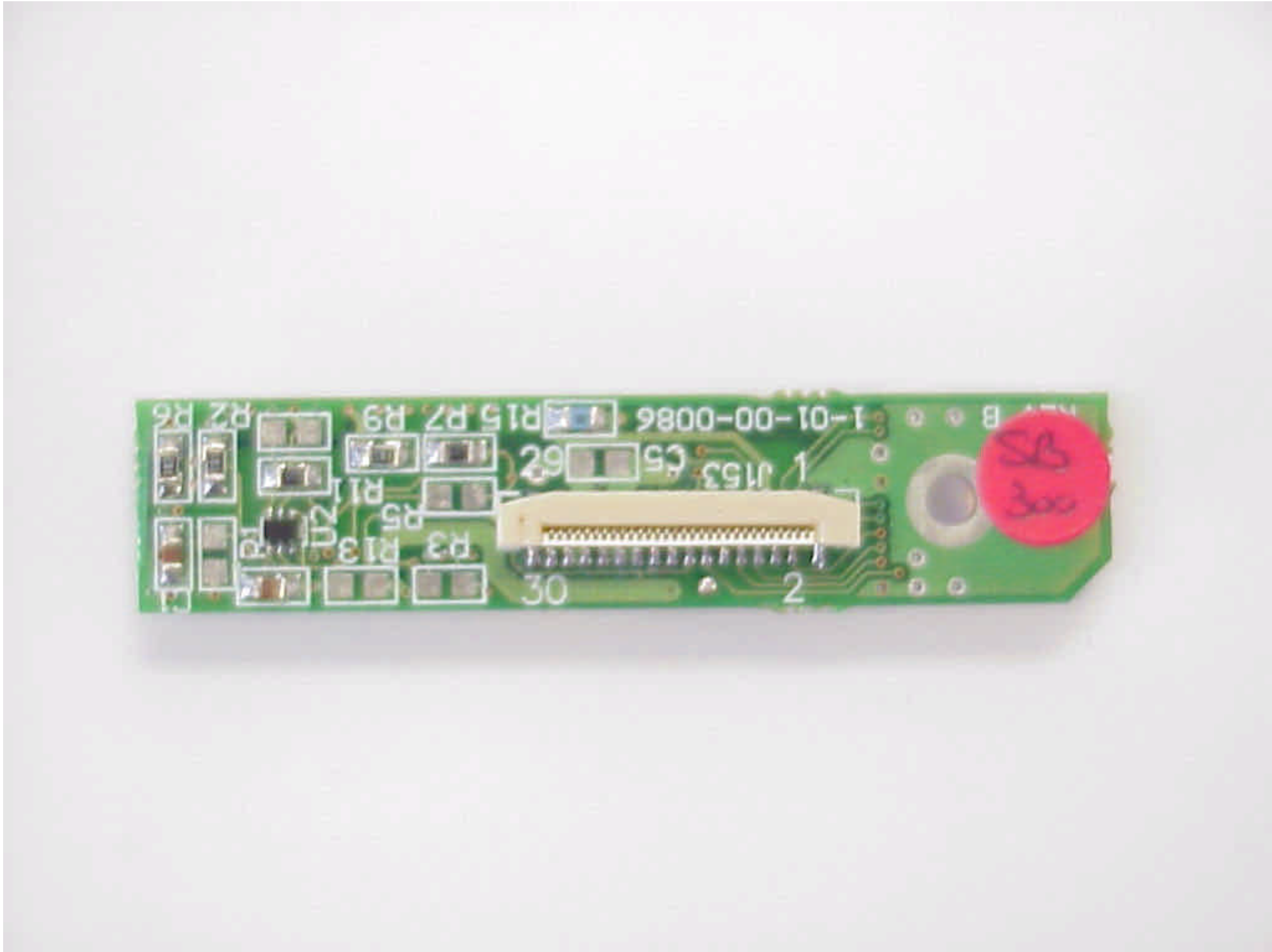
**Photographs of the Equipment  
Internal Photos, Part I**











REVISION			
LTR	DESCRIPTION	DATE	ECO

**PROPRIETARY NOTICE**  
INFORMATION DISCLOSED HEREIN IS THE PROPERTY OF MELARD TECHNOLOGIES, INC. IT IS FURNISHED FOR EVALUATION PURPOSES ONLY AND SHALL NOT BE DISCLOSED, COPIED OR USED FOR ANY OTHER PURPOSES, EXCEPT AS SPECIFIED BY WRITTEN CONTRACT BETWEEN THE RECIPIENT AND MELARD TECHNOLOGIES, INC. DUPLICATION OF ANY PORTION OF THIS DATA MUST INCLUDE THIS LEGEND

UNLESS OTHERWISE SPECIFIED

DIMENSIONS ARE IN INCHES.  
TOLERANCES ARE:

FRACTIONS DECIMALS ANGLES  
+/- 1/64 .XX= +/- .010 +/- 1/2 °  
.XXX = +/- .005

MATERIAL:

FINISH:

APPROVALS

DATE

DRW

PAM

06/26/00

ENG

ECC



SIGNATURES  
ON FILE IF  
BOX CHECKED



MELARD TECHNOLOGIES, INC.  
28 KAYSAL COURT  
ARMONK, N.Y. 10504

SideArm Sierra Wireless  
SB300, personality -  
Primary Side

SCALE: NONE

SHEET 1 OF 1