

BLE Telemetry Internal Hardware

As depicted in figure 1, the module consists of two main components; a Beaglebone Black development kit (in blue circle) and a USB to BLE adapter dongle (in red circle). The Beaglebone Black development kit contains the Cardiac Rhythm Management (CRM) firmware while the BLE adapter dongle enables communication to implantable devices with BLE capabilities.

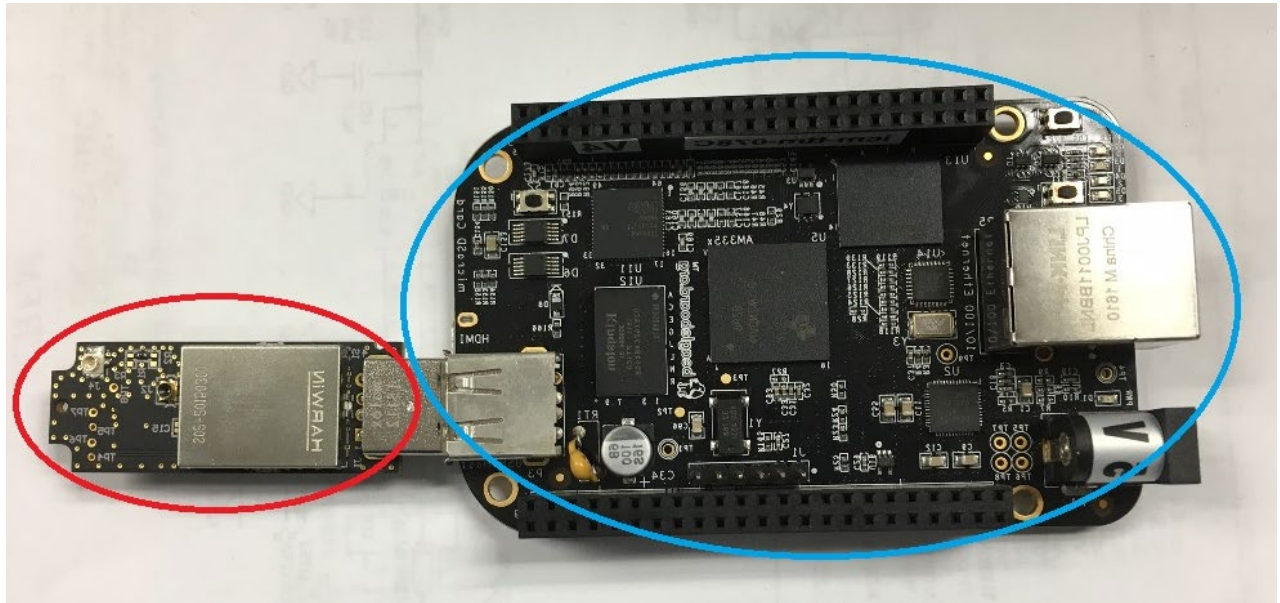


Figure 1: BLE Telemetry Test Module

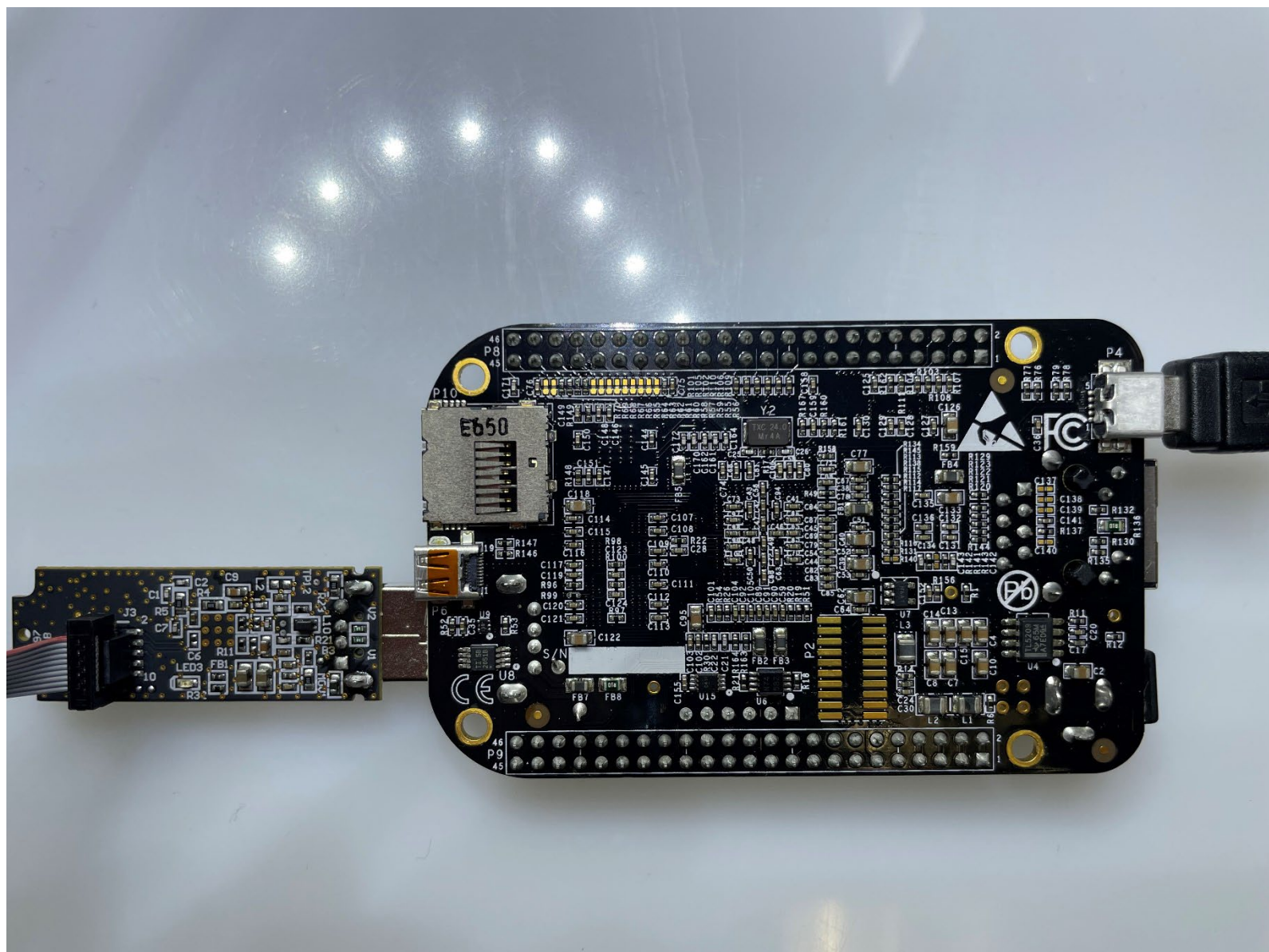


Figure 2: BLE Telemetry Test Module – Bottom Side

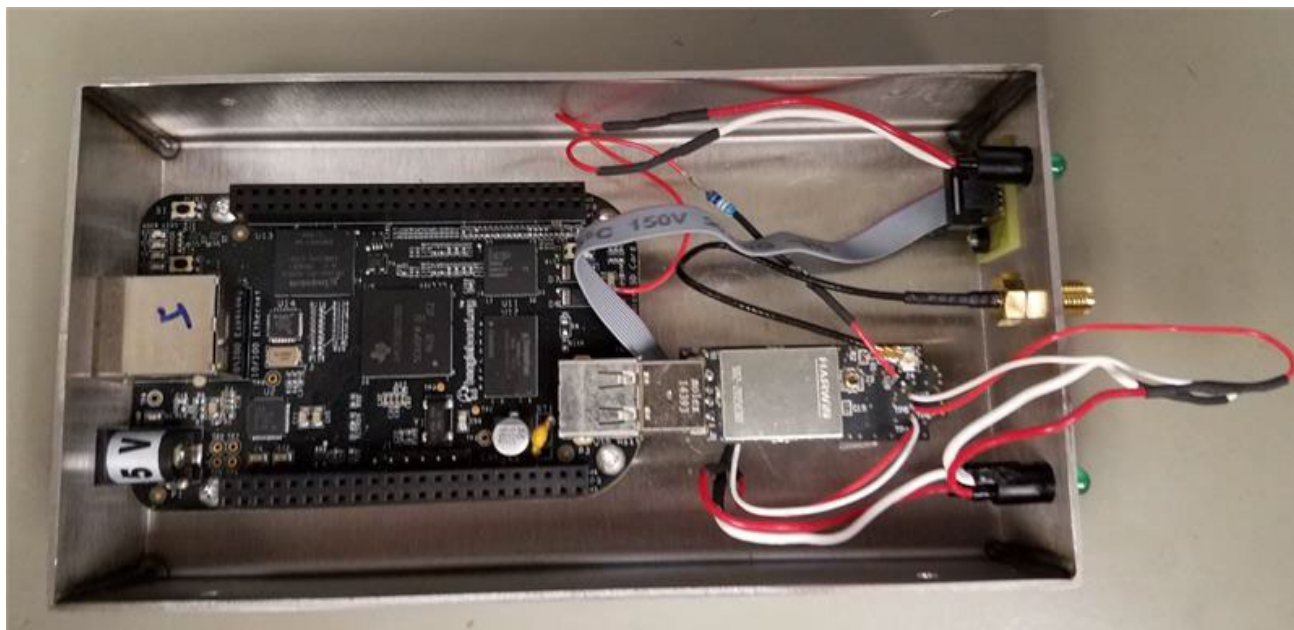


Figure 3: BLE Telemetry Test Module in Production Enclosure

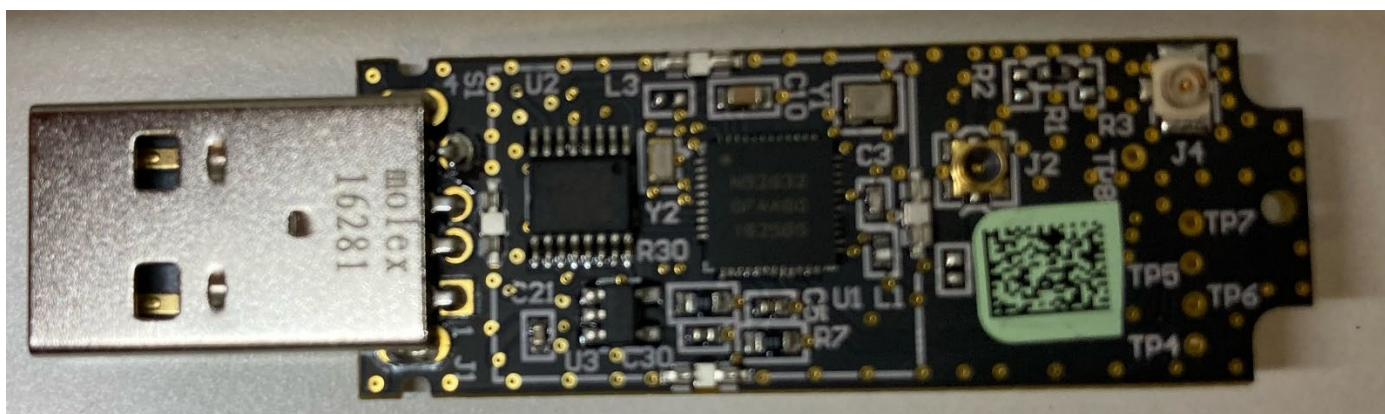


Figure 4: BLE Telemetry Test Module – Shield Removed

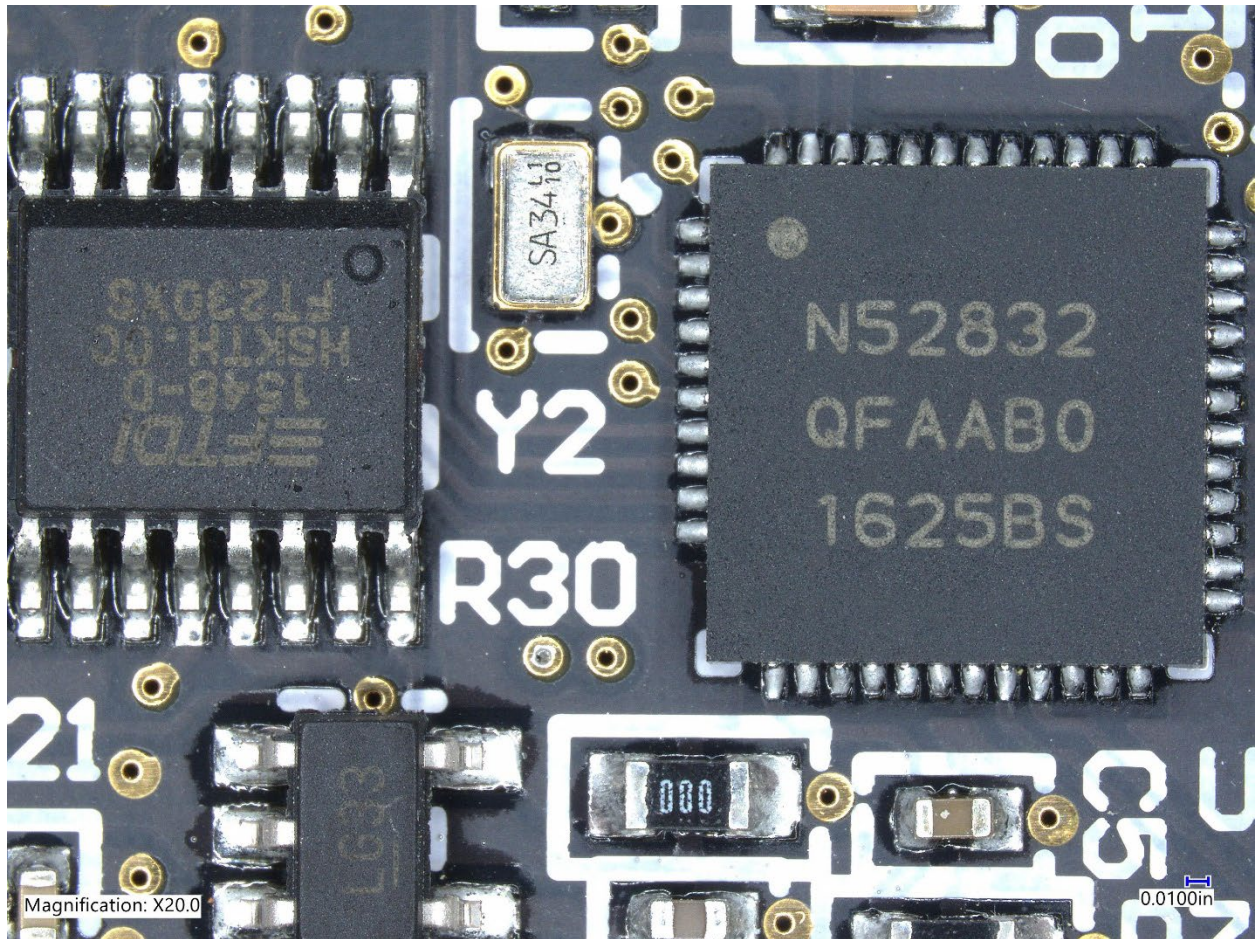


Figure 5: BLE Telemetry Test Module – Shield Removed Closeup