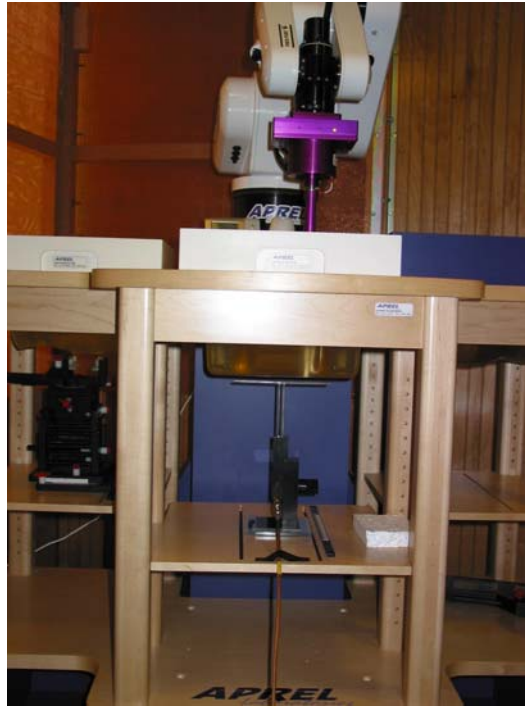
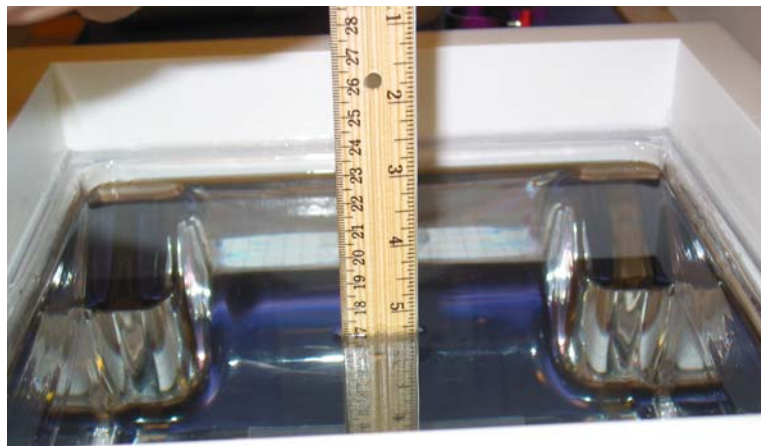


Appendix C – SAR Test Setup Photos



System Body Configuration



Body Tissue Depth



Test Position – Right Head Touch



Test Position – Right Head Tilt



Test Position – Left Head Touch



Test Position – Left Head Tilt



Test Position – Body Front



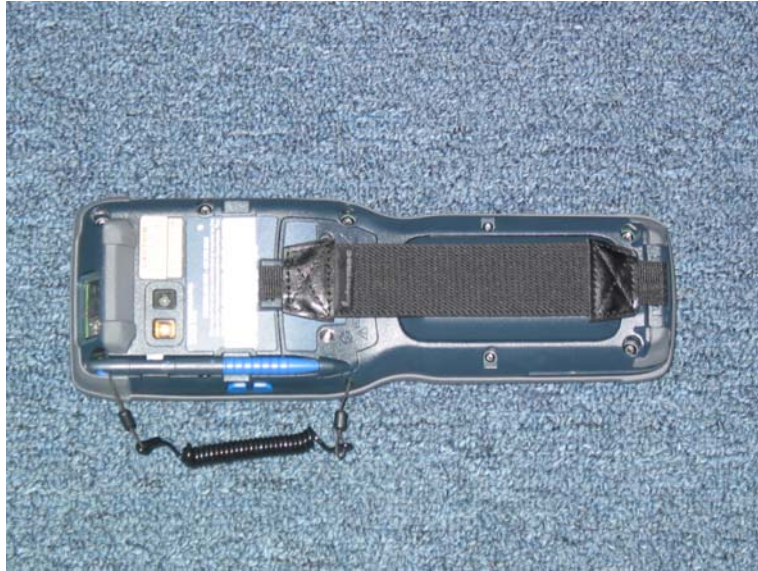
Test Position – Body Right



Test Position – Body Left



Front of Device



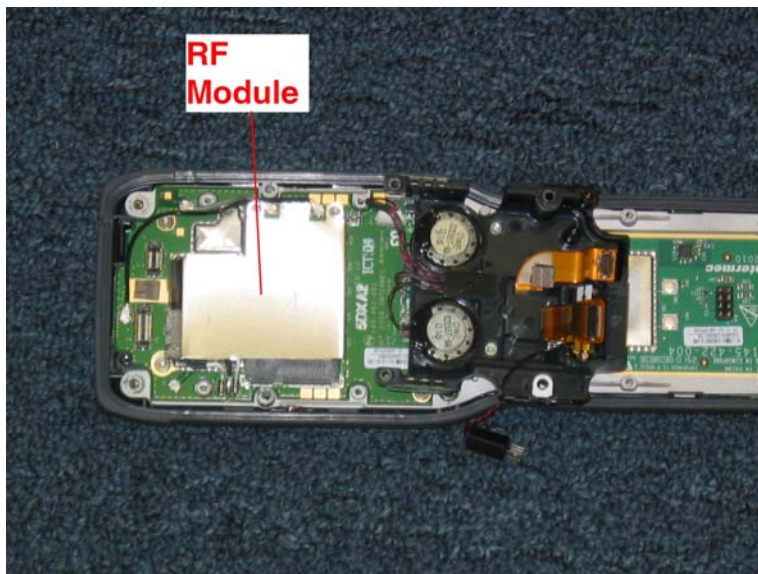
Back of Device



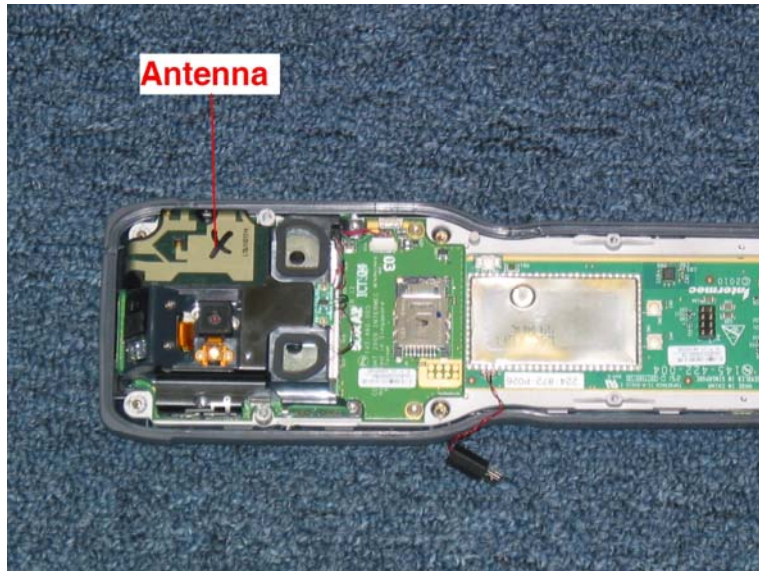
Battery



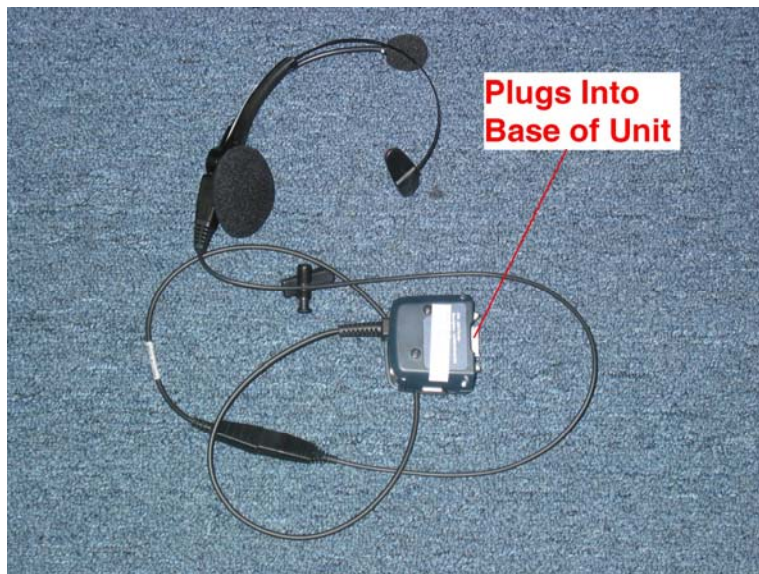
Holster



RF Module



Antenna Location



Headset for Testing