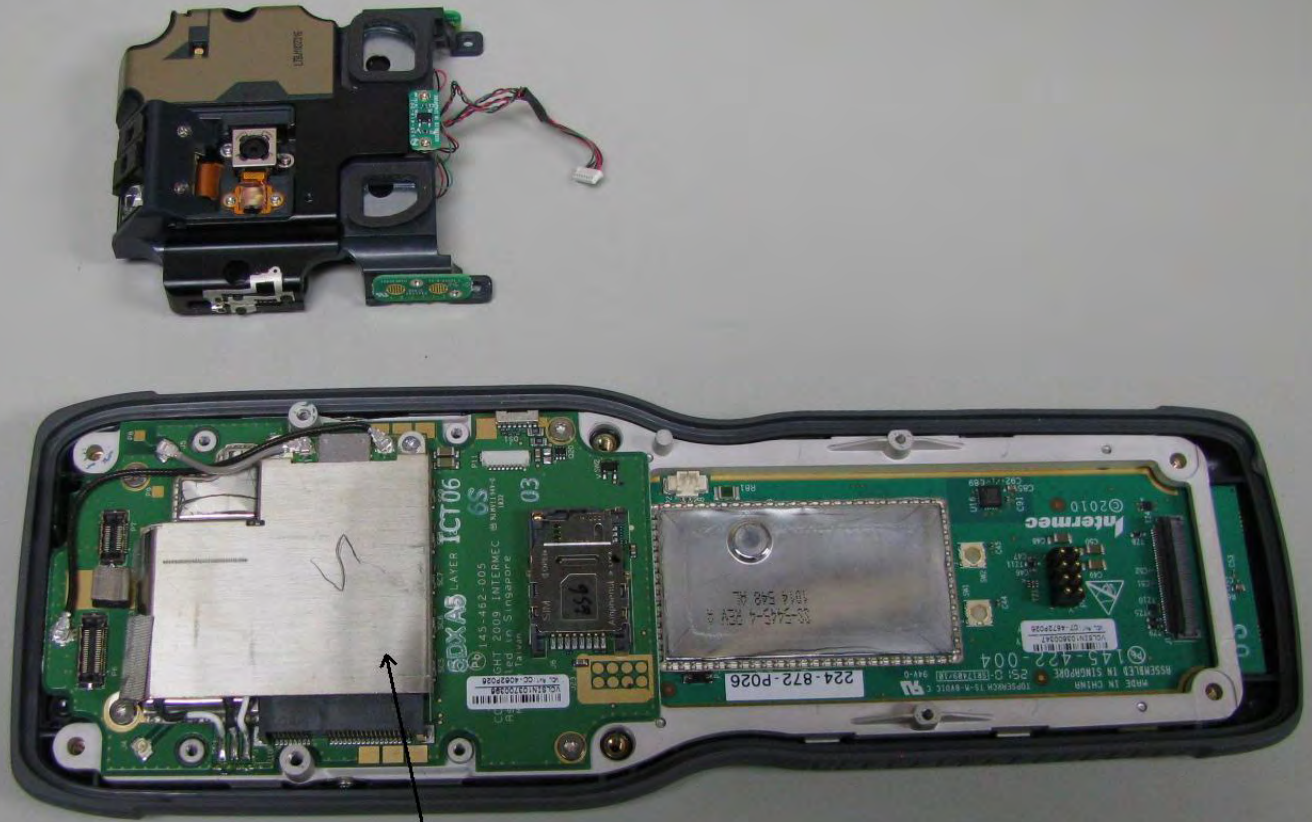


UMTS ANTENNA  
LOCATION



WLAN/BLUETOOTH  
ANTENNA LOCATION

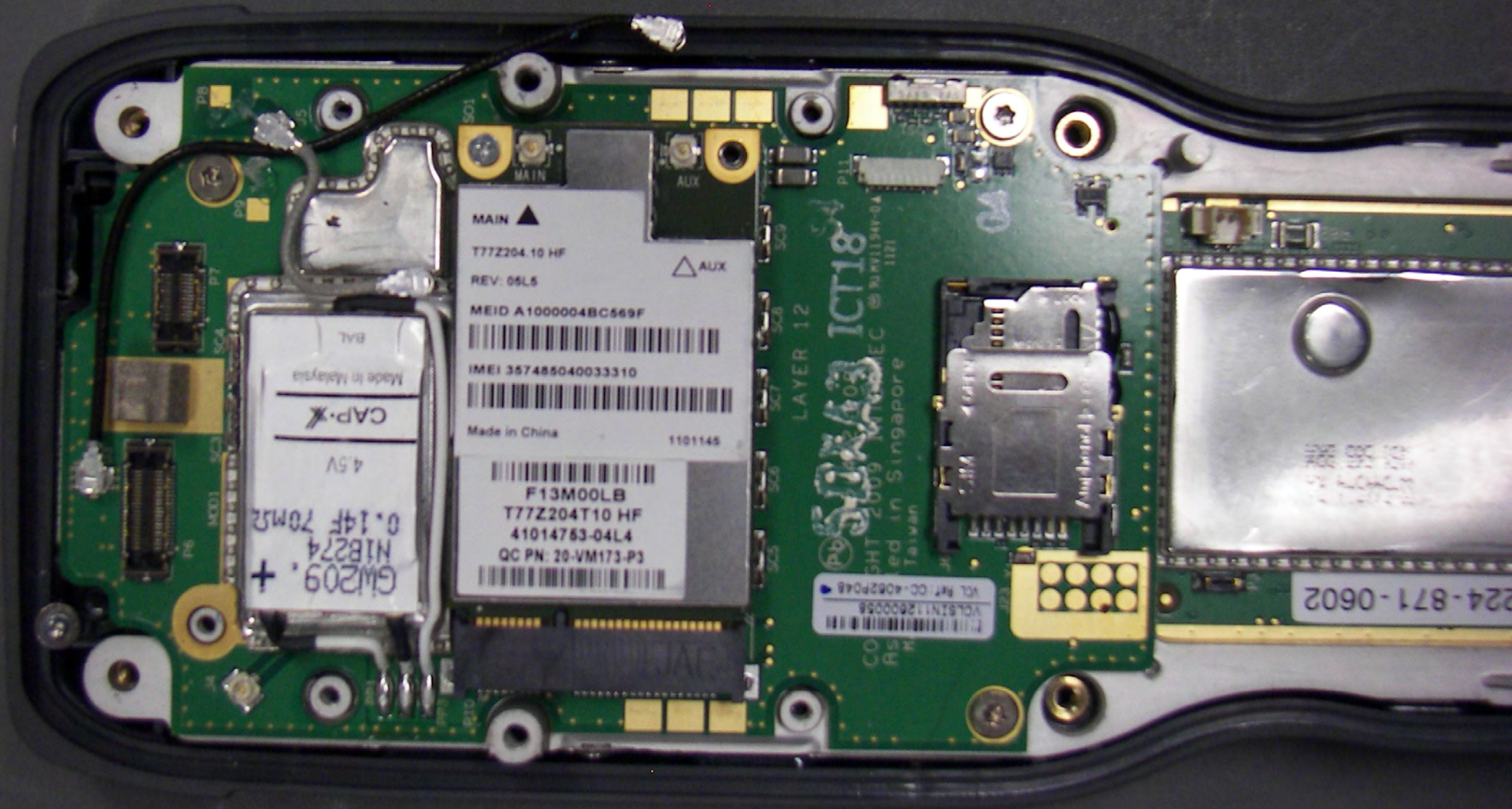


UMTS RADIO LOCATED BELOW  
THIS SHIELD

System Board with 2<sup>nd</sup> shield







MAIN ▲

T77Z204.10 HF

REV: 05L5

MEID A1000004BC569F

IMEI 357486040033310

Made in China

1101145

F13M00LB

T77Z204T10 HF

41014763-04L4

QC PN: 20-VM173-P3

GW209. +  
N1B274  
0.14F 70M2  
4.5V  
CAP. X  
Made in Malaysia  
BAL

VOL REF: CC-4062P048  
VOL SIN: 12600058  
CO. SHT 2009 MDEC @ NW1194-04  
Assembled in Singapore  
Taiwan

224-871-0602

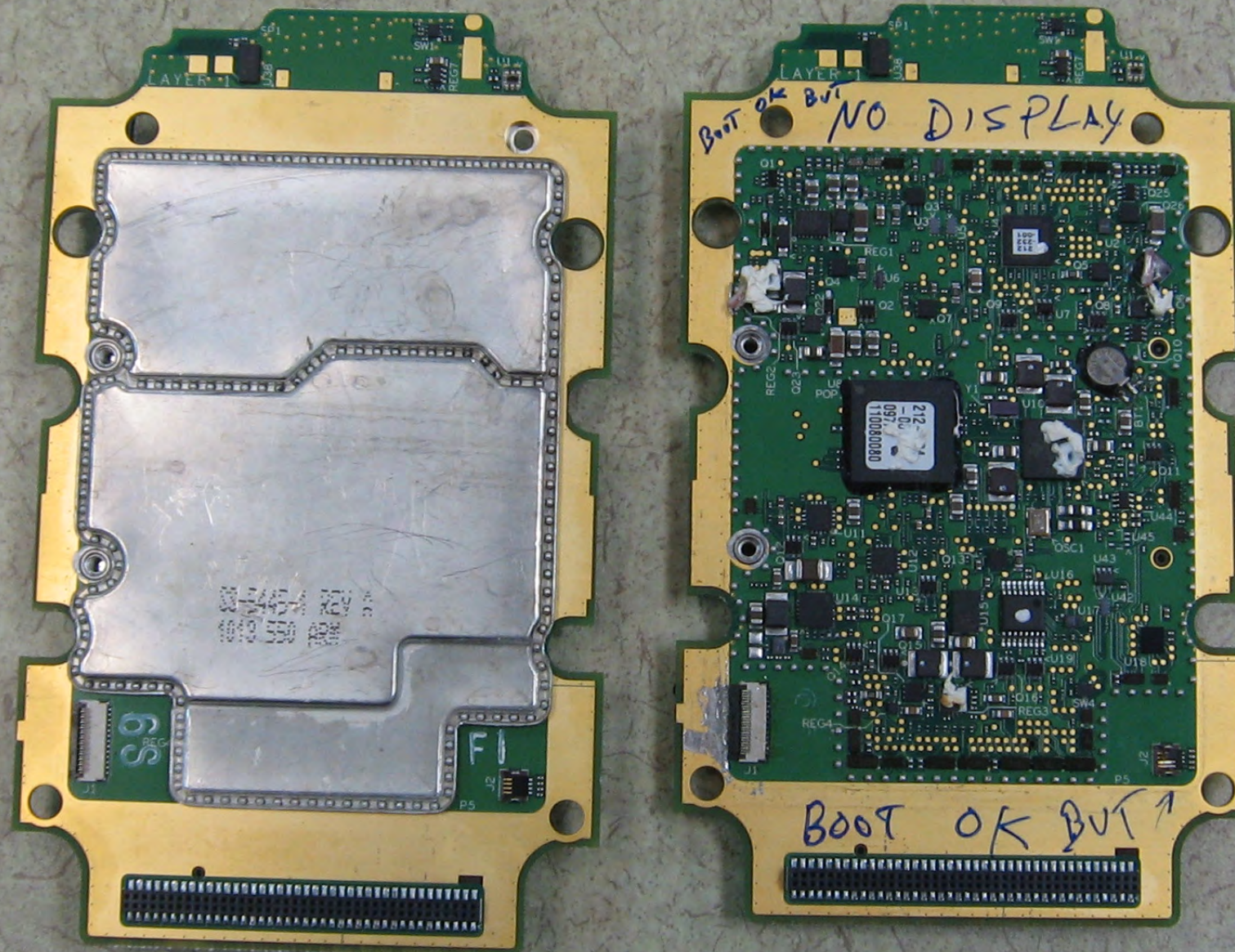


WLAN/BLEETOOTH  
RADIO

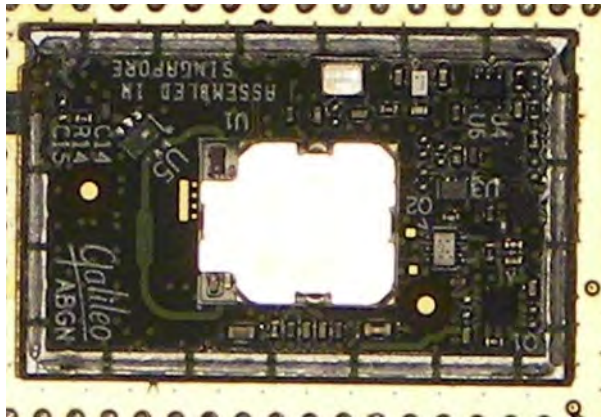




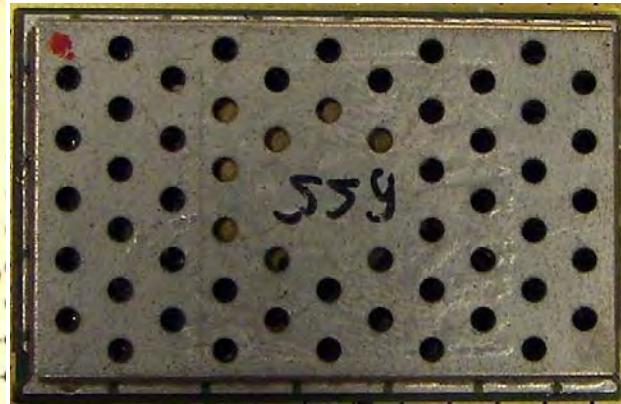
Back of System Board with and without shield







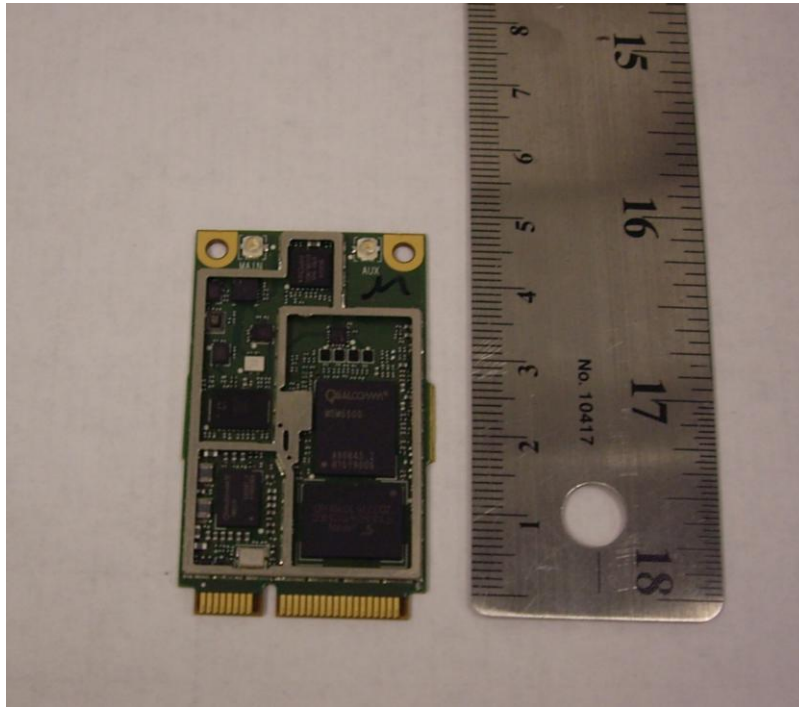
" Radio module  
without shield



" Radio module  
with shield

## UMTS Radio Module

**Figure 1 Module Top View Internal Photograph (Shield Removed)**



**Figure 2 Module Bottom View External Photograph (Label Removed)**

