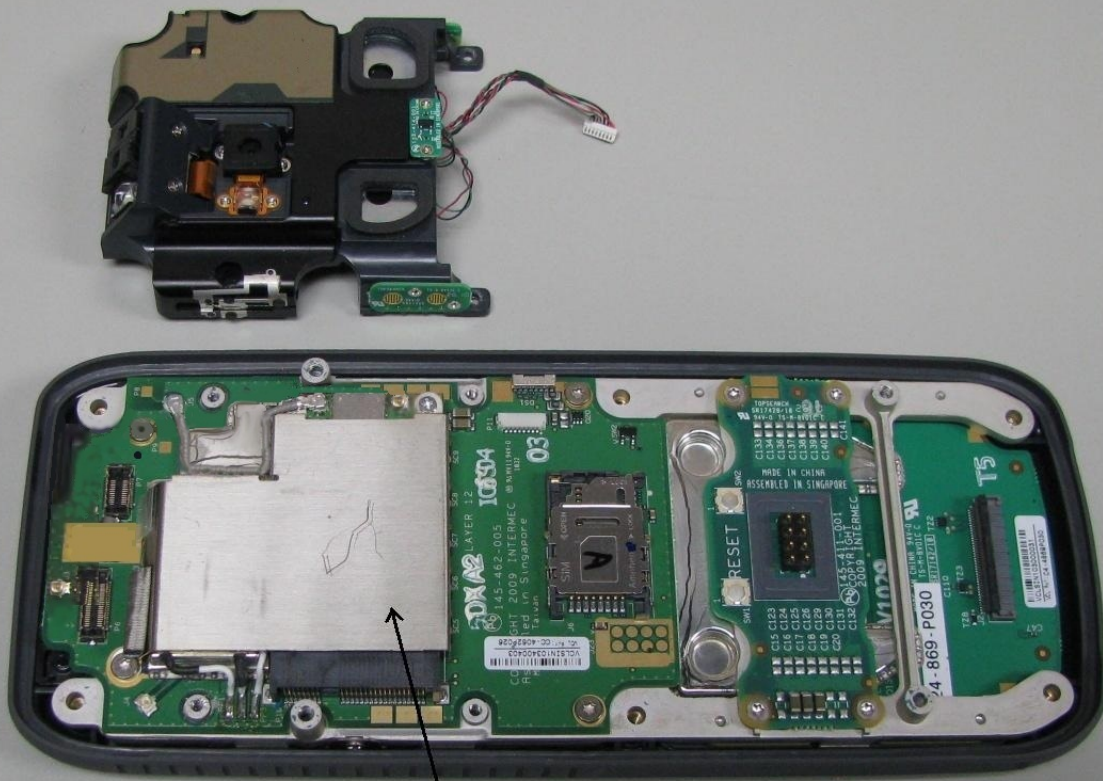




RFID ANTENNA LOCATION



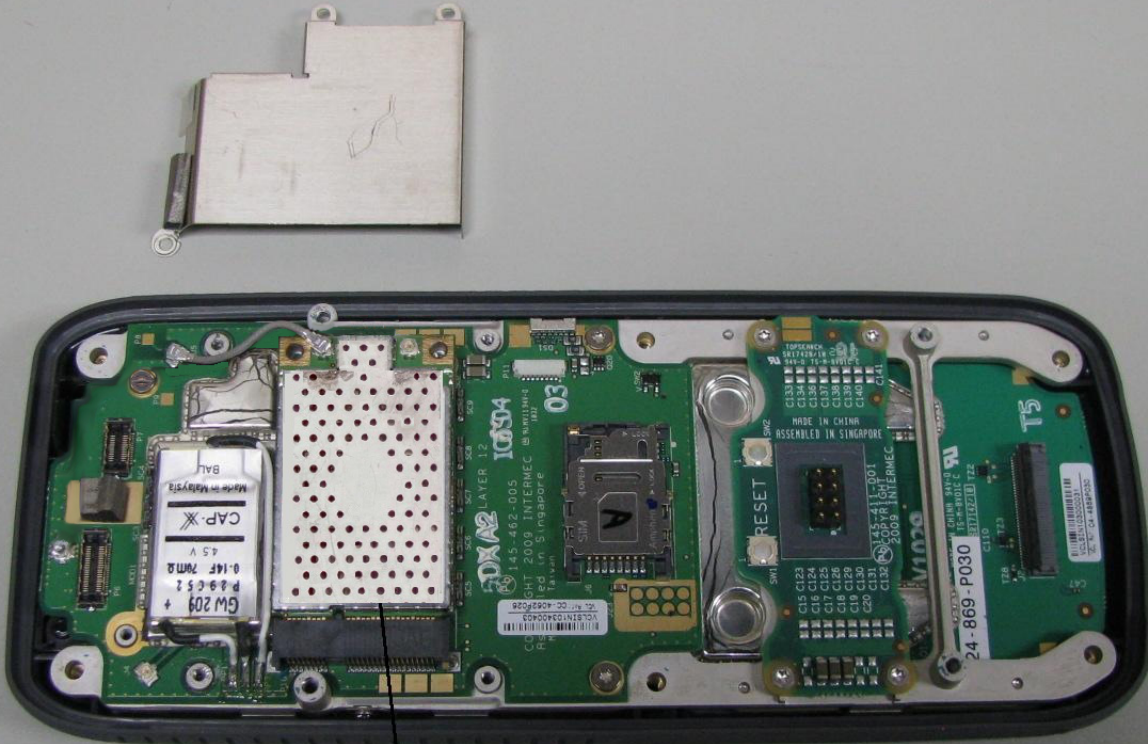
WLAN/BLUETOOTH ANTENNA LOCATION



RFID RADIO LOCATED BELOW THIS SHIELD

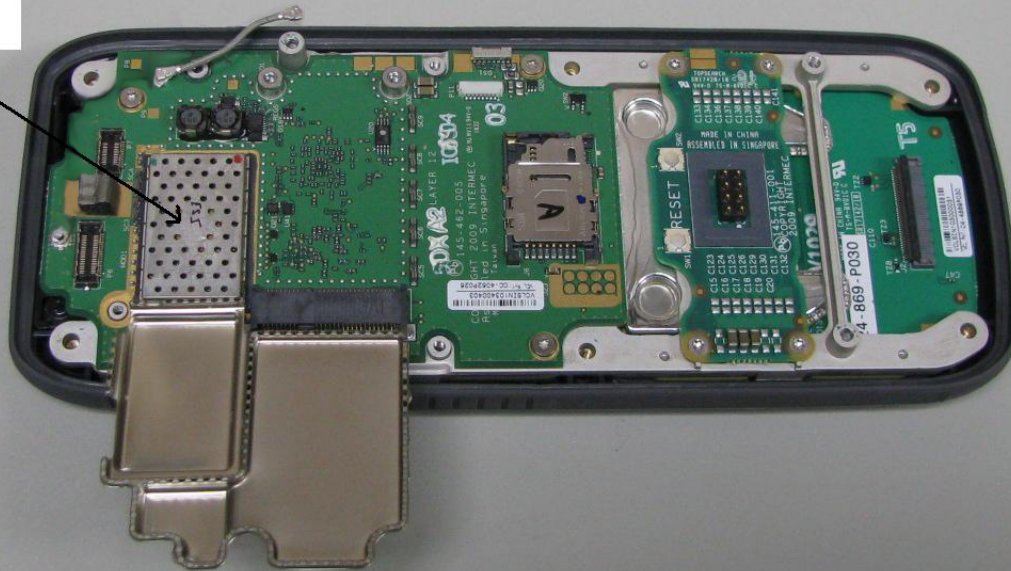
System Board with 2nd shield



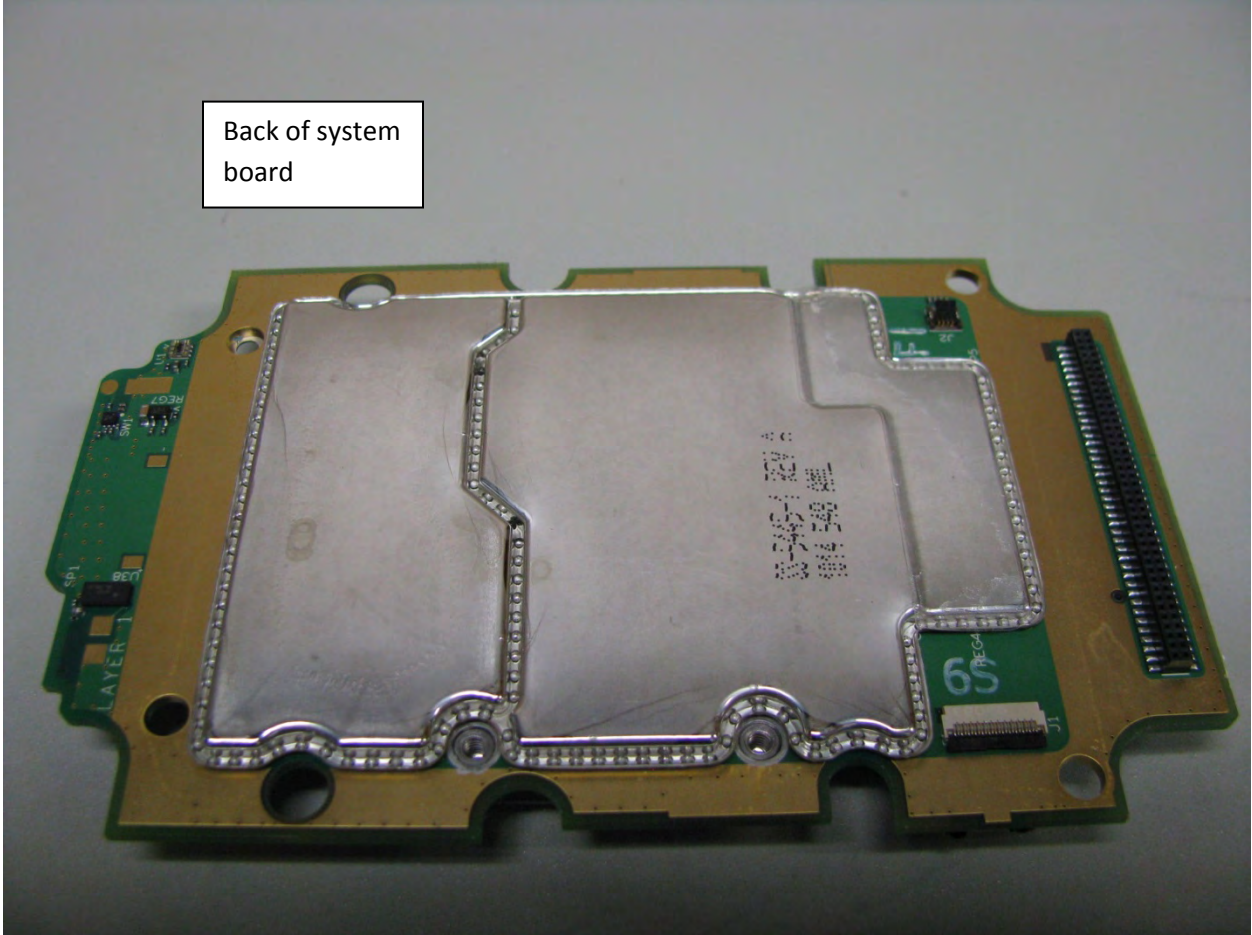


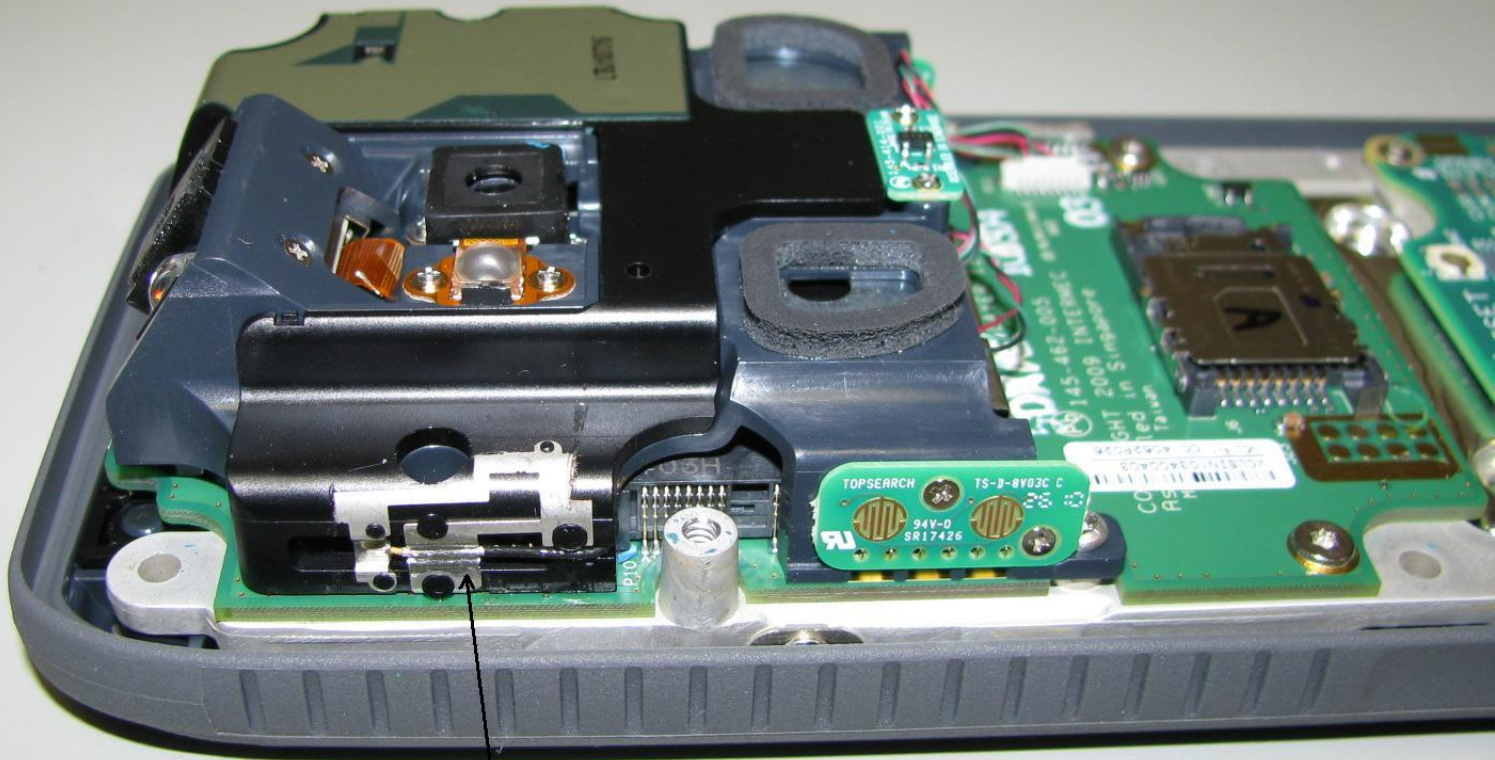
RFID RADIO

WLAN/BLUETOOTH
RADIO



Back of system board

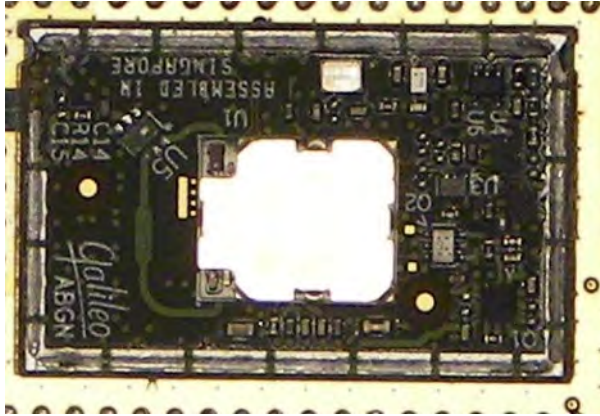




WLAN/BLUETOOTH
ANTENNA



RFID ANTENNA



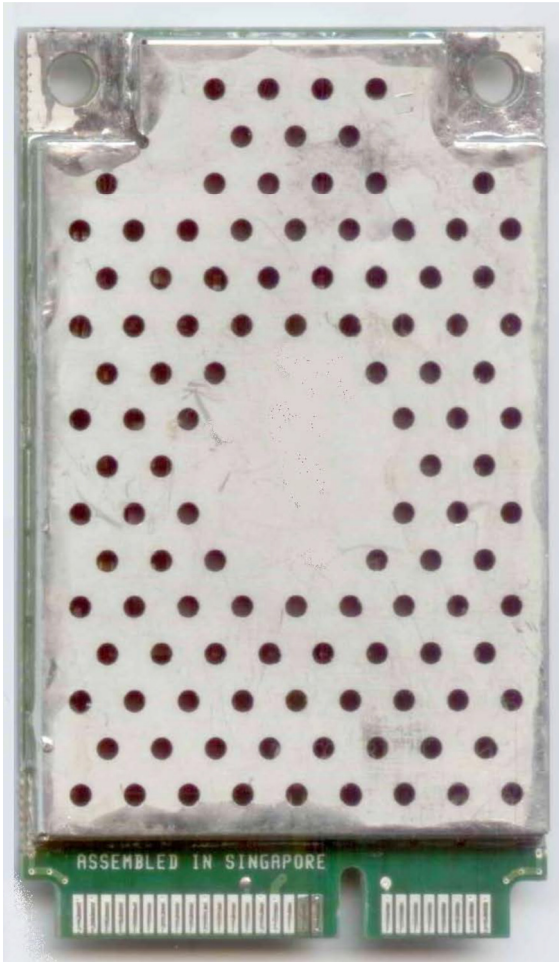
Radio module without shield



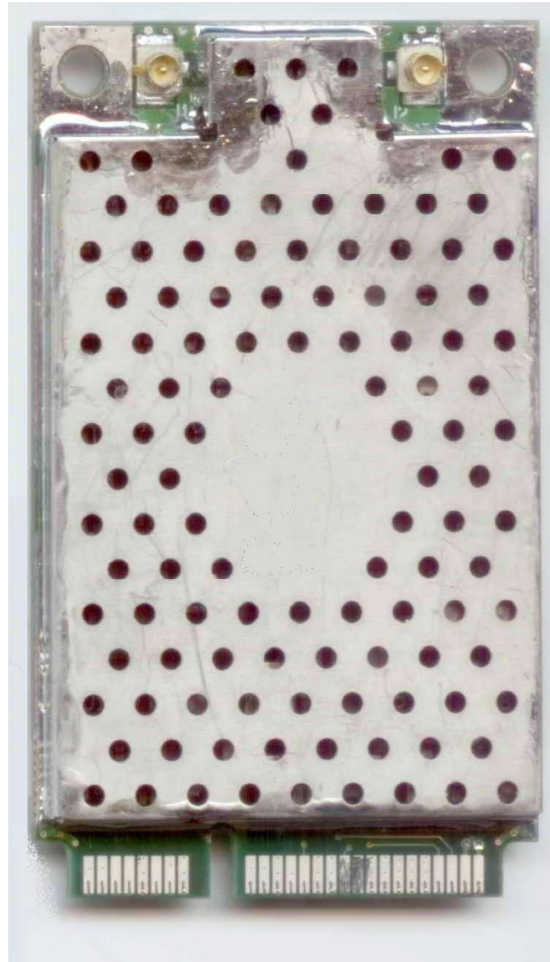
Radio module with shield

IM11 RFID module back

With shields

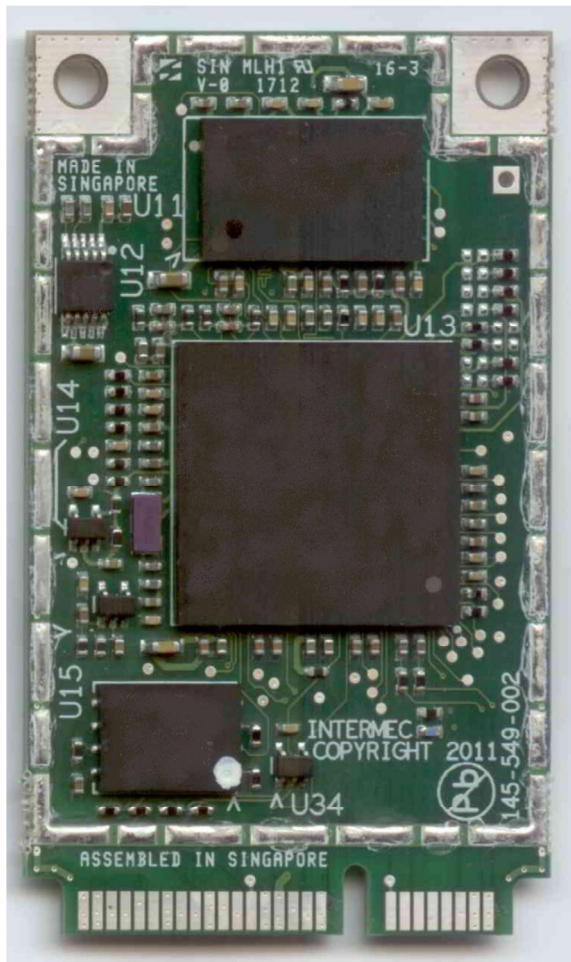


IM11 RFID module front (note antenna connectors)



M11 RFID module back

Shields removed



IM11 RFID module front (note antenna connectors)

