

Attachment 2: EUT Test Setup Photos

Front View of Conducted Test (Mode 1—Link PC, W/TMA, W/USB Cable (1.5m)+ FAIRWAY VE50-150A (Adapter))



Back View of Conducted Test (Mode 1—Link PC, W/TMA, W/USB Cable (1.5m)+ FAIRWAY VE50-150A (Adapter))



Front View of Conducted Test (Mode 2—Link PC, W/TMA, W/1394 Cable (1.5m)+LI-SHIN LSE9802B1540 (Adapter))



Back View of Conducted Test (Mode 2—Link PC, W/TMA, W/1394 Cable (1.5m)+LI-SHIN LSE9802B1540 (Adapter))



Front View of Conducted Test (Mode 3—Link PC, W/TMA, W/USB Cable (1.5m)+LI-SHIN LSE9802B1540 (Adapter))



Back View of Conducted Test (Mode 3—Link PC, W/TMA, W/USB Cable (1.5m)+LI-SHIN LSE9802B1540 (Adapter))



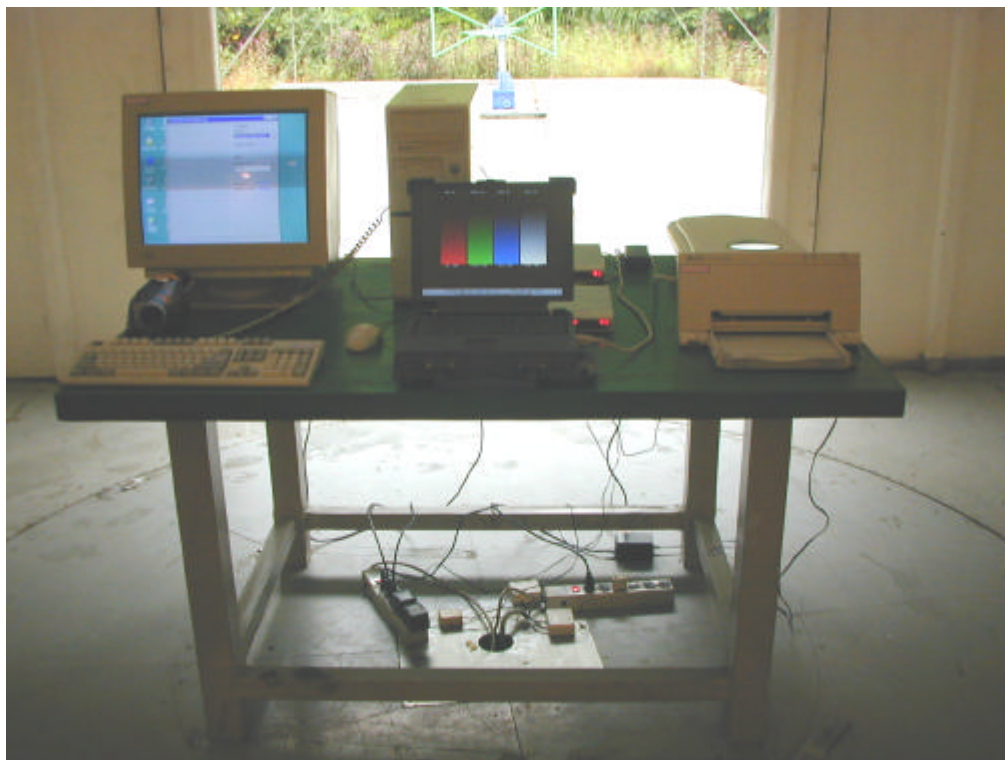
Front View of Conducted Test (Mode 4—Link PC, W/TMA, W/1394 Cable (1.5m)+ FAIRWAY VE50-150A (Adapter))



Back View of Conducted Test (Mode 4—Link PC, W/TMA, W/1394 Cable (1.5m)+ FAIRWAY VE50-150A (Adapter))



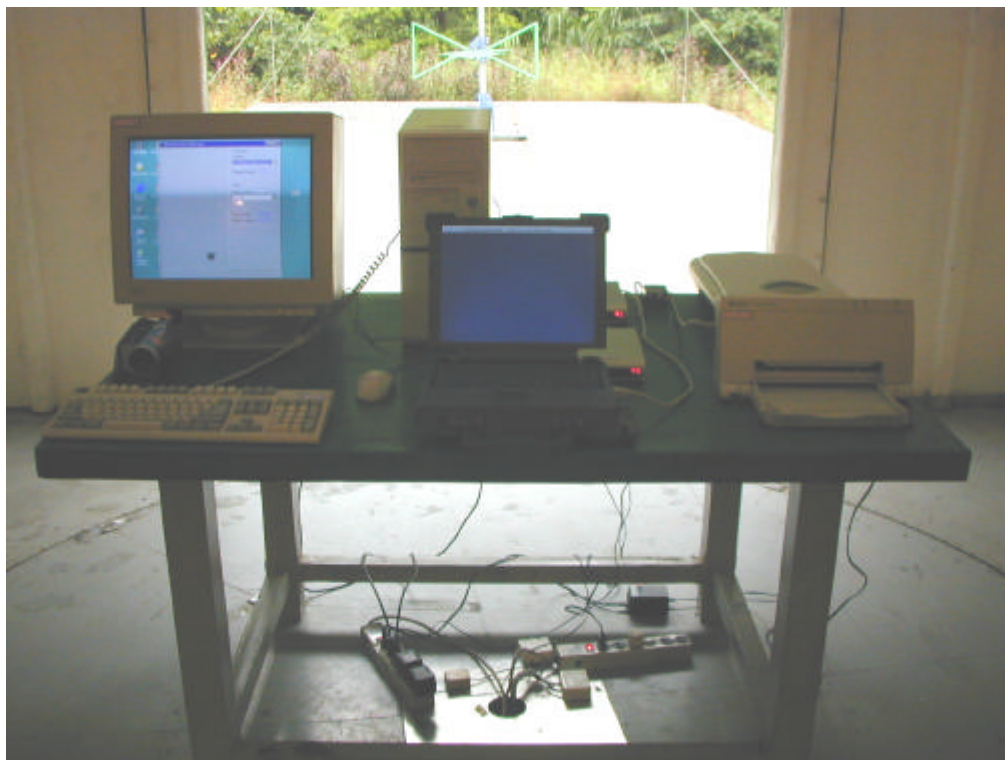
Front View of Radiated Test (Mode 1—Link PC, W/TMA, W/USB Cable (1.5m)+ FAIRWAY VE50-150A (Adapter))



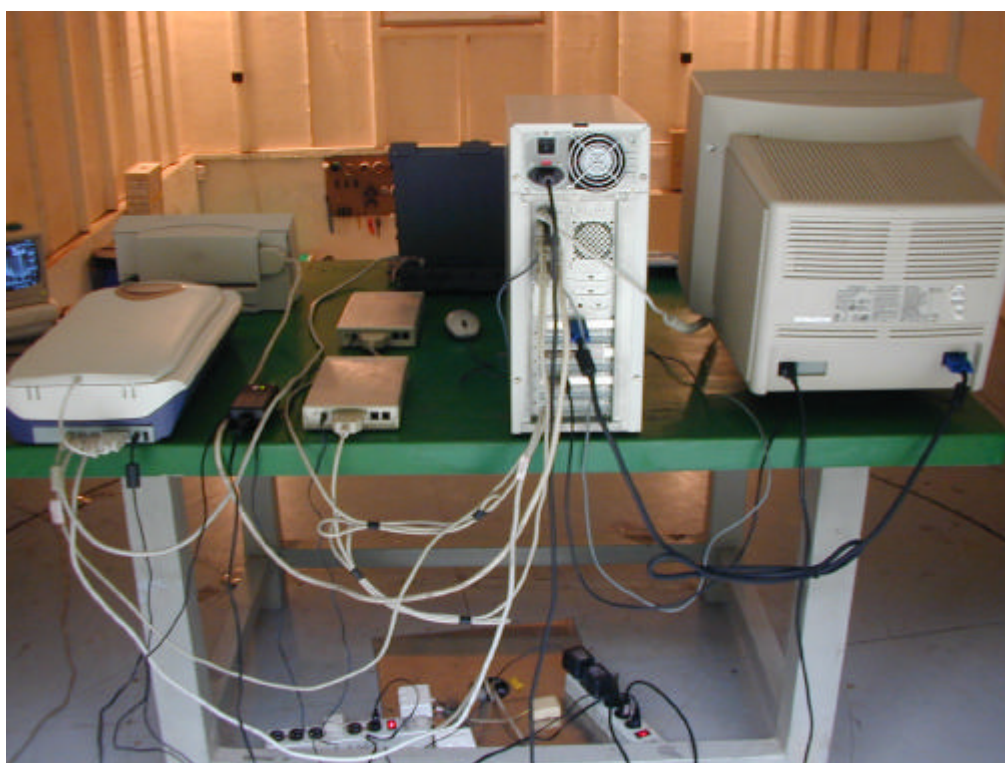
Back View of Radiated Test (Mode 1—Link PC, W/TMA, W/USB Cable (1.5m)+ FAIRWAY VE50-150A (Adapter))



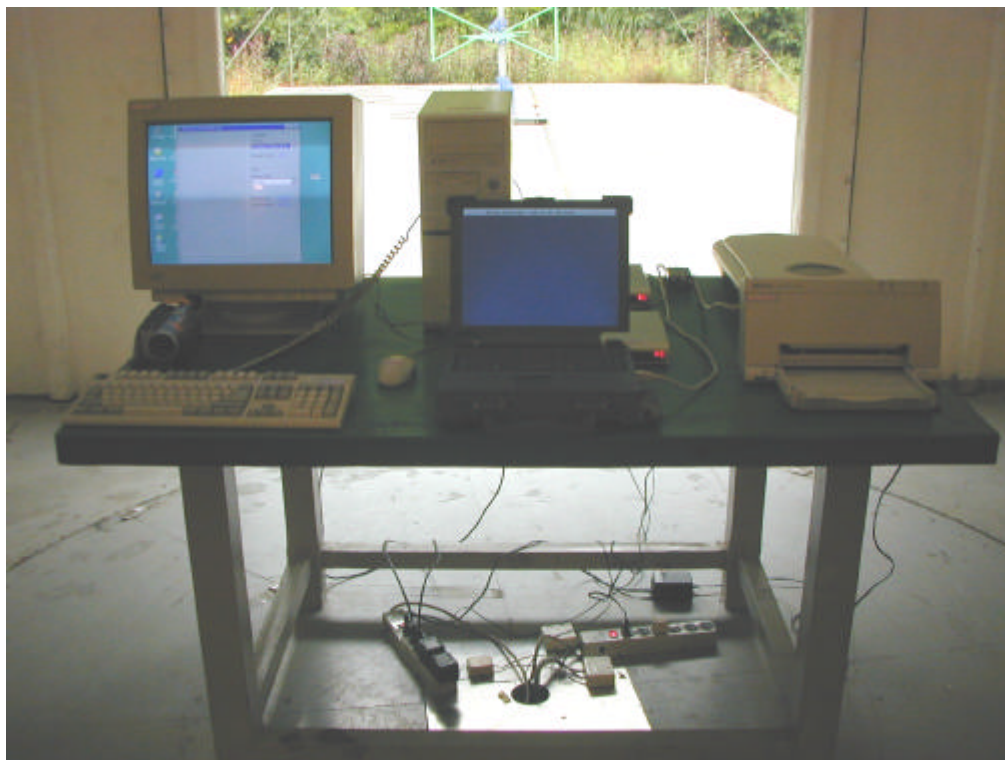
Front View of Radiated Test (Mode 2—Link PC, W/TMA, W/1394 Cable (1.5m)+LI-SHIN LSE9802B1540 (Adapter))



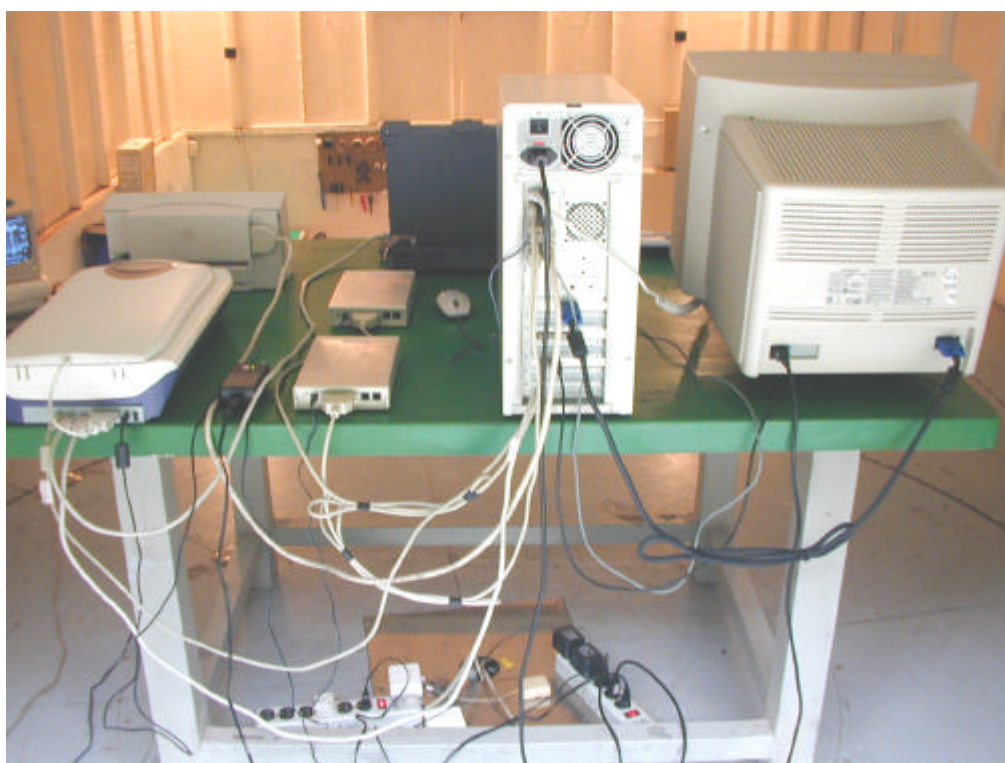
Back View of Radiated Test (Mode 2—Link PC, W/TMA, W/1394 Cable (1.5m)+LI-SHIN LSE9802B1540 (Adapter))



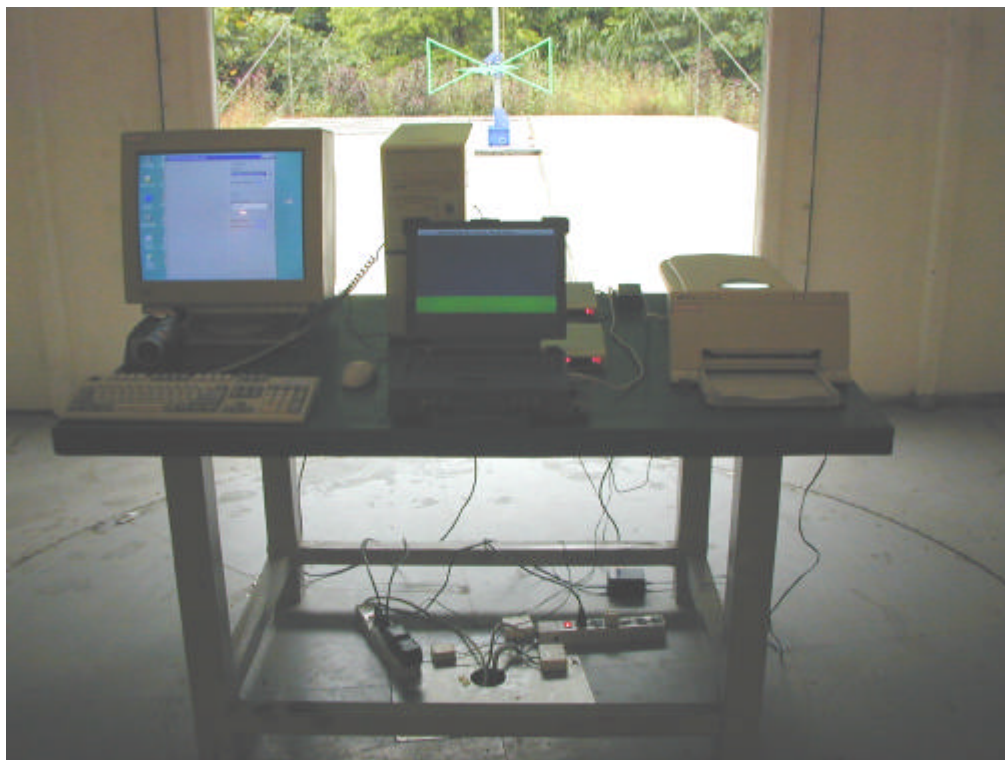
Front View of Radiated Test (Mode 3—Link PC, W/TMA, W/USB Cable (1.5m)+LI-SHIN LSE9802B1540 (Adapter))



Back View of Radiated Test (Mode 3—Link PC, W/TMA, W/USB Cable (1.5m)+LI-SHIN LSE9802B1540 (Adapter))



Front View of Radiated Test (Mode 4—Link PC, W/TMA, W/1394 Cable (1.5m)+ FAIRWAY VE50-150A (Adapter))



Back View of Radiated Test (Mode 4—Link PC, W/TMA, W/1394 Cable (1.5m)+ FAIRWAY VE50-150A (Adapter))

