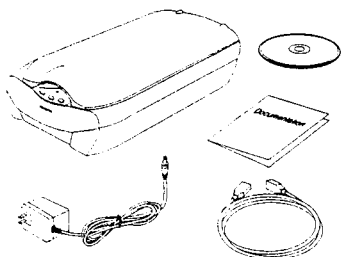


# Installing ScanMaker 3700

(for Windows and Macintosh)

## 1

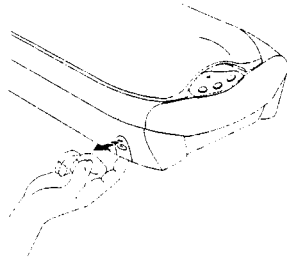


### Unpack the scanner and check components

Unpack scanner package and check for major components. Please refer to the enclosed Packing List or a detailed listing of your components.

Microtek Scanner  
Power Adapter  
USB (Universal Serial Bus) Cable  
Documentation  
Microtek CD-ROM

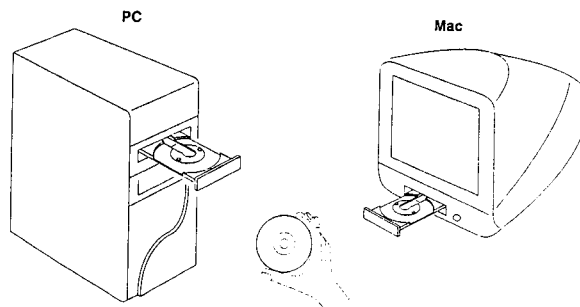
## 2



### Unlock the scanner carriage

- With the scanner turned off, tilt the scanner on its side to locate the carriage lever (located at the bottom left side).
- Pull the lever towards you slightly until you hear a "click", which indicates that the scanner carriage has been unlocked.

## 3



### Install the software

#### PC:

- Place the Microtek CD-ROM into the CD-ROM drive.
- Follow the on-screen instructions to install the driver and software. Do not turn off your computer until all the software has been installed.

*Note: If the Microtek Software Installer screen does not come up automatically, double-click the following in succession: "My Computer" on your Windows desktop; the CD-ROM icon; then cdsetup.exe to start the installer program.*

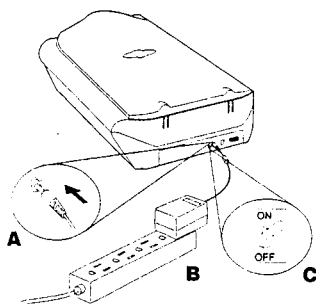
- Install the image-editing software application that came with your scanner.
- Restart your computer.

#### MAC:

- Install the image-editing software application that came with your scanner.
- Place the Microtek CD-ROM into the CD-ROM drive and install all the software components.
- Restart your computer.

# MICROTEK

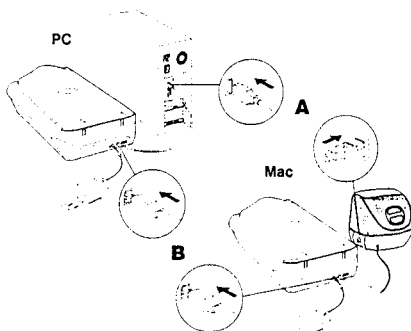
## 4



### Connect the power adapter, then turn on the scanner

- Connect the power adapter to the back of the scanner.
- Plug the power adapter into a wall outlet or power source.
- Turn your scanner on.

## 5



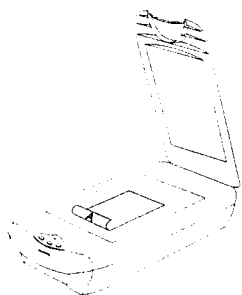
### Connect the USB cable

- Connect one end of the USB cable to your computer.
- Connect the other end of the USB cable to the USB port of the scanner.

FCC ID: EF9MR3-1200664-2

# Getting Started with ScanMaker 3700

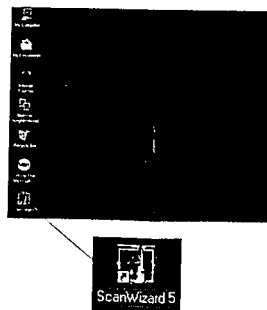
6



## Place the scan material

- Place image to be scanned on the scanner bed.
- The top of the page should be towards the front of the scanner.

7

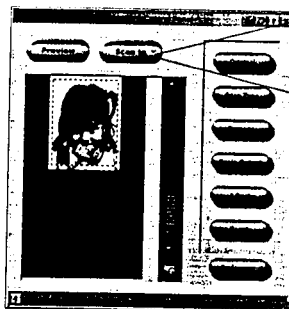


## Launch ScanWizard 5

To launch ScanWizard 5 as a stand-alone program, double-click the **ScanWizard 5** icon on your desktop.

By default, the scanner will configure the settings under (Original, Scan Type, and Purpose), and will automatically perform a "fast preview" of your image.

8



## Select preferences

You can use these tool buttons to change the settings according to your preferences.

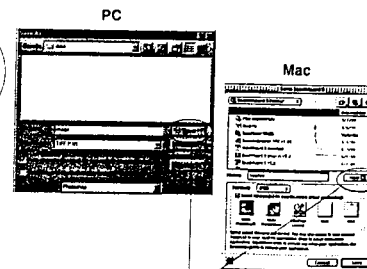
**Original** – defines category of the original (scan material).

**Scan Type** – selects output image type (color, gray, or B&W).

**Purpose** – defines image resolution to match your target application.

*Note: Click the **Scale Output**, **Adjust**, and **Reset** buttons if you need to make further adjustments.*

9A



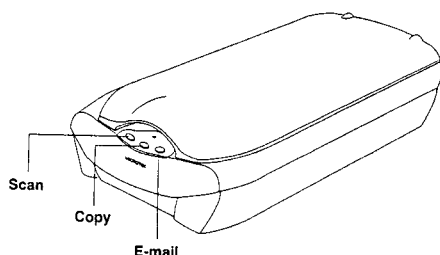
9B

## Scan your material

- Click the **Scan** to button from the ScanWizard 5 Control Panel.
- When the **Save As** dialog box appears, specify the file name with the folder location, then click **Save**. The image is then scanned and saved to the specified location.

**Send image to application after saving:**  
If this option is checked, the scanned image is first saved then automatically delivered to an image-editing software, an e-mail editor, or a web browser.

MICROTEK



## Scanner Button Controls

The **ScanMaker 3700** is equipped with three scanner buttons that give you quick access to the most frequently used functions. These buttons are **Scan**, **Copy**, and **E-mail**. The parameters for each button can be set through the Microtek Scanner Configuration (MSC) utility. However, it is suggested that you exit **ScanWizard 5** before accessing this utility.

To launch the **MSC** utility, you can either: (For PCs) Go through the Windows menu – click Start, Programs, ScanWizard 5, MSC.

### Scan

Captures high resolution images with outstanding quality that can automatically be saved as files or sent to another application for further processing.

### Copy

Scans the image and sends it to your printer, transforming your scanner and printer into a convenient copy station. Simply specify the number of copies you want.

**QTK2000-F011**

**Microtek USB Scanner, Model MRS-1200G6U-2 Series**

**FCC ID: EF9MRS-1200G6U-2**

### Federal Communication Commission Interference Statement

This equipment has been tested and found to comply with the limits for a Class B digital device, pursuant to Part 15 of the FCC Rules. These limits are designed to provide reasonable protection against harmful interference in a residential installation. This equipment generates, uses and can radiate radio frequency energy and, if not installed and used in accordance with the instructions, may cause harmful interference to radio communications. However, there is no guarantee that interference will not occur in a particular installation. If this equipment does cause harmful interference to radio or television reception, which can be determined by turning the equipment off and on, the user is encouraged to try to correct the interference by one of the following measures:

- Reorient or relocate the receiving antenna.
- Increase the separation between the equipment and receiver.
- Connect the equipment into an outlet on a circuit different from that to which the receiver is connected.
- Consult the dealer or an experienced radio/TV technician for help.

FCC Caution: To assure continued compliance, use only the provided shielded interface cable with ferrite core when connecting to computer. Any changes or modifications not expressly approved by the party responsible for compliance could void the user's authority to operate this equipment.