

## Federal Communications Commission (FCC) Statement

### RADIO FREQUENCY INTERFERENCE STATEMENT

This equipment has been tested and found to comply with the limits for a Class B digital device, pursuant to Part 15 of the FCC rules. These limits are designed to provide reasonable protection against harmful interference in a residential installation. This equipment generates, uses and can radiate radio frequency energy and if not installed and used in accordance with the instructions, may cause harmful interference to radio communications. However, there is no guarantee that interference will not occur in a particular installation. If this equipment does cause harmful interference to radio or television reception, which can be determined by turning the equipment off and on, the user is encouraged to try to correct the interference by one or more of the following measures:

- Reorient the receiving antenna.
- Increase the separation between the equipment and receiver.
- Connect the equipment into an outlet on a circuit different from that to which the receiver is connected.
- Consult the dealer or an experienced radio/TV technician for help.

Any special accessories needed for compliance must be specified in the instruction manual.

Warning: A shielded-type power cord is required in order to meet FCC emission limits and also to prevent interference to the nearby radio and television reception. It is essential that only the supplied power cord be used.

Use only shielded cables to connect I/O devices to this equipment.

You are cautioned that changes or modifications not expressly approved by the party responsible for compliance could void your authority to operate the equipment.

# Microtek Scanner Installation Guide for SlimScan C6

**Built-in  
EPP**

**WINDOWS**

## Basic Requirements

- IBM-PC 486, Pentium, or compatibles with built-in plug-and-play BIOS system
- Microsoft Windows 95, NT or Windows 3.1x
- CD-ROM drive (internal or external)
- 16MB RAM
- At least 40MB hard disk with 15MB available
- Super VGA Color display with 256 colors or better

**Important Note:** Before using the scanner and software, you should read this Microtek Scanner Installation Guide first.

## Installing under Windows 95

### 1. Unpack your scanner and check components

Open your scanner package and check the components as stated in your packing list. Do Not install any of the software until the hardware has been installed.

Before proceeding any further, check that you have all the illustrated items below.

### Contents

#### Installing under Windows 95

Step 1	Unpack your scanner and check components .....	1
Step 2	Connect the scanner to your computer .....	2
Step 3	Install the scanner software .....	3
Step 4	Test your scanner .....	4
Installing under Windows 3.1x .....		5
Installing under Windows NT 4.0 .....		6

Scanner



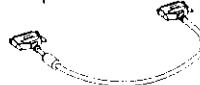
Installation Guide



Power Adapter



25-25 pin Cable



CD-ROM



## 2. Connect the scanner to your computer

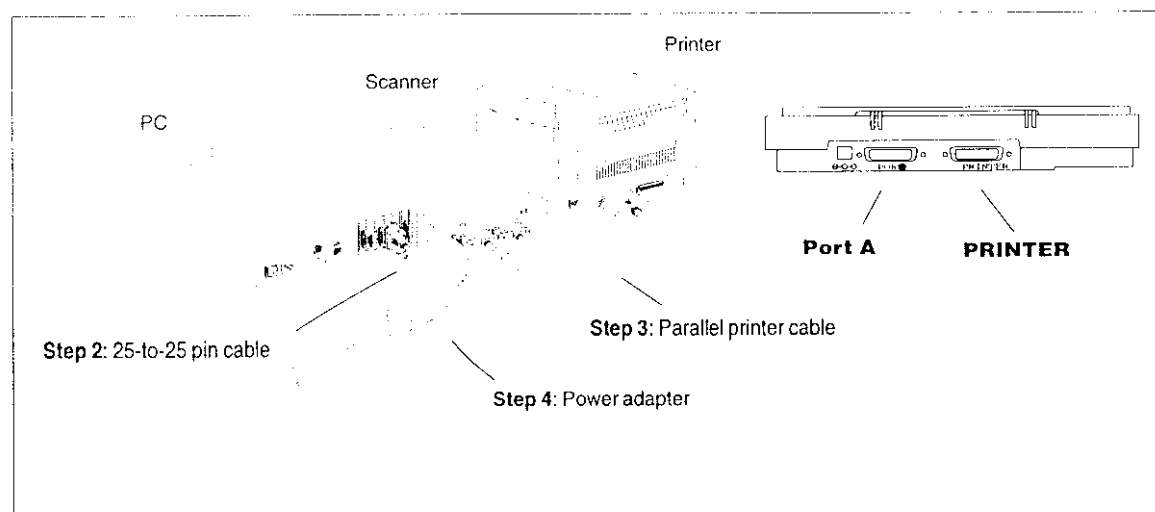
1. Turn off your computer and printer, and remove the parallel printer cable or any device (e.g. Keypro) from the computer's parallel port and connect it to the **Port A** of your scanner.
2. Connect the 25-to-25 pin cable at both the scanner's 25-pin **Port A** and your computer's parallel port.
3. Connect your original parallel printer cable to the scanner's 25-pin socket port (labeled **PRINTER**) and your printer jack.
4. Plug one end of the power cord to the power connector at the back panel of the scanner and the other end of the connector to your AC power source.
5. Power up your scanner. The Ready indicator (green light) on the front panel of the scanner flashes briefly. After a few seconds, the Ready indicator stops blinking and stays lit, the scanner is ready.
6. Turn on your computer, and check to make sure that your computer is configured as an EPP mode. Refer to the BIOS section of your PC's user manual.

Most computers allow you to quickly press the **Del** key several times while powering up. Then the screen displays 3 mode selections: ECP, EPP, and Standard. Choose EPP mode, then restart your computer to activate the settings you have made.

**Technical Note:** For fastest scanning, your parallel port should be set for EPP (Enhanced Parallel Port) mode. This is usually configured in your system BIOS. If you encounter communication problems using the EPP setting, try changing this to bi-directional or Compatible mode. Please see the documentation that came with your computer for more information about checking or changing BIOS settings.

7. When your computer is restarted, Windows 95 is launched as well.

*Note: When running Windows 95, Always turn on the scanner before the computer. If you don't, Windows will not be able to "see" your scanner.*



### 3. Install the scanner software

Before you begin installing software, make sure your scanner is connected to the computer with the 25-to-25 pin cable and that the scanner power is turned on.

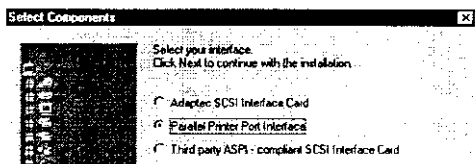
1. Insert the Microtek CD-ROM into your CD-ROM drive. The installer program should come up automatically and list available software programs for you.
2. Select the software you want to install, then click the **Install** button. The installer will set up these applications for you.

*Note:* If the Microtek installer is not automatically displayed on the screen, click **Start**, select **Run**, type `d:\cdsetup.exe`, and click **OK**; where *d* is the drive letter for your CD-ROM. If your CD-ROM has a different drive letter than *d*, you must substitute that drive letter for *d*.

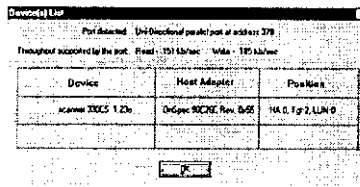
#### Install Microtek ScanWizard

Microtek ScanWizard is the Twain driver used for the scanner to communicate with various applications. Microtek ScanWizard cannot be used by itself and requires another program in order to work.

1. Select the "Microtek ScanWizard" option, then follow the instructions on the screen to start the installation.
2. In the "Select Components", choose "Parallel Printer Port Interface" option as your interface.



3. If you have HP series printer driver in your system, click **Yes** to accept printer in daisy chain with the parallel printer port device.
4. Click **Yes** to check the peripheral environment related to your scanner. The result of the check is displayed, as shown below.



Make sure the **Tgt** option displays a SCSI ID number between 1 and 6, then continue.

5. Click **Yes** to let SwissKnife utility to detect if you want to.
6. When installation is complete, the **Microtek ScanWizard for Windows 95** group appears as a folder in the **Programs** menu.

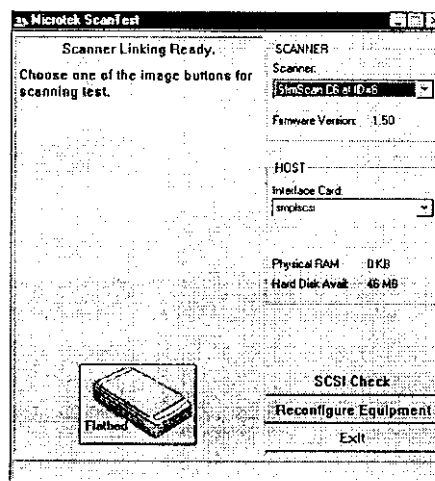
The SwissKnife utility program checks your cables and the status of your scanner. SwissKnife runs under Windows 95 only.

#### Install applications

The bundled application that came with your CD-ROM varies depending on marketing strategies. Install some or all for your needs.

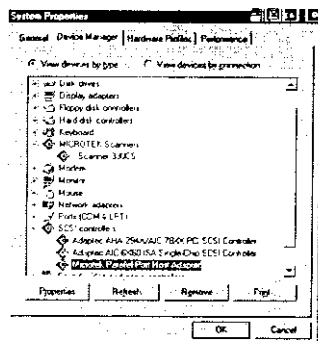
### Test your scanner

Restart your computer, and start up **Scanner Test**. The scanner test reports the detected scanner model and the interface card — `smplscsi`. You are now ready to scan.

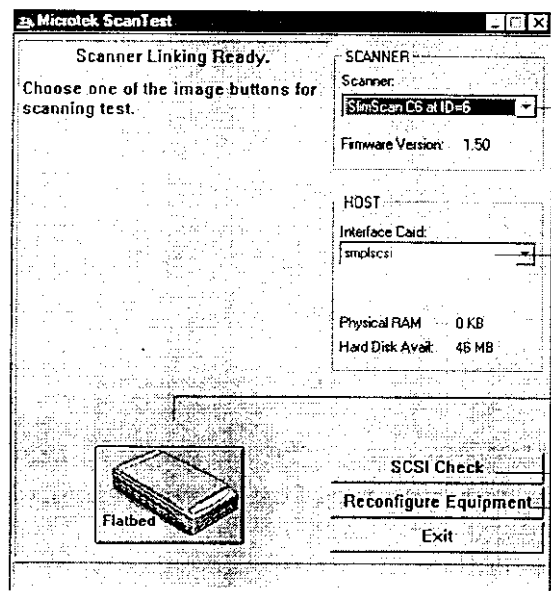


## 5. Test your scanner

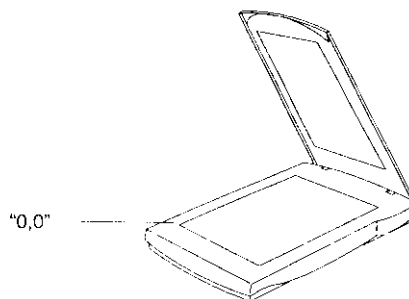
1. Restart Windows 95. Click Start, Settings, and select Control Panel.
2. Double-click on the System icon in Control Panel, then select Device Manager from the top.
3. Double-click on "SCSI controllers", you can find "Microtek Parallel Port Host Adapter" list here. The scanner is ready to scan.



4. Start up Scanner Test from the Microtek ScanWizard for Windows 95 folder in the Programs menu. When started up successfully, the screen below appears.



5. Click the Flatbed button.
6. Place your document face down on the scanner glass. The top left corner of the document should be at the "0,0" position on the ruler guides running alongside the scanner.



7. A gray scale preview of your image will be displayed in the Microtek ScanTest window.
8. Close and exit Microtek ScanTest.
9. To scan the document, start up your software application to bring up the Microtek ScanWizard, click on the Scan button in the Preview window. The image will be scanned and delivered to your software application, where it can be saved as a file.

For more details on how to operate your scanner with Microtek ScanWizard, refer to the *Microtek ScanWizard Reference Manual* in your CD-ROM.

The detected scanner and its SCSI ID number.

The "smptscsi" means you are using Parallel Port interface.

The "Flatbed" button.

The SCSI Check feature acts as a SCSI probe to verify the location of your scanner and the scanner ID.

The Reconfigure Equipment feature allows the system to update its own internal reference file and is useful when you have changed your setup or reconfigured your system.

## Installing under Windows 3.1x

English

The instructions below pertain to installation of the software that came with your scanner under Windows 3.1x. Follow the steps below:

1. Unpack your scanner and check components
2. Connect the scanner to your computer

Only when you have completed the above steps should you proceed with installing the software. See the previous sections of this document for instructions on performing the above.

### Install the scanner software

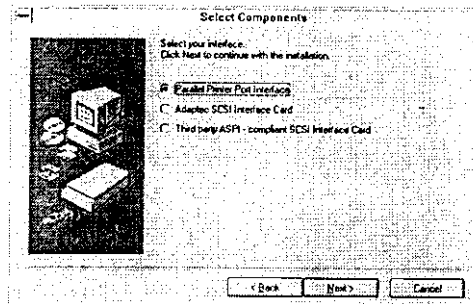
Before you begin installing software, make sure your scanner is connected to the computer with the 25-to-25 pin cable. Make sure the scanner is turned on.

1. Insert the Microtek CD-ROM into your CD-ROM drive.
2. Launch Windows. From the Program Manager, choose File, Run, type `d:\cdsetup.exe`, and click OK; where d: is the drive letter for your CD-ROM. If your CD-ROM has a different drive letter than d; you must substitute that drive letter for d:. The Installer should come up and list available software for you.
3. Select the software you want to install, then click the Install button. The installer will set up these applications for you.

### Install Microtek ScanWizard

Microtek ScanWizard is the Twain driver used for the scanner to communicate with various applications. Microtek ScanWizard cannot be used by itself and requires another program in order to work.

1. Select the "Microtek ScanWizard" option, then follow the instructions on the screen to start the installation.
2. In the "Select Components", choose "Parallel Printer Port Interface" option as your interface.



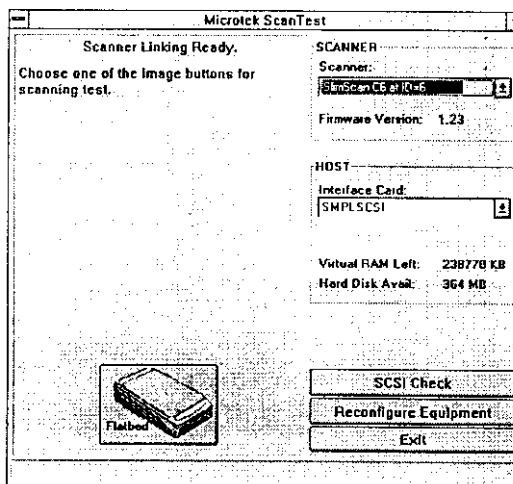
3. When installation is complete, the Microtek ScanWizard for Windows will appear in its own group window, and the AUTOEXEC.BAT file will be modified accordingly.

### Install applications

The bundled application that came with your CD-ROM varies depending on marketing strategies. Install some or all for your needs.

### Test your scanner

Restart your computer, and start up Scanner Test from the Microtek ScanWizard for Windows group. The scanner test reports the detected scanner model and the interface card — `smplscsi`. You are now ready to scan.



## Installing under Windows NT 4.0

The instructions below pertain to installation of the software that came with your scanner under Windows NT 4.0. Follow the steps below:

1. Unpack your scanner and check components
2. Connect the scanner to your computer

Only when you have completed the above steps should you proceed with installing the software. See the previous sections of this document for instructions on performing the above

### Install the scanner software

Before you begin installing software, make sure your scanner is connected to the computer with the 25-to-25 pin cable. Make sure the scanner is turned on.

1. Launch Windows NT 4.0, log in as Administrator. Insert the Microtek CD-ROM into your CD-ROM drive. The installer program should come up automatically and list available software for you.
2. Select the software you want to install, then click the **Install** button. The installer will set up these applications for you.

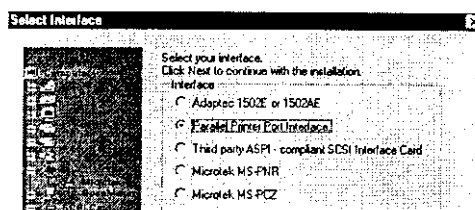
*Note: If the Microtek installer program is not automatically displayed on the screen, click **Start**, select **Run**, type `d:\cdsetup.exe`, and click **OK**; where `d:` is the drive letter for your CD-ROM. If your CD-ROM has a different drive letter than `d:`, you must substitute that drive letter for `d:`.*

#### Install Microtek ScanWizard

Microtek ScanWizard is the Twain driver used for the scanner to communicate with various applications. Microtek ScanWizard cannot be used by itself and requires another program in order to work.

1. Select the "Microtek ScanWizard" option, then follow the instructions on the screen to start the installation.

2. In the "Select Components", choose "Parallel Printer Port Interface" option as your interface.



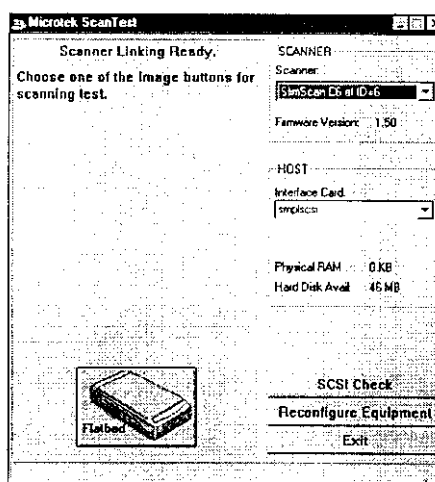
3. When installation is complete, the Microtek ScanWizard for Windows NT group appears as a folder in the **Programs** menu.

#### Install applications

The bundled application that came with your CD-ROM varies depending on marketing strategies. Install some or all for your needs.

### Test your scanner

Restart your computer, and start up Scanner Test from the Microtek ScanWizard for Windows NT in the programs menu. The Scanner Test reports the detected scanner model and the interface card -- `simplscsi`. You are now ready to scan.





### Federal Communications Commission (FCC) Statement

This equipment has been tested and found to comply with the limits for a Class B digital device, pursuant to Part 15 of the FCC Rules. These limits are designed to provide reasonable protection against harmful interference in a residential installation. This equipment generates, uses and can radiate radio frequency energy and, if not installed and used in accordance with the instructions, may cause harmful interference to radio communications. However, there is no guarantee that interference will not occur in a particular installation. If this equipment does cause harmful interference to radio or television reception, which can be determined by turning the equipment off and on, the user is encouraged to try to correct the interference by one or more of the following measures:

- Reorient/relocate the receiving antenna.
- Increase the separation between the equipment and receiver.
- Connect the equipment into an outlet on a circuit different from that to which the receiver is connected.
- Consult the dealer or an experienced radio/TV technician for help.

*Note: Shielded interface cable with ferrite core installed on scanner connector end must be used with this equipment.*

Trade Name

Model Name

SlimScan C6 (Scanner 636CS)

MCS-1200P

#### CAUTION

Changes or modifications not expressly approved by the manufacturer responsible for compliance could void the user's authority to operate the equipment.





## Specifications

Model Name	Scanner 636CS
Model number	MCS-1200P
Type	Desktop, Flatbed, Single pass
Resolution	600 dpi(H) x 1200dpi(V)
Sample depth	12 bits per color with Dual Optimization Technology
Calibration time	5sec. (gray) 8sec. (color)
Scanning speed (at 600 dpi)	Line-art: 15 ms /line Gray: 15 ms/line Color: 30 ms/line Preview: 28s, Letter size
Transmission speed	1Mbyte/s
Scanning Area	
Minimum	16 pixels x 16 pixels
Maximum	215.8 mm x 294.7 mm (8.5" x 11.6")
Warm up time	30sec. 1min. for image quality level
Power Supply	100 V to 240 V(-10% to +10%)
Voltage Frequency	57 Hz to 63 Hz (USA) 47 Hz to 63 Hz (other countries)
Power Consumption	12W max
Dimensions	10.4" x 1.7" x 16.4"
Weight	3.2 kg