

Welcome to TabletWorks v6.0 HELP

The CalComp TabletWorks Control Panel (and its various display windows) constitutes a powerful user interface with the TabletWorks application.

TabletWorks v6.0 HELP file is designed to provide easy access to information about TabletWorks Control Panel from a user's perspective.

The goal is to enable your

- *proficient,*
- *productive, and*
- *pleasurable*

use of the CalComp TabletWorks Control Panel interface for Windows 95 and Windows NT.

If you have any comments or questions, please [Contact CalComp](#).



FCC ID: ECP11180
MODELS 11180, 11180A
35180 OR 35180

MANUAL

Scrolling

TabletWorks v6.0 introduces several new scrolling features.

AutoScroll Feature

QuickScroll Drag Feature

QuickScroll Up and QuickScroll Down Features

Check the descriptions below to see how the features are used.

Note: The "**When is it available**" section of the tables below indicates whether the feature is available on your pointing device.

AutoScroll Feature

<u>Definition:</u>	The AutoScroll feature enables the user to scroll quickly in an application by entering a 'teleprompting' mode.
<u>How is it initiated:</u>	This mode is enabled (toggled on and off) by clicking a button that the user has assigned to the AutoScroll feature.
<u>How is it used:</u>	Enable the mode. An anchored center point will appear on the screen. Move the mouse pointer away from the center point; the application will scroll in that direction.
<u>When is it available:</u>	This feature is available for the Digital Mouse and the 16-button Mouse. However, this feature is implemented by the application, so it is application dependent. Some applications may not support the AutoScroll feature.

QuickScroll Up and QuickScroll Down Features

<u>Definition:</u>	These features are a simple, typical implementation of scrolling.
<u>How is it initiated:</u>	The features are used by clicking a button that the user has assigned to the QuickScroll Up or QuickScroll Down features.
<u>How is it used:</u>	Click a button that you have assigned as the QuickScroll Up or QuickScroll Down button. The active application window will scroll in the desired direction (if possible).
<u>When is it available:</u>	This feature is available for the Digital Mouse and the 16-button Mouse.

QuickScroll Drag Feature

<u>Definition:</u>	This feature allows the user to implement scrolling much like the Eraser feature is used.
<u>How is it initiated:</u>	The feature is initiated by clicking and holding a button that the user has assigned to the QuickScroll Drag feature.
<u>How is it used:</u>	Click and hold down a button assigned as the QuickScroll Drag button. Then click the pen tip on the tablet and drag in any direction. The active application window will scroll in that direction (if possible).
<u>When is it available:</u>	This feature is available on the Digital Pen.

Taskbar Shortcut Icon

TabletWorks v6.0 introduces a shortcut icon.

The TabletWorks shortcut icon appears on the right side of the taskbar, next to the clock and other shortcut icons.

How to use the shortcut icon:

1. Double click on the shortcut icon and the TabletWorks Control Panel will be launched.
1. Right click on the shortcut icon and a Pop-up menu will appear with the following options:

Pointing Mode- The user can set the pointing mode of the current pointing device (WYPIWYG or Mouse) in a sub-menu.

Mapping Mode The user can set Mapping to On or Off in a sub-menu.

Properties The user can launch the TabletWorks Control Panel.

Help The user can launch the TabletWorks Control Panel Help system.

Macros on the pointing device buttons

Overview

With TabletWorks v6.0, users can now configure macros on the buttons of the pointing devices.

Each pointing device will track and store it's own macros.

The functionality of the macros is similar to that of the Pop-up HotKeys.

How To...

See the button assignment HELP topic below for your pointing device for more information on assigning, defining and using macros.

Macros for the Digital Pen

Macros for the Digital Mouse

Macros for the 16-button Mouse

Pointing-Device-Specific Pointing Mode

Each pointing device will now maintain it's own pointing mode and it will be automatically restored/enabled as you switch from one pointing device to another.

Example: A user with a pen and a mouse can configure the pointing mode of the Digital Mouse different from that of the Digital Pen, as well as different pointing modes for each of the other pointing devices.

When a pointing device is placed on the tablet, the configured pointing mode of that pointing device will be in use.

Additional Links

For more information about pointing modes, refer to:

[How To Change Pointing Modes](#)

Launch TabletWorks Control Panel Button Assignment

A new button assignment has been added that will launch the TabletWorks Control Panel when the button is pressed. This button assignment is available on all pointing devices.

Additional Links

For more information about button assignments, refer to:

[How to customize button assignments for the Digital Pen](#)

[How to customize button assignments for the Digital Mouse](#)

[How to customize button assignments for the 16-button Mouse](#)

Digital Pen

The versatile Digital Pen pointing device is available on all tablets.

If the Digital Pen is a pressure pen, the added functionality of pressure adjustments are applicable to the pointing device.

To access the settings for the Digital Pen, click on the Digital Pen icon on the TabletWorks Control Panel and the Digital Pen window will be displayed.

The Digital Pen window has two tabs:

Buttons

Pressure

Use the Buttons tab (and its window) to customize button assignments for the pen.

Use the Pressure tab (and its window) to customize pressure settings for the pen.

Note: Instructional text is shown in **blue characters** on the windows,

Note: The button assignment window displays a What is WPIWYG informational button.

Following are related links:

What is WYPIWYG?

How to customize button assignments for the Digital Pen

How to adjust pen tip sensitivity

How to define a pressure range for the pen

Pressure Overview

What Is WYPIWYG?

The topic of this discussion is pointing modes.

CalComp provides two types of pointing modes:

WYPIWG mode (absolute on-screen tracking)

Mouse mode (relative on-screen tracking)

WYPIWYG Mode

The WYPIWYG (Where You Point Is Where You Go) pointing mode is a:

Precision, absolute pointing mode, that maintains a direct relationship between the tablet and the screen.

In this mode, the tablet is "mapped" to the monitor screen. As a result, hand movement on the tablet is minimized to improve productivity and precision.

For example:

If the pointing device is lifted and placed in the upper right corner of the tablet, the screen pointer moves to the upper right corner of the screen.

If the pointing device is lifted and placed in the upper left corner of the tablet, the screen pointer moves to the upper left corner of the screen.

If you are accustomed to dragging the pointing device (like a mouse), you can still go to the position you desire but without having to "row" as with a common mechanical mouse.

Mouse Mode

The movement in the Mouse pointing mode most closely approximates the movement of a mechanical mouse. The Mouse pointing mode is not "mapped" to the monitor screen. On-screen tracking is relative, not absolute.

For example:

If a pointing device is lifted and placed at a different location on the tablet, the screen pointer stays in its current location on the screen.

The screen pointer only moves in a certain direction when the tablet pointing device is on the tablet and is moved in that direction.

In addition, the distance that the screen pointer moves on the screen is not directly related to the distance that the pointing device moves on the tablet.

Tips on using the pointing modes

Use the WYPIWYG mode for precise control or tracing.

Use the Mouse mode for typical mouse-like control.

Make mode selection more accessible by assigning one of the pointing device buttons to toggle between WYPIWYG (absolute) mode and Mouse (relative) mode.

Use the Taskbar Shortcut Icon to change pointing modes.

Note: Certain programs, such as graphics applications, automatically change the pointing mode into WYPIWYG even though the pointing mode has been set to Mouse mode. If this is not desired, disable the Allow Application Override checkbox for the desired pointing device.

Note that some applications require WYPIWYG mode for the tablet to operate properly, and that the Allow Application Override checkbox is not available for the Digital Mouse.

How to change the pointing mode

There are two pointing modes available for the each pointing device:

Mouse (relative) mode

WYPIWYG (absolute) mode

The default for each pointing device are as follows:

Digital Pen	-	<u>WYPIWYG</u>
Digital Mouse	-	Mouse
16-button Mouse	-	<u>WYPIWYG</u>

To change modes for a pointing device, click on one of the mode buttons found in the lower left of the appropriate Buttons window.

A button on the pointing device can also be assigned to toggle between the two modes. This is highly recommended.

The pointing mode for the pointing device currently in use can also be changed quickly using the Taskbar Shortcut Icon.

Additional Links

For more information about pointing modes, refer to:

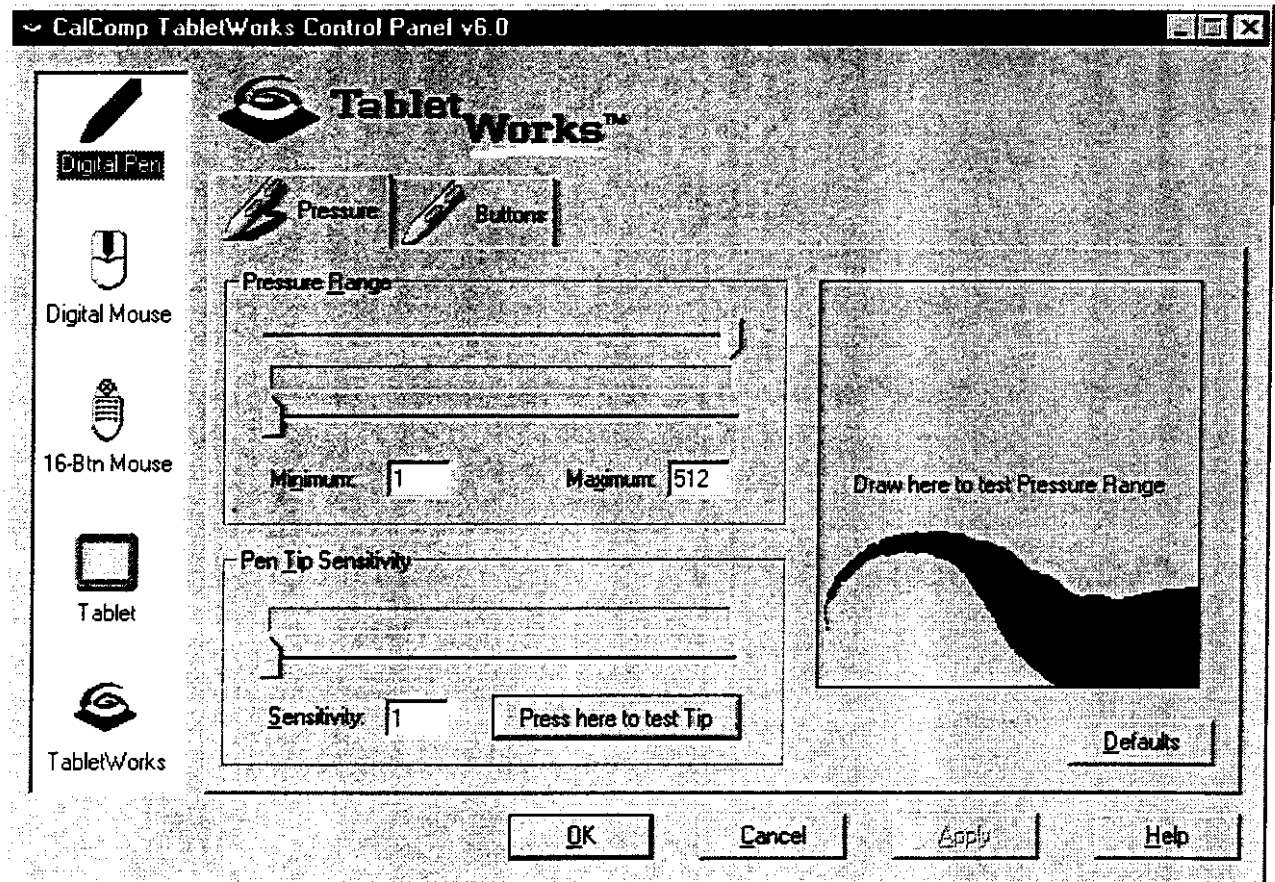
[What Is WYPIWYG](#)

Pressure Overview

The topic of this discussion is the pressure feature on the Digital Pen.

Elements such as line width and color intensity will vary depending on the pressure settings that are defined and the pressure level that is exerted.

The window shown below will be displayed when the Pressure tab on the Digital Pen window is selected.



Use the Pressure window to adjust the following pressure settings:

- Minimum pressure range
- Maximum pressure range
- Pen tip sensitivity setting

Additional Links

For additional 'How To' information, see:

[How to adjust pen tip sensitivity](#)

[How to define a pressure range for the pen](#)

How to customize button assignments for the Digital Pen

Button assignments

You can set up different button assignments on the Digital Pen using the Buttons feature in the TabletWorks Control Panel.

Adjusting the button assignments allows you to customize the pointing device to your work habits and to your application.

See [Button assignment descriptions](#) below for a list of possible assignments.

See [Suggested assignments](#) below for suggestions on using some assignments.

See [Macros](#) below for a description of how to assign a button macro to a button.

Defaults

With TabletWorks, changing button assignments is a very easy task. In addition, the Defaults button will reset all assignments to factory settings whenever you want to clear the slate.

See [Default button assignments](#) below for a list of default assignments for the buttons on the Digital Pen.

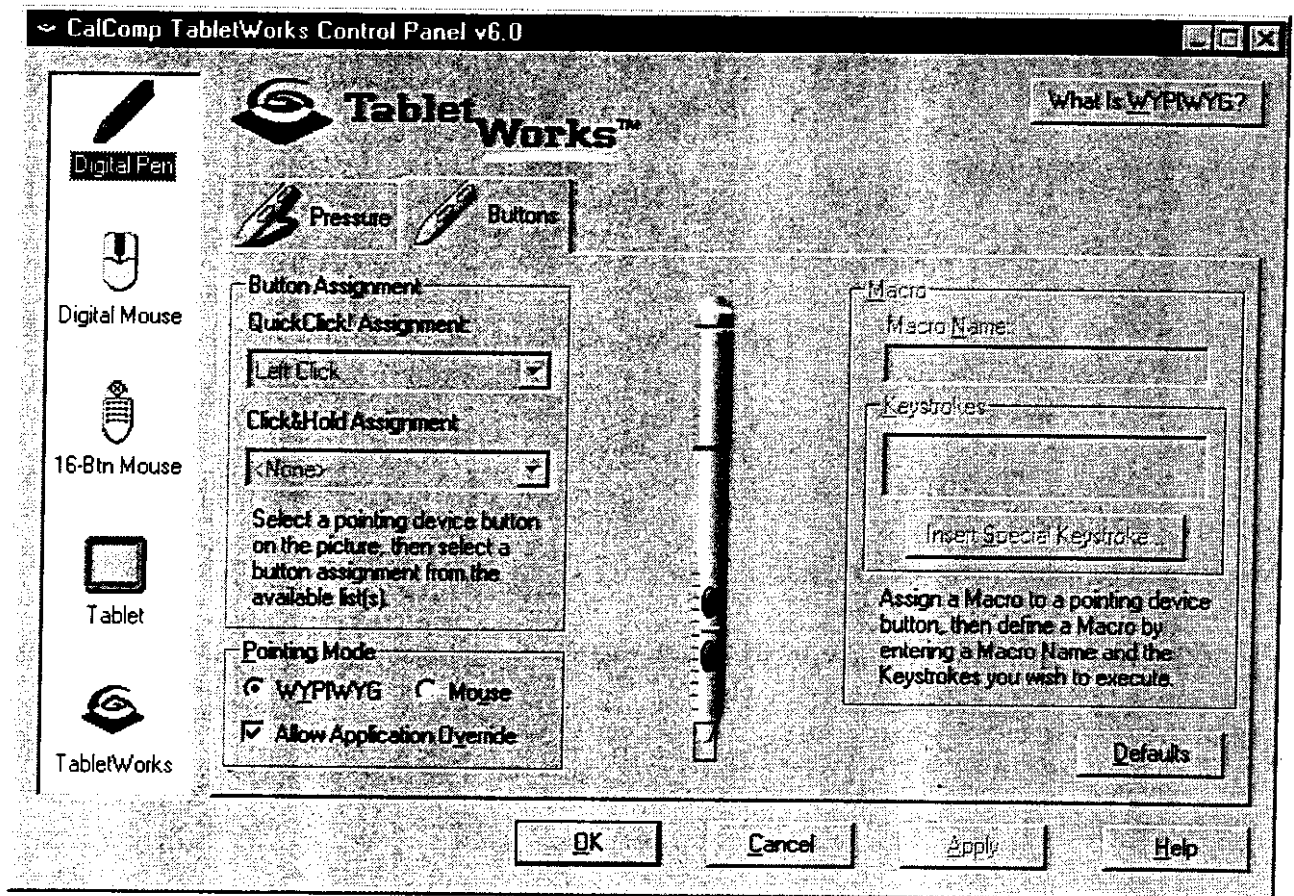
To change the assignment of a button

1 To change the assignment of a button, click on the Digital Pen icon in the TabletWorks Control Panel and the Digital Pen window will be displayed.

2 Click on the Buttons tab and the Buttons window for the Digital Pen will appear (see graphic below).

Note: Instructional text is shown in blue characters on the window.

Note: The button assignment window displays a [What Is WYPIWYG](#) informational button.



- 3 Select the button you wish to change on the picture of the pointing device.
As your mouse pointer moves over each selectable button area, a dashed red square will be drawn around the button. Stop the pointer over the button for which you want to change the assignments, and pick or select the desired button. A solid-red square will be drawn around the button (see graphic above). In the graphic above, the pen tip is selected.
- 4 Pull down the menus of available QuickClick and Click&Hold button assignments just to the left of the pointing device picture.
- 5 Select a new assignment from the menus of available button assignments.

Button assignment descriptions

Available QuickClick! Button Assignments:

<u>None</u>	No function.
<u>Macro</u>	Allows a Macro to be defined.
<u>HotKeys</u>	Clicking this button will cause the Pop-up HotKeys to appear.
<u>WYPIWYG Toggle</u>	Toggles the pointing mode for this pointing device.
<u>Open TabletWorks</u>	Launches the TabletWorks Control Panel
<u>Left/Right/Middle Click</u>	Left, right, middle mouse click
<u>Left/Right/Middle Double</u>	Left, right, middle double click

Left/Right/Middle Drag Left, right, middle 'click and hold'

Available Click&Hold Button Assignments:

<u>None</u>	No function.
<u>Eraser</u>	Allows the user to switch to the eraser tool (or alternate tool, according to the application's use of this feature) by holding down the button.
<u>QuickScroll Drag</u>	Allows the user to 'drag' on the tablet and scroll the application's window while holding down the button.

Additional features on the Buttons window

Pointing Mode

The Pointing Mode radio buttons on the Buttons window allow the user to select a pointing mode for the Digital Pen. The options are either **WYPIWYG** or Mouse.

In addition, the Allow Application option can be enabled or disabled. If the Allow Application Override option is enabled, a tablet-aware application may set the pointing mode to be different than the user-defined pointing mode while the application is running. If this option is disabled, the user-defined pointing mode will override any application control of the pointing mode.

Macros

Macros can be defined and then executed by clicking a button on the Digital Pen.

1. Assign 'Macro' (see Button Assignment Descriptions above) to a button on your pointing device.
1. Enter or modify the macro name using the Macro Name edit field. (See the graphic above.)
1. Enter or modify the keystrokes you want to be executed by this macro using the Keystrokes edit field.
1. Select the 'Insert Special Keystroke' button to display a Special Keystroke dialog box. Use this box to insert special, pre-defined keystrokes that you would not normally be able to type into the Keystrokes edit field. (Refer to the **HotKeys** section for information about the special keystroke dialog box.)
1. To save the defined Macro, click OK.
1. To execute the Macro, click on the assigned button.

Note: The Macro Name and Keystroke edit fields are available only when a macro assigned button is selected.

Default button assignments

CreationStation model 4x5

<u>Tip (not changeable):</u>	QuickClick!	Left Click
	Click&Hold	<None>
<u>Lower Button:</u>	QuickClick!	Double Click
	Click&Hold	QuickScroll Drag
<u>Upper Button:</u>	QuickClick!	HotKeys
	Click&Hold	Eraser

All other Station models

<u>Tip (not changeable):</u>	QuickClick!	Left Click
	Click&Hold	<None>
<u>Lower Button:</u>	QuickClick!	Right Click

<u>Upper Button:</u>	Click&Hold	QuickScroll Drag
	QuickClick!	HotKeys
	Click&Hold	Eraser

Suggested assignments

Following are explanations and suggestions of why or how the button assignments can be useful.

WYPIWYG Toggle

The pointing mode selection can be made more accessible by assigning one of the buttons to toggle between WYPIWYG (absolute) mode and Mouse (relative) mode.

Left/right/middle click

This function performs a single mouse click, just like using a mechanical mouse. On the Digital Pen, left click is permanently assigned to the pen tip.

Left/right/middle double

The double click function is useful on any pointing device, but it is especially useful on the Digital Pen. It is difficult to tap the pen tip in the same location in a rapid sequence. If you move the tip before the second tap, you may end up dragging an icon out of place or performing an action you did not want. You can make it easier by assigning a pen button to perform the double click action for you.

Left/right/middle drag

For easier dragging movements, assign one button to click and hold an item. Click the button a second time to release the hold.

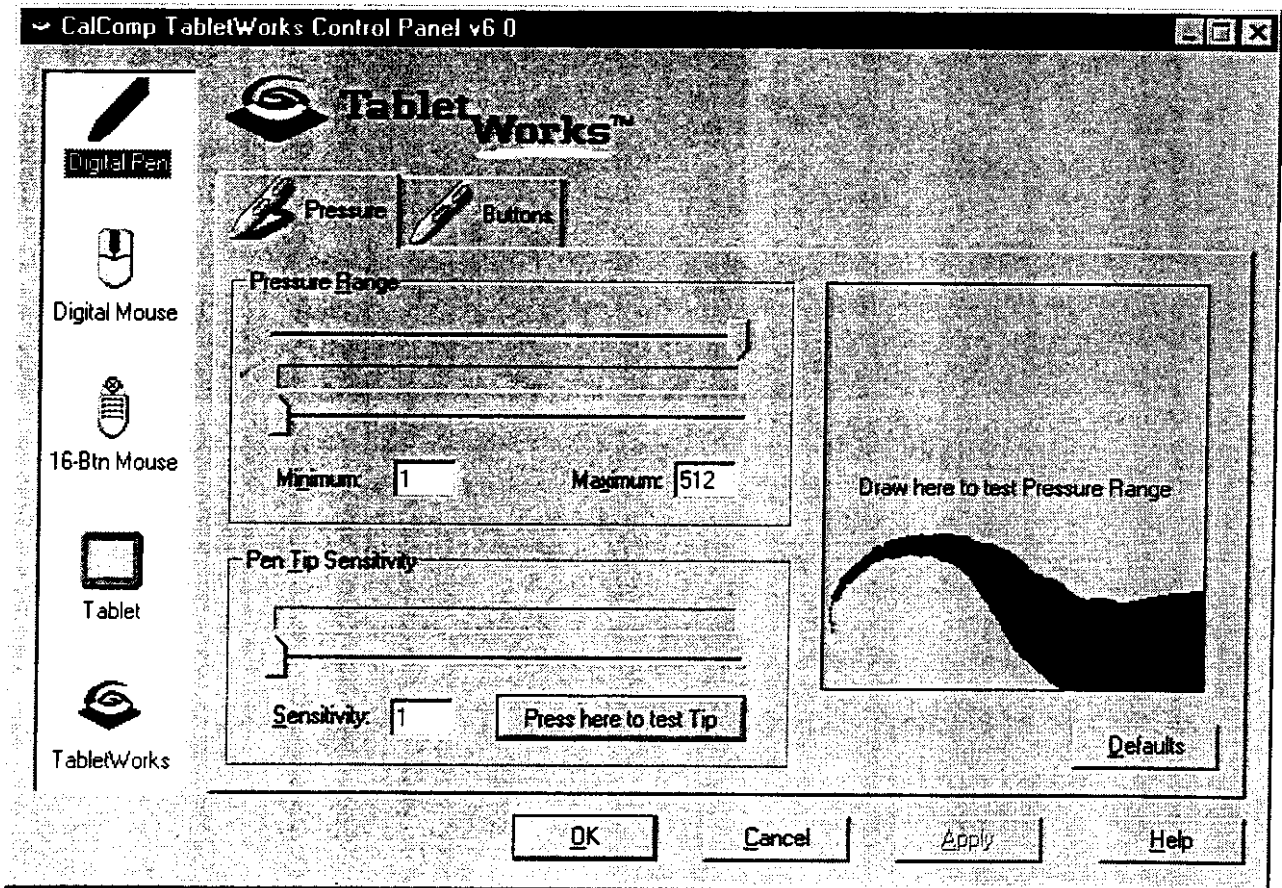
How to define a pressure range for the pen

You can define the range of pressure levels the pen will generate (output).

The pressure range controls the minimum and maximum width or saturation of the brush strokes within your drawing application.

To define a pressure range:

- 1 Click on the Pressure tab in the Digital Pen window. The window shown below will appear.



- 2 Adjust minimum pressure level by dragging the left slider in the Pressure Range area. The numerical value is reflected in the Minimum box.
- 3 Adjust maximum pressure level by dragging the right slider in the Pressure Range area. The numerical value is reflected in the Maximum box.

Note: For a more precise setting, enter the numerical values for the minimum and maximum levels in their respective boxes. The range of values depends on your tablet model.

Settings Requirements

There must be a minimum difference of 30 between the Minimum and Maximum settings. For example, if the maximum range is set to 511 then the largest minimum setting allowed is 481. If the minimum range is set to 0 then the smallest maximum setting allowed is 30.

The minimum range cannot be set below the pen Sensitivity setting.

There must be a minimum difference of 30 between the Minimum and Maximum pressure settings.

(See: [How to adjust pen tip sensitivity](#))

4 To test the defined pressure range, draw in the test area on the right side of the Pressure window as shown above.

You will see circles of varying sizes that correspond with the amount of pressure you apply to the tip.

The circle sizes should correspond with the pressure range shown by the colored bar that will appear between the two sliders as shown in the graphic above.

5 When you are satisfied with your selection, click on Apply to make the change and remain in TabletWorks Control Panel or click on OK to make the change and exit TabletWorks Control Panel.

Additional Links

For related 'How To' information, see:

[How to adjust pen tip sensitivity](#)

For related discussion material, see:

[Pressure Overview](#)

How to adjust pen tip sensitivity

You can adjust the tip sensitivity of the pressure pen to fit your natural writing or drawing style.

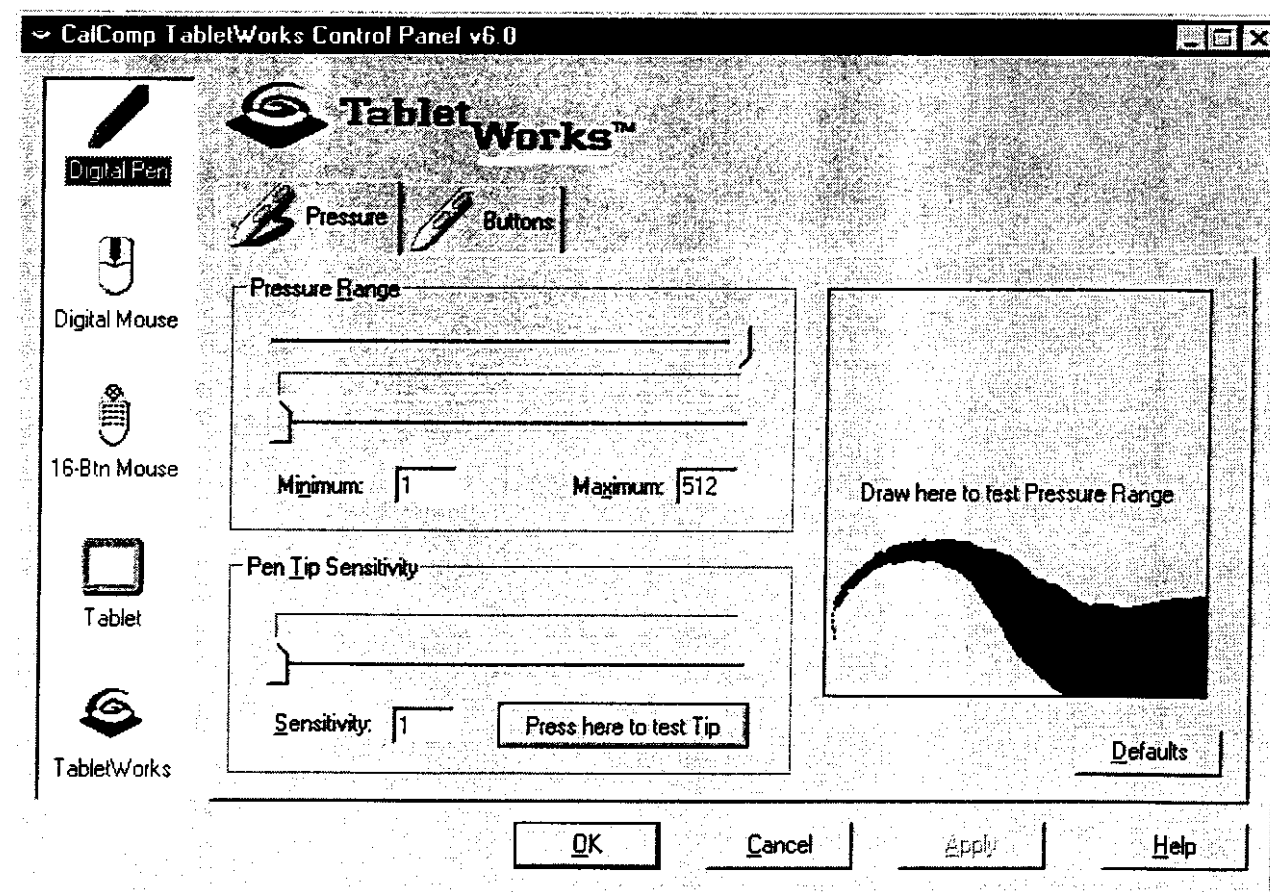
The tip sensitivity determines how hard you must press the pen tip before it engages or activates.

If you tend to press hard while writing, you will probably want to make the pen tip less sensitive (increase the setting).

If you tend to press lightly while writing, you will probably want to make the pen tip more sensitive (decrease the setting).

To adjust the tip sensitivity:

- 1 Click on the Pressure tab in the Digital Pen window. The Pressure window (shown below) will appear.



- 2 Click and hold the slider in the Pen Tip Sensitivity area, and move it to change the setting.

The numerical setting is reflected in the Sensitivity box.

If you require more precise settings, type a specific numerical value in the Sensitivity box.

The range of possible values depends on your tablet model.

Note: The Sensitivity setting can never be greater than the Minimum Pressure setting. (See: [How to define a pressure](#)

range for the pen)

3 Test the selection by clicking on the Tip Test button.

A colored bar, indicating pressure level, will appear above the slider.

Your pen tip engages when the bar reaches the position of the slider.

4 When you are satisfied with your selection, click on Apply to make the change and remain in the TabletWorks Control Panel or click on OK to make the change and exit the TabletWorks Control Panel.

Additional Links

For related 'How To' material, see:

[How to define a pressure range for the pen](#)

For related discussion material, see:

[Pressure Overview](#)

Digital Mouse

The versatile Digital Mouse pointing device is available on all tablets.

To access the settings for the Digital Mouse, click on the Digital Mouse icon on the TabletWorks Control Panel and the Digital Mouse window will be displayed.

The Digital Mouse window has the following tab:

Buttons

Use the Buttons tab (and its window) to customize button assignments for the mouse.

Note: Instructional text is shown in **blue characters** on the windows.

Note: The button assignment window displays a What is WPIWYG informational button.

Following are related links:

[What is WYPIWYG?](#)

[How to customize button assignments for the Digital Mouse](#)

How to customize button assignments for the Digital Mouse

Button assignments

You can set up different button assignments on the Digital Mouse using the Buttons feature in the TabletWorks Control Panel.

Adjusting the button assignments allows you to customize the pointing device to your work habits and to your application.

See [Button assignment descriptions](#) below for a list of possible assignments.

See [Suggested assignments](#) below for suggestions on using some assignments.

See [Macros](#) below for a description of how to assign a button macro to a button.

Defaults

With TabletWorks, changing button assignments is a very easy task. In addition, the Defaults button will reset all assignments to factory settings whenever you want to clear the slate.

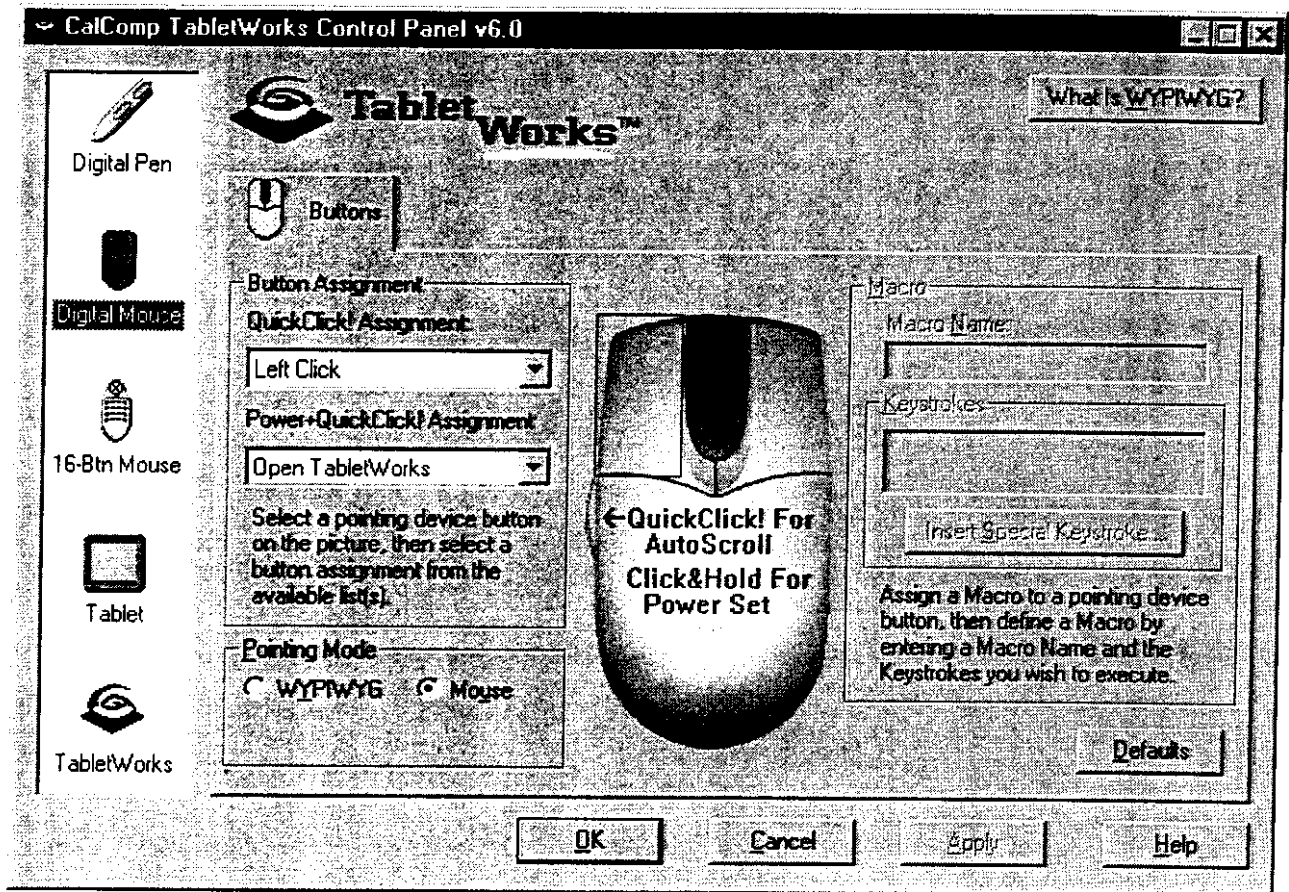
See [Default button assignments](#) below for a list of default assignments for the buttons on the Digital Mouse.

To change the assignment of a button

- 1 To change the assignment of a button, click on the Digital Mouse icon in the TabletWorks Control Panel and the Digital Mouse Buttons window will be displayed, as shown below.

Note: Instructional text is shown in **blue characters** on the window.

Note: The button assignment window displays a [What Is WYPIWYG](#) informational button.



2 Select the button you wish to change on the picture of the pointing device.

As your mouse pointer moves over each selectable button area, a dashed red square will be drawn around the button. Stop the pointer over the button for which you want to change the assignments, and pick or select the desired button. A solid-red square will be drawn around the button (see graphic above).

3 Select a new assignment from one of the lists to the left of the picture of the pointing device.

Note: The side switch is assigned to the AutoScroll function. It cannot be changed.

Button assignment descriptions

<u>None</u>	No function.
<u>Macro</u>	Allows a Macro to be defined for this button.
<u>HotKeys</u>	Single clicking this button will cause the Pop-up HotKeys to appear.
<u>Open TabletWorks</u>	Launches the TabletWorks Control Panel
<u>QuickScroll Up</u>	Causes the active applications window to scroll up, if possible.
<u>QuickScroll Down</u>	Causes the active applications window to scroll down, if possible.
<u>AutoScroll</u>	When clicked, the application will enter an Intellimouse-like pan scrolling mode.
<u>WYPIWYG Toggle</u>	Toggles the pointing mode for this pointing device.
<u>Left/Right/Middle Click</u>	Left, right, middle mouse click
<u>Left/Right/Middle Double</u>	Left, right, middle double click

Left/Right/Middle Drag Left, right, middle 'Click&Hold'

Additional features on the Buttons window

Pointing Mode

The Pointing Mode radio buttons on the Buttons window allow the user to select a pointing mode for the Digital Mouse. The options are either WYPIWYG or Mouse

Macros

Macros can be defined and then executed by clicking a button on the Digital Mouse.

1. Assign 'Macro' (see Button Assignment Descriptions above) to a button on your pointing device.
2. Enter or modify the macro name using the Macro Name edit field. (See the graphic above.)
3. Enter or modify the keystrokes you want to be executed by this macro using the Keystrokes edit field.
4. Select the 'Insert Special Keystroke' button to display a Special Keystroke dialog box. Use this box to insert special, pre-defined keystrokes that you would not normally be able to type into the Keystrokes edit field. (Refer to the HotKeys section for information about the special keystroke dialog box.)
5. To save the defined Macro, click OK.
6. To execute the Macro, click on the assigned button.

Note: The Macro Name and Keystroke edit fields are available only when a macro assigned button is selected.

Default button assignments

<u>Left Button:</u>	QuickClick!	Left Click
	Power+QuickClick!	Open TabletWorks
<u>Right Button:</u>	QuickClick!	Right Click
	Power+QuickClick!	HotKeys
<u>Middle Buttons:</u>	QuickClick!	QuickScroll Up & QuickScroll Down
	Power+QuickClick!	<None>
<u>Side Button:</u>	QuickClick!	AutoScroll
	Power+QuickClick!	<N/A>

Suggested assignments

Following are explanations of why or how the button assignments can be useful.

WYPIWYG Toggle

The pointing mode selection can be made more accessible by assigning one of the buttons to toggle between WYPIWYG (absolute) mode and Mouse (relative) mode.

Left/right/middle click

This function performs a single mouse click, just like using a mechanical mouse. It does not matter which button you assign to be the Left Click as long as you have at least one assigned.

Left/right/middle double

The double click function is useful on any pointing device. It is difficult to tap in the same location in a rapid sequence. Move the

pointer before the second tap and you may end up dragging an icon out of place or performing an action you did not want. You can make it easier by assigning a button to perform the double click action for you.

Left/right/middle drag

For easier dragging movements, assign one button to click and hold an item. Click the button a second time to release the hold.

16-button Mouse

The versatile 16-button Mouse pointing device is available on all tablets except the Creation Station.

To access the settings for the 16-button Mouse, click on the 16-button Mouse icon on the TabletWorks Control Panel and the 16-button Mouse window will be displayed.

The 16-button Mouse window has the following tab:

Buttons

Use the Buttons tab (and its window) to customize button assignments for the 16-button mouse.

Note: Instructional text is shown in **blue characters** on the windows,

Note: The button assignment window displays a What is WPIWYG informational button.

Following are related links:

[What is WYPIWYG?](#)

[How to customize button assignments for the 16-button Mouse](#)

How to customize button assignments for the 16-button Mouse

Button assignments

You can set up different button assignments on the 16-button Mouse using the Buttons feature in the TabletWorks Control Panel. Adjusting the button assignments allows you to customize the pointing device to your work habits and to your application.

See [Button assignment descriptions](#) below for a list of possible assignments.

See [Suggested assignments](#) below for suggestions on using some assignments.

See [Macros](#) below for a description of how to assign a macro to a button.

Defaults

With TabletWorks, changing button assignments is a very easy task. In addition, the Defaults button will reset all assignments to factory settings whenever you want to clear the slate.

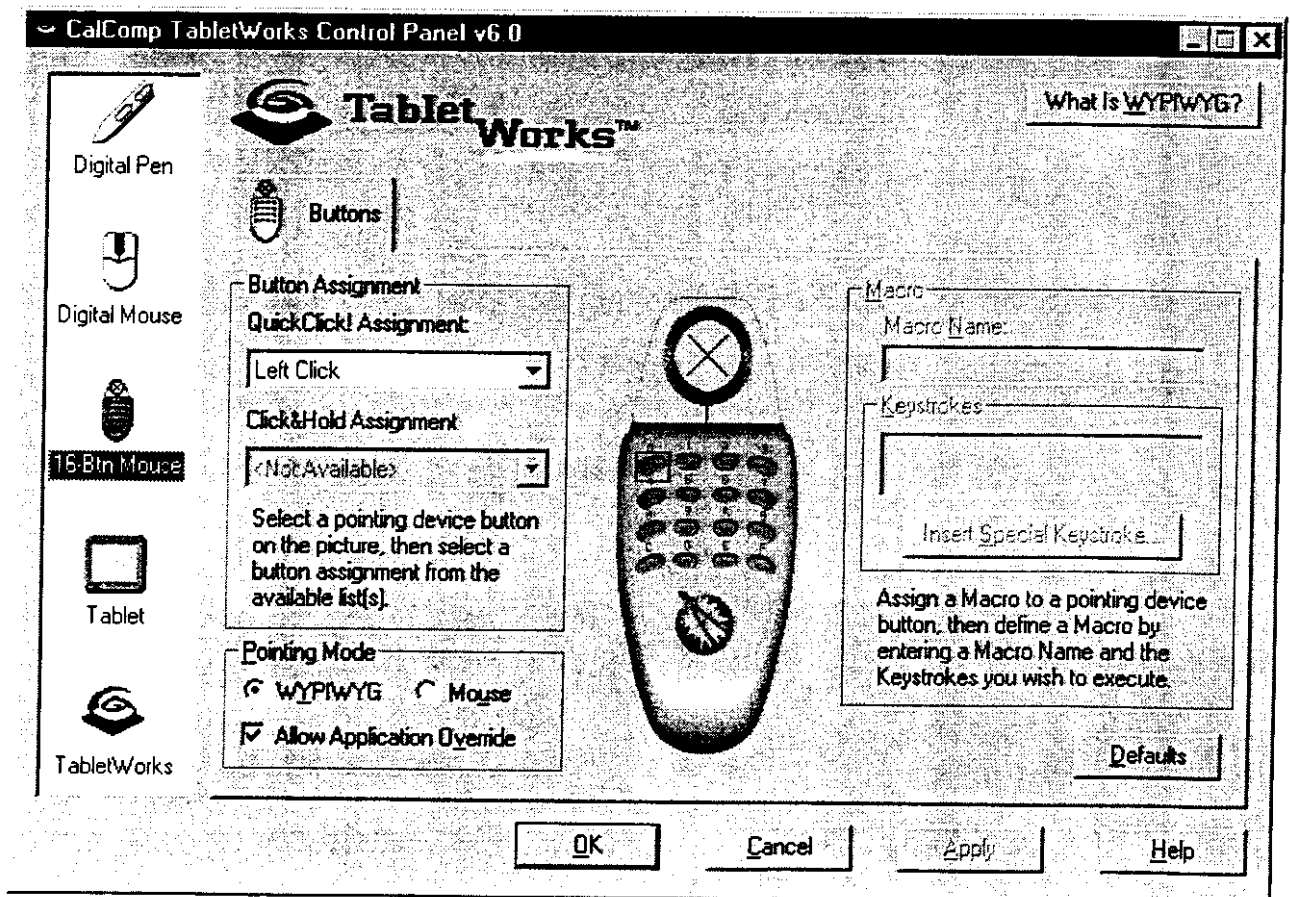
See [Default button assignments](#) below for a list of default assignments for the buttons on the 16-button Mouse.

To change the assignment of a button

- 1 To change the assignment of a button, click on the 16-button Mouse icon in the TabletWorks Control Panel and the Buttons window will be displayed, as shown below.

Note: Instructional text is shown in blue characters on the window.

Note: The button assignment window displays a [What Is WYPIWYG](#) informational button.



2 Select the button you wish to change on the picture of the pointing device.

As your mouse pointer moves over each selectable button area, a dashed red square will be drawn around the button. Stop the pointer over the button for which you want to change the assignments, and pick or select the desired button. A solid-red square will be drawn around the button (see graphic above).

3 Select a new assignment from the QuickClick Button Assignment drop list.

Note: The Click&Hold Button Assignments are not available for this pointing device.

Button assignment descriptions

<u>None</u>	No function.
<u>Macro</u>	Allows a Macro to be defined.
<u>HotKeys</u>	Single clicking this button will cause the Pop-up HotKeys list to appear.
<u>Open TabletWorks</u>	Launches the TabletWorks Control Panel
<u>QuickScroll Up</u>	Causes the active applications window to scroll up.
<u>QuickScroll Down</u>	Causes the active applications window to scroll down.
<u>AutoScroll</u>	When clicked, the application will enter an Intellimouse-like pan scrolling mode.
<u>WYPIWYG Toggle</u>	Toggles the pointing mode for this pointing device.
<u>Left/Right/Middle Click</u>	Left, right, middle mouse click
<u>Left/Right/Middle Double</u>	Left, right, middle double click
<u>Left/Right/Middle Drag</u>	Left, right, middle 'Click&Hold'

Additional features on the Buttons window

Pointing Mode

The Pointing Mode radio buttons on the Buttons window allow the user to select a pointing mode for the 16-button Mouse. The options are either WYPIWYG or Mouse.

In addition, the Allow Application option can be enabled or disabled. If the Allow Application Override option is enabled, a tablet-aware application may set the pointing mode to be different than the user-defined pointing mode while the application is running. If this option is disabled, the user-defined pointing mode will override any application control of the pointing mode.

Macros

Macros can be defined and then executed by clicking a button on the 16-button Mouse.

1. Assign 'Macro' (see Button Assignment Descriptions above) to a button on your pointing device.
2. Enter or modify the macro name using the Macro Name edit field. (See the graphic above.)
3. Enter or modify the keystrokes you want to be executed by this macro using the Keystrokes edit field.
4. Select the 'Insert Special Keystroke' button to display a Special Keystroke dialog box. Use this box to insert special, pre-defined keystrokes that you would not normally be able to type into the Keystrokes edit field. (Refer to the HotKeys section for information about the special keystroke dialog box.)
5. To save the defined Macro, click OK.
6. To execute the Macro, click on the assigned button.

Note: The Macro Name and Keystroke edit fields are available only when a macro assigned button is selected.

Default button assignments

<u>Button 0:</u>	QuickClick!	Left Click
	Click&Hold	<N/A>
<u>Button 1:</u>	QuickClick!	Right Click
	Click&Hold	<N/A>
<u>All Other Buttons:</u>	QuickClick!	<None>
	Click&Hold	<N/A>

Suggested assignments

Following are explanations of why or how the button assignments can be useful.

WYPIWYG Toggle

The pointing mode selection can be made more accessible by assigning one of the buttons to toggle between WYPIWYG (absolute) mode and Mouse (relative) mode.

Left/right/middle click

This function performs a single mouse click, just like using a mechanical mouse. It does not matter which button you assign to be the Left Click as long as you have at least one assigned.

Left/right/middle double

The double click function is useful on any pointing device. It is difficult to tap in the same location in a rapid sequence. Move the pointer before the second tap and you may end up dragging an icon out of place or performing an action you did not want. You can make it easier by assigning a button to perform the double click action for you.

Left/right/middle drag

For easier dragging movements, assign one button to click and hold an item. Click the button a second time to release the hold.

Mapping Overview

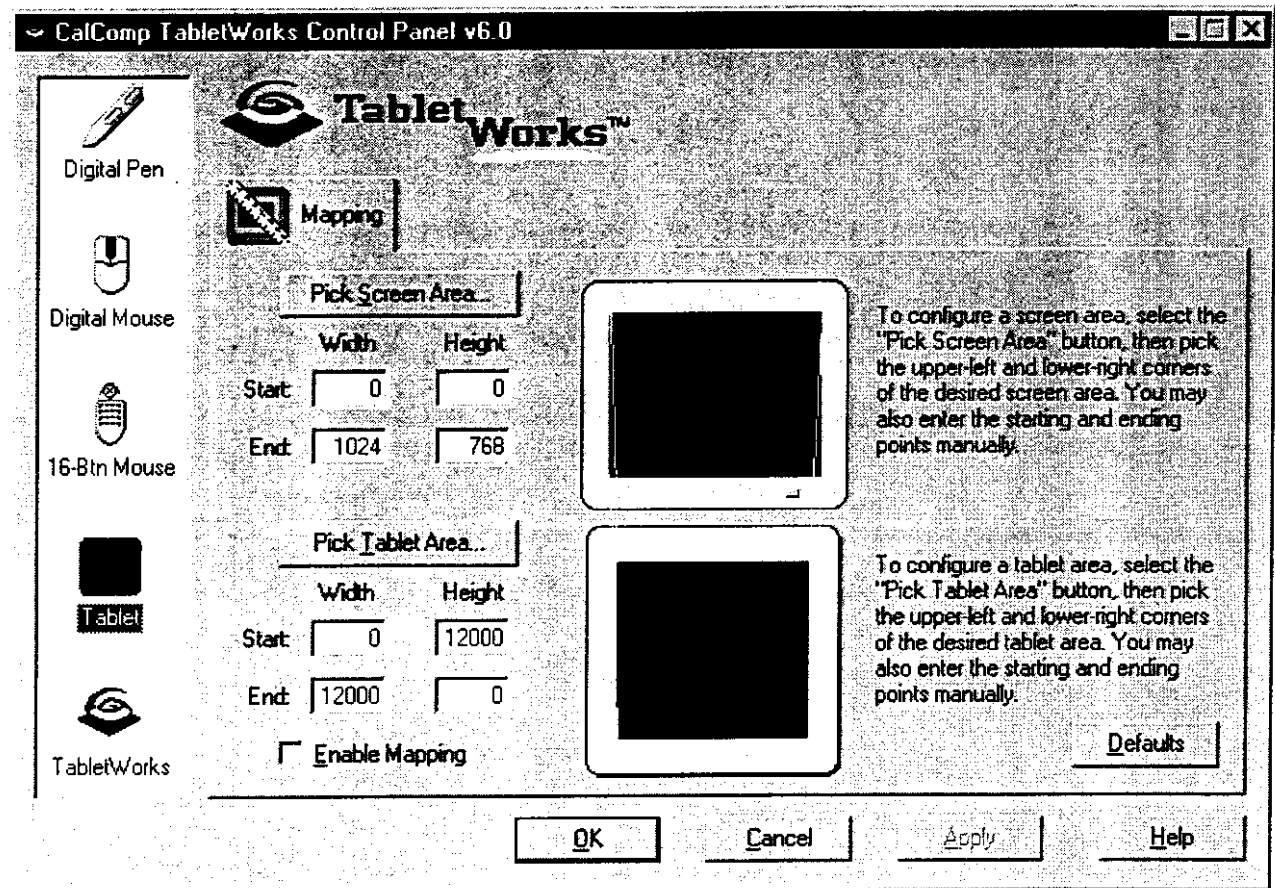
The topic of this discussion is tablet and screen mapping.

The tablet area and the screen area can be mapped to fit your application or your work needs.

The Tablet icon and the Mapping window

The Tablet icon on the Control Panel enables the user to configure the size of the screen and tablet areas.

The Mapping window shown below will be displayed when the Tablet icon in the TabletWorks Control Panel is selected.



Mapping functions

The Mapping window functions are accessed as follows:

The Pick Screen Area button is used to configure the size of the screen area.

The Pick Tablet Area button is used to configure the size of the tablet area.

The ESC key on the keyboard can be used at any time to cancel selecting an area.

Mapping aids

When the TabletWorks Control Panel is selecting a screen or tablet area, the pointer on the screen changes to indicate what is expected next.

For informational purposes, the screen and tablet areas' coordinates are displayed next to the respective areas. This allows the precise configuration of a screen or tablet area size.

When changing the Screen Area, a warning will be displayed about making the Screen Area too small. This warning refers to users who do not have an additional mouse, and the tablet is the only pointing device in use in Windows.

The Enable Mapping checkbox

When a screen or tablet area is being selected, the recommended procedure is that you do not select the Enable Mapping checkbox until you are satisfied with the Screen and Tablet areas that you have defined. If the Enable Mapping checkbox is disabled, the defined mapping areas will not be placed into effect. This allows you to change the mapping areas multiple times until you are satisfied with them, and only then place them into effect.

Mapping and Pointing Modes

When the tablet pointing mode is set to WYPIWYG mode, which is the required for mapping to be applied, and the Screen Area size is reduced, any screen locations outside of the selected Screen Area size will not be accessible.

When the tablet mode is set to Mouse mode, the mapping is ignored and all screen areas will be accessible.

It is recommended that a WYPIWYG Toggle button assignment be used if the Screen Area size is reduced. This will enable switching back and forth easily from the entire screen area, which is accessible in Mouse mode, to the selected Screen Area, which is accessible in WYPIWYG mode.

Defaults

Selecting the Default button will load the default values for the mapping settings.

Additional Links

For additional information, see:

[How to map the tablet and screen](#)

[WYPIWYG](#)

How to map the tablet and screen

The Mapping feature allows you to change the relationship between the tablet and the monitor screen.

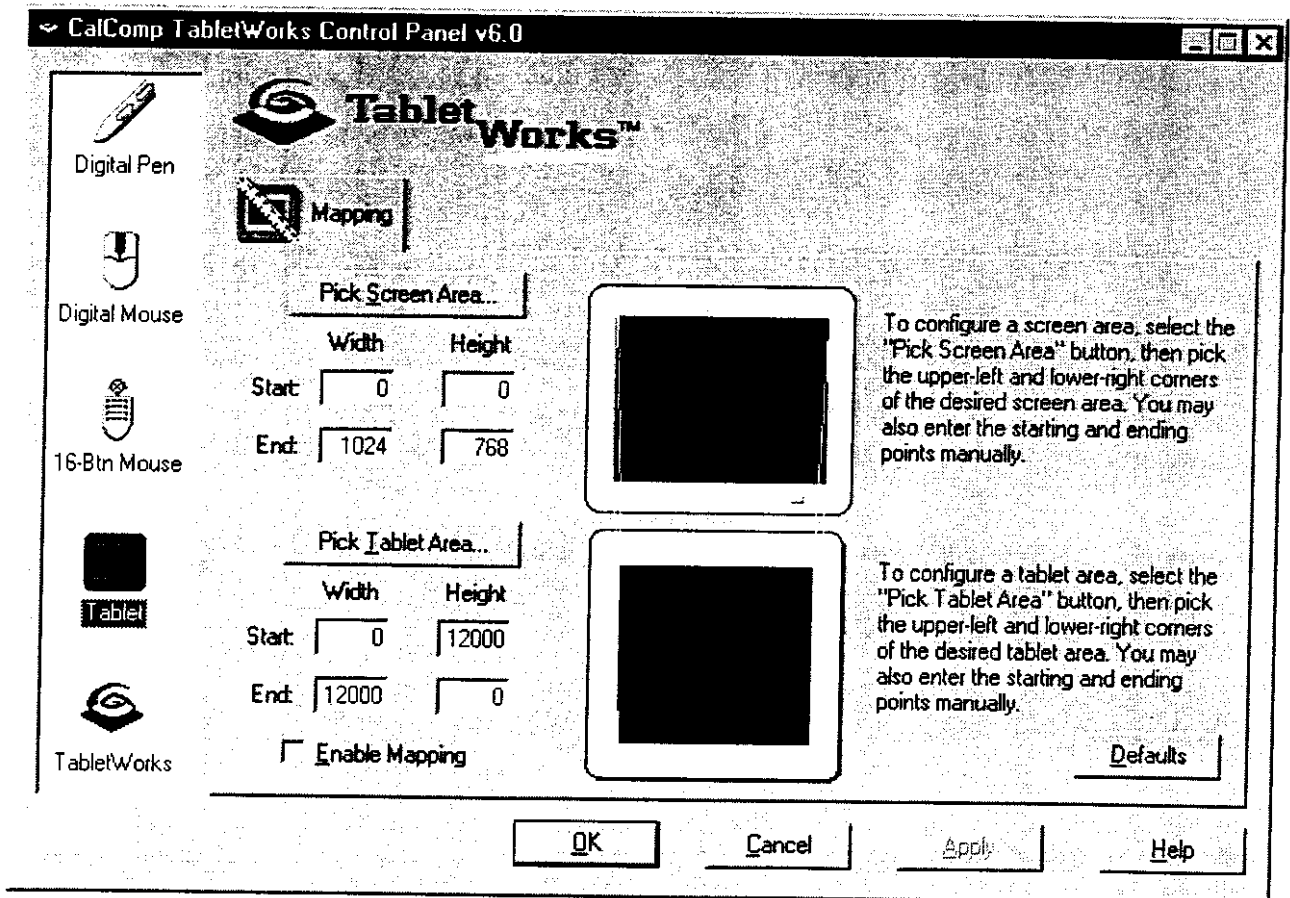
For example, you may have a picture that is smaller than the drawing area of the tablet and you want to trace it to fit proportionally within the application window's work area. To make the task easier, you can map the tablet's drawing area to the size of the picture and map the screen to include only the work area of the application window. If you need to access the full screen at any time, you can temporarily turn off your map and return to it at a future time.

Note: When you change mapping you are changing the tablet's behavior on the screen and in applications.

For additional background information on mapping, see [Mapping Overview](#).

To change the mapping of the tablet or screen:

- 1 Click on the Tablet icon in the TabletWorks Control Panel. The window shown below will appear.



- 2 Click on the Pick Screen Area button to set up a screen map. The screen cursor changes to an upper left corner shape. Click on the upper left corner of the area on the monitor screen you wish to map.
- 3 The screen pointer changes to a lower right corner shape. Click on the lower right corner of the area on the monitor screen you wish to map. The chosen area should appear within the screen icon in the Mapping window.

4 Click on the button to set up a tablet map.

Follow the cursor on the picture of the tablet area. First pick the upper left corner of the desired tablet area, then pick the lower right corner of the desired tablet area, as indicated by the graphical prompts. The chosen area should appear within the tablet figure in the Mapping window as shown above.

5 Check the "Enable Mapping" checkbox to activate your map.

To temporarily turn off a saved map, click on the Enable Mapping checkbox to remove the X.

When you want to reuse the map, recheck the Enable Mapping checkbox.

6 Save the map.

Click on Apply to save the map and remain in TabletWorks Control Panel.

Click on OK to save the map and exit TabletWorks Control Panel.

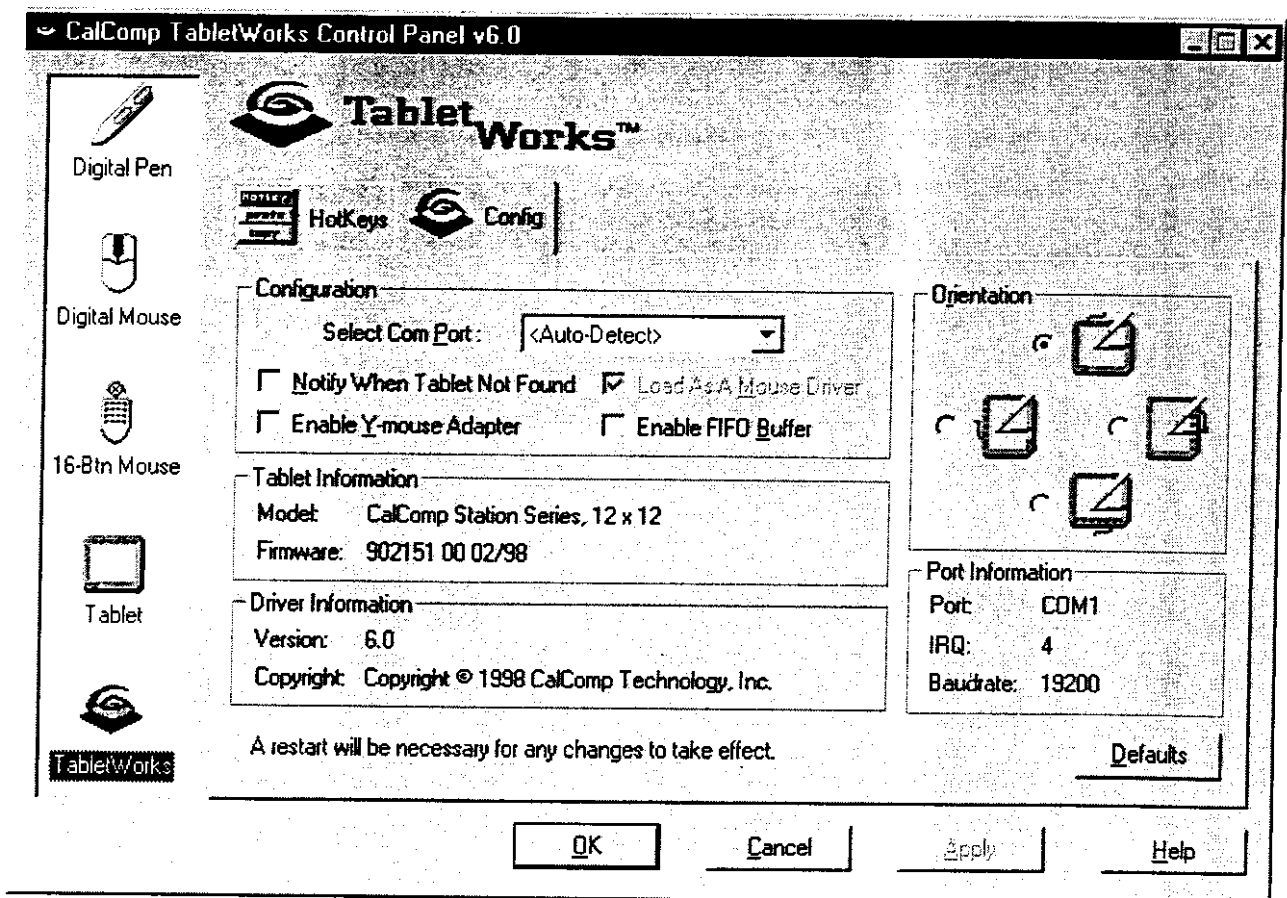
How to rotate the tablet

If you want to physically rotate the tablet, you can change the Orientation setting in the TabletWorks Control Panel, as described below.

Note: If the Orientation in the TabletWorks Control Panel and the physical rotation of the tablet are not the same, the pointing device movements will not correspond to the screen pointer movements.

To rotate the tablet:

- 1 Click on the TabletWorks icon in the TabletWorks Control Panel. The TabletWorks window will be displayed.
- 2 Click on the Config tab on the TabletWorks window and the Config window shown below will appear.



- 3 Select the direction you wish to rotate your tablet from the Orientation area of the window.

- 4 To make the change:

Click on Apply to make the change and remain in TabletWorks Control Panel.

Click on OK to make the change and exit TabletWorks Control Panel.

Note: The new Orientation setting will be enabled when the system has been restarted.

5 Physically rotate the tablet to match your orientation setting once the system has been restarted.

Additional Links

For related information, see:

[Configuration](#)

Pop-up HotKeys

HotKeys contain keystrokes that allow the execution of frequently used actions.

You can configure and reconfigure HotKeys to meet your needs.

Your objective in using HotKeys would usually be that they make your work more productive and make your tablet more in tune with your application program.

TabletWorks HotKeys are called Pop-up HotKeys because, with the click of a button on your pointing device, a menu of defined HotKeys will pop up on the screen next to your pointing device. Pop-up HotKeys are executed from the Pop-up menu.

Conveniently, the pointing device does not have to be moved very far to 'pick' a HotKey to be executed.

These basics are useful to know about TabletWorks Pop-up HotKeys:

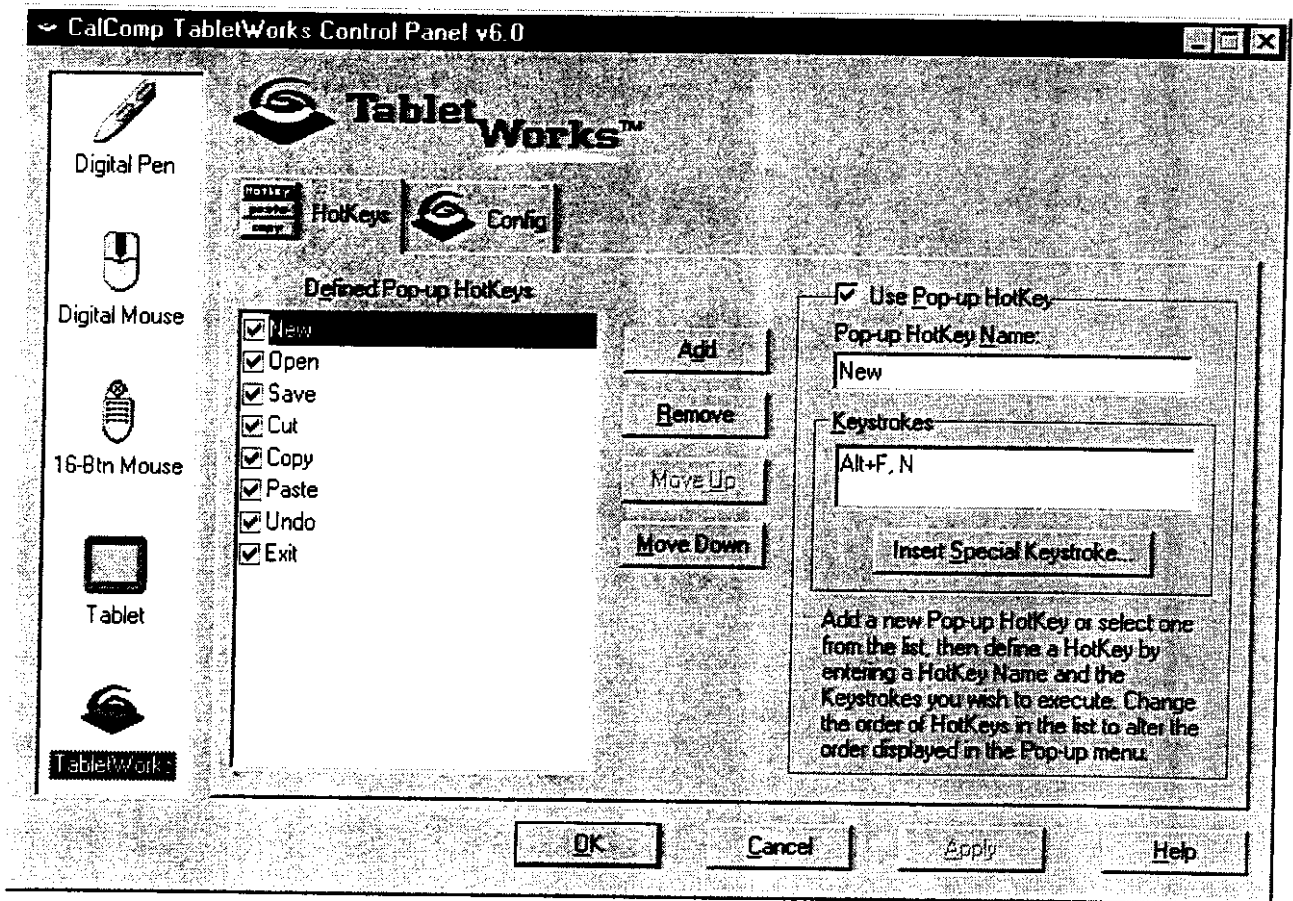
- The HotKeys window provides a screen list of the defined HotKeys.

- HotKeys are defined, modified, enabled, disabled, and removed using the HotKeys window on the TabletWorks Control Panel.

- HotKeys are executed from the Pop-up HotKeys menu.

- There is no hard limit to the number of Pop-up HotKeys you can configure. The total is subject to the size of the buffer and the number of keystrokes in each HotKey.

The following window will be displayed when the HotKeys tab on the TabletWorks window is selected.



HotKeys window actions

The following actions can be performed using the HotKeys window:

Add a Pop-up HotKey

Remove a Pop-up HotKey

Enable or Disable a Defined Pop-up HotKey

Additional Links

For complete 'How To' information, see:

[How to work with HotKeys](#)

How to work with Pop-up HotKeys

HotKeys allow you to execute frequently used actions easily in one step. The result is functional convenience and increased productivity.

1 Create HotKeys

Use the HotKeys window to create HotKeys by programming the shortcut keystrokes you use most often. For example:

You might want to set up HotKeys for global functions such as Save (Ctrl-S) and Undo (Ctrl-Z).

You might want to set up HotKeys for application-specific functions such as selecting a tool or changing states within the application.

2 Use the list (menu) of defined HotKeys.

With a click of a button on your pointing device, a menu of defined HotKeys will pop up on your computer screen next to the screen pointer (hence the name Pop-up HotKeys).

Just click on the function you need and the programmed keystrokes will be executed. You do not have to reach for the keyboard or move your pointing device away from your tablet activity area.

Instructions on how to accomplish these tasks are detailed in the topics below.

Topics In This Section

[Using a Pop-up HotKey](#)

[Setting up a Pop-up HotKey](#)

[Enabling or disabling a Pop-up HotKey](#)

[Removing a Pop-up HotKey](#)

[Changing the order of a HotKey in the Pop-up HotKey menu](#)

Using a Pop-up HotKey

- 1 Click on the pointing device button that is assigned to HotKeys. If the pointing device is a pen, allow the pen tip to hover just above the tablet surface.

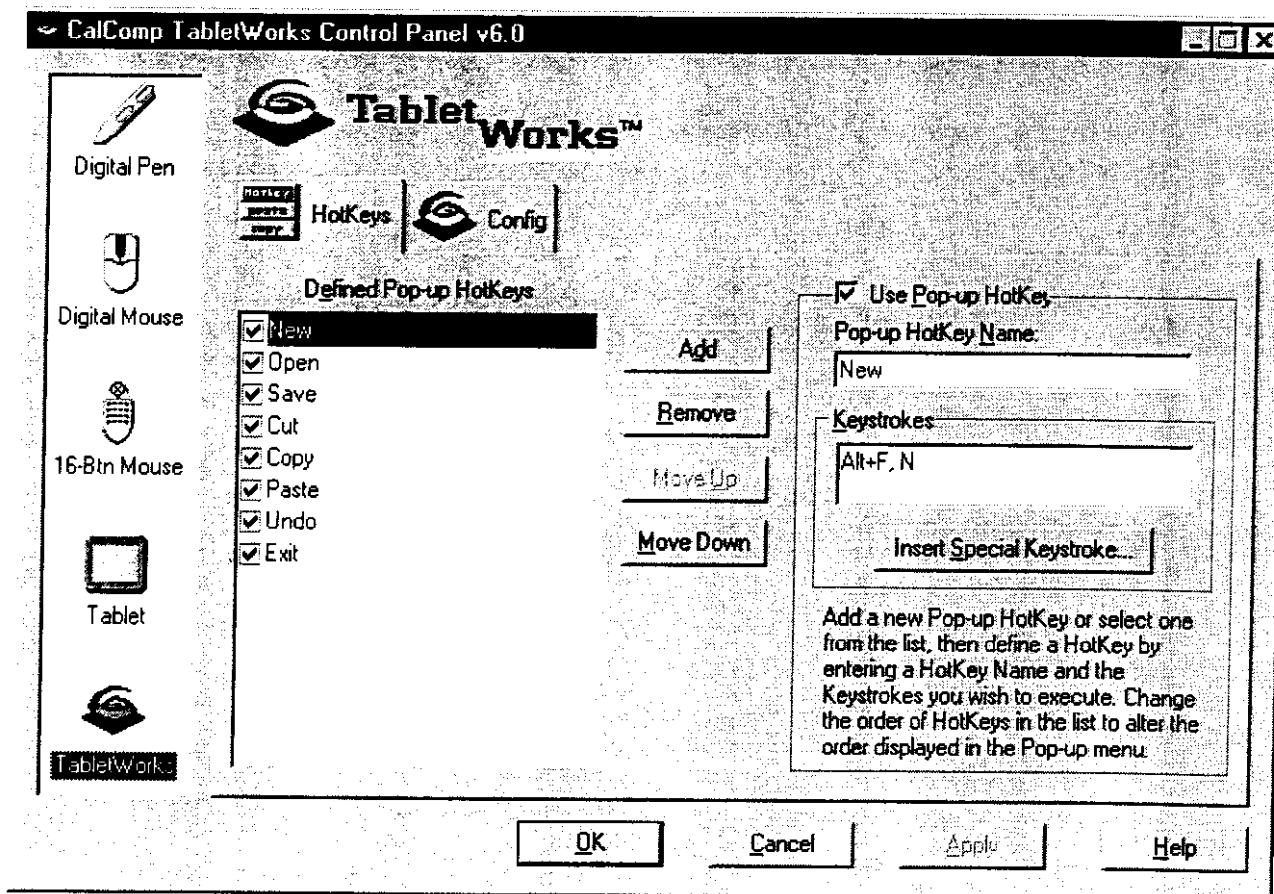
Note: Some pointing devices have a default button for HotKeys. If you have reassigned your pointing device button functions, click on the button you have assigned for Pop-up HotKeys.

- 2 A Pop-up menu will appear next to where your screen pointer is located.

- 3 Click on the HotKey you wish to use. The programmed keystrokes will be performed.
-

Setting up a Pop-up HotKey

- 1 Click on the HotKeys tab in the TabletWorks window.
The window shown below will appear.



- 2 Click on the Add button.
A checkbox with an empty label will appear in the Defined Pop-up HotKeys list.
A checkmark will appear in the Use Pop-up HotKey checkbox.
- 3 Type the name of the HotKey in the Pop-up HotKey Name text box.
The name will appear in the Defined Pop-up HotKeys list next to the checkbox.
The name will also appear in the Pop-up HotKey menu.
- 4 Type the desired keystrokes for the HotKey in the Command Keys box. For example, for the Save command, type Ctrl then S.
You can also type multiple keystrokes for a HotKey in order to execute more complicated commands.
- 5 Some keystrokes cannot be entered directly because they have special meaning in the operating system. To insert one of these keystrokes, click on the Insert Special Keystroke button. The dialog box shown below will appear.

Insert Special Keystroke

Keys

☒ Up ☐ Page Up ☐ Backspace
☐ Down ☐ Page Down ☐ Esc
☐ Left ☐ Home ☐ Tab
☐ Right ☐ End ☐ F1
☐ Enter ☐ Delete

Modifiers

☐ Alt ☐ Shift
☐ Ctrl ☐ Extended

Insert
Cancel

6 Select the keystrokes you wish to use then click on Insert.

7 To add another Pop-up HotKey, click on the Add button and repeat the procedure, beginning with Step 2 above.

8 When you are finished adding Pop-up HotKeys, click on the Apply button to make the change and remain in the TabletWorks Control Panel or click on the OK button to make the change and exit the TabletWorks Control Panel.

Enabling or disabling a Pop-up HotKey

HotKeys can be enabled or disabled.

A disabled HotKey will not be displayed on the Pop-up HotKey menu.

An enabled HotKey will be displayed on the Pop-up HotKey menu.

There are two ways to disable or enable a HotKey.

- 1 Highlight the HotKey in the Defined Pop-up HotKeys list. The HotKey's name will appear in the Pop-up HotKey Name field. (If the HotKey is already selected, its name will be in the Pop-up HotKey Name field.)

Enable or disable the HotKey by clicking on the Use Pop-up HotKey checkbox.

(No checkmark in the checkbox = disabled.)

- 2 Highlight the HotKey in the Defined Pop-up HotKeys list and enable or disable the HotKey by clicking on the checkbox to the left of the HotKey.

(No checkmark in the checkbox = disabled.)

Removing a Pop-up HotKey

To remove a HotKey from the Pop-up list:

- 1** Click on the HotKey in the Defined Pop-up HotKeys list.
 - 2** Click on the Remove button.
 - 3** The HotKey will disappear from the list.
-

Changing the order of HotKeys in the Pop-up HotKey menu

To change the order of a HotKey in the Pop-up HotKey menu:

- 1** Click on the HotKey in the Defined Pop-up HotKeys list.
 - 2** Click on the Move Up or Move Down button, depending on which direction you wish to move the HotKey within the list.
 - 3** The HotKey will appear at its new location in the list.
-

Configuration

The Configuration window will allow the user to do the following:

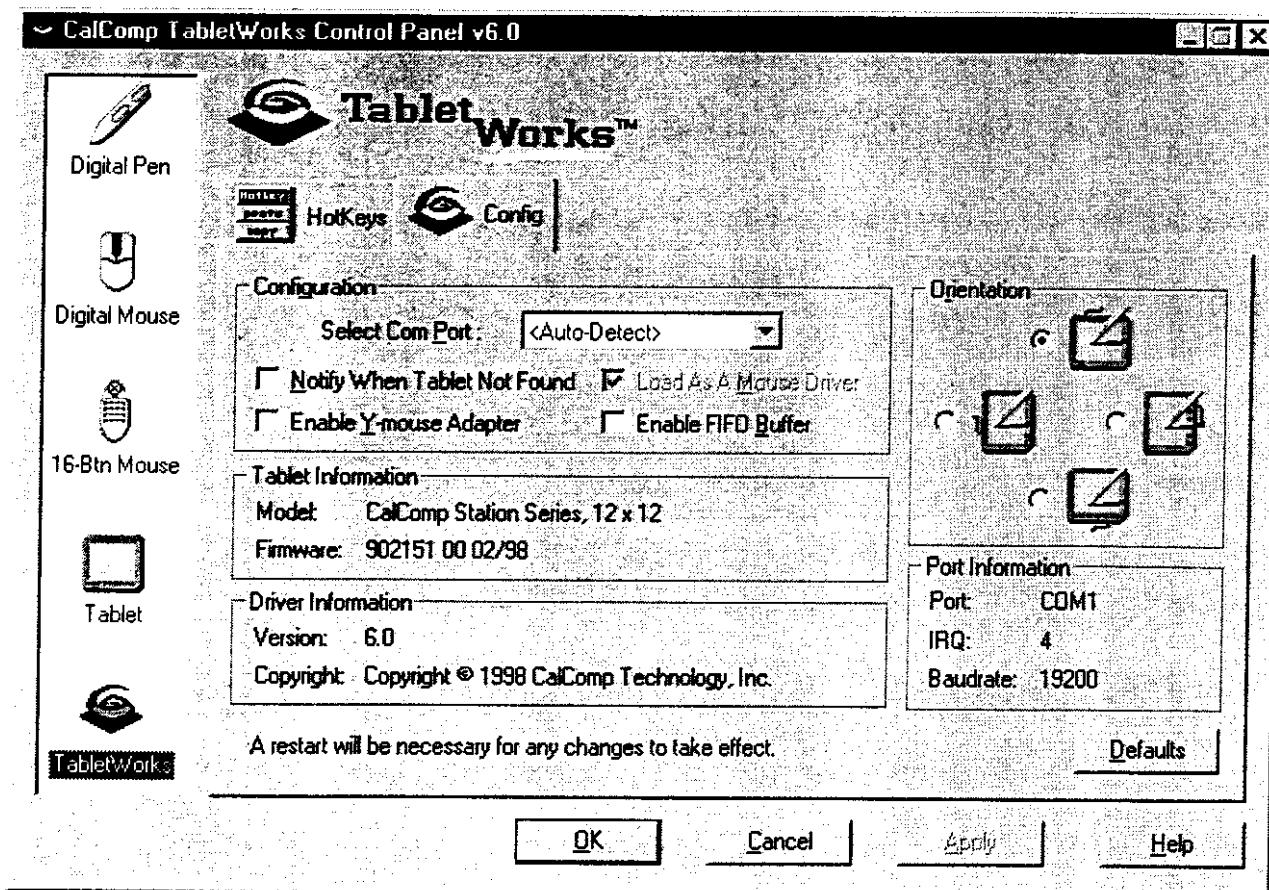
Change a number of general driver settings. (See [Configurable settings](#).)

View the current Tablet, Driver, and Port information. (See below.)

Change the orientation of the tablet. (See [How to rotate the tablet](#).)

The Config tab

The Config tab on the TabletWorks window provides for the configuration of the driver settings. Select the TabletWorks icon, then select the Config tab. The following window will be displayed.



View the current Tablet, Driver, and Port information

The center section of the Config window contains the following information:

Configuration data

Tablet information (Model and Firmware ID)

Driver information (Version and Copyright Info)

Configurable settings

The configurable settings are the following:

Tablet's COM port

Notify When Tablet Not Found

Enable the COM port's FIFO buffer

Enable a Y-mouse adapter

Load-As-A-Mouse Driver

Changes/Defaults

The system will need to be restarted for any changes to take effect.

Selecting the Default button will load the default settings.

Tablet's COM port

The default COM port selection is "Auto-Detect," which will work for most CalComp Station tablets in most situations.

The Auto-Detect COM port selection should only be changed if the driver cannot find a tablet (i.e., Auto-Detect is not working), or if the tablet does not function in Windows. In either case, manually select a COM port and the driver will always load on that COM port.

Notify When Tablet Not Found

The default setting for the Notify When Tablet Not Found option is disabled.

When the Notify When Tablet Not Found option is enabled, the driver will display an error notification message during the system boot process if a tablet is not detected.

This option may be useful for diagnostic purposes. It notifies the user that there may be a problem with the tablet hardware.

Note that this option is automatically disabled if the COM port is manually selected, since the driver will always load on the selected COM port.

Enable the COM port's FIFO buffer

This option allows the user to enable the COM port's FIFO buffer, if this option is supported by the computer hardware.

Enable 'Y-mouse adapter'

This option allows the user to enable the dual-functionality of a Y-Mouse adapter (mouse and tablet on the same COM port). The baud rate is automatically changed to 9600 baud when this option is enabled.

The baud rate is automatically switched back to 19,200 when this option is disabled.

Load-As-A-Mouse Driver

This option allows the user to control whether or not the TabletWorks driver reports as a Mouse driver to the Windows 95 operating system.

When the tablet is the only pointing device connected (no other mouse is on the system), the Tablet driver must report to the operating system that it is a Mouse driver so that the operating system will not warn the user that a mouse was not detected during startup.

This option may be disabled to avoid conflicts with some mouse drivers, such as the GlidePoint on some Compaq laptops.

Change the tablet orientation

To alter the orientation of the tablet, select one of the four rotations available in the Orientation section of the Config window. For more information, see [How to rotate the tablet](#).

Contacting CalComp Inside the US and Canada

CalComp provides driver updates, helpful hints, technical notes, and new product information from its web site. Technical Support can be obtained from CalComp's Technical Support Hotline and Technical Support Fax locations.

CalComp contact locations

Internet URL	- www.calcomp.com
Technical Support Hotline	- (800) 458-5888
Technical Support Fax	- (602) 948-5508

Calling the Technical Support Hotline

Please be at your computer and have the following information available when you call the Technical Support Hotline:

Description of the problem

Name and version of software package you are using

Type of computer you are using

CalComp model number and serial number (see bottom of tablet)

Type of pointing tool you are using

Contacting CalComp Outside the US and Canada

Outside the U.S. and Canada, contact your local CalComp office or dealer.

Legal Stuff

Copyright and Trademarks

© 1998 CalComp Technology, Inc. All rights reserved.

No part of this publication in print or electronic format may be reproduced, stored in a retrieval system, or transmitted, in any form or by any means, electronic, mechanical, photocopying, recording or otherwise, without the prior written permission of CalComp Technology, Inc.

CalComp is a registered trademark.

CreationStation, TabletWorks, QuickClick, and QuickScroll are registered trademarks of CalComp Technology, Inc.

IBM is a registered trademark of International Business Machines Corp.

Microsoft and Microsoft Windows (NT, 3.1, 95) are registered trademarks of Microsoft Corp.

Macintosh is a registered trademark of Apple Inc.

Software License Agreement

This Agreement is a license agreement between you and CalComp for use of a single copy of the included software (Software). The Software is protected by both United States Copyright Law and International Treaty provisions. CalComp authorizes you to make only such archival copies of the Software as are necessary for the sole purpose of backing up your Software and protecting your investment for loss. Copying of the Software for any other reason or distribution of the Software is strictly prohibited. This license is not a sale. Title and copyrights to the Software and accompanying documentation remain with CalComp.

Software Warranty

CalComp warrants the physical diskette and physical documentation enclosed herein to be free of defects in materials and workmanship for a period of 60 days from date of purchase, or 60 days from receipt from CalComp, Inc. In the event of notification within the warranty period of such defects, CalComp will replace the defective diskettes or documentation. This warranty is in lieu of all other warranties. The remedy for breach of this warranty shall be limited to replacement and shall not encompass any other damages.

CalComp specifically disclaims all other warranties, expressed or implied, including but not limited to, implied warranties of merchantability and fitness for a particular purpose. In no event shall CalComp be liable for any loss of profit or any other commercial damage, including but not limited to special, incidental, consequential, or other damages. To the extent applicable, the above warranty shall be construed, interpreted, and governed by the laws of the State of California.
