

Annex E – SAR Plots

Measurement Report for Lectrosonics, Inc. FRONT, 470.100MHz

Device under Test Properties

Model, Manufacturer	Dimensions [mm]	DUT Type
Lectrosonics, Inc.	215.0 x 48.0 x 18.0	Digital Wireless Water-Resistant Micro Transmitter

Exposure Conditions

Phantom Section, TSL	Position, Test Distance [mm]	Frequency [MHz]	Conversion Factor	TSL Conductivity [S/m]	TSL Permittivity
Flat, HSL	FRONT, 0.00	470.100	9.97	0.814	43.2

Hardware Setup

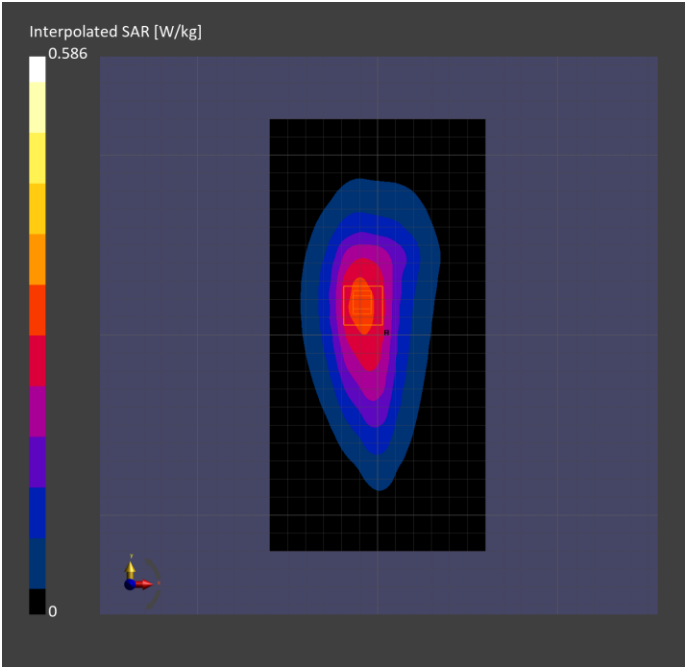
Phantom	TSL, Measured Date	Probe, Calibration Date	DAE, Calibration Date
ELI V8.0 (20deg probe tilt) - 2191	HSL450 Charge: H450-20240917, 2025-Jan-08	EX3DV4 - SN7783, 2024-04-12	DAE4 Sn1724, 2024-03-28

Scan Setup

	Area Scan	Zoom Scan
Grid Extents [mm]	120.0 x 240.0	30.0 x 30.0 x 30.0
Grid Steps [mm]	15.0 x 15.0	6.0 x 6.0 x 1.5
Sensor Surface [mm]	3.0	1.4
Graded Grid	N/A	Yes
Grading Ratio	N/A	1.5
MAIA	N/A	N/A
Surface Detection	All points	All points
Scan Method	Measured	Measured

Measurement Results

	Area Scan	Zoom Scan
Date	2025-01-08, 17:50	2025-01-08, 18:03
psSAR1g [W/kg]	0.291	0.314
psSAR10g [W/kg]	0.203	0.195
Power Drift [dB]	-0.03	0.06
Power Scaling	Disabled	Disabled
Scaling Factor [dB]		
TSL Correction	Positive only	Positive only



Measurement Report for Lectrosonics, Inc. FRONT, 539.025MHz

Device under Test Properties

Model, Manufacturer	Dimensions [mm]	DUT Type
Lectrosonics, Inc.	215.0 x 48.0 x 18.0	Digital Wireless Water-Resistant Micro Transmitter

Exposure Conditions

Phantom Section, TSL	Position, Test Distance [mm]	Frequency [MHz]	Conversion Factor	TSL Conductivity [S/m]	TSL Permittivity
Flat, HSL	FRONT, 0.00	539.025	9.74	0.897	41.2

Hardware Setup

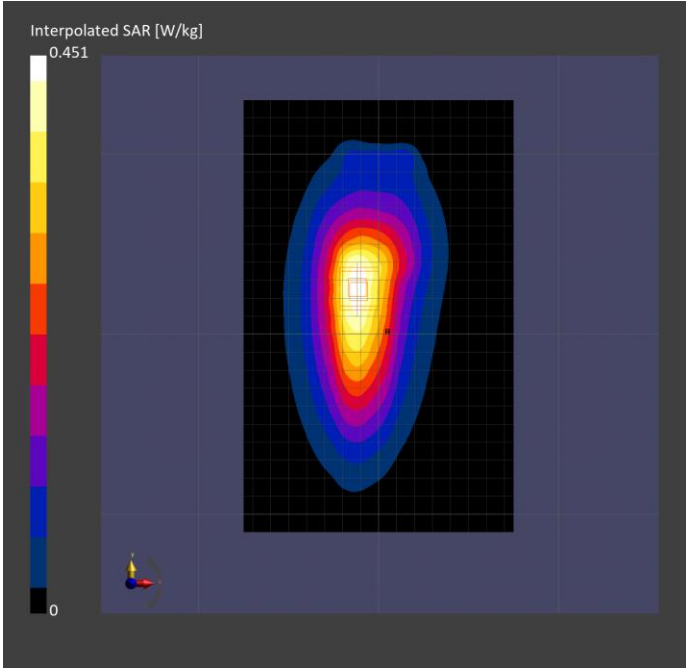
Phantom	TSL, Measured Date	Probe, Calibration Date	DAE, Calibration Date
ELI V8.0 (20deg probe tilt) - 2191	HSL450 Charge: H450-20240917, 2025-Jan-07	EX3DV4 - SN7783, 2024-04-12	DAE4 Sn1724, 2024-03-28

Scan Setup

	Area Scan	Zoom Scan
Grid Extents [mm]	150.0 x 240.0	30.0 x 30.0 x 30.0
Grid Steps [mm]	15.0 x 15.0	6.0 x 6.0 x 1.5
Sensor Surface [mm]	3.0	1.4
Graded Grid	N/A	Yes
Grading Ratio	N/A	1.5
MAIA	N/A	N/A
Surface Detection	All points	All points
Scan Method	Measured	Measured

Measurement Results

	Area Scan	Zoom Scan
Date	2025-01-07, 19:28	2025-01-07, 19:39
psSAR1g [W/kg]	0.211	0.220
psSAR10g [W/kg]	0.144	0.135
Power Drift [dB]	0.00	0.05
Power Scaling	Disabled	Disabled
Scaling Factor [dB]		
TSL Correction	a	Positive only



Measurement Report for Lectrosonics, Inc. FRONT, 607.950MHz

Device under Test Properties

Model, Manufacturer	Dimensions [mm]	DUT Type
Lectrosonics, Inc.	190.0 x 48.0 x 18.0	Digital Wireless Water-Resistant Micro Transmitter

Exposure Conditions

Phantom Section, TSL	Position, Test Distance [mm]	Frequency [MHz]	Conversion Factor	TSL Conductivity [S/m]	TSL Permittivity
Flat, HSL	FRONT, 0.00	607.950	9.74	0.798	40.7

Hardware Setup

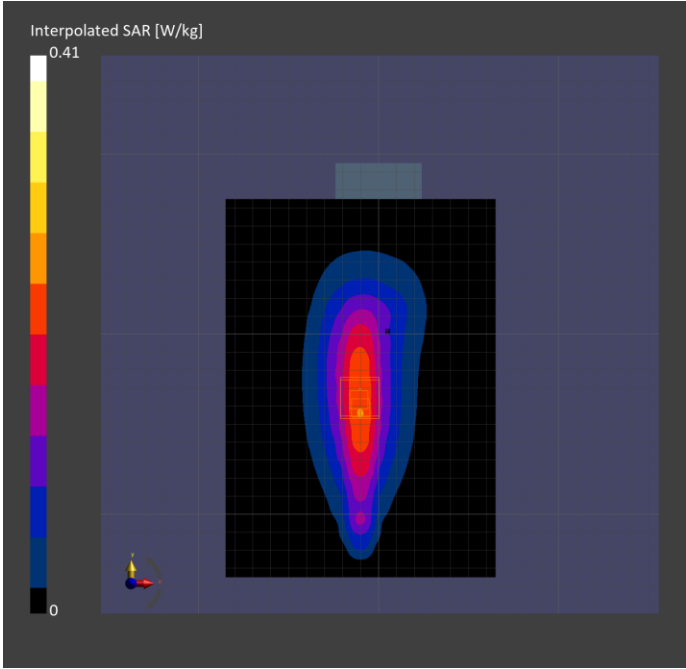
Phantom	TSL, Measured Date	Probe, Calibration Date	DAE, Calibration Date
ELI V8.0 (20deg probe tilt) - 2191	HBBL-600-10000 SLAAHU16BC221222-1, 2025-Jan-08	EX3DV4 - SN7783, 2024-04-12	DAE4 Sn1724, 2024-03-28

Scan Setup

	Area Scan	Zoom Scan
Grid Extents [mm]	150.0 x 210.0	30.0 x 30.0 x 30.0
Grid Steps [mm]	15.0 x 15.0	6.0 x 6.0 x 1.5
Sensor Surface [mm]	3.0	1.4
Graded Grid	N/A	Yes
Grading Ratio	N/A	1.5
MAIA	N/A	N/A
Surface Detection	All points	All points
Scan Method	Measured	Measured

Measurement Results

	Area Scan	Zoom Scan
Date	2025-01-08, 22:38	2025-01-08, 22:52
psSAR1g [W/kg]	0.222	0.224
psSAR10g [W/kg]	0.144	0.138
Power Drift [dB]	-0.06	-0.00
Power Scaling	Disabled	Disabled
Scaling Factor [dB]		
TSL Correction	Positive only	Positive only



Measurement Report for Lectrosonics, Inc. BACK, 539.025MHz

Device under Test Properties

Model, Manufacturer	Dimensions [mm]	DUT Type
Lectrosonics, Inc.	215.0 x 48.0 x 18.0	Digital Wireless Water-Resistant Micro Transmitter

Exposure Conditions

Phantom Section, TSL	Position, Test Distance [mm]	Frequency [MHz]	Conversion Factor	TSL Conductivity [S/m]	TSL Permittivity
Flat, HSL	BACK, 0.00	539.025	9.74	0.897	41.2

Hardware Setup

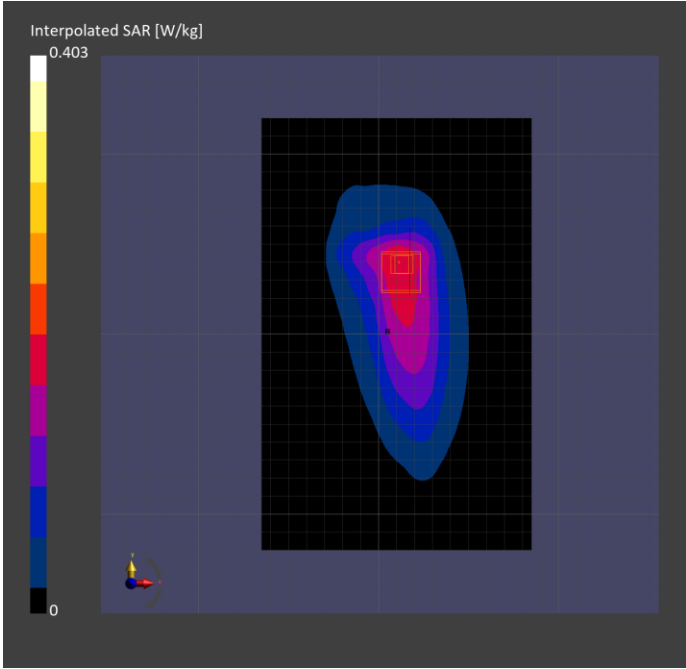
Phantom	TSL, Measured Date	Probe, Calibration Date	DAE, Calibration Date
ELI V8.0 (20deg probe tilt) - 2191	HSL450 Charge: H450-20240917, 2025-Jan-07	EX3DV4 - SN7783, 2024-04-12	DAE4 Sn1724, 2024-03-28

Scan Setup

	Area Scan	Zoom Scan
Grid Extents [mm]	150.0 x 240.0	30.0 x 30.0 x 30.0
Grid Steps [mm]	15.0 x 15.0	6.0 x 6.0 x 1.5
Sensor Surface [mm]	3.0	1.4
Graded Grid	N/A	Yes
Grading Ratio	N/A	1.5
MAIA	N/A	N/A
Surface Detection	All points	All points
Scan Method	Measured	Measured

Measurement Results

	Area Scan	Zoom Scan
Date	2025-01-07, 20:18	2025-01-07, 20:33
psSAR1g [W/kg]	0.174	0.181
psSAR10g [W/kg]	0.120	0.112
Power Drift [dB]	-0.11	0.07
Power Scaling	Disabled	Disabled
Scaling Factor [dB]		
TSL Correction	Positive only	Positive only



Measurement Report for Lectrosonics, Inc. EDGE RIGHT, 539.025MHz

Device under Test Properties

Model, Manufacturer	Dimensions [mm]	DUT Type
Lectrosonics, Inc.	215.0 x 48.0 x 18.0	Digital Wireless Water-Resistant Micro Transmitter

Exposure Conditions

Phantom Section, TSL	Position, Test Distance [mm]	Frequency [MHz]	Conversion Factor	TSL Conductivity [S/m]	TSL Permittivity
Flat, HSL	EDGE RIGHT, 0.00	539.025	9.74	0.97	41.2

Hardware Setup

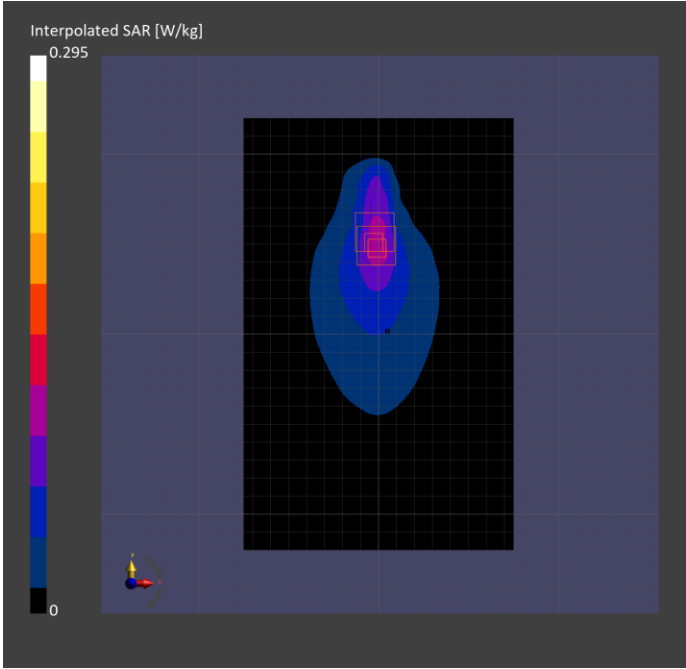
Phantom	TSL, Measured Date	Probe, Calibration Date	DAE, Calibration Date
ELI V8.0 (20deg probe tilt) - 2191	HSL450 Charge: H450-20240917, 2025-Jan-07	EX3DV4 - SN7783, 2024-04-12	DAE4 Sn1724, 2024-03-28

Scan Setup

	Area Scan	Zoom Scan
Grid Extents [mm]	150.0 x 240.0	30.0 x 30.0 x 30.0
Grid Steps [mm]	15.0 x 15.0	6.0 x 6.0 x 1.5
Sensor Surface [mm]	3.0	1.4
Graded Grid	N/A	Yes
Grading Ratio	N/A	1.5
MAIA	N/A	N/A
Surface Detection	All points	All points
Scan Method	Measured	Measured

Measurement Results

	Area Scan	Zoom Scan
Date	2025-01-07, 21:37	2025-01-07, 21:49
psSAR1g [W/kg]	0.096	0.095
psSAR10g [W/kg]	0.061	0.052
Power Drift [dB]	-0.13	0.09
Power Scaling	Disabled	Disabled
Scaling Factor [dB]		
TSL Correction	Positive only	Positive only



Measurement Report for Lectrosonics, Inc. EDGE LEFT, 539.025MHz

Device under Test Properties

Model, Manufacturer	Dimensions [mm]	DUT Type
Lectrosonics, Inc.	215.0 x 48.0 x 18.0	Digital Wireless Water-Resistant Micro Transmitter

Exposure Conditions

Phantom Section, TSL	Position, Test Distance [mm]	Frequency [MHz]	Conversion Factor	TSL Conductivity [S/m]	TSL Permittivity
Flat, HSL	EDGE LEFT, 0.00	539.025	9.74	0.897	41.2

Hardware Setup

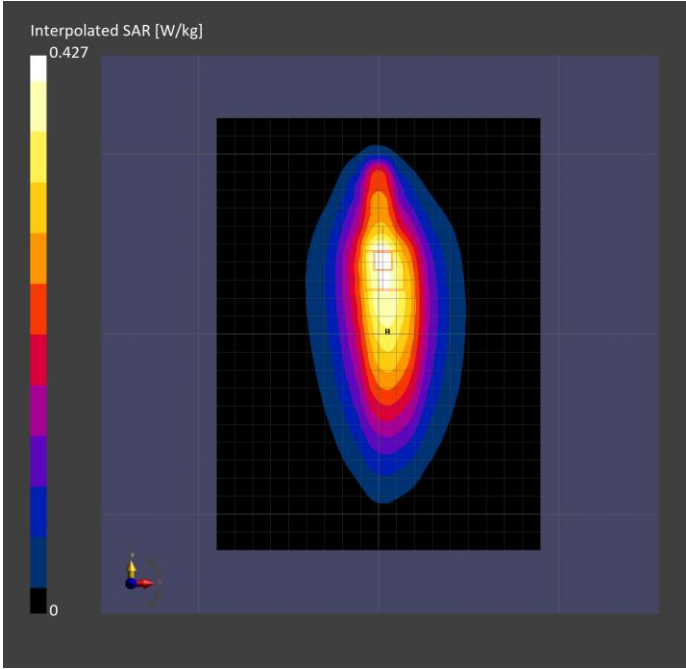
Phantom	TSL, Measured Date	Probe, Calibration Date	DAE, Calibration Date
ELI V8.0 (20deg probe tilt) - 2191	HSL450 Charge: H450-20240917, 2025-Jan-07	EX3DV4 - SN7783, 2024-04-12	DAE4 Sn1724, 2024-03-28

Scan Setup

	Area Scan	Zoom Scan
Grid Extents [mm]	180.0 x 240.0	30.0 x 30.0 x 30.0
Grid Steps [mm]	15.0 x 15.0	6.0 x 6.0 x 1.5
Sensor Surface [mm]	3.0	1.4
Graded Grid	N/A	Yes
Grading Ratio	N/A	1.5
MAIA	N/A	N/A
Surface Detection	All points	All points
Scan Method	Measured	Measured

Measurement Results

	Area Scan	Zoom Scan
Date	2025-01-07, 21:00	2025-01-07, 21:13
psSAR1g [W/kg]	0.203	0.209
psSAR10g [W/kg]	0.137	0.130
Power Drift [dB]	-0.03	0.00
Power Scaling	Disabled	Disabled
Scaling Factor [dB]		
TSL Correction	Positive only	Positive only



Measurement Report for Lectrosonics, Inc. EDGE BOTTOM, 539.025MHz

Device under Test Properties

Model, Manufacturer	Dimensions [mm]	DUT Type
Lectrosonics, Inc.	215.0 x 48.0 x 18.0	Digital Wireless Water-Resistant Micro Transmitter

Exposure Conditions

Phantom Section, TSL	Position, Test Distance [mm]	Frequency [MHz]	Conversion Factor	TSL Conductivity [S/m]	TSL Permittivity
Flat, HSL	EDGE BOTTOM, 0.00	539.025	9.74	0.897	41.2

Hardware Setup

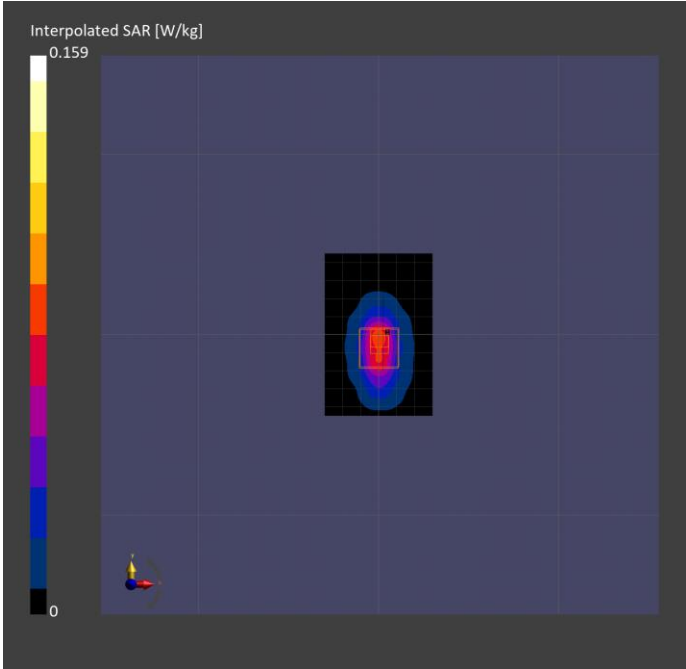
Phantom	TSL, Measured Date	Probe, Calibration Date	DAE, Calibration Date
ELI V8.0 (20deg probe tilt) - 2191	HSL450 Charge: H450-20240917, 2025-Jan-07	EX3DV4 - SN7783, 2024-04-12	DAE4 Sn1724, 2024-03-28

Scan Setup

	Area Scan	Zoom Scan
Grid Extents [mm]	60.0 x 90.0	30.0 x 30.0 x 30.0
Grid Steps [mm]	15.0 x 15.0	5.7 x 5.7 x 1.5
Sensor Surface [mm]	3.0	1.4
Graded Grid	N/A	Yes
Grading Ratio	N/A	1.5
MAIA	Y	Y
Surface Detection	All points	All points
Scan Method	Measured	Measured

Measurement Results

	Area Scan	Zoom Scan
Date	2025-01-07, 21:55	2025-01-07, 22:10
psSAR1g [W/kg]	0.045	0.042
psSAR10g [W/kg]	0.026	0.019
Power Drift [dB]	0.04	0.25
Power Scaling	Disabled	Disabled
Scaling Factor [dB]		
TSL Correction	Positive only	Positive only



Measurement Report for Lectrosonics, Inc. EDGE TOP, 539.025MHz

Device under Test Properties

Model, Manufacturer	Dimensions [mm]	DUT Type
Lectrosonics, Inc.	215.0 x 48.0 x 18.0	Digital Wireless Water-Resistant Micro Transmitter

Exposure Conditions

Phantom Section, TSL	Position, Test Distance [mm]	Frequency [MHz]	Conversion Factor	TSL Conductivity [S/m]	TSL Permittivity
Flat, HSL	EDGE TOP, 0.00	539.025	9.74	0.897	41.2

Hardware Setup

Phantom	TSL, Measured Date	Probe, Calibration Date	DAE, Calibration Date
ELI V8.0 (20deg probe tilt) - 2191	HSL450 Charge: H450-20240917, 2025-Jan-07	EX3DV4 - SN7783, 2024-04-12	DAE4 Sn1724, 2024-03-28

Scan Setup

	Area Scan	Zoom Scan
Grid Extents [mm]	60.0 x 90.0	x x
Grid Steps [mm]	15.0 x 15.0	x x
Sensor Surface [mm]	3.0	
Graded Grid	N/A	
Grading Ratio	N/A	
MAIA	Y	
Surface Detection	All points	
Scan Method	Measured	

Measurement Results

	Area Scan	Zoom Scan
Date	2025-01-07, 22:17	
psSAR1g [W/kg]	0.013	
psSAR10g [W/kg]	0.007	
Power Drift [dB]	0.52	
Power Scaling	Disabled	
Scaling Factor [dB]		
TSL Correction	Positive only	

