

Annex E – SAR Plots

Measurement Report for Lectrosonics, Inc. FRONT, 941.525MHz

Device under Test Properties

Model, Manufacturer	Dimensions [mm]	DUT Type
Lectrosonics, Inc.	150.0 x 48.0 x 18.0	Digital Wireless Water-Resistant Micro Transmitter

Exposure Conditions

Phantom Section, TSL	Position, Test Distance [mm]	Frequency [MHz]	Conversion Factor	TSL Conductivity [S/m]	TSL Permittivity
Flat, HSL	FRONT, 0.00	941.525	9.05	0.903	40.2

Hardware Setup

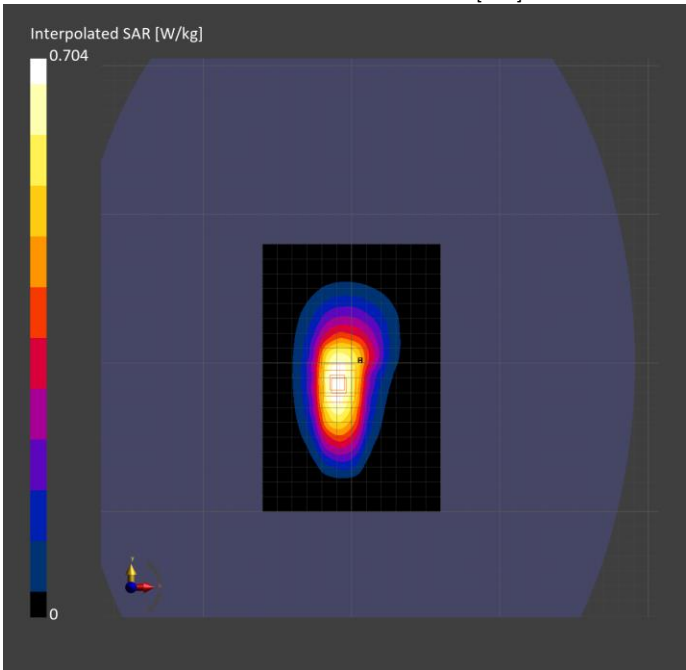
Phantom	TSL, Measured Date	Probe, Calibration Date	DAE, Calibration Date
ELI V8.0 (20deg probe tilt) - 2191	HBBL-600-10000 SLAAHU16BC221222-1, 2025-Jan-06	EX3DV4 - SN7783, 2024-04-12	DAE4 Sn1561, 2023-01-23

Scan Setup

	Area Scan	Zoom Scan
Grid Extents [mm]	120.0 x 180.0	30.0 x 30.0 x 30.0
Grid Steps [mm]	15.0 x 15.0	6.0 x 6.0 x 1.5
Sensor Surface [mm]	3.0	1.4
Graded Grid	N/A	Yes
Grading Ratio	N/A	1.5
MAIA	N/A	N/A
Surface Detection	All points	All points
Scan Method	Measured	Measured

Measurement Results

	Area Scan	Zoom Scan
Date	2025-01-06, 17:39	2025-01-06, 17:51
psSAR1g [W/kg]	0.363	0.409
psSAR10g [W/kg]	0.236	0.240
Power Drift [dB]	-0.03	0.01
Power Scaling	Disabled	Disabled
Scaling Factor [dB]		
TSL Correction	Positive only	Positive only
M2/M1 [%]		82.1
Dist 3dB Peak [mm]		12.0



Measurement Report for Lectrosonics, Inc. FRONT, 946.750MHz

Device under Test Properties

Model, Manufacturer	Dimensions [mm]	DUT Type
Lectrosonics, Inc.	150.0 x 48.0 x 18.0	Digital Wireless Water-Resistant Micro Transmitter

Exposure Conditions

Phantom Section, TSL	Position, Test Distance [mm]	Frequency [MHz]	Conversion Factor	TSL Conductivity [S/m]	TSL Permittivity
Flat, HSL	FRONT, 0.00	946.750	9.05	0.906	40.2

Hardware Setup

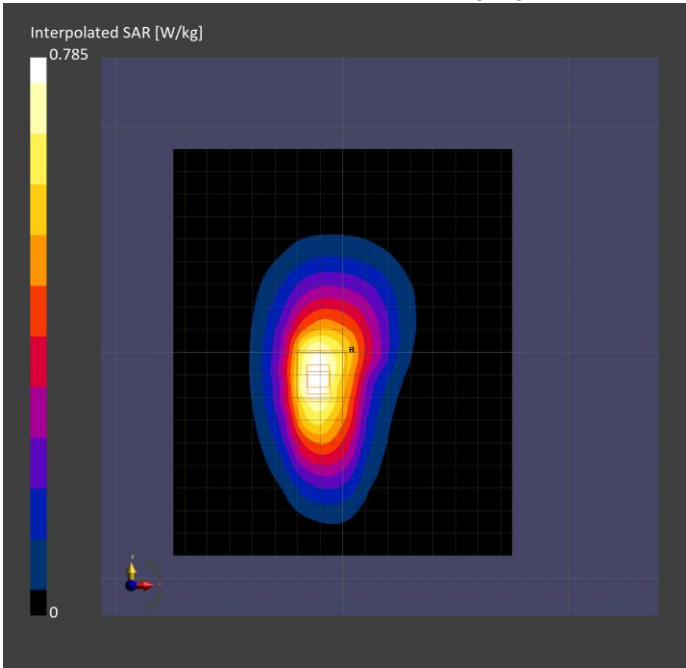
Phantom	TSL, Measured Date	Probe, Calibration Date	DAE, Calibration Date
ELI V8.0 (20deg probe tilt) - 2191	HBBL-600-10000 SLAAHU16BC221222-1, 2025-Jan-03	EX3DV4 - SN7783, 2024-04-12	DAE4 Sn1561, 2023-01-23

Scan Setup

	Area Scan	Zoom Scan
Grid Extents [mm]	150.0 x 180.0	30.0 x 30.0 x 30.0
Grid Steps [mm]	15.0 x 15.0	6.0 x 6.0 x 1.5
Sensor Surface [mm]	3.0	1.4
Graded Grid	N/A	Yes
Grading Ratio	N/A	1.5
MAIA	N/A	N/A
Surface Detection	All points	All points
Scan Method	Measured	Measured

Measurement Results

	Area Scan	Zoom Scan
Date	2025-01-03, 19:13	2025-01-03, 19:24
psSAR1g [W/kg]	0.447	0.465
psSAR10g [W/kg]	0.284	0.274
Power Drift [dB]	-0.01	-0.01
Power Scaling	Disabled	Disabled
Scaling Factor [dB]		
TSL Correction	Positive only	Positive only
M2/M1 [%]		81.9
Dist 3dB Peak [mm]		12.6



Measurement Report for Lectrosonics, Inc. FRONT, 951.975MHz

Device under Test Properties

Model, Manufacturer	Dimensions [mm]	DUT Type
Lectrosonics, Inc.	150.0 x 48.0 x 18.0	Digital Wireless Water-Resistant Micro Transmitter

Exposure Conditions

Phantom Section, TSL	Position, Test Distance [mm]	Frequency [MHz]	Conversion Factor	TSL Conductivity [S/m]	TSL Permittivity
Flat, HSL	FRONT, 0.00	951.975	9.05	0.919	39.7

Hardware Setup

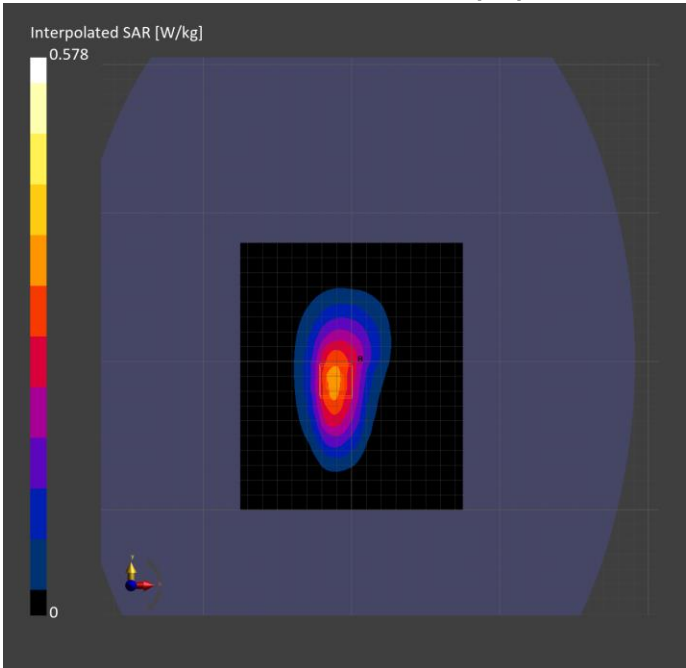
Phantom	TSL, Measured Date	Probe, Calibration Date	DAE, Calibration Date
ELI V8.0 (20deg probe tilt) - 2191	HBBL-600-10000 SLAAHU16BC221222-1, 2025-Jan-06	EX3DV4 - SN7783, 2024-04-12	DAE4 Sn1561, 2023-01-23

Scan Setup

	Area Scan	Zoom Scan
Grid Extents [mm]	150.0 x 180.0	30.0 x 30.0 x 30.0
Grid Steps [mm]	15.0 x 15.0	6.0 x 6.0 x 1.5
Sensor Surface [mm]	3.0	1.4
Graded Grid	N/A	Yes
Grading Ratio	N/A	1.5
MAIA	N/A	N/A
Surface Detection	All points	All points
Scan Method	Measured	Measured

Measurement Results

	Area Scan	Zoom Scan
Date	2025-01-06, 18:12	2025-01-06, 18:24
psSAR1g [W/kg]	0.326	0.346
psSAR10g [W/kg]	0.209	0.211
Power Drift [dB]	-0.04	0.00
Power Scaling	Disabled	Disabled
Scaling Factor [dB]		
TSL Correction	Positive only	Positive only
M2/M1 [%]		81.6
Dist 3dB Peak [mm]		13.2



Measurement Report for Lectrosonics, Inc. FRONT, 954.625MHz

Device under Test Properties

Model, Manufacturer	Dimensions [mm]	DUT Type
Lectrosonics, Inc.	150.0 x 48.0 x 18.0	Digital Wireless Water-Resistant Micro Transmitter

Exposure Conditions

Phantom Section, TSL	Position, Test Distance [mm]	Frequency [MHz]	Conversion Factor	TSL Conductivity [S/m]	TSL Permittivity
Flat, HSL	FRONT, 0.00	954.625	9.05	0.920	39.7

Hardware Setup

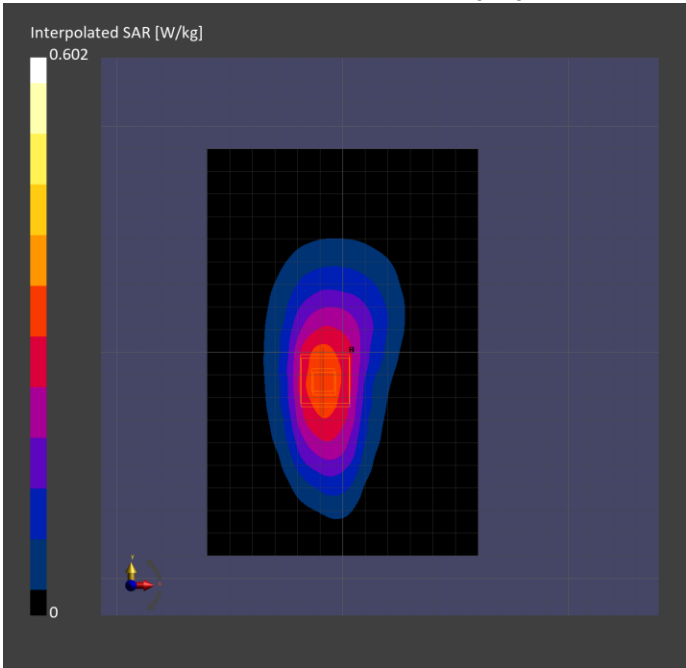
Phantom	TSL, Measured Date	Probe, Calibration Date	DAE, Calibration Date
ELI V8.0 (20deg probe tilt) - 2191	HBBL-600-10000 SLAAHU16BC221222-1, 2025-Jan-06	EX3DV4 - SN7783, 2024-04-12	DAE4 Sn1561, 2023-01-23

Scan Setup

	Area Scan	Zoom Scan
Grid Extents [mm]	120.0 x 180.0	30.0 x 30.0 x 30.0
Grid Steps [mm]	15.0 x 15.0	6.0 x 6.0 x 1.5
Sensor Surface [mm]	3.0	1.4
Graded Grid	N/A	Yes
Grading Ratio	N/A	1.5
MAIA	N/A	N/A
Surface Detection	All points	All points
Scan Method	Measured	Measured

Measurement Results

	Area Scan	Zoom Scan
Date	2025-01-06, 19:10	2025-01-06, 19:22
psSAR1g [W/kg]	0.315	0.353
psSAR10g [W/kg]	0.204	0.208
Power Drift [dB]	0.01	0.02
Power Scaling	Disabled	Disabled
Scaling Factor [dB]		
TSL Correction	Positive only	Positive only
M2/M1 [%]		82.3
Dist 3dB Peak [mm]		12.1



Measurement Report for Device, FRONT, 958.150MHz

Device under Test Properties

Model, Manufacturer	Dimensions [mm]	DUT Type
Device,	150.0 x 48.0 x 18.0	Digital Wireless Water-Resistant Micro Transmitter

Exposure Conditions

Phantom Section, TSL	Position, Test Distance [mm]	Frequency [MHz]	Conversion Factor	TSL Conductivity [S/m]	TSL Permittivity
Flat, HSL	FRONT, 0.00	958.150	9.05	0.913	39.6

Hardware Setup

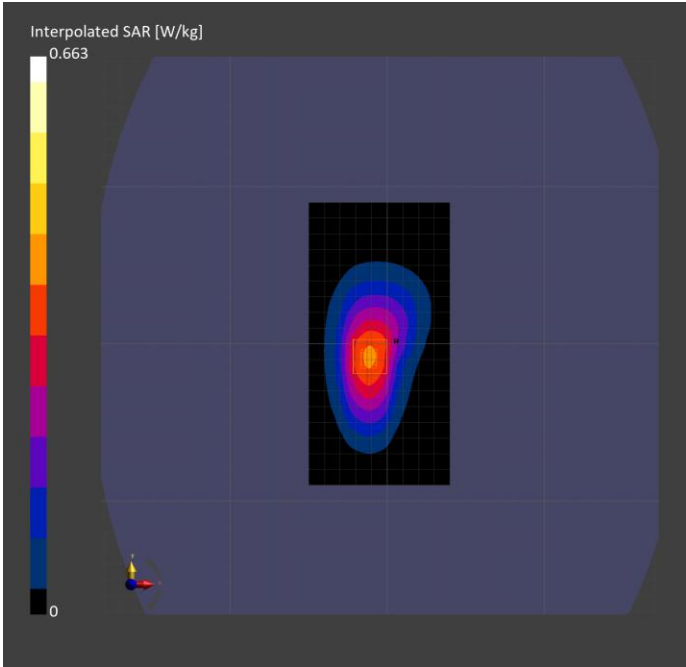
Phantom	TSL, Measured Date	Probe, Calibration Date	DAE, Calibration Date
ELI V8.0 (20deg probe tilt) - 2191	HBBL-600-10000 SLAAHU16BC221222-1, 2025-Jan-16	EX3DV4 - SN7783, 2023-01-24	DAE4 Sn1724, 2024-03-28

Scan Setup

	Area Scan	Zoom Scan
Grid Extents [mm]	90.0 x 180.0	30.0 x 30.0 x 30.0
Grid Steps [mm]	15.0 x 15.0	6.0 x 6.0 x 1.5
Sensor Surface [mm]	3.0	1.4
Graded Grid	N/A	Yes
Grading Ratio	N/A	1.5
MAIA	N/A	N/A
Surface Detection	All points	All points
Scan Method	Measured	Measured

Measurement Results

	Area Scan	Zoom Scan
Date	2025-01-16, 22:31	2025-01-16, 22:42
psSAR1g [W/kg]	0.370	0.401
psSAR10g [W/kg]	0.241	0.238
Power Drift [dB]	-0.01	-0.03
Power Scaling	Disabled	Disabled
Scaling Factor [dB]		
TSL Correction	Positive only	Positive only
M2/M1 [%]		83.1
Dist 3dB Peak [mm]		12.1



Measurement Report for Lectrosonics, Inc. BACK, 946.750MHz

Device under Test Properties

Model, Manufacturer	Dimensions [mm]	DUT Type
Lectrosonics, Inc.	150.0 x 48.0 x 18.0	Digital Wireless Water-Resistant Micro Transmitter

Exposure Conditions

Phantom Section, TSL	Position, Test Distance [mm]	Frequency [MHz], Channel Number	Conversion Factor	TSL Conductivity [S/m]	TSL Permittivity
Flat, HSL	BACK, 0.00	946.750, 946800	9.05	0.906	40.2

Hardware Setup

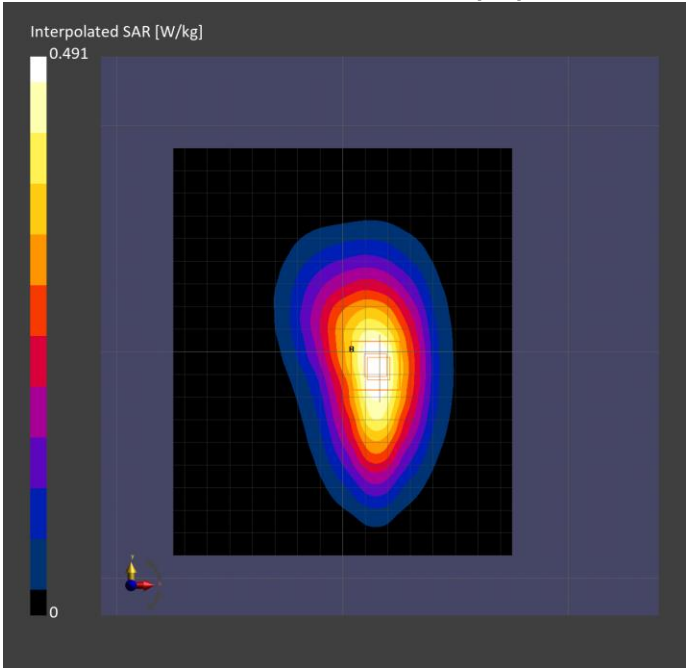
Phantom	TSL, Measured Date	Probe, Calibration Date	DAE, Calibration Date
ELI V8.0 (20deg probe tilt) - 2191	HBBL-600-10000 SLAAHU16BC221222-1, 2025-Jan-03	EX3DV4 - SN7783, 2024-04-12	DAE4 Sn1561, 2023-01-23

Scan Setup

	Area Scan	Zoom Scan
Grid Extents [mm]	150.0 x 180.0	30.0 x 30.0 x 30.0
Grid Steps [mm]	15.0 x 15.0	6.0 x 6.0 x 1.5
Sensor Surface [mm]	3.0	1.4
Graded Grid	N/A	Yes
Grading Ratio	N/A	1.5
MAIA	N/A	N/A
Surface Detection	All points	All points
Scan Method	Measured	Measured

Measurement Results

	Area Scan	Zoom Scan
Date	2025-01-03, 20:09	2025-01-03, 20:21
psSAR1g [W/kg]	0.327	0.327
psSAR10g [W/kg]	0.209	0.208
Power Drift [dB]	-0.03	0.02
Power Scaling	Disabled	Disabled
Scaling Factor [dB]		
TSL Correction	Positive only	Positive only
M2/M1 [%]		85.2
Dist 3dB Peak [mm]		14.5



Measurement Report for Lectrosonics, Inc. BACK, 954.625MHz

Device under Test Properties

Model, Manufacturer	Dimensions [mm]	DUT Type
Lectrosonics, Inc.	150.0 x 48.0 x 18.0	Digital Wireless Water-Resistant Micro Transmitter

Exposure Conditions

Phantom Section, TSL	Position, Test Distance [mm]	Frequency [MHz], Channel Number	Conversion Factor	TSL Conductivity [S/m]	TSL Permittivity
Flat, HSL	BACK, 0.00	954.625	9.05	0.920	39.7

Hardware Setup

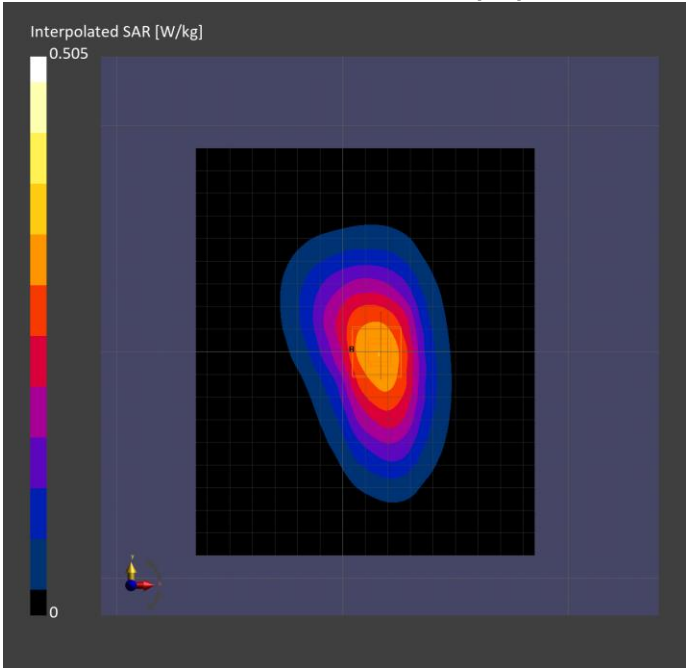
Phantom	TSL, Measured Date	Probe, Calibration Date	DAE, Calibration Date
ELI V8.0 (20deg probe tilt) - 2191	HBBL-600-10000 SLAAHU16BC221222-1, 2025-Jan-06	EX3DV4 - SN7783, 2024-04-12	DAE4 Sn1561, 2023-01-23

Scan Setup

	Area Scan	Zoom Scan
Grid Extents [mm]	150.0 x 180.0	30.0 x 30.0 x 30.0
Grid Steps [mm]	15.0 x 15.0	6.0 x 6.0 x 1.5
Sensor Surface [mm]	3.0	1.4
Graded Grid	N/A	Yes
Grading Ratio	N/A	1.5
MAIA	N/A	N/A
Surface Detection	All points	All points
Scan Method	Measured	Measured

Measurement Results

	Area Scan	Zoom Scan
Date	2025-01-06, 19:42	2025-01-06, 19:53
psSAR1g [W/kg]	0.311	0.329
psSAR1s0g [W/kg]	0.205	0.211
Power Drift [dB]	-0.02	0.00
Power Scaling	Disabled	Disabled
Scaling Factor [dB]		
TSL Correction	Positive only	Positive only
M2/M1 [%]		85.1
Dist 3dB Peak [mm]		14.4



Measurement Report for Lectrosonics, Inc. BACK, 958.150MHz

Device under Test Properties

Model, Manufacturer	Dimensions [mm]	DUT Type
Lectrosonics, Inc.	150.0 x 48.0 x 18.0	Digital Wireless Water-Resistant Micro Transmitter

Exposure Conditions

Phantom Section, TSL	Position, Test Distance [mm]	Frequency [MHz]	Conversion Factor	TSL Conductivity [S/m]	TSL Permittivity
Flat, HSL	BACK, 0.00	958.150	9.05	0.913	39.6

Hardware Setup

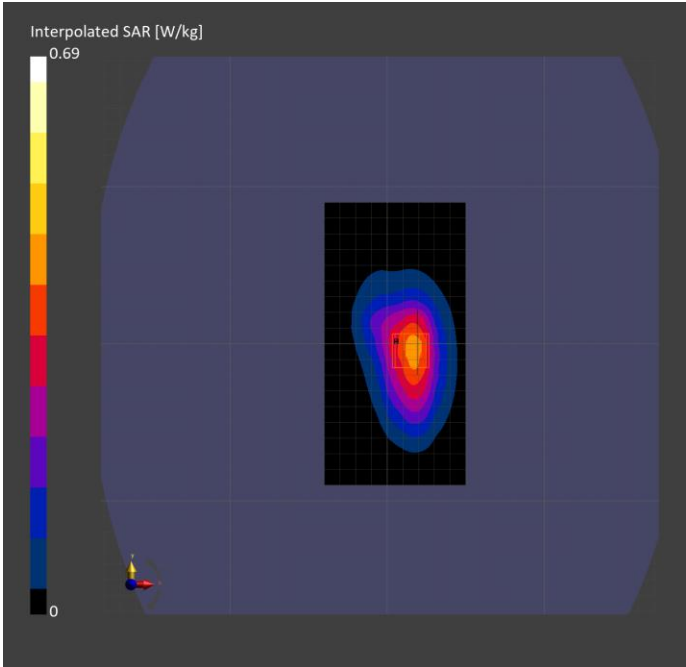
Phantom	TSL, Measured Date	Probe, Calibration Date	DAE, Calibration Date
ELI V8.0 (20deg probe tilt) - 2191	HBBL-600-10000 SLAAHU16BC221222-1, 2025-Jan-16	EX3DV4 - SN7783, 2023-01-24	DAE4 Sn1724, 2024-03-28

Scan Setup

	Area Scan	Zoom Scan
Grid Extents [mm]	90.0 x 180.0	30.0 x 30.0 x 30.0
Grid Steps [mm]	15.0 x 15.0	6.0 x 6.0 x 1.5
Sensor Surface [mm]	3.0	1.4
Graded Grid	N/A	Yes
Grading Ratio	N/A	1.5
MAIA	N/A	N/A
Surface Detection	All points	All points
Scan Method	Measured	Measured

Measurement Results

	Area Scan	Zoom Scan
Date	2025-01-17, 12:07	2025-01-17, 12:21
psSAR1g [W/kg]	0.398	0.400
psSAR10g [W/kg]	0.253	0.249
Power Drift [dB]	-0.04	-0.01
Power Scaling	Disabled	Disabled
Scaling Factor [dB]		
TSL Correction	Positive only	Positive only
M2/M1 [%]		83.6
Dist 3dB Peak [mm]		12.0



Measurement Report for Lectrosonics, Inc. EDGE RIGHT, 946.750MHz

Device under Test Properties

Model, Manufacturer	Dimensions [mm]	DUT Type
Lectrosonics, Inc.	150.0 x 48.0 x 18.0	Digital Wireless Water-Resistant Micro Transmitter

Exposure Conditions

Phantom Section, TSL	Position, Test Distance [mm]	Frequency [MHz]	Conversion Factor	TSL Conductivity [S/m]	TSL Permittivity
Flat, HSL	EDGE RIGHT, 0.00	946.750	9.05	0.906	40.2

Hardware Setup

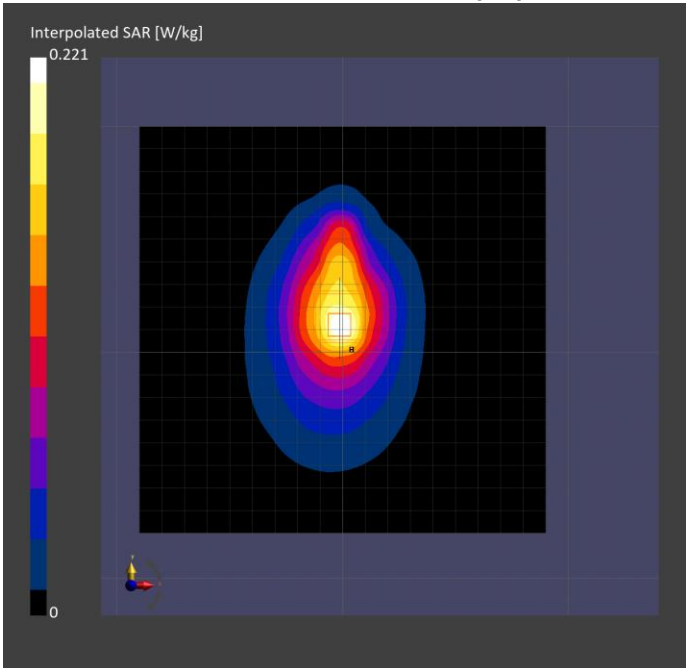
Phantom	TSL, Measured Date	Probe, Calibration Date	DAE, Calibration Date
ELI V8.0 (20deg probe tilt) - 2191	HBBL-600-10000 SLAAHU16BC221222-1, 2025-Jan-03	EX3DV4 - SN7783, 2024-04-12	DAE4 Sn1561, 2023-01-23

Scan Setup

	Area Scan	Zoom Scan
Grid Extents [mm]	180.0 x 180.0	30.0 x 30.0 x 30.0
Grid Steps [mm]	15.0 x 15.0	6.0 x 6.0 x 1.5
Sensor Surface [mm]	3.0	1.4
Graded Grid	N/A	Yes
Grading Ratio	N/A	1.5
MAIA	N/A	N/A
Surface Detection	All points	All points
Scan Method	Measured	Measured

Measurement Results

	Area Scan	Zoom Scan
Date	2025-01-03, 21:14	2025-01-03, 21:27
psSAR1g [W/kg]	0.131	0.128
psSAR10g [W/kg]	0.080	0.077
Power Drift [dB]	0.03	0.01
Power Scaling	Disabled	Disabled
Scaling Factor [dB]		
TSL Correction	Positive only	Positive only
M2/M1 [%]		82.3
Dist 3dB Peak [mm]		13.5



Measurement Report for Lectrosonics, Inc. EDGE RIGHT, 954.625MHz

Device under Test Properties

Model, Manufacturer	Dimensions [mm]	DUT Type
Lectrosonics, Inc.	150.0 x 48.0 x 18.0	Digital Wireless Water-Resistant Micro Transmitter

Exposure Conditions

Phantom Section, TSL	Position, Test Distance [mm]	Frequency [MHz]	Conversion Factor	TSL Conductivity [S/m]	TSL Permittivity
Flat, HSL	EDGE RIGHT, 0.00	954.625	9.05	0.920	39.7

Hardware Setup

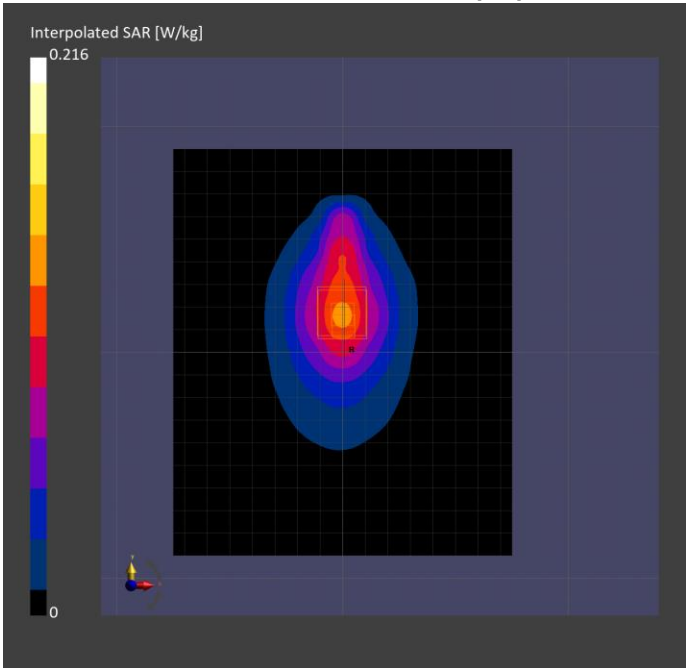
Phantom	TSL, Measured Date	Probe, Calibration Date	DAE, Calibration Date
ELI V8.0 (20deg probe tilt) - 2191	HBBL-600-10000 SLAAHU16BC221222-1, 2025-Jan-06	EX3DV4 - SN7783, 2024-04-12	DAE4 Sn1561, 2023-01-23

Scan Setup

	Area Scan	Zoom Scan
Grid Extents [mm]	150.0 x 180.0	30.0 x 30.0 x 30.0
Grid Steps [mm]	15.0 x 15.0	6.0 x 6.0 x 1.5
Sensor Surface [mm]	3.0	1.4
Graded Grid	N/A	Yes
Grading Ratio	N/A	1.5
MAIA	N/A	N/A
Surface Detection	All points	All points
Scan Method	Measured	Measured

Measurement Results

	Area Scan	Zoom Scan
Date	2025-01-06, 20:47	2025-01-06, 21:00
psSAR1g [W/kg]	0.119	0.122
psSAR10g [W/kg]	0.075	0.075
Power Drift [dB]	0.19	0.02
Power Scaling	Disabled	Disabled
Scaling Factor [dB]		
TSL Correction	Positive only	Positive only
M2/M1 [%]		80.6
Dist 3dB Peak [mm]		13.0



Measurement Report for Lectrosonics, Inc. EDGE RIGHT, 958.150MHz

Device under Test Properties

Model, Manufacturer	Dimensions [mm]	DUT Type
Lectrosonics, Inc.	150.0 x 48.0 x 18.0	Digital Wireless Water-Resistant Micro Transmitter

Exposure Conditions

Phantom Section, TSL	Position, Test Distance [mm]	Frequency [MHz]	Conversion Factor	TSL Conductivity [S/m]	TSL Permittivity
Flat, HSL	EDGE RIGHT, 0.00	958.150	9.05	0.913	39.6

Hardware Setup

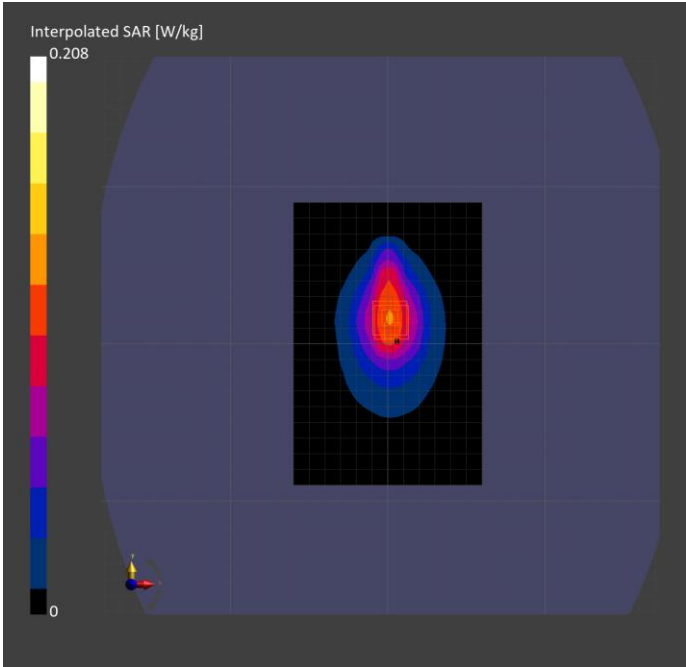
Phantom	TSL, Measured Date	Probe, Calibration Date	DAE, Calibration Date
ELI V8.0 (20deg probe tilt) - 2191	HBBL-600-10000 SLAAHU16BC221222-1, 2025-Jan-16	EX3DV4 - SN7783, 2023-01-24	DAE4 Sn1724, 2024-03-28

Scan Setup

	Area Scan	Zoom Scan
Grid Extents [mm]	120.0 x 180.0	30.0 x 30.0 x 30.0
Grid Steps [mm]	15.0 x 15.0	6.0 x 6.0 x 1.5
Sensor Surface [mm]	3.0	1.4
Graded Grid	N/A	Yes
Grading Ratio	N/A	1.5
MAIA	N/A	N/A
Surface Detection	All points	All points
Scan Method	Measured	Measured

Measurement Results

	Area Scan	Zoom Scan
Date	2025-01-17, 13:05	2025-01-17, 13:17
psSAR1g [W/kg]	0.114	0.119
psSAR10g [W/kg]	0.073	0.073
Power Drift [dB]	0.02	0.03
Power Scaling	Disabled	Disabled
Scaling Factor [dB]		
TSL Correction	Positive only	Positive only
M2/M1 [%]		79.1
Dist 3dB Peak [mm]		13.7



Measurement Report for Lectrosonics, Inc. EDGE LEFT, 946.750MHz

Device under Test Properties

Model, Manufacturer	Dimensions [mm]	DUT Type
Lectrosonics, Inc.	150.0 x 48.0 x 18.0	Digital Wireless Water-Resistant Micro Transmitter

Exposure Conditions

Phantom Section, TSL	Position, Test Distance [mm]	Frequency [MHz], Channel Number	Conversion Factor	TSL Conductivity [S/m]	TSL Permittivity
Flat, HSL	EDGE LEFT, 0.00	946.750, 946800	9.05	0.906	40.2

Hardware Setup

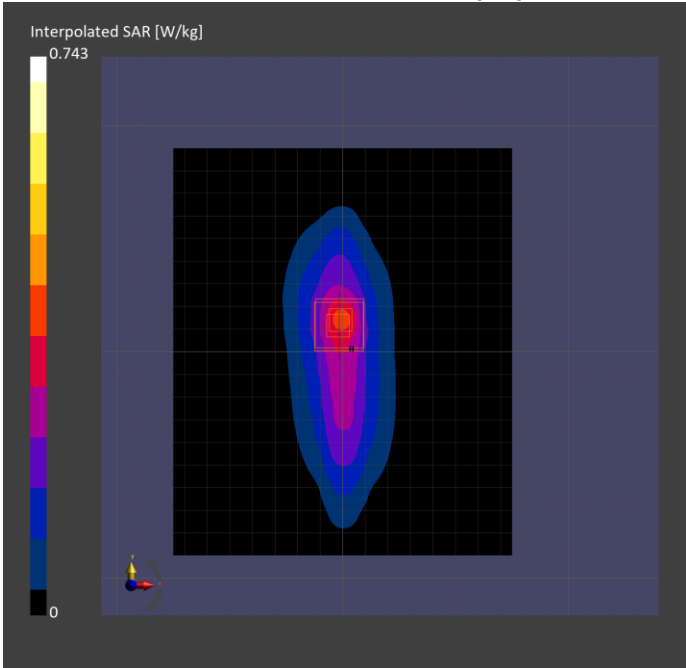
Phantom	TSL, Measured Date	Probe, Calibration Date	DAE, Calibration Date
ELI V8.0 (20deg probe tilt) - 2191	HBBL-600-10000 SLAAHU16BC221222-1, 2025-Jan-03	EX3DV4 - SN7783, 2024-04-12	DAE4 Sn1561, 2023-01-23

Scan Setup

	Area Scan	Zoom Scan
Grid Extents [mm]	150.0 x 180.0	30.0 x 30.0 x 30.0
Grid Steps [mm]	15.0 x 15.0	6.0 x 6.0 x 1.5
Sensor Surface [mm]	3.0	1.4
Graded Grid	N/A	Yes
Grading Ratio	N/A	1.5
MAIA	N/A	N/A
Surface Detection	All points	All points
Scan Method	Measured	Measured

Measurement Results

	Area Scan	Zoom Scan
Date	2025-01-03, 20:40	2025-01-03, 20:52
psSAR1g [W/kg]	0.347	0.366
psSAR10g [W/kg]	0.202	0.195
Power Drift [dB]	0.07	0.01
Power Scaling	Disabled	Disabled
Scaling Factor [dB]		
TSL Correction	Positive only	Positive only
M2/M1 [%]		74.8
Dist 3dB Peak [mm]		10.8



Measurement Report for Lectrosonics, Inc. EDGE LEFT, 953.025MHz

Device under Test Properties

Model, Manufacturer	Dimensions [mm]	DUT Type
Lectrosonics, Inc.	150.0 x 48.0 x 18.0	Digital Wireless Water-Resistant Micro Transmitter

Exposure Conditions

Phantom Section, TSL	Position, Test Distance [mm]	Frequency [MHz]	Conversion Factor	TSL Conductivity [S/m]	TSL Permittivity
Flat, HSL	EDGE LEFT, 0.00	953.025	9.05	0.912	39.6

Hardware Setup

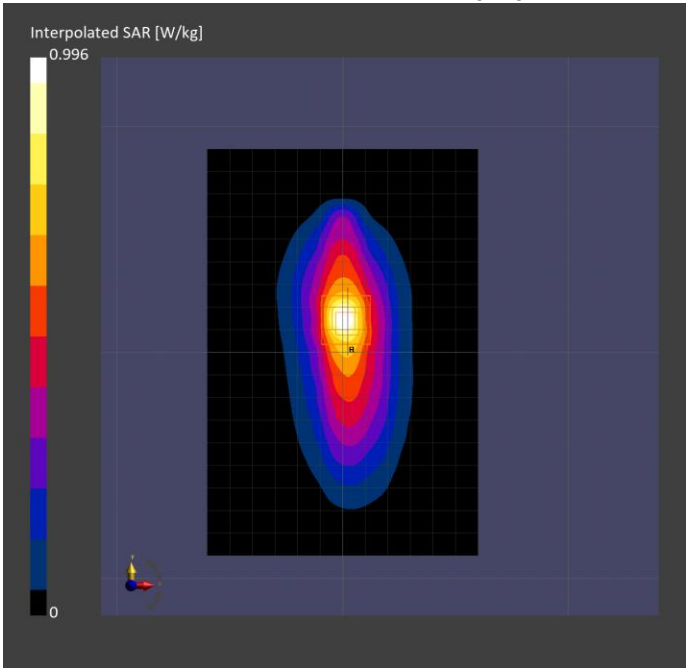
Phantom	TSL, Measured Date	Probe, Calibration Date	DAE, Calibration Date
ELI V8.0 (20deg probe tilt) - 2191	HBBL-600-10000 SLAAHU16BC221222-1, 2025-Jan-16	EX3DV4 - SN7783, 2023-01-24	DAE4 Sn1724, 2024-03-28

Scan Setup

	Area Scan	Zoom Scan
Grid Extents [mm]	120.0 x 180.0	30.0 x 30.0 x 30.0
Grid Steps [mm]	15.0 x 15.0	6.0 x 6.0 x 1.5
Sensor Surface [mm]	3.0	1.4
Graded Grid	N/A	Yes
Grading Ratio	N/A	1.5
MAIA	N/A	N/A
Surface Detection	All points	All points
Scan Method	Measured	Measured

Measurement Results

	Area Scan	Zoom Scan
Date	2025-01-16, 20:12	2025-01-16, 20:24
psSAR1g [W/kg]	0.471	0.492
psSAR10g [W/kg]	0.270	0.260
Power Drift [dB]	0.05	-0.00
Power Scaling	Disabled	Disabled
Scaling Factor [dB]		
TSL Correction	Positive only	Positive only
M2/M1 [%]		76.9
Dist 3dB Peak [mm]		9.7



Measurement Report for Lectrosonics, Inc. EDGE LEFT, 954.625MHz

Device under Test Properties

Model, Manufacturer	Dimensions [mm]	DUT Type
Lectrosonics, Inc.	150.0 x 48.0 x 18.0	Digital Wireless Water-Resistant Micro Transmitter

Exposure Conditions

Phantom Section, TSL	Position, Test Distance [mm]	Frequency [MHz]	Conversion Factor	TSL Conductivity [S/m]	TSL Permittivity
Flat, HSL	EDGE LEFT, 0.00	954.625	9.05	0.920	39.7

Hardware Setup

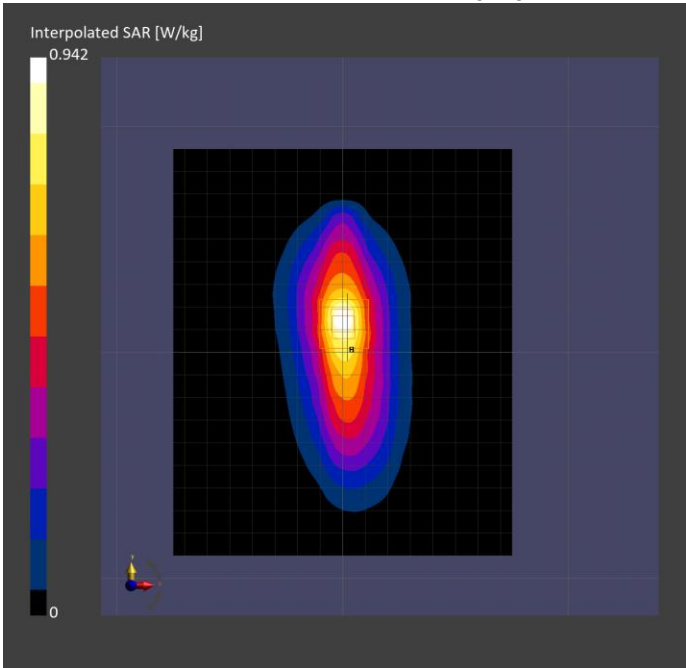
Phantom	TSL, Measured Date	Probe, Calibration Date	DAE, Calibration Date
ELI V8.0 (20deg probe tilt) - 2191	HBBL-600-10000 SLAAHU16BC221222-1, 2025-Jan-16	EX3DV4 - SN7783, 2024-04-12	DAE4 Sn1561, 2023-01-23

Scan Setup

	Area Scan	Zoom Scan
Grid Extents [mm]	150.0 x 180.0	30.0 x 30.0 x 30.0
Grid Steps [mm]	15.0 x 15.0	6.0 x 6.0 x 1.5
Sensor Surface [mm]	3.0	1.4
Graded Grid	N/A	Yes
Grading Ratio	N/A	1.5
MAIA	N/A	N/A
Surface Detection	All points	All points
Scan Method	Measured	Measured

Measurement Results

	Area Scan	Zoom Scan
Date	2025-01-06, 20:13	2025-01-06, 20:24
psSAR1g [W/kg]	0.428	0.462
psSAR10g [W/kg]	0.251	0.249
Power Drift [dB]	0.05	0.01
Power Scaling	Disabled	Disabled
Scaling Factor [dB]		
TSL Correction	Positive only	Positive only
M2/M1 [%]		74.3
Dist 3dB Peak [mm]		9.9



Measurement Report for Lectrosonics, Inc. EDGE LEFT, 956.225MHz

Device under Test Properties

Model, Manufacturer	Dimensions [mm]	DUT Type
Lectrosonics, Inc.	150.0 x 48.0 x 18.0	Digital Wireless Water-Resistant Micro Transmitter

Exposure Conditions

Phantom Section, TSL	Position, Test Distance [mm]	Frequency [MHz]	Conversion Factor	TSL Conductivity [S/m]	TSL Permittivity
Flat, HSL	EDGE LEFT, 0.00	956.225	9.05	0.913	39.6

Hardware Setup

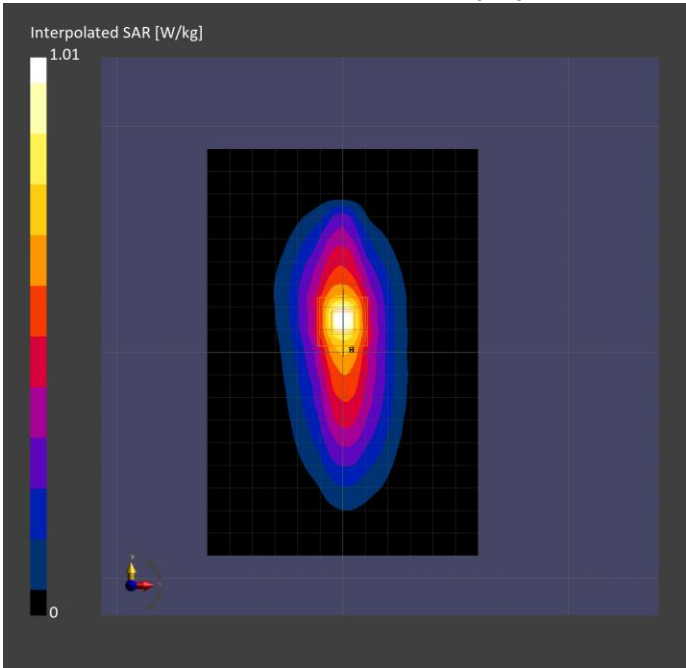
Phantom	TSL, Measured Date	Probe, Calibration Date	DAE, Calibration Date
ELI V8.0 (20deg probe tilt) - 2191	HBBL-600-10000 SLAAHU16BC221222-1, 2025-Jan-16	EX3DV4 - SN7783, 2023-01-24	DAE4 Sn1724, 2024-03-28

Scan Setup

	Area Scan	Zoom Scan
Grid Extents [mm]	120.0 x 180.0	30.0 x 30.0 x 30.0
Grid Steps [mm]	15.0 x 15.0	6.0 x 6.0 x 1.5
Sensor Surface [mm]	3.0	1.4
Graded Grid	N/A	Yes
Grading Ratio	N/A	1.5
MAIA	N/A	N/A
Surface Detection	All points	All points
Scan Method	Measured	Measured

Measurement Results

	Area Scan	Zoom Scan
Date	2025-01-16, 20:43	2025-01-16, 20:54
psSAR1g [W/kg]	0.492	0.498
psSAR10g [W/kg]	0.279	0.260
Power Drift [dB]	0.01	0.00
Power Scaling	Disabled	Disabled
Scaling Factor [dB]		
TSL Correction	Positive only	Positive only
M2/M1 [%]		75.5
Dist 3dB Peak [mm]		9.7



Measurement Report for Lectrosonics, Inc. EDGE LEFT, 956.475MHz

Device under Test Properties

Model, Manufacturer	Dimensions [mm]	DUT Type
Lectrosonics, Inc.	150.0 x 48.0 x 18.0	Digital Wireless Water-Resistant Micro Transmitter

Exposure Conditions

Phantom Section, TSL	Position, Test Distance [mm]	Frequency [MHz]	Conversion Factor	TSL Conductivity [S/m]	TSL Permittivity
Flat, HSL	EDGE LEFT, 0.00	956.475	9.05	0.913	39.6

Hardware Setup

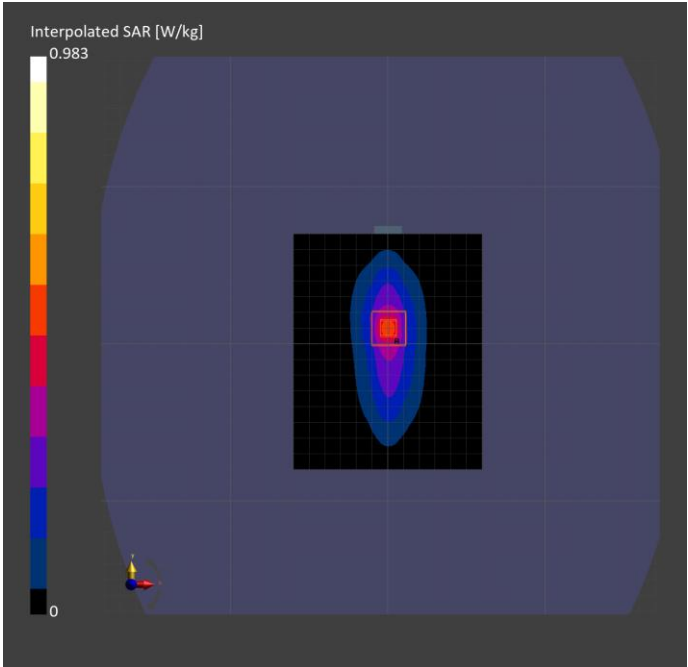
Phantom	TSL, Measured Date	Probe, Calibration Date	DAE, Calibration Date
ELI V8.0 (20deg probe tilt) - 2191	HBBL-600-10000 SLAAHU16BC221222-1, 2025-Jan-16	EX3DV4 - SN7783, 2023-01-24	DAE4 Sn1724, 2024-03-28

Scan Setup

	Area Scan	Zoom Scan
Grid Extents [mm]	120.0 x 150.0	30.0 x 30.0 x 30.0
Grid Steps [mm]	15.0 x 15.0	6.0 x 6.0 x 1.5
Sensor Surface [mm]	3.0	1.4
Graded Grid	N/A	Yes
Grading Ratio	N/A	1.5
MAIA	N/A	N/A
Surface Detection	All points	All points
Scan Method	Measured	Measured

Measurement Results

	Area Scan	Zoom Scan
Date	2025-01-17, 14:33	2025-01-17, 14:45
psSAR1g [W/kg]	0.468	0.462
psSAR10g [W/kg]	0.264	0.243
Power Drift [dB]	0.04	-0.00
Power Scaling	Disabled	Disabled
Scaling Factor [dB]		
TSL Correction	Positive only	Positive only
M2/M1 [%]		72.2
Dist 3dB Peak [mm]		9.7



Measurement Report for Lectrosonics, Inc. EDGE LEFT, 958.150MHz

Device under Test Properties

Model, Manufacturer	Dimensions [mm]	DUT Type
Lectrosonics, Inc.	150.0 x 48.0 x 18.0	Digital Wireless Water-Resistant Micro Transmitter

Exposure Conditions

Phantom Section, TSL	Position, Test Distance [mm]	Frequency [MHz]	Conversion Factor	TSL Conductivity [S/m]	TSL Permittivity
Flat, HSL	EDGE LEFT, 0.00	958.150	9.05	0.913	39.6

Hardware Setup

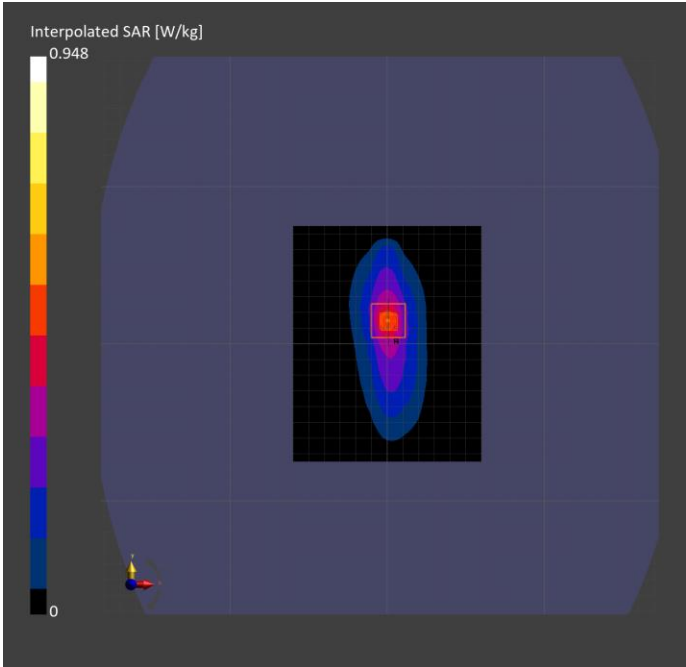
Phantom	TSL, Measured Date	Probe, Calibration Date	DAE, Calibration Date
ELI V8.0 (20deg probe tilt) - 2191	HBBL-600-10000 SLAAHU16BC221222-1, 2025-Jan-16	EX3DV4 - SN7783, 2023-01-24	DAE4 Sn1724, 2024-03-28

Scan Setup

	Area Scan	Zoom Scan
Grid Extents [mm]	120.0 x 150.0	30.0 x 30.0 x 30.0
Grid Steps [mm]	15.0 x 15.0	6.0 x 6.0 x 1.5
Sensor Surface [mm]	3.0	1.4
Graded Grid	N/A	Yes
Grading Ratio	N/A	1.5
MAIA	N/A	N/A
Surface Detection	All points	All points
Scan Method	Measured	Measured

Measurement Results

	Area Scan	Zoom Scan
Date	2025-01-16, 22:05	2025-01-16, 22:16
psSAR1g [W/kg]	0.471	0.470
psSAR10g [W/kg]	0.266	0.247
Power Drift [dB]	-0.05	-0.02
Power Scaling	Disabled	Disabled
Scaling Factor [dB]		
TSL Correction	Positive only	Positive only
M2/M1 [%]		77.5
Dist 3dB Peak [mm]		9.9



Measurement Report for Lectrosonics, Inc. EDGE LEFT, 959.825MHz

Device under Test Properties

Model, Manufacturer	Dimensions [mm]	DUT Type
Lectrosonics, Inc.	150.0 x 48.0 x 18.0	Digital Wireless Water-Resistant Micro Transmitter

Exposure Conditions

Phantom Section, TSL	Position, Test Distance [mm]	Frequency [MHz]	Conversion Factor	TSL Conductivity [S/m]	TSL Permittivity
Flat, HSL	EDGE LEFT, 0.00	959.825	9.05	0.913	39.6

Hardware Setup

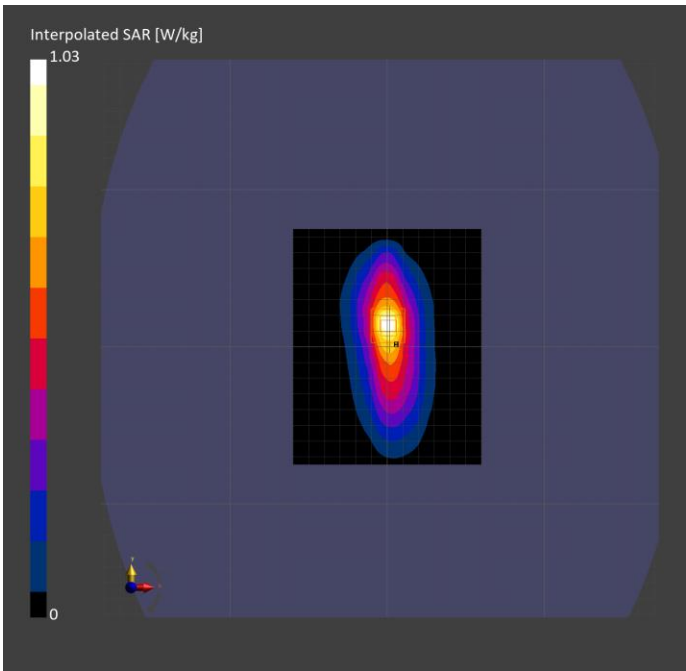
Phantom	TSL, Measured Date	Probe, Calibration Date	DAE, Calibration Date
ELI V8.0 (20deg probe tilt) - 2191	HBBL-600-10000 SLAAHU16BC221222-1, 2025-Jan-16	EX3DV4 - SN7783, 2023-01-24	DAE4 Sn1724, 2024-03-28

Scan Setup

	Area Scan	Zoom Scan
Grid Extents [mm]	120.0 x 150.0	30.0 x 30.0 x 30.0
Grid Steps [mm]	15.0 x 15.0	6.0 x 6.0 x 1.5
Sensor Surface [mm]	3.0	1.4
Graded Grid	N/A	Yes
Grading Ratio	N/A	1.5
MAIA	N/A	N/A
Surface Detection	All points	All points
Scan Method	Measured	Measured

Measurement Results

	Area Scan	Zoom Scan
Date	2025-01-17, 15:07	2025-01-17, 15:19
psSAR1g [W/kg]	0.439	0.471
psSAR10g [W/kg]	0.251	0.243
Power Drift [dB]	0.05	0.01
Power Scaling	Disabled	Disabled
Scaling Factor [dB]		
TSL Correction	Positive only	Positive only
M2/M1 [%]		72.1
Dist 3dB Peak [mm]		9.2



Measurement Report for Lectrosonics, Inc. EDGE BOTTOM, 946.750MHz

Device under Test Properties

Model, Manufacturer	Dimensions [mm]	DUT Type
Lectrosonics, Inc.	150.0 x 48.0 x 18.0	Digital Wireless Water-Resistant Micro Transmitter

Exposure Conditions

Phantom Section, TSL	Position, Test Distance [mm]	Frequency [MHz]	Conversion Factor	TSL Conductivity [S/m]	TSL Permittivity
Flat, HSL	EDGE BOTTOM, 0.00	946.750	9.05	0.906	40.2

Hardware Setup

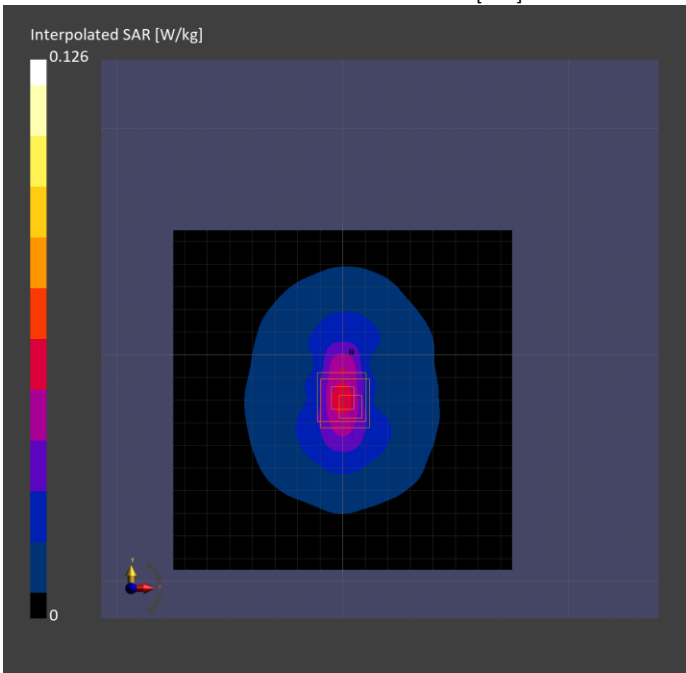
Phantom	TSL, Measured Date	Probe, Calibration Date	DAE, Calibration Date
ELI V8.0 (20deg probe tilt) - 2191	HBBL-600-10000 SLAAHU16BC221222-1, 2025-Jan-03	EX3DV4 - SN7783, 2024-04-12	DAE4 Sn1561, 2023-01-23

Scan Setup

	Area Scan	Zoom Scan
Grid Extents [mm]	150.0 x 150.0	30.0 x 30.0 x 30.0
Grid Steps [mm]	15.0 x 15.0	6.0 x 6.0 x 1.5
Sensor Surface [mm]	3.0	1.4
Graded Grid	N/A	Yes
Grading Ratio	N/A	1.5
MAIA	Y	Y
Surface Detection	All points	All points
Scan Method	Measured	Measured

Measurement Results

	Area Scan	Zoom Scan
Date	2025-01-03, 21:46	2025-01-03, 21:57
psSAR1g [W/kg]	0.041	0.044
psSAR10g [W/kg]	0.024	0.022
Power Drift [dB]	0.17	0.04
Power Scaling	Disabled	Disabled
Scaling Factor [dB]		
TSL Correction	Positive only	Positive only
M2/M1 [%]		58.5
Dist 3dB Peak [mm]		7.3



Measurement Report for Lectrosonics, Inc. EDGE BOTTOM, 954.625MHz

Device under Test Properties

Model, Manufacturer	Dimensions [mm]	DUT Type
Lectrosonics, Inc.	150.0 x 48.0 x 18.0	Digital Wireless Water-Resistant Micro Transmitter

Exposure Conditions

Phantom Section, TSL	Position, Test Distance [mm]	Frequency [MHz]	Conversion Factor	TSL Conductivity [S/m]	TSL Permittivity
Flat, HSL	EDGE BOTTOM, 0.00	954.625	9.05	0.920	39.7

Hardware Setup

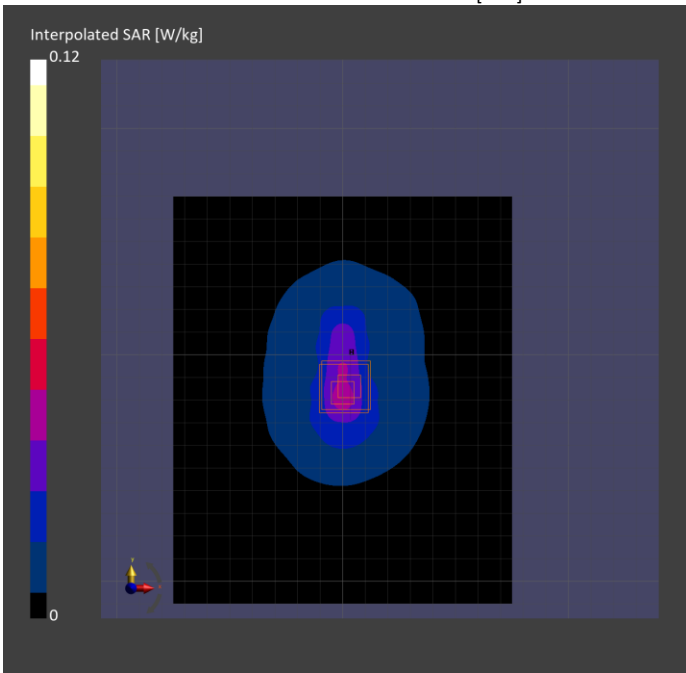
Phantom	TSL, Measured Date	Probe, Calibration Date	DAE, Calibration Date
ELI V8.0 (20deg probe tilt) - 2191	HBBL-600-10000 SLAAHU16BC221222-1, 2025-Jan-06	EX3DV4 - SN7783, 2024-04-12	DAE4 Sn1561, 2023-01-23

Scan Setup

	Area Scan	Zoom Scan
Grid Extents [mm]	150.0 x 180.0	30.0 x 30.0 x 30.0
Grid Steps [mm]	15.0 x 15.0	6.0 x 6.0 x 1.5
Sensor Surface [mm]	3.0	1.4
Graded Grid	N/A	Yes
Grading Ratio	N/A	1.5
MAIA	Y	Y
Surface Detection	All points	All points
Scan Method	Measured	Measured

Measurement Results

	Area Scan	Zoom Scan
Date	2025-01-06, 21:43	2025-01-06, 21:54
psSAR1g [W/kg]	0.039	0.044
psSAR10g [W/kg]	0.023	0.022
Power Drift [dB]	-0.16	0.03
Power Scaling	Disabled	Disabled
Scaling Factor [dB]		
TSL Correction	Positive only	Positive only
M2/M1 [%]		62.4
Dist 3dB Peak [mm]		7.2



Measurement Report for Lectrosonics, Inc. EDGE BOTTOM, 958.150MHz

Device under Test Properties

Model, Manufacturer	Dimensions [mm]	DUT Type
Lectrosonics, Inc.	150.0 x 48.0 x 18.0	Digital Wireless Water-Resistant Micro Transmitter

Exposure Conditions

Phantom Section, TSL	Position, Test Distance [mm]	Frequency [MHz]	Conversion Factor	TSL Conductivity [S/m]	TSL Permittivity
Flat, HSL	EDGE BOTTOM, 0.00	958.150	9.05	0.913	39.6

Hardware Setup

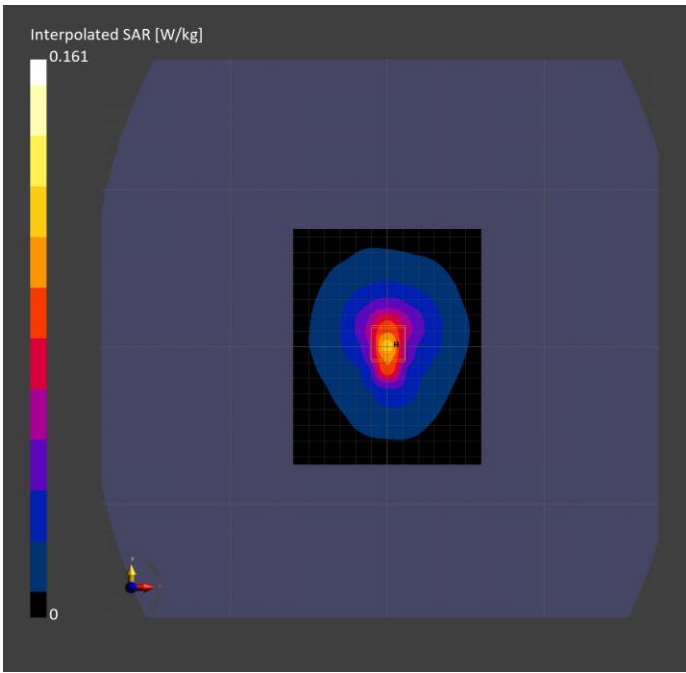
Phantom	TSL, Measured Date	Probe, Calibration Date	DAE, Calibration Date
ELI V8.0 (20deg probe tilt) - 2191	HBBL-600-10000 SLAAHU16BC221222-1, 2025-Jan-16	EX3DV4 - SN7783, 2023-01-24	DAE4 Sn1724, 2024-03-28

Scan Setup

	Area Scan	Zoom Scan
Grid Extents [mm]	120.0 x 150.0	30.0 x 30.0 x 30.0
Grid Steps [mm]	15.0 x 15.0	6.0 x 6.0 x 1.5
Sensor Surface [mm]	3.0	1.4
Graded Grid	N/A	Yes
Grading Ratio	N/A	1.5
MAIA	Y	Y
Surface Detection	All points	All points
Scan Method	Measured	Measured

Measurement Results

	Area Scan	Zoom Scan
Date	2025-01-17, 14:00	2025-01-17, 14:12
psSAR1g [W/kg]	0.062	0.065
psSAR10g [W/kg]	0.036	0.034
Power Drift [dB]	0.02	-0.01
Power Scaling	Disabled	Disabled
Scaling Factor [dB]		
TSL Correction	Positive only	Positive only
M2/M1 [%]		65.9
Dist 3dB Peak [mm]		7.3



Measurement Report for Lectrosonics, Inc. EDGE TOP 946.750MHz

Device under Test Properties

Model, Manufacturer	Dimensions [mm]	DUT Type
Lectrosonics, Inc.	150.0 x 48.0 x 18.0	Digital Wireless Water-Resistant Micro Transmitter

Exposure Conditions

Phantom Section, TSL	Position, Test Distance [mm]	Frequency [MHz]	Conversion Factor	TSL Conductivity [S/m]	TSL Permittivity
Flat, HSL	EDGE TOP, 0.00	946.750	9.05	0.906	40.2

Hardware Setup

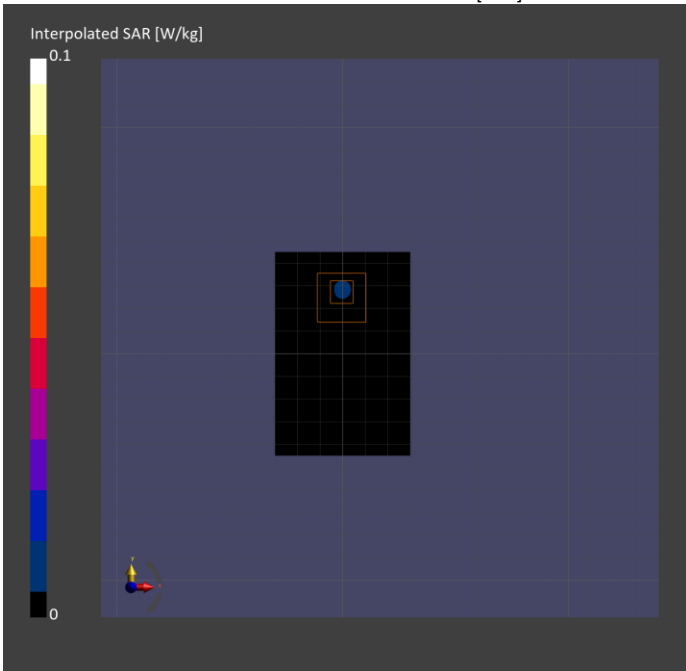
Phantom	TSL, Measured Date	Probe, Calibration Date	DAE, Calibration Date
ELI V8.0 (20deg probe tilt) - 2191	HBBL-600-10000 SLAAHU16BC221222-1, 2025-Jan-03	EX3DV4 - SN7783, 2024-04-12	DAE4 Sn1561, 2023-01-23

Scan Setup

	Area Scan	Zoom Scan
Grid Extents [mm]	60.0 x 90.0	x x
Grid Steps [mm]	15.0 x 15.0	x x
Sensor Surface [mm]	3.0	
Graded Grid	N/A	
Grading Ratio	N/A	
MAIA	Y	
Surface Detection	All points	
Scan Method	Measured	

Measurement Results

	Area Scan	Zoom Scan
Date	2025-01-03, 22:08	
psSAR1g [W/kg]	0.008	
psSAR10g [W/kg]	0.004	
Power Drift [dB]	0.55	
Power Scaling	Disabled	
Scaling Factor [dB]		
TSL Correction	Positive only	
M2/M1 [%]		
Dist 3dB Peak [mm]		



Measurement Report for Lectrosonics, Inc. EDGE TOP, 954.625MHz

Device under Test Properties

Model, Manufacturer	Dimensions [mm]	DUT Type
Lectrosonics, Inc.	150.0 x 48.0 x 18.0	Digital Wireless Water-Resistant Micro Transmitter

Exposure Conditions

Phantom Section, TSL	Position, Test Distance [mm]	Frequency [MHz]	Conversion Factor	TSL Conductivity [S/m]	TSL Permittivity
Flat, HSL	EDGE TOP, 0.00	954.625	9.05	0.920	39.7

Hardware Setup

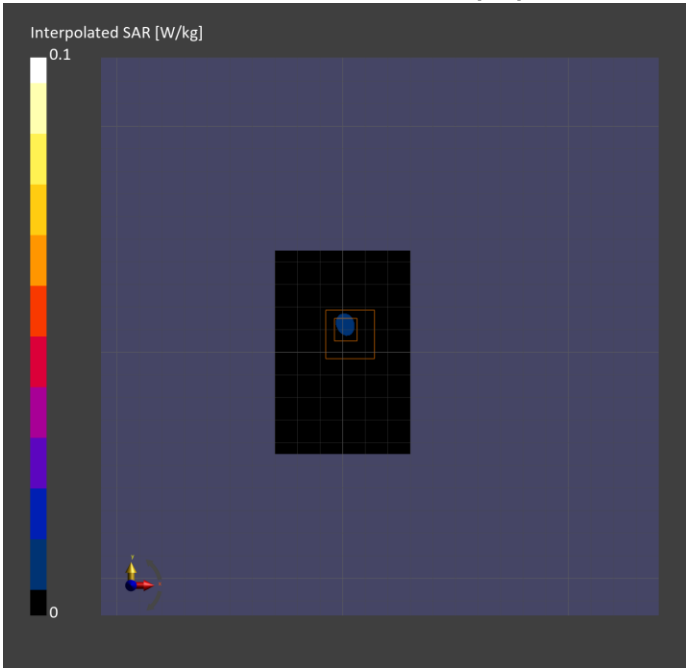
Phantom	TSL, Measured Date	Probe, Calibration Date	DAE, Calibration Date
ELI V8.0 (20deg probe tilt) - 2191	HBBL-600-10000 SLAAHU16BC221222-1, 2025-Jan-06	EX3DV4 - SN7783, 2024-04-12	DAE4 Sn1561, 2023-01-23

Scan Setup

	Area Scan	Zoom Scan
Grid Extents [mm]	60.0 x 90.0	x x
Grid Steps [mm]	15.0 x 15.0	x x
Sensor Surface [mm]	3.0	
Graded Grid	N/A	
Grading Ratio	N/A	
MAIA	Y	
Surface Detection	All points	
Scan Method	Measured	

Measurement Results

	Area Scan	Zoom Scan
Date	2025-01-06, 22:04	
psSAR1g [W/kg]	0.008	
psSAR10g [W/kg]	0.004	
Power Drift [dB]	0.53	
Power Scaling	Disabled	
Scaling Factor [dB]		
TSL Correction	Positive only	
M2/M1 [%]		
Dist 3dB Peak [mm]		



Measurement Report for Lectrosonics, Inc. EDGE TOP, 958.150MHz

Device under Test Properties

Model, Manufacturer	Dimensions [mm]	DUT Type
Lectrosonics, Inc.	150.0 x 48.0 x 18.0	Digital Wireless Water-Resistant Micro Transmitter

Exposure Conditions

Phantom Section, TSL	Position, Test Distance [mm]	Frequency [MHz], Channel Number	Conversion Factor	TSL Conductivity [S/m]	TSL Permittivity
Flat, HSL	EDGE TOP, 0.00	958.150	9.05	0.913	39.6

Hardware Setup

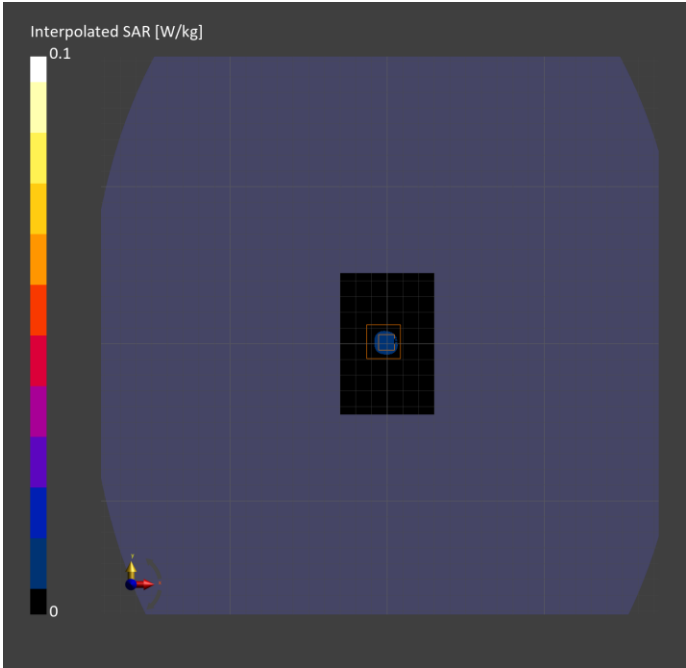
Phantom	TSL, Measured Date	Probe, Calibration Date	DAE, Calibration Date
ELI V8.0 (20deg probe tilt) - 2191	HBBL-600-10000 SLAAHU16BC221222-1, 2025-Jan-16	EX3DV4 - SN7783, 2023-01-24	DAE4 Sn1724, 2024-03-28

Scan Setup

	Area Scan	Zoom Scan
Grid Extents [mm]	60.0 x 90.0	30.0 x 30.0 x 30.0
Grid Steps [mm]	15.0 x 15.0	2.1 x 2.1 x 1.2
Sensor Surface [mm]	3.0	1.4
Graded Grid	N/A	Yes
Grading Ratio	N/A	1.2
MAIA	Y	Y
Surface Detection	All points	All points
Scan Method	Measured	Measured

Measurement Results

	Area Scan	Zoom Scan
Date	2025-01-17, 13:29	Unknown
psSAR1g [W/kg]	0.011	0
psSAR10g [W/kg]	0.006	0
Power Drift [dB]	0.56	N/A
Power Scaling	Disabled	Disabled
Scaling Factor [dB]		
TSL Correction	Positive only	Positive only
M2/M1 [%]		N/A
Dist 3dB Peak [mm]		N/A



Measurement Report for Lectrosonics, Inc. EDGE LEFT (Repeat), 953.025MHz

Device under Test Properties

Model, Manufacturer	Dimensions [mm]	DUT Type
Lectrosonics, Inc.	150.0 x 48.0 x 18.0	Digital Wireless Water-Resistant Micro Transmitter

Exposure Conditions

Phantom Section, TSL	Position, Test Distance [mm]	Frequency [MHz]	Conversion Factor	TSL Conductivity [S/m]	TSL Permittivity
Flat, HSL	EDGE LEFT, 0.00	953.025	9.05	0.912	39.6

Hardware Setup

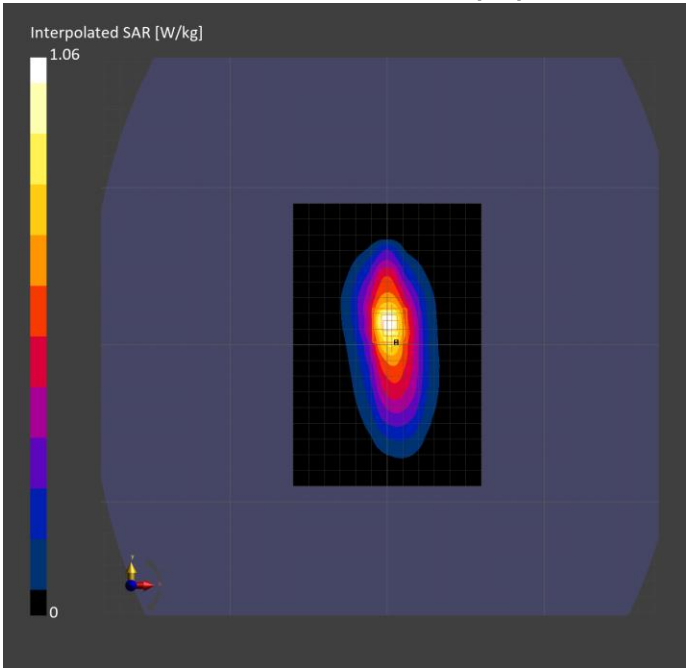
Phantom	TSL, Measured Date	Probe, Calibration Date	DAE, Calibration Date
ELI V8.0 (20deg probe tilt) - 2191	HBBL-600-10000 SLAAHU16BC221222-1, 2025-Jan-16	EX3DV4 - SN7783, 2023-01-24	DAE4 Sn1724, 2024-03-28

Scan Setup

	Area Scan	Zoom Scan
Grid Extents [mm]	120.0 x 180.0	30.0 x 30.0 x 30.0
Grid Steps [mm]	15.0 x 15.0	6.0 x 6.0 x 1.5
Sensor Surface [mm]	3.0	1.4
Graded Grid	N/A	Yes
Grading Ratio	N/A	1.5
MAIA	N/A	N/A
Surface Detection	All points	All points
Scan Method	Measured	Measured

Measurement Results

	Area Scan	Zoom Scan
Date	2025-01-17, 15:38	2025-01-17, 15:50
psSAR1g [W/kg]	0.440	0.498
psSAR10g [W/kg]	0.257	0.257
Power Drift [dB]	0.05	0.02
Power Scaling	Disabled	Disabled
Scaling Factor [dB]		
TSL Correction	Positive only	Positive only
M2/M1 [%]		72.5
Dist 3dB Peak [mm]		9.2



Measurement Report for Device, EDGE LEFT (w/ Belt Clip), 953.025MHz

Device under Test Properties

Model, Manufacturer	Dimensions [mm]	DUT Type
Lectrosonics, Inc.	150.0 x 48.0 x 18.0	Digital Wireless Water-Resistant Micro Transmitter

Exposure Conditions

Phantom Section, TSL	Position, Test Distance [mm]	Frequency [MHz]	Conversion Factor	TSL Conductivity [S/m]	TSL Permittivity
Flat, HSL	EDGE LEFT, 0.00	953.025	9.05	0.912	39.6

Hardware Setup

Phantom	TSL, Measured Date	Probe, Calibration Date	DAE, Calibration Date
ELI V8.0 (20deg probe tilt) - 2191	HBBL-600-10000 SLAAHU16BC221222-1, 2025-Jan-16	EX3DV4 - SN7783, 2023-01-24	DAE4 Sn1724, 2024-03-28

Scan Setup

	Area Scan	Zoom Scan
Grid Extents [mm]	120.0 x 180.0	30.0 x 30.0 x 30.0
Grid Steps [mm]	15.0 x 15.0	6.0 x 6.0 x 1.5
Sensor Surface [mm]	3.0	1.4
Graded Grid	N/A	Yes
Grading Ratio	N/ssA	1.5
MAIA	N/A	N/A
Surface Detection	All points	All points
Scan Method	Measured	Measured

Measurement Results

	Area Scan	Zoom Scan
Date	2025-01-16, 22:54	2025-01-16, 23:07
psSAR1g [W/kg]	0.312	0.330
psSAR10g [W/kg]	0.202	0.205
Power Drift [dB]	-0.03	-0.01
Power Scaling	Disabled	Disabled
Scaling Factor [dB]		
TSL Correction	Positive only	Positive only
M2/M1 [%]		85.9
Dist 3dB Peak [mm]		13.5

