

13 Duty Cycle

13.1 Duty Cycle

Base Unit: $1.000\text{ms} \times 4 \times 10 / 100 \text{ ms} = 40\%$
 Handset Unit: $1.000\text{ms} \times 1 \times 10 / 100 \text{ ms} = 10\%$

13.2 Corrected Conducted Output Power

Base Unit			
Channel Plan	Conducted Output Power (dBm)	Duty cycle	Corrected Conducted Output Power (mW)
Low Channel	14.50	40%	11.27
Middle Channel	14.33	40%	10.84
High Channel	13.33	40%	8.612
Handset Unit			
Low Channel	17.17	10%	5.212
Middle Channel	17.50	10%	5.623
High Channel	18.50	10%	7.079

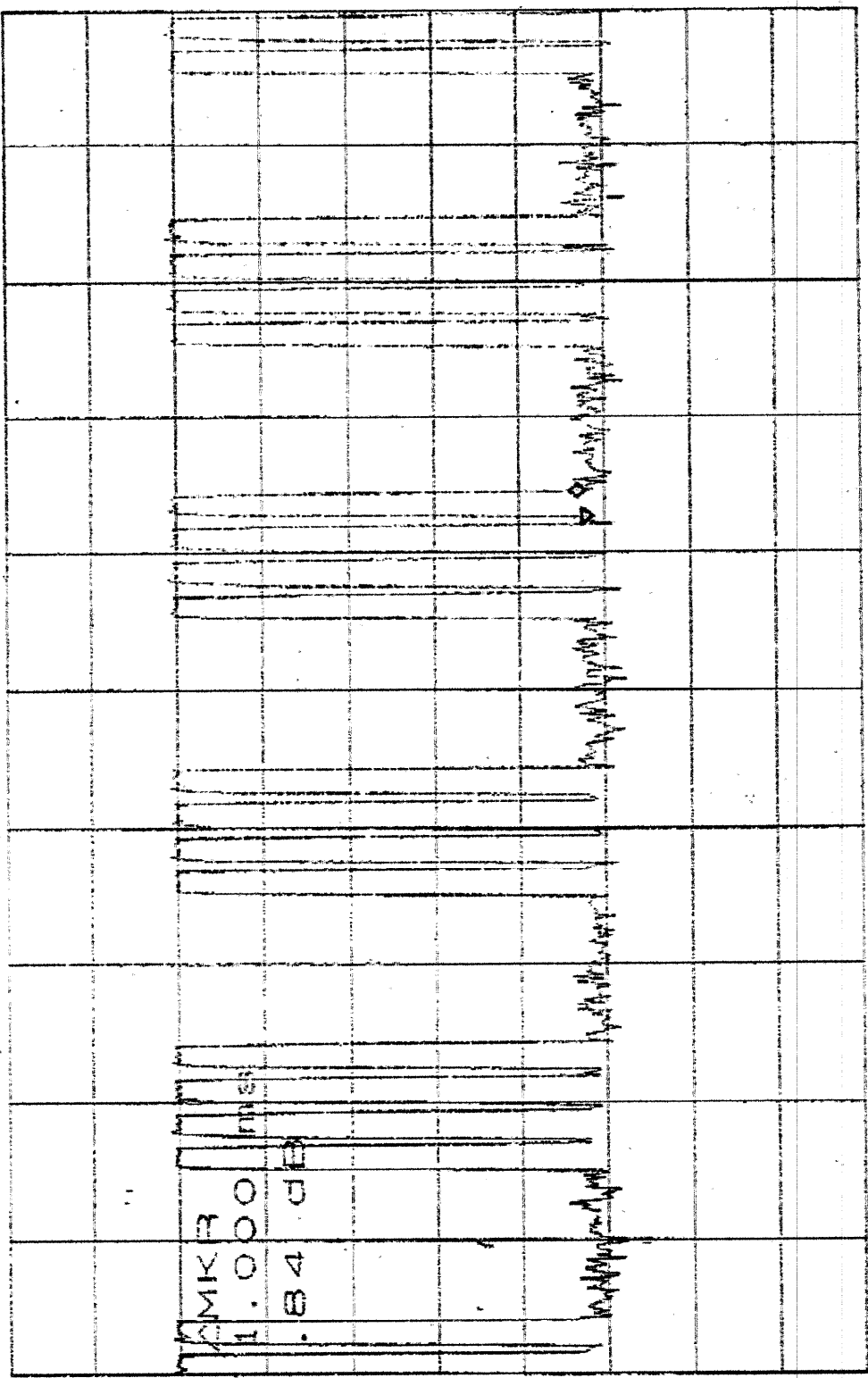
13.3 Duty Cycle Plot

Please see Appendix 6 and Appendix 8 for details.

Appendix 7: Plotted Data for Duty Cycle

5052

ATTEN 10dB ΔMKR .84dB
PL 92.0dBμV 10dB/ 1.000ms



D S A

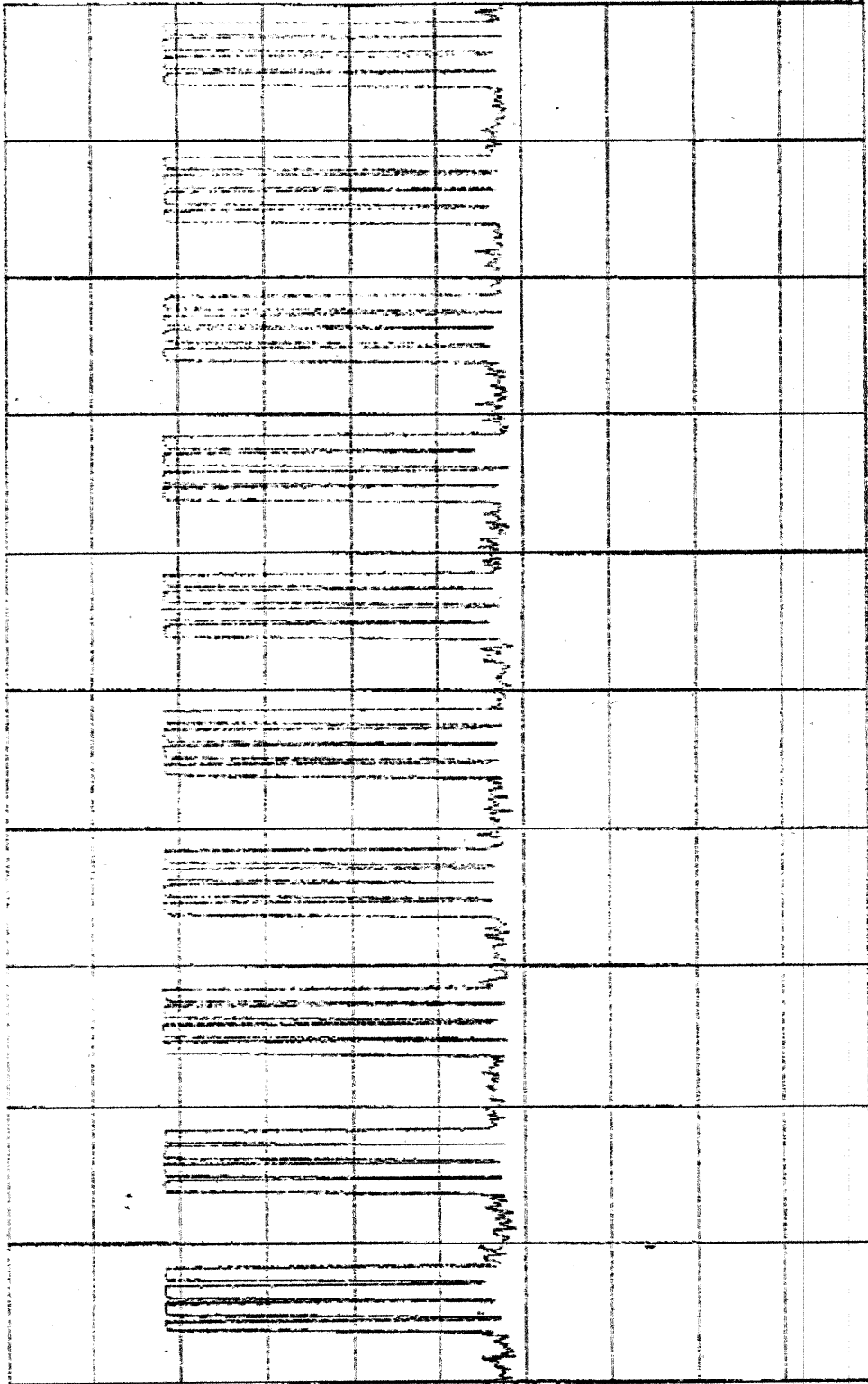
CENTER 2.404583333GHZ SPAN 0HZ
*RBW 100KHZ *VBW 100KHZ *SWP 50.0ms

FM:TECOM

1/6

base

ATTEN: 10dB
PL: 52.0dBμV 10dB/

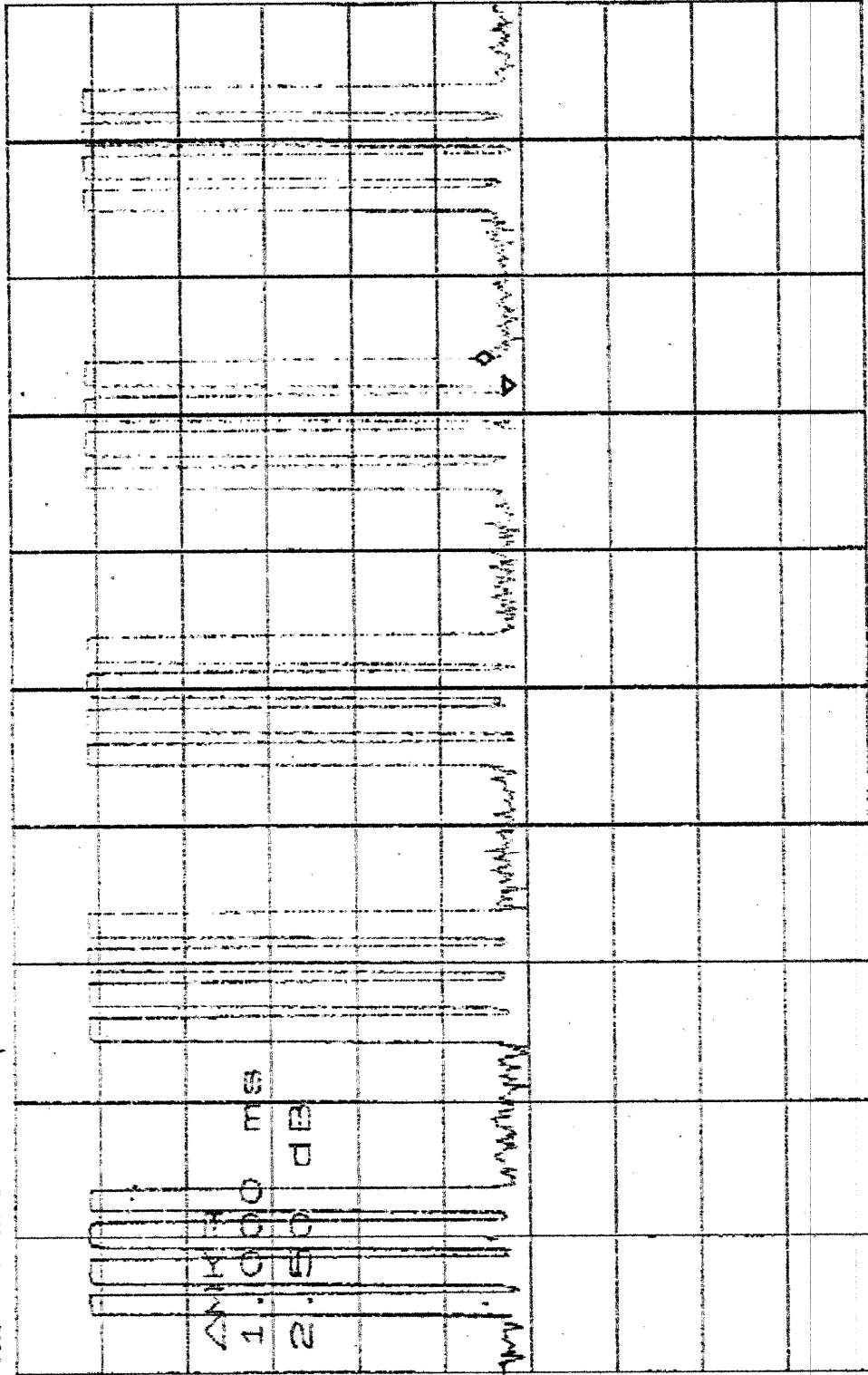


50

CENTER 2.404583333GHz SPAN 0Hz
 *RBW 1.0MHz *VBW 1.0MHz *SMP 100ms

base

ATTEN 10dB ΔMKR 2.50dB
RL 92.0dBμV 1.000ms
10dB/

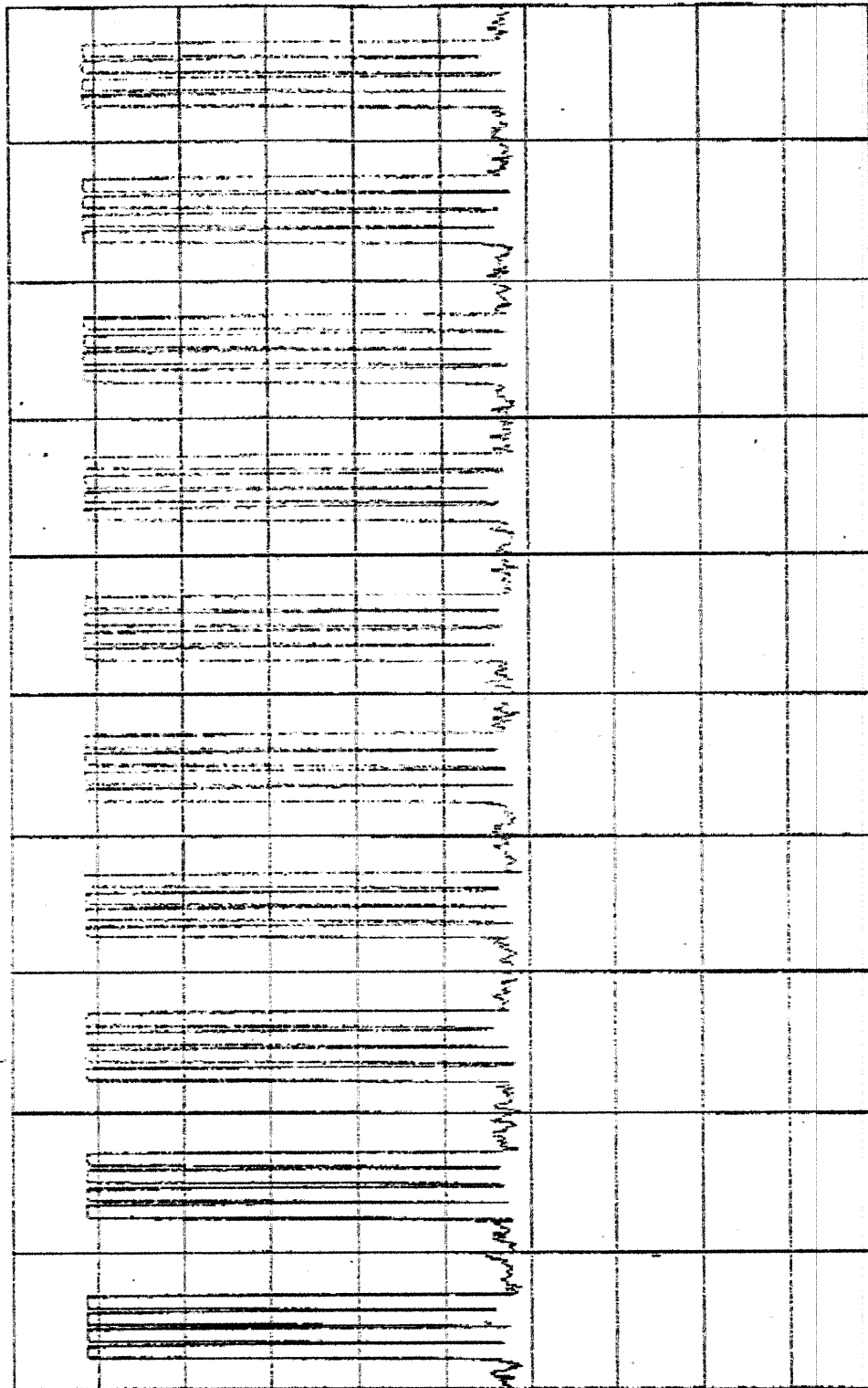


DS

CENTER 2.437415000GHZ SPAN 0HZ
*RBW 1.0MHZ *VBW 1.0MHZ *SFP 50.0MS

base

ATTEN 10DB
PL 92.0DBμV 10DB/

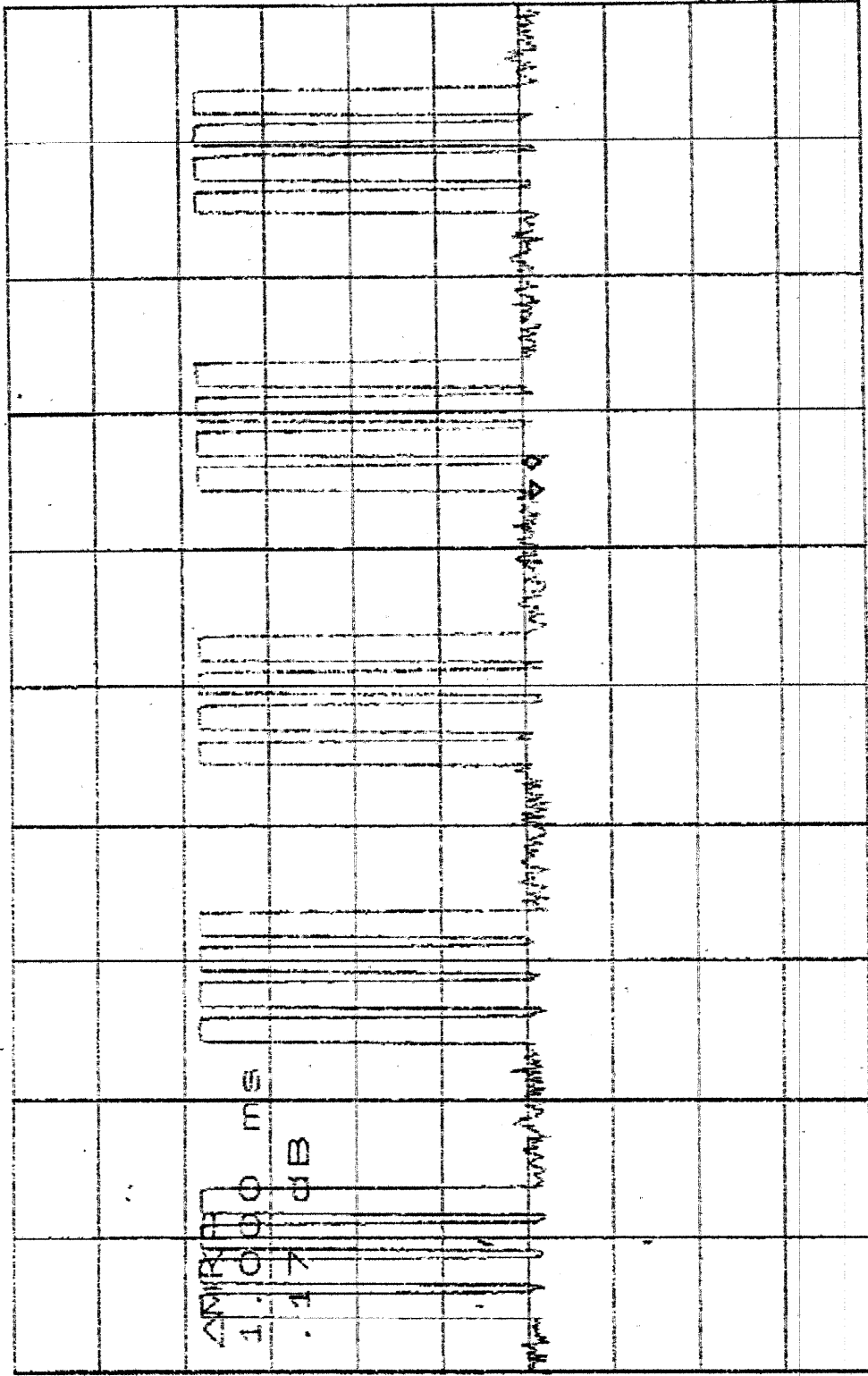


CENTER 2.4374150000GHZ
 *RBW 1.0MHZ *VBW 1.0MHZ
 SPAN 0HZ *SWP 100MS

2/6

Base

ATTEN 10dB ΔMKR .17dB
RL 97.0dBμV 10dB/ 1.000ms



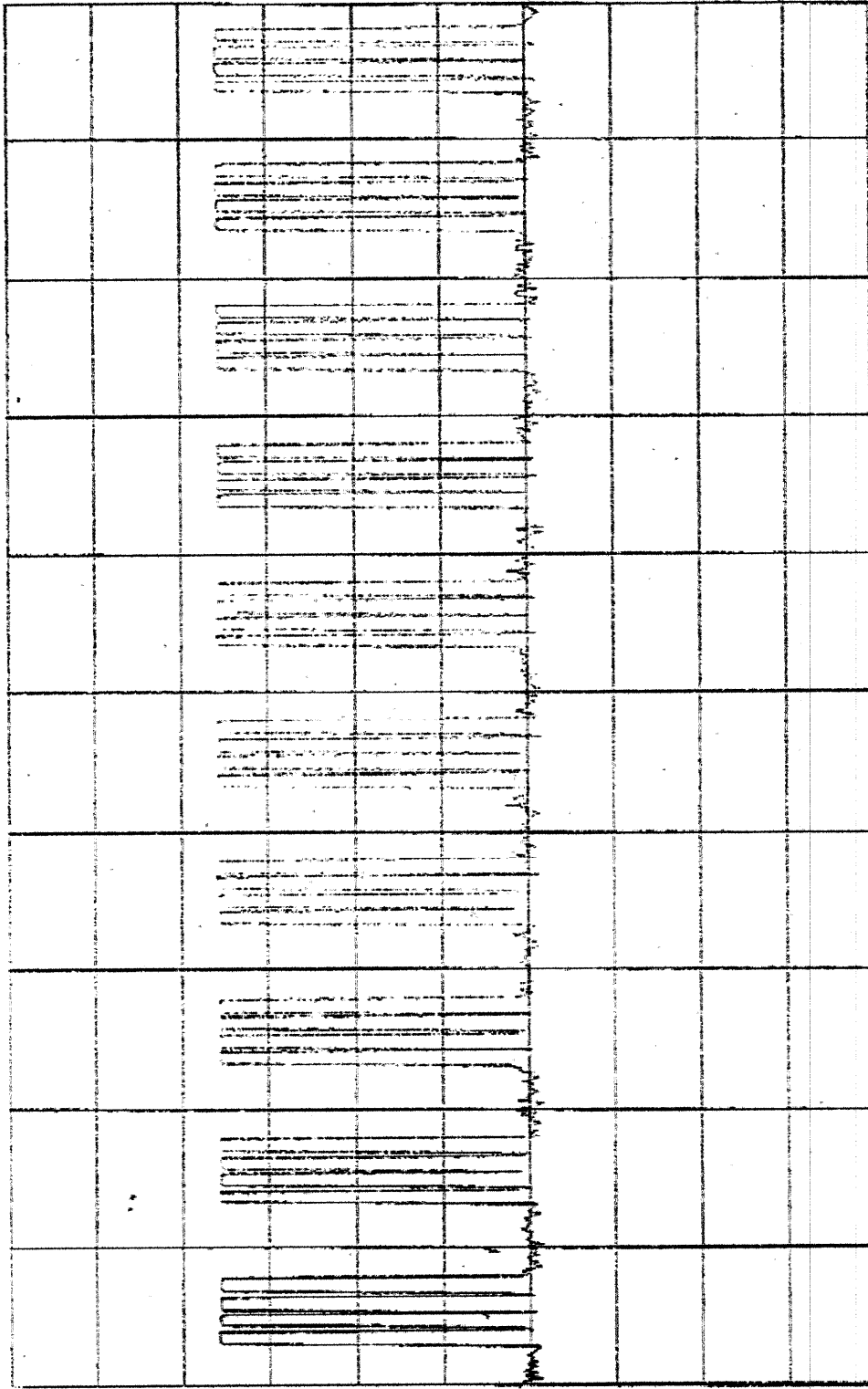
CENTER 2.479800000GHZ SPAN 0HZ
*RBW 1.0MHZ VBW 1.0MHZ SWP 50.0ms

Base

ATTEN 10dB

RL -10.0dBm

10dB/



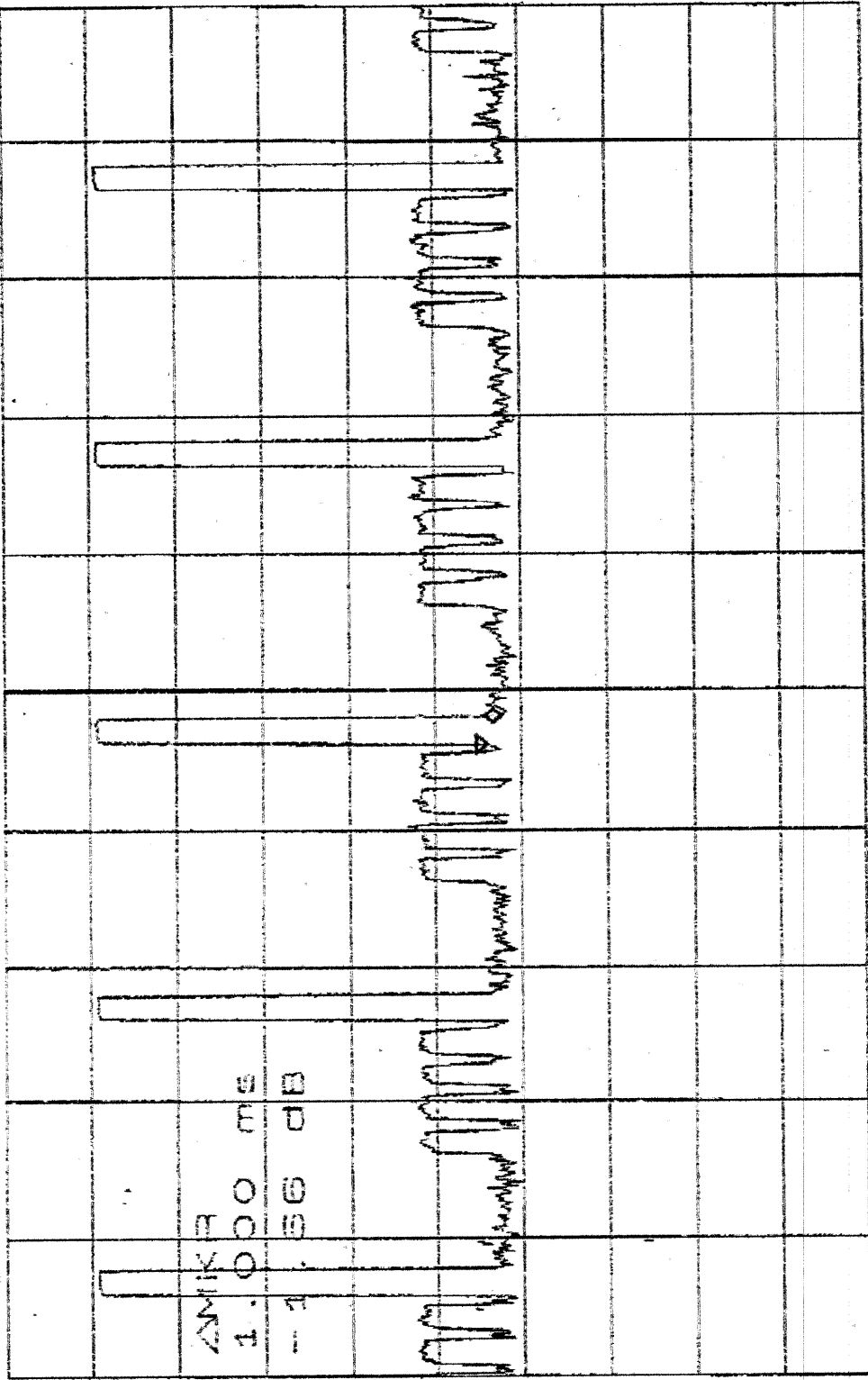
DS

CENTER 2.479800000GHZ SPAN 0HZ
 RBW 1.0MHZ VBW 1.0MHZ SWP 100MS

3/6

Flawless

ATTEN 10dB ΔMKR -1.66dB
PL 92.0dBμV 10dB/ 1.000ms



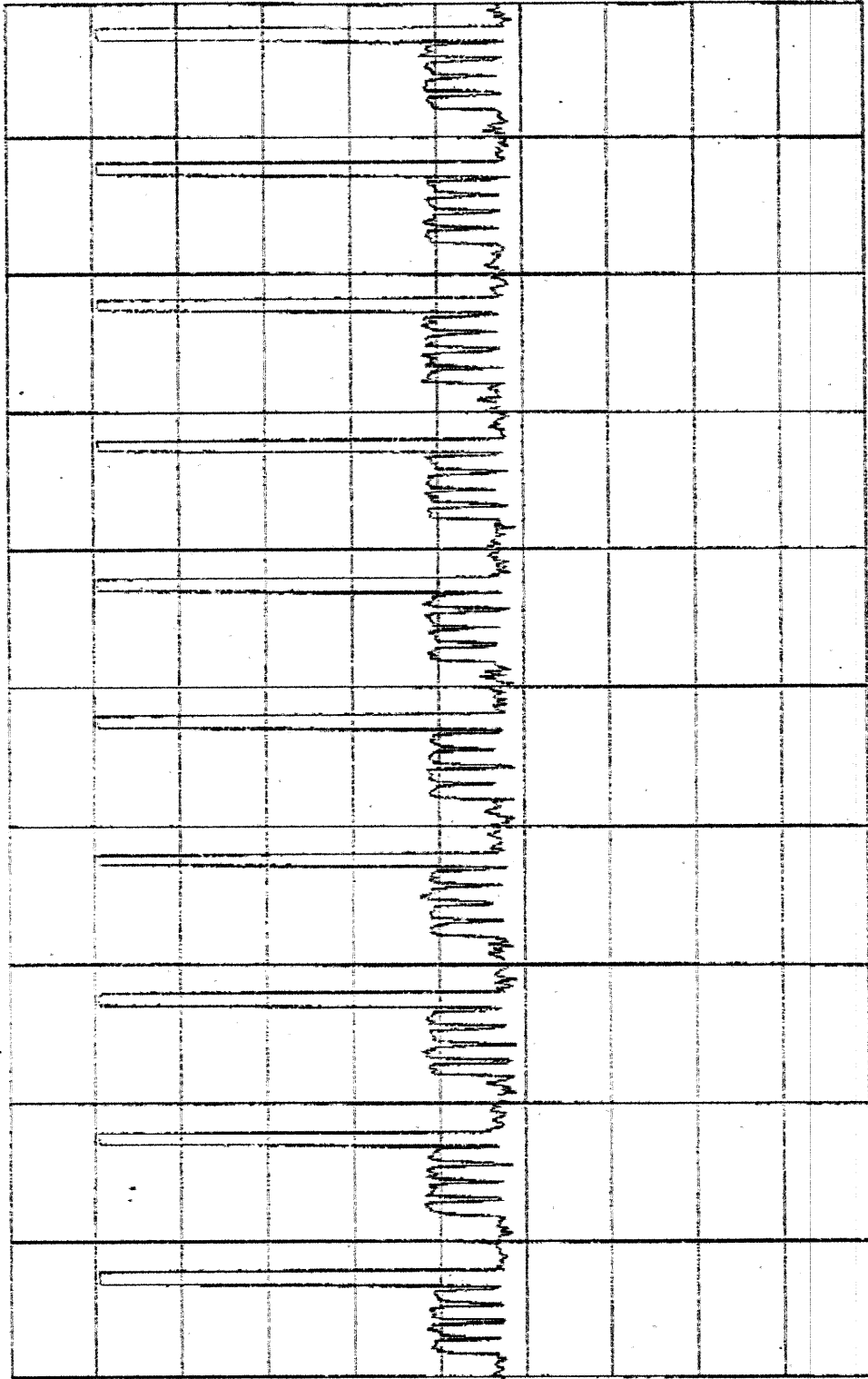
ΔMKR
1.000 ms
-1.66 dB

DS

CENTER 2.404733336GHZ SPAN 0HZ
*RBW 1.0MHZ *VBW 1.0MHZ *SWP 50.0MS

Handset

ATTEN 10dB
RL 92.0dBµV 10dB/



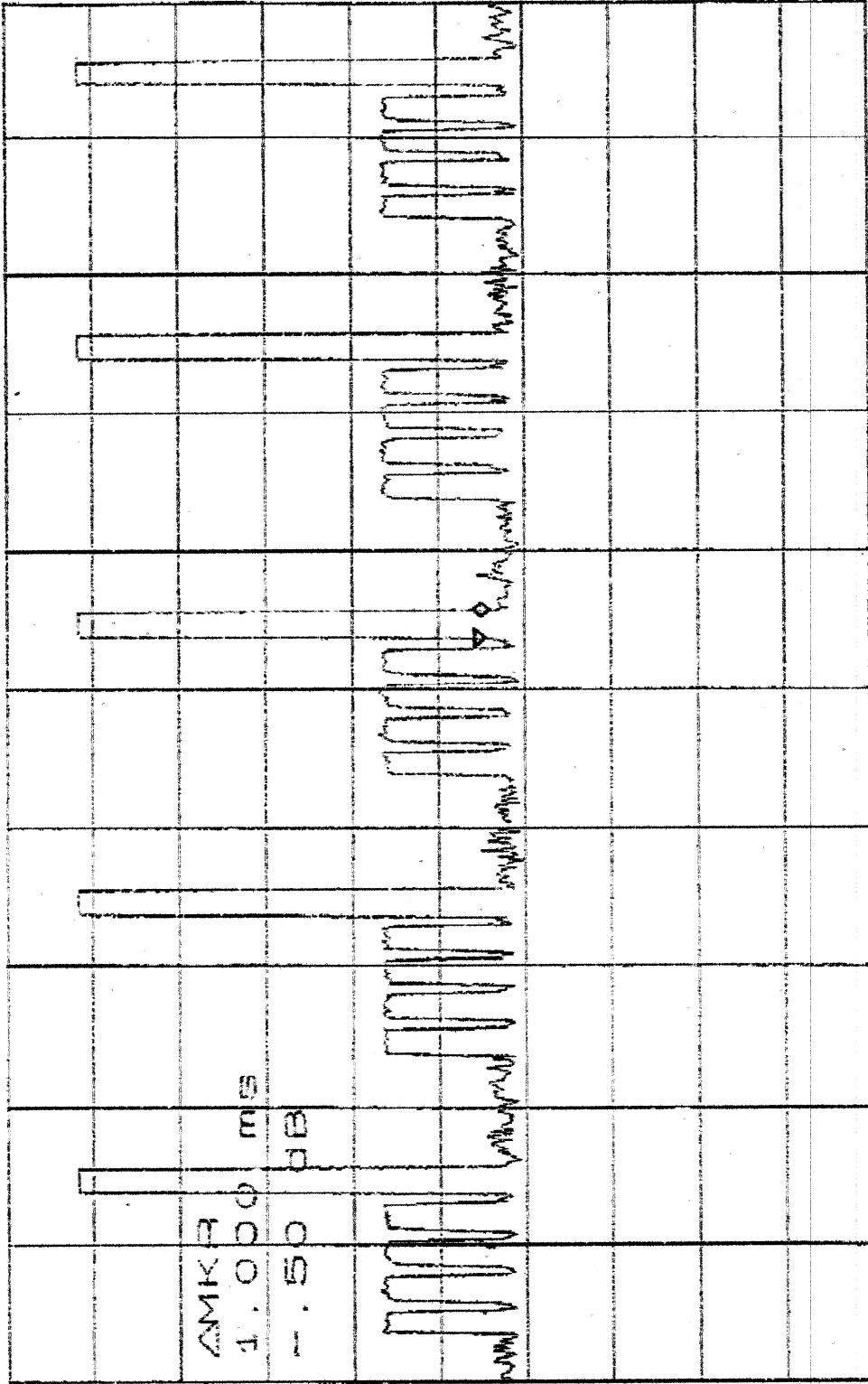
DS

CENTER 2.404733336GHZ SPAN 0HZ
*RBW 1.0MHZ *VBW 1.0MHZ *SMP 100MS

4/6

HANASE

ATTEN 10dB ΔMKR - .50dB
PL 92.0dBμV 1.000ms / 10dB/

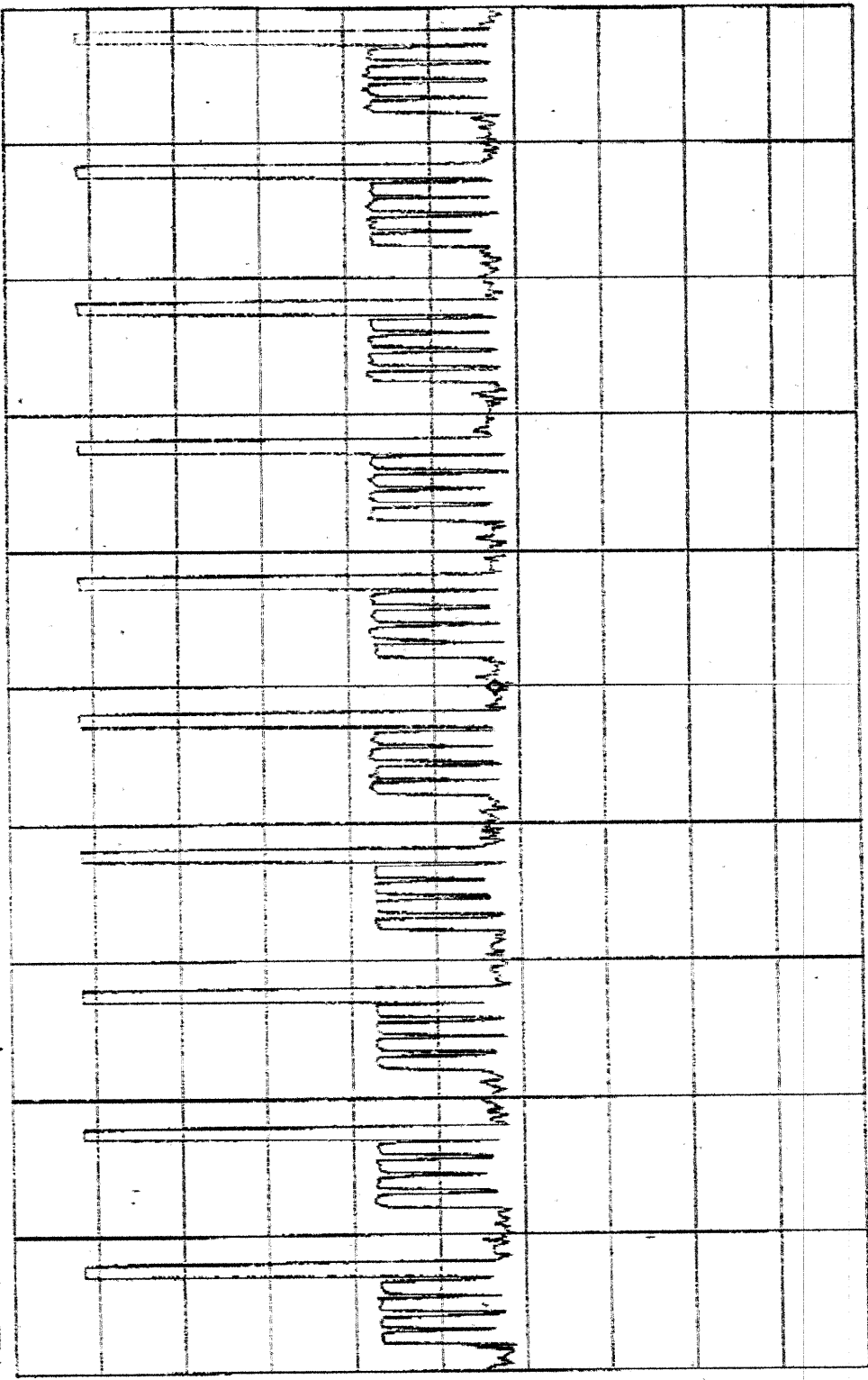


dB

CENTER 2.497558333GHZ SPAN 0HZ
*RBW 1.0MHZ *VBW 1.0MHZ *SSWP 50.0MS

Handset

ATTEN 10dB MKR 33.83dBμV
RL 92.0dBμV 10dB/ 50.00ms



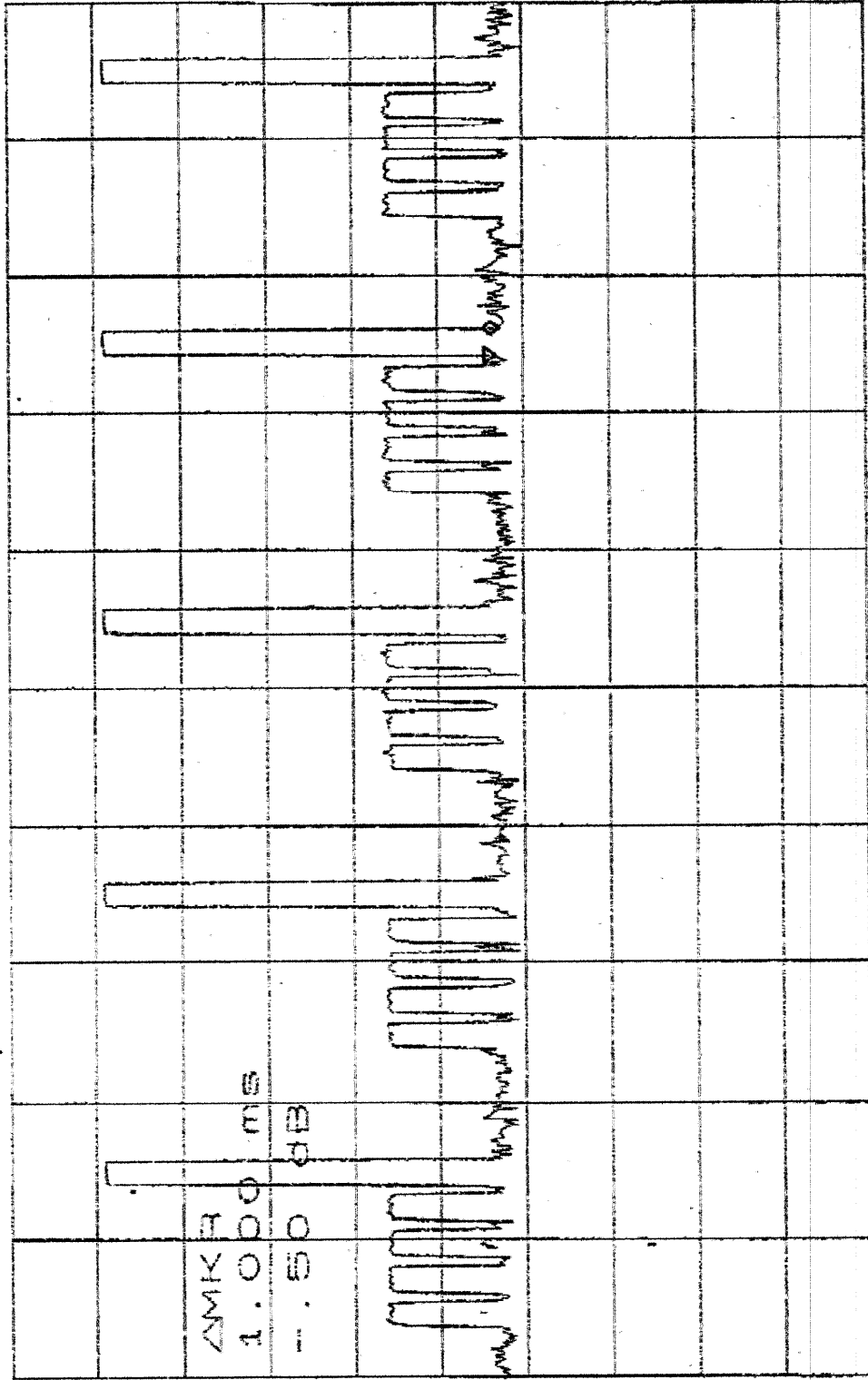
DS

CENTER 2.4375583380-HZ SPAN 0HZ
*RBW 1.0MHZ *VBW 1.0MHZ *SWP 100MS

5/6

Handset

ATTEN 10dB ΔMKR - .50dB
RL 92.0dBμV 1.000ms

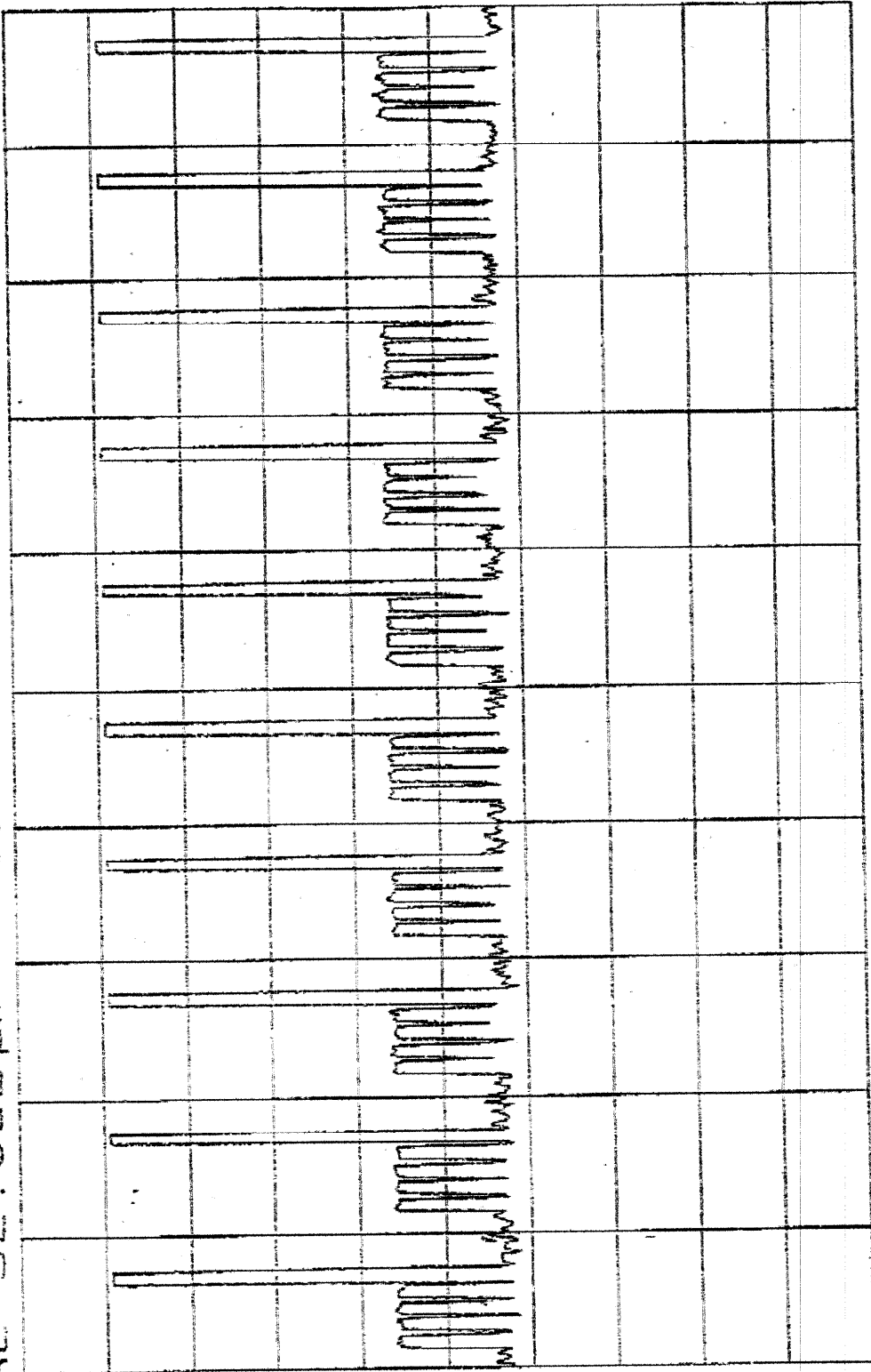


DS

CENTER 2.479783334GHZ SPAN 0.1MHZ
*RBW 1.0MHZ *VBW 1.0MHZ *SWP 50.0MS

Handset

ATTEN 10dB
RL 92.0dBμV 10dB/



DS

CENTER 2.47978334GHZ
 *RBW 1.0MHZ *VBW 1.0MHZ
 SPAN 0HZ *SWP 100MS

6/6