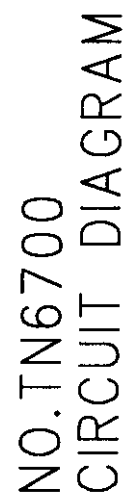


MAIN PCB:TN6700 CIRCUIT EXPLANATION

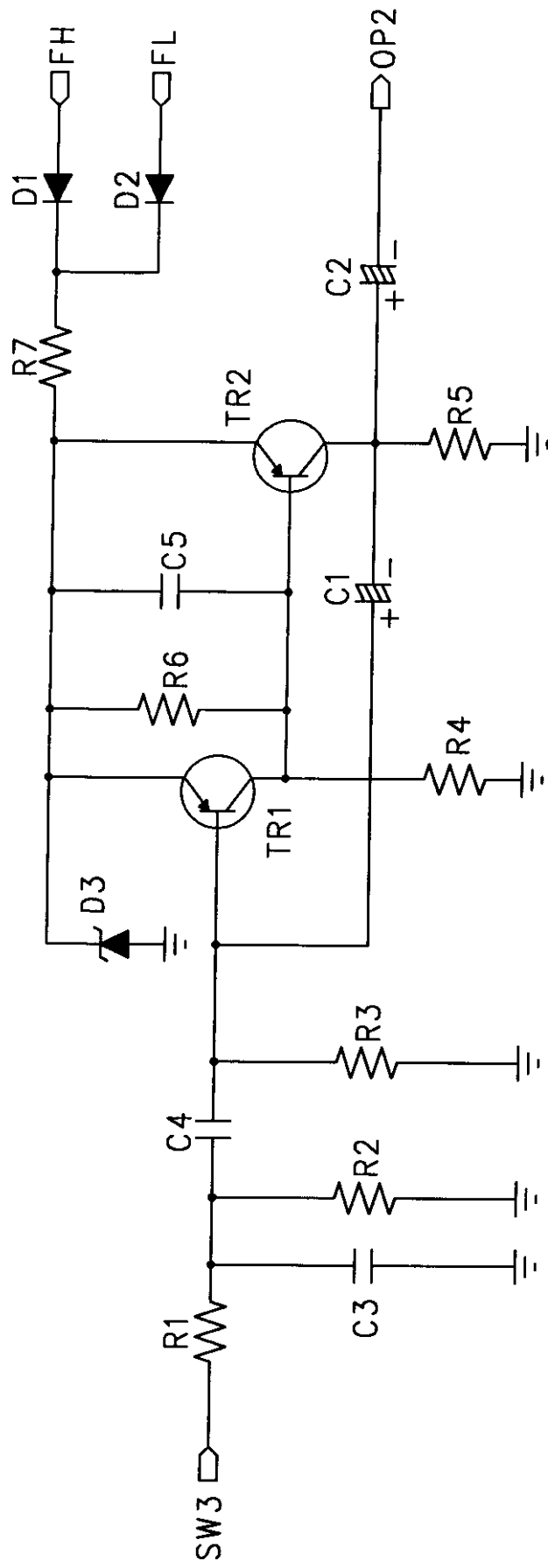
- 1) TR1 forms the power circuit.
- 2) TR2 and TR3 forms the Radio Frequency oscillator.
- 3) The Amplitude Modulation of the Radio Frequency is performed in TR3 by placing the waves on Audio Frequency.
- 4) AM. waves are output into the collector of TR3, passed through the filter, and is transmitted from the Antenna.

SUB PCB:BL0057 CIRCUIT EXPLANATION

- 1) TR1 and TR2 forms the one-shot multivibrator circuit.
Input Switch3 turned Hi, and TR1 is turned off.
Then TR2 is uniform time turned Hi, and input to IC-pin11.



NO. TN6700
CIRCUIT DIAGRAM



NO.BL0057
CIRCUIT DIAGRAM

1998.9.21 MM.