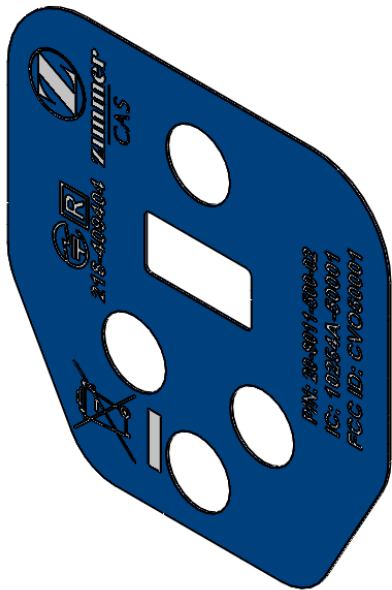
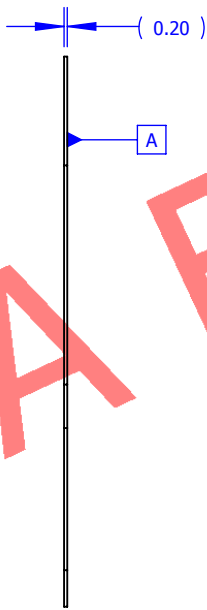
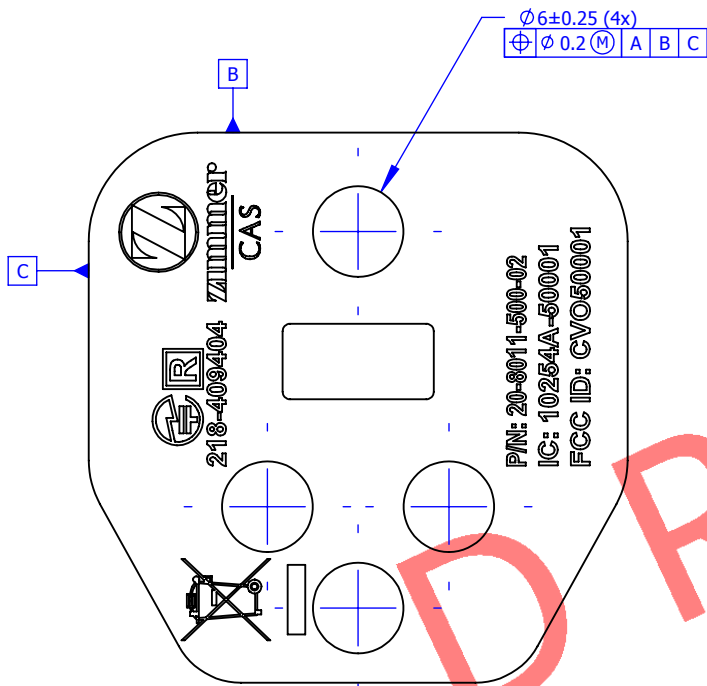


SHEET  
1/1

REV	DESCRIPTION	RELEASE NUMBER
A	PRODUCTION UNIT RELEASE	TCP-20-018



**GENERAL NOTES:**

- GENERAL REQUIREMENTS:  
A. APPLY GENERAL REQUIREMENTS AS PER ZIMMER CAS STD-GEN- 01,UNLESS OTHERWISE SPECIFIED ON THIS DRAWING
- MATERIAL: AUTOTEX V207 , VELVET TEXTURE
- UNSPECIFIED DIMENSIONS:  
A. THIS IS A LIMITED CONTENT DRAWING. REFER TO 3D PART: 20-8011-500-12.01 REV A.X\_T  
B. GENERAL FORM TOLERANCE :  $\pm 0.254$

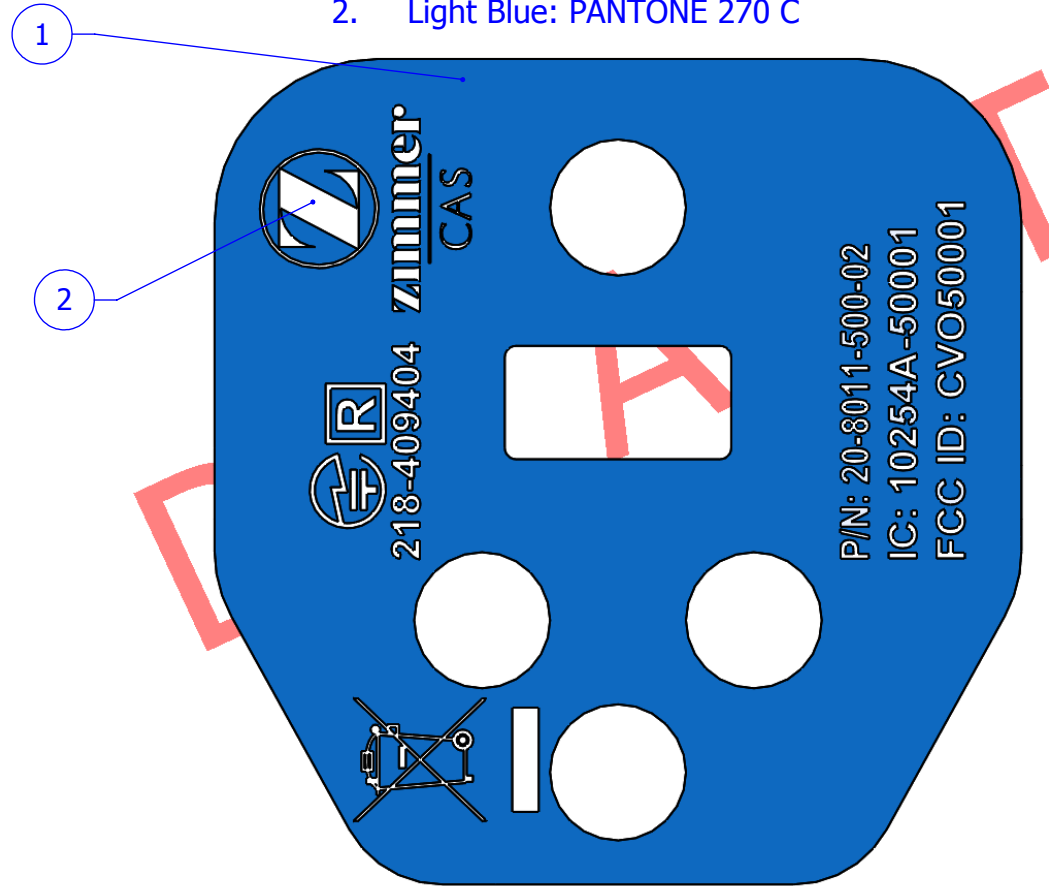


75 Queen, Suite 3300, Montréal, QC, Canada, H3C 2N6

UNLESS OTHERWISE SPECIFIED		MATERIAL	MASS (g)	DESIGNED BY	DATE	PART NAME		
TOLERANCES METRIC		See notes	0.20	Ismail Moussaoui	01-DEC-2020	POD V2 GRAPHIC OVERLAY BACK		
> 0 ... 150 ± 0.5		THIRD ANGLE PROJECTION	ENV. (-)	VERIFIED BY	DATE	STICKER CUT GUIDE		
> 150... 600 ± 0.8		$3^{\text{rd}}$ $\phi$ $\square$	-	APPROVED BY	DATE	PART NUMBER		
> above 600 ± 1.5		DIMENSIONING AND TOLERANCING PER ASME Y14.5M-2009	X -			20-8011-500-12.01		
ANGLE: ± 2°		THE INFORMATION CONTAINED IN THIS DRAWING IS PROPRIETARY TO ZIMMER CAS. ANY REPRODUCTION IN PART OR AS A WHOLE WITHOUT THE WRITTEN PERMISSION OF ZIMMER CAS IS PROHIBITED.	X -			SCALE		
UNLESS OTHERWISE SPECIFIED, ALL DIMENSIONS ARE IN MILLIMETERS						2:1		
						SHEET		
						1/2		

### Color Notes:

1. Dark BLUE: PANTONE REFLEX BLUE C
2. Light Blue: PANTONE 270 C



75 Queen, Suite 3300, Montréal, QC, Canada, H3C 2N6

#### UNLESS OTHERWISE SPECIFIED

**TOLERANCES  
METRIC**  
 > 0 ... 150 ± 0.5  
 > 150... 600 ± 0.3  
 > above 600 ± 1.5  
**ANGLE: ± 2°**  
 UNLESS OTHERWISE  
 SPECIFIED, ALL  
 DIMENSIONS ARE IN  
 MILLIMETERS

REMOVE ALL BURRS  
 AND SHARP EDGES  
**0.5 MAX**

DIMENSIONING AND  
 TOLERANCING PER  
 ASME Y14.5M-2009

#### MATERIAL

See notes

THIRD ANGLE PROJECTION  
**3<sup>RD</sup>**

THE INFORMATION CONTAINED IN THIS  
 DRAWING IS PROPRIETARY TO ZIMMER CAS  
 ANY REPRODUCTION IN PART OR AS A  
 WHOLE WITHOUT THE WRITTEN PERMISSION  
 OF ZIMMER CAS IS PROHIBITED.

MASS (g)  
 0.20

ENV. (-)

-

X -

X -

DESIGNED BY

Ismail Moussaoui

VERIFIED BY

APPROVED BY

DATE  
 20-APR-2020

DATE

DATE

PART NAME

POD V2 GRAPHIC OVERLAY BACK  
 STICKER CUT GUIDE

PART NUMBER

20-8011-500-12.01

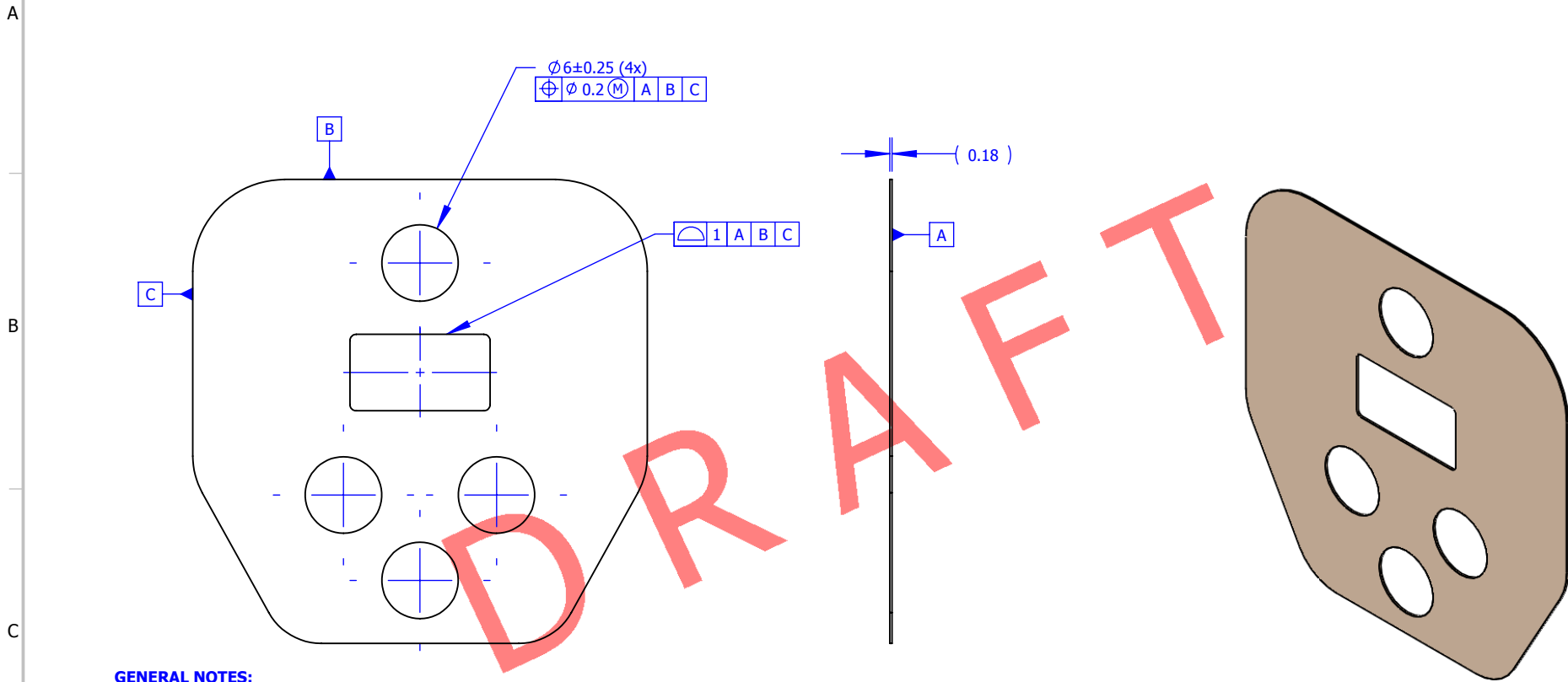
SCALE

2:1

SHEET


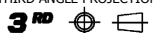
2/2

1	2	3	4
		REV	DESCRIPTION
		A	PRODUCTION UNIT RELEASE
			RELEASE NUMBER
			TCP-20-018

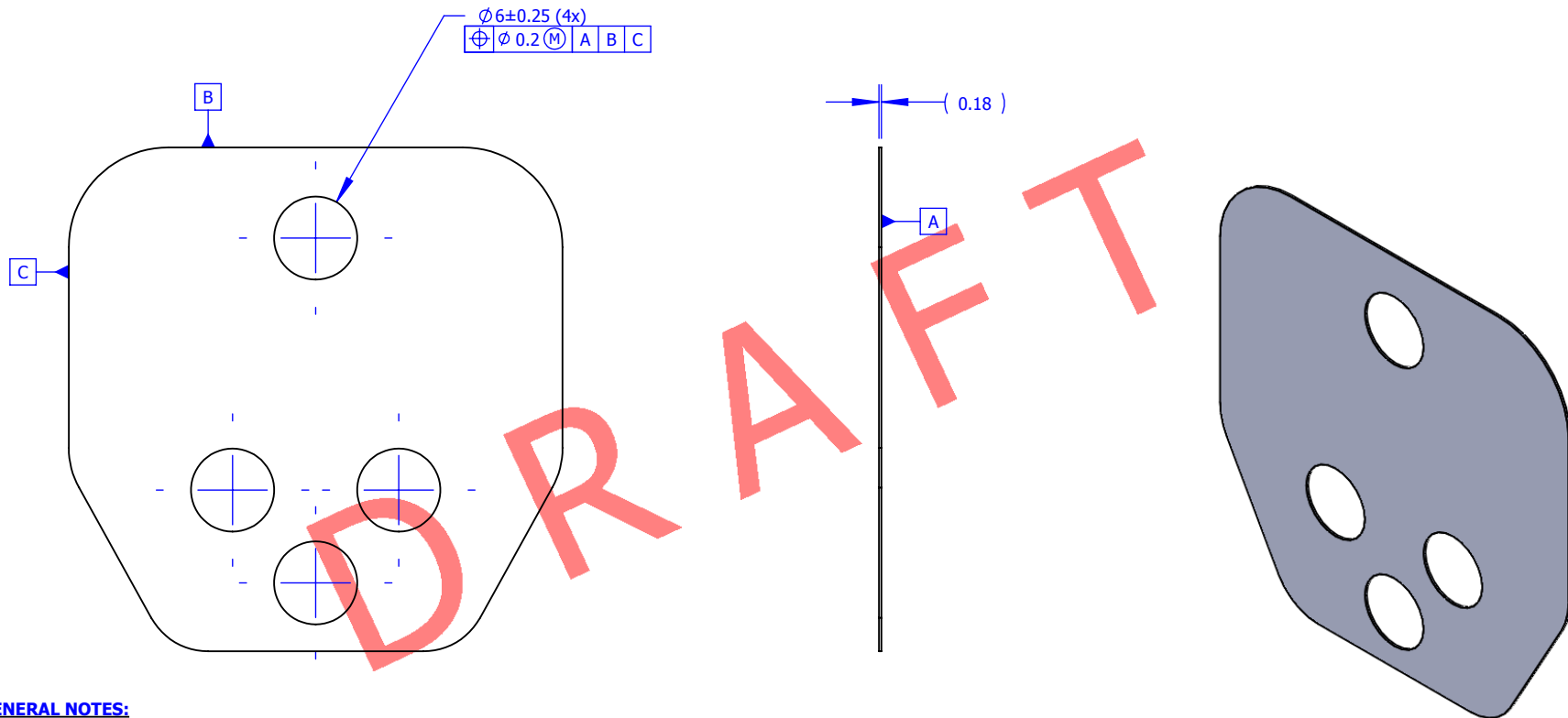


GENERAL NOTES:

- GENERAL REQUIREMENTS:  
  
A. APPLY GENERAL REQUIREMENTS AS PER ZIMMER CAS STD-GEN- 01,UNLESS OTHERWISE SPECIFIED ON THIS DRAWING
- MATERIAL: BLACK 3M 7957M
- UNSPECIFIED DIMENSIONS:  
  
A. THIS IS A LIMITED CONTENT DRAWING. REFER TO 3D PART: 20-8011-500-12.02 REV A.X\_T  
B. GENERAL FORM TOLERANCE :  $\sqrt[0.254]$

 75 Queen, Suite 3300, Montréal, QC, Canada, H3C 2N6	UNLESS OTHERWISE SPECIFIED		MATERIAL	MASS (g)	DESIGNED BY	DATE	PART NAME		
	TOLERANCES METRIC > 0 ... 150 ± 0.5 > 150... 600 ± 0.8 > above 600 ± 1.5 ANGLE: ± 2° UNLESS OTHERWISE SPECIFIED, ALL DIMENSIONS ARE IN MILLIMETERS	REMOVE ALL BURRS AND SHARP EDGES <b>0.5 MAX</b>	See notes THIRD ANGLE PROJECTION 	0.18 ENV. (-) - X - X -	Ismail Moussaoui VERIFIED BY  APPROVED BY	01-DEC-2020 DATE  DATE	POD V2 BOTTOM LABEL ADHESIVE		
	DIMENSIONING AND TOLERANCING PER ASME Y14.5M-2009		THE INFORMATION CONTAINED IN THIS DRAWING IS PROPRIETARY TO ZIMMER CAS ANY REPRODUCTION IN PART OR AS A WHOLE WITHOUT THE WRITTEN PERMISSION OF ZIMMER CAS IS PROHIBITED.				PART NUMBER	SCALE	SHEET
							20-8011-500-12.02	2:1	1/1

REV	DESCRIPTION	RELEASE NUMBER
A	PRODUCTION UNIT RELEASE	TCP-20-018



# **GENERAL NOTES:**

## 1. GENERAL REQUIREMENTS:

A. APPLY GENERAL REQUIREMENTS AS PER ZIMMER CAS STD-GEN- 01,UNLESS OTHERWISE SPECIFIED ON THIS DRAWING

## 2. MATERIAL: TYVEK 1073B

## 3. UNSPECIFIED DIMENSIONS:

A. THIS IS A LIMITED CONTENT DRAWING. REFER TO 3D PART: 20-8011-500-12.03 REV A.X\_T

B. GENERAL FORM TOLERANCE :  $\boxed{0.254}$



75 Queen, Suite 3300, Montréal, QC, Canada, H3C 2N6

## UNLESS OTHERWISE SPECIFIED

TOLERANCES  
METRIC  
> 0 ... 150 ± 0.5  
> 150... 600 ± 0.8  
> above 600 ± 1.5  
ANGLE: ± 2°  
UNLESS OTHERWISE  
SPECIFIED, ALL  
DIMENSIONS ARE IN  
MILLIMETERS

REMOVE ALL BURRS  
AND SHARP EDGES  
**0.5 MAX**

DIMENSIONING AND  
TOLERANCING PER  
ASME Y14.5M-2009

## MATERIAL

See notes

THIRD ANGLE PROJECTION  
**3<sup>RD</sup>**

THE INFORMATION CONTAINED IN THIS  
DRAWING IS PROPRIETARY TO ZIMMER CAS  
ANY REPRODUCTION IN PART OR AS A  
WHOLE WITHOUT THE WRITTEN PERMISSION  
OF ZIMMER CAS IS PROHIBITED.

MASS (g)

0.19

ENV. (-)

-

X -

X -

DESIGNED BY

Ismail Moussaoui

VERIFIED BY

APPROVED BY

DATE

01-DEC-2020

DATE

DATE

PART NAME

TYVEK POD V2 BACK STICKER

PART NUMBER

20-8011-500-12.03

SCALE

2:1

SHEET

1/1