

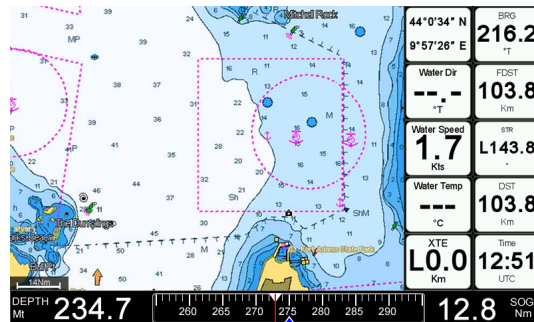
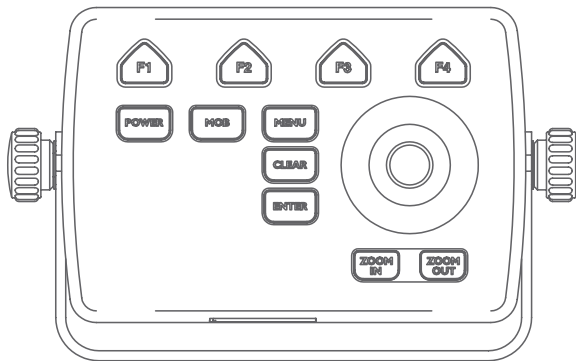
## Contents

1. What's new about Controller30?	1
2. HMI and Menu tree introduction	2
3. Main menu tree and Settings	3
4. Full and combo pages	4
4.1 How to change the page	4
4.1 How to move the focus in combo pages	4
5. Settings dialogs	5
6. Function keys	6
7. Ports	6
7. Remote control	7
7.1 How to insert the battery	7
7.2 How to enter the PIN for pairing	8

## 1. What's new about Controller30?

New features	
<b>NMEA 2000/CANBUS</b>	NMEA 2000 support
<b>Remote control</b>	Full control on the software, fully functional (Controller is optional)
<b>microSD</b>	1 slot
<b>HDMI</b>	Video output
Unit Hardware	
<b>Power supply</b>	10-35 Vdc
<b>Power switch</b>	On Rubber keypad
<b>Storage temperature</b>	-20 +80 °C
<b>Operating temperature</b>	-20 +60°C
<b>Buzzer</b>	Internal
Main board	
<b>CPU</b>	Cortex A9 1Ghz
<b>iNAND</b>	4 GB
<b>RAM</b>	512 MB
<b>Remote control</b>	Radio 2.4Ghz
Software design	
<b>UI concept</b>	Redesigned to improve the usability with keyboard and remote control
<b>Graphics</b>	High contrast color palette
<b>Menus</b>	Single level, directly from the map
<b>Data boxes on map</b>	1 or 2 vertical columns on the right, with 5 databoxes each, with editable content
<b>Cursor or fix menu</b>	Pop up menu
<b>Cursor info</b>	Dedicated data box on the map

## 2. HMI and Menu tree introduction



Map Page

ENTER

MENU



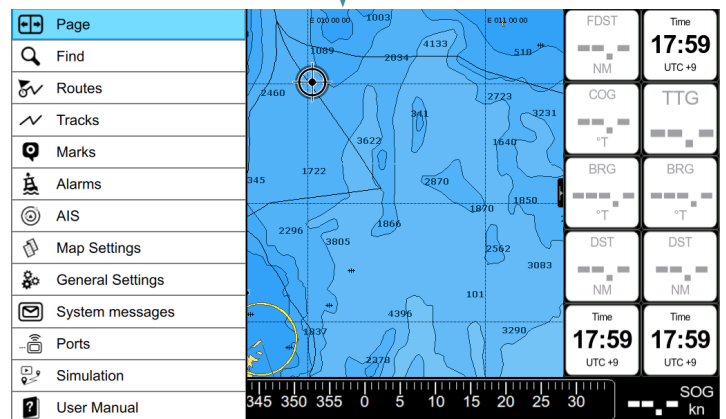
Fix or cursor menu

### On cursor:

- Go to
  - Clear route (if route active)
  - Mark
  - New route
  - Info
  - A-B
- (other actions as delete and edit enabled in case of marks and wps)

### On fix:

- Clear route (if route active)
- Mark
- Course predictor
- Track on/off
- Info
- A-B

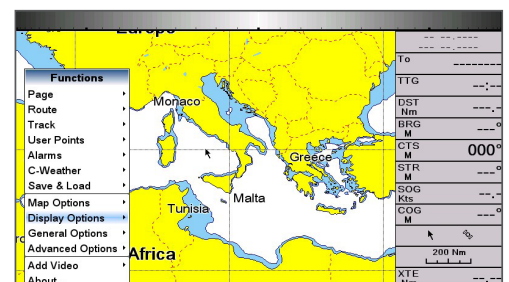


Main menu (Map)

- Page
- Find
- Routes
- Tracks
- Marks
- Alarms
- AIS
- Map settings
- General settings
- System messages
- Ports and connections
- Simulation
- User Manual

### Old controller:

with the re-design, the new Controller 30 introduce the single level menu, inspired by the old controller approach.



## 3. Main menu tree and Settings

Main menu content is contextual to the page. For instance, the same menu on Fish Finder page contains also the issues related to the FF settings and functions.

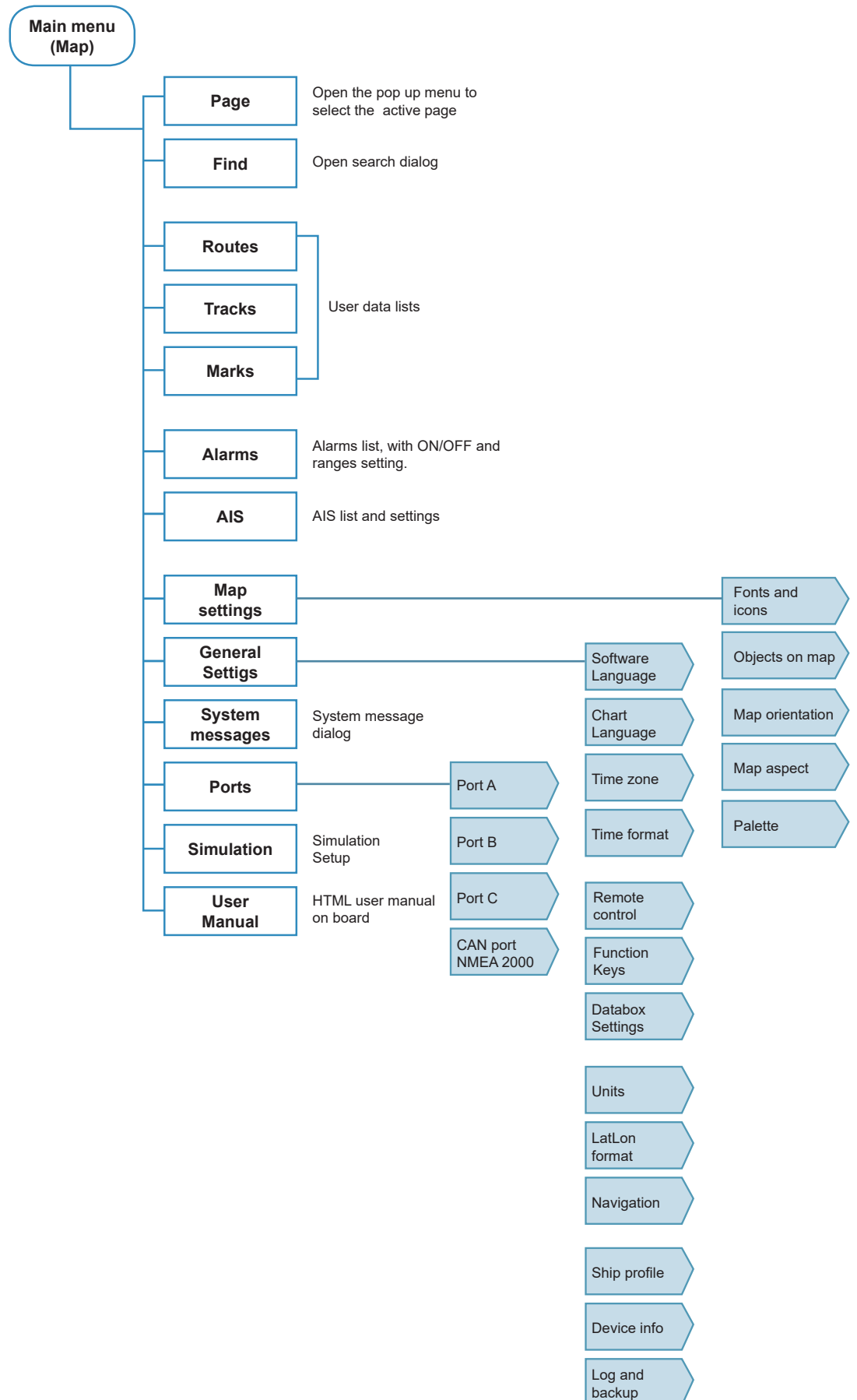
The diagram on the right refers to the main menu open from map page.

	Page
	Find
	Routes
	Tracks
	Marks
	Alarms
	AIS
	Map Settings
	General Settings
	System messages
	Ports
	Simulation
	User Manual

Map Main Menu

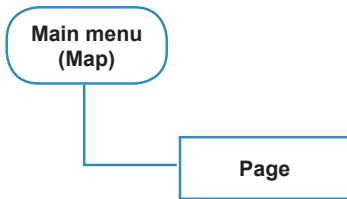
	Page
	Frequency kHz
	Range Mode
	Gain Mode
	Transducer setup
	Sensitivity
	Display Settings
	Alarm Settings
	General Settings
	System messages
	Ports
	Simulation
	User Manual

FishFinder Main Menu

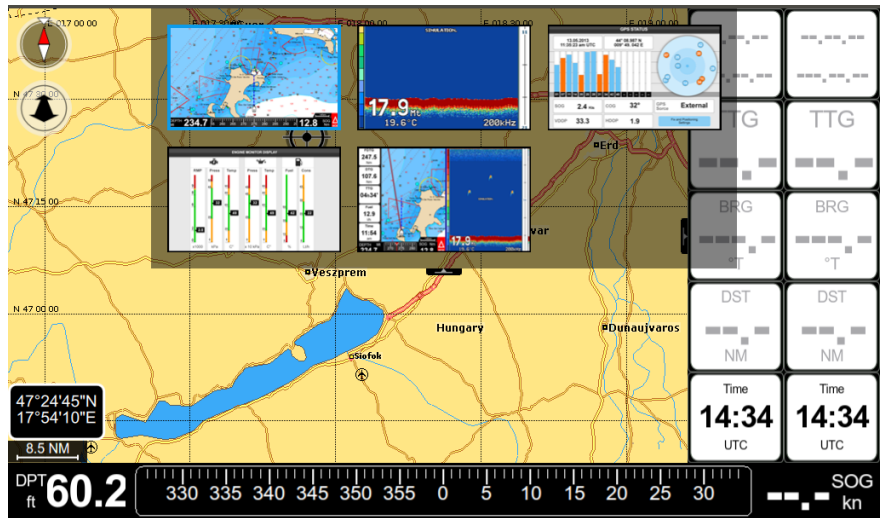


## 4. Full and combo pages

### 4.1 How to change the page



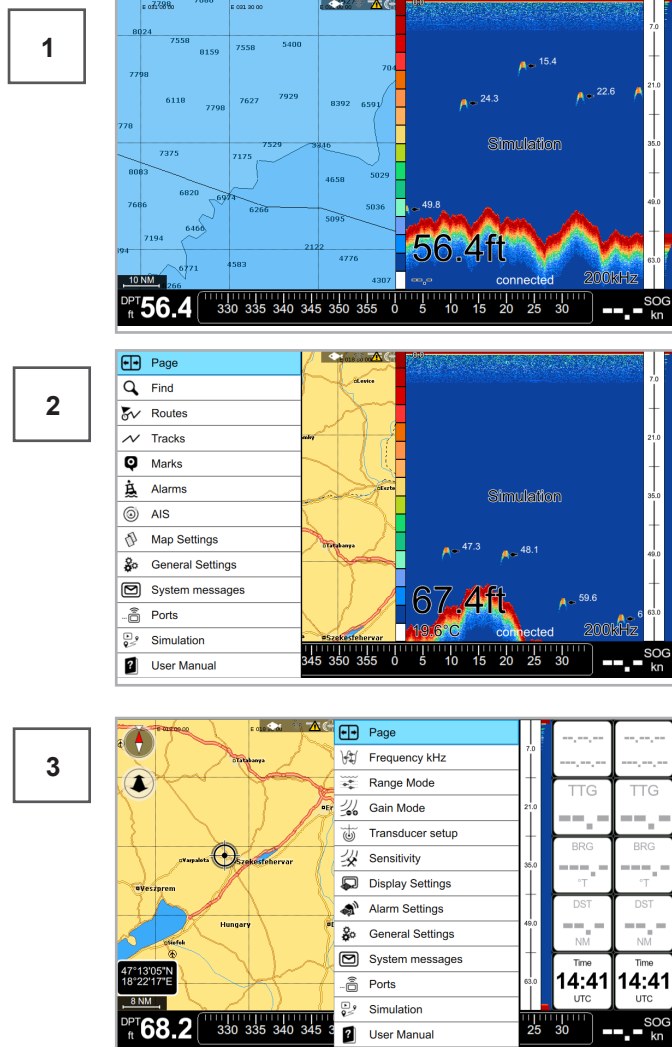
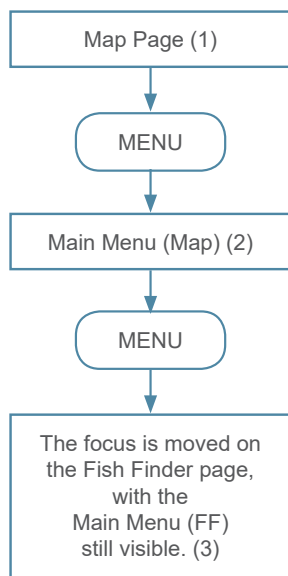
The Page button on main menu opens the Page widget, a pop menu on map with the list of the available pages. Use the joystick to select the desired page and press ENTER.



### 4.1 How to move the focus in combo pages

By default, in the combo page Map + FishFinder the focus is on the map.

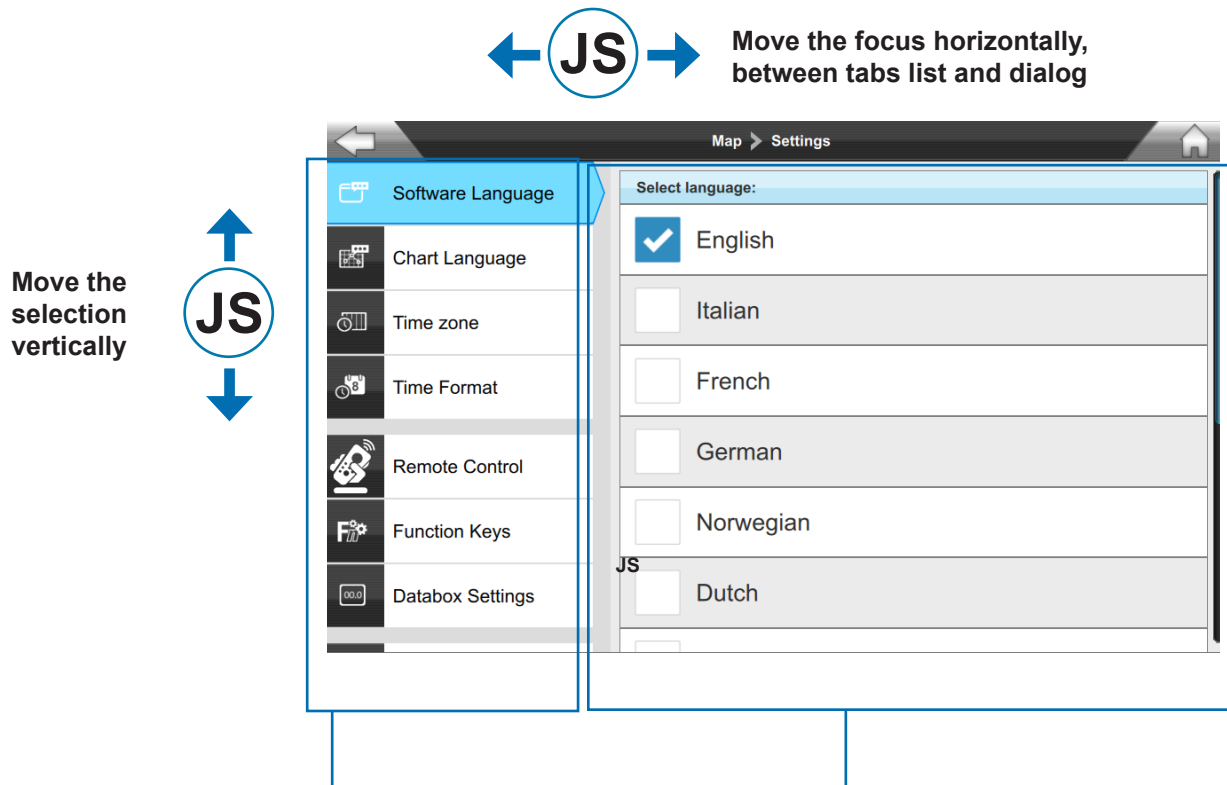
To move the focus, press MENU and then use the Joystick LEFT-RIGHT:



## 5. Settings dialogs

Settings page are divided in 2 parts:

1. **Tabs:** The list of issues.
2. **Dialog:** It is the content of each tab and contains the settings available for the selected issue.



### TABS:

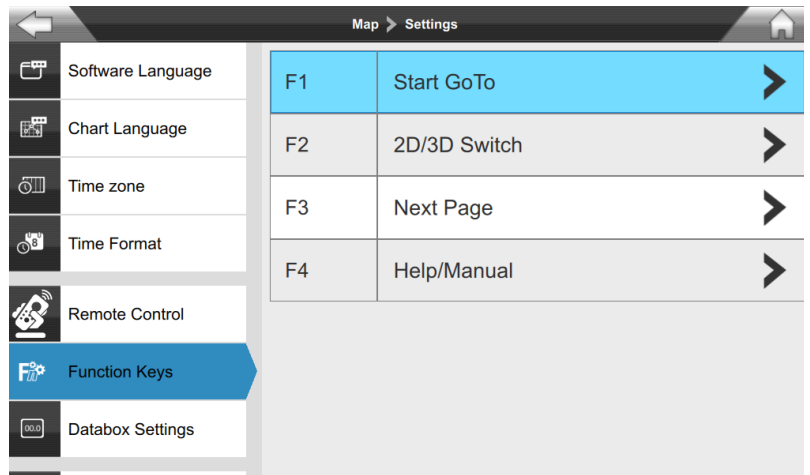
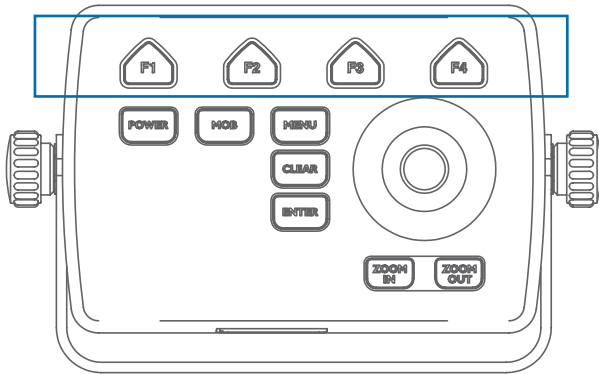
1. Use the joystick UP-DOWN to scroll the tabs.
2. To select a tab and move the focus to the dialog page, press ENTER or use the joystick RIGHT.

### DIALOG:

3. Use the joystick UP-DOWN to scroll the rows.
4. Press ENTER to select the option and act on the control.
5. Use the joystick LEFT to move the focus back to the tabs.
6. Press CLEAR to close and comeback to map.

## 6. Function keys

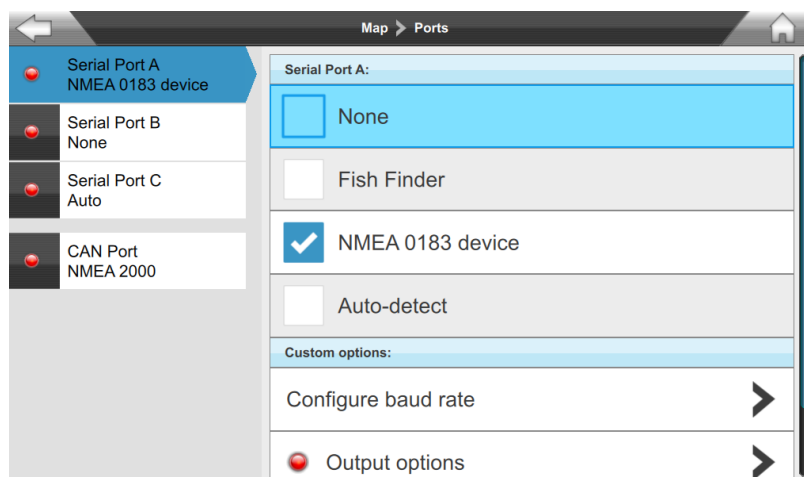
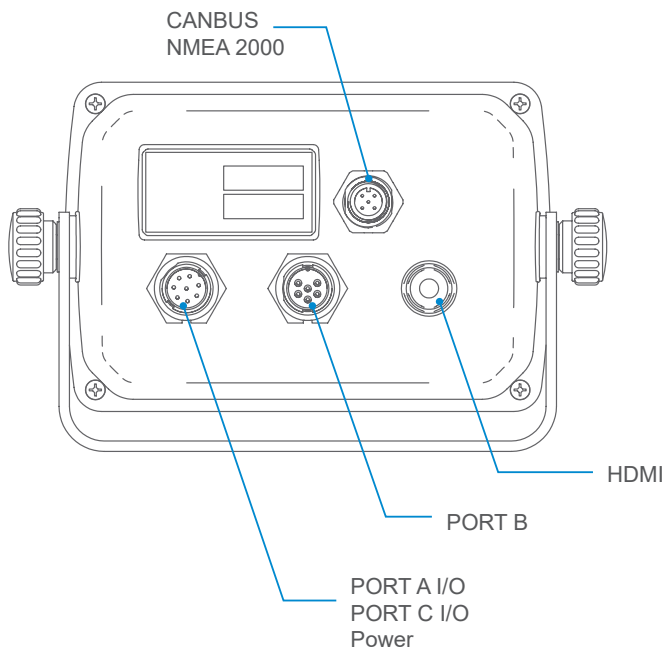
Use Function Keys dialog to customize the function related to F keys on keyboard. Press ENTER on the FX row to open the popup list of options.



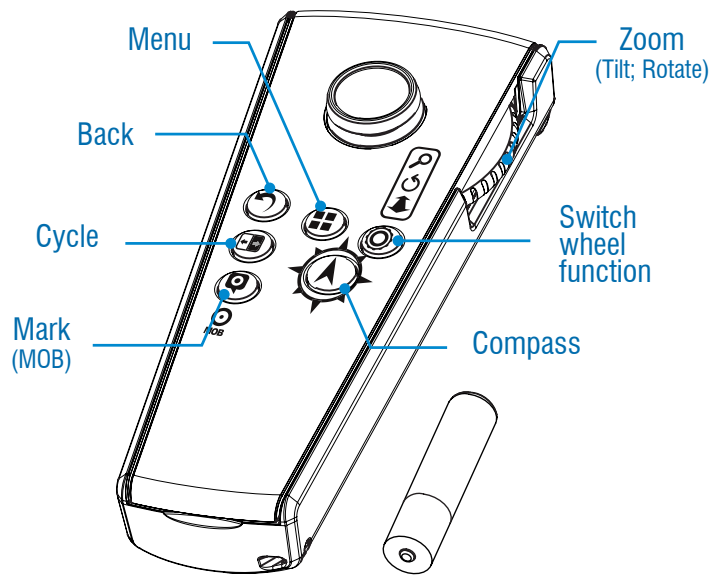
## 7. Ports

Use Ports dialog to customize the connections. On tab related to each port, an icon shows the status:

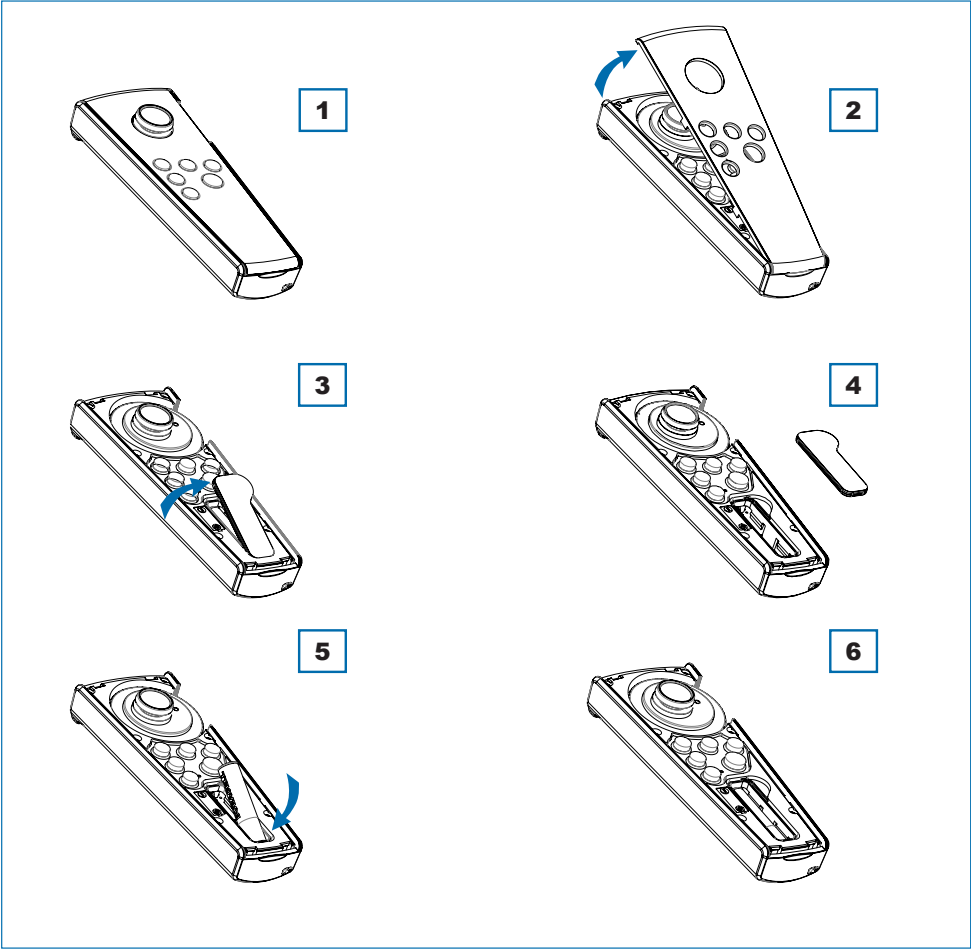
- Blue: receiving data
- Red: not receiving



7. Remote control



7.1 How to insert the battery



## 7.2 How to enter the PIN for pairing

