

APPENDIX 7

Equipment Identification Label Photographs of Base Station Transmitter Drawings of Base Station Transmitter Boards*

***Note:** *Due to the small size of the boards and their components, and the consequent difficulty of distinguishing components on a photograph, Manufacturing Drawings showing component locations are provided in lieu of internal photographs.*

blank

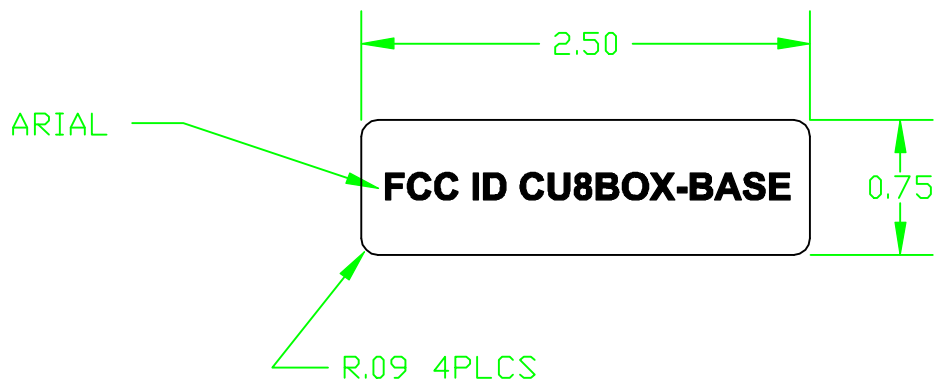
Equipment Identification Label

REVISIONS

REV.	DESCRIPTION	DATE	APPROVED
------	-------------	------	----------

NOTES:

1. ADHESIVE: 3M #9568 PRESSURE SENSITIVE APPLIED TO BACK OF LABEL.
2. TEXT HEIGHT: .15 , FONT: ARIAL BOLD



APPLICATIONS

UNLESS OTHERWISE SPECIFIED
DIMENSIONS ARE IN INCHES
TOLERANCES ARE:
FRACTIONS DECIMALS ANGLES
 $\pm 1/16$ $.XX \pm .01$ $\pm 1^\circ$
 $.XXX \pm .005$

MATERIAL:
.008" THK ANODIZED
ALUM. WITH MATTE
FINISH

SURFACE FINISH:

FINISH:
PHOTO ANDOIZED
BLACK LETTERS

DRAWN

J.EVERETTE

3-1-00

APPROVALS

DATE

DRAFTING

DESIGNER

MANUFACTURING



FAIRFIELD
INDUSTRIES

DWG TITLE:

LABEL, FCC ID, BASE STATION

SIZE DWG NO

100.6013

REV

-

SCALE 1=1

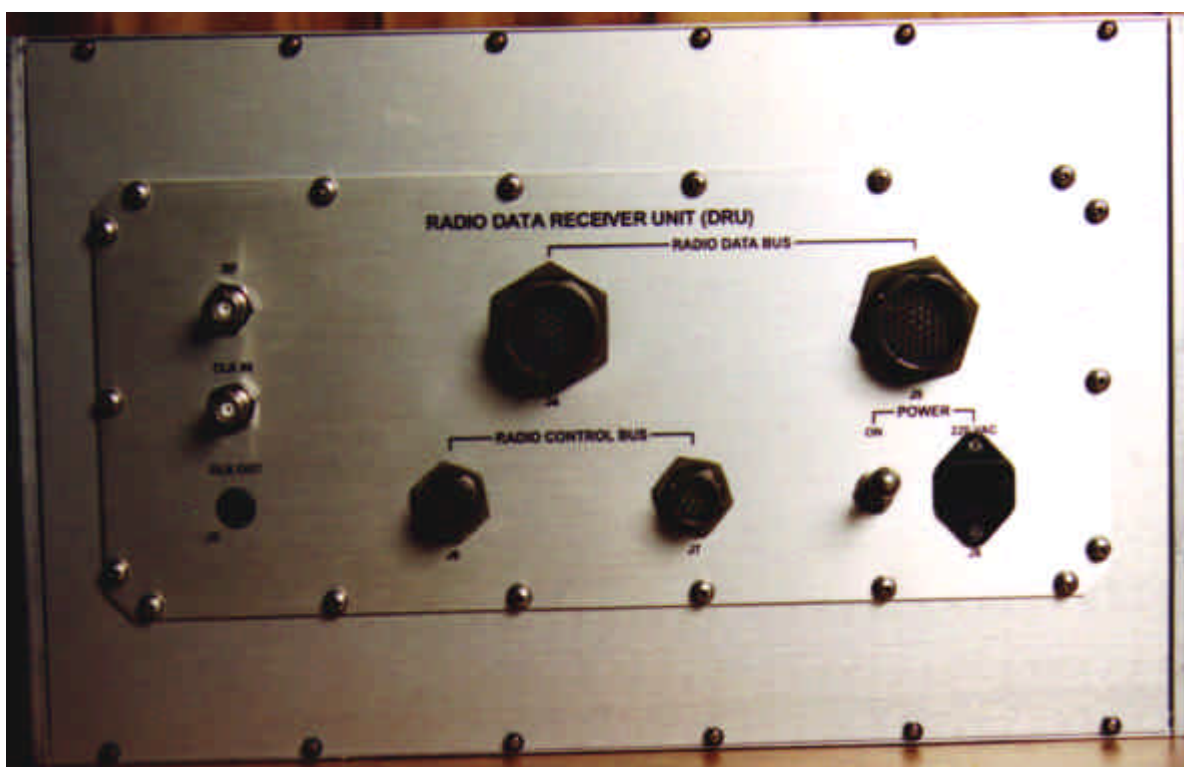
DO NOT SCALE DRAWING

SHEET 1 OF 1

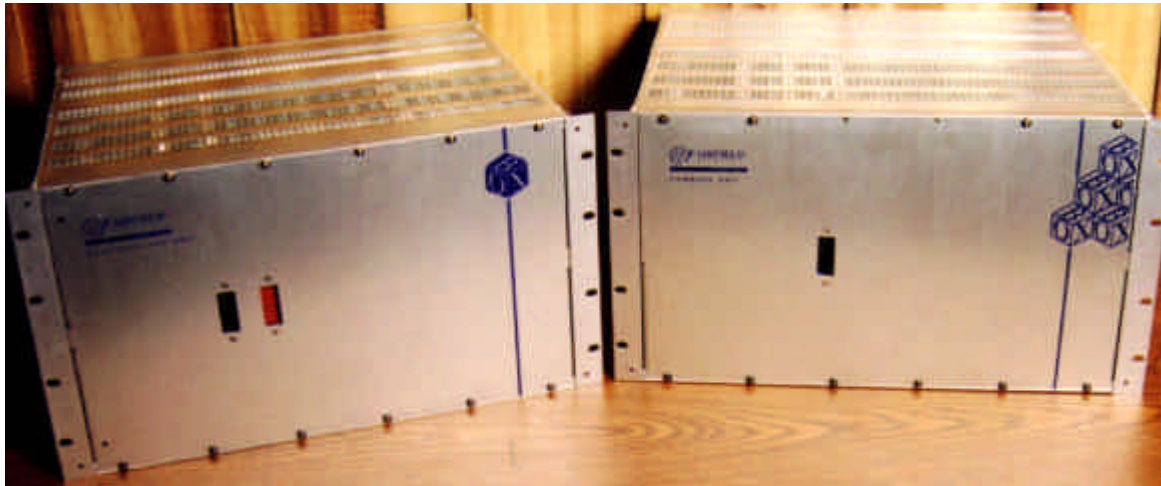
Photographs of Base Station Transmitter



**FCC ID CU8 BOX – Base Station
Base Station Transmitter – Rear View (Command Unit)**



**FCC ID CU8 BOX – Base Station
Base Station Transmitter – Rear View (Receiver Unit)**



**FCC ID CU8 BOX – Base Station
Base Station Transmitter**



**FCC ID CU8 BOX – Base Station
Base Station Transmitter – Front Panels Removed**

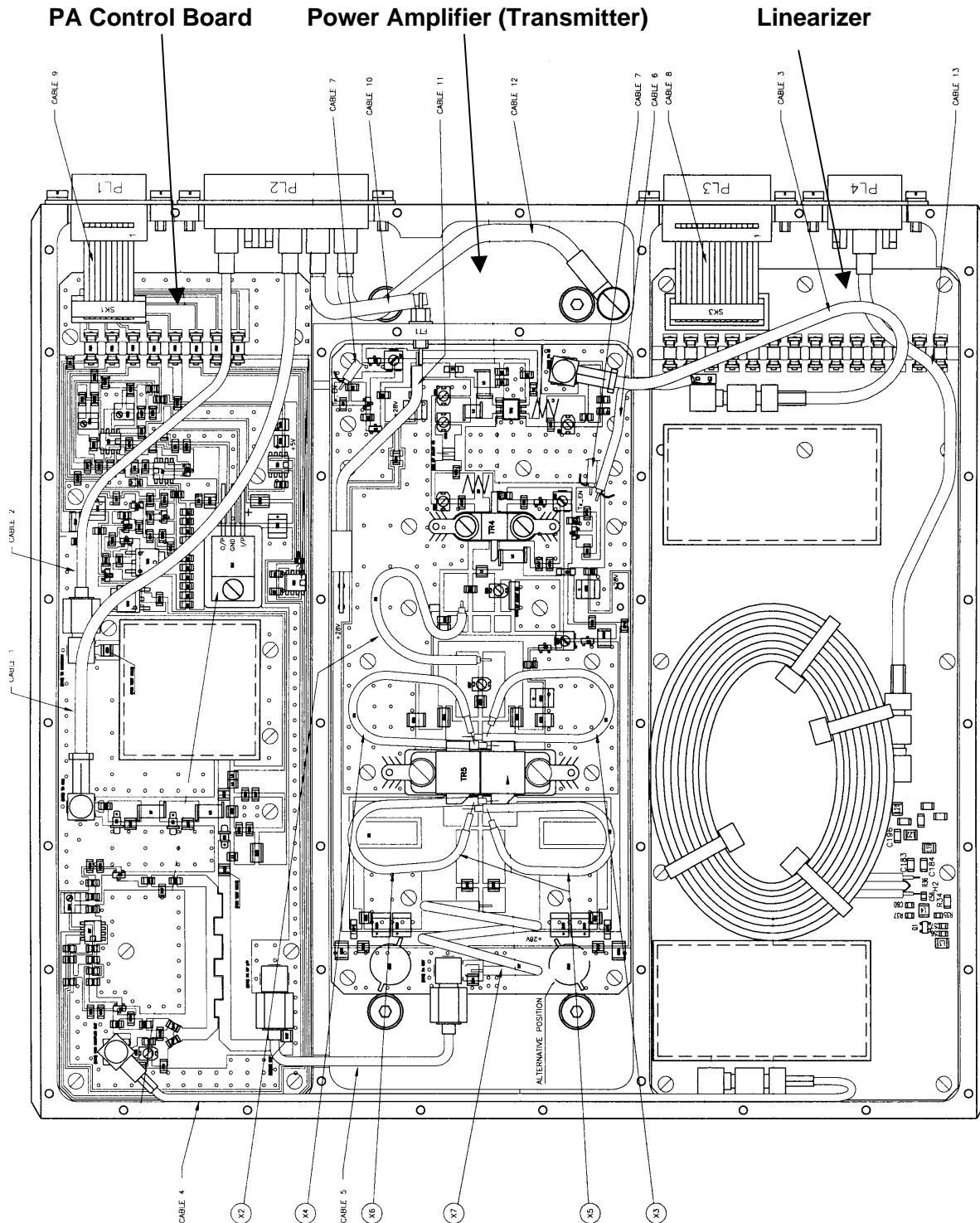
APPENDIX 7

Drawings of Base Station Transmitter Boards*

***Note:** *Due to the small size of the boards and their components, and the consequent difficulty of distinguishing components on a photograph, Manufacturing Drawings showing component locations are provided in lieu of internal photographs.*

blank

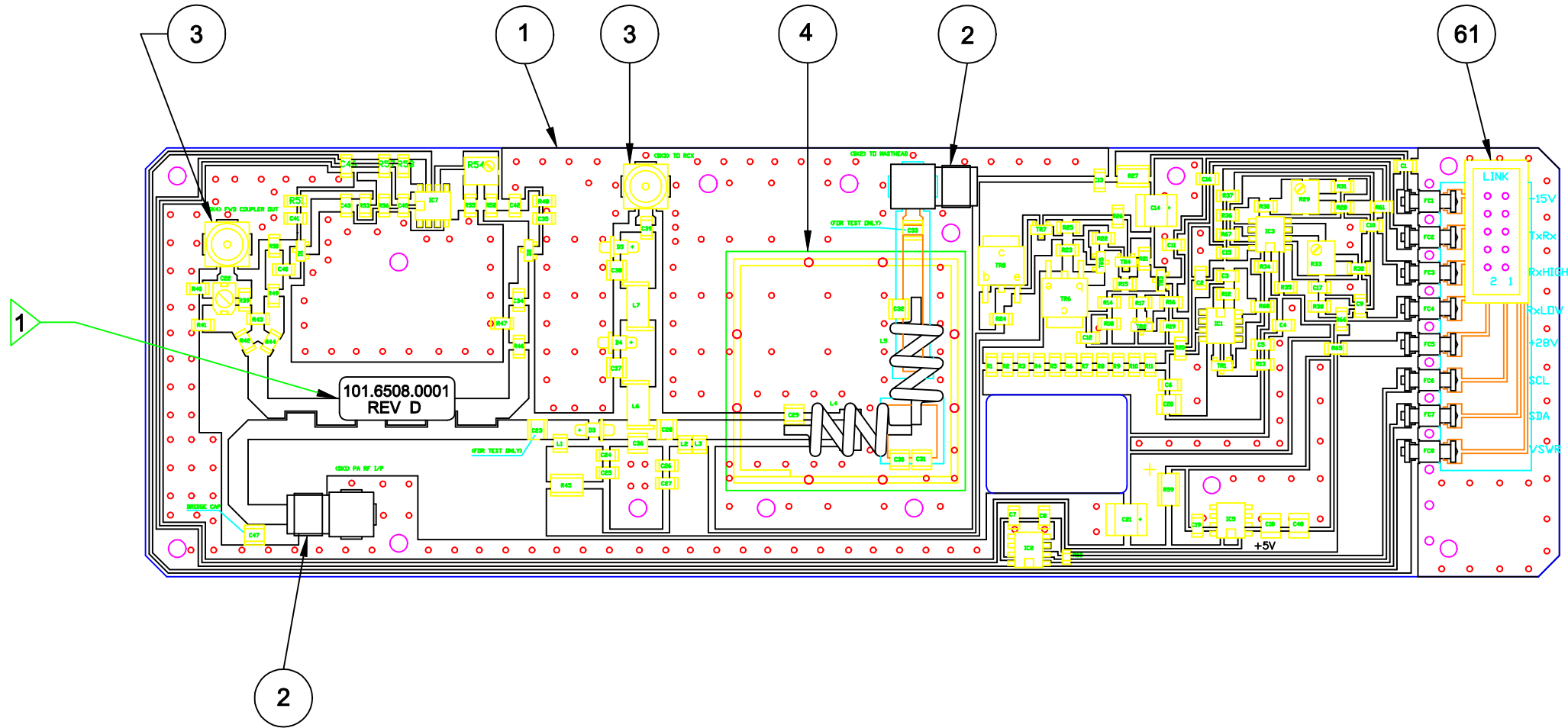
Base Station Transmitter – Assembly Drawing




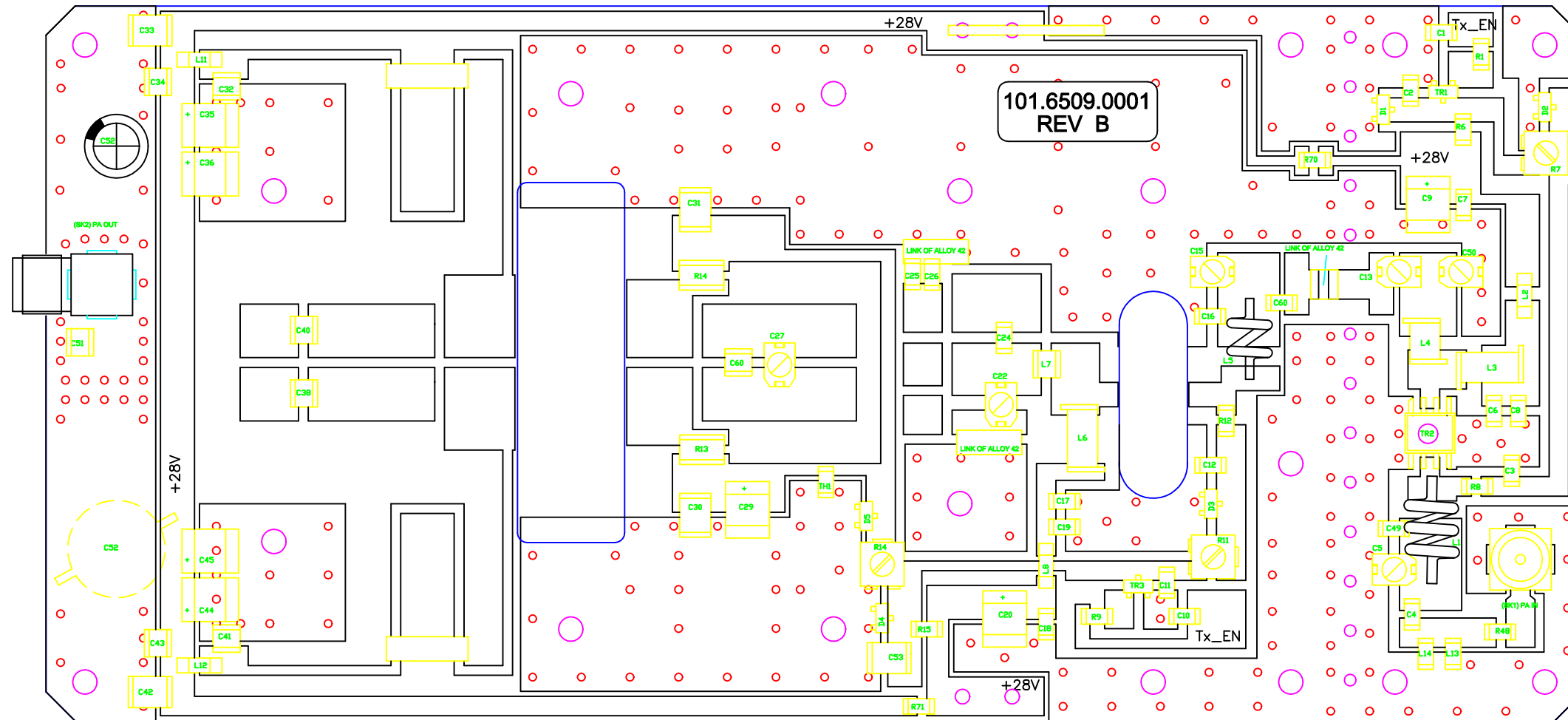
NOTES:

- 1 PLACE A PART NUMBER REVISION LABEL IN APPROXIMATE AREA SHOWN.
LABEL SIZE: 1.00 X .375
MATERIAL: WHITE POLYESTER
FONT: ARIAL ; HEIGHT: 7 PT.

REVISIONS			
REV.	DESCRIPTION		DATE
A	WISL ECN 110	PULLUPS ON OPEN COLLECTORS AND DALLAS IC.	
B	WISL ECN 111	UPGRADE TX / RX DIODES	
C	WISL ECN 112	ADD PULL-UP RESISTORS ON TX RX - SAFETY FEATURE IF BASEBAND UNPLUGGED	
D	WISL ECN 134	INCREASE ANTENUATOR FEEDBACK PAD	



PROPRIETARY NOTICE		UNLESS OTHERWISE SPECIFIED DIMENSIONS ARE IN INCHES TOLERANCES ARE: FRACTIONS DECIMALS ANGLES ± .XX± ± .XXX±		DRAWN J.EVERETTE 5-19-99		 FAIRFIELD INDUSTRIES	
Copyright 1998 Fairfield Industries Incorporated; All Rights Reserved This document and the information contained herein is the property of Fairfield Industries Incorporated. Any use, disclosure, copying, display, reproduction or dissemination of any part of this document and/or the information contained herein without the prior written authorization of Fairfield Industries Incorporated is prohibited. Infringers may be subject to civil and/or criminal penalties (17 U.S.C. paragraphs 504-506).		REMOVE ALL BURRS AND SHARP EDGES CONCENTRICITY MACHINED DIAMETERS .004 TIR		APPROVALS		DATE	
		MATERIAL		DRAFTING		PWA, 508, COMMAND, PA CONTROL	
		SURFACE FINISH					



Copyright 1998 Fairfield Industries Incorporated; All Rights Reserved
This document and the information contained herein is the property of Fairfield Industries Incorporated. Any use, disclosure, copying, display, reproduction or dissemination of any part of this document and/or the information contained herein without the prior written authorization of Fairfield Industries Incorporated is prohibited. Infringers may be subject to civil and/or criminal penalties (17 U.S.C. paragraphs 504-506).

PWA, 509, COMMAND PA

SIZE B	DWG NO 101.6509	REV B
SCALE N.T.S.	DO NOT SCALE DRAWING	SHEET 2 OF 2

